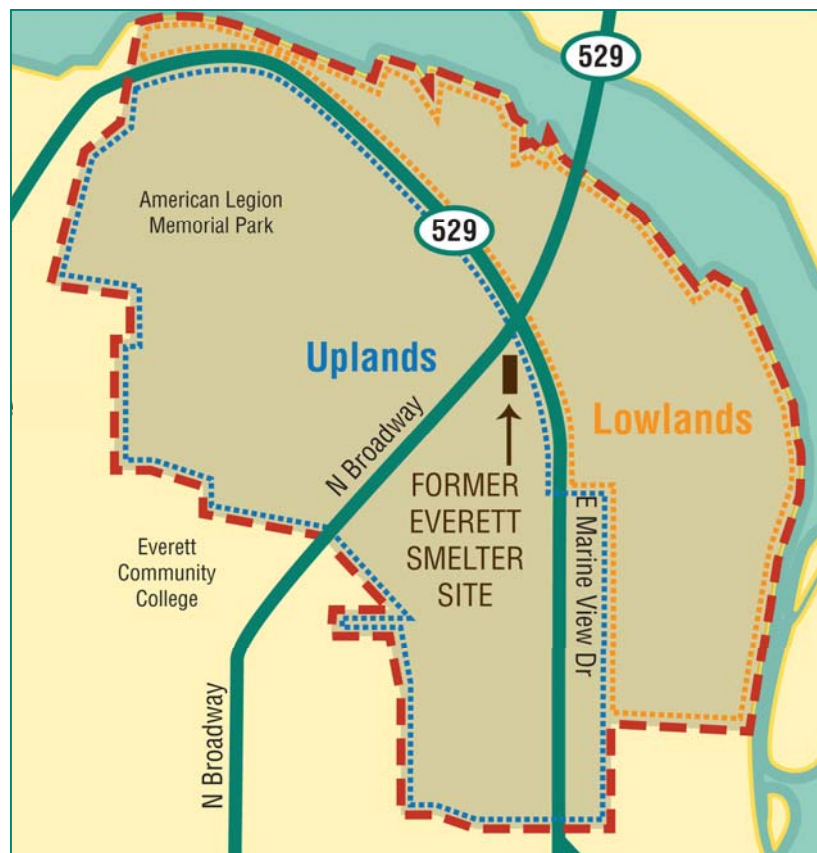


## Everett Smelter Cleanup Everett, WA

### Cleanup Continues at the Everett Smelter Site

Facility Site ID #: 2744

If you need this publication in an alternative format call reception at 425-649-7000. Persons with hearing loss, call 711 for Washington Relay Service. Persons with a speech disability, call 877-833-6341.



Everett Smelter Cleanup Site, Everett

## More Soil Cleanup Work Begins in Everett This Summer

The Department of Ecology (Ecology) removed contaminated soil from 24 properties in the Everett Smelter Cleanup area in 2011. This year, cleanup continues in two areas of the cleanup site, one north and one south of Broadway (see map on page 2). A total of 55 properties will be cleaned up.

Cleanup activities started the first week of June and will end in November. Ecology is also working on cleanup in the Everett Housing Authority's Grandview Neighborhood starting this fall.

### What to Expect this Year?

#### Cleanup:

- Ecology's contractor have begun removing contaminated soil from properties on Broadway Ave, Legion Dr, Winton Ave, 5th St, Hawthorne St and E Marine View Dr. Cleanup activities will also begin in the Grandview neighborhood this fall and will continue until Spring 2013.
- Cleanup work will likely be happening simultaneously on both sides of Broadway. Neighbors should expect heavy construction traffic and lots of activity near work areas.

#### Sampling:

- Most of the sampling work has already been completed this year; a few properties remain to be sampled this summer.
- If your property is scheduled for sampling this year, you should have received a letter and access agreement in the mail earlier. Ecology will not sample your property without your permission.
- Results of the 2012 sampling will be available in late September or early October.

### For More Information

#### General Questions and Public Involvement

**Meg Bommarito**, Project Manager  
Northwest Regional Office  
3190 160th Street  
Bellevue, WA 98008  
Phone: (425) 649-7256 or  
(425) 412-0372 (cell)  
Email: Meg.Bommarito@ecy.wa.gov

#### Technical or Construction Questions:

**Frank Reinart**, Upland Site Manager  
Phone: (425) 649-7287 or  
(425) 530-5169 (cell)  
Email: Frank.Reinart@ecy.wa.gov

#### Local Information Line

(425) 530-5169\*

\*This number will be checked daily. A staff member will return your call within 24 hours.

#### Health Questions:

**Jim White**  
Washington Department of Health  
Phone: (360) 236-3192 or  
Toll free 1-877-485-7316  
Email: Jim.W.White@doh.wa.gov

#### Health Information about arsenic

<http://www.doh.wa.gov/CommunityandEnvironment/Contaminants/Arsenic.aspx>  
and lead

<http://www.doh.wa.gov/ehp/Lead/default.htm>

#### Ecology's Website

[http://www.ecy.wa.gov/programs/tcp/sites\\_brochure/asarco/es\\_main.html](http://www.ecy.wa.gov/programs/tcp/sites_brochure/asarco/es_main.html)

Facility Site ID #2744



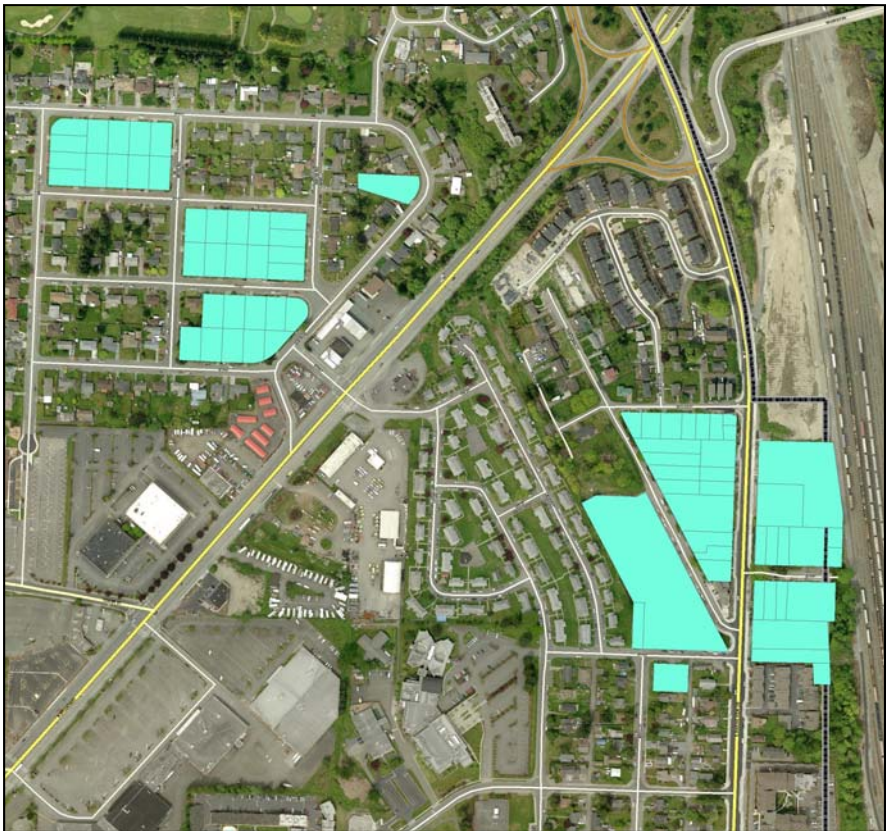
2012 Cleanup Activity



**Key**  
 Property scheduled for cleanup in 2012

2012 Sampling Activity

**Key**  
 Property scheduled for sampling in 2012



Background

The Asarco smelter, which operated in Everett in the early 1900s, caused widespread arsenic and lead contamination in northeast Everett. In addition to contamination left behind on the old smelter property, particles from the stacks settled on the surrounding areas, contaminating soil.

Ecology managed the cleanup of the most highly contaminated properties from 1999-2007. In 2009, Ecology received funding through a bankruptcy settlement with Asarco to continue with cleanup efforts. Ecology began sampling properties using this funding in 2010.

Protecting Your Family from Contamination

The most highly contaminated soil at the Everett Smelter site has already been removed or covered with buildings or pavement. However, soil with lower levels of arsenic and lead remains on a lot of properties and may be a health hazard over time unless you minimize your exposure. Until cleanup can be completed, Ecology recommends that you take the actions (box below) to protect your family from contamination that might be on your property.

Take these steps to protect your family from contaminated soil!

Wash your hands well before eating and after working or playing in the soil. Use a scrub brush to clean dirt from under your nails.

Mop, damp dust and vacuum often to remove dirt tracked in from outside.

Wash fruits and vegetables grown at home before eating them to remove soil that may be on the surface. Grow vegetables in raised beds with clean soil.

Leave your shoes at the door or outside so you don't track dirt in from outside.

Use caution if working with soil. Wear gloves and wash dirty clothes separately.

Keep pets clean. Wipe off excess dirt and mud before your pet comes inside. Brush and bathe your pet often. Give pets their own beds.

Where to find more information?

- ⇒ Visit Ecology’s website (front page) on the latest information page.
- ⇒ Stop by office hours at the Baker Community Center (1401 Poplar St) Tuesdays, 9 am-noon.
- ⇒ Visit the site signs where flyers will be posted each week. Signs are located at 518 Winton, 2404 5th Street, 906 East Marine View Drive.
- ⇒ Call us on the information line at (425) 530-5169 (local Everett number).



# City Park Sampling Completed this Spring





The Wiggums Hollow and American Legion Memorial parks are located within the Everett Smelter Cleanup area and were impacted by arsenic contamination from the former smelter. Ecology recently tested soil in Wiggums Hollow and American Legion Memorial parks for arsenic and lead contamination. In both parks, arsenic was detected above state cleanup levels (20 parts per million) in several areas. No lead was found above cleanup level in the parks.

**The contamination levels do not pose an immediate health risk.** However, contamination can be a health concern if there is repeated exposure over the long term. The main way that people are exposed to arsenic is by swallowing soil. Arsenic is not readily absorbed through the skin.

Since people spend the majority of their time at their home, Ecology is focusing cleanup efforts in these areas, where people are likely to have more exposure to contaminated soil. Ecology plans to cleanup contamination in parks after residential areas are completed, as funding allows.



## Map Key

-  = City parks inside the cleanup area
-  = Boundary of Everett Smelter Cleanup Area
-  = City parks sampled this spring
-  = City park to be sampled this summer

## What Happens Next?

- **Ecology and the Department of Health encourage park users and residents in the cleanup area to take simple steps to reduce exposure to contaminated soil.** These steps include washing hands after playing or working outside, leaving dirty shoes at the door, gardening in raised beds, wearing gloves while working in the yard, keeping pets clean, and damp dusting and mopping often.
- Ecology and the City surveyed the park to determine where actions can be taken to reduce the risk of exposure to park users. Actions will be taken in areas where exposure to soil can be minimized. For example, areas of bare soil may be covered with sod or reseeded.
- Ecology and the City have established signs inside the park to remind people to take healthy actions. More signs will be installed over the next month.
- The Viola Oursler Park will be sampled this summer.

Please visit Ecology's website for more information on healthy actions to reduce your exposure:

[http://www.ecy.wa.gov/programs/tcp/sites\\_brochure/asarco/es\\_main.html](http://www.ecy.wa.gov/programs/tcp/sites_brochure/asarco/es_main.html)