

Environmental sampling of rivers and streams in the Puget Sound region

The Washington State Department of Ecology (Ecology) will be collecting environmental samples in rivers and streams in the Puget Sound region during July through mid-October 2013. This work is part of a statewide habitat and biological monitoring program called “Status and Trends Monitoring for Watershed Health and Salmon Recovery.”

Ecology monitors seven Status and Trends Regions statewide on a four-year cycle. This effort began with the Puget Sound region in 2009, and Ecology returns to the Puget Sound region in 2013. Some of the sites sampled in 2009 will be sampled again this year, and new sites will be chosen based on random selection. In total, 50 sites will be sampled across the entire Puget Sound region. Field crews will look to find 10 suitable sites for each of five stream sizes. Five sites will be sampled twice for quality assurance. The map on the back of this page shows the Status and Trends Regions with past sampling sites.

This effort monitors streams and rivers to provide a consistent, objective picture of habitat and biological conditions and to detect regional trends. Habitat monitoring looks at a river or stream’s shape, bottom composition, shade, vegetation structure, water quality, and sediment chemistry. Biological monitoring looks at fishes and smaller bottom-dwelling species.

Ecology contracted with the Amnis Opes Institute to conduct this year’s fieldwork. The contractor obtains access permission from landowners prior to sampling.

Reports

Ecology produces periodic reports to describe stream conditions it finds. Study results will help policy makers prioritize the region’s environmental solutions. *Status of Puget Sound Tributaries 2009: Biology, Chemistry, and Physical Habitat*, the latest report from this region, is available on Ecology’s website:

<https://fortress.wa.gov/ecy/publications/summarypages/1203029.html>

Web resources to learn more about Watershed Health Monitoring

Watershed Health Monitoring website
www.ecy.wa.gov/programs/eap/stsmf

Data from this monitoring effort is available through the STREAM database.
<https://fortress.wa.gov/ecy/eimreporting/STREAM>

Contractor Amnis Opes Institute is at
www.amnisopes.com.

This work informs The State of the Sound report at The Puget Sound Partnership.
www.psp.wa.gov/sos.php

Ecology Contact

Glenn Merritt
360-407-6777
glenn.merritt@ecy.wa.gov

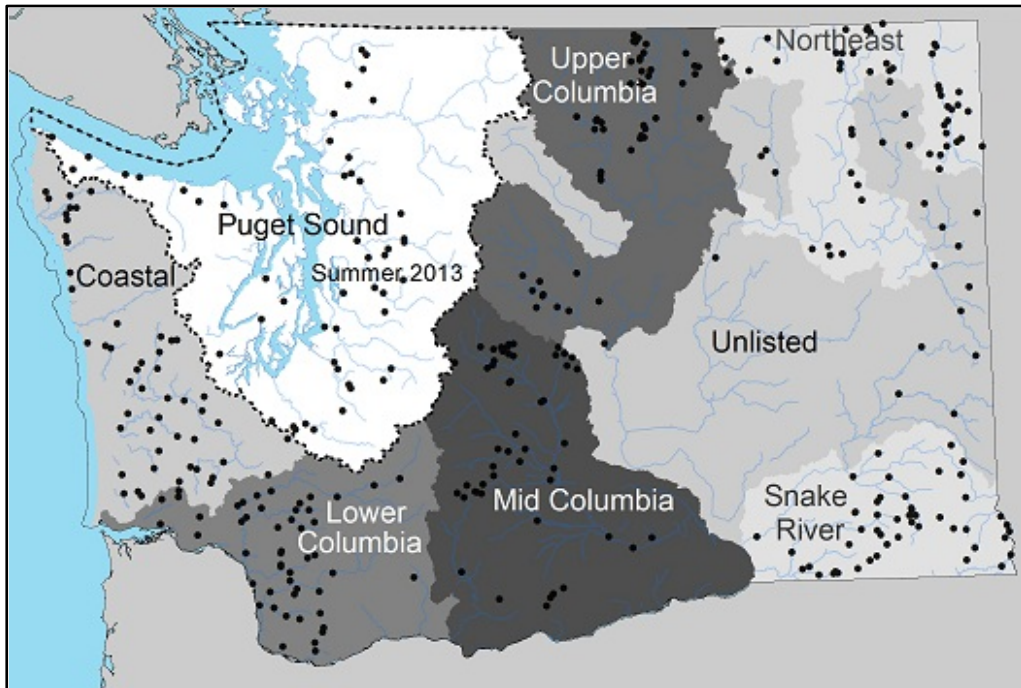
Special accommodations

If you need this document in a version for the visually impaired, call 360-407-6764.

Persons with hearing loss, call 711 for Washington Relay Service.

Persons with a speech disability, call 877-833-6341.

Map of Status and Trends Regions for Watershed Health and Salmon Recovery



Dots signify past sampling sites. The Puget Sound Region was last studied in 2009, and it will be re-sampled in 2013.