



***Cheirimedeia zotea* (J.L. Barnard, 1962)**

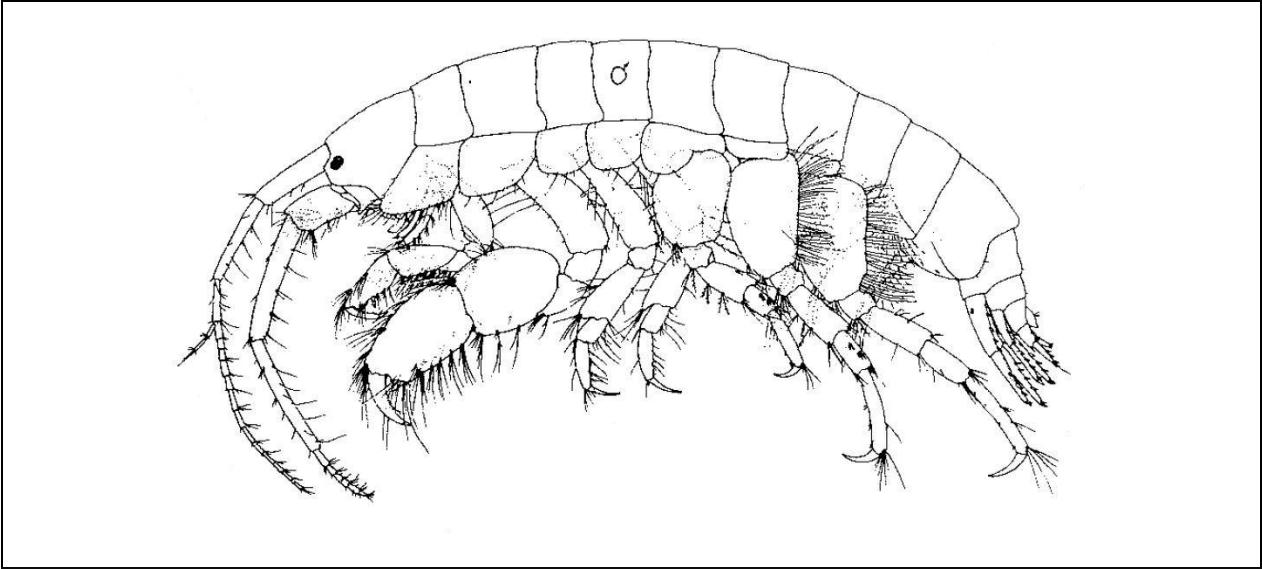
Nomenclature	
Phylum	Arthropoda
Class	Malacostraca
Order	Amphipoda
Family	Corophiidae
Authority	(J. L. Barnard, 1962)
Original Description	Barnard, J.L. 1962.
Common Synonyms (S) Previous Names (PN)	<i>Protomedeia zotea</i> (basionym)


Distribution	
Type Locality	Monterey Bay, California
Geographic Distribution	Long Beach, Vancouver Island, B.C. (48°48.5' N, 125°11.0'W) south to Monterey Bay, California (37°48.5' N, 122'W) (Conlan 1983).
Habitat	Occurring from 21 to 67 m depth on shelly sediments in protected and semi-protected coasts (Conlan 1983).



Description
From Conlan 1983
<p><b>Male:</b> A1 shorter than A2, peduncular segment 3 about half the length of segment 1; A2 moderately setose. Maxilla 1 lacks setal group at base of palp. Margins of coxae 1-5 moderately setose. G1, segment 2 not posterodistally produced into a lobe; segment 5 as long as segment 6; segment 6 distally tapered, hind margin not cusped, palm transverse. G2, segment 2 not anteriorly flanged and lacking posterior tooth at junction of coxa; segment 5 subequal to and wider than segment 6; segment 6 distally tapered, hind margin not cusped, palm transverse and bearing a medial tooth and an articulating defining spine; dactyl evenly curved and overlapping the palm by more than half its full length.</p> <p>P3 and P4, anterior margin of segment 4 barely setose, segment 4 anterodistally produced over segment 5; dactyl shorter than segment 6. P5, coxa somewhat deeper than coxae 3-4, segment 2 somewhat anteriorly bulged. Epimera bearing a lateral ridge. U3, inner ramus less than half the length of the outer, spines short and stout.</p> <p><b>Female:</b> G2, segment 5 shorter than segment 6; segment 6 distally tapered, palm transverse, dactyl overlapping palm by more than half its length. Otherwise similar to male.</p>

*Cheirimeideia zotea*



Diagnostic Characteristics	
Diagnostic Characteristics	Photo, Illustrations (Credit: J. Cordell)
Gnathopods 1 and 2 (♂,♀), palm transverse	 <p><i>Cheirimeideia zotea</i> gnathopod 1 (♂)</p>

*Cheirimeideia zotea*

Gnathopod 2 (♂)  
different in form from  
gnathopod 1; segment  
6 distally tapered,  
dactyl overlapping the  
palm by more than  
half its full length,  
segment 5 slightly  
broader than segment  
6



*Cheirimeideia zotea* gnathopod 2 (♂)

Uropod 3, inner ramus  
half the length of the  
outer, spines short  
and stout



*Cheirimeideia zotea* uropod 3

## *Cheirimeдея zotea*

Peraeopods 3 and 4,  
dactyl shorter than  
segment 6



*Cheirimeдея zotea* pereopod 3

### Related Species and Characteristic Differences

Species Name	Diagnostic Characteristics

### Comments

### Literature

- Barnard, J.L. 1962. Benthic marine Amphipoda of southern California: Families Aoridae, Photidae, Ischyroceridae, Corophiidae, Podoceridae. *Pacific Naturalist*, 3: 50-52. (3: 1-72). (pp. 50-52)
- Barnard, J.L. 1973. Revision of Corophiidae and related families (Amphipoda). *Smithsonian Contributions to Zoology*. 151:1-27. (p.23)
- Chapman, J. W. 2007. Gammaridea. In: Carlton, J. T., Eds. *The Light and Smith Manual. Intertidal Invertebrates from Central California to Oregon*. 4<sup>th</sup> ed. Los Angeles, CA: University of California Press. pp. 545-618. (p. 563)
- Conlan, K.E. 1983. The amphipod superfamily Corophioidea in the northeastern Pacific region. 3. Family Isaeidae: systematics and distributional ecology. *National Museums of Canada, National Museums of Natural Sciences, Publications in Natural Sciences*: 1-75. (pp. 41-42)

*Cheirimeдея zotea*

More Information		
<p>More information about Puget Sound benthic invertebrates is available at: <a href="http://www.ecy.wa.gov/programs/eap/psamp/index.htm">http://www.ecy.wa.gov/programs/eap/psamp/index.htm</a></p>	<p>Prepared by Julianne Ruffner (Department of Ecology), Cassandra McNeal (University of Washington – Tacoma), Jeffery Cordell (University of Washington - Seattle) on 2/6/13. This document is available on the Department of Ecology’s website at <a href="https://fortress.wa.gov/ecy/publications/SummaryPages/1403223.html">https://fortress.wa.gov/ecy/publications/SummaryPages/1403223.html</a>.</p>	<p>If you need this document in a format for the visually impaired, call (360) 407-6764. Persons with hearing loss can call 711 for Washington Relay Service. Persons with a speech disability can call (877) 833-6341.</p>