

Padilla Bay Newsletter

A Joint Publication of the Padilla Bay Foundation and Padilla Bay National Estuarine Research Reserve

Summer 2014



Padilla Bay

National Estuarine Research Reserve

Padilla Bay National Estuarine Research Reserve is managed by the Washington State Department of Ecology under the National Estuarine Research Reserve System established by NOAA.

www.padillabay.gov

swood@padillabay.gov

10441 Bay View-Edison Road
Mount Vernon, WA 98273
(360) 428-1558



The Padilla Bay Foundation is a membership-based non-profit organization formed in 1987. Its mission is to help preserve the Padilla Bay estuary in Skagit County, Washington, through support of Padilla Bay National Estuarine Research Reserve.

Padilla Bay Foundation
www.padillabayfoundation.org
PO Box 1305
Mount Vernon, WA 98273
(360) 757-3234
foundation@padillabay.gov

For more news, research updates, program details, see our website at www.padillabay.gov.

Publication No. 14-06-021

More than mudflats: Let's sketch Bay View

Calling all artists and artist wannabes. Enjoy the height of summer with a weekend of drawing in the community of Bay View.



Lesson One

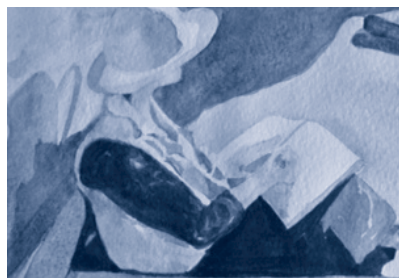
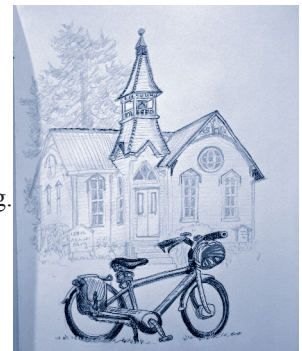
Saturday, July 19, 9:00-1:00

If you're unsure of your skills and want some coaching and practice, join Libby Mills on Saturday morning, July 19 for Lesson One. Details are on page 3 with our summer events. Learn some new skills on Saturday, and join the fun on Sunday.

Afternoon of Sketching

Sunday, July 20, 1:00-5:00

Come out to Bay View and draw with us. Join with local experts, enthusiastic amateurs, and complete novices for an afternoon of sketching. The subjects are limitless. You might see the mudflats if the tide is out or the bay if the tide is in. You can sit back and observe the houses, the church, the gardens, the park, the upland trail or the aquarium. . . or you might want to look more closely at the critters (including people!) that live in those places. Then do some sketches....or add a bit of color with paints or colored pencils. At the end of the day (4:00) bring your paper or sketch book back to the Padilla Bay Interpretive Center and share your efforts while you have some refreshments and laugh with your fellow art adventurers.



This is open to all ages and skill levels and it is free. No registration necessary. Meet at the Interpretive Center at 1:00 for maps, ideas, and all the details. Questions? Go to the Edna's Neighbor's website at ednasneighbors.wordpress.com or call Mary at 360-707-0588 or Frances at 360-757-0941.



How You Can Help

Grassroots involvement is the core of Padilla Bay Foundation’s commitment to protecting our estuaries and supporting the Padilla Bay National Estuarine Research Reserve. Members of the Padilla Bay Foundation contribute directly to environmental education and research at Washington State’s only Estuarine Research Reserve.

Memberships can be for multiple years. Please consider payment of 2 or 3 years at a time, as this will save the Foundation considerable labor and mailing costs and insure that your dues work harder supporting the programs you care about.

Categories of membership are:

Senior/Student	\$25
Individual	\$35
Family	\$50
School/Organization	\$50+
Supporting	\$75
Sustaining	\$100+
Small Business	\$100+
Sponsor	\$250
Patron	\$500
Steward	\$1000

Send your contribution to:

Padilla Bay Foundation
 PO Box 1305
 Mount Vernon, WA 98273
 (360) 757-3234
 a 501(c)(3) organization

Visit our blog at www.padillabayfoundation.org.



Foundation Board Members

President: Jude Apple
 Vice-president: Glenda Alm
 Secretary: Paul Dinnel
 Treasurer: Deb Canon

Ed Gastellum
 Mary Heath
 Kraig Kemper
 Mark Kresovsky
 Cort Liddell
 Tim Manns
 Anne Middleton
 Carl Molesworth
 Eric Shen
 Gail Smith
 Rebecca Spurling
 Tom Woodard
 Sylvia Yang
 Chet Yeo

Terry Stevens - Advisory Member
 Kay Reinhardt - Administrator

Name _____ Address _____ City/State/Zip _____ E-mail address _____	Membership Category _____ (see reverse) Membership Amount \$ _____ Extra Donation \$ _____ <input type="checkbox"/> Check enclosed <input type="checkbox"/> Charge my card (VISA/Mastercard)
mail to: Padilla Bay Foundation P. O. Box 1305 Mount Vernon, WA 98273	Card # _____ Expiration Date _____ Signature _____



Padilla Bay

National Estuarine Research Reserve

Summer Events

Presentations for June, July and August 2014

Wild Edible and Medicinal Plants

Come and experience our annual celebration of late spring's bounty. Join naturalist Marlee Osterbauer in this search for wild edible plants. She will share her extensive knowledge of plant uses and folklore. Weather may be chilly, so dress appropriately. You may want to bring a notebook and pencil. This 2 hour class is offered twice. **Saturday, June 7 and Sunday June 8, 2:00-4:00.** Please register online or call the Interpretive Center.

Learn to Sketch: Lesson One

If you've ever said, "Sure wish I could draw," here's your opportunity. Learn to make lines on paper that copy the lines of objects and the landscapes in nature that you see. Artist and naturalist, Libby Mills will help you with "blind contour" and "gesture" line drawings, negative space line drawing, and how to divide and plan a page for success. Make art part of your summer. Everyone is welcome, whether you haven't sketched in years, or you never had a chance to learn. Bring a sit-pad or portable chair, lunch, water, and pencil, pen and paper or sketchbook. **Saturday, July 19, 9:00-1:00** Please register online or call the Interpretive Center. Once you've tried sketching, join the fun on Sunday as we sketch Bay View together. (See page 1.)

Butterflies of Field and Garden

Join our naturalist-neighbor, Libby Mills for a close-up look at butterflies (Lepidoptera) in western Washington. Learn the host plants to encourage caterpillar success of your favorite "leps", which flowers encourage butterfly success and how to go butterfly watching in Washington. We'll have a little indoor time looking at a slide show and outdoor time trying to find some butterflies. Weather and bloom will have a definite effect on our field time. Bring snacks or lunch for a break at noon. **Sunday, July 27, 10:00-1:00.** Please register online or call the Interpretive Center.

Aquarium Tour and Fish Feeding

Come and find out what's new and exciting in our aquariums. Join aquarist, Mark Olson for a behind-the-tanks view of the system, and a close-up look at the amazing critters in the tanks. **Saturday, August 2, 11:00.** No need to register. Just join us in the aquarium room at 11:00.

Sea Star Wasting Syndrome

Sea stars along much of the Pacific coast of North America are experiencing a mass mortality called sea star wasting syndrome. WWU researcher, Ben Miner will share updates on the disease in the Salish Sea, results from his research, and opportunities for citizen monitoring. **Friday, August 22, 2:00-3:00.** Please register online or call the Interpretive Center.

Mud Flat Safaris

When the tide goes out at Padilla Bay, it goes all the way out! Come explore this huge expanse of mud, teeming with life. Fearless guides will lead you on a trek into the seldom seen world of the estuary's mud flat. Come with old shoes that tie or snug boots. All ages welcome. The programs begin at the Padilla Bay Interpretive Center, and end at Bay View State Park. Call the Interpretive Center or register online.

Friday, June 27 from 10:00-12:00
Thursday, July 10 from 10:00-12:00
Saturday, July 26 from 10:00-12:00
Tuesday, August 12 from 12:30-2:30
Friday, August 22 from 10:00-12:00

Beach Seines

No need to get your feet wet to see what's living out there in the bay. Just meet on the beach at Bay View State Park and watch while we pull a fish net through the water. Come and learn more about our fine finned friends! No registration necessary

Tuesday, July 8 at 12:30
Tuesday, July 22 at 1:00
Friday, August 1, at 1:00
Saturday, August 9 at 1:00
Wednesday, August 27 at 1:00

The Breazeale Interpretive Center is open to the public
Wednesday-Sunday, 10:00-5:00.

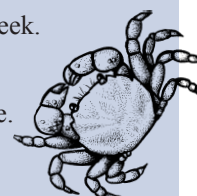
Staff are available 7 days a week.

Closed Friday, July 4.

Register online or by phone.

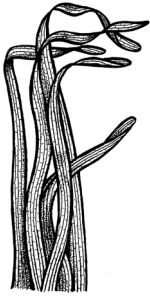
www.padillabay.gov

(360) 428-1558



Monthly Youth Programs Offer Fun Learning

Mini Explorers are the 3-5 year old learners. We look at a new topic each month, with stories, games, hands-on observations, art projects, and plenty of action. Call the Interpretive Center to register or register online.



June 25 & 26, 10:00 & 1:00

Elegant Eelgrass—This is Padilla Bay's favorite plant, and we've got heaps of it. We'll take a trip to the beach to see this fabulous plant that is home to so many animals.

July 23 & 24, 10:00 & 1:00

Mud Flat Safari—Head for the mud to see what lives beneath the tide in Padilla Bay. Come with a jacket and snug boots or old shoes that tie for this trek to the beach.

August 13 & 14, 10:00 & 1:00

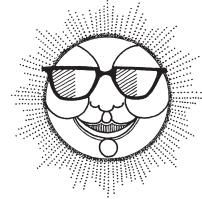
Life on a Rock—Lots of plants and animals make their homes on rocks. We'll look closely at rocky homes in Padilla Bay to see who's hiding and hanging on tight.



Junior Ecologists are 6-9 year olds who have fun exploring the estuary. Excursions to the beach, science experiments, games, art projects, and studying life in the bay—this program is guaranteed fun! Call the Interpretive Center or register online.

June 20 & 21, 10:30-12:00

Here Comes the Sun—Celebrate the longest days of the year as we learn about how our sun gives energy to everything around.



July 11 & 12, 10:30-12:00

Plenty of Plants - We'd be in big trouble without the producers. Find out all about estuary plants from tiny plankton to giant kelp.

August 8 & 9, 10:30-12:00

Mud Flat Safari—Head for the mud to see what lives beneath the tide in Padilla Bay. Come with a jacket and snug boots or old shoes that tie for this trek to the beach.



Padilla Bay National Estuarine Research Reserve
Breazeale Interpretive Center
10441 Bay View-Edison Road
Mount Vernon, WA 98273

PRSR STD
US POSTAGE PAID
WA STATE DEPT
OF PRINTING 98501



Padilla Bay