

Padilla Bay Newsletter

A Joint Publication of the Padilla Bay Foundation and Padilla Bay National Estuarine Research Reserve

Winter 2014-2015



Padilla Bay

National Estuarine Research Reserve

Padilla Bay National Estuarine Research Reserve is managed by the Washington State Department of Ecology under the National Estuarine Research Reserve System established by NOAA.

www.padillabay.gov

swood@padillabay.gov

10441 Bay View-Edison Road
Mount Vernon, WA 98273
(360) 428-1558



The Padilla Bay Foundation is a membership-based non-profit organization formed in 1987. Its mission is to help preserve the Padilla Bay estuary in Skagit County, Washington, through support of Padilla Bay National Estuarine Research Reserve.

Padilla Bay Foundation
www.padillabayfoundation.org
PO Box 1305
Mount Vernon, WA 98273
(360) 757-3234
foundation@padillabay.gov

For more news, research updates, program details, see our website at www.padillabay.gov.

To request materials in a format for the visually impaired, call the Reserve at 360-428-1558, Relay Service 711, or TTY 877-833-6341.

Publication No.
14-06-035

Welcome to New Volunteer Coordinator, Catherine Buchalski

The Padilla Bay Foundation is excited to welcome Catherine Buchalski as our first Volunteer Coordinator. Catherine will be responsible for the recruitment, training, support, and coordination of volunteers, melding several existing volunteer programs. The new position was created by a group of local marine organizations with similar missions: the Padilla Bay Reserve (Department of Ecology), the Padilla Bay Foundation, Friends of Skagit Beaches, the Skagit Marine Resource Committee, and Skagit County. Catherine was selected from a large pool of applicants because of her experience coordinating the Skagit Beach Watchers program, her degrees in Marine Science, Policy, and Management, and her strong interpersonal skills. Her personal mission speaks directly to her new responsibilities: "My mission is to actively engage the public in conserving coastal and marine environments through partnership, empowerment, communication, and accessible education. I believe in ecosystems based management, the power of individual stewardship, and the benefits of teamwork for the preservation of our invaluable waters." Welcome to our team, Catherine.



2015 Lecture Series

Padilla Bay Foundation is planning its 2015 FREE lecture events, so be on the lookout for notice of those on the Reserve website: padillabay.gov - and at the Foundation's blog: padillabayfoundation.org. Members will be invited by mail. We look forward to seeing you at those events and we sincerely thank you for your support of the Foundation which supports your Estuarine Research Reserve!



How You Can Help

Grassroots involvement is the core of Padilla Bay Foundation’s commitment to protecting our estuaries and supporting the Padilla Bay National Estuarine Research Reserve. Members of the Padilla Bay Foundation contribute directly to environmental education and research at Washington State’s only Estuarine Research Reserve.

Memberships can be for multiple years. Please consider payment of 2 or 3 years at a time, as this will save the Foundation considerable labor and mailing costs and insure that your dues work harder supporting the programs you care about.

Categories of membership are:

Senior/Student	\$25
Individual	\$35
Family	\$50
School/Organization	\$50+
Supporting	\$75
Sustaining	\$100+
Small Business	\$100+
Sponsor	\$250
Patron	\$500
Steward	\$1000

Send your contribution to:
 Padilla Bay Foundation
 PO Box 1305
 Mount Vernon, WA 98273
 (360) 757-3234
 a 501(c)(3) organization

Visit our blog at www.padillabayfoundation.org. You’ll find photos from July’s very successful Sketching Bay View event.



Foundation Board Members

President: Glenda Alm
 Vice-president: Paul Dinnel
 Treasurer: Deb Canon

Jude Apple
 Ed Gastellum
 Mary Heath
 Mark Kresovsky
 Tim Manns
 Anne Middleton
 Carl Molesworth
 Eric Shen
 Gail Smith
 Rebecca Spurling
 Connie Walser
 Todd Woodard
 Chet Yeo

Terry Stevens - Advisory Member
 Kay Reinhardt - Administrator

Name _____ Address _____ City/State/Zip _____ E-mail address _____	Membership Category _____ (see reverse) Membership Amount \$ _____ Extra Donation \$ _____ <input type="checkbox"/> Check enclosed <input type="checkbox"/> Charge my card (VISA/Mastercard)
mail to: Padilla Bay Foundation P. O. Box 1305 Mount Vernon, WA 98273	Card # _____ Expiration Date _____ Signature _____



Presentations for December, January, and February 2014

High Arctic Bird Migration

Arctic birds represent some of the planet's best cold-adapted, energetically efficient and long distance migrants. We will explore these attributes, breeding biology and behavioral ecology for classic and lesser known polar dwellers like: Arctic Tern, Red Knot, Golden Plover, Snow Bunting and more. Join us for a lively and insightful perspective on these amazing animals! David Drummond is a research wildlife biologist at the non-profit Merlin Falcon Foundation, as well as on expedition ships in the high Arctic and Antarctica. **Saturday, December 6, 1:00-2:30.** Please call or register online.

Winter Birds from Upland to Bay to Skagit Flats

Our hardy resident birds are busy with winter foraging, while migrants from the north are filling the fields and bays. Come explore the uplands, farmland, and waters around Padilla Bay with Libby Mills. Bring warm layers and a snack. Binoculars are available for those who need them. We'll meet at the Interpretive Center parking lot. **Saturday, December 13, 9:00-12:00.** Please register online or call the Interpretive Center.

Introduction to Hawks of the Skagit

Learn to recognize the most common species in our area with raptor biologist and falcon aficionado, Bud Anderson. A slide presentation from 9:00-11:00 will introduce you to raptor biology, field characteristics, and common behaviors. The afternoon field trip runs until around 2:00 and is limited to 15 participants. **Saturday, January 3, 9:00-11:00.** Register online or by phone. There is a separate registration for the field trip.

Raptor Class

The Skagit Flats are nationally recognized for their hundreds of wintering birds of prey. This class will teach about different kinds of raptors, emphasizing field identification and the particularly fascinating element of winter behavior. Instructor Bud Anderson has studied raptors for over 35 years, and has an incredible knowledge of local populations and peregrine falcons. This 5 week class meets Tuesdays from 7:00-9:00PM beginning January 6, with a Saturday field trip. The class fee is \$175 per person. To register, send check or money order to the Falcon Research Group, PO Box 248, Bow, WA 98232.

The Breazeale Interpretive Center is open to the public
Wednesday-Sunday, 10:00-5:00.

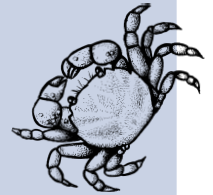
Staff are available 7 days a week.

Closed December 25 and January 1.

Register online or by phone.

www.padillabay.gov

(360) 428-1558



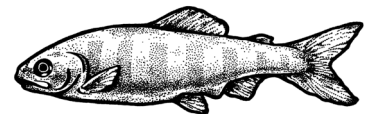
An Introduction to Color Pencil Drawing

Enjoy one of the dark days of winter quietly studying the properties of colored pencil on paper. This is a great medium to take into the field and to pack along for a cup of winter tea — in a local cafe or half way around the world: a portable art supply that's not too messy.

Join local naturalist and artist, Libby Mills to learn the basics of color, color layering, blending, establishing light and dark values in color and impressing lines and texture into your paper. Then have fun experimenting to discover the different properties of this medium. You'll get a good start in this workshop and can use it as a springboard for learning more on your own. Bring lunch. **Sunday, January 11, 10:00-2:30.** Please call or register online.

Salmon of the Skagit

The Skagit River watershed is one of only a few watersheds in Washington state that support all five species of Pacific salmon, plus steelhead and native bull trout. Join Sue Madsen, Restoration Ecologist with the Skagit Fisheries Enhancement group to learn about the habitat needs and current status of salmon populations in the Skagit basin. Sue will discuss how local salmon stocks are doing, and what habitat features are important for each species. **Saturday, January 24, 1:00-2:30.** Please call or register online.



Aquarium Tour and Fish Feeding

Come and find out what's new and exciting in our aquariums. Join aquarist, Mark Olson for a behind-the-tanks view of the system, and a close-up look at the amazing critters in the tanks. **Saturday, February 7, 11:00.** No need to register. Just join us in the aquarium room at 11:00.

Monthly Youth Programs Offer Fun Learning

Mini Explorers are the 3-5 year old learners. We look at a new topic each month, with stories, games, hands-on observations, art projects, and plenty of action. Call the Interpretive Center to register or register online.

December 10 & 11, 10:00 & 1:00

Winter Habitat, –All animals need food, water, and shelter. We'll learn about neighbors in the backyard, and build winter feeders and homes.



January 14 & 15, 10:00 & 1:00

Why Animals Don't Wear Clothes– Feathers, shells, scales, and slime: estuary animals have all sorts of ways to dress.



February 11 & 12, 10:00 & 1:00
Rocks up Close–From exploding volcanoes to tiny grains of beach sand, rocks are the greatest! This is a fun introduction to geology.



Junior Ecologists are 6-9 year olds who have fun exploring the estuary. Excursions to the beach, science experiments, games, art projects, and studying life in the bay–this program is guaranteed fun! Call the Interpretive Center or register online.

December 12 & 13, 10:30-12:00

Round and Round–Many things in the estuary get used over and over. We'll have a fun time exploring how things like water, air and nutrients are changed and recycled in Padilla Bay.

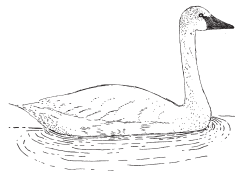
January 23 & 24, 10:30-12:00

Octopus–Come explore the mysterious world of these amazing eight-legged creatures.



February 20 & 21, 10:30-12:00

Swans–These large, graceful birds come from Alaska and the Canadian tundra to winter in the Skagit Valley. Learn all about them and take home your own swan game.



Padilla Bay National Estuarine Research Reserve
Breazeale Interpretive Center
10441 Bay View-Edison Road
Mount Vernon, WA 98273

PRSR STD
US POSTAGE PAID
WA STATE DEPT
OF PRINTING 98501



Padilla Bay