

Public Comment Period and Update for the Everett Smelter Cleanup Project

Ecology has a lot of work planned for 2014 in the Everett Smelter Cleanup Area! This fact sheet will outline the work planned and give you important information about an upcoming public comment period and public meeting. Here is what we have coming up!

1. Lowland Area Interim (Partial) Cleanup:

- Removal of potentially contaminated soil below East Marine View Drive. See below and page 2 to learn more.

2. Upland Soil Cleanup and Sampling:

- Ecology will finish cleanup work on 21 residential properties this spring. For more on this work, see page 3.
- In spring through fall, Ecology will sample soil in yards of 100 residences in the cleanup area. See page 3 to learn more.

3. Park Soils Cleanup

- Ecology will begin cleanup work at American Legion Memorial Park. See page 3 to learn more.

Public Comment Period for an Interim (partial) Cleanup Action in the Lowlands Area

Ecology is proposing to dig up and possibly remove a small area of soil below East Marine View Drive this summer. Our data indicate there may be some arsenic in soil above cleanup levels at this location. This work will help us to:

- Confirm the presence of and remove the source of the arsenic contamination.
- Reduce or eliminate ongoing groundwater contamination.
- Gain valuable information about the extent and characteristics of contamination on the former smelter site.

You are invited to review the Interim Action Scope of Work and send your comments to Ecology for review. Document review locations are listed to the right. See page 2 for more information.

Send comments from February 20 - March 24, 2014.

You Are Invited to a Public Meeting on March 11!

Ecology is hosting a meeting to discuss this year's work.

**Snohomish County PUD Building, 2320 California Street,
Everett, 6:30 pm - 8:30 pm
Auditorium**

For More Information:

General Questions

Meg Bommarito, Project Manager
Northwest Regional Office
Phone: (425) 649-7256 or
(425) 412-0372 (cell)
Email: Meg.Bommarito@ecy.wa.gov

Lowland Area Questions

Sandra Matthews, Lowlands Manager
Northwest Regional Office
Phone: (425) 649-7206
Email: Sandra.Matthews@ecy.wa.gov

Upland Area Questions

Brian McClure, Uplands Manager
Northwest Regional Office
Phone: (425) 649-7287
Email: Brian.McClure@ecy.wa.gov

Document Review Locations:

Everett Public Library
2702 Hoyt Ave.
Everett, WA 98201
Phone: (425) 257-8010

**Washington Department of Ecology
Northwest Regional Office**
3190 160th Avenue SE
Bellevue, WA 98008
Call for an appointment:
(425) 649-7190

Ecology's Website
http://www.ecy.wa.gov/programs/tcp/sites_brochure/asarco/es_main.html

Facility Site ID #2744

Follow Our Soil Safety Recommendations if You Live in the Cleanup Area!

Although the most highly contaminated soil at the Everett Smelter site has already been removed, soil with lower levels of contamination remains on many properties and may be a health hazard over time. If you live in the Everett Smelter Cleanup area, please take the following steps to protect your family from contaminated soil:

- Leave your dirty shoes at the door.
- Wear gloves when you work in the yard.
- Damp dust and mop often.
- Plant flowers and plants in raised beds.
- Keep pets clean.
- Wash your hands after playing or working outside.



Have Health Questions? Contact **Jim White**, Toxicologist at the Washington Department of Ecology
Phone: (360) 407-7324 or Email: jawh461@ecy.wa.gov

If you need this publication in an alternative format call reception at 425-649-7000. Persons with hearing loss, call 711 for Washington Relay Service. Persons with a speech disability, call 877-833-6341.

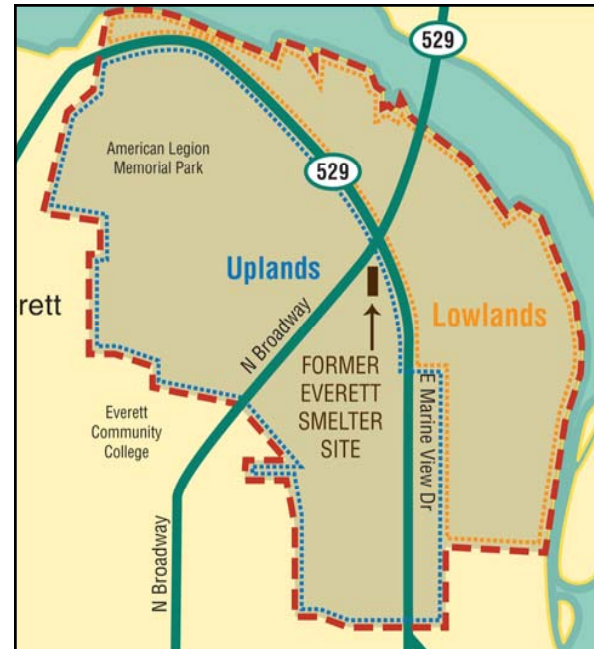
Everett Smelter Cleanup Site

Everett Smelter Site Background

The Everett Smelter, in operation from 1894 to 1912, processed lead, gold, silver, and arsenic. In 1912, the smelter was demolished.

Ecology discovered the contamination in 1990 and began investigating the area. Ecology found arsenic, lead, cadmium and other metals in soils at the former smelter site. Arsenic and lead were also present in an area outside of the former smelter footprint above state cleanup levels. Ecology began cleanup, with Asarco and Everett Housing Authority, of contaminated soils in the early '90s. Cleanup has continued on and off for the last several years. In 2009, Ecology received a bankruptcy settlement from Asarco to continue with cleanups.

Ecology developed a plan to clean up properties within the western side of the site, known as the Uplands. Ecology has also been investigating the Lowlands area (eastern side of the site) for several years to fully determine the impact from smelter operations.



1. Lowlands Area Interim (Partial) Cleanup Action



The Lowlands is the area of the Everett Smelter Cleanup Site that lies along the Snohomish River. During the historical smelter operation the Lowland Area was an undeveloped flood plain area. Today, the area is primarily used for industrial purposes.

Ecology investigations to date have revealed a limited area of arsenic contamination in the deep groundwater above the state cleanup levels. The source of this contamination may be arsenic in soil below East Marine View Drive that was not removed during earlier cleanup work.

The proposed interim (partial) cleanup action will help determine if arsenic contaminated soil is present below East Marine View Drive and possibly acting as a source of contamination to the groundwater in the Lowlands. Any arsenic impacted material found above state cleanup levels will be removed.

Long Term Next Steps:

- 2014**
 - Finalize the Supplemental Investigation Report.
- 2015**
 - Develop a Feasibility Study to determine what additional cleanup work is needed in the Lowland.
 - Draft a cleanup action plan.
- 2016**
 - Public comment period on the Investigation Report, Feasibility Study and Draft Cleanup Action Plan.

2014 Next Steps in the Lowland:

- March**
- Review and respond to public comments
- Spring**
- Bid project to get contractor
- Summer**
- Work will take about two weeks

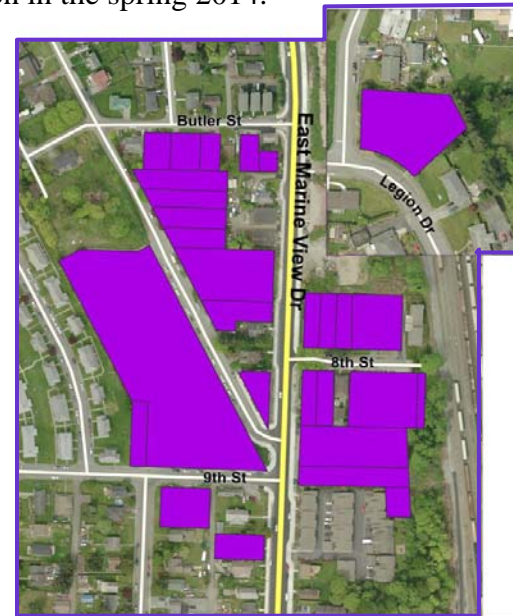
Everett Smelter Cleanup Site

2. Uplands Soil Cleanup and Sampling

Ecology continues with efforts to remove contaminated soil from residential properties. To date, more than 130 properties have participated in the cleanup program.

2013 Residential Cleanup Group

Cleanup work will wrap up on 23 properties east and west of East Marine View Drive near 8th and 9th streets and one property on Legion in the spring 2014.



2014 Residential Cleanup Group

Ecology will be cleaning up 20 properties next year on 6th, 7th and 8th Streets between Winton and Wayne Ave.



Ongoing Soil Sampling

- Ecology is sampling about 100 properties this spring and summer.
- If your property is scheduled for sampling this year, you should have already received an access agreement request in the mail in January. This program is completely voluntary.

3. Park Soils Cleanup: American Legion Memorial Park

- There are three city parks in the Everett Smelter Cleanup Area: American Legion Memorial Park, Wiggums Hollow Park and the Viola Oursler Overlook.
- Ecology sampled most of the park areas and found contamination above state cleanup levels in soil. Ecology will complete sampling in American Legion Memorial Park in the overlook area this spring.
- Ecology is planning to remove contaminated soil from these parks over the next couple of years.
- Cleanup work will begin at American Legion Memorial Park in November 2014 and continue through Spring 2015. More information will be shared as this project moves forward.

