

# Padilla Bay Newsletter

A Joint Publication of the Padilla Bay Foundation and Padilla Bay National Estuarine Research Reserve

Spring 2015



**Padilla Bay**

National Estuarine Research Reserve

Padilla Bay National Estuarine Research Reserve is managed by the Washington State Department of Ecology under the National Estuarine Research Reserve System established by NOAA.

[www.padillabay.gov](http://www.padillabay.gov)

[swood@padillabay.gov](mailto:swood@padillabay.gov)

10441 Bay View-Edison Road  
Mount Vernon, WA 98273  
(360) 428-1558



The Padilla Bay Foundation is a membership-based non-profit organization formed in 1987. Its mission is to help preserve the Padilla Bay estuary in Skagit County, Washington, through support of Padilla Bay National Estuarine Research Reserve.

Padilla Bay Foundation  
[www.padillabayfoundation.org](http://www.padillabayfoundation.org)  
PO Box 1305  
Mount Vernon, WA 98273  
(360) 757-3234  
[foundation@padillabay.gov](mailto:foundation@padillabay.gov)

For more news, research updates, program details, see our website at [www.padillabay.gov](http://www.padillabay.gov).

To request materials in a format for the visually impaired, call the Reserve at 360-428-1558, Relay Service 711, or TTY 877-833-6341.

Publication No. 15-06-002



## Welcome to New Research Coordinator, Jude Apple

After a lengthy national search, the Reserve is pleased to announce that Dr. Jude Apple has joined our staff as the new Research Coordinator. Dr. Apple fills the position vacated by the retirement of Dr. Doug Bulthuis last spring. Jude has spent the past six years as a marine scientist at the Shannon Point Marine Center, Western Washington University studying hypoxia (low oxygen), plankton, nutrient dynamics, and ocean acidification. He has been a National Research Council postdoctoral fellow at the US Naval Research Lab, visiting research scientist at Winyah Bay/North Inlet NERR, and visiting faculty at University of Maryland Horn Point Lab. He received his B.S. (Biology) from Tufts University, M.S. from University of North Carolina at Wilmington (Marine Biology), and Ph.D. from University of Maryland (Marine and Estuarine Science) where he was a Graduate Research Fellow working in the Chesapeake Bay NERR. He is a great supporter of volunteer researchers, and looks forward to working with the new Coastal Volunteer Partnership. Welcome to our team, Jude.

## Smith-Aguero Trust Presentation on the Environment

Join us Saturday, April 18, 2015 from 1:00 to 3:00 pm for Jonathan White's presentation, "Tides - The Ocean's Dance with the Moon." This free lecture with questions and answers is sponsored by the Padilla Bay Foundation & The Smith-Aguero Trust.

## The Coastal Volunteer Partnership at Padilla Bay Celebrates New Beginnings!

On Friday, January 30 we celebrated the kick-off for the new Coastal Volunteer Partnership at Padilla Bay. This umbrella group integrates the volunteer programs and projects of several Skagit County organizations and agencies. Read more on Padilla Bay's website. [www.padillabay.gov](http://www.padillabay.gov).



**How You Can Help**

Grassroots involvement is the core of Padilla Bay Foundation’s commitment to protecting our estuaries and supporting the Padilla Bay National Estuarine Research Reserve. Members of the Padilla Bay Foundation contribute directly to environmental education and research at Washington State’s only Estuarine Research Reserve.

Memberships can be for multiple years. Please consider payment of 2 or 3 years at a time, as this will save the Foundation considerable labor and mailing costs and insure that your dues work harder supporting the programs you care about.

Categories of membership are:

Senior/Student	\$25
Individual	\$35
Family	\$50
School/Organization	\$50+
Supporting	\$75
Sustaining	\$100+
Small Business	\$100+
Sponsor	\$250
Patron	\$500
Steward	\$1000

Send your contribution to:  
 Padilla Bay Foundation  
 PO Box 1305  
 Mount Vernon, WA 98273  
 (360) 757-3234  
 a 501(c)(3) organization

Visit our blog at [www.padillabayfoundation.org](http://www.padillabayfoundation.org). You’ll find photos from July’s very successful Sketching Bay View event.



**Foundation Board Members**

President: Glenda Alm  
 Vice-president: Paul Dinnel  
 Treasurer: Deb Canon

Ed Gastellum  
 Mary Heath  
 Mark Kresovsky  
 Kara Kuhlman  
 Tim Manns  
 Anne Middleton  
 Carl Molesworth  
 Eric Shen  
 Gail Smith  
 Rebecca Spurling  
 Connie Walser  
 Todd Woodard  
 Chet Yeo

Terry Stevens - Advisory Member  
 Kay Reinhardt - Administrator

Name _____ Address _____ City/State/Zip _____ E-mail address _____	Membership Category _____ (see reverse) Membership Amount \$ _____ Extra Donation \$ _____ <input type="checkbox"/> Check enclosed <input type="checkbox"/> Charge my card (VISA/Mastercard)
mail to: Padilla Bay Foundation P. O. Box 1305 Mount Vernon, WA 98273	Card # _____ Expiration Date _____ Signature _____



**Padilla Bay**

National Estuarine Research Reserve

# Spring Events

Presentations for March, April, and May 2015



## Swans in the Skagit Valley

The swan as a mythical creature goes back to the earliest human cultures. Each year, the Skagit is the winter home of thousands of swans that nest in the arctic. Swan biologist, Martha Jordan is heavily involved in international swan conservation, and has new information and research to share. Martha will present swan mythology and life history, as well as current issues and tips for finding and observing swans without disturbing them. **Saturday, March 7, 1:00-2:30PM.** Please call or register online.

## Marvelous Molluscs of the Salish Sea

Join Jason Huntley, Padilla Bay educator for a 3-part, in-depth look at our favorite invertebrates. Come to one class, or to all three to learn more about this huge group of diverse creatures. *Part 1* - Opisthobranchs: the Salish Sea Slugs. **Saturday, March 28, 1:00-2:00PM.** *Part 2* - Cephalopods: Octopus, Squid and Tentaclad Friends **Saturday, April 18, 1:00-2:00PM.** *Part 3* - Safe in a Shell: Chitons, Limpets, Abalone, Bivalves. **Saturday, May 9, 1:00-2:00PM.** Register online or by phone.

## Spring Birding by Ear

There's no better time of year to learn to identify birds by sound as well as sight. In April, the early migrants and local residents are well established. By late May, everyone is here, loudly competing for airtime. Join naturalist, Libby Mills, listening and looking for spring birds around Padilla Bay. Be prepared for a **slow** walk around the reserve uplands. (Bring warm clothes and a warm drink. You may want a lightweight folding chair.) Binoculars and field guides are available at the Interpretive Center. Meet in the Padilla Bay parking lot. **Sunday, April 12 and Sunday, May 24, 8:00-12:00AM.** Please register online or call the Interpretive Center.

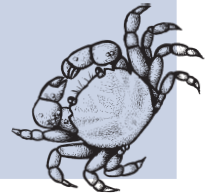
The Breazeale Interpretive Center is open to the public Wednesday-Sunday, 10:00-5:00.

Staff are available 7 days a week.

Register online or by phone.

[www.padillabay.gov](http://www.padillabay.gov)

(360) 428-1558



## Songbirds of Backyard and Beyond

In the wee hours of a spring day, birds are up and singing—busy to the max with claiming territory, finding a mate, building a nest, feeding the fam, defending their space. David Drummond, wildlife biologist with the Merlin Falcon Foundation will teach this 3-part series on Passiformes or perching birds. The in-depth class will cover field ID, songs, habitats, range, breeding and behaviors of 18 families with 56 Northwest species. You'll have two weeks between sessions for personal study and field observations. We will cover: swifts, hummingbirds, flycatchers, vireos, swallows, martins, thrushes, warblers, tanagers, grosbeaks, chickadees, bushtits, nuthatches, creepers, wrens, dippers, kinglets and pipits. So, dust-off binoculars and field guides and learn more about our feathered neighbors! **Saturdays—April 25, May 16, and June 6, 1:00-2:30PM.** Please call or register online.



## Aquarium Tour and Fish Feeding

Come and find out what's new and exciting in our aquariums. Join aquarist, Mark Olson for a behind-the-tanks view of the system, and a close-up look at the amazing critters in the tanks. **Saturday, May 2, 11:00.** No need to register. Just join us in the aquarium room at 11:00AM.

## Monthly Youth Programs Offer Fun Learning

**Mini Explorers** are the 3-5 year old learners. We look at a new topic each month, with stories, games, hands-on observations, art projects, and plenty of action. Call the Interpretive Center to register or register online.

**March 11 & 12, 10:00AM & 1:00PM**

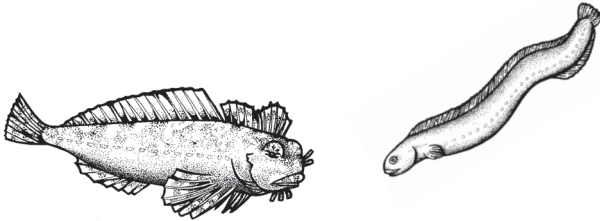
**Food Chain Fun**—*Who eats what in the estuary world? Come find out: We'll do a little eating ourselves!*

**April 1 & 2, 10:00AM & 1:00PM**

**Wet and Wonderful Water!**—*Become a water drop on an amazing journey and find out why good clean water is more precious than gold.*

**May 13 & 14, 10:00AM & 1:00PM**

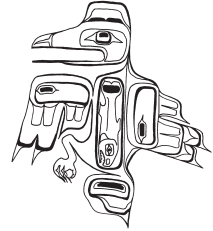
**Fabulous Fishes**—*Estuaries like Padilla Bay are important places for many kinds of fish, especially when they are young. Come and learn all about our finned friends.*



**Junior Ecologists** are 6-9 year olds who have fun exploring the estuary. Excursions to the beach, science experiments, games, art projects, and studying life in the bay—this program is guaranteed fun! Call the Interpretive Center or register online.

**March 13 & 14, 10:30-12:00AM**

**Native Americans** — *For thousands of years, people have been living near our local estuaries. Hear their stories, try their art, and find out how important the coast was to their lives.*



**April 10 & 11, 10:30-12:00AM**



**All About Algae**—*From microscopic green fuzz to majestic kelp forests, algae is the foundation of life in the sea.*

**May 8 & 9, 10:30-12:00AM**

**Songbirds of Padilla Bay's Uplands**—*Beginning birding especially for young folks: we'll take a safari through the woods and meadows of Padilla Bay in search of the many small birds that make spring so exciting. Bring binoculars—or borrow ours, and dress for outdoors.*



Padilla Bay National Estuarine Research Reserve  
Breazeale Interpretive Center  
10441 Bay View-Edison Road  
Mount Vernon, WA 98273

PRSR STD  
US POSTAGE PAID  
WA STATE DEPT  
OF PRINTING 98501



*Padilla Bay*