

# Padilla Bay Newsletter

A Joint Publication of the Padilla Bay Foundation and Padilla Bay National Estuarine Research Reserve

Summer 2015



**Padilla Bay**

National Estuarine Research Reserve

Padilla Bay National Estuarine Research Reserve is managed by the Washington State Department of Ecology under the National Estuarine Research Reserve System established by NOAA.

[www.padillabay.gov](http://www.padillabay.gov)

[swood@padillabay.gov](mailto:swood@padillabay.gov)

10441 Bay View-Edison Road  
Mount Vernon, WA 98273  
(360) 428-1558



**PADILLA BAY  
FOUNDATION**

The Padilla Bay Foundation is a membership-based non-profit organization formed in 1987. Its mission is to help preserve the Padilla Bay estuary in Skagit County, Washington, through support of Padilla Bay National Estuarine Research Reserve.

Padilla Bay Foundation  
[www.padillabayfoundation.org](http://www.padillabayfoundation.org)  
PO Box 1305  
Mount Vernon, WA 98273  
(360) 757-3234  
[foundation@padillabay.gov](mailto:foundation@padillabay.gov)

For more news, research updates, program details, see our website at [www.padillabay.gov](http://www.padillabay.gov).

To request materials in a format for the visually impaired, call the Reserve at 360-428-1558, Relay Service 711, or TTY 877-833-6341.

Publication No. 15-06-012



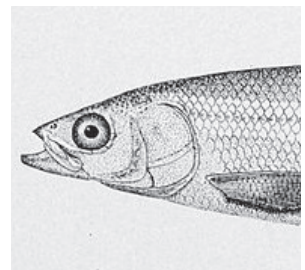
## Finding Forage Fish Eggs

Forage fish have long been a focus of the Northwest Straits Commission's work. These little fish, such as herring, sand lance and surf smelt, are key to the health of marine food webs in our region. They are fuel for endangered seabirds, salmon and orcas. They are bait for commercial and sport fisheries and a tasty treat to many people.

The Northwest Straits Commission recently trained citizen scientists to sample and identify forage fish eggs on the beach, in partnership with the Washington Department of Fish and Wildlife and the Department of Natural Resources. These volunteers will put their training to work this summer, surveying local beaches and providing important data to natural



resource managers that will help protect forage fish habitat. Learn more about the work of the Commission at [www.nwstraits.org](http://www.nwstraits.org).





# Summer Events

## Wild Edible and Medicinal Plants

Come and experience our annual celebration of early summer's bounty. Join naturalists Marlee Osterbauer and Terri Wilde in this search for wild edible plants. They will share extensive knowledge of plant uses and folklore. Weather may be chilly, so dress appropriately. A notebook and pencil are useful. This 2 hour class is offered twice. **Saturday, June 6 and Sunday June 7, 2:00-4:00PM.** Please register online or call the Interpretive Center.

## Songbirds of Backyard and Beyond

Join us for the third class in this series on backyard songbirds. David Drummond, wildlife biologist with the Merlin Falcon Foundation will complete this 3-part series on Passiformes or perching birds covering field ID, songs, habitats, range, breeding and behaviors of 18 families with 56 Northwest species. This final class is open to everyone. Dust-off binoculars and field guides and learn more about our feathered neighbors! **Saturday, June 6, 1:00-2:30PM.** Please call or register online.

## The Art of Algae

Feathery reds, glistening browns, translucent greens—Salish Sea seaweeds are as beautiful as the best tended flowers. Here's your chance to learn a bit of algae biology and identification, and create a lovely pressed mount of your favorite species. Join Padilla Bay Research Coordinator, Jude Apple and Education staff for a fun afternoon of science and art. This class is for adults and children over 12. **Friday, June 19, 1:00-4:00PM.** Please register online or call the Interpretive Center.

## The Scoop on Sea Star Health

Our local sea stars were hard hit last summer by a disease epidemic of unprecedented magnitude, covering the west coast from California to Alaska. Dr. Melissa Miner, with the Multi-Agency Rocky Intertidal Network (MARINe) collects population data for the ochre star, *Pisaster ochraceus*, at over 100 west coast sites as part of a long-term monitoring program. She will give an update on the current status of Sea Star Wasting Syndrome, and will share ways citizens can participate in ongoing monitoring. **Saturday, June 27, 10:00-11:00AM.** Please call or register online.

## Sounds of Summer Birds

Feeding the brood is the name of the game for summer birds, and it's the tail end of the bird song season. Join naturalist, Libby Mills, listening and looking for summer birds around Padilla Bay. Be prepared for a **slow** walk around the reserve uplands. (Mornings are chilly, so bring warm clothes and a warm drink. You may want a lightweight folding chair.) Binoculars and field guides are

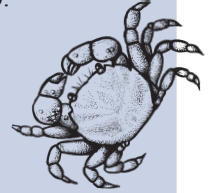
The Breazeale Interpretive Center is open to the public  
Wednesday-Sunday, 10:00-5:00.

Staff are available 7 days a week.

Closed July 3 & 4

Register online or by phone.

[www.padillabay.gov](http://www.padillabay.gov)



available at the Interpretive Center. Meet in the Padilla Bay parking lot. **Friday, July 3, 8:00AM-12:00 noon.** Please register online or call the Interpretive Center.

## Nature Sketching

Spend a quiet summer morning observing and drawing at Padilla Bay. Everyone is welcome, whether you're a beginner or expert. Artist and naturalist, Libby Mills will offer guidance and inspiration. Bring a sit-pad or portable chair, lunch, water, and pencil, pen and paper or sketchbook. **Sunday, July 12, 9:00AM-1:00PM** Please register online or call the Interpretive Center.

## Aquarium Tour and Fish Feeding

Come and find out what's new and exciting in our aquariums. Join aquarist, Mark Olson for a behind-the-tanks view of the system, and a close-up look at the amazing critters in the tanks. **Saturday, July 25, 11:00AM.** No need to register. Just join us in the aquarium room at 11:00AM.

## Mud Flat Safaris

When the tide goes out at Padilla Bay, it goes all the way out! Come explore this huge expanse of mud, teeming with life. Fearless guides will lead you on a trek into the seldom seen world of the estuary's mud flat. Come with old shoes that tie or snug boots. All ages welcome. The programs begin at the Padilla Bay Interpretive Center, and end at Bay View State Park. Call the Interpretive Center or register online.

**Wednesday, July 1 from 10:00AM-12:00 noon**

**Friday, July 17 from 12:00-2:00PM**

**Tuesday, August 4 from 12:30-2:30PM**

**Friday, August 28 from 10:00AM-12:00 noon**

## Beach Seines

No need to get your feet wet to see what's living out there in the bay. Just meet on the beach at Bay View State Park and watch while we pull a fish net through the water. Come and learn more about our fine finned friends! No registration necessary

**Tuesday, July 14 at 2:30PM**

**Wednesday, July 29 at 2:00PM**

**Tuesday, August 18 at 1:30PM**

**Wednesday, August 26 at 11:00AM**

## Monthly Youth Programs Offer Fun Learning

Mini Explorers are the 3-5 year old learners. We look at a new topic each month, with stories, games, hands-on observations, art projects, and plenty of action. Call the Interpretive Center to register or register online.

**June 24 & 25, 10:00AM & 1:00PM**

Our Feathered Friends—*Come learn about Padilla Bay's birds.*

**July 8 & 9, 10:00AM & 1:00PM**

Wiggling Worms—*These mud critters are amazing to see.*

**August 12 & 13, 10:00AM & 1:00PM**

Mudflat Safari—*Join us for an excursion out onto Padilla Bay's mudflat. Bring a jacket and snug boots or old shoes that tie.*

Junior Ecologists are 6-9 year olds who have fun exploring the estuary. Excursions to the beach, science experiments, games, art projects—this program is guaranteed fun! Call the Interpretive Center or register online.

**June 19 & 20, 10:30AM-12:00 noon**

Crusty Crustaceans—*Meet the estuary's crabs, shrimp, and crusty creatures.*

**July 10 & 11, 10:30AM-12:00 noon**

Keeping a Science Field Journal—*Drawing and writing can help you keep track of what you see and learn.*

**August 14 & 15, 10:30AM-12:00 noon**

Mudflat Safari—*Join us for an excursion out onto Padilla Bay's mudflat. Bring a jacket and snug boots or old shoes that tie.*

### Watershed Art and Discovery Day - Saturday, June 27, 11:00AM - 2:00PM

Play, create, and learn all about estuaries and the wonderful creatures that inhabit our local ecosystems through fun interactive exploration and art!

- Create your own estuary collage
- Wildlife stamp making
- Construct your own jellyfish
- Create a miniature wildlife habitat village
- And more!

Activities and classes will be taught by Artist in Residence, Barbara Summers, and Skagit Conservation Education Alliance staff. Please call the reserve or register online. [www.padillabay.gov](http://www.padillabay.gov)



Padilla Bay National Estuarine Research Reserve  
Breazeale Interpretive Center  
10441 Bay View-Edison Road  
Mount Vernon, WA 98273

PRSRT STD  
US POSTAGE PAID  
WA STATE DEPT  
OF PRINTING 98501



*Padilla Bay*