

Interim Action Plan and SEPA Notice

The State of Washington Department of Ecology (Ecology) would like your comments on proposed partial cleanup of the Monte Cristo Mining Area (MCMA) Site. The MCMA is located 4 miles SE of Barlow Pass off the Mountain Loop Highway near Silverton in Snohomish County, Washington. You can now review and comment on the:

- **Interim Action Plan (IAP)** – Describes the proposed partial cleanup
- **State Environmental Policy Act (SEPA) review** – Describes the potential environmental impact of the cleanup work

Ecology Wants Your Comments!

We are accepting comments on these documents from **May 18 - June 17, 2015**. The box to the right shows where to review documents and how to submit comments.

Interim Action Work

Ecology has developed a draft cleanup plan for the site. During the interim action (see map on page 3), we will:

- Remove contaminated soil from the: United Companies Concentrator; Comet Tram Terminal Bunk; Ore Collector; Haulage Ways; and Rainy Mine.
- Plan to dispose of contaminated soil in a United States Forest Service (USFS) repository. Dangerous waste will be disposed of at a dangerous waste landfill.

What Happens Next?

1. Ecology will review and consider all comments we receive during the comment period.
2. At the end of the comment period, we will respond to comments and finalize the draft interim action plan.
3. Work at the site will likely begin in July.
4. In the future, Ecology will develop a feasibility study to evaluate final cleanup alternatives that address contaminated soil, sediment, and water. The expected completion date for the feasibility study is late 2017.

Comments Accepted

May 18, 2015 through
June 17, 2015

Send Comments and Technical Questions to:

Matt Durkee - Site Manager
WA Department of Ecology
Toxics Cleanup Program
15 W Yakima Avenue, Ste 200
Yakima, WA 98902-3452
Phone: (509) 454-7835
E-mail: Matthew.Durkee@ecy.wa.gov

DOCUMENT REVIEW LOCATIONS

Darrington Public Library
1005 Cascade Street
Darrington WA 98241
Phone: (360) 436-1600

WA Department of Ecology
Central Regional Office
15 W Yakima Avenue, Ste 200
Yakima, WA 98902
By appointment only:
Contact Jackie Cameron,
Jackie.Cameron@ecy.wa.gov or
(509) 575-2027

Ecology's Toxics Cleanup Website
<https://fortress.wa.gov/ecy/gsp/Sitepage.aspx?csid=4550>

Mt. Baker-Snoqualmie National Forest Website
<http://www.fs.usda.gov/goto/mbs/CERCLA>

Facility/Site ID #: 2251399
Cleanup Site ID #: 4550

Why This Cleanup Matters

The Monte Cristo Mining Area is a popular recreational destination for many people each year, and is home to many sensitive species. Monte Cristo is an important part of mining history in Washington and founding of Everett.

The United States Department of Agriculture Forest Service (USFS) has identified areas that pose a threat to human health and the environment. The areas identified in the USFS Non-Time Critical Removal Action (NTCRA) that are located on private property are the subject of this draft interim action plan.

Site Contamination

Investigations have documented the presence of metals and metal like substances above screening levels in soil, water, and sediment.

The metals and metal like substances that are soil contaminants of concern due to their adverse effects on people or the environment include, but are not limited to antimony, arsenic, cadmium, and lead.

This partial cleanup covers five properties associated with five mining related facilities. The mining related facilities are the:

- United Companies Concentrator,
- Comet Tram Terminal Bunk,
- Ore Collector,
- Haulage Ways, and
- Rainy Mine.

Site Background

The MCMA is located within the Mt. Baker-Snoqualmie National Forest in Snohomish County, Washington, near the west-center margin of the Henry M. Jackson Wilderness Area. The area is situated in the extremely rugged terrain of the Cascade Mountains. The area in, and around, the Monte Cristo Mining District has a rich mining history and was important to early settlement of Washington State. Peak production from the mines occurred in 1897.

The American Smelting and Refining Company (ASARCO) bought the mining operations in 1903. In 2009, Ecology and the USFS received bankruptcy settlement funds from ASARCO to clean-up hazardous materials left behind from historical mining activity. The United States and State divided the cleanup funds equally between the USFS and Ecology due to the complexity of property ownership.

The USFS, using Comprehensive Environmental Response, Compensation, and Liability Act (CERCLA) authority, plan to conduct a Non-Time-Critical Removal Action (NTCRA). The USFS does not have authority to cleanup private land. Ecology has authority to cleanup private land from the Model Toxics Control Act (MTCA), a voter-approved initiative.

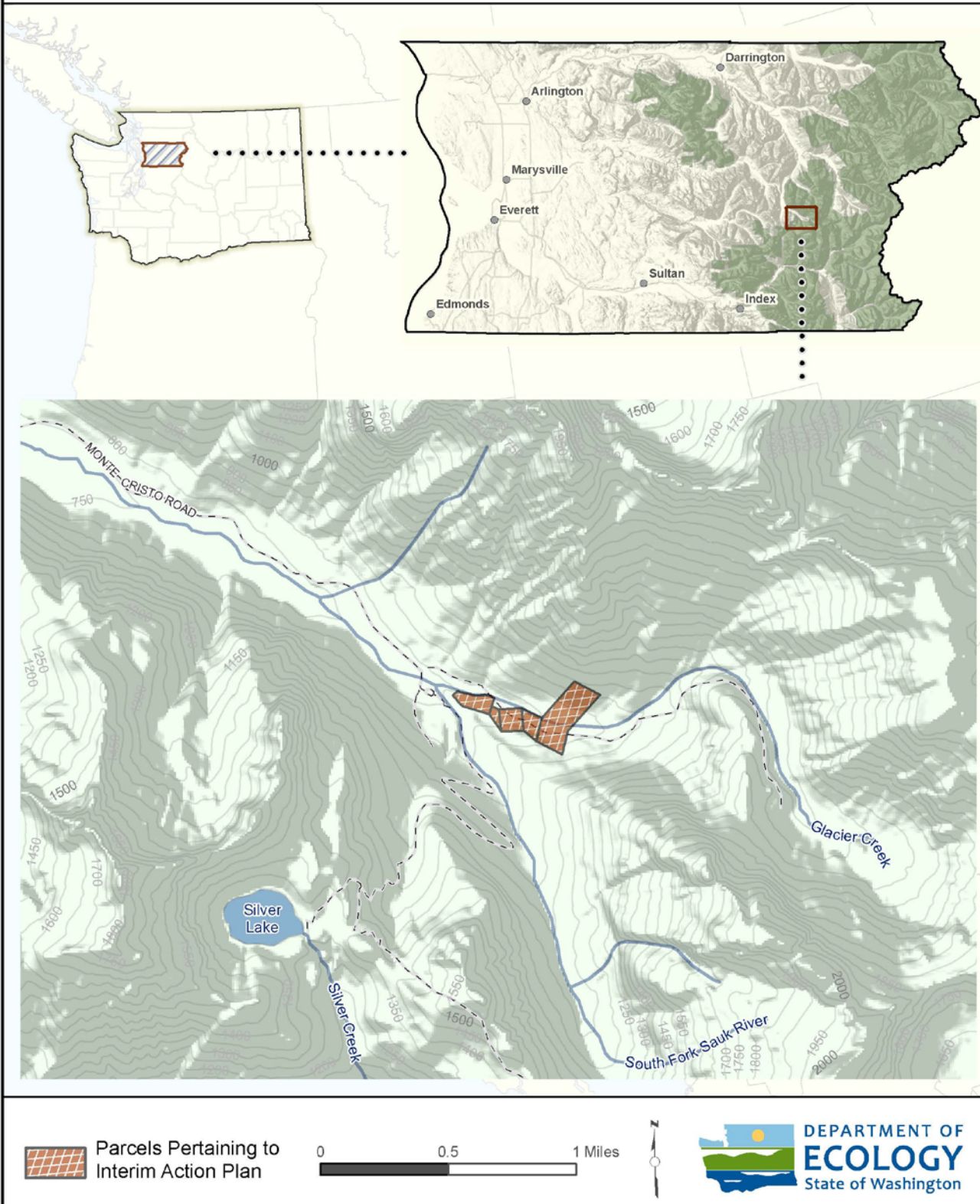
Ecology is proposing this partial cleanup as an effective and efficient joint effort to clean up a portion of the Monte Cristo Mining Area.

Help with other languages and formats?

Para asistencia en español: 509-454-4174
Если вам нужно помощь по русский,
звоните: 509-477-3881

If you need this document in a version for the visually impaired call the Toxics Cleanup Program at 509-454-7841. Persons with hearing loss, call 711 for Washington Relay Service. Persons with a speech disability, call 877-833-6341.

Monte Cristo Mining Area, Snohomish County, WA



For information about other opportunities for public involvement such as meetings, hearings, open houses and workshops, please visit Ecology's Public Involvement Calendar at <http://apps.ecy.wa.gov/pubcalendar/calendar.asp>

While you are at the calendar page, you may click on the link *Frequently Asked Questions about Effective Public Commenting* and learn more about the public comment process.

What can you do?

1. Read about the cleanup in this handout.
2. To get more detailed information, review the supporting documents at the locations listed in this document.
3. Write down your comments and questions. Send them to the Department of Ecology at the address provided in this document. We appreciate your comments and concerns. *Thank you.*

