

### Optimist Park Soil Cleanup

The Washington Department of Ecology is cleaning up soil contamination at Baltimore Park in Tacoma. This is part of Ecology's ongoing work to clean up arsenic and lead. These toxic metals were carried by the wind from the former Asarco copper smelter and contaminated soil over a large area of Puget Sound.

The **Soil Safety Program** provides free soil sampling and cleanup for play areas at schools, childcares, parks, and camps. A \$94.6 million settlement from Asarco funds this work.

### What are the health risks?

Contamination levels at Baltimore **do not pose an immediate health threat**. However, long-term exposure to **arsenic** can contribute to heart disease, diabetes, and certain cancers. **Lead** is especially harmful for young children. It can damage developing nervous systems and lead to behavioral problems.

Take **healthy actions** (see left) to lower your exposure.

### Soil cleanup will likely start in August 2015

Surface soils at Optimist Park have 25 - 79 parts per million (ppm) arsenic. The state cleanup level for arsenic is 20 ppm.

We plan to remove 6 inches of soil from the ball field and small play area (see map on back). We are working with Metro Parks Tacoma to protect the trees in the cleanup area. We will replace contaminated soil with a sports field soil mix, grass seed, and sod.

The cleanup area will reopen in 2016 after grass has grown back. Other areas will reopen this fall after construction is finished.

### What's in the soil in my yard?

To find sampling results for yards near Baltimore Park, visit our online database at <https://fortress.wa.gov/ecy/areispublic/>. If you do not find your results in the database, contact the Tacoma-Pierce County Health Department (see box at right).

### Yard Program

The Yard Program provides free soil sampling and cleanup for residential properties in the Yard Program Area. To see if your yard is located in the Yard Program Area and qualifies for cleanup or soil sampling, go to <https://fortress.wa.gov/ecy/smeltersearch/>. If you have questions or would like to find out more information about the program call (360) 407-7688 and press 2 for Tacoma Smelter Plume.

### Take Healthy Actions



Use these actions to protect your family from contaminated soil:



**WASH YOUR HANDS**  
with soap and water



**TAKE OFF YOUR SHOES**  
at the door



**WASH CHILDREN'S TOYS & PACIFIERS**  
frequently



**CLEAN YOUR PETS**  
before they enter your home

### More Information

#### Questions about the cleanup:

Amy Hargrove, Dept. of Ecology  
(360) 407-6262

[Amy.Hargrove@ecy.wa.gov](mailto:Amy.Hargrove@ecy.wa.gov)

#### Questions about Optimist Park:

Sarah Hamel, Metro Parks  
(253) 305-1056

[SarahH@tacomaparks.com](mailto:SarahH@tacomaparks.com)

#### Health information and soil sampling:

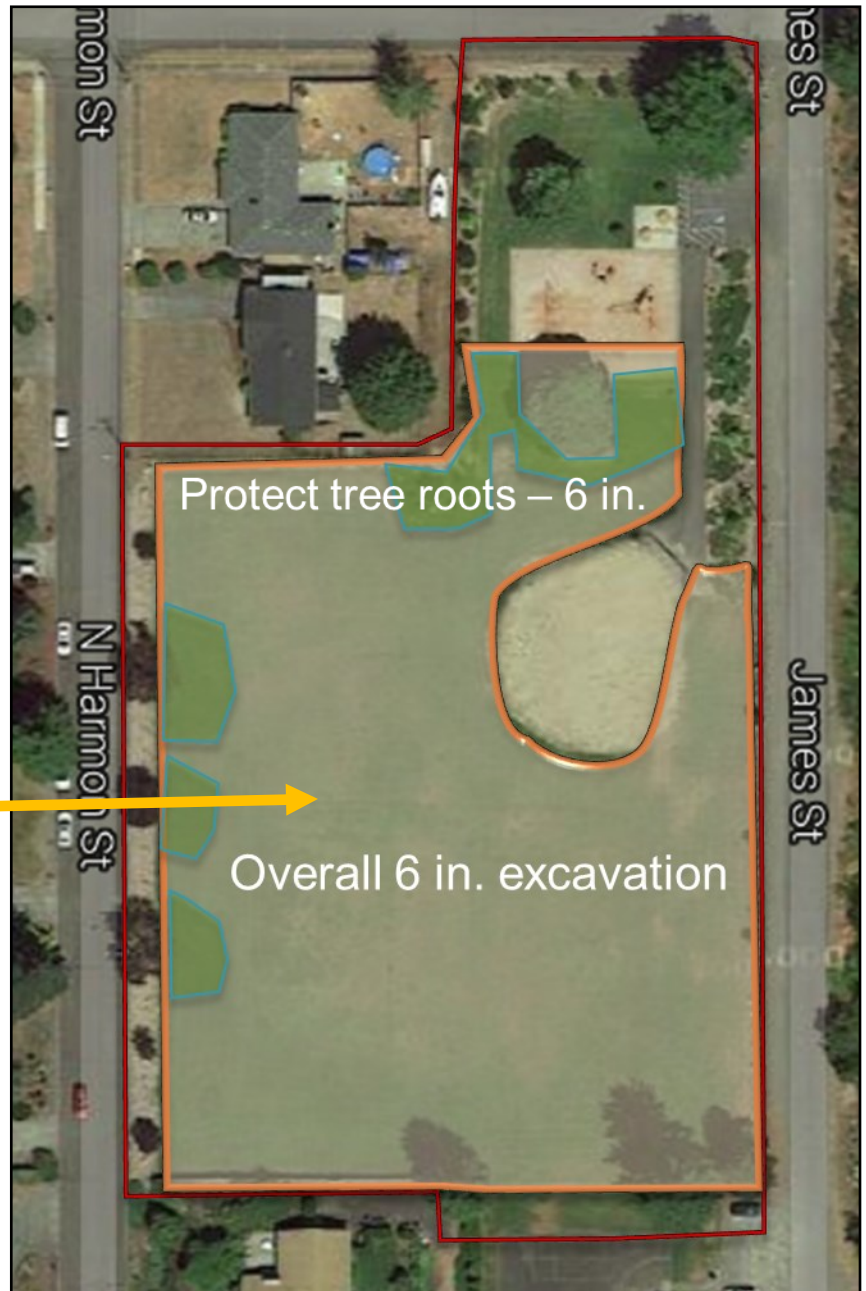
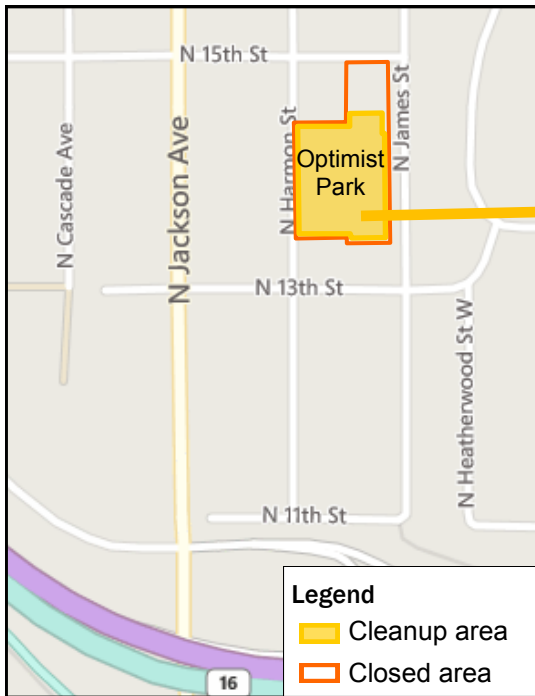
Glenn Rollins, Tacoma-Pierce County Health Dept.

Phone: (253) 798-3503

E-mail: [DirtAlert@tpchd.org](mailto:DirtAlert@tpchd.org)

More information online at:

[www.DirtAlert.info](http://www.DirtAlert.info)



## Please Continue to Enjoy Your Parks

This year we will also clean up soil in a play area at Optimist Park. We previously worked with Tacoma Metro Parks to clean up soil at Kandle, Titlow, Jane Clark, and Vassault parks. Next year we plan to replace soil in a play area at Point Defiance Park.

**¿Habla Español?** Si necesita esta información en español, contáctenos a [preguntas@ecy.wa.gov](mailto:preguntas@ecy.wa.gov).

To request ADA accommodation for disabilities, or printed materials in a format for the visually impaired, call Ecology at (360) 407-6300. Persons with impaired hearing may call Washington Relay Service at 711. Persons with speech disability may call TTY at 877-833-6341.