

## Cleanup Plans Available for Public Comment

The Washington State Department of Ecology (Ecology) invites you to comment on proposed cleanup plans for the Whitney's Chevrolet, Inc. cleanup site. The site is located at 123 W Pioneer Avenue in Montesano.

### Ecology Wants Your Comments!

Ecology will accept comments from **April 30 - June 1, 2015** on these draft documents:

- **Agreed Order**—a legal agreement that requires Whitney's Chevrolet, Inc. (Whitney's) to implement the cleanup action plan.
- **Remedial Investigation**—describes the nature and extent of contamination.
- **Feasibility Study**—evaluates cleanup options.
- **Draft Cleanup Action Plan (CAP)** — describes how the site will be cleaned up and how the cleanup will meet state standards.
- **Public Participation Plan**—describes the tools Ecology will use to inform the public and gather feedback.
- **State Environmental Policy Act (SEPA) review**—describes the potential environmental impact of the cleanup work.

The box to the right shows where you can review documents and how to submit comments.

### Proposed Cleanup Plan

The draft cleanup plan recommends cleaning up the site by:

- **Removing contamination** that is floating in the upper layer of groundwater. It will be pumped out through existing wells and disposed off site.
- **Using air sparging (AS) and soil vapor extraction (SVE).** AS would inject air into the polluted groundwater, turning it into soil vapor. The SVE system then pulls these vapors out of the soil through extraction wells, so they can be treated.
- **Institutional controls.** Whitney's will record an environmental covenant that will prohibit activities that may interfere with the cleanup action, or could result in exposing contamination.
- **Compliance monitoring.** After cleanup, the PLPs will monitor indoor air, groundwater, and soil to make sure the cleanup actions are successful.

### Comments Accepted

**April 30—June 1, 2015**

#### Submit Comments and Questions to:

Marv Coleman, Site Manager  
WA Department of Ecology  
P.O. Box 47775  
Olympia, WA 98504-7775  
Phone: (360) 407-6259  
Marv.Coleman@ecy.wa.gov

#### Public Involvement Questions:

Audrey Kuklok  
Public Involvement Coordinator  
Phone: (360) 407-0067  
Audrey.Kuklok@ecy.wa.gov

### DOCUMENT REVIEW LOCATIONS

#### W.H. Abel Library

125 Main Street South  
Montesano, WA 98563  
(360) 249-4211

#### WA Department of Ecology Southwest Regional Office

300 Desmond Drive SE  
Lacey, WA 98503  
By appointment only:  
Contact Susie Baxter,  
publicdisclosureswro@ecy.wa.gov  
or (360) 407-6365

#### Ecology's Toxics Cleanup Website

<https://fortress.wa.gov/ecy/gsp/Sitepage.aspx?csid=5963>

**Facility Site ID #: 36813164**

## Site Background

In the past, Whitney's stored and sold gasoline on site. Leaking underground storage tanks (USTs) polluted site soil and groundwater. Today, the property is a car dealership.

In 1995, site owners found contamination when they removed three USTs. Ecology found more contamination in 2003 to 2005. In 2007, Ecology signed an agreement with potentially liable persons (PLPs) to investigate and clean up the site. The PLPs responsible for site cleanup are Whitney's Chevrolet, Inc., Caldwell Family Holdings, LLC, and Wynoochee Lodge #42 F & AM.

From 2008 to 2011, Whitney's sampled groundwater, soil, and indoor air both on and off the property. In 2011, they did a partial cleanup by removing six USTs and soil polluted with petroleum related chemicals.

## Site Contamination

Leaking underground storage tanks contaminated soil and groundwater with:

- Petroleum hydrocarbons (gasoline and oil range)
- Benzene, toluene, ethylbenzene, xylenes (BTEX)
- Naphthalenes
- Tetrachloroethene (PCE) in groundwater. The source of PCE contamination at the site is unknown.

There is also gasoline-range petroleum floating on the upper layer of groundwater. Surface water and sediments are not contaminated.

Studies assessed indoor air for potential vapor intrusion (see page 3). The testing showed that a few chemicals found in gasoline are evaporating from the soil and groundwater and entering indoor air in nearby buildings.

The State Department of Health (DOH) did a health consult of the site in 2010. Indoor air testing shows that health threats to building occupants are low. The final cleanup remedy will address vapor intrusion.

## Pilot Study

Prior to developing the draft cleanup plan, the PLPs did a series of pilot tests to evaluate if the recommended cleanup actions would work at this site. They did the pilot study between August and December 2013.

It tested two cleanup methods: air sparging and soil vapor extraction.

The pilot study showed that the groundwater plume is undergoing some cleanup naturally. It also showed that the site soils are conducive to doing soil vapor extraction and air sparging. Together, these two methods remove contaminants faster than using air sparging alone.

The study results support the proposed cleanup methods.

## What Happens Next?

At the end of the comment period, Ecology will respond to comments. We will then finalize the cleanup plans. The PLPs will do the cleanup work described in the plans.

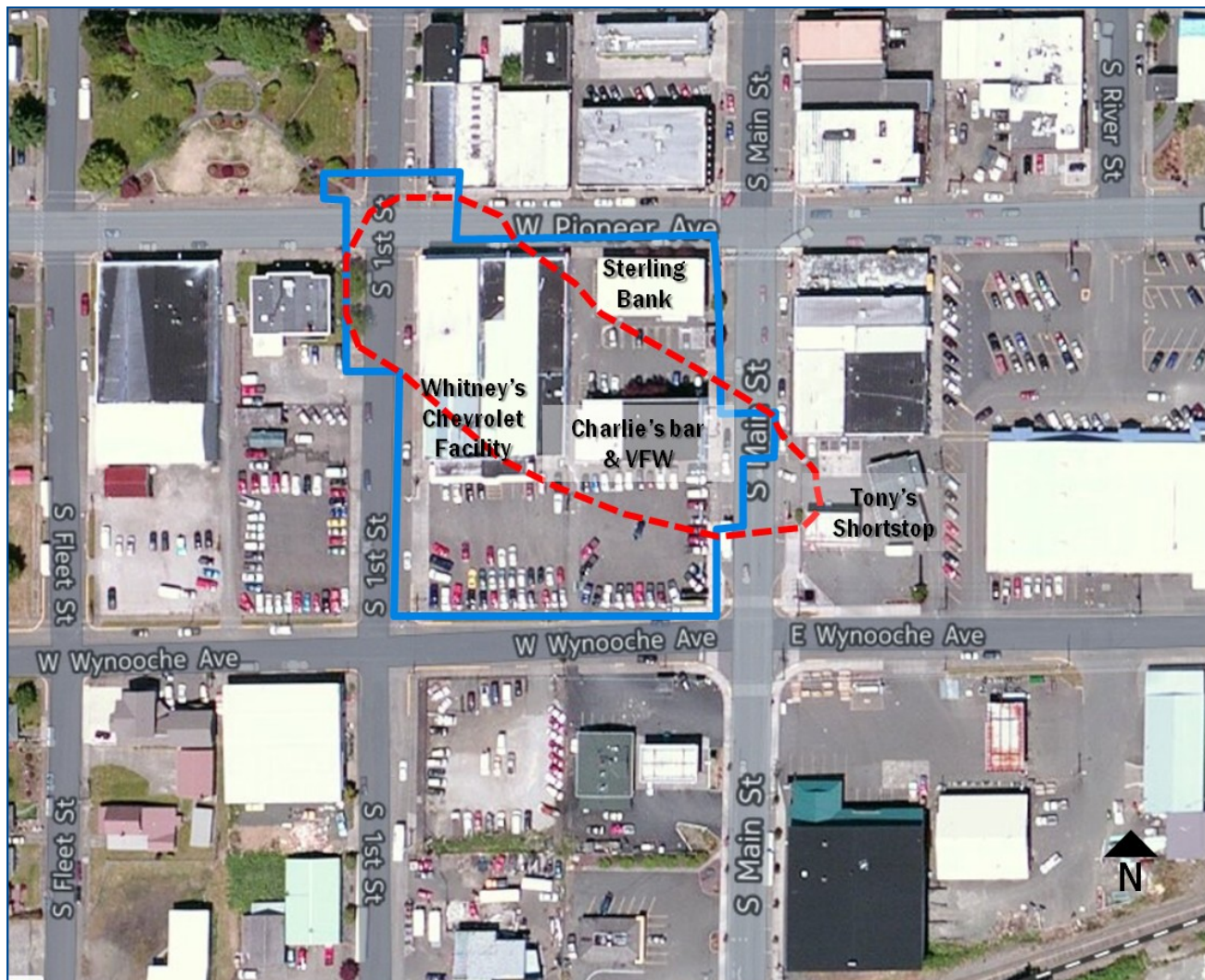
After cleanup, the property owner will record an environmental covenant (EC). An EC will prohibit activities that may result in the release of contaminants remaining on the site after cleanup. The PLPs will monitor groundwater to make sure that the cleanup actions are working.

### Other Montesano Cleanups



- **Downtown Montesano Groundwater Investigation (complete):**  
[http://www.ecy.wa.gov/programs/tcp/sites\\_brochure/montesano/montesano\\_hp.htm](http://www.ecy.wa.gov/programs/tcp/sites_brochure/montesano/montesano_hp.htm)
- **Tony's Short Stop (cleanup started):**  
<https://fortress.wa.gov/ecy/gsp/Sitepage.aspx?csid=6957>
- **Brumfield Twidwell (cleanup complete):**  
<https://fortress.wa.gov/ecy/gsp/Sitepage.aspx?csid=6914>

**Extent of Site**



Approximate boundary of site investigations —————

Approximate site boundary - - - - -

**Key Terms Defined**

**Vapor Intrusion** — Volatile chemicals, such as benzene and other solvents, can evaporate from the soil and groundwater and move into air in buildings. The chemicals can enter buildings through crawlspaces and cracks or other openings in the foundation.

**Groundwater** — Groundwater is water that collects or flows beneath the Earth's surface. It fills the porous spaces in soil, sediment, and rocks. Groundwater mostly comes from rain and from melting snow and ice. Groundwater is one of Washington's most vital natural resources so cleanup is important.



DEPARTMENT OF  
**ECOLOGY**  
State of Washington

PO Box 47775

Olympia, WA 98504-7775

Please recycle.

## **Whitney's Chevrolet, Inc. Montesano, WA**

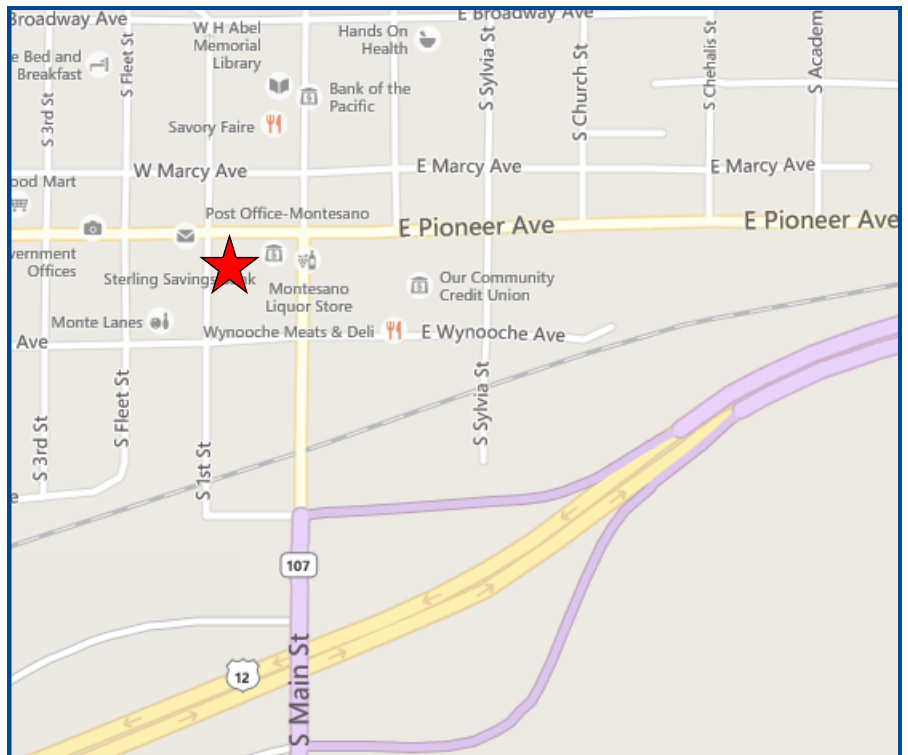
**Ecology seeks public comment on  
cleanup plans**

**Public Comment Period:  
April 30 – June 1, 2015**

**Facility Site ID #: 36813164**

To request ADA accommodation including materials in a format for the visually impaired, call Ecology at (360) 407-6300.

Persons with impaired hearing may call Washington Relay Service at 711. Persons with speech disability may call TTY at 77-833-6341.



The Whitney's Chevrolet cleanup site is located at 123 W Pioneer Ave, in Montesano.