

Everett Smelter Cleanup Project Update

In 2015, the Department of Ecology (Ecology) is continuing cleanup of contaminated soil in north Everett. We have a lot planned for 2015; learn all about it in this fact sheet.

Lowlands Area Remedial Investigation (Page 2)

- ◆ A partial cleanup planned for 2014 did not occur because soil sampling found more contamination than expected under East Marine View Drive.
- ◆ This year we are completing a Supplemental Remedial Investigation and a Feasibility Study.
- ◆ Planning for lowlands cleanup will also begin this year.

Uplands Soil Cleanup and Sampling (Page 3)

- ◆ We are finishing cleanup on 19 residential properties early this year. We will start cleanup on another 20 properties this summer or fall.
- ◆ This year, we will sample soil on about 30-50 properties in the uplands cleanup area.

Park Soil Cleanup (Page 3)

- American Legion Memorial Park cleanup is scheduled for summer and fall 2015. The park will close for cleanup in September.



Contaminated soil being removed on a residential property as part of the uplands cleanup.

For More Information:

Project Hotline
(425) 446-1024

Meg Bommarito, Project Manager
Northwest Regional Office
Phone: (425) 649-7256
Cell: (425) 412-0372
Email: Meg.Bommarito@ecy.wa.gov

Lowlands Area

Sandra Matthews, Lowland Manager
Northwest Regional Office
Phone: (425) 649-7206
Email: Sandra.Matthews@ecy.wa.gov

Uplands Area

Brian McClure, Upland Manager
Northwest Regional Office
Phone: (425) 649-7287
Email: Brian.McClure@ecy.wa.gov

Public Involvement

Marieke Rack, Public Involvement
Coordinator
Northwest Regional Office
Phone: (425) 649-7052
Email: Marieke.Rack@ecy.wa.gov

Washington Department of Ecology Northwest Regional Office

3190 160th Avenue SE
Bellevue, WA 98008
Call for an appointment:
(425) 649-7190

Ecology's Website

http://www.ecy.wa.gov/programs/tcp/sites_brochure/asarco/es_main.html

Facility Site ID #2744

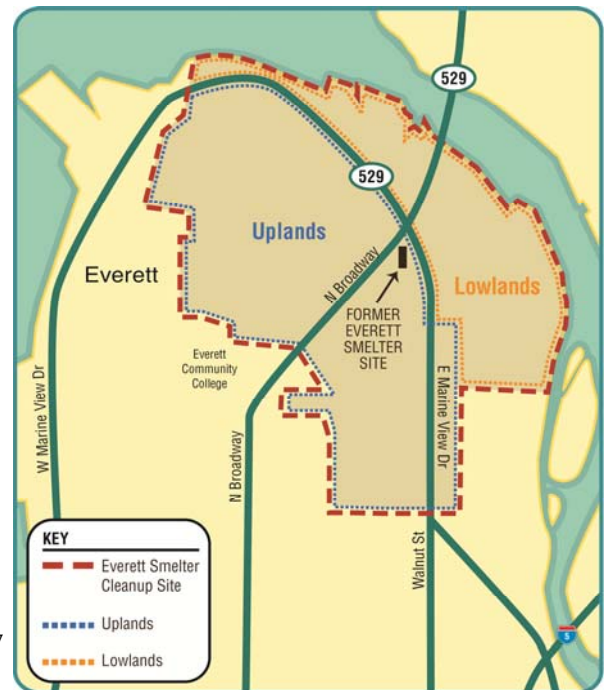
Everett Smelter Cleanup Site

Background

The Everett Smelter, in operation from 1894 to 1912, processed lead, gold, silver, and arsenic. In 1912, the smelter was demolished.

Ecology discovered soil contamination in 1990 and began investigating the area. Ecology found arsenic, lead, cadmium and other metals in soils at the former smelter site. Arsenic and lead above state cleanup levels were also present in an area outside of the former smelter footprint. Ecology, with Asarco and Everett Housing Authority, began cleanup of contaminated soils in the early '90s. Cleanup has continued on and off for several years. In 2009, Ecology received a bankruptcy settlement from Asarco to continue with cleanup.

Information about what we are planning to do in 2015 in the uplands and lowlands areas (see map to the right) is detailed below and on the next page.



Lowlands: Remedial Investigation and Feasibility Study

In the lowlands, Ecology investigations show arsenic contamination above state cleanup levels in shallow and deep groundwater (not a source of drinking water), soil, and surface water. The likely source of the groundwater contamination is contaminated soil and debris below East Marine View Drive.

Last year's sampling showed that the arsenic contaminated soil under East Marine View Drive (near the former smelter site) is more widespread and deeper than estimated. Partial cleanup action plans are on hold as Ecology plans for a more widespread cleanup.

Ecology has a lot of work planned for the lowlands this year, including:

- ◆ Finishing a **Supplemental Remedial Investigation (RI)** report. This report will be available on Ecology's website in February or March. It summarizes all contamination information that has been collected.
- ◆ Conducting a **Feasibility Study (FS)** which will be completed early this summer. The FS will evaluate several cleanup options for the smelter contamination that has been identified in the lowlands.
- ◆ Creating a **Draft Cleanup Action Plan** by the end of 2015. This report will outline the selected clean up action.

A public comment period will be held for the RI, FS, and Draft Cleanup Action Plan in late 2015. The Cleanup Plan will be finalized after the comment period. Cleanup work is tentatively scheduled to begin in 2017.



Ecology staff sampling soil.

Everett Smelter Cleanup Site

Uplands: Residential Soil Cleanup and Sampling

Ecology continues removing arsenic contaminated soil from residential properties. To date, Ecology has removed contaminated soil from 262 properties.

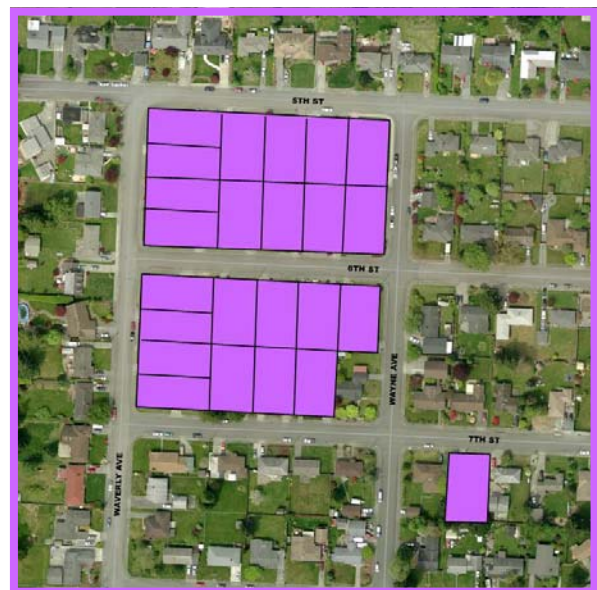
- ◆ **In 2014**, cleanup work was completed on 19 properties north of Broadway along 6th, 7th and, 8th Streets. Work is wrapping up early in 2015. Ecology also sampled soil for contamination on 30 properties.
- ◆ **In 2015**, Ecology will be cleaning up 20 properties on 5th, 6th, and 7th Streets between Winton and Wayne Ave. Work is expected to start in late summer or early fall.

Ecology has been working on residential cleanups for four years and has spent a considerable part of the settlement funding. Remaining funds will support one additional year of cleanup (2015) and more property sampling. Ecology has requested additional funding from the Legislature for the 2015-17 biennium to continue work in the lowlands and uplands beyond 2015.

2014 Residential Cleanup Group



2015 Residential Cleanup Group



Park Cleanup

Ecology found soil arsenic levels above state cleanup levels in the three parks located within the Everett Smelter Cleanup Site boundary: American Legion Memorial Park, Wiggums Hollow Park, and Viola Oursler Overlook

The state legislature gave Ecology funding, separate from funding used for residential cleanup, to clean up all three parks. American Legion Memorial Park cleanup will begin cleanup later this year. Wiggums Hollow Park and Viola Oursler are scheduled for 2016-17.

Cleanup work will begin in phases.

- ◆ The southern portion of American Legion Memorial Park, including the Arboretum, will close in mid **July 2015**.
- ◆ The entire park will close **in early September 2015 after Labor Day**. Cleanup will be completed in early 2016.





DEPARTMENT OF
ECOLOGY

State of Washington

3190 160th Avenue SE

Bellevue, WA 98008

Cleanup Area Soil Safety Recommendations

If you live in the Everett Smelter Cleanup area, take steps to protect your family from contaminated soil.



Wear gloves for yard work.



Leave your dirty shoes at the door.



Keep pets clean.



Wash your hands after playing or working outside.



Damp dust and mop often.



Plant flowers and plants in raised beds.

If you need this publication in an alternative format call reception at 425-649-7000. Persons with hearing loss, call 711 for Washington Relay Service. Persons with a speech disability, call 877-833-6341.

