



Euphilomedes producta Poulsen, 1962

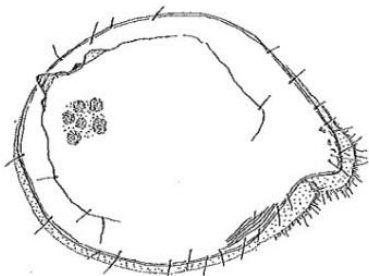


Nomenclature	
Phylum	Arthropoda
Class	Ostracoda
Order	Myodocopida
Family	Philomedidae
Common Synonyms (S) Previous Names (PN)	

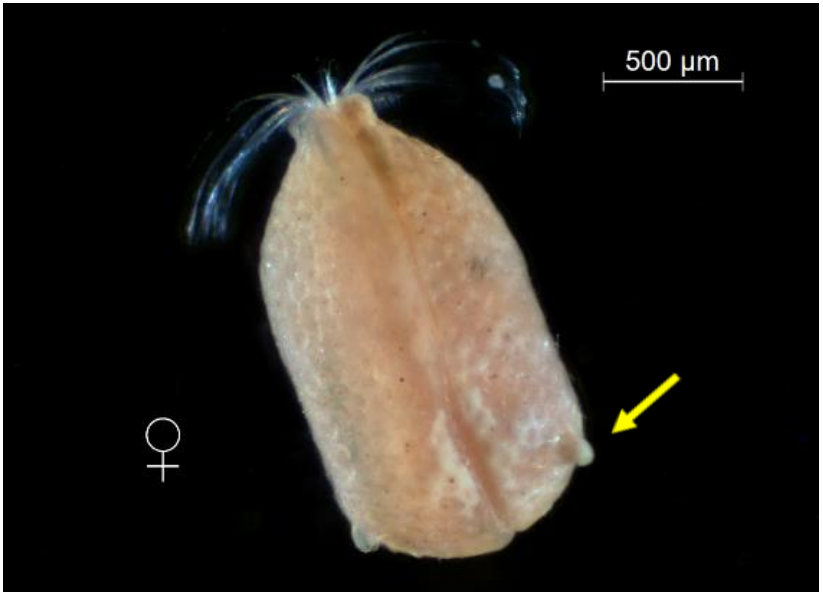
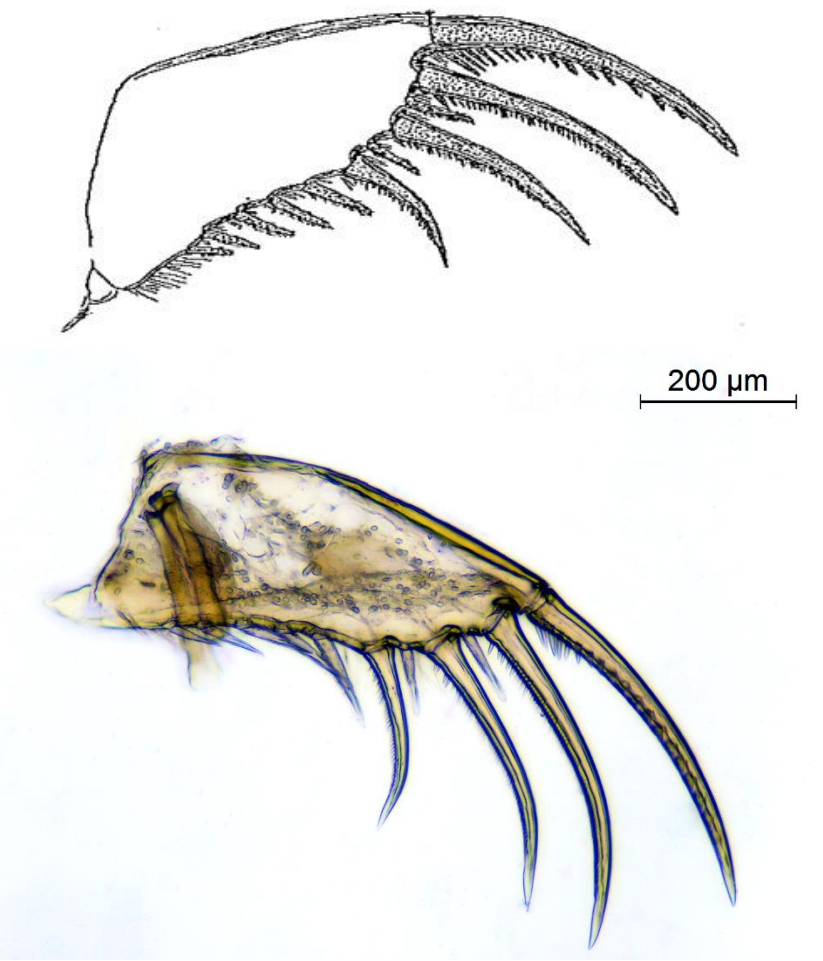


Distribution	
Type Locality	Z.M. Departure Bay, Nanaimo, west coast of Canada, 20 m, 8-6-1915: one female, 1.78 mm.
Geographic Distribution	West coast of Canada; Puget Sound, WA
Habitat	Depth 9-452 m

Description
From Poulsen 1962
<p>Carapace: Female: shell short and high, with a pattern of circular, rather large grooves; rostrum small and somewhat pointed. Incisur shallow. Posterior margin evenly rounded. Surface of shell with a low ridge, produced into a triangular chitinized process dorso-posteriorly. Left valve with 7 bristles medially across rostrum; right valve with 10. Lateral eyes absent. Frontal organ widened distally; proximally of the widened part are 2 sutures across the stem. Male: carapace more elongate than female.</p> <p>Furca: Female: Each lamella with 11 claws; nos. 1, 2, 4, and 6 are main claws. 1st claw with one lateral row of 16 spines and two medial rows of 6-8 and 4 spines; claws 2, 4, and 6 with only a lateral row of slender spines.</p>

Diagnostic Characteristics

Diagnostic Characteristics	Photo, Illustrations	Photo, Illustration Credit
<p>Dorso-posterior chitinized processes present on carapace</p>	  <p><i>Female, left valve (lateral view); specimen from 2014 PSEMP Long-term Station 44 Rep 2</i></p>  <p><i>Male, left valve (lateral view); specimen from 2014 PSEMP Long-term Station 44 Rep 2</i></p>	<p>Poulsen 1962</p> <p>Marine Sediment Monitoring Team</p>

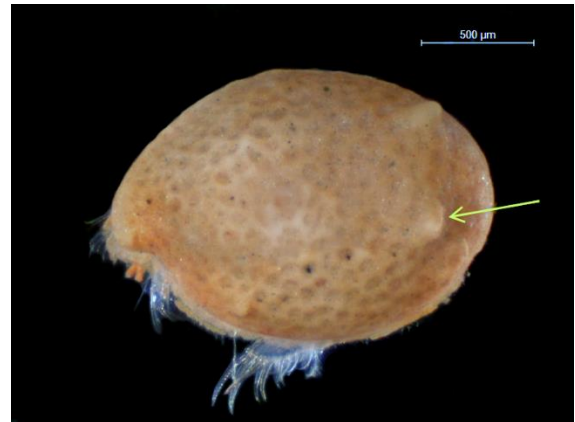
		
<p>Furca with 11 pairs of claws. 1, 2, 4, and 6 are the main claws; 3 and 5 are secondary and placed between main claws</p>		<p>Poulsen 1962</p> <p>Marine Sediment Monitoring Team</p>
<p><i>Female (dorsal view); voucher specimen AR109</i></p> <p><i>Caudal furca, female (lateral view; one half removed for clarity); voucher specimen AR109</i></p>		

Related Species and Characteristic Differences

Species Name	Diagnostic Characteristics
<i>Euphilomedes longiseta</i>	Shell without a dorso-posterior, chitinized process
<i>Euphilomedes carcharodonta</i>	Shell without a dorso-posterior, chitinized process; furca with 10 pairs of claws

Comments

Some Puget Sound specimens have a small posteroventral process in addition to the posterodorsal and anteroventral processes (D. Burgess, personal observation).



Specimen from 2014 PSEMP Long-term Station 21
Rep 1

Literature

Poulsen, E.M. 1962. Ostracoda - Myodocopa, Part I: Cypridiniformes - Cypridinidae. *Dana Report Carlsberg Foundation No. 57*, 1-414. (p. 383-385)

SCAMIT (Southern California Association of Marine Invertebrate Taxonomists). c2009-2016 [cited 2014 Feb 20]. *Euphilomedes producta* Voucher Sheet. Available from: http://scamit.org/taxontools/toolbox-new/ARTHROPODA/Subphylum%20Crustacea/Class%20Ostracoda/Subclass%20Myodocopa/Order%20Myodocopida/Suborder%20Myodocopina/Superfamily%20Sarsielloidea/Family%20Philomedidae/Euphilomedes%20producta/*Euphilomedes%20producta.pdf

More Information

More information about Puget Sound benthic invertebrates is available at:

<http://www.ecy.wa.gov/programs/eap/psamp/index.htm>

Prepared by Dany Burgess (Ecology) and Julianne Ruffner (Ecology); reviewed by Jeff Cordell (UW – Seattle). This document is available on the Department of Ecology's website at <https://fortress.wa.gov/ecy/publications/SummaryPages/1603206.html>

If you need this document in a format for the visually impaired, call (360) 407-6764. Persons with hearing loss can call 711 for Washington Relay Service. Persons with a speech disability can call (877) 833-6341.