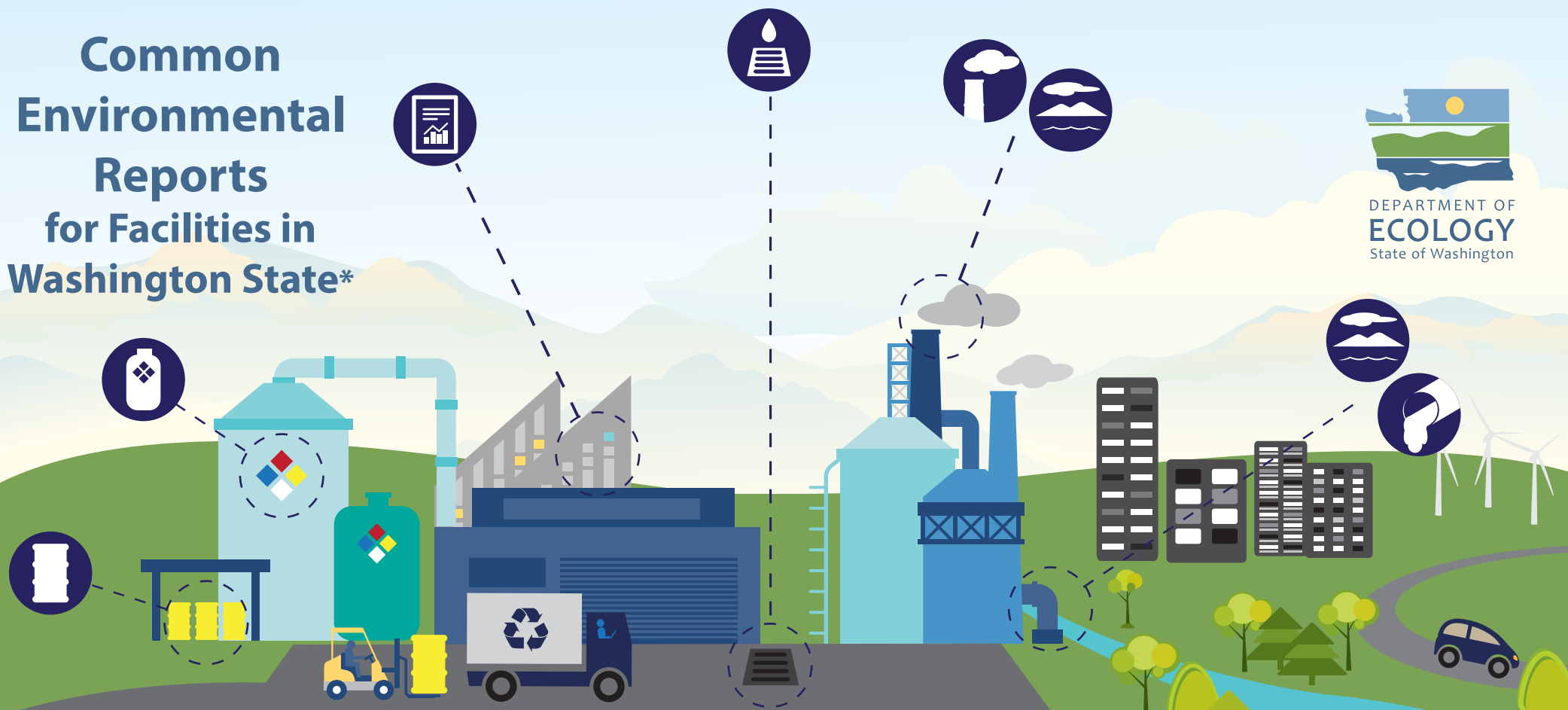


Common Environmental Reports for Facilities in Washington State*



Dangerous Waste Annual Report

Tracks facility's generation and management of dangerous waste to keep people and the environment safe.



Hazardous Chemical Inventory - Tier Two

Informs emergency planning and response agencies of chemicals that may be stored on site and found in an emergency.



Pollution Prevention Plan

Tracks details of toxic chemical use, then considers ways to reduce that chemical use and the waste it generates.



Industrial Stormwater Reports

Tracks:
1) stormwater pollutants discharged to ensure they meet permit limits, and
2) any corrective actions completed.



Air Emissions Reports

Provides a statewide inventory of air pollutant sources and tracks each facility's emissions to make sure they meet air pollutant limits.



Toxics Release Inventory

Informs communities and agencies of: 1) chemical releases to air, land, and water, and 2) chemical shipments to other facilities for recycling or treatment.



Wastewater Discharge Monitoring Reports

Track wastewater volume and the pollutants discharged to make sure they meet water permit limits.

*These are the most common reports. There are other reports for some facilities. Examples include: chemicals manufactured onsite or imported by the facility into the USA - Toxic Substances Control Act (TSCA); water rights and well drilling if the facility has its own water supply; use or sale of pesticides - Federal Insecticide, Fungicide and Rodenticide Act (FIFRA). Ecology Publication Number 16-04-003 February 2016

Which reports must my facility submit?



Varies

Air Emissions Reports

Report if your facility has air emissions and exceeds the threshold levels. Some examples of companies that report are: wood products, metal finishing, aerospace, and fiberglass. Call your local clean air agency to find out what air emissions you need to report.

For more info: www.ecy.wa.gov/programs/air/local.html

Washington Clean Air Act (RCW 70.94)



Due Mar 1

Dangerous Waste Annual Report

Report annually if your facility has an active RCRA Site ID number. The ID number and report are required for facilities that generate and/or manage dangerous wastes AND meet certain criteria.

For more info: www.ecy.wa.gov/programs/hwtr/waste-report

Hazardous Waste Management law (RCW 70.105)



Due Mar 1

Hazardous Chemical Inventory - Tier Two

Report the first time a regulated chemical or product is brought onsite and then report annually if facility stores more than 10,000 pounds of a chemical (or more than 500 pounds of some chemicals).

For more info: www.ecy.wa.gov/epcra

Emergency Planning and Community Right-to Know Act (EPCRA, Section 312)



Due Jul 1

Toxics Release Inventory

Report annually if the facility: 1) has a NAICS code included on the list or is a federal facility; AND 2) has 10 or more employees; AND 3) uses one or more of the 650 regulated chemicals above its threshold amount.

For more info: http://www.ecy.wa.gov/epcra/chemical_summary/who_must_file.html

Emergency Planning and Community Right-to Know Act (EPCRA, Section 313)



Due Sep 1

Pollution Prevention Plan

Report annually if facility generates more than 2,640 pounds of dangerous waste per year OR is required to report under the Toxics Release Inventory.

For more info: www.ecy.wa.gov/programs/hwtr/p2/p3.html

Waste Reduction law (RCW 70.95C)



Varies

Wastewater Discharge Monitoring Report

Report if your facility discharges wastewater to surface water, ground water, or a sewage treatment plant. See your facility's wastewater permit for due dates.

For more info: www.ecy.wa.gov/programs/wq/permits/permitinfo.html

Water Pollution Control (RCW 90.48)



Varies

Industrial Stormwater Reports

Report if the facility is permitted under the Ecology General Stormwater Permit. Quarterly reports track facility stormwater to determine if it meets the water quality benchmarks or limits. Annual reports document any corrective actions taken by the facility to comply with permit requirements.

For more info: Use your search engine for "Ecology Industrial Stormwater" OR

www.ecy.wa.gov/Programs/wq/stormwater/industrial/index.html

Water Pollution Control (RCW 90.48)