

Padilla Bay Newsletter

A Joint Publication of the Padilla Bay Foundation and Padilla Bay National Estuarine Research Reserve

Autumn 2016



Padilla Bay
National Estuarine Research Reserve

Padilla Bay National Estuarine Research Reserve is managed by the Washington State Department of Ecology under the National Estuarine Research Reserve System established by NOAA.

www.padillabay.gov

swood@padillabay.gov

10441 Bay View-Edison Road
Mount Vernon, WA 98273
(360) 428-1558



The Padilla Bay Foundation is a membership-based non-profit organization formed in 1987. Its mission is to help preserve the Padilla Bay estuary in Skagit County, Washington, through support of Padilla Bay National Estuarine Research Reserve.

Padilla Bay Foundation
www.padillabayfoundation.org
PO Box 1305
Mount Vernon, WA 98273
(360) 757-3234
foundation@padillabay.gov

For more news, research updates, program details, see our website at www.padillabay.gov.

To request materials in a format for the visually impaired, call the Reserve at 360-428-1558, Relay Service 711, or TTY 877-833-6341.

Publication No. 16-06-023

Best Wishes to Resource Coordinator, Sharon Riggs

There may not be one task here at the Padilla Bay Reserve that Natural Resource Coordinator, Sharon Riggs hasn't had her hand (or foot) in. After 31 years with the reserve, she'll be retiring this fall and moving to her old stomping grounds in Spokane, and we're not sure how we can possibly manage without her.

Way back when, Sharon was the keeper of the Front Office where the newest technology was an electric typewriter. She scheduled public presentations and wrote the newsletter. She showed films (real films!) on Sundays, supervised volunteers and kept the library tidy. She filled out and filed Washington State carbon copy

forms and was the first person to learn how to use the IBM computer - that big white box with the little blue screen and floppy disk.

Her job evolved—or meandered over the years. She's coordinated exhibit design and production, administered grants, and represented the reserve on local committees. She earned a Masters of Science at Western Washington University and started spending more time outdoors on habitat monitoring and resource management. She's surveyed salt marshes, mentored students and written management plans. There's no one better at spotting and digging invasive *Spartina* (cordgrass). She's a pro at presentations - from the ecology of eelgrass to the history of diking. She trains the staff on safety procedures, rolls creosote logs out of the mudflat, and navigates the federal grant application process. She can tell you how many species of amphipods have been documented in the bay,



when the swallows arrive, and how to monitor the European green crab that hasn't arrived yet. And she feeds us apples and tomatoes from her bountiful garden!



Thanks, Sharon, for years of back-breaking work, your dedication to preserving this place we all love, and your willingness to take on every task passed your way. Best wishes for your next chapter.



How You Can Help

Grassroots involvement is the core of Padilla Bay Foundation’s commitment to protecting our estuaries and supporting the Padilla Bay National Estuarine Research Reserve. Members of the Padilla Bay Foundation contribute directly to environmental education and research at Washington State’s only Estuarine Research Reserve.

Memberships can be for multiple years. Please consider payment of 2 or 3 years at a time, as this will save the Foundation considerable labor and mailing costs and insure that your dues work harder supporting the programs you care about.

Categories of membership are:

| | |
|---------------------|--------|
| Senior/Student | \$25 |
| Individual | \$35 |
| Family | \$50 |
| School/Organization | \$50+ |
| Supporting | \$75 |
| Sustaining | \$100+ |
| Small Business | \$100+ |
| Sponsor | \$250 |
| Patron | \$500 |
| Steward | \$1000 |

Send your contribution to:
 Padilla Bay Foundation
 PO Box 1305
 Mount Vernon, WA 98273
 (360) 757-3234
 a 501(c)(3) organization

Visit our blog at www.padillabayfoundation.org.

Annual Meeting and Dinner

Save this date! The foundation will hold our Annual Meeting and Dinner on Saturday, October 1 from 3:30 to 7:00. An invitation will be forthcoming.

Imagine a Touch Tank

Thanks to generous donors and the “Taste of Padilla Bay” fundraiser last August, we are moving ahead with exciting plans for a touch tank in the aquarium room. Consultants will be visiting the reserve soon to develop a conceptual design. Stay tuned!

Endowment Fund

Did you know the Padilla Bay Foundation has an endowment fund? To learn more about how your gift can last far into the future, check the Skagit Community Foundation’s website at www.skagitcf.org.

Foundation Board Members

President: Paul Dinnel
 Vice-president: Rebecca Spurling
 Secretary: Kara Kuhlman
 Treasurer: Deb Canon

Glenda Alm
 Andrew Entrikin
 Ed Gastellm
 Mary Heath
 Tim Manns
 Carl Molesworth
 Gail Smith
 Connie Walser
 Chet Yeo

Kay Reinhardt - Administrator
 Terry Stevens - Advisory Member

| | |
|--|--|
| Name _____ Address _____ City/State/Zip _____ E-mail address _____ | Membership Category _____ (see reverse) Membership Amount \$ _____ Extra Donation \$ _____ <input type="checkbox"/> Check enclosed <input type="checkbox"/> Charge my card (VISA/Mastercard) |
| mail to: Padilla Bay Foundation P. O. Box 1305 Mount Vernon, WA 98273 | Card # _____ Expiration Date _____ Signature _____ |

Autumn 2016 Events

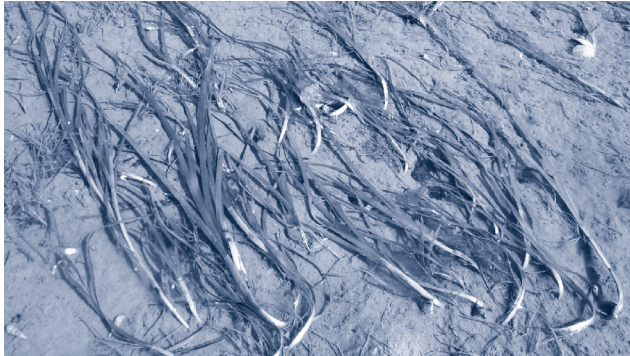
New and Improved Website Coming

Padilla Bay and Department of Ecology staff are working hard to bring you a brand-spanking-new website. We are expecting online registration to be ready for our fall programs, so give it a try and let us know what you think.

www.padillabay.gov

Fidalgo Bay Day

Don't miss this fun-filled celebration with activities for the whole family. Beach seine, canoe rides, fish prints, sea creature touch tank, salmon BBQ and much more. **August 27, 11:00AM-3:00PM** at the Fidalgo Bay RV Resort. Check the Skagit Marine Resource Committee website for info. <http://www.skagitmrc.org>



Eelgrass Wasting Disease in the San Juans

Eelgrass wasting disease is caused by a marine slime mold and shows up as dark patches or lesions on eelgrass blades. This disease devastated Atlantic eelgrass beds in the 1930s and is currently common in the San Juan Islands. Researchers have found that older, denser eelgrass beds may be more susceptible to the disease, and warming water may increase its prevalence. Join Morgan Eisenlord, Cornell University and Friday Harbor Labs to learn more about this potentially damaging disease and the patterns and trends researchers are seeing in our local waters.

Saturday, September 3, 1:00-2:30PM. Please register online or call the Interpretive Center.

Surprises of the Fall Migration

Join naturalist, Libby Mills, as we see what's going on in the southbound bird migration. Wear comfortable walking shoes and be prepared to explore Padilla Bay's uplands and the "west 90" of the Samish Flats. Bring water and a snack. Binoculars and field guides are available at the Interpretive Center. Meet in the Padilla Bay parking lot.

Friday, September 9 and Sunday, September 11, 8:30AM-12:30PM. Please register online or call the Interpretive Center.

Wild Edible and Medicinal Plants

Fall is harvest time, in our gardens, fields and forests. Join naturalists Marlee Osterbauer and Terri Wilde in a search for wild edible and medicinal plants. They will share extensive knowledge of plant uses and folklore. Dress for chilly weather. A notebook and pencil are useful. This 2 hour class is offered twice. **Saturday, October 1 and Sunday October 2, 2:00-4:00PM.** Please register online or call the Interpretive Center.



Aquarium Tour and Fish Feeding

Come and find out what's new and exciting in our aquariums. Join aquarist, Mark Olson for a behind-the-tanks view of the system, and a close-up look at the amazing critters in the tanks. **Saturday, October 29, 11:00AM.** No need to register. Join us in the aquarium room at 11:00AM.

Washington Coast Marine Spatial Planning

Washington waters are busy with various activities, such as shipping, aquaculture, fishing, recreation and cultural uses. Some of these uses conflict now, and the conflicts may deepen as new ocean uses are considered. Come learn about the state's marine spatial planning process that brings coastal residents, businesses, tribes, scientists and government agencies together to create a plan to guide development in Washington's marine space. Bridget Trosin, Washington Sea Grant, leads outreach efforts and coordinates the sci-ence advisory panel for this coastal planning process. She will provide an overview of the State's goals, research, and coordination efforts that have occurred over the past 5 years. A draft plan is expected to be completed by December 2016. **Saturday, November 5, 1:00-2:00** Please register online or call the Interpretive Center.

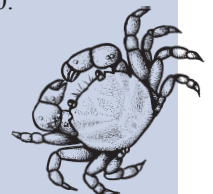
The Breazeale Interpretive Center is open to the public
Wednesday-Sunday, 10:00-5:00.

Staff are available 7 days a week.

Register online or by phone.

(360) 428-1558

www.padillabay.gov





Padilla Bay National Estuarine Research Reserve
Breazeale Interpretive Center
10441 Bay View-Edison Road
Mount Vernon, WA 98273

PRSR STD
US POSTAGE PAID
WA STATE DEPT
OF PRINTING 98501



Padilla Bay

Monthly Youth Programs Offer Fun Learning

Mini Explorers are the 3-5 year old learners. We look at a new topic each month, with stories, games, hands-on observations, art projects, and plenty of action. Call the Interpretive Center to register.

September 21 & 22, 10:00AM & 1:00PM

How Animals Move—Swimming, flying, crawling squirming—only a few estuary animals walk on two legs like you!

October 19 & 20, 10:00AM & 1:00PM

Cider Pressing—Turn the crank and enjoy a fall day in the Breazeale family orchard. Don't forget warm clothes!

November 9 & 10, 10:00AM & 1:00PM

Salmon – Here is an amazing fish with an incredible life story. Come hear the river-to-sea adventure of the Salish Sea's most famous fish.

Junior Ecologists are 6-9 year olds who have fun exploring the estuary. Excursions to the beach, science experiments, games, art projects –this program is guaranteed fun! Call the Interpretive Center to register.

September 23 & 24, 10:30AM-12:00 Noon

Camouflage: How to Hide in the Tide—Don't wear bright pink to this program. We'll find out how camouflage works and who uses it in Padilla Bay.

October 21 & 22, 10:30AM-12:00 Noon

Cider Pressing—Spend a fall morning in the orchard, and learn about the Breazeale farm. (Wear a warm jacket.)

November 18 & 19, 10:30AM-12:00 Noon

Terrific Tides—When the tide goes out in Padilla Bay, it goes all the way out. Find out why, and enjoy some fun games and activities about this important force in the bay.

