

Everett Smelter Lowlands Cleanup Site



Submit comments to:

Sandra Matthews - Site Manager
WA Department of Ecology
Toxics Cleanup Program
3190 160th Avenue SE
Bellevue, WA 98008-5452
Phone: 425-649-7206
E-mail: smat461@ecy.wa.gov

Document review locations:

Everett Public Library
2702 Hoyt Avenue
Everett, WA 98201
Phone: 425-257-8010

Ecology-Bellevue Office
3190 160th Ave. SE
Bellevue, WA
By appointment; call 425-649-7190

Ecology's Everett Smelter- Lowlands webpage:

[www.ecy.wa.gov/programs/tcp/
sites](http://www.ecy.wa.gov/programs/tcp/sites)

Search Site Name: Everett Smelter

Cleanup Site ID: 4298
Facility Site ID: 2744

Special accommodations

If you need this publication
in an alternative format, call Brad
Petrovich at Ecology, 425-649-4486.

Persons with hearing loss, call 711 for
Washington Relay Service.

Persons with a speech disability, call
877-833-6341.

Questions?

Call us at: 425-446-1024

Cleanup plans ready for public review

The Department of Ecology (Ecology) is making draft cleanup plans for the Everett Smelter Cleanup Site available for public review and comment. The draft plans address the Lowlands Area of the site, and include several documents:

- **Draft Cleanup Action Plan (DCAP):** describes preferred cleanup methods for contamination, and specifies cleanup standards and requirements at the site.
- **State Environmental Policy Act (SEPA) Checklist and Determination of Non-significance:** describes potential environmental impact of the cleanup work.
- **Public Participation Plan (PPP):** outlines how the public can continue to be involved in this cleanup process.

You can review and comment on these documents from August 22 – September 20, 2016. They can be found at the locations listed to the left.

Background

The Everett Smelter operated from 1894 to 1912, when the smelter was demolished. Ecology discovered soil contamination in 1990 and began investigating the area. Since 2009, Ecology has used settlement money to study contamination in the industrial area of North Everett along the Snohomish River.

The Everett Smelter cleanup site is divided into two parts:

- The Uplands Area (located south and west of East Marine View Drive) includes residential and parks cleanup. Ecology has completed cleanup work on over 300 residential homes and at American Legion Memorial Park.
- The Lowlands Area (located along the Snohomish River north and east of East Marine View Drive) is mostly industrial. In February 2016, Ecology finalized a Remedial Investigation/Feasibility Study (RI/FS) report that described the contamination in this area, and identified alternatives for cleaning it up. The findings and cleanup alternatives in that report were used to develop the draft Cleanup Action Plan.

Public Comment Notice

Contamination within the Lowlands

Ecology found that arsenic, lead and mercury are the main contaminants in the Lowlands. These contaminants exist in soil, shallow and deep groundwater, and in limited areas of the sediment below outfalls along the shoreline. Contamination exceeds limits allowed by the state's cleanup laws, the Model Toxics Control Act (MTCA) and the Sediment Cleanup Standards (SMS). Therefore they must be addressed.

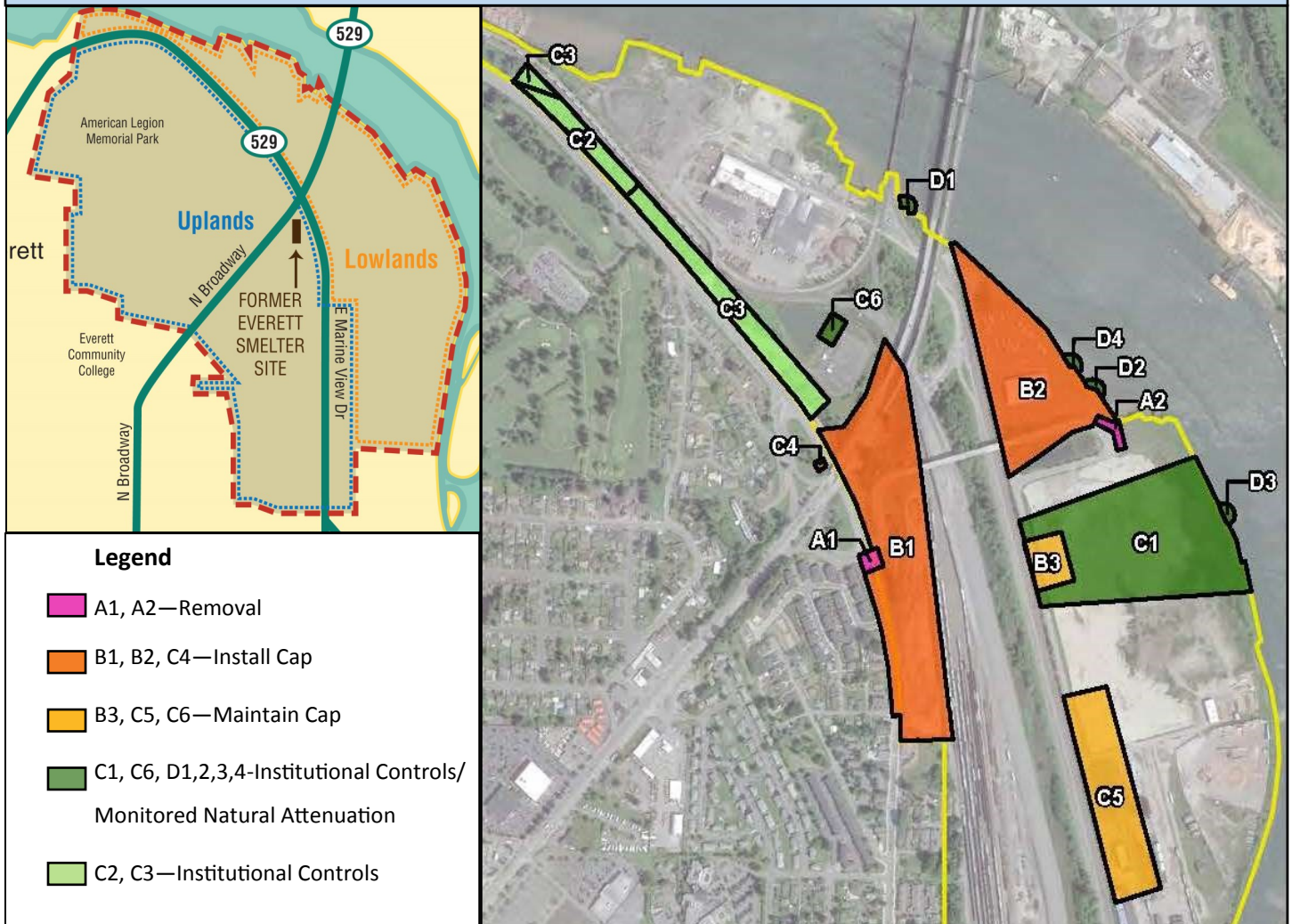
More contaminant information is available at <http://www.atsdr.cdc.gov/toxfaqs/index.asp>

Draft Cleanup Action Plan (DCAP)

The DCAP addresses 15 areas in the Lowlands with contamination caused by the Everett Smelter. These areas and the contamination in them are different, and require different cleanup treatments. Ecology plans to use removal and capping of contamination, reactive barriers technology, and natural attenuation in the cleanup. Ecology prioritizes removal of contamination sources and plans to phase the work as funding allows. All of these treatments will be monitored after cleanup to ensure they are working.

State Environmental Checklist and Determination

A SEPA checklist and determination of non-significance are available for review. Ecology determined that the cleanup work will not have a significant adverse environmental impact. Potential impacts from construction activities such as truck traffic and noise are being addressed.



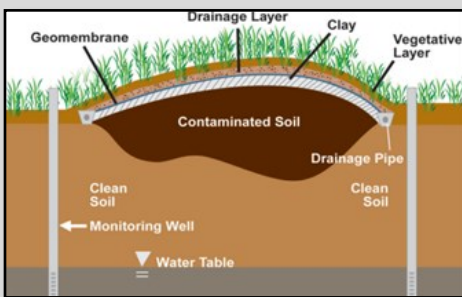
Selected Cleanup Technologies

Removal

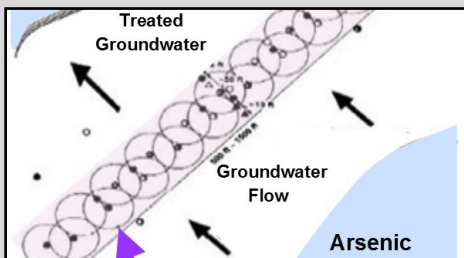


In areas A1 and A2, the plan is to remove contaminated material from the site and transport it to a treatment or disposal facility.

Capping and Permeable Reactive Barrier



In areas B1, B2 and C4 the plan is to install a cap of a natural or synthetic material over contaminated soil. The cap prevents surface water from spreading contaminated soil, limits infiltration, and reduces the potential for human exposure. The caps will be new in areas B1, B2, and C4. Already existing caps will be maintained in areas B3, C5, and C6.



Along the shoreline edge of B2 (not shown on map), the plan is to install a permeable reactive barrier. This barrier is created by injecting chemicals into the ground. The chemicals form a “wall of treatment” that react with arsenic as it passes through the treatment area. Arsenic is then drawn out of groundwater and into soil where it stays in place.

Institutional controls



In areas C2 and C3, the plan is to use institutional controls such as fences, permit requirements, and zoning regulations, to minimize the potential for human exposure to contamination. These controls do not physically change the site or reduce contamination levels.

In area C5, the plan is to decommission the drainage and pipe systems that act as a preferential path for contamination.

Monitored Natural Attenuation

In areas C1, C6, D1, D2, D3, and D4 the plan is to monitor the water quality of surface water and groundwater to confirm that natural processes are reducing the contamination.

Post-treatment Monitoring

Cleanup treatments in the Lowlands will be monitored after they are installed to ensure they are working.

3190 160th Avenue SE
Bellevue, WA 98008-5452

Draft cleanup plans for Everett Smelter site ready for review

El Departamento de Ecología (Ecología) ha completado recientemente borradores para los Planes para la Limpieza de propiedades privadas dentro del Sitio de Limpieza de Tierras Bajas de la Fundidora Everett. Los documentos relacionados con estos planes ya están disponibles para la revisión pública. Ecología invita al público a someter sus comentarios por escrito del 22 de agosto al 20 de septiembre del 2016. Para obtener una copia de información acerca de los antecedentes del Sitio en español por favor comunicarse con Sandra Matthews al (425) 649-7206 o por e-mail a smat461@ecy.wa.gov.

Отдел Экологии закончил разработку предварительного плана зачистки низинной части территории металлургического комбината г. Эверетт. Эти документы теперь доступны для общественности. Вы можете ознакомиться с ними и послать нам Ваши комментарии в период с 22-го августа до 20-го сентября 2016 года. Вы можете получить эту информацию на русском языке у Sandra Matthews, (425) 649-7206, smat461@ecy.wa.gov.

Bộ Môi Sinh gần đây đã hoàn thành bản dự thảo kế hoạch làm sạch vùng đất thấp tại nhà máy luyện kim Everett. Các tài liệu liên quan đến những kế hoạch hiện nay có sẵn cho công chúng xem xét. Bộ Môi Sinh mời gọi công chúng góp ý kiến về bản kế hoạch bằng cách gửi văn bản bắt đầu từ ngày 22 tháng 8 đến ngày 20 tháng 9 năm 2016. Để có một bản sao của thông tin này bằng tiếng Việt, xin vui lòng liên lạc Bà Sandra Matthews số (425) 649-7206, hoặc qua điện thư smat461@ecy.wa.gov.

Public comments requested

Ecology has released a draft Cleanup Action Plan for the Everett Smelter Lowlands Cleanup Site, and is conducting a public comment period for draft cleanup plans.

Documents for review include the draft cleanup plans, a State Environmental Policy Act (SEPA) Determination of Non-Significance, and an updated public participation plan.

You are invited to review the documents (see page 1 for details on documents and how to comment), and send comments to Ecology.

**Comments accepted:
August 22—September 20, 2016**