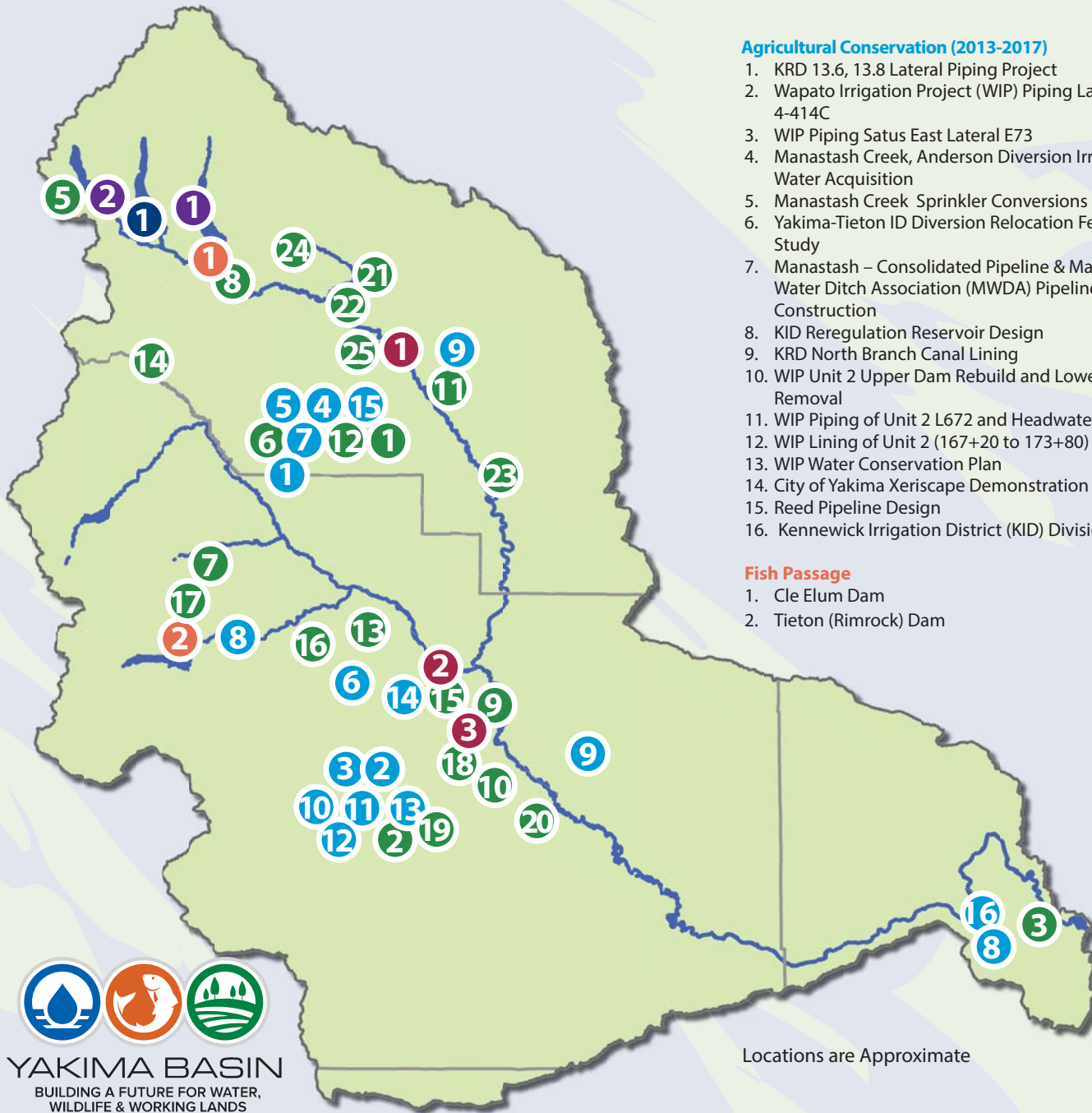


Yakima Basin Integrated Plan Initial Development Projects



Agricultural Conservation (2013-2017)

1. KR D 13.6, 13.8 Lateral Piping Project
2. Wapato Irrigation Project (WIP) Piping Lateral 4-414C
3. WIP Piping Satus East Lateral E73
4. Manastash Creek, Anderson Diversion Irrigation Water Acquisition
5. Manastash Creek Sprinkler Conversions
6. Yakima-Tieton ID Diversion Relocation Feasibility Study
7. Manastash – Consolidated Pipeline & Manastash Water Ditch Association (MWDA) Pipeline Construction
8. KID Reregulation Reservoir Design
9. KR D North Branch Canal Lining
10. WIP Unit 2 Upper Dam Rebuild and Lower Dam Removal
11. WIP Piping of Unit 2 L672 and Headwaters Rebuild
12. WIP Lining of Unit 2 (167+20 to 173+80)
13. WIP Water Conservation Plan
14. City of Yakima Xeriscape Demonstration Project
15. Reed Pipeline Design
16. Kennewick Irrigation District (KID) Division IV Lining

Fish Passage

1. Cle Elum Dam
2. Tieton (Rimrock) Dam

Groundwater Storage

1. Upper Kittitas Shallow Aquifer Recharge
2. Yakima City Aquifer Storage and Recovery
3. Toppinish Fan Aquifer Recharge

Structural and Operational Changes

1. Cle Elum Pool Raise
2. Keechelus to Kachess Conveyance

Surface Water Storage

1. Kachess Drought Relief Pumping Plant

Water Bank/Exchange Programs

Basin Wide

Habitat Enhancement (2013-2017)

1. Manastash Creek Conservation and Tributary Enhancement Project
2. Toppenish Creek Habitat Restoration
3. Bateman Island Causeway Modification Conceptual Design/Outreach/Permitting
4. Bull Trout Habitat Improvements
5. Gold Creek Habitat Assessment and Conceptual Design
6. Reed Diversion design Barrier Removal
7. Little Rattlesnake Road Decommissioning
8. Cle Elum River Side Channel Restoration Project, Phase 2
9. Gap-to-Gap Property Acquisitions
10. Upper Wapato Riparian Restoration
11. Ellensburg Water Company / Coleman Creek Restoration
12. Reed Diversion Barrier Removal
13. Trout Meadows Acquisition / Enhancement
14. Manastash/ Little Naches Land Acquisition
15. Gap-to-Gap Outfall Relocation, Land Acquisition and Levee Removal design and Restoration
16. Cowiche Easement/Design
17. South Fork Tieton Bull Trout Passage Feasibility and Design
18. Yakima Rivermile 89.5 Levee Breach
19. Island Road Floodplain Reconnection - Toppenish Creek
20. Toppenish Creek - 3-way Levee Setback
21. Teanaway/Indian Creek Restoration
22. Teanaway Habitat Restoration
23. Upper Yakima Floodplain Acquisition and Design Ringer Loop Road
24. Teanaway Acquisition
25. KR D Tributary Supplementation

Locations are Approximate



YAKIMA BASIN
BUILDING A FUTURE FOR WATER,
WILDLIFE & WORKING LANDS