

Stream surveys in the Northeast Washington region during 2018

The Watershed Health Monitoring program samples streams and rivers across the state to obtain a consistent, objective picture of habitat and biological conditions and to track trends. This program is designed to answer questions about the overall health of watersheds.

The Department of Ecology (Ecology) scientists gather information by (1) monitoring the chemical, physical, and biological integrity of Washington's streams and rivers through time and (2) analyzing the environmental conditions that affect the continued success of protected species.

Surveys cover biology, chemistry, and habitat

During monitoring, we sample fish, amphibians, macroinvertebrates, and algae. The status of these biological communities gives us insight into the health of the watershed. We also gather chemical and physical habitat data to help us understand factors affecting overall watershed health.

Randomized sampling builds watershed-wide view

To evaluate watershed status and trends, we use a statistical survey design to accurately portray large regions. Instead of conducting a census of every stream, we randomly choose sample sites that represent the larger stream network.

Project returns to Northeast Washington region in 2018

Ecology scientists sample eight regions across the state on a rotating basis. In 2018, we will collect samples at 50 streams and rivers in the Northeast Washington region between July 1 and October 15. We first sampled this region in 2012, and we will return to half of those sites in 2018.

The map on the back of this page shows the different regions where we previously sampled. These sampling sites are marked with black dots.

Ecology scientists respect private property

Ecology staff will always ask landowners for permission to access streams on their property. Our employees will not enter private lands unless landowners grant permission.

Why does it matter?

Salmon, trout, and other water-dwelling species need healthy watersheds.

Standardized, representative watershed health data lets us share information about habitats and work to ensure their protection.

Related websites

State of Salmon in Watersheds biennial report.
<http://stateofsalmon.wa.gov/>

Comprehensive Monitoring Strategy for Watershed Health and Salmon Recovery
www.rco.wa.gov/documents/monitoring/Executive_Report_final.pdf

(Also see bottom of page 2)

Ecology contact

Glenn Merritt
360-407-6777
glenn.merritt@ecy.wa.gov

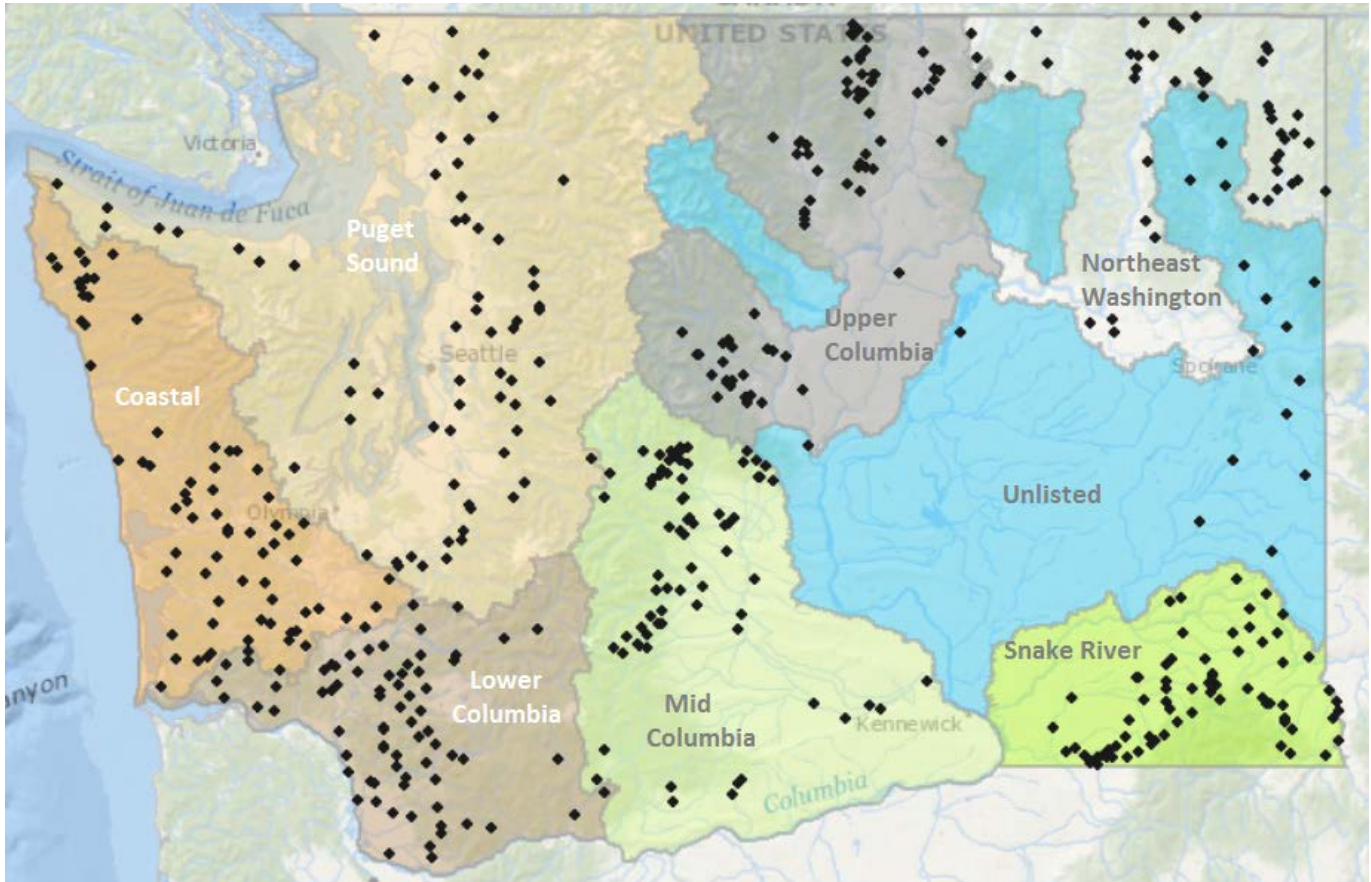
Special accommodations

If you need this document in a version for the visually impaired, call 360-407-6764.

People with hearing loss, call 711 for Washington Relay Service.

People with a speech disability, call 877-833-6341.

Map of Status and Trends Regions for the Watershed Health Monitoring program



Dots signify locations of previous randomized field sampling (2009-2017) under the Watershed Health Monitoring program. The Northeast Washington region will be sampled for a second time in 2018.

Water Resource Inventory Areas (WRIAs) for the Northeast region are 53, 54, 58, 60, 61, and 62.

Watershed Health Monitoring, since 2009

The Watershed Health Monitoring program was established in 2009 to meet goals proposed by the state's *Comprehensive Monitoring Strategy for Watershed Health and Salmon Recovery*. The Watershed Health Monitoring Program was designed with direction from Washington's Monitoring Forum, a multi-agency group responsible for coordinating actions related to monitoring watershed health and salmon recovery.

For more information

Watershed Health Monitoring: <https://www.ecy.wa.gov/Research-Data/Monitoring-assessment/River-stream-monitoring/Habitat-monitoring/Watershed-health>

Data and results: <https://fortress.wa.gov/ecy/eimreporting/Stream/STREAMSearch.aspx>

This focus sheet: <https://fortress.wa.gov/ecy/publications/SummaryPages/1703030.html>