

# Padilla Bay Newsletter

A Joint Publication of the Padilla Bay Foundation and Padilla Bay National Estuarine Research Reserve

Summer 2017



**Padilla Bay**

National Estuarine Research Reserve

Padilla Bay National Estuarine Research Reserve is managed by the Washington State Department of Ecology under the National Estuarine Research Reserve System established by NOAA.

[www.padillabay.gov](http://www.padillabay.gov)

[swood@padillabay.gov](mailto:swood@padillabay.gov)

10441 Bay View-Edison Road  
Mount Vernon, WA 98273  
(360) 428-1558



The Padilla Bay Foundation is a membership-based non-profit organization formed in 1987. Its mission is to help preserve the Padilla Bay estuary in Skagit County, Washington, through support of Padilla Bay National Estuarine Research Reserve.

Padilla Bay Foundation  
[www.padillabayfoundation.org](http://www.padillabayfoundation.org)  
PO Box 1305  
Mount Vernon, WA 98273  
(360) 757-3234  
[foundation@padillabay.gov](mailto:foundation@padillabay.gov)

For more news, research updates, program details, see our website at [www.padillabay.gov](http://www.padillabay.gov).

To request materials in a format for the visually impaired, call the Reserve at 360-428-1558, Relay Service 711, or TTY 877-833-6341.

Publication No 17-06-011

## Marine Debris Exhibit Coming Soon

If you visit the Breazeale Interpretive Center this summer, you'll find a brand new exhibit about marine debris. This is a term for any persistent solid material created by humans, that finds its way into our marine environment.

Though marine debris can be any manufactured material such as cloth, rubber, or metal, plastics are especially problematic. Plastics are common and conspicuous on our beaches, and can last a long time. They often break down into smaller pieces, but they don't completely go away. "Microplastics" are pieces of plastic that are less than 5mm long. Microplastics can come from larger pieces of plastic that have broken down over and over again. Or, microplastics can be manufactured. For example, pre-production industrial plastic pellets or plastic "micro-scrubbers" in face wash are considered microplastics. These tiny, floating particles mix in with living plankton and can disrupt ocean food webs.

Studies have shown that fish, birds, and other marine life do eat plastic. Plastics could cause irritation or damage to the digestive system. If plastics are kept in the gut instead of passing through, animals could feel full (of plastic not food) and this could lead to malnutrition or starvation. Plastic debris also accumulates pollutants such as PCBs (polychlorinated biphenyls), which may cause health problems for marine life.

It is a global problem, and it is an everyday problem. There is no part of the world left untouched by debris and its impacts. Marine debris is a threat to our environment, navigation safety, the economy, and human health. Most of all, marine debris is preventable.

What can we do?

- Get involved! Participate in local cleanups in your area.
- Come and visit our new Marine Debris exhibit to learn more.
- Remember that the land and sea, no matter where you are, are connected.



- Reduce the amount of waste you produce. Reuse items whenever possible. Choose reusable items (like shopping bags and water bottles) over disposable ones. Recycle as much as possible. Bottles, cans, cell phones, ink cartridges, and many other items can be recycled.



### How You Can Help

Grassroots involvement is the core of Padilla Bay Foundation’s commitment to protecting our estuaries and supporting the Padilla Bay National Estuarine Research Reserve. Members of the Padilla Bay Foundation contribute directly to environmental education and research at Washington State’s only Estuarine Research Reserve.

Memberships can be for multiple years. Please consider payment of 2 or 3 years at a time, as this will save the Foundation considerable labor and mailing costs and insure that your dues work harder supporting the programs you care about.

Categories of membership are:

Senior/Student	\$25
Individual	\$35
Family	\$50
School/Organization	\$50+
Supporting	\$75
Sustaining	\$100+
Small Business	\$100+
Sponsor	\$250
Patron	\$500
Steward	\$1000

Send your contribution to:  
 Padilla Bay Foundation  
 PO Box 1305  
 Mount Vernon, WA 98273  
 (360) 757-3234  
 a 501(c)(3) organization

Visit our blog at [www.padillabayfoundation.org](http://www.padillabayfoundation.org).

### Taste of Padilla Bay

Enjoy our annual auction dinner Saturday, August 19, 2017. This year’s benefit fundraiser will support a Touch Pool Experience in Padilla Bay’s aquarium room.

We will be serving a sumptuous summer buffet with tastes of Padilla Bay and the cuisine of Maine as we recognize our sister Reserve at the historic Laudholm Farm in Wells, Maine. Our event features both a silent & live auction with live music by Jumbled Pie.

The event will be outdoors under canopies and in the historic Breazeale Farm Barn. Watch for more details and ticket information.

#### Foundation Board Members

- President: Rebecca Spurling
- Vice-president: Andrew Entrikin
- Secretary: Connie Walser
- Treasurer: Deb Canon
- Glenda Alm
- Nate Biletnikoff
- Paul Dinnel
- Ed Gastellm
- Mary Heath
- Tim Manns
- Katrina Poppe
- Gail Smith
- Kay Reinhardt - Administrator
- Terry Stevens - Advisory Member

Name _____ Address _____ City/State/Zip _____ E-mail address _____	Membership Category _____ (see reverse) Membership Amount \$ _____ Extra Donation \$ _____
mail to: <b>Padilla Bay Foundation</b> <b>P. O. Box 1305</b> <b>Mount Vernon, WA 98273</b>	<input type="checkbox"/> Check enclosed <input type="checkbox"/> Charge my card (VISA/Mastercard) Card # _____ Expiration Date _____ Signature _____

# Summer Events

## Workshops for Teachers

Please call or check our website for details.

### Project WET: Teaching about water and water resources.

Wednesday, June 28, 9:00am-4:30pm

An interdisciplinary K-12 curriculum with activities and lessons focused on water resources and environmental education.

### Carbonated Water: Inquiry based strategies for teaching ocean acidification in middle and high school classrooms.

Tuesday, July 25 – Thursday, July 27, 2016

Explore climate change and ocean acidification in the Pacific Northwest with field experiences and local data.

## Bioluminescence in the Salish Sea

Have you been fortunate enough to witness a sparkling blue light in Salish Sea waters? Perhaps a trail of glitter behind your boat? A mini explosion of light as you toss a stone into the bay? Bioluminescent plankton are microscopic organisms that give off light when disturbed. Marine biologist and Padilla Bay educator, Chandler Colahan will share her love and knowledge of these glow-in-the-dark neighbors. We may even share some live, glowing critters! **Saturday, June 3, 1:00-2:00PM.**

## Eelgrass Wasting Disease in the San Juans

Eelgrass wasting disease is caused by a marine slime mold and shows up as dark patches or lesions on eelgrass blades. This disease devastated Atlantic eelgrass beds in the 1930s and is currently common in the San Juan Islands. Researchers have found that older, denser eelgrass beds may be more susceptible to the disease, and warming water may increase its prevalence. Join Morgan Eisenlord, from Cornell University and Friday Harbor Labs to learn more about this potentially damaging disease and the patterns and trends researchers are seeing in our local waters. **Tuesday, June 20, 1:00-2:30PM.** Please register online or call the Interpretive Center.

## Wild Edible and Medicinal Plants

Come and experience our annual celebration of early summer's bounty. Join naturalist Marlee Osterbauer in this search for wild edible plants. She will share her extensive knowledge of plant uses and folklore. A notebook and pencil are useful. This 2 hour class is offered twice.

**Friday, July 7 and Saturday July 8, 2:00-4:00PM.** Please register online or call the Interpretive Center.

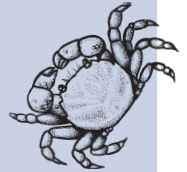
The Breazeale Interpretive Center is open to the public

Tuesday-Saturday, 10:00-5:00.

Closed July 4, 2017

Register online or by phone.

(360) 428-1558 [www.padillabay.gov](http://www.padillabay.gov)



## Sounds of Summer Birds

Feeding the brood is the name of the game for summer birds. Join naturalist, Libby Mills, listening and looking for summer birds at Padilla Bay. Be prepared for a **slow** walk around the reserve uplands. Binoculars and field guides are available at the Interpretive Center. Meet in the Padilla Bay parking lot. Offered twice, **Saturday, June 10 and Sunday, June 11, 8:00AM-12:00 noon.** Register online or call the Interpretive Center.

## Aquarium Tour and Fish Feeding

Come and find out what's new and exciting in our aquariums. Join aquarist, Mark Olson for a behind-the-tanks view of the system, and a close-up look at our amazing critters. **Saturday, August 26, 11:00AM.** No need to register. Just join us in the aquarium room.

## Fidalgo Bay Day

Don't miss this fun-filled celebration with activities for the whole family. Beach seine, canoe rides, fish prints, sea creature touch tank, salmon BBQ and much more. August 12, 11:00AM-3:00PM at the Fidalgo Bay RV Resort. Check the Skagit Marine Resource Committee website for info.

## Mud Flat Safaris

When the tide goes out at Padilla Bay, it goes all the way out! Come explore this huge expanse of mud, teeming with life. Come with old shoes that tie or snug boots. All ages welcome. The programs begin at the Padilla Bay Interpretive Center, and end at Bay View State Park. Call the Interpretive Center or register online.

**Friday, July 7 from 10:00AM-Noon**

**Tuesday, July 11 from 1:00-3:00PM**

**Saturday, August 5 from 10:00AM-Noon**

**Tuesday, August 22 from 10:00AM-Noon**

## Beach Seines

No need for SCUBA to see what's living out there in the bay. Just meet on the beach at Bay View State Park and watch while we pull a fish net through the water. Bring boots or old shoes that can get muddy. No registration necessary

**Friday, July 14 at 12:30PM**

**Thursday, August 3 at 11:00AM**

**Friday, August 25 at 1:00PM (State Park free day!)**



Padilla Bay National Estuarine Research Reserve  
Breazeale Interpretive Center  
10441 Bay View-Edison Road  
Mount Vernon, WA 98273

PRSR STD  
US POSTAGE PAID  
WA STATE DEPT  
OF PRINTING 98501



*Padilla Bay*

## Monthly Youth Programs Offer Fun Learning

Mini Explorers are the 3-5 year old learners. We look at a new topic each month, with stories, games, hands-on observations, art projects, and plenty of action. Call the Interpretive Center to register.

**June 21 & 22, 10:00AM & 1:00PM**

*Elegant Eelgrass—This amazing plant is what makes Padilla Bay so special. This active class includes a short trip to the beach, so bring a jacket and old shoes.*

**July 19 & 20 10:00AM & 1:00PM**

*Snails and Friends—Come learn all about our slow-sliding snails and beautiful sea slugs.*

**August 23 & 24, 10:00AM & 1:00PM**

*Mudflat Safari—Join us for an excursion on Padilla Bay's mudflat. Bring a jacket and snug boots or shoes that tie.*

Junior Ecologists are 6-9 year olds who have fun exploring the estuary. Excursions to the beach, science experiments, games, art projects –this program is guaranteed fun! Call the Interpretive Center to register.

**June 16 & 17, 10:30AM-Noon**

*Upland Trail Exploration—We'll enjoy activities and games in Padilla Bay's forest and meadows. Mornings can be chilly, so wear a warm jacket and be prepared for fun.*

**July 21 & 22, 10:30AM-Noon**

*Mudflat Safari—Join us for an excursion on Padilla Bay's mudflat. Bring a jacket and snug boots or shoes that tie.*

**August 18 & 19, 10:30AM-Noon**

*Gastropods - Snails and Sea Slugs—These are some of Padilla Bay's coolest critters, with surprising variety. We'll visit the beach, so bring a jacket and snug boots or shoes that tie.*

### Watershed Art and Discovery Day - Saturday, June 24, 11:00AM - 2:00PM

Play, create, and learn all about estuaries and the wonderful creatures that inhabit our local ecosystems through fun interactive exploration and art!

- Create your own estuary collage
- Wildlife stamp making
- Construct your own jellyfish
- Create a miniature wildlife habitat village

Activities and classes will be taught by Artist in Residence, Barbara Summers, and Skagit Conservation Education Alliance staff. Please call the reserve or register online. [www.padillabay.gov](http://www.padillabay.gov)