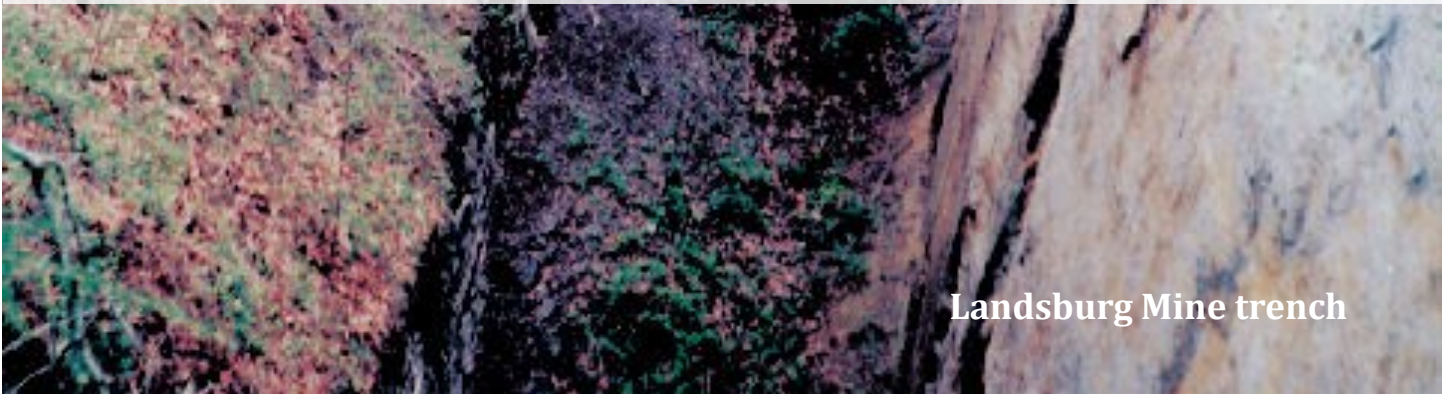


# Landsburg Mine Site Cleanup Update



Landsburg Mine trench

## CONTACTS & INFORMATION

Jerome Cruz - Site Manager  
Department of Ecology,  
Northwest Regional Office  
3190 160th Ave. SE  
Bellevue, WA 98008-5452  
Phone: (425) 649-7094  
E-mail: [Jerome.Cruz@ecy.wa.gov](mailto:Jerome.Cruz@ecy.wa.gov)

### Document review locations:

Department of Ecology,  
Northwest Regional Office  
Call for appointment  
Phone: (425) 649-7000

Maple Valley Public Library  
21844 SE 248th Street  
Maple Valley, 98038  
Phone: (425) 432-4620

### Website:

[www.Bit.ly/EcyLandsburgMine](http://www.Bit.ly/EcyLandsburgMine)



Scan this QR code with your smart phone to visit Ecology's website for more information!

## Cleanup to start 2017

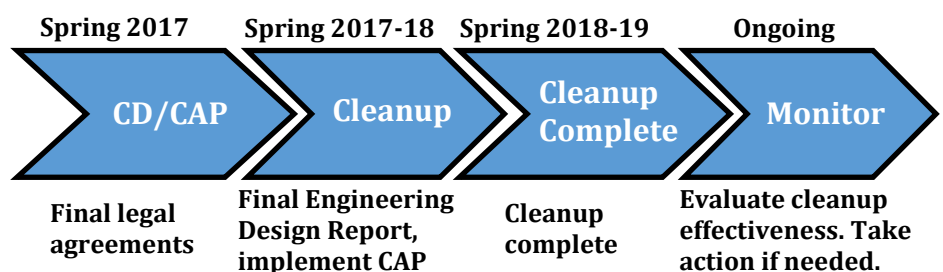
Ecology will finalize the legal agreement (Consent Decree or CD) and Final Cleanup Action Plan (CAP) with those responsible for paying for the cleanup (see page 2 for a list of the Potentially Liable Persons or PLPs). Ecology held a public comment period for the draft CD and Draft Cleanup Action Plan in 2013. We received no comments that resulted in major changes. You can view Ecology's response to comments (Responsiveness Summary), CD and CAP at the document review locations or on the website.

## Groundwater not contaminated from industrial wastes disposed of in mine

The Landsburg Mine site is a former underground coal mine located about 1.5 miles northwest of Ravensdale in southeast King County. The Cedar River is approximately 500 feet north of the site. (see map on page 2.) The former mine site is on property now owned by Palmer Coking Coal Company and formerly by the Plum Creek Timber Company, L.P.

During the late 1960s to late 1970s, industrial wastes were disposed of in the trench that formed above the former mine. Under Ecology's oversight, the PLPs investigated the groundwater in 1994 and have monitored it since then. Groundwater at the site and surrounding areas is not contaminated from the mine wastes.

## Anticipated Cleanup Schedule



## Roles and Responsibilities

Department of Ecology oversees site investigations, cleanup planning and cleanup implementation. Potentially Liable Persons (PLPs) pay for investigation and cleanup. The PLPs are:

- Browning-Ferris Industries of Illinois, Inc.
- BNSF Railway Company
- PACCAR
- Plum Creek Timberlands, L.C.
- Palmer Coking Coal Company



*Photo Credit, Barry Kombol 1973*

### Special accommodations

To request ADA accommodation for disabilities, or printed materials in a format for the visually impaired, call Ecology at 425-649-7286 or visit <http://www.ecy.wa.gov/accessibility.html>.

Persons with impaired hearing may call Washington Relay Service at 711. Persons with speech disability may call TTY at 877-833-6341.

**Facility Site ID #:** 2139

**Cleanup Site ID#:** 60

## Cleanup Plan is designed to protect drinking water, people, and the environment. It will:

- **Cover and contain the waste in the north trench** with a protective soil cover to prevent contact with the waste.
- **Reduce rainwater seeping into the trench**, which could travel through the contamination and carry it into the groundwater.
- **Monitor groundwater** with early warning wells and long-term monitoring.
- **Restrict future land use** to protect the soil cover.
- **Prohibit groundwater from being used in the mine site area** except for monitoring purposes.
- **Test nearby private wells** annually for five years and re-evaluate if further testing is needed.

## Contingency Plan is in place if contamination is found in monitoring wells. It will:

- **Install cement pad, electrical connections, fencing and temporary pipeline and improve existing gravel road** for access to pumping and treatment systems.
- **Pump, contain, treat, and discharge** any contaminated groundwater to sewer.
- **Confirm that any contaminated groundwater is captured** to prevent offsite migration and protect the nearby groundwater.

## Drinking water is not contaminated from mine site

Ecology has overseen groundwater investigations and monitoring for contamination in the Landsburg Mine site for over 24 years. The City of Kent's Clark Springs Water supply and private wells near the site have also been tested by Ecology or independently. During that time, no contamination from the site has been found in groundwater from the site or nearby areas.

The PLPs will conduct a survey to locate private wells in the area. Private wells near the north and south ends of the Rogers Mine will be tested every year for five years. Ecology and the PLPs will then evaluate if regular testing will be needed in the future. No testing is necessary in wells east and west of the trench because groundwater from the mine does not readily flow in those directions.



*Well Sampling, 2014*



## Landsburg Mine Health Consultation

Washington State Department of Health (Health) worked with Ecology and the City of Kent to complete a health consultation. They wanted to learn if the work done at the Landsburg Mine site provided the information they need to determine whether there is a potential threat to drinking water supplies and surface water in the area. **Health learned three things:**

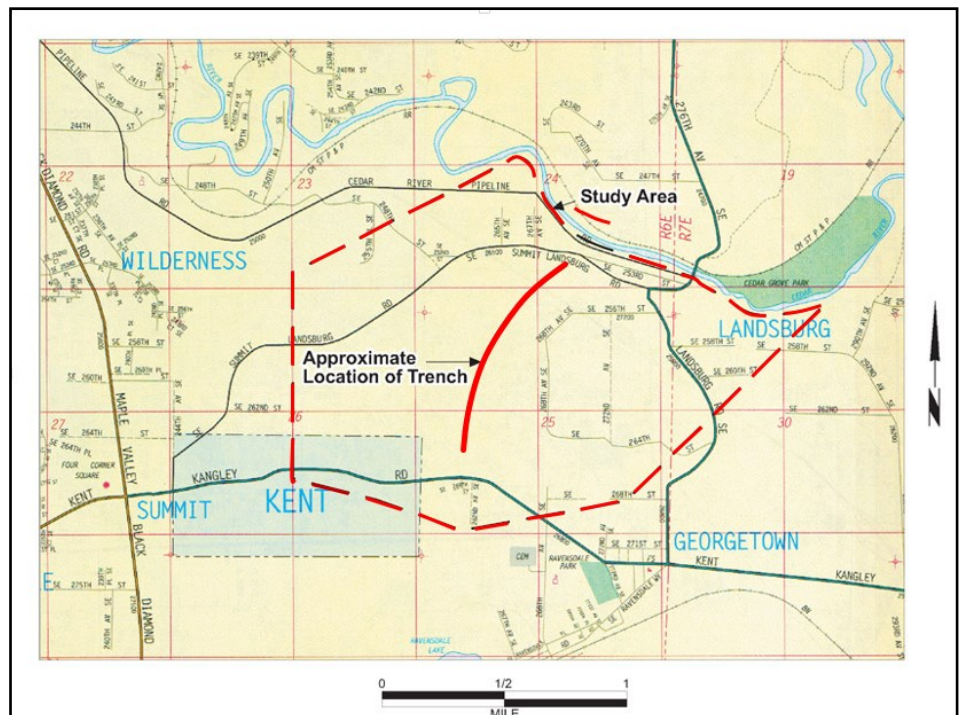
**The waste at the site could pose a health threat to groundwater** in the area, which is used for drinking water.

**None of the groundwater chemicals that were evaluated, except arsenic, pose a health threat.** Although the highest level of arsenic found at the site presents some risk of long-term health effects, no one is drinking the groundwater and the level of arsenic is below drinking water standards.

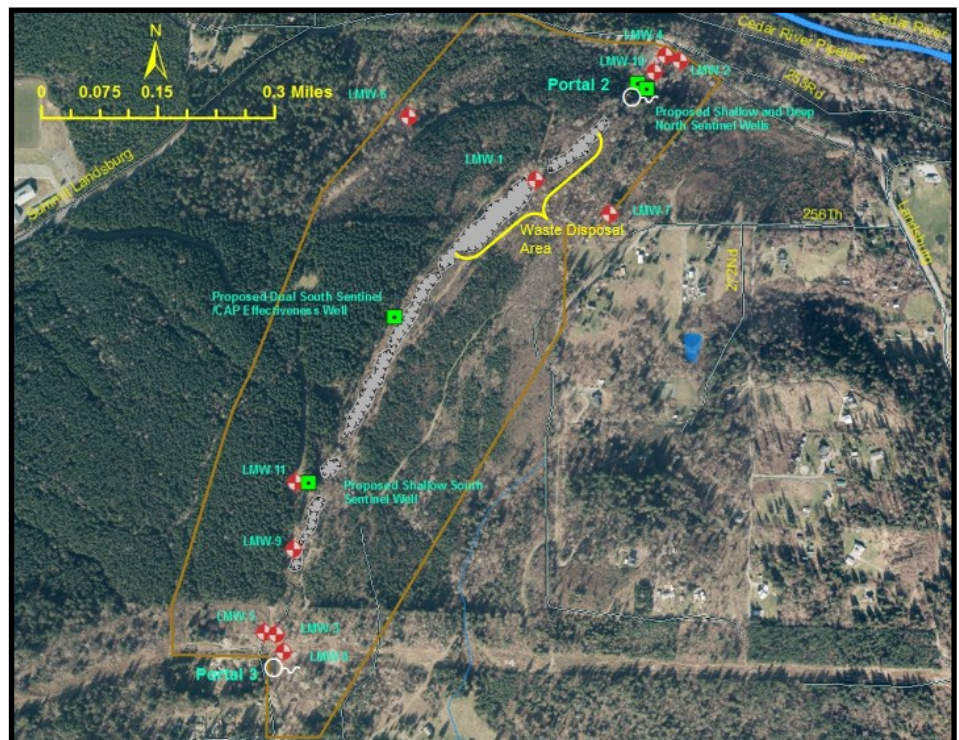
**There are some physical hazards at the site**, including steep trench walls and possible openings into the mine.

Ecology and the Potentially Liable Persons agreed to take actions to address many of Health's suggestions. A full copy of the health consultation report and recommendations is available at [www.doh.wa.gov/](http://www.doh.wa.gov/)

## Location Map: Landsburg Mine Trench



## Proposed monitoring well locations



Trench



Existing Monitoring Well



Proposed Sentinel Well

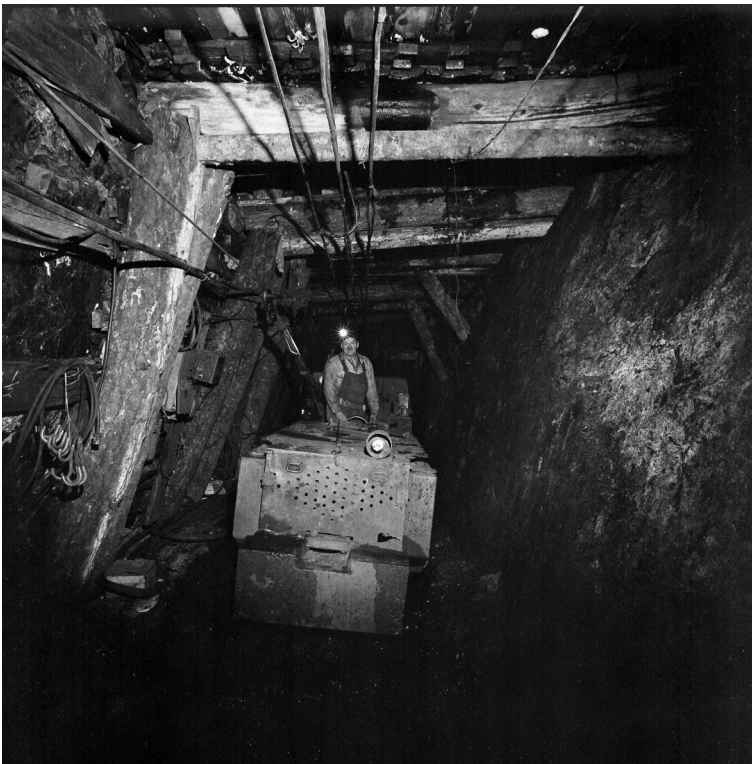
### LEGEND



PO Box 47600

Olympia, WA 98504-7600

## Landsburg Mine Cleanup Update



### **Cleanup begins Spring 2017**

Ecology finalized a legal agreement (Consent Decree) and Final Cleanup Action Plan (CAP) for the Landsburg Mine. Ecology responded to public comments to the Remedial Investigation, Feasibility Study and Draft Cleanup Action Plan in 2013. View documents here:

**Website:** [www.Bit.ly/EcyLandsburgMine](http://www.Bit.ly/EcyLandsburgMine)

### **La limpieza de la Mina Landsburg empieza la primavera del 2017**

Ecología finalizó el acuerdo legal (Decreto de Consentimiento) y el Plan Final de Acción de Limpieza para la Mina Landsburg. Un periodo de comentario público para la Investigación de Remediación, el Estudio de Viabilidad y el Borrador del Plan de Acción de Limpieza se celebró en el 2013. Para mayor información en español, contacte a José Luis Buen Abad al

(425) 649-4485.

*Photo Credit, Larry Abele , 1973*