

# Padilla Bay Newsletter

A Joint Publication of the Padilla Bay Foundation and Padilla Bay National Estuarine Research Reserve

Winter 2018-2019



**Padilla Bay**

National Estuarine Research Reserve

Padilla Bay National Estuarine Research Reserve is managed by the Washington State Department of Ecology under the National Estuarine Research Reserve System established by NOAA.

[www.padillabay.gov](http://www.padillabay.gov)

[swood@padillabay.gov](mailto:swood@padillabay.gov)

10441 Bay View-Edison Road  
Mount Vernon, WA 98273  
(360) 428-1558



**PADILLA BAY  
FOUNDATION**

The Padilla Bay Foundation is a membership-based non-profit organization formed in 1987. Its mission is to help preserve the Padilla Bay estuary in Skagit County, Washington, through support of Padilla Bay National Estuarine Research Reserve.

Padilla Bay Foundation  
[www.padillabayfoundation.org](http://www.padillabayfoundation.org)  
PO Box 1305  
Mount Vernon, WA 98273  
(360) 757-3234  
[foundation@padillabay.gov](mailto:foundation@padillabay.gov)

For more news, research updates, program details, see our website at [www.padillabay.gov](http://www.padillabay.gov).

To request materials in a format for the visually impaired, call the Reserve at 360-428-1558, Relay Service 711, or TTY 877-833-6341.

Publication No. 18-06-013

## Farewell to Retiring Director, Terry Stevens

After 35 years, the Padilla Bay Reserve is saying farewell to Director Terry Stevens. Terry joined the reserve in 1983, just months after it was officially founded by the National Oceanic and Atmospheric Administration and Department of Ecology. Terry was no stranger to the reserve. As a shoreline planner with Skagit County, he had served on the project team to help make the reserve a reality. When the director position opened, he felt that it was a great fit. He was ready to take a break from the regulatory world and focus on other interests, including scientific research, education, facility management, and real estate. This broad skill set positioned him perfectly for building the reserve from the ground up and acquiring thousands of acres of tide flats.



When asked what he feels most proud of, Terry said, "One of my top priorities was finding the very best people to fill our staff positions. I feel that I helped put gifted people in key positions, many of them working here for over 25 years. They've been leaders in their fields and contributed enormously here in Washington and to the national reserve system."

Other accomplishments that have marked Terry's tenure include expansion of the Reserve campus to include a new laboratory, guesthouse, training room, aquarium, and staff offices. He has built solid relationships within the local community, as well as with members of congress at the state and federal level. Other reserve directors have viewed Terry as a mentor, and he has helped several reserves go through the lengthy establishment process, traveling from Alaska to the Great Lakes and east coasts to meet with advisory groups and governmental officials.

Terry played a major role in launching the Padilla Bay Foundation in 1987, the National Estuarine Research Reserve Association in 1988, the Northwest Straits Marine Conservation Initiative in 1998 and the Northwest Straits Conservation Foundation in 2002.

When asked what he is looking forward to in retirement, Terry says that he plans to stay active with state and local conservation organizations and continue contributing to the protection of our aquatic resources. He also would "like to go catch some of them!"

Research Coordinator, Dr. Jude Apple has been appointed Interim Director and will assume Terry's duties in November 2018. Terry will remain with the Department of Ecology through the winter to assist with transition and complete ongoing construction and real estate projects.



### How You Can Help

Grassroots involvement is the core of Padilla Bay Foundation’s commitment to protecting our estuaries and supporting the Padilla Bay National Estuarine Research Reserve. Members of the Padilla Bay Foundation contribute directly to environmental education and research at Washington State’s only Estuarine Research Reserve.

Memberships can be for multiple years. Please consider payment of 2 or 3 years at a time, as this will save the Foundation considerable labor and mailing costs and insure that your dues work harder supporting the programs you care about.

Categories of membership are:

Senior/Student	\$25
Individual	\$35
Family	\$50
School/Organization	\$50+
Supporting	\$75
Sustaining	\$100+
Small Business	\$100+
Sponsor	\$250
Patron	\$500
Steward	\$1000

Send your contribution to:  
 Padilla Bay Foundation  
 PO Box 1305  
 Mount Vernon, WA 98273  
 (360) 757-3234  
 a 501(c)(3) organization

### Welcome New WCC Staff

Two new Americorps/Washington Conservation Corps members joined the Padilla Bay staff this past fall. Welcome to Kat McCarrol (right) who will be helping with education programs, and to Erin Matthews will be working with the research staff. Read more about our newest staff at Padilla Bay’s website: [www.padillabay.gov](http://www.padillabay.gov) and click on Education > Newsletter.



### Foundation Board Members

President: Andrew Entrikin  
 Vice-president: Katrina Poppe  
 Treasurer: Deb Canon  
 Secretary: Connie Walser

Glenda Alm  
 Patty Blakeway  
 Paul Dinnel  
 Ed Gastellum  
 Tim Manns  
 Sue Russell  
 Gail Smith

Terry Stevens - Advisory Member  
 Kay Reinhardt - Administrator

Name \_\_\_\_\_

Membership Category \_\_\_\_\_

Address \_\_\_\_\_

(see reverse)

City/State/Zip \_\_\_\_\_

Membership Amount \$ \_\_\_\_\_

E-mail address \_\_\_\_\_

Extra Donation \$ \_\_\_\_\_

Check enclosed

Charge my card  
 (VISA/Mastercard)

mail to:

Padilla Bay Foundation  
 P. O. Box 1305  
 Mount Vernon, WA 98273

Card # \_\_\_\_\_

Expiration Date \_\_\_\_\_

Signature \_\_\_\_\_



## Presentations for December, January, and February 2018-2019

### Upland to Bay to Skagit Flats: Winter Birds with Libby Mills

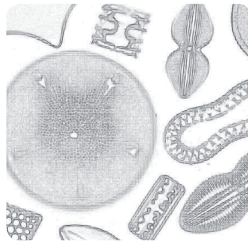
Our hardy resident birds are busy with winter foraging, while migrants from the north are filling the fields and bays. Come explore the uplands, farmland, and waters around Padilla Bay with Libby Mills. Bring warm layers and a snack. Binoculars are available for those who needs them. We'll meet at the Interpretive Center parking lot. This class is offered twice, **Saturday, November 24, and Saturday, December 1, 8:00AM-12:00 noon.** Please register online or call the Interpretive Center.

### Introduction to Hawks of the Skagit

Learn to recognize the most common species in our area with raptor biologist and falcon aficionado, Bud Anderson. A slide presentation from 10:00AM-12:00noon will introduce you to raptor biology, field characteristics, and common behaviors. An afternoon field trip runs until around 2:00PM and is limited to 15 participants. **Saturday, January 5, 10:00AM-12:00 noon.** Register online or by phone. There is a separate registration for the field trip.

### Drawing Plankton

Come discover dazzling planktonic forms through observation and drawing. Join artist, Annie England for a microscopic look at our underwater world, and learn artistic techniques to capture their elegant designs. This class will include a brief history of planktonic art, time to observe plankton under a microscope, and drawing exploration. We will provide graphite pencils, erasers, and paper. Feel free to bring additional drawing supplies. The class is offered twice: **Friday January 11 and Saturday January 12, 1:00-2:30pm.** Register online or call the Interpretive Center.



### Aquarium Tour and Fish Feeding

Come and find out what's new and exciting in our aquariums. Join aquarist, Mark Olson for a behind-the-tanks view of the system, and a close-up look at the amazing critters in the tanks. **Saturday, January 19, 11:00AM.** No need to register. Just join us in the aquarium room at 11:00.

The Breazeale Interpretive Center is open to the public Tuesday-Saturday, 10:00-5:00.

Closed December 25 and January 1.

Register online or by phone.

[www.padillabay.gov](http://www.padillabay.gov)

(360) 428-1558



### Storming the Sound

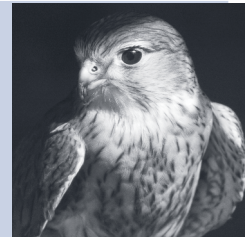
This environmental education conference connects teachers, college students, agency and non-profit educators, and community volunteers for a day of networking, learning, and sharing. We especially welcome classroom teachers to join us. Held at Maple Hall in LaConner on **Thursday, January 24, 2019, 9:00-4:30.** Meet with old and new friends and hear from the movers and shakers of Environmental Education in the Central Salish Sea. For registration information see our website at [www.padillabay.gov/storming](http://www.padillabay.gov/storming).

### Swans, Geese and Dabbling Ducks

Mild weather and available food make NW Washington an attractive place for waterfowl to overwinter. We will learn about migration routes, distribution, behavioral ecology and foraging habits of common species. Join us to discover what it takes to wear those waterproof feathers up and down the Northwest Coast. Instructor, David Drummond is a wildlife biologist-Naturalist who has spent many winters surveying waterfowl from the Arctic to Antarctic. **Saturday February 9, 1:00-2:30pm.** Please register online or call the Interpretive Center.

### Raptor Class

The Skagit Flats are nationally recognized for their hundreds of wintering birds of prey. This class will teach you about different kinds of raptors, emphasizing field identification and the particularly fascinating element of winter behavior. Instructor Bud Anderson has studied raptors for over 35 years, and has an incredible knowledge of local populations and peregrine falcons. This 5 week class meets Tuesdays from 7:00-9:00PM beginning **January 8,** with a Saturday field trip. The class fee is \$175 per person. To register, send check to the Padilla Bay Foundation, 10441 Bay View-Edison Rd., Mount Vernon WA 98273.



## Monthly Youth Programs Offer Fun Learning

**Mini Explorers** are the 3-5 year old learners. We look at a new topic each month, with stories, games, hands-on observations, art projects, and plenty of action. Call the Interpretive Center to register or register online.

**December 12 & 13, 10:00AM & 1:00PM**

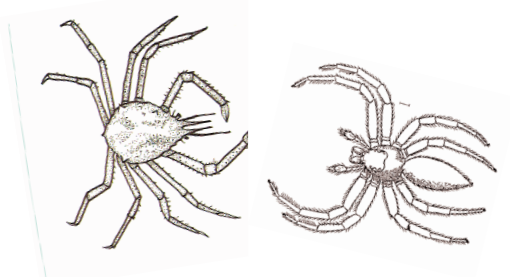
**Wrack and Wreath**—We'll explore treasures that washed up on Padilla Bay's beach and create holiday decorations.

**January 16 & 17, 10:00AM & 1:00PM**

**Spider Crabs or Crab Spiders**—What makes a crab a crab and a spider a spider. Come explore the cool world of arthropods and meet some fun estuary critters.

**February 13 & 14, 10:00AM & 1:00PM**

**How Animals Move**—Swimming, flying, crawling squirming—only a few estuary animals walk on two legs like you!



**Junior Ecologists** are 6-9 year olds who have fun exploring the estuary. Excursions to the beach, science experiments, games, art projects, and studying life in the bay—this program is guaranteed fun! Call the Interpretive Center or register online.

**December 8 & 14, 10:30AM-12:00 noon**

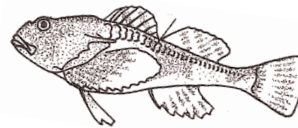
**Wrack and Wreath**—We'll explore treasures that washed up on Padilla Bay's beach and create holiday decorations.

**January 11 & 12, 10:30AM-12:00 noon**

**Science Journals**—We'll create science journals and use Padilla Bay's aquariums to study and record our observations of estuary animals.

**February 8 & 9, 10:30AM-12:00 noon**

**Fantastic Fish**—Learn all about the fish of Padilla Bay and build a colorful tissue paper wind sock.



Padilla Bay National Estuarine Research Reserve  
Breazeale Interpretive Center  
10441 Bay View-Edison Road  
Mount Vernon, WA 98273

PRSR STD  
US POSTAGE PAID  
WA STATE DEPT  
OF PRINTING 98501



*Padilla Bay*