



POLLUTION PREVENTION ASSISTANCE PARTNERSHIP

2017–2019 BIENNIUM REPORT



FEBRUARY 2020
ECOLOGY PUBLICATION 20-04-005



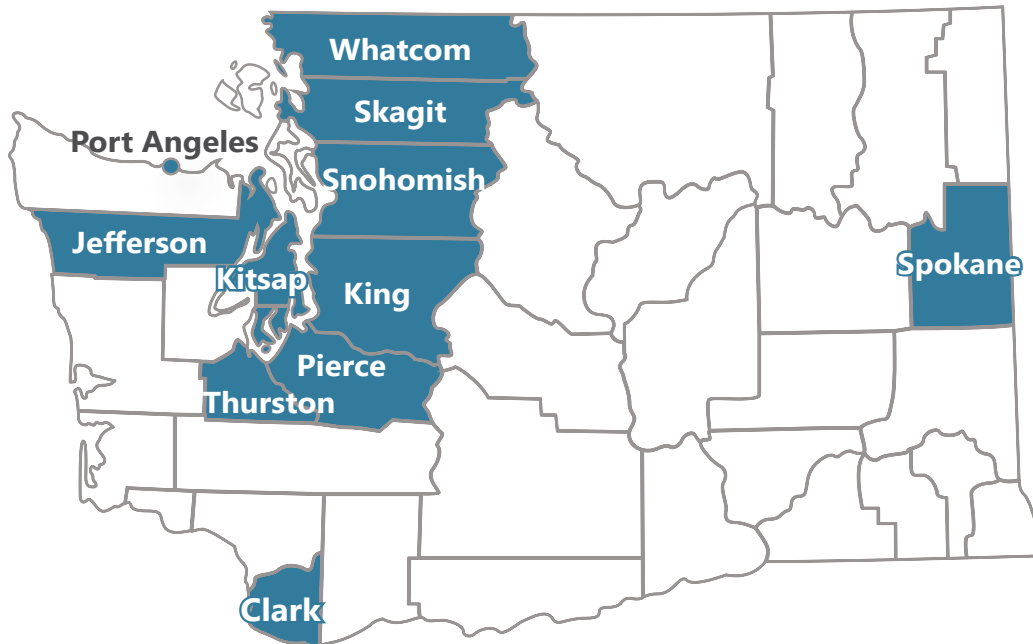


CONTENTS



PARTNER JURISDICTIONS	2
MAP OF PPA PARTNERS	2
WHO TO CONTACT.	3
MEET THE PARTNERSHIP	4
WHAT IS PPA?	5
COMMON INDUSTRIES SERVED	6
ISSUES SPECIALISTS CAN ADDRESS	7
ISSUES AND RESOLUTION	8
SPILL KITS AND SECONDARY CONTAINMENT.	10
TRAINING FOR PPA SPECIALISTS	10
PARTNER SUCCESS STORIES	12
CLARK COUNTY PUBLIC WORKS	13
KING COUNTY WATER AND LAND RESOURCES	14
SPOKANE REGIONAL HEALTH DISTRICT	15
TACOMA-PIERCE COUNTY HEALTH	16
WHATCOM COUNTY HEALTH	17
LOOKING FORWARD	18
PROGRAM HISTORY	19
PROGRAM FUTURE	20

MAP OF PPA PARTNERS



During the 2017–2019 biennium, the partnership consisted of **42 specialists from 21 jurisdictions**. PPA partners were located in three critical areas: **Puget Sound, the Columbia River Basin, and the Spokane River Basin.**

PARTNER JURISDICTIONS

Clallam County

City of Port Angeles

Clark County

Clark County Department of Public Works
Clark County Public Health

Jefferson County

Jefferson County Public Health

King County

City of Bothell
City of Issaquah
City of Kirkland
City of Redmond
City of Shoreline
King County Water and Land
Seattle Public Utilities

Kitsap County

Kitsap Public Health District

Pierce County

City of Puyallup
City of Sumner
Tacoma-Pierce County Health Department

Skagit County

Skagit County Department of Public Health

Snohomish County

Snohomish Health District

Spokane County

Spokane Regional Health District

Thurston County

Thurston County Public Health

Whatcom County

City of Bellingham
Whatcom County Health Department

WHO TO CONTACT

For more information about the Pollution Prevention Assistance Partnership, contact the coordinator:

PPA COORDINATOR

Elaine Snouwaert
Elaine.Snouwaert@ecy.wa.gov
Phone: 509-329-3503

To contact your local pollution prevention specialist, please visit our webpage to find the correct contact for your county:

www.ecology.wa.gov/ppa

If you are located in an area without a local partner, please contact:

WEST OF THE CASCADE CREST

Marietta Sharp
Marietta.Sharp@ecy.wa.gov
Phone: 425-649-7271

EAST OF THE CASCADE CREST

Andy Maher
Andy.Maher@ecy.wa.gov
Phone: 509-329-3612



MEET THE PARTNERSHIP

In 2007, the Washington State Legislature allocated funding to establish the Local Source Control Partnership, a program to help small businesses reduce and manage potential wastes to protect water, soil, and air quality.

Local Source Control was rebranded as Pollution Prevention Assistance (PPA) in 2016. This new name was part of an effort to emphasize the benefits of the program to the public and businesses.

The partnership uses a unique team approach involving local, regional, and state staff with the expertise to solve pollution problems through source control.

Through interagency agreements with the Department of Ecology, local jurisdictions get funding to provide free, one-on-one technical assistance to small businesses. Specialists in these jurisdictions show businesses how to manage their wastes properly and help diagnose and fix stormwater-related issues. Specialists can also offer businesses help with complicated regulatory issues.

SINCE THE PROGRAM BEGAN IN 2008:



More than
35,000
completed visits



More than
38,000
issues found



95%
issues resolved

The Pollution Prevention Assistance (PPA) partnership is comprised of local governments including cities, counties, and health districts.

PPA: A technical assistance program that helps small businesses prevent pollution.

The problem: Small businesses typically have limited access to expertise on stormwater management or hazardous waste handling and disposal. Hands-on assistance and regulatory advice can be hard to come by.

The solution: PPA specialists in participating jurisdictions offer free, on-site technical assistance to help small businesses identify and resolve possible causes of pollution. This assistance and regulatory advice reduces health risks for employees and prevents polluted runoff from harming Washington's rivers and streams, as well as Puget Sound.

Thanks to Pollution Prevention Assistance, businesses:

- Adopt safer material handling and storage practices.
- Manage interior and exterior drainage systems to reduce impacts to stormwater.
- Plan for spill prevention and preparedness.
- Use fewer toxics in their processes or replace toxic chemicals with safer alternatives.

WHAT IS PPA?



COMMON INDUSTRIES SERVED

Specialists can **serve most industries**. During the 2017–2019 biennium, the most common industries served were:

- Restaurants, cafes, and bars.
- Vehicle repair and maintenance facilities.
- Apartment complexes.
- Commercial and personal laundry services.
- Motor vehicle and parts dealers.
- Nail salons.
- Medical clinics.
- Landscaping companies.
- Mobile businesses (like dog washers or carpet cleaners).

ISSUES SPECIALISTS CAN ADDRESS

Specialists conduct on-site visits to address possible causes of pollution.

Specialists look closely at business practices, offer solutions to practices that could pollute the environment, and suggest alternatives to the hazardous materials that businesses use, store, and dispose of every day.

Recommendations often contribute to a safer environment and can save money.

Their goal is to help businesses make changes to limit or eliminate potential pollution and reduce impacts to state waters. Specialists encounter many different types of wastes and sometimes draw on Ecology and other agency staff for their expertise in dealing with those wastes.

Partner jurisdictions attempt to resolve pollution problems locally. In some cases, specialists refer the business to Ecology or another regulatory program for additional assistance.

“ *We build relationships through one-on-one technical guidance. This support can improve business operations, provide a safer workplace, and decrease the potential to pollute.* ”

—City of
Kirkland



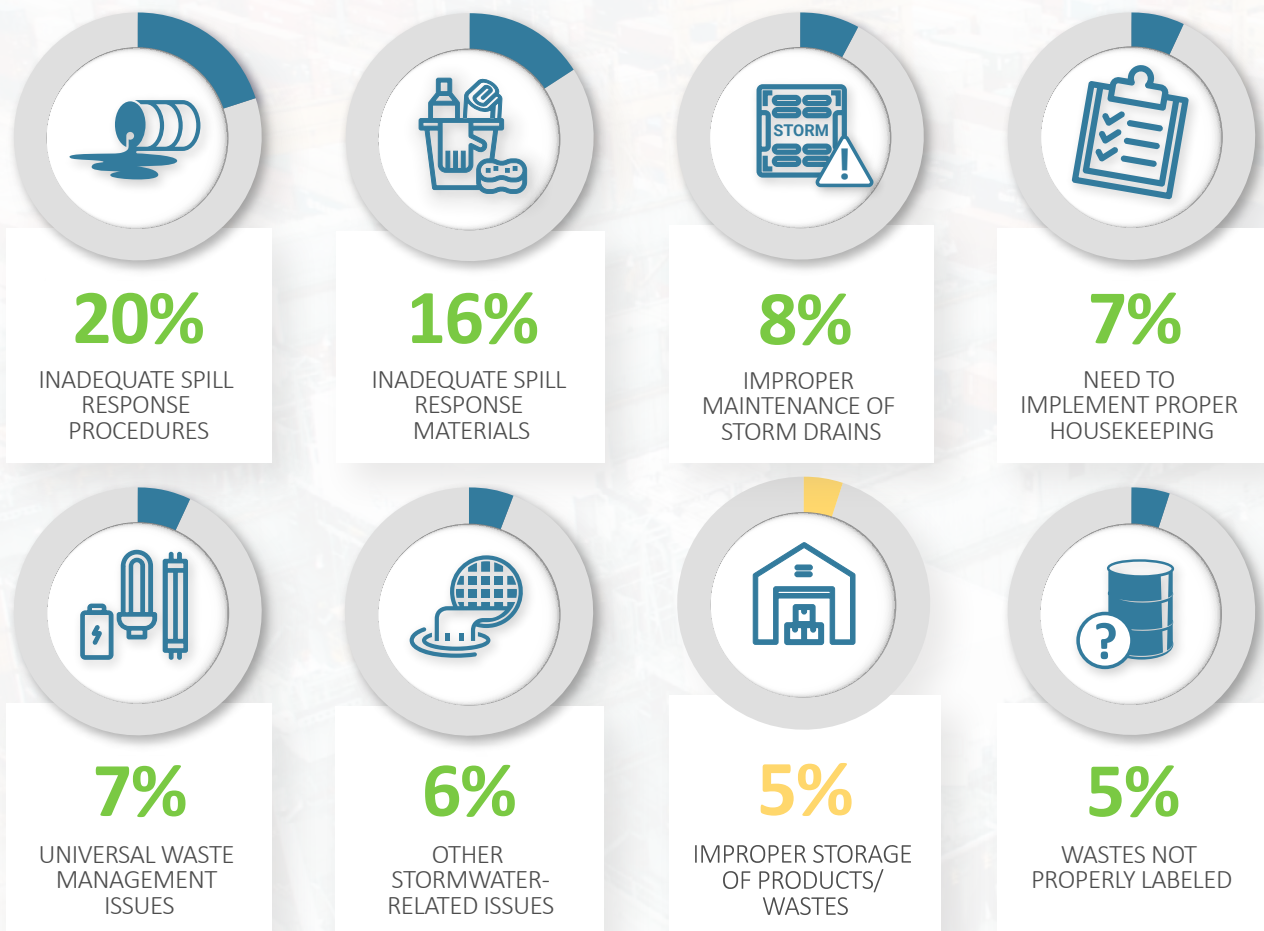
ISSUES AND RESOLUTION

In the 2017–2019 biennium, PPA specialists made 7,602 visits to small businesses. Businesses with complex or high-priority issues received one or more follow-up visits from specialists. Specialists found a total of 4,661 issues. By the end of the biennium, they helped resolve 85 percent (3,963) of the issues.

The eight most common issues that specialists found during visits make up about 74 percent of all issues.

Ten potential issues on the specialist's checklist are considered high priority because, if left unresolved, they directly impact human or environmental health. Fortunately, only one high-priority issue (improper storage of products/wastes) was among the eight most common issues found. In total, the most common high-priority issues found represented 20 percent of all issues found during business visits this biennium.

THE MOST COMMON ISSUES FOUND



2017–2019 BIENNIUM VISIT SUMMARY



Visits performed: 7,602



Issues found: 4,661



Issues resolved: 3,963

85%

THE MOST COMMON HIGH PRIORITY ISSUES FOUND



5%

IMPROPER STORAGE
OF PRODUCTS/
WASTES



4%

WASTES NOT
PROPERLY
DISPOSED OF



4%

IMPROPERLY
STORED
DANGEROUS WASTE



4%

DISCHARGE OF PROCESS
WASTEWATERS TO
STORM DRAINS



3%

IMPROPERLY STORED
CONTAINERIZED
MATERIALS



SPILL KITS AND SECONDARY CONTAINMENT

Partners also help businesses with best management practices to avoid and respond to spills.

During the 2017–2019 biennium, partner jurisdictions distributed over 600 spill kits to businesses. Once the businesses complete a spill response plan, specialists review the plan with the business and set up a date and time to drop off the spills kit. The partnership also purchased supplies including 165 waste drum covers, 75 drum funnels with lids, and 108 secondary containment pallets to assist businesses in reducing the likelihood of a spill.

TRAINING FOR PPA SPECIALISTS

Specialists must be aware of the regulatory requirements for handling many types of wastes and processes while also understanding best management practices that apply to a wide range of businesses.

To support new and veteran PPA specialists, Ecology provides regular trainings.

“ I have visited businesses multiple years after our initial visit that continue to practice and train new employees on the best management practices we shared with them.

—City of Port Angeles

”

Semiannual in-person trainings give specialists a chance to learn about best management practices and regulatory updates. Ecology also facilitates eight webinars per year. These webinars keep specialists up to date on changing regulations and introduce them to new topics. Partner jurisdictions or other agencies will often give presentations during the webinars, which allow for a wide array of learning topics and points of view.

With the help of experienced specialists from partner jurisdictions, Ecology trains new specialists annually. All specialists have access to Ecology staff expertise, leading to a broad system of information exchange and an enhanced level of assistance to businesses. Additionally, all specialists have access to all other specialists from around the state. This allows for collaboration across the partnership between new and experienced specialists. No specialists are on their own; we are one big team!

“ ***This partnership has helped me become a more knowledgeable inspector and provide the best technical assistance and education to the citizens in my jurisdiction.*** ”

—King County

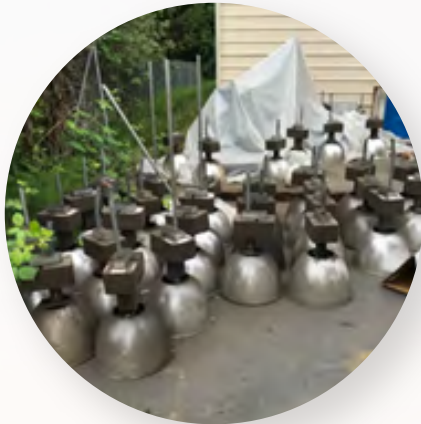


PARTNER SUCCESS STORIES



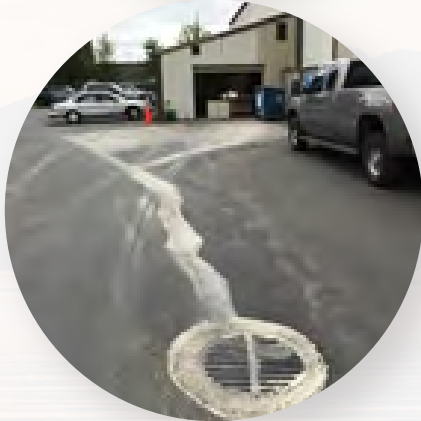
CLARK COUNTY PUBLIC WORKS

Specialists from Clark County Public Works visited a local metal fabrication business that had recently expanded to a new location. The new location had several waste management and stormwater issues left by the previous tenants.



Some of the issues included:

- Light ballasts stored outside.
- A leaking compressor shed.
- Twenty-four drums of unknown waste stored outside (two of which ended up being designated as dangerous waste).



The new business also generated their own waste issues after the move. Stormwater and pollutants flowed from the facility straight into a nearby storm drain. Our specialists explained that they needed a General Industrial Stormwater Permit.



The visit by the Clark County Public Works specialists led to:

- The proper recycling of lighting ballasts and lamps.
- The removal and replacement of the leaking compressor shed.
- The designation of all 24 drums of waste.
- The proper facility permitting as recommended by the specialists.

Since only two of the twenty-four drums were designated as dangerous waste, the business was able to resolve all issues while still maintaining their small quantity generator status.

KING COUNTY WATER AND LAND RESOURCES

King County specialists visited a marina with a boat washing area. This marina captures water from boat washing in a drain and vault system that leads to aboveground tanks. Once the tanks fill up, the facility ships the wash water off site.



During King County's visit to the facility, specialists observed some wash water entering a nearby stormwater drain that was not connected to the contained washing area. That drain led directly into Puget Sound.



Specialists directed the marina to stop discharging wash water into the storm drain immediately and come up with a permanent solution. As a temporary solution, the facility added sand bags next to the storm drain to divert wash water away from the drain.



As a permanent solution, the facility installed a concrete berm around three sides of the storm drain. The facility also stenciled several storm drain labels next to the drain to educate people that only rain can go down the drain.

SPOKANE REGIONAL HEALTH DISTRICT

In the last biennium, specialists from the Spokane Regional Health District focused on multi-family housing complexes in Spokane County. Specialists provided handouts and brochures to property managers about how to manage their waste.

Specialists educated property managers and maintenance staff about where to find resources online. Specialists were also able to spend time educating staff on good housekeeping practices for their maintenance and storage areas.

Storage areas often had poor housekeeping practices that resulted in limited aisle space and tripping hazards. Another common issue was chemical storage. Incompatible chemicals were stored on the same shelf, increasing the risk of reaction.

After the specialists' visits, maintenance staff successfully removed tripping hazards and chemical risks from their storage areas.



TACOMA-PIERCE COUNTY HEALTH

During a high school visit, Tacoma-Pierce County Health Department specialists observed several issues:

- No spill response kits.
- Scrap steel stored outside without cover.
- Open 30-gallon liquid chlorine and muriatic acid drums.
- A lack of knowledge on where floor and pool drains discharge.

With specialists' help, the facility addressed all issues by:

- Assembling spill kits and placing them in the custodial closets of each building along with a spill plan.
- Obtaining covered scrap metal bins for the shop building.
- Replacing 30-gallon chlorine drums with easier to handle and maintain 15-gallon drums.
- Replacing muriatic acid with CO2 for pH control.
- Confirming all drainpipes in the pool building connect to sewer.



WHATCOM COUNTY HEALTH

Whatcom County specialists visited a Ferndale business specializing in prefabricated home construction.

Over many years, the facility accumulated several containers of old and unused paint. Whatcom County Health Department informed the business about the hazards of storing old paint on site.



They also recommended the Whatcom County Disposal of Toxics facility as a local option for proper paint disposal. Over the next few months, the business organized, sorted, and labeled all of its old paint containers.



Then they brought the old and unused paint to the Whatcom County Disposal of Toxics facility in batches; eventually, they disposed of all of their old and unused paint this way. Whatcom County specialists then did a follow-up visit to the facility to ensure that the paint was disposed of properly.





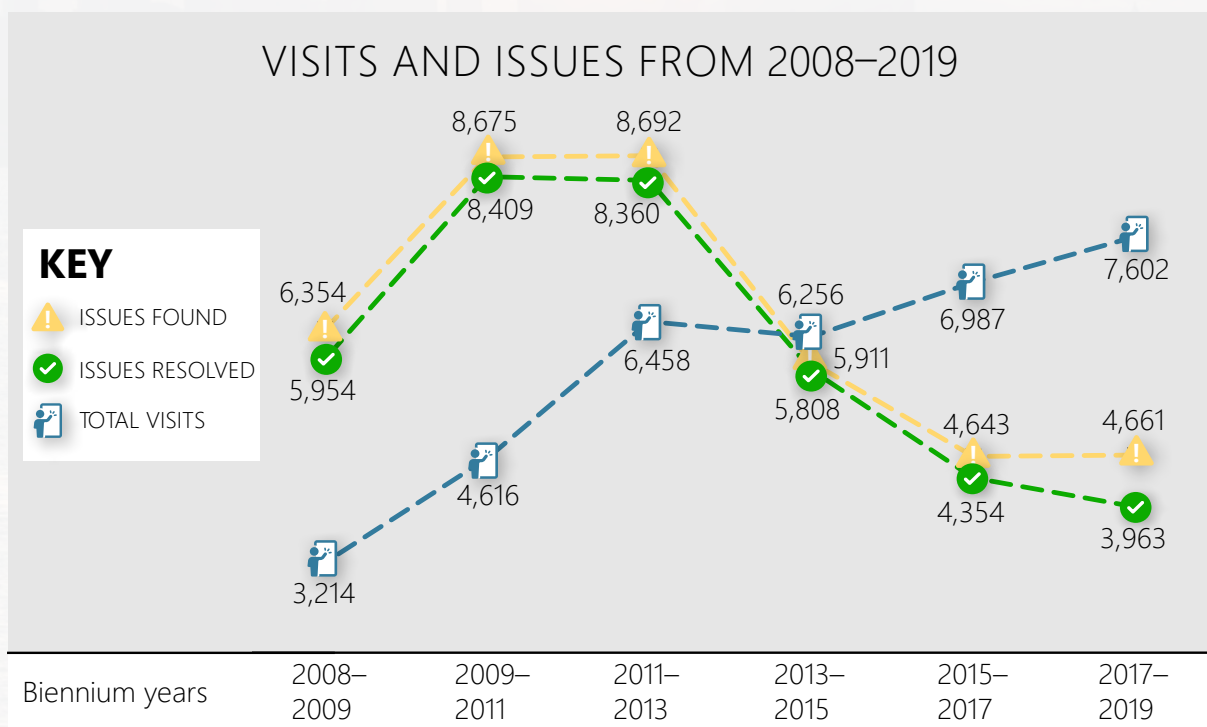
LOOKING FORWARD

PROGRAM HISTORY

Since its inception in 2007, the Pollution Prevention Assistance partnership continues to grow. The number of local jurisdictions in the partnership has increased from 13 to 21, and the number of business visits completed steadily increases each biennium.

During the first several years, the number of issues found by our local partners climbed since many of the businesses had never had this type of assistance with managing their waste or implementing environmental protections. On return visits, partners typically found a decrease in the number of issues, which is reflected by an overall decrease in the number of issues found in the last several biennia. The significant decrease in the number of issues demonstrates the success of these visits and shows that our face-to-face educational approach leads businesses to adopt lasting changes.

Funding for the partnership increased two times over the last 12 years: once in 2013 and again in 2015. In the 2013–2015 biennium, federal funding from the Environmental Protection Agency’s (EPA) National Estuary Program allowed us to significantly increase the number of contracted partners in the Puget Sound region. Thanks to new legislative funding for the 2015–2017 biennium, we added local partners in Clark County. Our funding from EPA ended in 2019, creating a need for increased state funding to sustain the partnership into the future.

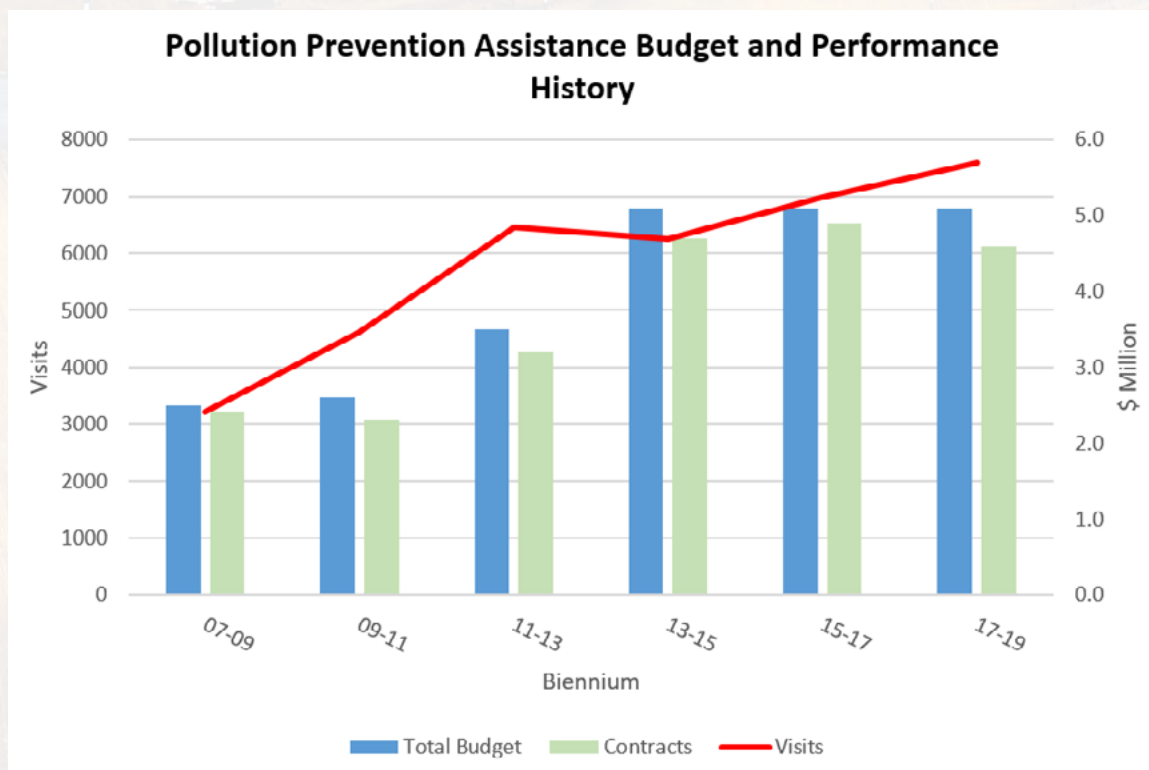


PROGRAM FUTURE

For the 2019–2021 biennium, new legislative funding will launch Ecology’s Product Replacement Program. This program seeks to remove the worst chemicals (identified by the Legislature or detailed in Ecology Chemical Action Plans) from products and technologies used in commerce. The program will help businesses with the cost of removing the chemical(s) and help them implement safer alternatives (when possible). **The PPA partnership will be instrumental in implementing this program. We will work directly with businesses interested in switching to new processes or technologies.**

We want the partnership to continue growing so that more Washington businesses have access to free technical assistance. **During our 2019–2021 request for applications, four new jurisdictions sought funding. Due to the decrease in funding, we could not bring them into the partnership.** In 2020, we plan to reach out to additional cities and counties (especially east of the Cascades) that may benefit from joining the partnership. We will assess their interest in providing technical assistance to the businesses in their community.

With over ten years of data about the partnership, we can confidently say that PPA improves business practices and safety procedures while reducing the number of environmental issues found during site visits. With the help of additional funding, we hope to expand the program to new regions and continue our current trend of decreasing environmental issues found at businesses.







To request materials in a format for the visually impaired, call the Hazardous Waste and Toxics Reduction Program at 360-407-6700. Persons with impaired hearing may call Washington Relay Service at 711. Persons with a speech disability may call TTY at 877-833-6341.