

Seattle Public Utilities Midway Landfill Site



Location of future Sound Transit light rail extension and I-5 lane widening

Comments accepted:

January 27 - February 25, 2020

Submit comments:

Online at:

<http://bit.ly/Ecology-MidwayLandfill-Comments>

Or by mail to:

Mark Adams, Site Manager
 WA Department of Ecology
 3190 160th Avenue SE
 Bellevue, WA 98008-5452
 Phone: (425) 649-7107
 Email: mark.adams@ecy.wa.gov

Site info:

<http://bit.ly/Ecology-MidwayLandfill>

Facility Site ID: # 2043
 Site Cleanup ID: 4729

Document review locations:

Woodmont Public Library
 26809 Pacific Hwy S
 Des Moines, WA 98198
 (253) 839-0121

Ecology-Bellevue Office
 3190 160th Avenue SE
 Bellevue, WA 98008-5452
 By appointment, call 425-649-7190

Documents ready for public review and comment

The Washington State Department of Ecology (Ecology) requests your input on documents that would allow for development actions at the Midway Landfill Site (Site). Seattle Public Utilities (City of Seattle) owns and operates the Site and completed cleanup actions in 1992. New transportation development actions would include construction of Sound Transit light rail facilities and Washington State Department of Transportation (WSDOT) highway widening adjacent to Interstate 5 (I-5) on the eastern boundary of the Site. Ecology requires that these actions protect human health and the environment during and after development.

The following documents are available for review and comment:

- **Consent Decree Amendment:** update to the 2006 legal agreement between the City of Seattle and Ecology.
- **Prospective Purchaser Consent Decree:** new legal agreement between Sound Transit and Ecology.
- **Cleanup Action Plan Amendment:** describes actions required by Ecology to maintain the integrity of remedial elements during and after proposed development at the Site.
- **Public Participation Plan:** document that explains how people can participate in the cleanup process.

Public meeting and hearing

We will hold a public meeting and hearing to provide more information, answer questions, and collect comments.

Tuesday, February 11, 2020
7 - 9 p.m.
Des Moines Elementary School
23801 16th Avenue South
Des Moines, WA

Interpreter services will be available in Spanish, Korean, and Somali.

Toxics Cleanup Program

Site location and background

The Site occupies 60 acres in Kent, Washington, between I-5 and Highway 99, and between S. 252nd Street and S. 246th Street. The Site is owned and maintained by the City of Seattle – Seattle Public Utilities. A gravel pit operated at the Site from 1945 to 1966; the City of Seattle used it as a landfill until 1983. Remediation of the Site was completed in 2000.

Land use in the vicinity consists primarily of residential areas and commercial activities. Light industry and manufacturing facilities border Highway 99 in the area.

Previous cleanup work

In 1983, gas and groundwater testing revealed potentially combustible methane gas and contaminated groundwater traveling from the closed landfill. As a result, cleanup work began in 1985 under the direction of Ecology.

In May 1986, the Site was listed by the U.S. Environmental Protection Agency (EPA) as a National Superfund site.

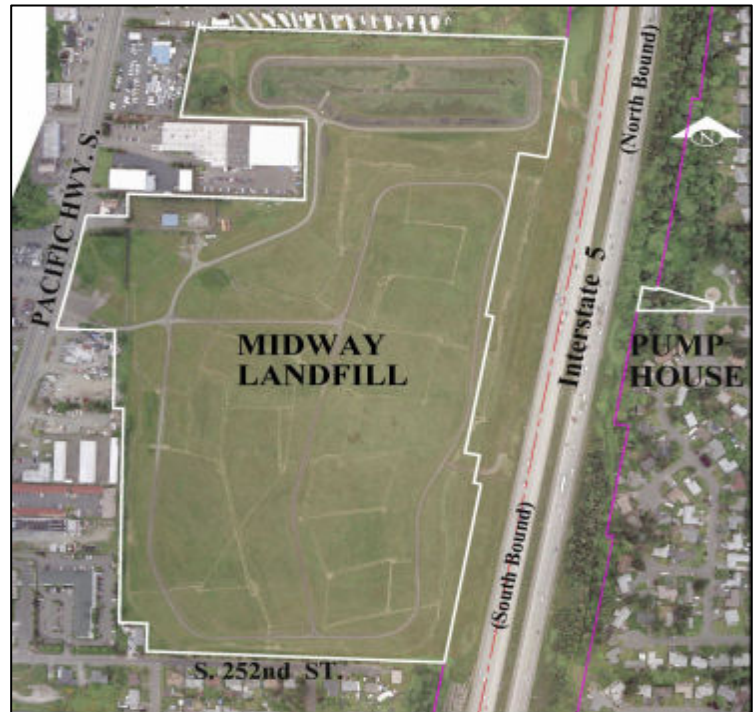
In September 1988, the City of Seattle and Ecology prepared a Remedial Investigation and Feasibility Study to describe contamination found at the Site, evaluate cleanup alternatives, and identify a preferred cleanup alternative.

In 1990, the City of Seattle and Ecology entered into a Consent Decree defining remedial actions that would lead to protection of public health and the environment.

In 1992, the City of Seattle completed these remedial actions:

- Covered the landfill with an engineered, multilayered waterproof cap with a top layer of grass.
- Installed a gas extraction system to control methane.
- Controlled surface water.
- Fenced the landfill to limit access to the Site.

The City of Seattle maintains these protective features and monitors groundwater quality and landfill gas at the Site.



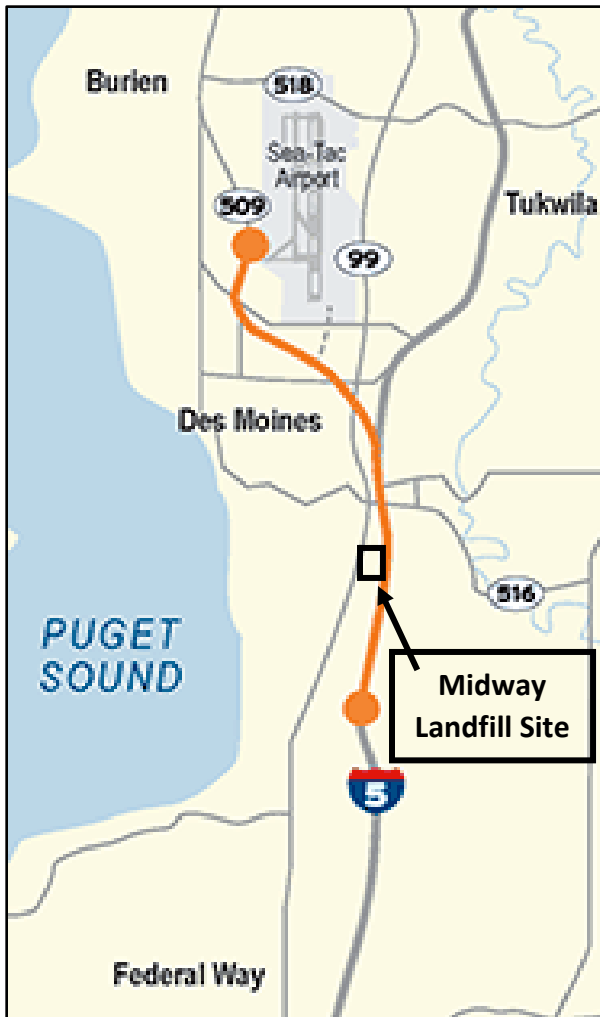
Midway Landfill site location



Midway Landfill grass cover

Proposed development actions

Two upcoming WSDOT and Sound Transit I-5 Corridor transportation projects adjoin the Midway Landfill. Only smaller portions of these projects will occur at the Site. See figures and webpage links below for project details. The WSDOT State Route (SR) 509 Completion Project will add additional lanes to I-5, and the Sound Transit Federal Way Link Extension (FWLE) will extend light rail from the existing Angle Lake Station at S 200th Street to the Federal Way Transit Center. The two projects are adjacent to the Site, and the FWLE will be constructed in the WSDOT I-5 right-of-way (ROW) on the east edge of the Site (see Site Plan on page 4).



WSDOT SR 509 Completion Project
<https://www.wsdot.wa.gov/Projects/SR509/completion>



Sound Transit Federal Way Link Extension
<https://www.soundtransit.org/system-expansion/federal-way-link-extension>

There is landfill material in the WSDOT ROW, and the City of Seattle will remove material as necessary to accommodate the WSDOT project. The City of Seattle, WSDOT, and Sound Transit believe that there are advantages to implementing a combined project that meets the needs of all three agencies and provides best value to the public. This scope of combined work is referred to as the “FWLE Midway Project.” The FWLE Midway Project contractor will remove enough landfill material for both the WSDOT’s lane widening work and for constructing a ground-level (at-grade) alignment for Sound Transit’s light rail.

Federal Way Link Extension (FWLE) Midway Project Area at the Midway Landfill Site



Toxics Cleanup Program

Construction and Cleanup Action Plan amendments

Construction will impact the Midway Landfill Site's:

- Landfill cap.
- Gas collection infrastructure.
- Surface water management system monitoring network on the eastern border of the Site.

The Cleanup Action Plan Amendment defines requirements for:

- Removal and disposal of waste.
- Protection and repair of the disturbed landfill cap and infrastructure systems.
- Approval and documentation of the work.



Midway Landfill and I-5 facing south

Environmental Impact Statement

State Environmental Policy Act (SEPA) requirements for this project were met in the more detailed Environmental Impact Statements (EIS) completed by Sound Transit and WSDOT. See webpage links on page 3 for agency documents.

Future Land Ownership

Following completion of the FWLE Midway Project, the City of Seattle, Sound Transit, and WSDOT will make some changes in property ownership. The Sound Transit FWLE rail alignment property currently owned by WSDOT will become owned by Sound Transit.

The new Prospective Purchaser Consent Decree between Ecology and Sound Transit defines requirements for Sound Transit's long-term maintenance of their portion of the Site to ensure continued environmental protection.

The Consent Decree Amendment between Ecology and the City of Seattle and the new Prospective Purchaser Consent Decree between Ecology and Sound Transit will all ensure implementation of the required actions defined in the Cleanup Action Plan Amendment.

What happens next?

- **January 27 – February 25, 2020:** 30-day public comment period.
- **February 11, 2020:** Public meeting and hearing.
- **Early 2020:** Ecology will review comments received, and respond accordingly.
- **2020:** Construction of FWLE Midway project.

Seattle Public Utilities Midway Landfill Site-Translations

Comentarios se aceptarán:

27 de enero – 25 de febrero del 2020

Faalooyinka waxaa la aqbeley:

Janaayo 27 – Febraayo 25, 2020

의견 제출 기간:

2020 년 1 월 27 일 - 2020 년 2 월 25 일

Para someter comentarios, Ku soo gudbi faalooyinka, 의견 제출 방식:

En línea, Online ahaan, 관련 업 제출

<http://bit.ly/Ecology-MidwayLandfill-Comments>

O por correo, Ama boosta, 편지 로 제출:

Mark Adams, Site Manager
WA Department of Ecology
3190 160th Avenue SE
Bellevue, WA 98008-5452
(425) 649-7107
mark.adams@ecy.wa.gov

Información del sitio,
Macluumaadka goobta,

관련 오염지 정보:

<http://bit.ly/Ecology-MidwayLandfill>

Facility Site ID: # 2043

Site Cleanup ID: 4729

Dónde revisar documentos,
Waraaqaha naqdinta goobaha,

검토 서류 보관장소

Biblioteca Pública de Woodmont
Woodmont Public Library
Woodmont 공공 시립 도서관
26809 Pacific Hwy S
Des Moines, WA 98198
(253) 839-0121

Oficina de Ecología – Bellevue
Ecology-Bellevue Office
환경부 Bellevue 사무실
3190 160th Avenue SE
Bellevue, WA 98008-5452
By appointment, call 360-649-7190

En español: Sitio de limpieza Seattle Public Utilities Midway Landfill

Si desea leer esta hoja informativa en español y aprender más acerca del proyecto:

- Obtenga una copia digital traducida en línea en: <http://bit.ly/Ecology-MidwayLandfill>
- Visite la Biblioteca Pública de Woodmont (dirección en la columna a la izquierda de esta página)
- Atienda nuestra reunión y audiencia pública:
Martes 11 de febrero del 2020, 7 - 9 p.m.
Des Moines Elementary School
23801 16th Avenue South, Des Moines, WA

Somali: Goobta Midway Landfill ee Seattle Public Utilities

Hadii aad doonayso inaad akhrido xaashidan macluumaadka ah oo Somali ah iyo inaad macluumaad dheeraad ah ka ogaato mashruuca:

- Waxaad soo dejisataa nuqulka dhigitaal ah ee turjuban online ahaan <http://bit.ly/Ecology-MidwayLandfill>
- Booqo Woodmont Public Library (cinwaankiisu ku qoran yahay dhanka bidix)
- Waxaan kasoo qayb gashaa kulamada iyo dhagaysiga shacabka:
Talaado, Febraayo 11, 2020, 7 - 9 habeenimo.
Des Moines Elementary School
23801 16th Avenue South, Des Moines, WA

한국어: 시애틀 전력회사 소유 Midway 쓰레기 매립장

관련 사업 혹은 자료 요약본을 읽고 싶으면:

- 아래 웹을 통해 한국어 번역본을 입수: <http://bit.ly/Ecology-MidwayLandfill>
- 공공 시립도서관 방문 (왼쪽 주소 참조):
- 다음 장소와 시간의 공청회에 참석:

화요일, 2020 년 2 월 11 일 저녁 7 시 부터 - 9 시
Des Moines Elementary School
23801 16th Avenue South, Des Moines, WA

This page intentionally left blank.

