



DEPARTMENT OF  
**ECOLOGY**  
State of Washington

# **Public Participation Plan**

**Boeing Everett**  
**3003 West Casino Road**  
**Everett, WA 98204**

---

*Facility Site ID: 2703*

*Cleanup Site ID: 4534*

*February 2021*

Publication 21-04-008

# Publication and Contact Information

This plan is available on the Department of Ecology's [Boeing Everett website](#).<sup>1</sup>

For more information, contact:

Northwest Regional Office

3190 160<sup>th</sup> Avenue SE

Bellevue, WA 98008-5452

425-649-7253 (Paul Bianco, *Site Manager*)

425-649-7286 (Janelle Anderson, *Public Outreach Coordinator*)

Washington State Department of Ecology — [www.ecology.wa.gov](http://www.ecology.wa.gov)

- Headquarters, Olympia: 360-407-6000
- Northwest Regional Office, Bellevue: 425-649-7000
- Southwest Regional Office, Olympia: 360-407-6300
- Central Regional Office, Union Gap: 509-575-2490
- Eastern Regional Office, Spokane: 509-329-3400

## Español

El Departamento de Ecología está anunciando el periodo de comentario público relacionado a la limpieza ambiental del sitio Boeing Everett. Para obtener este documento, o más información sobre este sitio, en español, favor de comunicarse con Gretchen Newman al 360-407-6097 o al correo electrónico: [preguntas@ecy.wa.gov](mailto:preguntas@ecy.wa.gov).

## ADA Accessibility

The Department of Ecology is committed to providing people with disabilities access to information and services by meeting or exceeding the requirements of the Americans with Disabilities Act (ADA), Section 504 and 508 of the Rehabilitation Act, and Washington State Policy #188.

To request an ADA accommodation, contact Ecology by phone at 360-407-6700 or email at [hwtrpubs@ecy.wa.gov](mailto:hwtrpubs@ecy.wa.gov). For Washington Relay Service or TTY call 711 or 877-833-6341. Visit [Ecology's website](#)<sup>2</sup> for more information.

---

<sup>1</sup> [www.ecology.wa.gov/BoeingEverett](http://www.ecology.wa.gov/BoeingEverett)

<sup>2</sup> [www.ecology.wa.gov/accessibility](http://www.ecology.wa.gov/accessibility)

# **Public Participation Plan**

---

## **Boeing Everett**

Hazardous Waste and Toxics Reduction Program  
Northwest Region  
Washington State Department of Ecology  
3190 160<sup>th</sup> Avenue SE, Bellevue, Washington

*This page is purposely left blank*

# Table of Contents

Publication and Contact Information .....	i
Español .....	i
ADA Accessibility .....	i
Public Involvement in Contamination Cleanup .....	1
Public participation grants .....	1
Site contacts .....	2
Ecology.....	2
Boeing Everett .....	2
State and Federal Cleanup Laws.....	2
Model Toxics Control Act (MTCA).....	3
RCRA and hazardous waste regulations .....	3
State Environmental Policy Act.....	5
Site History .....	5
Land use .....	5
How the site became contaminated .....	6
Contamination .....	7
Cleanup plans.....	10
Area Community.....	11
Geography.....	11
Demographics.....	12
People of color and minority populations .....	13
English language proficiency .....	14
Outreach activities and language access.....	14
Public Participation Activities .....	15
How we share information with the community .....	15
Tribal communication .....	15
Postal mailing list .....	16
Site Register .....	16
Newspaper display ads or legal notices .....	16
Email list for TSD facility updates.....	17
Document repositories .....	17
Signs around the cleanup site.....	17
How to share information with Ecology .....	17
Public comment periods .....	18
Public events.....	18
Americans with Disabilities Act .....	19
Plan Amendments.....	19
List of Abbreviations and Acronyms .....	20

## Public Involvement in Contamination Cleanup

The Washington State Department of Ecology (Ecology, we, our) developed this public participation plan (plan) for cleanup actions at the Boeing Everett Plant. The purpose of the plan is to encourage meaningful public involvement during cleanup.

This plan describes how we will tell the public about contamination and cleanup options during the cleanup. We encourage you to learn about and get involved in decision-making. This plan tells you how and when you can get involved during the investigation and cleanup of contamination.

This plan covers the remedial investigation, feasibility studies, our selected cleanup remedies, and the cleanup implementation plans at the Boeing Everett site in Snohomish County.

### Public participation grants

Neighborhood committees, non-profits, and other groups interested in the site can apply for public participation grants. Grant funds can be used to:

- Hire an expert to help explain technical information.<sup>3</sup>
- Conduct activities that increase your understanding of, and participation in, the cleanup process.

For more information about public participation grants, please contact Lynn Gooding at 360-407-6062 or [lynn.gooding@ecy.wa.gov](mailto:lynn.gooding@ecy.wa.gov). You may also visit the [Public Participation Grant website](#).<sup>4</sup>

---

<sup>3</sup> Ecology currently does not have a citizen technical advisor to provide citizens with technical assistance on issues related to site investigation and cleanup.

<sup>4</sup> <https://ecology.wa.gov/ppgrants>

## Site contacts

To be included in the official site record, comments about the cleanup must be submitted during comment periods. Questions, informal comments, or information about the site's history are welcome anytime.

## Ecology

Paul Bianco, *Site Manager*

Washington State Department of Ecology

3190 160<sup>th</sup> Avenue SE

Bellevue, WA 98008-5452

425-649-7253

[paul.bianco@ecy.wa.gov](mailto:paul.bianco@ecy.wa.gov)

Janelle Anderson, *Community Outreach*

Washington State Department of Ecology

3190 160th Ave. SE

Bellevue, WA 98008

425-301-6454

[janelle.anderson@ecy.wa.gov](mailto:janelle.anderson@ecy.wa.gov)

## State and Federal Cleanup Laws

We use the Model Toxics Control Act (MTCA) and its regulations for cleanup activities.

This public participation plan is required under MTCA. MTCA guides contaminated site cleanup in Washington state and makes sure that the cleanup protects human health and the environment.

---

## **Model Toxics Control Act (MTCA)**

In 1988, MTCA began as a grassroots citizen's initiative to clean up contaminated sites in Washington. It became law in 1989. Under MTCA, current or past property owners or operators have to clean up contamination on or coming from their property so it is safe for human health and the environment.

We use MTCA to oversee cleanups in our state. MTCA is in [Chapter 173-340 Washington Administrative Code \(WAC\)](#).<sup>5</sup> We investigate reports of property contamination. If there is a threat to human health or the environment, the property is placed on the Hazardous Sites List and the cleanup process begins.

Public participation is an important part of MTCA cleanup. Outreach needs are determined for each cleanup based on the level of public interest and the amount of risk caused by the contamination. Anyone interested can get involved by commenting on the cleanup process.

Under MTCA, the cleanup process generally includes five phases. Each phase includes a chance for the public to review and comment on cleanup documents.

## **RCRA and hazardous waste regulations**

There are federal and state rules for hazardous waste management. Congress enacted the Resource Conservation and Recovery Act (RCRA) in 1980 to ensure waste is safely managed and disposed. RCRA was amended in 1984 to expand its scope and requirements.

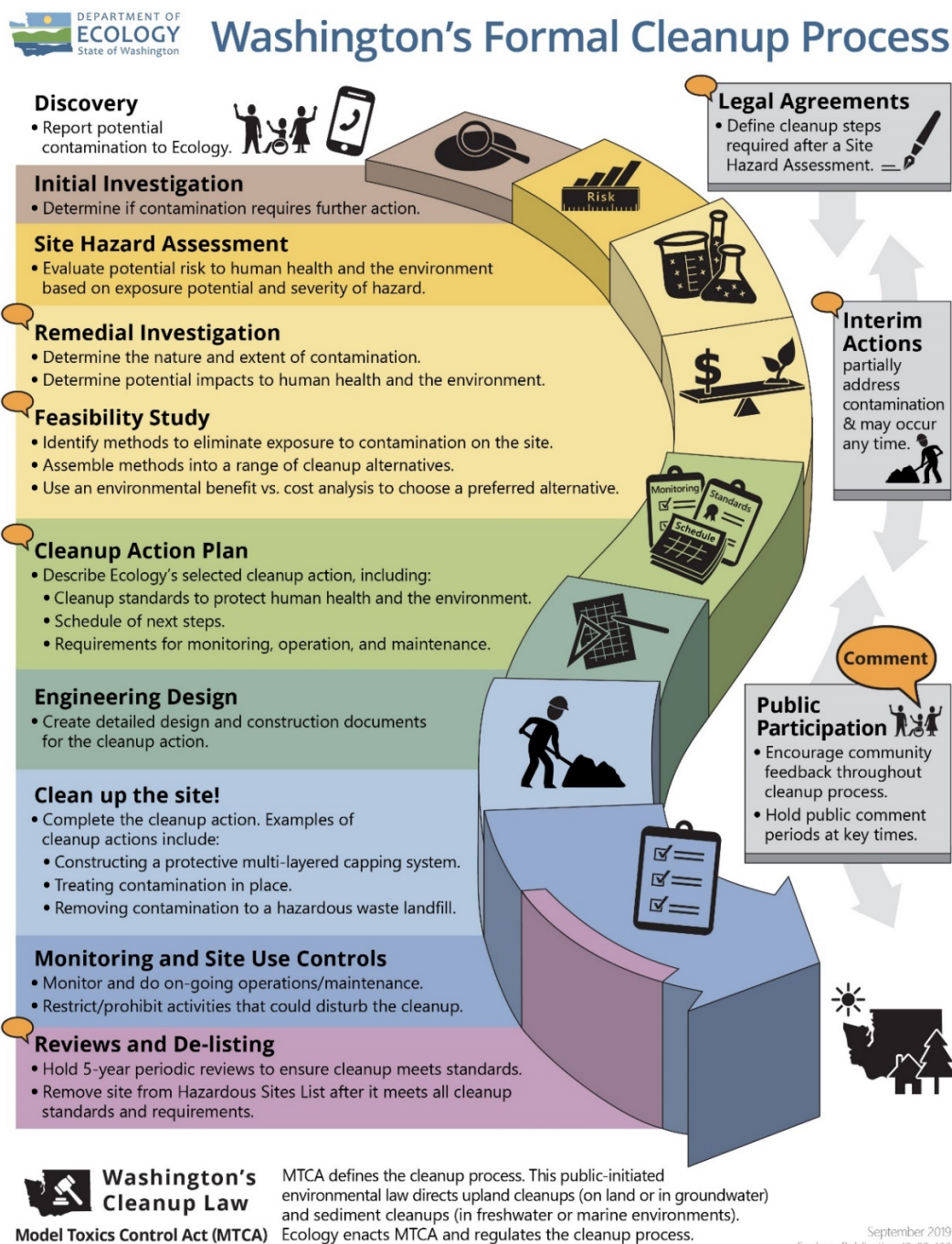
RCRA's goals are to:

- Protect human health and the environment.
- Reduce waste and conserve energy and natural resources.
- Reduce or eliminate generation of hazardous waste.

---

<sup>5</sup> <https://apps.ecology.wa.gov/publications/publications/9406.pdf>





**Figure 1: [Washington's Formal Cleanup Process Infographic](#)<sup>6</sup>**

**[Read a Plain Text version of Figure 2](#)<sup>7</sup>**

<sup>6</sup> <https://apps.ecology.wa.gov/publications/documents/1909166.pdf>

<sup>7</sup> <https://apps.ecology.wa.gov/publications/parts/1909166part2.pdf>

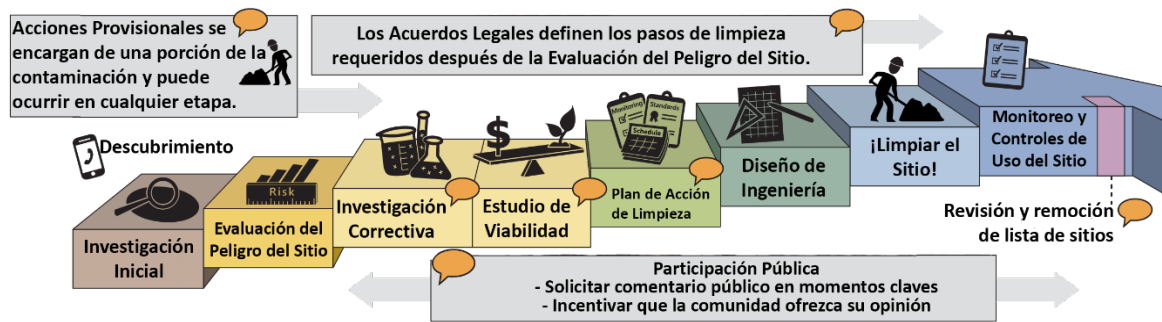


Figure 2: Formal Cleanup Process Infographic in Spanish

## State Environmental Policy Act

We follow the State Environmental Policy Act (SEPA) during site cleanups. SEPA's purpose is to find and evaluate large, negative environmental impacts that could result from a proposed action. For permit renewals, there is no SEPA determination because permit renewals are administrative (paperwork) processes.

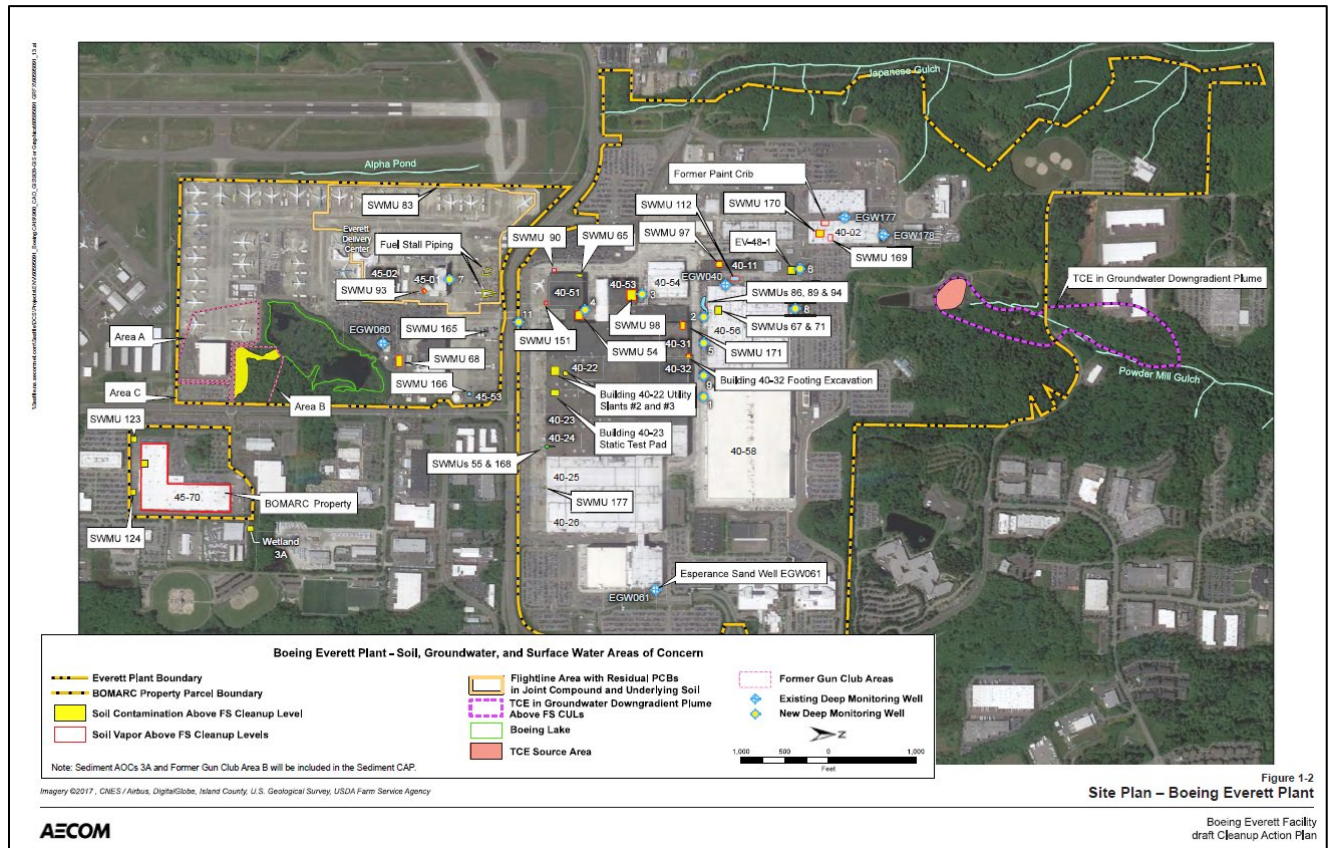
## Site History

### Land use

Since 1967, the Boeing Company (Boeing) has owned and operated the Boeing Everett Plant, at 3003 West Casino Road. The plant produces commercial aircraft models 747, 767, 777, and 787.

In order to store dangerous waste at a site for longer than 90 days, facilities must have a RCRA permit that is issued in two parts, Part A and Part B. As the U.S. Environmental Protection Agency (EPA) required, Boeing submitted a Part A Permit in 1980 because it wanted to store its waste longer than 90 days. After the Part A application is done, a facility has **interim status**. Boeing currently has interim status.

Boeing submitted a RCRA Part B Permit Application for dangerous waste storage, but withdrew it in 2002 because it decided not to store dangerous waste longer than 90 days. However, we will not end Boeing Everett's RCRA interim status until all site cleanup is complete and the Boeing Everett Plant meets RCRA Corrective Action cleanup requirements.



**Figure 3: Boeing Everett Plant—soil, groundwater, and surface water areas of concern, noted as SWMUs (solid waste management units).**

## How the site became contaminated

During past aircraft production, Boeing released hazardous substances and wastes on site. The releases got into the environment from leaking underground storage tanks, leaking underground piping, a former gun shooting range, spills, site stormwater discharging to surface water, and other manufacturing practices.

The primary contaminants on the site are:

- Trichloroethylene (a cleaning and degreasing solvent)
- Xylene (a cleaning solvent)
- Toluene (a cleaning solvent)

- Ethylbenzene (a cleaning solvent)
- Jet fuel
- Lead (a toxic metal)
- Arsenic (a toxic metal)
- Hydraulic fluid
- Oil, gasoline and diesel
- Polyaromatic hydrocarbons (PAHs) (solvent chemical known to cause cancer)
- Polychlorinated Biphenyls (PCBs) (long-lasting, hazardous liquid used to insulate electrical equipment)

State and federal laws require that Boeing clean up contamination on their own property and on affected neighboring properties. The cleanup protects human health and the environment from the contamination (WAC 173-303-646).

## **Contamination**

The Remedial Investigation (RI) evaluated the nature and extent of soil and groundwater contamination at the site, and potential risks to human health and the environment. During the RI, Boeing sampled soil, groundwater, surface water, indoor air, soil gas, sediment, and stormwater to find the contamination.

Contaminants found on the Boeing property were above state cleanup levels. However, as long as the facility stays an industrial property, these chemicals do not present a risk to human health.

The primary contaminants detected in groundwater north of the Boeing property and in Powder Mill Creek are Trichloroethene (TCE) and TCE breakdown products. TCE, a degreasing solvent once commonly used to clean metal parts, is a volatile organic compound (VOC) that evaporates easily into the air and is slightly soluble in water. Under certain conditions, in water it slowly breaks down into other chemicals, such as



vinyl chloride. If TCE gets into groundwater, it dissolves and then moves with the natural flow of the water. We have groundwater cleanup standards for TCE and its breakdown products.

Residents receive drinking water from wells outside of the site boundary. Drinking water is not impacted by the contaminated groundwater.

TCE-contaminated groundwater flows directly into Powder Mill Creek. For safety reasons, we want people and animals to stay on the walking trails near Powder Mill Creek and **avoid contact with the creek water**. TCE-contaminated groundwater seeps from the creek banks, drains along the creek shore, and flows into the creek. The City of Everett has posted signs advising walkers to stay on the trails. Fencing and signs prevent creek access on Boeing property.

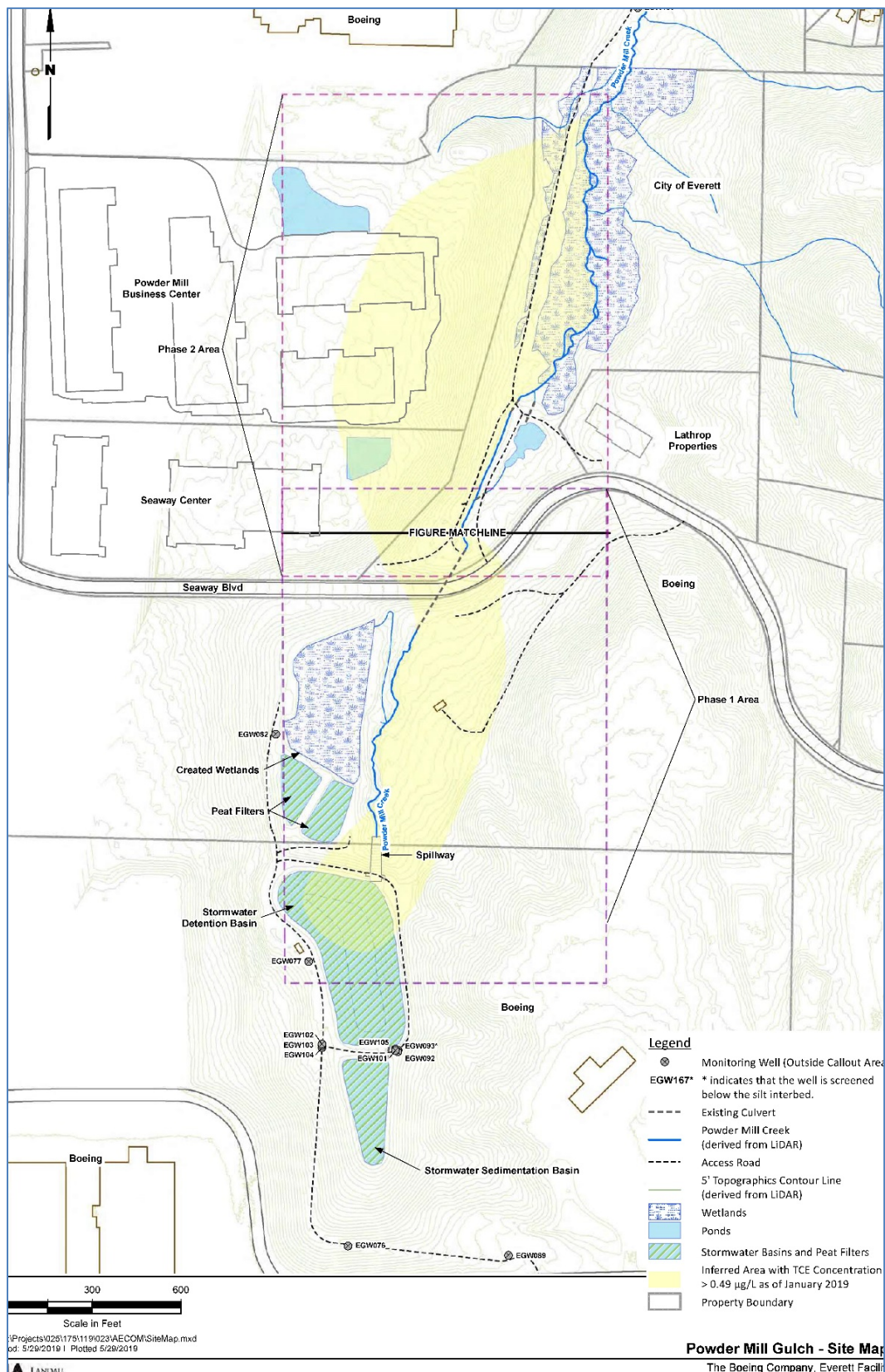


Figure 4: Boeing Everett Powder Mill Gulch groundwater contamination map

---

## Cleanup plans

Boeing must clean up contamination from its Everett plant, including where the contamination left its property. We apply both RCRA and the Model Toxics Control Act (MTCA) regulations to clean up hazardous waste sites. The cleanup protects human health and the environment from releases of dangerous wastes and chemicals.

We modified the Agreed Order five times to authorize or require interim actions to protect human health and the environment. These interim actions reduced threats to human health or the environment by reducing exposure or correcting a problem that could become worse or cost more if action was delayed. The Agreed Order was modified in 2004, 2006, 2008, 2011, and 2014. Details about these interim actions can be found on our [Boeing Everett webpage](#).<sup>8</sup>

On February 25, 2016, Ecology and Boeing attended a Boulevard Bluffs Neighborhood meeting. Boeing presented its [draft upland Feasibility Study \(FS\)](#)<sup>9</sup> and we outlined the decision-making process.

After we reviewed the draft Feasibility Study (FS) report and a [draft Supplemental FS \(SFS\)](#),<sup>10</sup> we selected the final cleanup actions for the TCE groundwater contamination and the contaminated soils at the Boeing Everett site. The final cleanup actions are described in our draft cleanup action plan (dCAP).

For 13 areas of soil contamination under Boeing buildings, the contamination will remain in place until it can be removed without disrupting facility production and operations. We require regular sampling of groundwater and indoor air to ensure contamination does not impact human health or the environment.

---

<sup>8</sup> [www.ecology.wa.gov/BoeingEverett](http://www.ecology.wa.gov/BoeingEverett)

<sup>9</sup> <https://apps.ecology.wa.gov/gsp/DocViewer.ashx?did=96155>

<sup>10</sup> <https://apps.ecology.wa.gov/gsp/DocViewer.ashx?did=96287>

## Area Community

### Geography

The Boeing Everett property is zoned heavy manufacturing (M2) and office/industrial park (M1). The property north of the Boeing Everett property comprises a steeply sloped wooded valley (gulch) with Powder Mill Creek flowing through it to the north toward the Puget Sound. This property is owned by the City of Everett and is zoned office/industrial park; however, the property has a pre-existing deed restriction designating its use only for “open space purposes.” Additional office/industrial park properties are to the west and east of the city property. The Boulevard Bluffs residential community is just north of the City of Everett’s property. This residential community is about a half-mile north of the Boeing Everett property. Boulevard Bluffs is in the southwest part of Everett and is a mostly residential community, with many single-family homes.

The area south of the Boeing Everett property has large commercial businesses and apartment complexes.

- [Boulevard Bluffs, Everett on Nextdoor](#)<sup>11</sup>
- [About Boulevard Bluffs](#)<sup>12</sup>

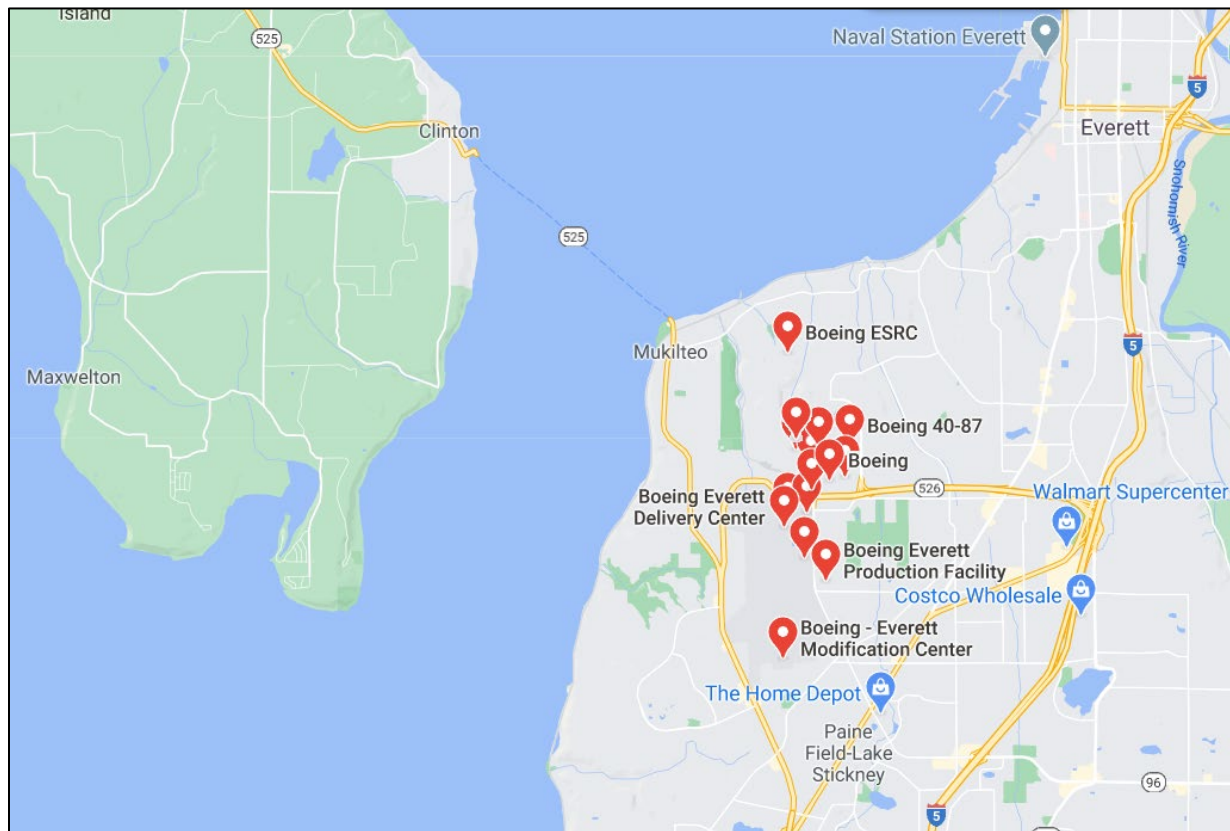


**Figure 5: Aerial photograph of the Boeing Everett industrial area**

<sup>11</sup> <https://nextdoor.com/neighborhood/boulevardbluffs--everett--wa/>

<sup>12</sup> <https://everettwa.gov/374/Boulevard-Bluffs>





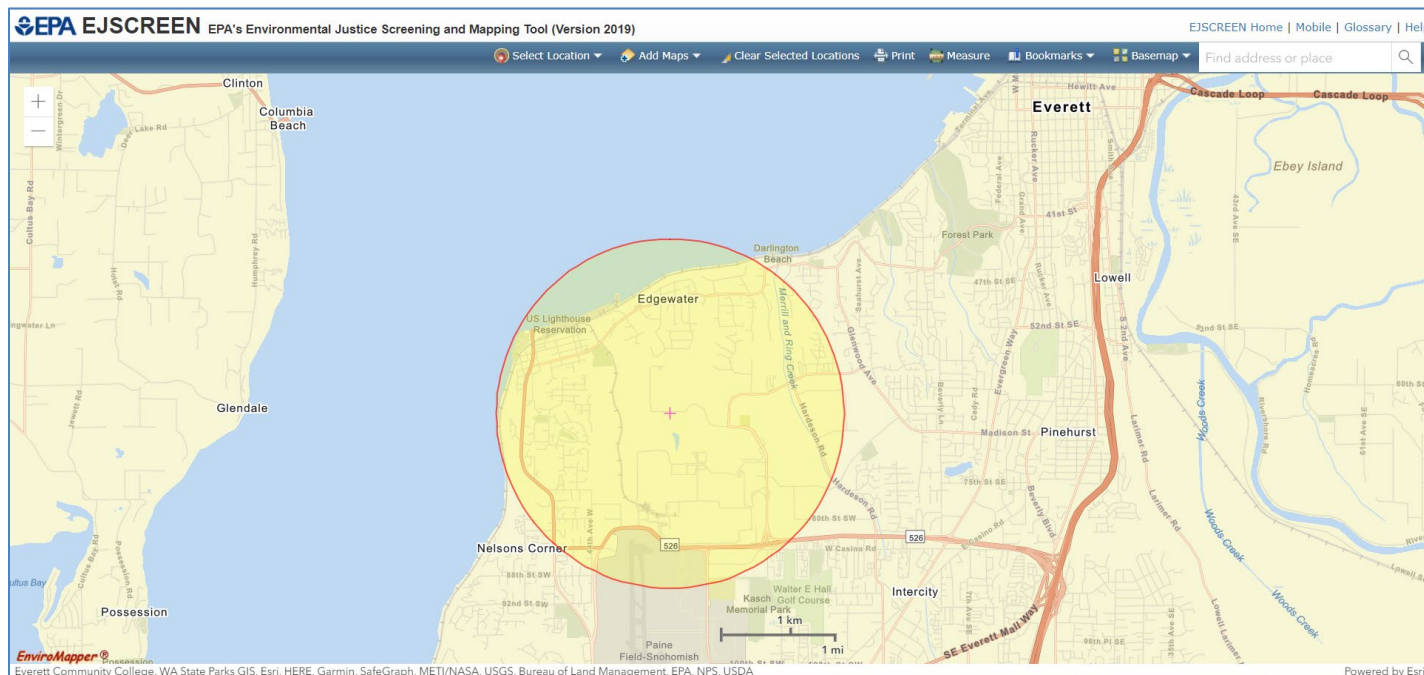
**Figure 6: Google Map showing the Boeing Everett Plant location**

## Demographics

Below are the demographic indicators for the area around the contamination at the Boeing Everett Plant, including the minority, low income, and linguistically isolated populations.

**Study area: 7.06 square miles (population 9,586)**

Demographic Indicators	Value	State Average	Percentile in State
<b>Demographic Index</b>	16%	29%	22
<b>Minority Population</b>	21%	30%	40
<b>Low Income Population</b>	12%	28%	19
<b>Linguistically Isolated Population</b>	2%	4%	55
<b>Population with Less Than High School Education</b>	4%	9%	34
<b>Population Under 5 Years of Age</b>	4%	6%	30
<b>Population Over 64 Years of Age</b>	16%	14%	67



**Figure 7: Map showing the Boeing Everett Plant's Environmental Justice (EJ) demographic screening boundaries.<sup>13</sup>**

## People of color and minority populations

We ran a demographic analysis using EPA's Environmental Justice Screen (EJSCREEN) tool for Boeing Everett. The standard report suggests these indicators for environmental justice considerations:

- Minority population
- Linguistically isolated population
- Population over age 64

Census data from the 2013–2017 American Community Survey (ACS) indicate the largest racial and ethnic populations near the contamination at the Boeing Everett Plant are Black or African American (7,470 people), making up 83 percent.

<sup>13</sup> <https://ejscreen.epa.gov/mapper/>

---

## English language proficiency

According to census data from 2013–2017, the population surrounding the contamination at the Boeing Everett Plant includes non-English language groups who speak English less than “very well.” Out of the total 74 linguistically isolated households in this area, 35 (47%) of them speak Asian-Pacific Island languages, 33 (44%) of them speak Other Indo-European languages, and 7 (9%) of them speak Spanish.

## Outreach activities and language access

Our outreach will include contacting cultural community organizations and providing information in other languages following federal guidance.<sup>14</sup> Based on the demographic analysis, we will include the following outreach activities for this site:

- Contact cultural organizations and leaders in these communities.
- Provide information to request language services for all public materials.
- Provide basic information about this site in Spanish in all outreach materials.
- Translate all documents that are vital or critical to well-being for language groups that are either 5% of the population or more than 1,000 people.

To request translation services, please contact:

Janelle Anderson, *Community Outreach & Environmental Education Specialist*  
Washington State Department of Ecology, Northwest Regional Office  
3190 160th Ave. SE  
Bellevue, WA 98008  
425-301-6454  
[janelle.anderson@ecy.wa.gov](mailto:janelle.anderson@ecy.wa.gov)

---

<sup>14</sup> Guidance to Environmental Protection Agency Financial Assistance Recipients Regarding Title VI Prohibition Against National Origin Discrimination Affecting Limited English Proficient Persons, 69 Fed. Reg. § 35602 (June 15, 2004).

---

## Public Participation Activities

You may ask questions, submit informal comments, or share site information at any time. You do not need to wait for a public comment period to contact us.

However, to be included in the official site record, you must submit your comments about the investigation or cleanup during formal comment periods. In addition, you can review site documents before they become final. This is the most direct way to learn more about the site and influence decision-making about the cleanup.

### How we share information with the community

At specific stages of the cleanup, we will mail notices about public comment periods to addresses surrounding the site. The mailing list area varies depending on the type of contamination and where it is located, but the list will at least include those addresses within a quarter-mile of the site as well as other interested organizations and individuals. These notices provide general information about the site, contact information for submitting comments, and times and locations of public meetings or hearings (or how to request one if not yet scheduled).

We may also develop documents outside of comment periods to keep the community updated about the site. These informational documents will be available online and at document repositories. If we believe the message warrants the increased cost and resources, we will mail print copies to the nearby community.

Comment period notices and other site announcements may also be posted in various places in the community (for example local businesses, schools, and libraries).

### Tribal communication

The Sauk-Suiattle Tribe, Snoqualmie Tribe, Stillaguamish Tribe, Suquamish Tribe, Swinomish Tribe, and Tulalip Tribe are federally recognized tribes in Snohomish County. We will work with the tribes on all decision-making processes for this site on a government-to-government basis.

---

## Postal mailing list

We maintain a mailing list that includes addresses near the site and relevant local, state, tribal, and federal government contacts. These addresses will receive public notices when draft documents are available for comment.

We will add individuals, organizations, and other interested parties to the mailing list when asked. To be added to the mailing list for this site, please contact Janelle Anderson at 425-301-6454 or [janelle.anderson@ecy.wa.gov](mailto:janelle.anderson@ecy.wa.gov).

## Site Register

Public comment periods, events, and other cleanup notices are published in our [Site Register](#).<sup>15</sup> To receive the Site Register by email, please contact Sarah Kellington at 360-407-7466 or [sarah.kellington@ecy.wa.gov](mailto:sarah.kellington@ecy.wa.gov), or [subscribe online](#).<sup>16</sup>

## Newspaper display ads or legal notices

We maintain a website for the [Boeing Everett site](#).<sup>17</sup> This website provides site information and cleanup documents. Information may also be shared through [news releases](#)<sup>18</sup> and [Ecology's blog](#).<sup>19</sup> We announce public comment periods and public events in newspaper display ads or legal notices. For this comment period, we will post an ad in the [Everett Herald](#)<sup>20</sup> as well as advertise on the [KRKO 1380 AM radio station](#).<sup>21</sup> We will also publish notice on our [Public Input & Events Listing](#).<sup>22</sup>

---

<sup>15</sup> <https://ecology.wa.gov/Regulations-Permits/Guidance-technical-assistance/Site-Register-lists-and-data>

<sup>16</sup> <http://listserv.wa.gov/cgi-bin/wa?SUBED1=siteregister&A=1>

<sup>17</sup> <https://apps.ecology.wa.gov/gsp/Sitepage.aspx?csid=4534>

<sup>18</sup> <https://ecology.wa.gov/About-us/Get-to-know-us/News>

<sup>19</sup> <https://ecology.wa.gov/blog>

<sup>20</sup> <https://www.heraldnet.com/>

<sup>21</sup> <https://www.everettpost.com/krko>

<sup>22</sup> <https://ecology.wa.gov/Events/Search/Listing>

---

## Email list for TSD facility updates

We have an email list to update interested people about TSD facilities in the state, including this site. If you would like to be added to that email list, please contact Janelle Anderson at 425-301-6454 or [janelle.anderson@ecy.wa.gov](mailto:janelle.anderson@ecy.wa.gov).

## Document repositories

**In-person document review is not currently available due to Washington state's coronavirus response and Governor Inslee's Stay Home, Stay Healthy order.** You may review all documents regarding this site online at the [Boeing Everett site](#).<sup>23</sup>

You can review documents at these locations when they re-open to the public:

## Signs around the cleanup site

We may install signs with information about project status, traffic impacts, and health risks around the cleanup site.

## How to share information with Ecology

At minimum, MTCA requires 30-day public comment periods for draft cleanup documents and 14-day comment periods for SEPA documents. SEPA documents are often available for public review with other cleanup documents. In that case, we combine the comment periods, and they last at least 30 days. We may hold comment periods longer than 30 days.

We may also identify public concerns and cleanup goals by meeting with and soliciting information from interested community members and organizations. To talk with us about this site, please contact Paul Bianco, Site Manager, at 425-649-7253 or [paul.bianco@ecy.wa.gov](mailto:paul.bianco@ecy.wa.gov).

---

<sup>23</sup> <https://apps.ecology.wa.gov/gsp/Sitepage.aspx?csid=4534>

---

**While the Stay Home, Stay Healthy order is in effect, we will not be hosting in-person public meetings or supporting physical document repositories. Documents for review will be available online only. If you need access to a hard copy document or have any other questions, please contact Janelle Anderson at 425-301-6454 or [janelle.anderson@ecy.wa.gov](mailto:janelle.anderson@ecy.wa.gov).**

## **Public comment periods**

Formal comment periods allow the public to comment on draft documents, legal agreements, and proposed cleanup actions. If there is enough interest, we may extend the public comment period. When we oversee SEPA determinations, we hold comment periods for at least two weeks and may extend them to 45 days or more when other cleanup documents are also available for review.

We publish all input received and respond to comments and questions after all comment periods. If comments received during a comment period significantly change the cleanup documents, the documents are revised and re-issued for public review.

If the comments do not result in significant changes, they become final.

## **Public events**

We hold public meetings, workshops, open houses, and public hearings based on community interest. If we have not scheduled a meeting and 10 or more people request one, a meeting will take place. This may cause us to extend a public comment period so the meeting occurs during it.

Events happen at locations that are close to the site and meet ADA standards. Public meetings, workshops, open houses, and hearings will be announced in advance using a variety of methods.

At this time there are no public meetings scheduled for this comment period. To request a virtual public meeting, please call 425-301-6454 or email [janelle.anderson@ecy.wa.gov](mailto:janelle.anderson@ecy.wa.gov).



---

## Americans with Disabilities Act

To request an ADA accommodation, contact Ecology by phone at 360-407-6700 or email at [hwtrpubs@ecy.wa.gov](mailto:hwtrpubs@ecy.wa.gov), or visit <https://ecology.wa.gov/accessibility>. For Relay Service or TTY call 711 or 877-833-6341.

**While the Stay Home, Stay Healthy order is in effect, we will not be hosting in-person public meetings.** Any online public meetings that are scheduled will meet ADA standards. We will announce any public meetings, workshops, open houses, or hearings in advance.

## Plan Amendments

We developed this public participation plan following MTCA regulations (WAC 173-340-600). We review it as the cleanup progresses and amend it as necessary. You may suggest amendments to Janelle Anderson at 425-301-6454 or [janelle.anderson@ecy.wa.gov](mailto:janelle.anderson@ecy.wa.gov).

This plan includes information for the public about opportunities for public involvement and comment. The outreach activities discussed in this section reflect our current plans for keeping the public informed and providing ways for those interested in the site to share their concerns and questions with us.

If you believe the planned outreach activities described in this plan are insufficient and would like them modified, we will work to find solutions. We are open to implementing new outreach activities or outreach tools, with or without amending this plan.



## List of Abbreviations and Acronyms

Table 1: List of abbreviations and acronyms

Abbreviation or Acronym	Definition
<b>ACS</b>	American Community Survey
<b>ADA</b>	Americans with Disabilities Act
<b>AO</b>	Agreed Order
<b>Ecology</b>	Washington State Department of Ecology
<b>EJSCREEN</b>	Environmental Justice Screen
<b>EPA</b>	US Environmental Protection Agency
<b>FS</b>	Feasibility study
<b>MTCA</b>	Model Toxics Control Act
<b>Plan</b>	Public participation plan
<b>RCRA</b>	Resource Conservation and Recovery Act
<b>SEPA</b>	State Environmental Policy Act
<b>Site</b>	Area where hazardous substances at the facility are currently located
<b>TSD</b>	Treatment, storage, and disposal facility
<b>WAC</b>	Washington Administrative Code