



# TAUSIA O LOU FALE MA LE AIGA IA *SOIFUA* *MALOLOINA LELEI*

---

Faaititia lou aafia i  
**MEA E LĒ MUMŪ SASAO I LE AFI**



Lomiga: 21-04-026SM

Ina ia talosaga mo se nofoaga ADA (Americans with Disabilities Act), faafesoota'i le Ecology i le telefoni 360-407-6700 pe imeli le [hwtrpubs@ecy.wa.gov](mailto:hwtrpubs@ecy.wa.gov). Mo Tautua e Faao atu i Uosinitone (Washington Relay Service) poo le TTY vili le 711 poo le 877-833-6341.

## O Ā MEA E FA'AAOGA IAI **MA AISEĀ?**

E fa'aaoga e falegaosimea kemikolo (chemical) e lē mumū sasao i le afi ina ia ausia ai aiaiga e lē mumū sasao i le afi i oloa mo konusuma. O nei kemikolo e faatelegese ai le mumū sasao pe a tupu se afi. O loo maua i oloa gaosi e pei o:



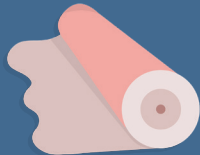
**Eletronisi**



**Nofoa o taavale**



**Falei'e**



**Mea e fa'aaoga  
i faugafale e  
faaitiitia ai le  
vevela**



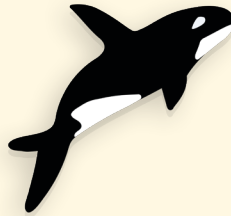
**O'a (Foam)**



**Meafale tuoi kava  
i le pa'u/tapoleni**

## O Ā MEA E **LĒ MUMŪ SASAO I LE AFI?**

**O kemikolo e lē mumū sasao i le afi ua fa'aaoga ina ia ausia ai aiaiga tau saogalemu, ae ua malamalama nei saienitisi i tulaga leaga e oo iai le soifua maloloina ma le si'os'iomaga ona o nisi o nei kemikolo. O loo maua i le tele o si'osi'omaga o Uosinitone.**



O nisi o mea e lē mumū sasao i le afi e faaputupu ai le **bioaccumulate**, e afaina ai ituaiga eseese o meaola nini'i e pito i luga o le faagasologa o mea'ai.

O suiga i tulafono, ua **lē manaomia** ai ni mea e lē mumū sasao i le afi pe fa'aaoga i nisi oloa gaosi.



E lē tutusa uma mea e lē mumū sasao i le afi, **e iai ni nai mea e popole iai** ona o lo tatou soifua maloloina.

**O le uia o laasaga mo le puipuiga**

e aogā e faaitiitia ai lou aafia i na mea.



<sup>1</sup> E ao ona tusia i leipo (labels) "o lenei oloa gaosi e LĒ o tuina iai ni kemikolo e lē mumū sasao i le afi."

<sup>2</sup> Sailiili i mea nei e iloa ai oloa gaosi: [tccertified.com/product-finder](http://tccertified.com/product-finder) or [epeat.net](http://epeat.net)

<sup>3</sup> Taumafai e su'e i le HomeFree mo se lisi: [homefree.healthybuilding.net/products](http://homefree.healthybuilding.net/products)

## E FAAPEFEA ONA OU AAFIA AI?

A'o e fa'aaogaina nisi oloa gaosi, e ta'ape atu ai nisi o mea e lē mumū sasao i le afi i le pefu ma le ea. O le manavaina ma foloina o lena pefu ua faaleagaina o le auala sili lea aafia ai i nei mea o'ona (toxic) mai kemikolo. Pe a uma ona ta lavalava, ona sao atu lea o mea e lē mumū sasao i le afi i le si'osi'omaga, o le auala lea e mafai ai ona aafia meaola i le vaomatua ae ua leva ona tuua e nei kemikolo lou fale.

### Auala masani e aafia ai:



Foloina o pefu ua faao'onaina

**POO**

Le manavaina o pefu ua faao'onaina



## E FAAPEFEA ONA OU AAFIA AI I NA MEA?



Faaleagaina ai le tuputupua'e o le fai'ai

Faaletonu ai tulaga o le fanautama



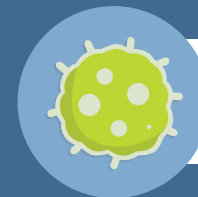
Tuputupua'e le faao'onaina (toxicity)



Faao'onaina le ate



Carcinogenic

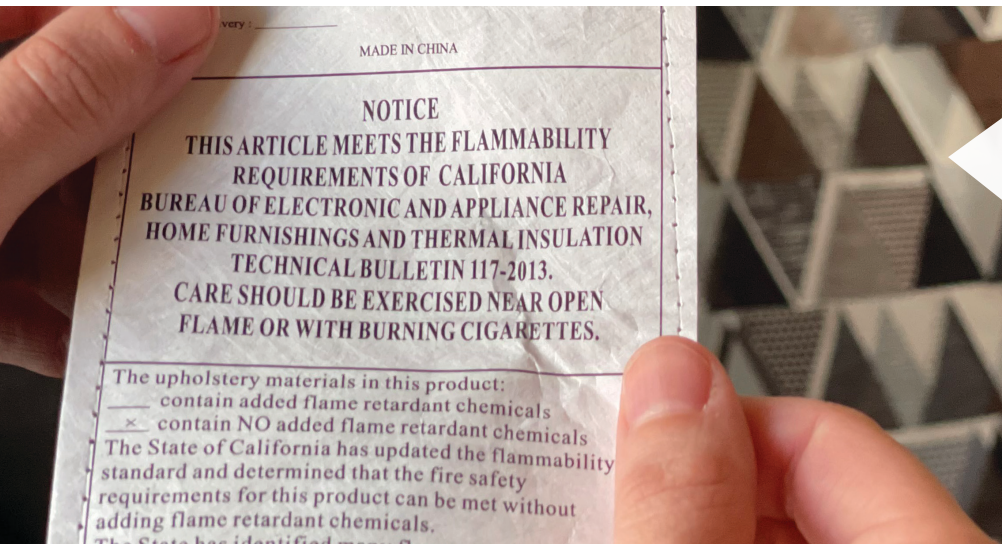


<sup>4</sup> [ecology.wa.gov/PBDE](https://ecology.wa.gov/PBDE)

<sup>5</sup> [https://foam.pratt.duke.edu/sites/foam.pratt.duke.edu/files/u32/Foam%20fact%20sheet\\_10-29-19.pdf](https://foam.pratt.duke.edu/sites/foam.pratt.duke.edu/files/u32/Foam%20fact%20sheet_10-29-19.pdf)

## O Ā MEA E TE FAIA E **PUIPUI I LE AAFIA AI?**

O nisi nei o laasaga e uia e faaitiitia ai le faamta'uina mai mea e lē mumū sasao i le afi i lou fale:



### **Faatau oloa gaosia e lē o iai ni mea e lē mumū sasao i le afi.**

- Faitau ma le faaeteete le leipo e lē mumū sasao i le afi pe a faatau ni meafale na gaosia.<sup>1</sup>
- Pe a oo i le taimi e faatau ai se laptop poo se tablet fou, saili masini eleoronisi e saogalemu.<sup>2</sup>
- Saili meafaufale ma meafaigaluega gaosia e saogalemu.<sup>3</sup>

### **Faaitiitia le aafi ai i ni nai masaniga nei e fai i le fale.**

O mea e lē mumū sasao i le afi e faaputupu i pefu o lou fale. Vacuum ma faamamā e le aunoa le pefu o lou fale. Faaaoga le masini vacuum e iai se HEPA ina ia 'apoina ai mea nini'i. Fufulu ou lima e le aunoa i le fasimoli ma le vai. E tāua tele pe a uma ona faamamā lou fale ma pe a o le'i faia le taumafataga.



### **Puipui oe i le silafia lea poo ā oloa gaosi o loo maua ai mea e lē mumū sasao.**

- Saili poo ā oloa gaosi mo konusuma o loo maua ai nei kemikolo i mea e lē mumū sasao i le afi i la matou uepesite.<sup>4</sup>
- Afai e te fiafia i lou nofoa umi, fai iai se su'esu'ega e lē totogia poo fea le omomi atonu e te manao e sui.

