

Everett Smelter Project: Spring 2022



North Everett looking north along East Marine View Dr.

Contacts and Webpages

Everett Smelter Hotline

425-446-1024

Need another language? Interpretation available upon request when you call the hotline.

Website

www.ecology.wa.gov/EverettSmelter

Email List (New!)

Sign up to receive updates¹ like this one electronically. Unsubscribe at any time.



Dirt Alert Map

Learn if your property is in the cleanup area.
<https://apps.ecology.wa.gov/dirtalert/everett>

Project Manager

Sandra Matthews
Sandra.Matthews@ecy.wa.gov
(425) 223-1999

Facility Site ID: 2744
Cleanup Site ID: 4298

Spring 2022 project updates

2022 brings cleanup construction and more soil sampling to north Everett. The Everett Smelter Project Team is working to sample remaining properties and cleanup arsenic contamination in north Everett. Learn more inside:

- Upcoming construction for nearly 60 properties. (Page 2-3)
- Buying or selling a home in the Everett Smelter cleanup area. (Page 2)
- Signing up for soil sampling. It's free! (Page 4-5)
- Improving stormwater drainage in the lowlands. (Page 5)

Translations Available

Español: Descargue una traducción de este documento en español visitando nuestro sitio web en <http://www.ecy.wa.gov/EverettSmelter> o llamando a la Línea Directa de la Fundición de Everett al (425) 446-1024.

Tiếng Việt: Tải xuống bản tiếng Việt của tài liệu này bằng cách truy cập mạng tại <http://www.ecy.wa.gov/EverettSmelter> hoặc gọi Đường dây nóng của Everett Smelter theo số (425) 446-1024.

Русский язык: Скачать перевод этого документа на русский язык можно на нашем веб-сайте по адресу www.ecy.wa.gov/EverettSmelter или позвонив по телефону горячей линии Everett Smelter (425) 446-1024.




¹https://public.govdelivery.com/accounts/WAECY/subscriber/new?topic_id=WAECY_235

Progress update: 2019-2022 cleanup groups

Cleaning up contaminated soil in the Everett Smelter area takes place in distinct phases. The 2019 and 2020 cleanup groups faced delays due to the COVID-19 pandemic. We expect both groups to move into consecutive construction phases this year. Learn more about the status of existing and new cleanup groups below.

Everett Smelter residential cleanup phases



Cleanup group	Cleanup stage	Progress details
2019 cleanup group	 Hiring a contractor	<ul style="list-style-type: none"> All cleanup plans are finalized. Ecology will accept bids for doing the cleanup. A pre-construction meeting will be held shortly after selecting the contractor in July. Soil removal construction will begin this summer.
2020 cleanup group	 End of cleanup plan design	<ul style="list-style-type: none"> Almost all cleanup plans are finalized. Ecology is preparing the project manual for this group. We will use this manual to hire a contractor later this fall.
2022 cleanup group	 Start of cleanup plan design	<ul style="list-style-type: none"> We will reach out to this group by mail this summer inviting property owners to a cleanup orientation meeting. We will then get property owners signed up for home visits to begin creating cleanup plans in the fall.

Buying or selling a home in the Everett Smelter cleanup area

Spring and summer are high turnover times for properties in the cleanup area. We get calls from new owners often surprised to learn their property may have arsenic contamination in the soil. Below are a few tips.

Buying

- Check if the property is in the cleanup area by using the Dirt Alert Map (link on page 1).
- You can download cleanup information about any property in the cleanup area with this map.

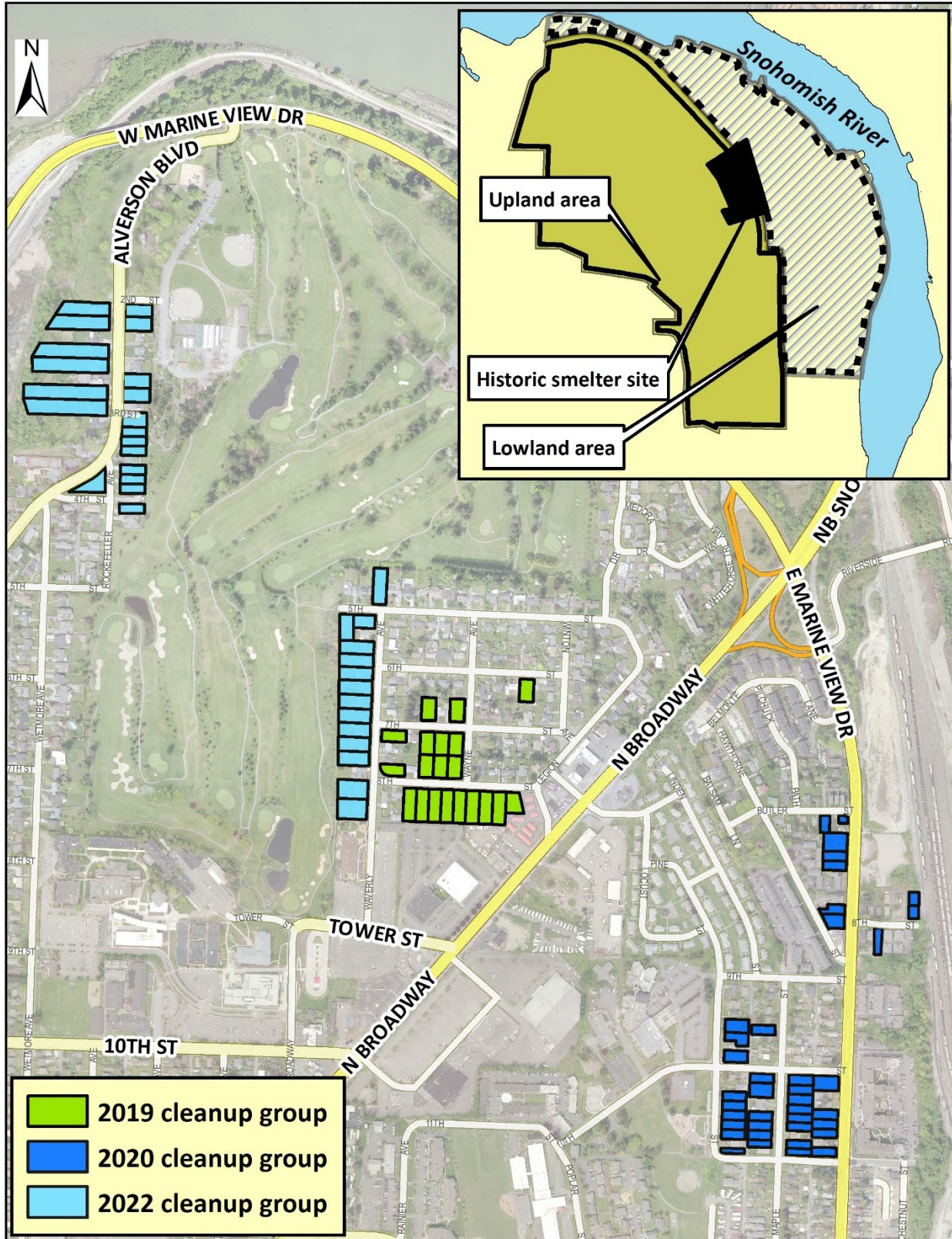
Selling

- Remember to comply with state disclosure law. Work with your real estate agent to fill out the seller’s disclosure statement (required by RCW 64.06.020²).
- The cleanup documentation for the property should stay with the property and be given to the new property owner.



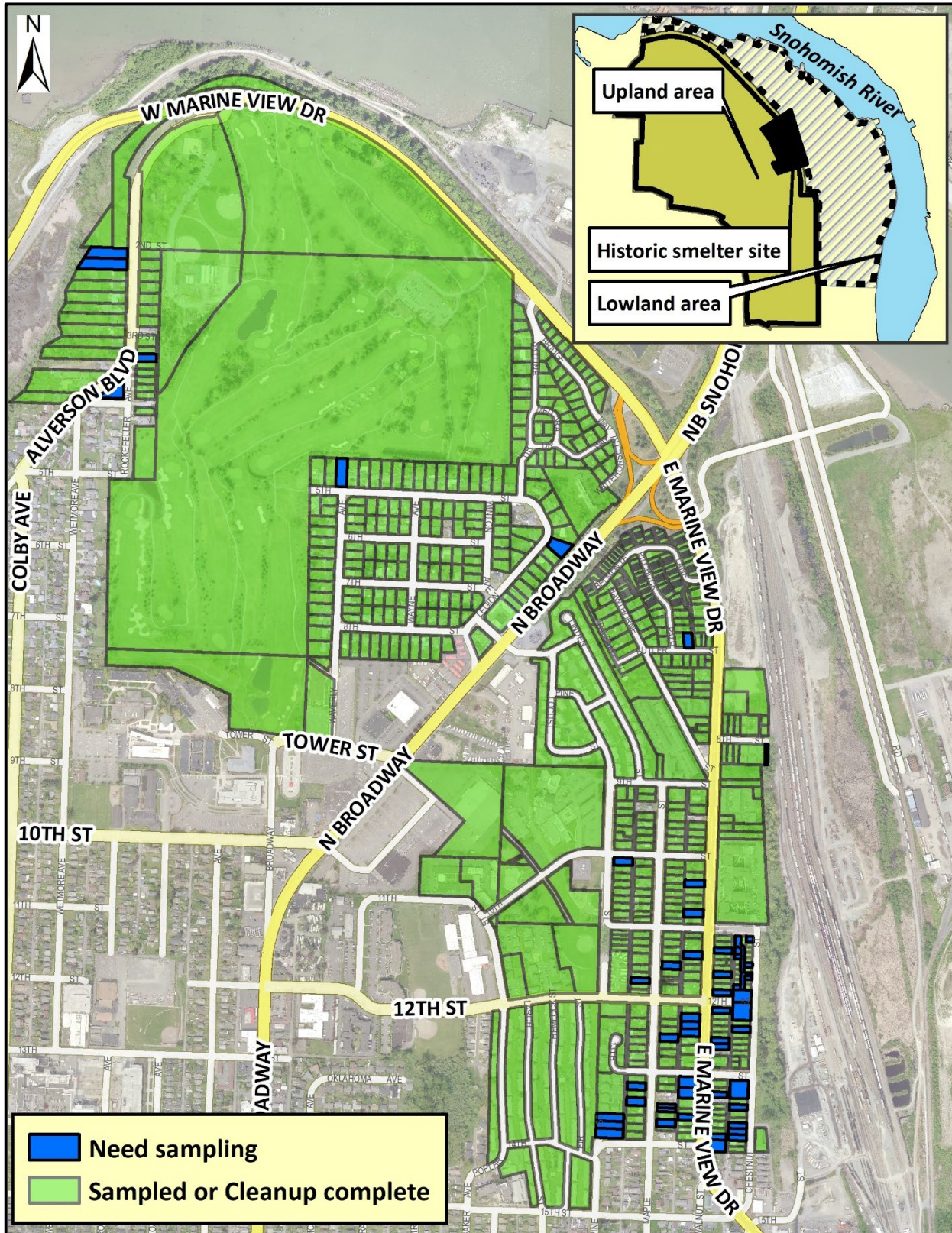
² <https://apps.leg.wa.gov/rcw/default.aspx?cite=64.06.020>

Everett Smelter cleanup groups



By summer, Ecology will be working with three cleanup groups in north Everett. The 2019 group has around 20 properties. The 2020 group has around 40 properties. The 2022 group will have approximately 33 properties.

Everett Smelter soil sampling status



Approximately 40 properties still need soil sampling to be conducted. Most are in the southeast part of the cleanup area. Ecology is working to get these properties signed up for summer soil sampling.

Sign up for soil sampling. It's free!

Another round of free soil sampling is happening in 2022. Sign up today! Find the access agreement on our webpage at <https://bit.ly/Ecology-2022AA>. You can also request one by calling the hotline at (425) 446-1024.

91%

of residential properties are sampled in the Everett Smelter cleanup area.

Returning your access agreement



Mail it.
Everett Smelter Project
PO Box 330316
Shoreline, WA 98133



Take a photo.



Download the form.*

Text forms to
(425) 229-3683

Email forms to
Meredith.Waldref@ecy.wa.gov

* <https://bit.ly/Ecology-2022AA>

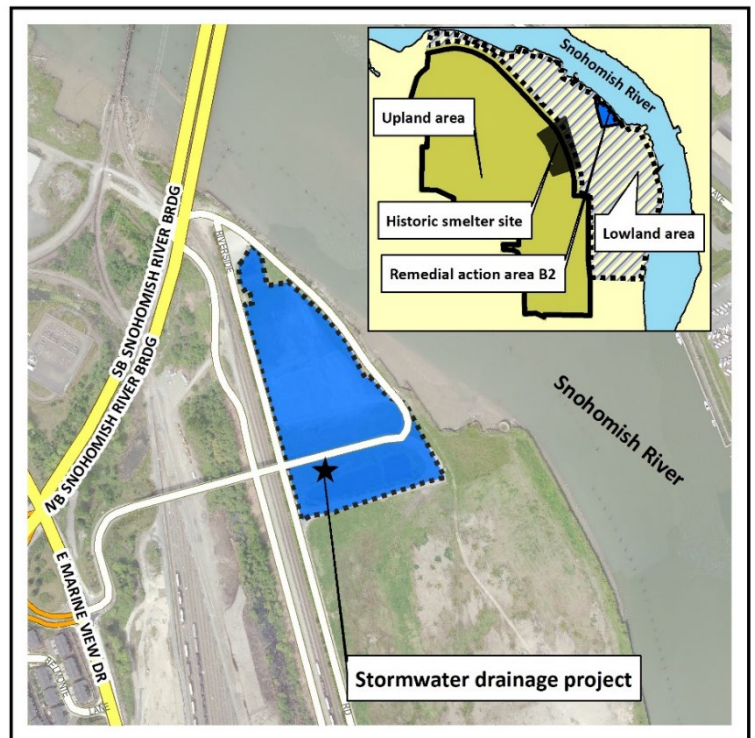
The Everett Smelter cleanup team accepts soil sampling enrollment forms by mail, text, or email.

Improving stormwater drainage in the Smelter lowland area

This year, Ecology will work with the City of Everett (City) on improvements to the existing stormwater drainage system in northeastern Everett. This system of drains and pipes carries rainwater underground from the surrounding area into the Snohomish River. Ecology inspected the stormwater pipes in this area (Area B2) in 2016 and found small cracks. These cracks could allow groundwater to enter the drainage system that flows into the Snohomish River. This drainage system is within the Everett Smelter Cleanup Site, and the groundwater could have arsenic contamination.

In order to protect the Snohomish River and communities that rely on it, Ecology and the City will install a lining inside the cracked pipes to prevent groundwater from entering the system.

The City of Everett will also put in fencing along E Marine View Dr. at the top of the steep slope above the railroad tracks. They are installing this fencing to limit access to contaminated soil on the steep slope.



The stormwater system work area (area B2) is along the Snohomish River, just east of the Snohomish River Bridge.

Toxics Cleanup Program
PO Box 330316
Shoreline, WA 98133-9716

Everett Smelter Project: Spring 2022 Update

Take these steps to protect your family from contaminated soil!



Wash your hands well after handling soil.



Grow veggies in raised beds. Wash before eating.



Wear gloves. Wash dirty clothes separately.



Mop, damp dust and vacuum often inside.



Take your shoes off in the house.



Brush and bathe your pet often. Give pets their own beds.

Cleaning your hands, veggies, pets, and home are easy ways to protect you and your family from arsenic contamination in soil.

ADA accessibility: To request an ADA accommodation, contact Ecology by phone at 425-229-3683 or email at Meredith.Waldref@ecy.wa.gov, or visit ecology.wa.gov/Accessibility. For Relay Service or TTY call 711 or 877-833-6341.