

Port Gamble Bay and Mill Site



Figure 1. Aerial view of Port Gamble.

Comments accepted:

March 10 – April 9, 2023

How to Comment:

Online:

<https://tcp.ecology.commentinput.com/?id=r4uFG>

By mail:

Corey King, Site Manager
PO Box 47600
Olympia, WA 98504-7600

Site Information:

Facility Site ID: 93937775
Site Cleanup ID: 3444

Review Documents:

Department of Ecology

300 Desmond Drive SE
Lacey, WA 98503
(360) 407-7224

Poulsbo Library

700 NE Lincoln Street
Poulsbo, WA 98370
(360) 779-2915

Little Boston Library

31980 Little Boston Rd NE
Kingston, WA 98346
(360) 297-2670

Ecology wants your input!

The Washington State Department of Ecology (Ecology) invites comments on the Five-Year Review for the Port Gamble Bay Cleanup.

We invite you to comment on the following document:

Five-Year Review – This document is a review of the site conditions in Port Gamble Bay following completion of cleanup. The review summarizes physical, chemical, and biological monitoring information collected in Port Gamble Bay over the last five years.

Site background and contamination

The Port Gamble Mill was located on the west shore of Port Gamble Bay in Port Gamble, Kitsap County, Washington. The sawmill was owned and operated by Pope & Talbot, Inc., and their corporate predecessors to manufacture timber products from 1853 to 1995. Much of the facility was removed in 1995. Since then, the area has been leased for log sorting, wood chipping, marine research, and light industrial activities.

Historical sampling at the site identified wood waste deposits particularly adjacent to the Mill site, as well as creosote pilings and pollutants that are created during wood product manufacturing and treatment. These pollutants include wood waste degradation products such as hydrogen sulfide, along with metals, carcinogenic polycyclic aromatic hydrocarbons (cPAHs), and dioxins/furans.

The in-water portion of the cleanup was completed by Pope Resources (now Rayonier) from 2015 to 2017. The in-water cleanup action

included removing 8,600 pilings, 110,000 cubic yards of wood waste and sediments, and 1.3 acres of over-water structures. These materials were disposed in protective and approved off-site landfills. Following removal, clean sand and habitat substrate were placed over 92 acres of the Bay to accelerate environmental recovery.

Since then, Rayonier has been performing regular monitoring of Port Gamble Bay, including shellfish monitoring completed in partnership with the Port Gamble S'Klallam Tribe, which informed this Five-Year Review. Current shellfish tissue concentrations have been protectively reduced to Puget Sound reference (natural background) levels.

Why it matters

Cleanup actions were required by Ecology to address potential threats to human health and the environment in the Bay. Post-construction monitoring was performed to verify that remediation efforts were successful. As described in this Five-Year Review, the Port Gamble Bay cleanup remedy appears on track to achieve objectives set forth by Ecology in the 2013 Cleanup Action Plan. A follow-up round of monitoring will be performed in 2026. The monitoring results will be used to assure human health and the environment are being protected and inform the next Five-Year Review scheduled for 2027.

What happens next

Ecology will consider all comments on the Five-Year Review received during the comment period, and Ecology may change the documents based on your comments. If no significant changes are made, the Five-Year Review will be finalized.

Ecology's Cleanup Process

The Model Toxics Control Act (MTCA) is Washington's environmental cleanup law. It provides requirements for contaminated site cleanup and sets standards that protect human health and the environment. Ecology enacts the MTCA and oversees cleanups. The MTCA site cleanup process is completed in steps (see below) over a timeline that may change from project to project.

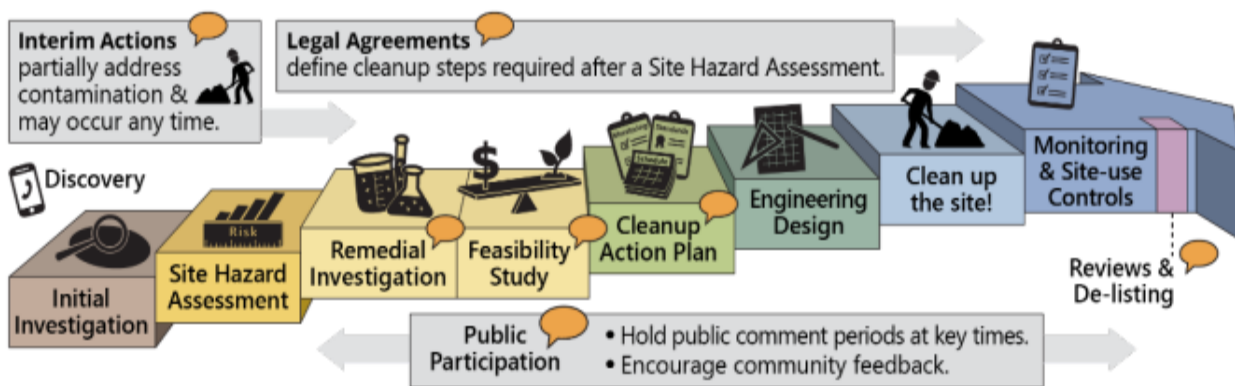


Figure 2. Port Gamble Bay and Mill Site cleanup is in the last step of Washington's process.

Where to find documents

You can find the Five-Year Review at the three document repositories listed on the first page of this fact sheet.

You can view these and other project documents on the project website at:

<https://apps.ecology.wa.gov/cleanupsearch/site/3444>

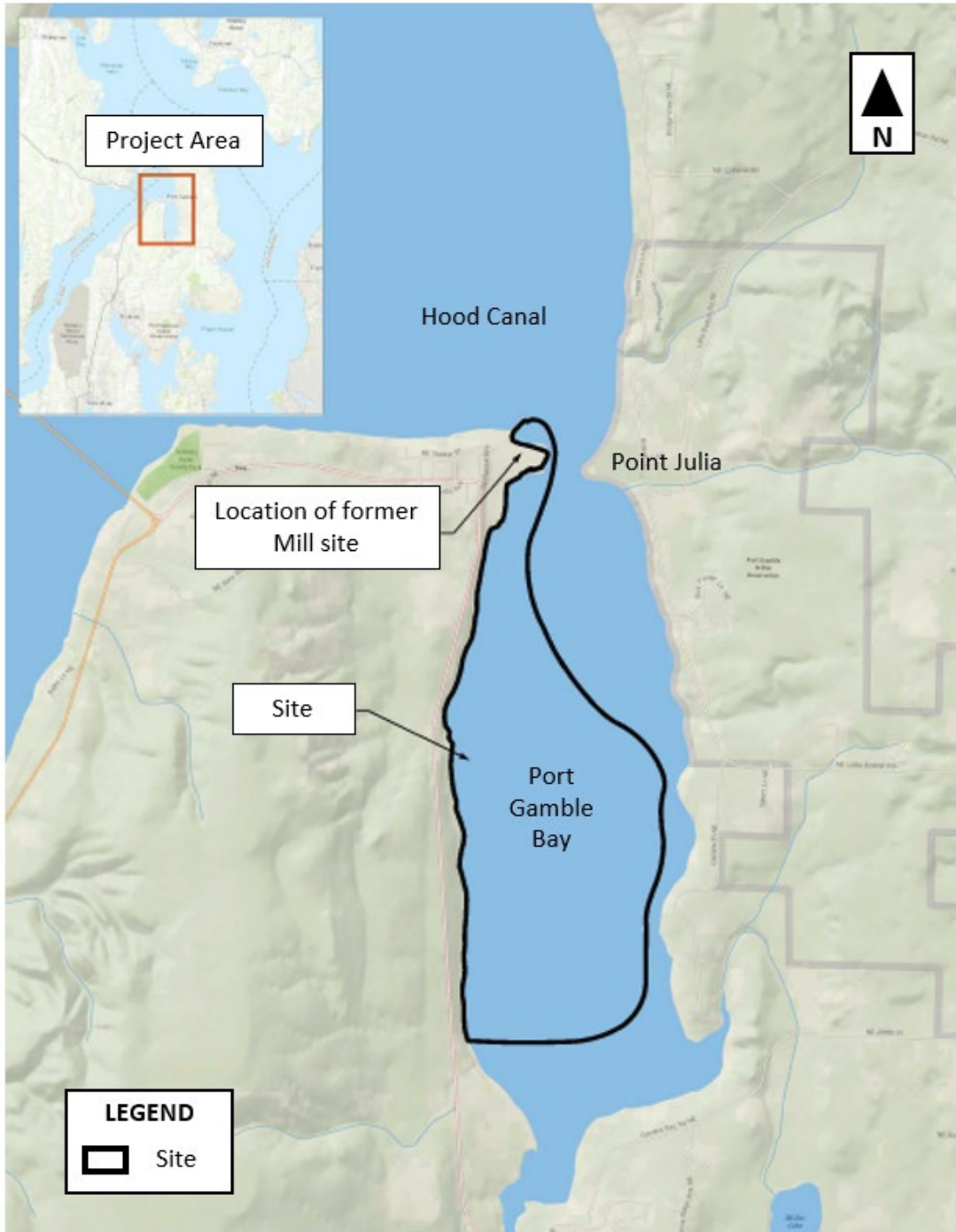


Figure 3: Map showing the location of the Port Gamble Bay and the former Mill Site in Port Gamble, WA.
(See page 2 of 2022 Port Gamble Bay Cleanup Five-Year Review)



Toxics Cleanup Program
PO Box 47600
Olympia, WA 98504-7600



Port Gamble Bay and Mill Site

Date of Comment Period: March 10 – April 9, 2023

Contact Information

Corey King, Site Manager
300 Desmond Drive SE
Lacey, WA 98503

ADA Accessibility

To request an ADA accommodation, contact Ecology by phone at 360-995-3252 or email at jennifer.riedmayer@ecy.wa.gov, or visit ecology.wa.gov/Accessibility. For Relay Service or TTY call 711 or 877-833-6341.