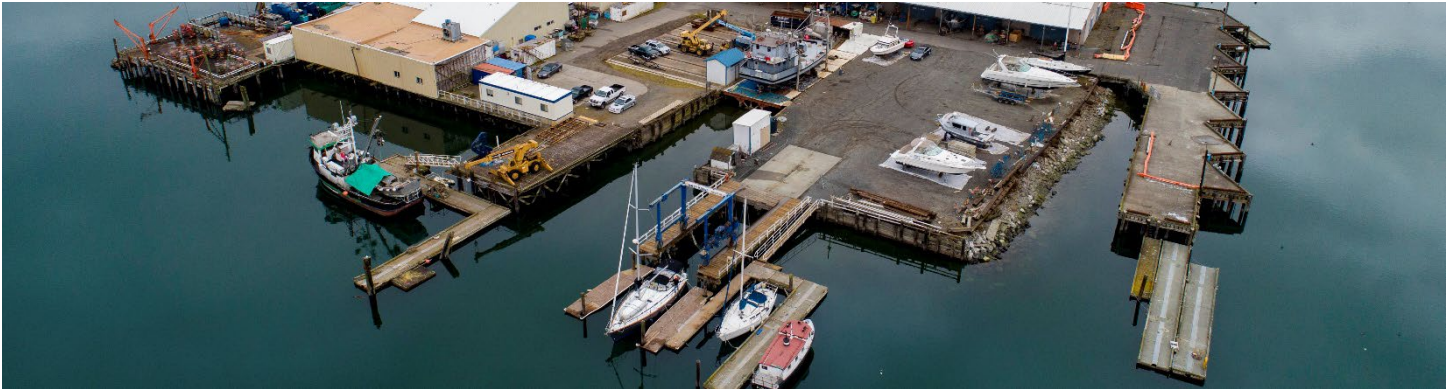


Westman Marine Site



Aerial view of Blaine Harbor and Westman Marine cleanup site in foreground

Comments accepted:

May 22 – July 5, 2023

Submit comments:

Online at www.bit.ly/Ecology-WestmanMarine-Comments2023

Or by mail to:

Cris Matthews, Site Manager
 WA Department of Ecology
 913 Squalicum Way, Unit 101
 Bellingham, WA 98225
 Phone: 360-255-4379
 Email: Cris.Matthews@ecy.wa.gov

Document review locations:

www.bit.ly/Ecology-WestmanMarine

Blaine Library

610 3rd Street
 Blaine, WA 98230

For document review assistance,
 please contact:

Ian Fawley

Outreach Planner
Ian.Fawley@ecy.wa.gov
 425-324-5901

Site info:

Facility Site ID: 66519819

Site Cleanup ID: 2205

Cleanup Action Plan ready for public review

The Department of Ecology (Ecology) invites you to review a draft cleanup action plan and associated documents for the Westman Marine cleanup site (Site) at the Blaine Harbor. The Port of Bellingham (Port) owns and operates Blaine Harbor. The plan calls for a combination of removing and capping contamination, monitoring conditions, and restricting uses.

The following documents are available for review:

- **Cleanup Action Plan:** Ecology's plan that describes the cleanup work to address contamination at the Site.
- **Agreed Order:** Legal agreement that requires the Port to develop detailed design documents for work described in the cleanup action plan.
- **State Environmental Policy Act-Determination of Non-Significance:** Ecology determination that the cleanup work is not likely to harm the environment.

On-site walking tour (with Sea K Fish Site)

RE Sources will host a tour of the Site with Ecology and Port staff:

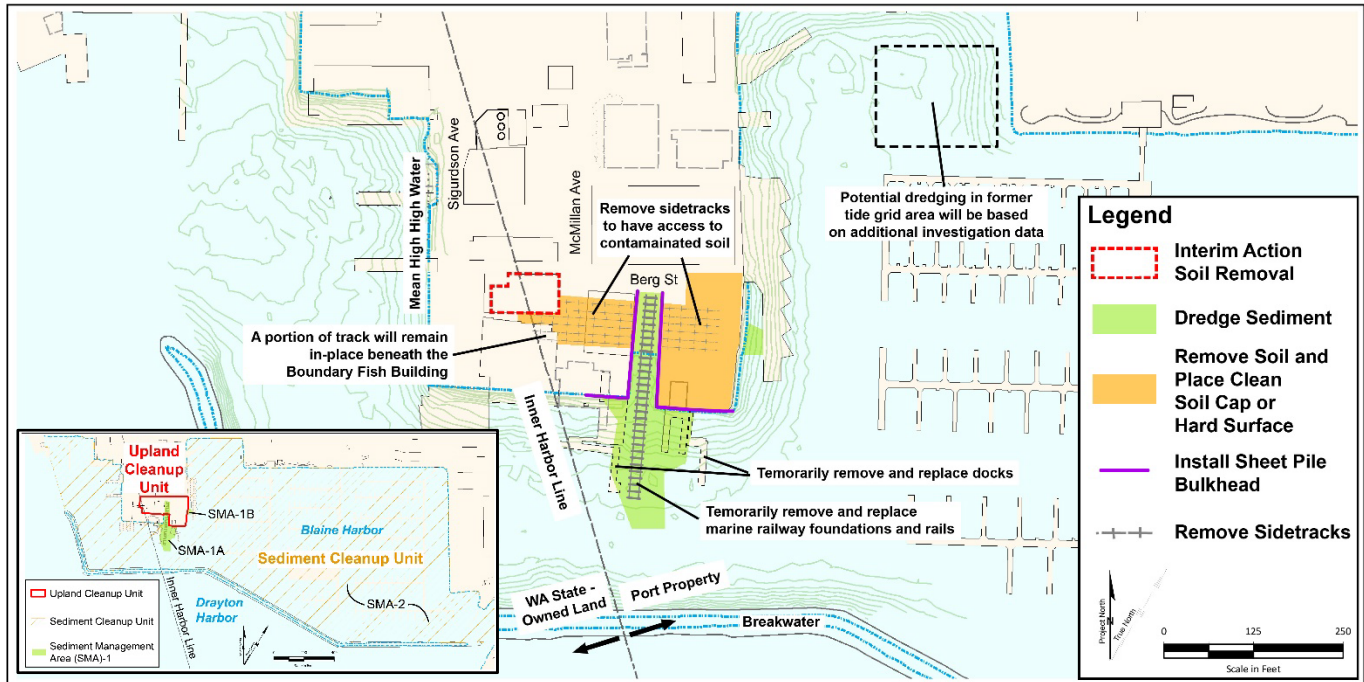
Wednesday, May 24, 2023; Noon – 1:30 p.m. at 218 McMillan Avenue, Blaine, WA www.re-sources.org/BlaineHarbor; This tour is funded through a Public Participation Grant from Ecology.

Online public meeting (with Sea K Fish Site)

Ecology will hold an online public meeting to provide information and answer questions:

Wednesday, May 24, 2023; 6:30 p.m. presentation;
7:30 p.m. question/answer time (as needed)

Visit www.bit.ly/Ecology-WestmanMarine to register and join meeting. Call Ian Fawley, Outreach Planner, 425-324-5901, for dial-in options and other online meeting support.



Cleanup Units

The Westman Marine cleanup site consists of an approximately 1-acre upland area (Upland Cleanup Unit) and an approximately 27-acre in-water sediment area (Sediment Cleanup Unit) extending throughout Blaine Harbor. See figure above.

Cleanup Action Plan

In August 2020, the Port, with Ecology oversight, completed an environmental study of the Site’s upland (Upland Unit) and in-water sediment (Marine Unit) areas and assessed a range of cleanup options. Based on this work, Ecology has prepared a Cleanup Action Plan to address contamination at the Site. The plan includes the combined upland and in-water sediment actions described below and incorporates the 2014 interim action (see page 4 for previous cleanup work):

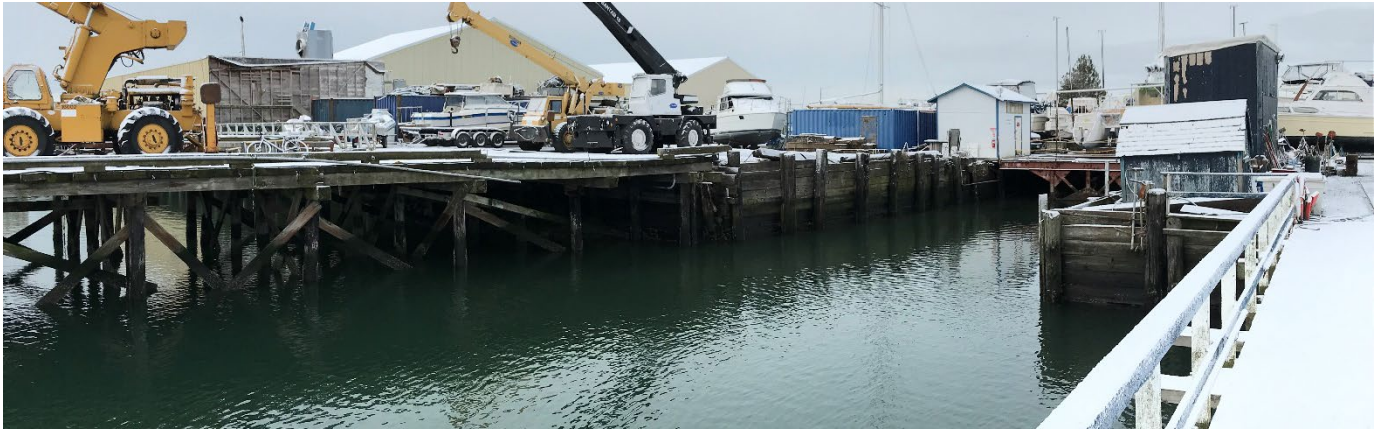
Upland Cleanup Unit (upland)

- Remove top 2 feet of contaminated soil, dispose offsite, and place a cap - such as clean soil or a hard surface (asphalt/concrete). The future pre-remedial design investigation will confirm the depth of soil removal and the type of capping in the engineering design.
- Remove sidetracks to have access to contaminated soil.

Sediment Cleanup Unit (in-water sediment)

- Install a sheet pile bulkhead to support dredging and prevent upland soil erosion and exposure to contaminated soil.
- Temporarily remove and replace docks and marine railway (or replace with travel lift) to enable dredging.
- Dredge contaminated sediment and dispose offsite.
- Perform compliance monitoring to ensure cleanup standards are achieved. (If needed, place additional cover layer over in-water sediment to attain cleanup standards.)

Ecology will require Site use controls that restrict certain activities and a long-term operation and maintenance plan.

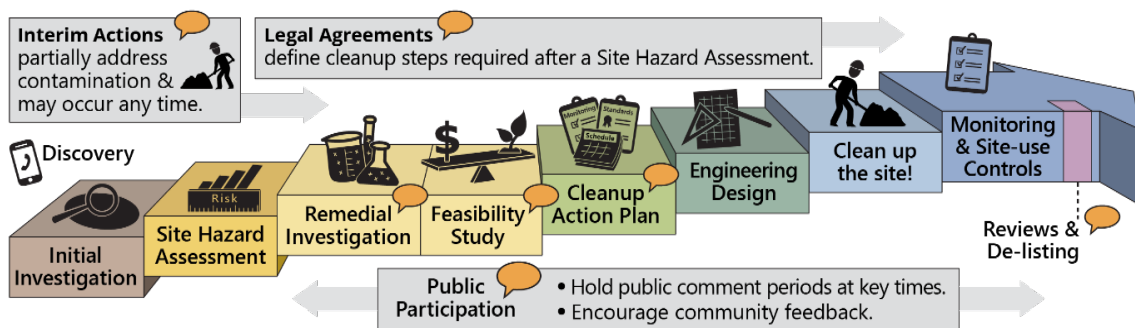


Westman Marine site marine railway and boat maintenance area

Washington’s formal cleanup process

The Model Toxics Control Act ([MTCA](#)¹) is Washington’s environmental cleanup law. It provides requirements for contaminated site cleanup and sets standards that protect human health and the environment. Ecology enacts the MTCA and oversees cleanups.

The [MTCA site cleanup process](#)² is completed in steps over a variable timeline (see graphic below).



What happens next?

- **May 22 – July 5, 2023:** 45-day public comment period.
- **May 24, 2023:** On-site walking tour (RE Sources-hosted) and online public meeting (Ecology-hosted).
- **Summer 2023:** Cleanup action plan and associated documents finalized after addressing public comments received.
- **2023/2024:** Engineering design and permitting completed for the cleanup action.

Construction of the cleanup action plan will occur in the future under a separate legal agreement, which will be issued for public review and comment.

Costs and funding

The design work required by the new agreed order, and the remaining cleanup work is expected to cost about \$14 million. The Port is eligible for reimbursement of up to half of their cost from Ecology through the state’s remedial action grant program. This funding helps to pay to clean up publicly owned sites. The Legislature funds the grant program with revenues from a tax on hazardous substances.

¹ <http://www.ecology.wa.gov/MTCA>

² <https://ecology.wa.gov/Spills-Cleanup/Contamination-cleanup/Cleanup-process>

Background

The Westman Marine cleanup site is located at 218 McMillan Avenue in the Blaine Harbor industrial area in Blaine, WA. Portions of the property were contaminated by past boat maintenance and repair operations.

Blaine Harbor was originally created in the late 1930s by dredging the tideflats and using the dredged materials to create uplands. The harbor’s upland areas were expanded in the 1940s, 1950s, and again in 2001.



Aerial photo of Blaine Harbor, 1956, including cleanup site

The property has been used for marine operations since approximately 1949, and the Port has leased it to several different companies. The State of Washington owns a portion of the site which the Port manages. (See figure on page 2.)

Contamination

In 2001 the Port began voluntarily sampling sediments in Blaine Harbor. Further investigations conducted by the Port in 2013-2014 found contamination concentrations at the Site above state standards established to protect human health and the environment:

- **Soil:** carcinogenic polycyclic aromatic hydrocarbons (cPAHs), polychlorinated biphenyls (PCBs), and metals
- **Sediment:** Metals, organotins (TBT), cPAHs and PCBs

Groundwater is not affected by the contamination releases on the Site and is not considered an affected medium.

Previous cleanup work

In March 2014, the Port completed an early cleanup action (Interim Action) in order to construct a new building for another tenant partially located in the Site area. The Port removed and disposed of approximately 420 tons of contaminated soil.



Interim Action location

En español

El Departamento de Ecología le invita a comentar sobre un reporte ambiental para el sitio que está contaminado Westman Marine en Blaine.

Para recibir este documento en español, por favor llame a 425-324-5901 y espere a que un intérprete se una a la llamada o envíe un correo electrónico a preguntas@ecy.wa.gov. Traducciones de avisos públicos para este sitio de limpieza se preparan bajo solicitud.

Toxics Cleanup Program
913 Squalicum Way, Unit 101
Bellingham, WA 98225

Westman Marine Site Cleanup Action Plan ready for public review



Información en español incluida (página 4)

Public comment period

May 22 – July 5, 2023

www.bit.ly/Ecology-WestmanMarine

www.bit.ly/Ecology-WestmanMarine-Comments2023

Public outreach events – see page 1 for details

May 24, 2023

- Noon: On-site walking tour (hosted by RE Sources)
- 6:30 p.m.: Online public meeting (hosted by Ecology)

ADA accessibility

To request an ADA accommodation, contact Ecology by phone at 425-324-5901 or email at ian.fawley@ecy.wa.gov, or visit ecology.wa.gov/Accessibility. For Relay Service or TTY call 711 or 877-833-6341.



Aerial view of Blaine Harbor and Westman Marine cleanup site