

Everett Smelter Project: Fall 2023



2019 cleanup group construction.

Contacts and Webpages

Everett Smelter Hotline

425-446-1024

Need another language? Interpretation available upon request.

Website

www.ecology.wa.gov/EverettSmelter

Email List

Sign up to receive updates¹ like this one electronically. Unsubscribe at any time.



Dirt Alert Map

Learn if your property is in the cleanup area
<https://apps.ecology.wa.gov/dirtalert/everett>

Project Manager

Sandra Matthews | (425) 223-1999
 Sandra.Matthews@ecy.wa.gov

Facility Site ID: 2744 | **Cleanup Site ID:** 4298

Snohomish County Health Department

Call for more information on:
 Blood lead testing for children (425) 258-8401
 Contaminated soil disposal (425) 339-5250

Washington State Department of Health

www.doh.wa.gov/community-and-environment/contaminants/arsenic

Fall 2023 project updates

The Everett Smelter Project Team is working to remove arsenic contamination left behind by the historic Everett Smelter. The cleanup area is divided into two sections, the mostly residential upland area and the industrial lowland area. Learn more about the following items below:

- Updates for each active cleanup group (Page 2).
- Signing up for free soil sampling (Page 3).
- Improving lowland stormwater drainage (Page 3).
- Healthy actions to keep you and your family safe when living or working in/around contaminated soil (Page 4).

Translations Available

Español: Descargue una traducción de este documento en español visitando nuestro sitio web en <http://www.ecy.wa.gov/EverettSmelter> o llamando a la Línea Directa de la Fundación de Everett al (425) 446-1024.

Tiếng Việt: Tải xuống bản tiếng Việt của tài liệu này bằng cách truy cập mạng tại <http://www.ecy.wa.gov/EverettSmelter> hoặc gọi Đường dây nóng của Everett Smelter theo số (425) 446-1024.

Русский язык: Скачать перевод этого документа на русский язык можно на нашем веб-сайте по адресу www.ecy.wa.gov/EverettSmelter или позвонив по телефону горячей линии Everett Smelter (425) 446-1024.

¹ https://public.govdelivery.com/accounts/WAECY/subscriber/new?topic_id=WAECY_235

Progress update: 2019 - 2022 cleanup groups

Cleaning up contaminated soil in the Everett Smelter upland area takes place in distinct phases. Our team is currently working with three cleanup groups at different stages in the process.

Everett Smelter residential cleanup phases



2019 cleanup group



- Soil cleanup and landscape care workshops are complete.
- Lawn fertilization occurred in October 2023.
- Cleanup documentation will be sent to homeowners in Winter 2024.

2020 cleanup group

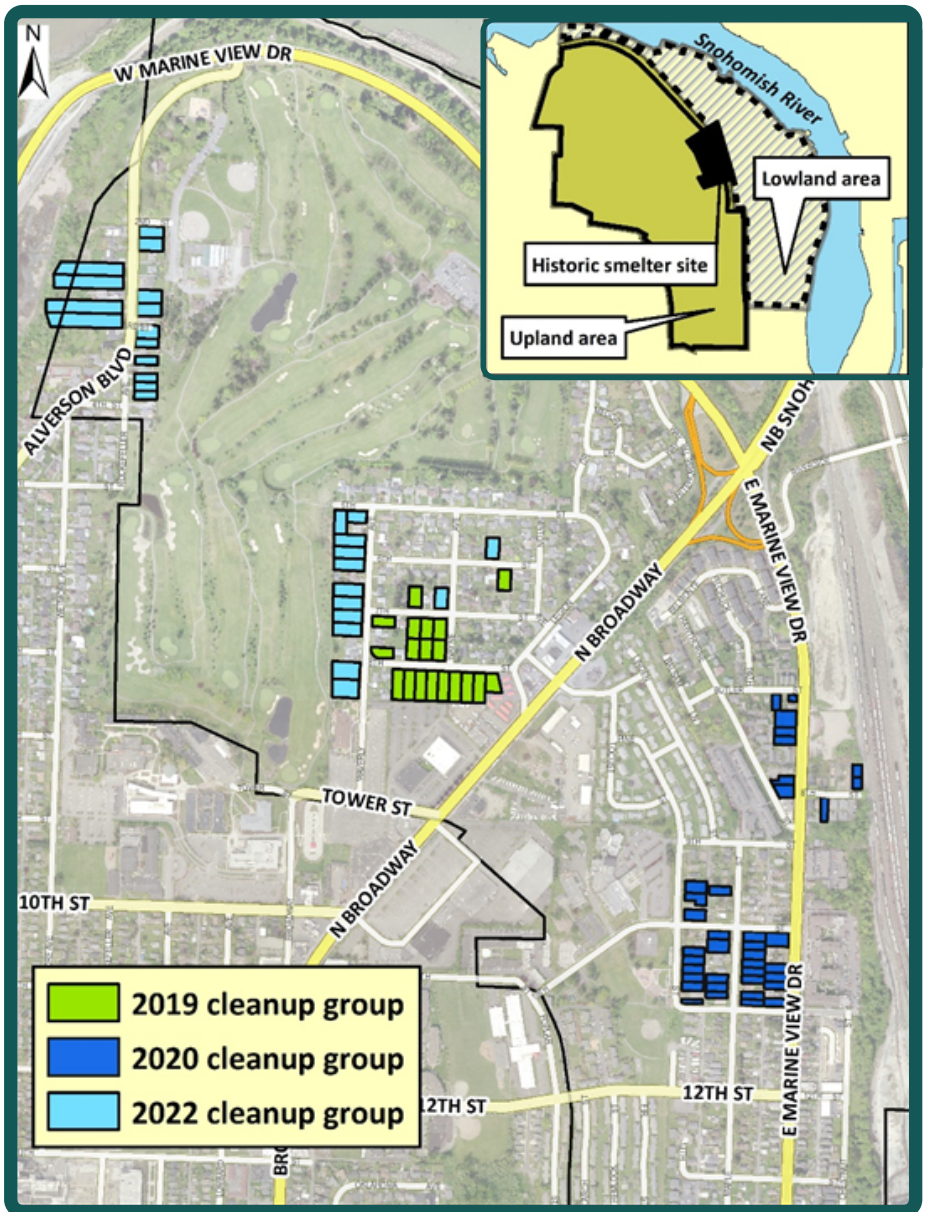


- Soil cleanup is underway and expected to finish Spring 2024.
- Landscape care workshops will be held as construction concludes.

2022 cleanup group



- All cleanup plans are finalized.
- Engineering designs are underway.
- Following design completion, Ecology will accept bids for doing the cleanup.
- A pre-construction meeting will be held after contractor selection.
- Soil cleanup is scheduled for 2024.



The locations of the three active cleanup groups in Upland area of the Everett Smelter Cleanup Project.


Sign up for soil sampling. It's free!

Another round of free soil sampling is happening now. Sign up today! 94% of all residential properties have been sampled. Find the access agreement on our webpage at <https://bit.ly/Ecology-2023AA>. You can also request one by calling the hotline at (425) 446-1024.


32

more residential properties need sampling in the Everett Smelter cleanup area.


Returning your access agreement



Mail it.
Everett Smelter Project
PO Box 330316
Shoreline, WA 98133



Take a photo.



Download the form.*

Email forms to
Shreejita.Basu@ecy.wa.gov

* <https://bit.ly/Ecology-2023AA>

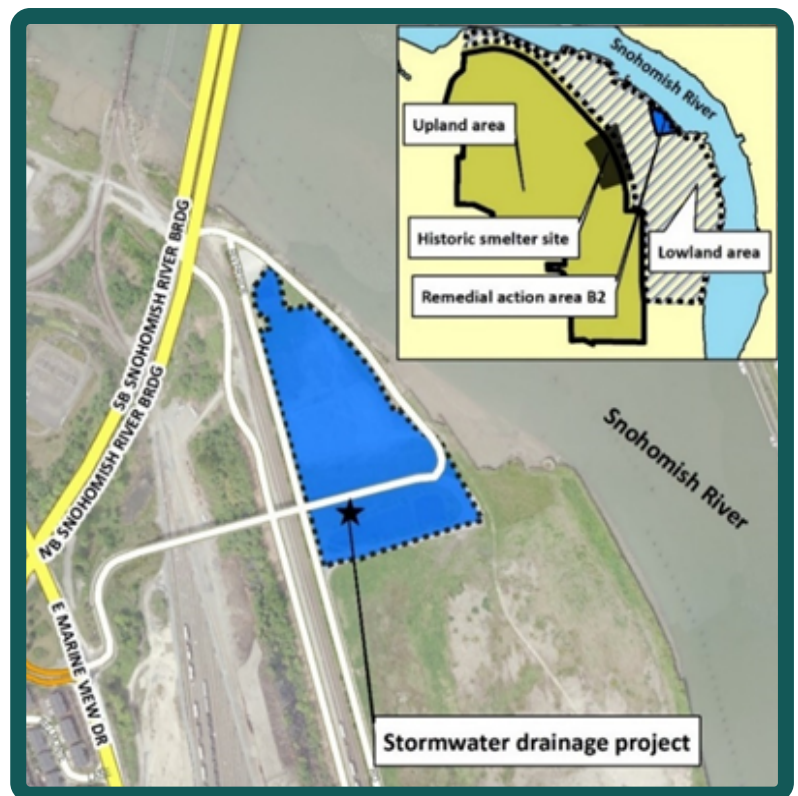
The Everett Smelter cleanup team accepts soil sampling enrollment forms by mail or email.

Improving stormwater drainage in the Smelter lowland area

This year, Ecology worked with the City of Everett (City) on improvements to the existing stormwater drainage system in northeast Everett. This system of drains and pipes carries rainwater underground from the surrounding area into the Snohomish River. Ecology inspected these stormwater pipes in 2016 and found small cracks. These cracks could allow groundwater to enter the drainage system that flows into the Snohomish River. This drainage system is within the Everett Smelter Cleanup Site, and groundwater could have arsenic contamination.

To protect the Snohomish River and communities that rely on it, Ecology and the City installed the first phase of liners inside the cracked pipes in 2023 to prevent groundwater from entering the system. The second (and final) phase of liners will be installed late Fall 2023.

The City also installed fencing along E. Marine View Dr. at the top of the steep slope above the railroad tracks to limit access to contaminated soil on the steep slope.



The stormwater system work area (area B2) is along the Snohomish River, just east of the Snohomish River Bridge.

Toxics Cleanup Program
PO Box 330316
Shoreline, WA 98133-9716

Everett Smelter Project: Fall 2023 updates

Take these steps to protect your family from contaminated soil!



Wash your hands well after handling soil.



Grow veggies in raised beds. Wash before eating.



Wear gloves. Wash dirty clothes separately.



Mop, damp dust and vacuum often inside.



Take your shoes off in the house.



Brush and bathe your pet often. Give pets their own beds.

Cleaning your hands, veggies, pets, and home are easy ways to protect you and your family from arsenic contamination in soil.

ADA accessibility: To request an ADA accommodation, contact Ecology by phone at 425-229-3683 or email at Meredith.Waldref@ecy.wa.gov, or visit ecology.wa.gov/Accessibility. For Relay Service or TTY call 711 or 877-833-6341.