

Lower Duwamish Cleanup Sites Update



CONTACTS & INFORMATION

Public Involvement Coordinator:

Augie Nuszer
LDW@ecy.wa.gov
 425-533-5537

For more information about site cleanups and source control, visit our website:

[Lower Duwamish Waterway - Washington State Department of Ecology](#)

Join our email list for regular updates!

[Washington Department of Ecology \(govdelivery.com\)](#)

Cleaning up contaminated land helps prevent pollutants from reaching the Lower Duwamish Waterway

Ecology is leading the effort to clean up sources of contamination from the upland area surrounding the Lower Duwamish Waterway (LDW) Superfund Site. This is called 'LDW Source Control'.

To conduct LDW Source Control, we find sources of contamination and take actions to stop or reduce them before they reach the LDW. It's a crucial part of our commitment to support the U.S. Environmental Protection Agency's (EPA) LDW sediment cleanup actions. The near-term goal of LDW Source Control is to address significant sources of contaminants to the LDW enough so that EPA's comprehensive in-waterway sediment cleanup actions can begin. Our long-term goal is to minimize the risk of recontaminating sediments and restore water quality in the river.

Contaminated site investigation and cleanup is one of many LDW Source Control actions that Ecology leads. In addition, our work includes controlling stormwater discharges through business inspections, monitoring of discharges, best management practices, stormwater treatment technologies; education; and agency coordination. Contaminants in the soil and groundwater in land around the LDW pose a risk to human health and the environment. They could find their way into the river through groundwater discharges, stormwater runoff, soil or bank erosion, and other pathways.

Upstream to downstream

EPA divides the 5-mile stretch of the Duwamish River into three distinct sections known as the "Upper Reach" (farthest upstream portion of the LDW), "Middle Reach", and "Lower Reach" (downstream portion, to the southern tip of Harbor Island). The remaining in-water sediment cleanup actions will generally occur consecutively, beginning in the Upper Reach, continuing to the Middle Reach, then the Lower Reach. That way, there's less potential for cleaned up sediments to be recontaminated due to river flows transporting dirty sediments from upstream to downstream. We prioritize our range of LDW Source Control efforts to support EPA's upstream to downstream sediment cleanup approach. However, we perform LDW Source Control work in every reach.

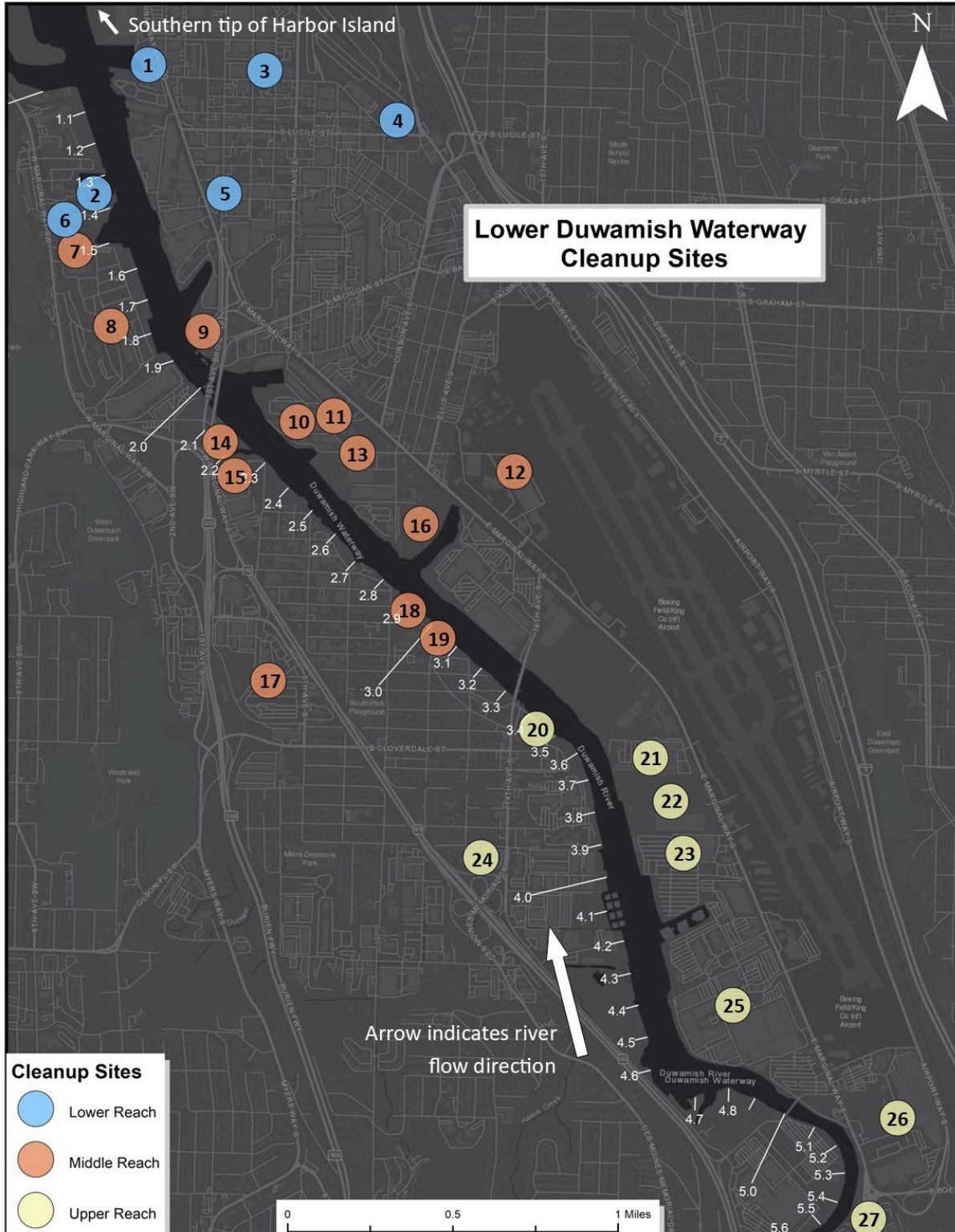
Cleanup Oversight

We actively oversee the cleanup of 25 sites in the LDW Source Control area through a legal agreement following the cleanup process defined in the State Model Toxics Control Act (MTCA). Our Toxics Cleanup Program currently oversees 21 cleanup sites and our Hazardous Waste and Toxics Reduction Program oversees 4 sites. Other upland contaminated sites are cleaned up independently through Ecology's Voluntary Cleanup Program or have EPA oversight under federal laws and processes.

Toxics Cleanup Program

Progress!

The 25 formal cleanup sites and two sites in formal negotiations moving through the MTCA cleanup process are indicated on this figure and briefly summarized below with each site's status. The numbers on the map below correspond to specific sites. More site information is on pages 3 - 11.





5055 E Marginal Way, Seattle

1 Snopac Property

Agreed Order: 2019

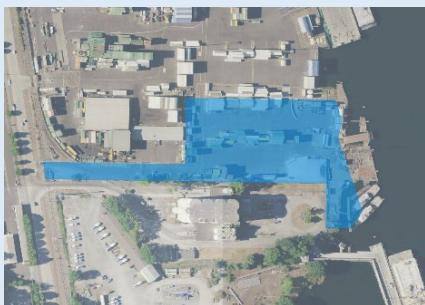
CSID: 12463

Status: Remedial Investigation and Interim Action complete; Feasibility Study in progress

Previous uses: Commercial warehousing; sandblast grit disposal; fish processing

Current uses: Construction site

Contaminants of concern: PCBs, PAHs, petroleum hydrocarbon constituents, tributyltin, metals



5658 W Marginal Way SW, Seattle

2 Duwamish Shipyard

Agreed Order: 2010

CSID: 54

Status: Remedial Investigation complete; Feasibility Study in progress

Previous uses: Repair and maintenance of floating vessels

Current uses: Shipping container storage and truck access

Contaminants of concern: PCBs, PAHs, SVOCs, tributyltin, dioxins, furans, oil, metals



220 S Dawson St, Seattle

3 General Electric Aviation Div

Consent Decree: 2014

CSID: 2446

Status: Implementing Cleanup Action Plan

Previous uses: Servicing aircraft parts; warehouse

Current uses: Office space

Contaminants of concern: CVOCs, metals, fuels, oils



734 S Lucile St, Seattle

4 Burlington Environmental LLC Georgetown

Agreed Order: 2010; amended 2015

CSID: 2622

Status: Implementing Cleanup Action Plan; several Interim Actions have occurred beginning in 1991

Previous uses: Hazardous waste treatment and storage facility

Current uses: Facility closed (2003); receipt and short-term storage of small quantities of wastes

Contaminants of concern: PCBs, VOCs, SVOCs, petroleum hydrocarbons



Between 4th Ave S and Duwamish Waterway

5 West of 4th

Agreed Order: 2014; amended 2017

CSID: 12260

Status: Supplemental Feasibility Study in progress; pilot studies and sediment porewater sampling completed; several Interim Actions have occurred beginning in 2007

Previous uses: Hazardous waste treatment and storage facility; zinc die-casting

Current uses: Facility closed in 2003; metal plating and fabrication of metal containers

Contaminants of concern: CVOCs, metals



5900 W Marginal Way SW, Seattle

6 Glacier Northwest Inc

Agreed Order: 2009

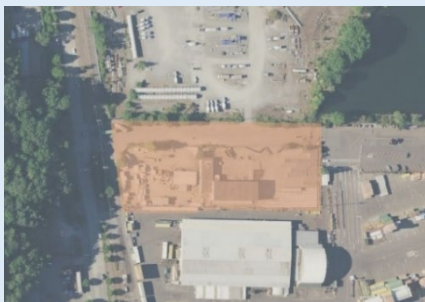
CSID: 599

Status: Remedial Investigation and Feasibility Study in progress

Previous uses: Manufacturing of activated charcoal, resins, and glues

Current uses: Cement storage and distribution

Contaminants of concern: PCBs, PAHs, VOCs and SVOCs, petroleum hydrocarbons, dioxins, furans, metals



6000 W Marginal Way, Seattle

7 Port of Seattle N Terminal 115

Agreed Order: 2011

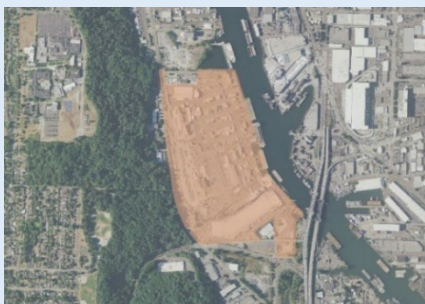
CSID: 1229

Status: Remedial Investigation in progress

Previous uses: Tin reclamation

Current uses: Lumber distribution; vehicle storage

Contaminants of concern: PAHs, SVOCs, petroleum, metals



6020 W Marginal Way, Seattle

8 Terminal 115 Plant 1

Agreed Order: 2020

CSID: 11307

Status: Remedial Investigation Work Plan in progress

Previous uses: Aircraft manufacturing, including plating, assembly, engine and fuel testing; metal working; concrete production; land filling; former river channel

Current uses: Retail fuel sales; cargo transfer; seafood processing; limited vehicle and cargo container maintenance

Contaminants of concern: VOCs, SVOCs, petroleum, metals



6365 1st Ave S, Seattle

9 Duwamish Marine Center

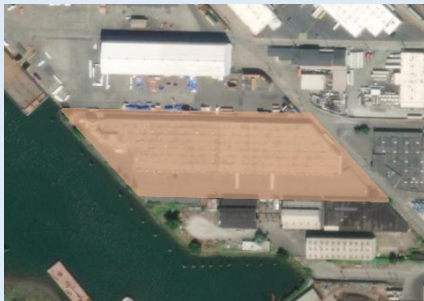
Agreed Order: 2011 **CSID:** 4146

Status: Remedial Investigation complete; Feasibility Study in progress

Previous uses: Repair and maintenance of floating vessels; junk dealer; construction services; barge shipping terminal

Current uses: Tug and barge operations; metal fabrication

Contaminants of concern: PCBs, PAHs, oil, metals



6901 Fox Ave S, Seattle

10 Dawn Food Products

Agreed Order: Under negotiation **CSID:** 16678

Status: Agreed Order and Remedial Investigation Work Plan in progress

Previous uses: Ship building; sheet metal fabrication; generator and thermostat manufacturing; paint spraying; storage; offices

Current uses: Food warehousing

Contaminants of concern: PAHs, petroleum, VOCs, metals



6900 Fox Ave S, Seattle

11 Fox Ave Building

Agreed Order: 1991, 2009, and 2012 **CSID:** 5082

Status: Remedial Investigation and Feasibility Study complete; implementing Cleanup Action Plan; Interim Action occurred in 2009; Five-Year Periodic Review complete

Previous uses: Chain manufacturing; chemical and petroleum repackaging and distribution

Current uses: Chemical distribution

Contaminants of concern: CVOCs, pentachlorophenol, oil, benzene



7370 E Marginal Way S, Seattle

12 North Boeing Field Georgetown Steam Plant

Agreed Order: 2008 **CSID:** 4765

Status: Remedial Investigation in progress; Interim Action occurred in 2011; Interim Action Work Plan public comment period in 2022; Interim Action in progress

Previous uses: Electrical power generation; aircraft manufacturing, maintenance, and research

Current uses: Aircraft manufacturing, research, and delivery; jet fuel bulk storage

Contaminants of concern: PCBs, PAHs, petroleum hydrocarbons, VOCs, SVOCs, jet fuel, phthalates, metals



730 S Myrtle St, Seattle

13 Whitehead Tyee

Agreed Order: 2016

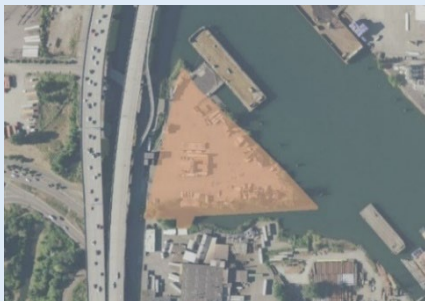
CSID: 12115

Status: Remedial Investigation Work Plan in progress; Interim Action occurred in 2018

Previous uses: Lumber finishing; refuse burning; wood treating

Current uses: Truck and container storage; light maintenance on containers

Contaminants of concern: PCBs, PAHs, VOCs, pentachlorophenol, petroleum, dioxins, furans, metals



7100 2nd Ave SW, Seattle

14 Douglas Management Dock

Agreed Order: 2011

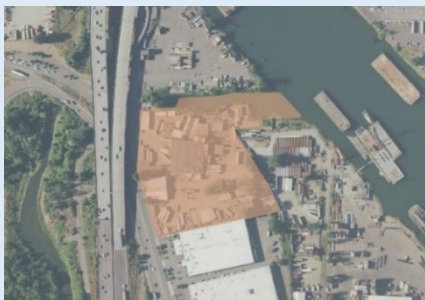
CSID: 6967

Status: Remedial Investigation complete; Feasibility Study in progress

Previous uses: Sand and gravel batch plant; school bus parking and maintenance

Current uses: Storage of equipment and shipping containers

Contaminants of concern: PCBs, oil, metals



7152 1st Ave S, Seattle

15 Industrial Container Services WA LLC

Agreed Order: 2010

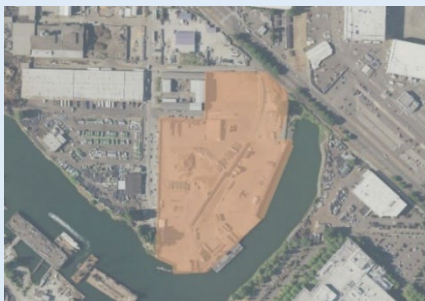
CSID: 62

Status: Remedial Investigation complete; Feasibility Study in progress

Previous uses: Cleaning and recycling of used storage drums, some used for hazardous wastes

Current uses: Cleaning and recycling of used storage drums

Contaminants of concern: PCBs, PAHs, VOCs, pesticides, oil, metals



7400 8th Ave S, Seattle

16 Crowley Marine Services 8th Ave S

Agreed Order: 2009

CSID: 2520

Status: Remedial Investigation complete; Feasibility Study in progress

Previous uses: Manufacturing of pipe, chain, hydraulic equipment, and concrete; machinery and scrap iron storage; sawmill; lumber distribution; creosote wood treatment

Current uses: Transloading and loading of contaminated soils and dredge sediments from trucks and barges onto rail cars

Contaminants of concern: PAHs, metals



8200 2nd Ave S, Seattle

17 South Park Landfill

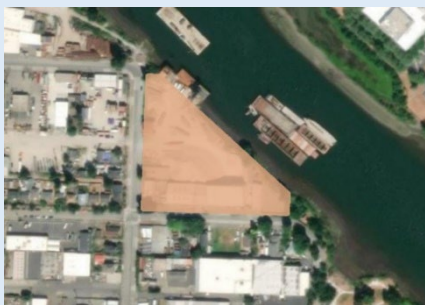
Agreed Order: 2009; **Consent Decree:** 2019 **CSID:** 1324

Status: Remedial Investigation and Feasibility Study complete; Consent Decree and Cleanup Action Plan amendment in progress; Interim Actions occurred in 2016 and 2021.

Previous uses: Landfill; truck/equipment storage; auto wrecking

Current uses: Solid waste transfer station; commercial businesses; school bus parking

Contaminants of concern: CVOCs, VOCs, landfill gas, petroleum hydrocarbons, oil, metals



816 S Kenyon St & 7814 8th Ave S, Seattle

18 Independent Metals Plant 2

Agreed Order: 2022 **CSID:** 12300

Status: Remedial Investigation Work Plan in progress

Previous uses: Gas station; work boat manufacturing; scrap and recycled metal handling; log processing

Current uses: Light industrial

Contaminants of concern: PCBs, PAHs, petroleum hydrocarbons, tetrachloroethylene, trichloroethylene, metals



7900 10th Ave S, Seattle

19 Duwamish Waterway Park

Agreed Order: Under negotiation **CSID:** 15139

Status: Agreed Order and Remedial Investigation Work Plan in progress

Previous uses: Residential and commercial

Current uses: Public park and commercial

Contaminants of concern: PCBs, PAHs, metals



8604 Dallas Ave S, Seattle

20 South Park Marina

Agreed Order: 2019 **CSID:** 2858

Status: Remedial Investigation Work Plan completed. Field investigations in progress

Previous uses: Marina (including boat repair, maintenance, storage); drum cleaning/reconditioning operations; radiator repair; gas station

Current uses: Marina with boat storage and repair; marine supplies retail sales; automobile tire sales and installation

Contaminants of concern: PCBs, PAHs, VOCs, dioxins, furans, phthalates, pesticides, oil, metals



8531 E Marginal Way S, Tukwila

21 Jorgensen Forge Corp

Agreed Order: 2007 and 2017

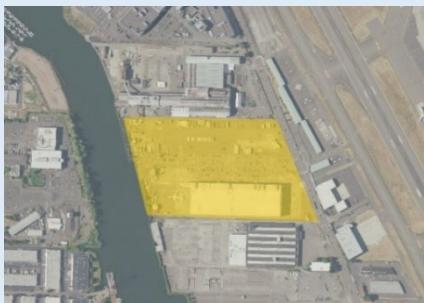
CSID: 3689

Status: Remedial Investigation in progress; Interim Action occurred in 2014

Previous uses: Fabrication of structural steel, tractor, and road equipment; manufacturing of Navy vessels and aircraft parts; steel distribution

Current uses: Facility being demolished for future reuse

Contaminants of concern: PCBs, PAHs, VOCs, petroleum, metals, per and polyfluoroalkyl substances



8701 E Marginal Way S, Tukwila

22 Boeing Isaacson Thompson

Agreed Order: 2010

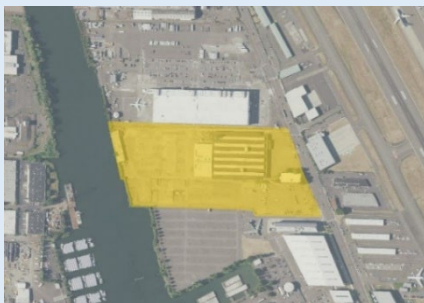
CSID: 1944

Status: Remedial Investigation complete. Feasibility Study in progress

Previous uses: Aircraft manufacturing

Current uses: Aircraft manufacturing

Contaminants of concern: PCBs, PAHs, VOCs, SVOCs, petroleum hydrocarbons, metals



8801 E Marginal Way S, Tukwila

23 8801 E Marginal Way S

Agreed Order: 2006 (sediment); 2008 (upland)

CSID: 5056

Status: Remedial Investigation complete; Feasibility Study and Interim Action Work Plan finalized; Cleanup Action in progress since 2021

Previous uses: Truck manufacturing

Current uses: None (under development)

Contaminants of concern: PCBs, PAHs, VOCs, SVOCs, petroleum hydrocarbons, metals



1231 S Director S, Seattle

24 Precision Engineering Inc.

Agreed Order: 2020

CSID: 4532

Status: Remedial Investigation in progress

Previous uses: Manufacturing of large marine items, including propellers and blade assemblies; services including grinding, polishing, chrome plating, milling, welding and coating

Current uses: Warehouse for heavy duty hardware, machine tools, construction supplies and surplus equipment

Contaminants of concern: Trichloroethene (TCE), hexavalent chromium, other metals, petroleum



9725 E Marginal Way S, Tukwila

25 Boeing Developmental Center

Agreed Order: 2019

CSID: 5059

Status: Remedial Investigation in progress; Interim Action occurred in 2019

Previous uses: Various commercial; industrial and agricultural uses

Current uses: Primarily research and development for aircraft, such as structural testing of hydraulic systems; coating development; 3D printing

Contaminants of concern: PCBs, PAHs, VOCs, total petroleum hydrocarbons, metals



3301 S Norfolk St, Seattle

26 Emerald Gateway

Agreed Order: 2020

CSID: 6584

Status: Interim Action in progress

Previous uses: Commercial warehousing; truck maintenance and repair operations; truck refueling activities; automobile wrecking and parts salvaging; gasoline service station

Current uses: Commercial warehousing

Contaminants of concern: PCBs, PAHs, petroleum hydrocarbon constituents, metals



10805 Tukwila International Blvd, Tukwila

27 Boeing Field Chevron

Agreed Order: 2015

CSID: 7030

Status: Remedial Investigation complete; Feasibility Study and Feasibility Pilot Study Work Plan in progress

Previous uses: Service station with underground storage of gasoline

Current uses: Service station with underground storage of gasoline

Contaminants of concern: Benzene, gasoline, diesel

Acronyms:

CVOs: chlorinated volatile organic compounds

PAHs: polycyclic aromatic hydrocarbons

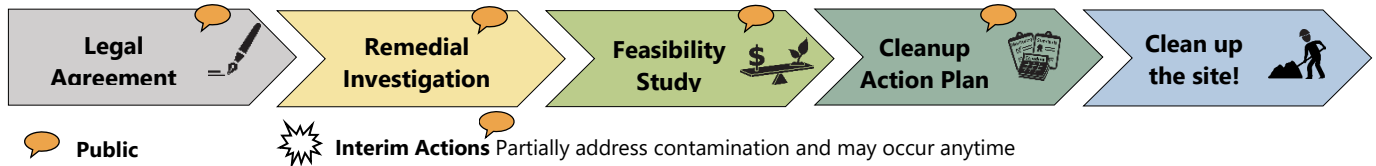
PCBs: polychlorinated biphenyls

SVOCs: semi volatile organic compound

VOCs: volatile organic compound

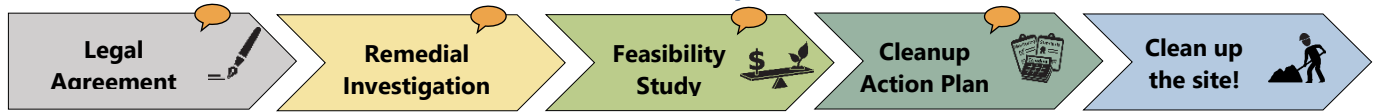
Note: The site diagrams show the general area of the cleanup site as it is currently known by Ecology.

Lower Duwamish Waterway Formal Sites Status




	Current Status	Site Name
1	Feasibility Study in progress 2019 → → → 2020	Snopac Property
2	Feasibility Study in progress 2010 → → →	Duwamish Shipyard
3	Implementing Cleanup Action Plan 2014 → → → → → 2007	General Electric Aviation Div
4	Implementing Cleanup Action Plan 2010 → → → → → 1991	Burlington Environmental LLC Georgetown
5	Feasibility Study in progress 2014 → → → 2007	West of 4 th
6	Remedial Investigation and Feasibility Study in progress 2009 → → →	Glacier Northwest Inc.
7	Remedial Investigation in progress 2011 → →	Port of Seattle N Terminal 115
8	Remedial Investigation Work Plan in progress 2020 → →	Terminal 115 Plant 1
9	Feasibility Study in progress 2011 → → →	Duwamish Marine Center
10	Agreed Order and Remedial Investigation Work Plan in progress In progress → →	Dawn Food Products
11	Implementing Cleanup Action Plan 1991, 2009 & 2012 → → → → → 2009	Fox Ave Building
12	Remedial Investigation in progress 2008 → → → 2011 & 2023	North Boeing Field Georgetown Steam Plant
13	Remedial Investigation Work Plan in progress 2016 → → → 2018	Whitehead Tye

Lower Duwamish Waterway Formal Sites Status

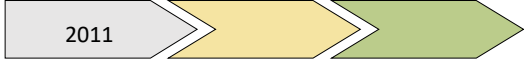


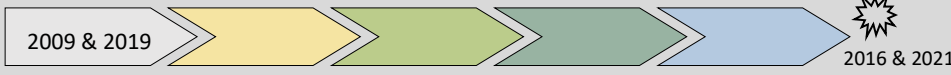


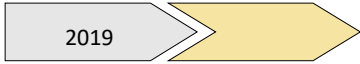
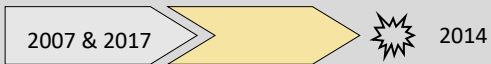



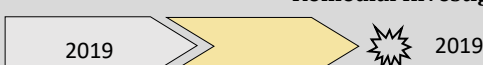
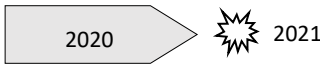
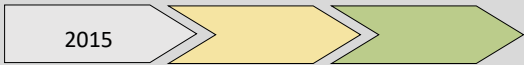


 Public

 **Interim Actions** Partially address contamination and may occur anytime

Current Status

Site Name

14	<p>2011</p> <p>Feasibility Study in progress</p> 	Douglas Management Dock
15	<p>2010</p> <p>Feasibility Study in progress</p> 	Industrial Container Services WA LLC
16	<p>2009</p> <p>Feasibility Study in progress</p> 	Crowley Marine Services 8 th Ave S
17	<p>2009 & 2019</p> <p>Implementing Cleanup Action Plan</p> 	South Park Landfill
18	<p>2022</p> <p>Remedial Investigation Work Plan in progress</p> 	Independent Metals Plant 2
19	<p>In progress</p> <p>Agreed Order and Remedial Investigation Work Plan in progress</p> 	Duwamish Waterway Park
20	<p>2019</p> <p>Remedial Investigation in progress</p> 	South Park Marina
21	<p>2007 & 2017</p> <p>Remedial Investigation in progress</p> 	Jorgensen Forge Corp
22	<p>2010</p> <p>Feasibility Study in progress</p> 	Boeing Isaacson Thompson
23	<p>2006 & 2008</p> <p>Feasibility Study and Interim Action Work Plan finalized</p> 	8801 E Marginal Way
24	<p>2020</p> <p>Remedial Investigation in progress</p> 	Precision Engineering Inc.
25	<p>2019</p> <p>Remedial Investigation in progress</p> 	Boeing Developmental Center
26	<p>2020</p> <p>Interim Action in progress</p> 	Emerald Gateway
27	<p>2015</p> <p>Feasibility Study and Feasibility Study Pilot Work Plan in progress</p> 	Boeing Field Chevron



Toxics Cleanup Program
PO Box 330316
Shoreline, WA 98133

Lower Duwamish Cleanup Sites Update

Información sobre la limpieza ambiental del Lower Duwamish Waterway:

Si le gustaría obtener este documento en español, favor de comunicarse al 360-407-6097 o preguntas@ecy.wa.gov.

有關 Duwamish 河清理信息:

如需此文件的中文版，請聯繫 Sunny Becker，聯繫方式 425-457-3842: sunny.becker@ecy.wa.gov .

Thông tin về công tác làm sạch môi trường Duwamish:

Nếu quý vị muốn nhận tài liệu này bằng tiếng Việt hoặc cần thêm thông tin, xin liên hệ ông Liêm Nguyễn: 360-407-6097, điện thư: Lngu461@ecy.wa.gov.

ព័ត៌មានអំពីការសម្អាតបរិស្ថាននៅ Lower Duwamish Waterway:

ប្រសិនបើអ្នកចង់បានឯកសារនេះជាភាសាខ្មែរ សូមទាក់ទងទៅលេខ 425-533-5537 ឬ LDW@ecy.wa.gov

Macluumaadka nadiifinta Deegaanka Biyo Mareenka ah ee Lower Duwamish:

Haddii aad rabto dhukumiintigan luuqada Khmer, fadlan la xiriir 425-533-5537 ama LDW@ecy.wa.gov

የታችኛው Duwamish ተፋሰስ የአከባቢያዊ ጽዳት መረጃ:-

ይህንን ሰነድ በ Khmer የሚፈልጉት ከሆነ፣ እባክዎን የሚያገኙት በ425-533-5537 ወይንም በ LDW@ecy.wa.gov



Want to get more involved with efforts to clean up the Duwamish River?

Contact the Duwamish River Community Coalition at contact@duwamishcleanup.org, (206) 954-0218, or visit <http://duwamishcleanup.org/>