

New Cleanup Site in Your Neighborhood

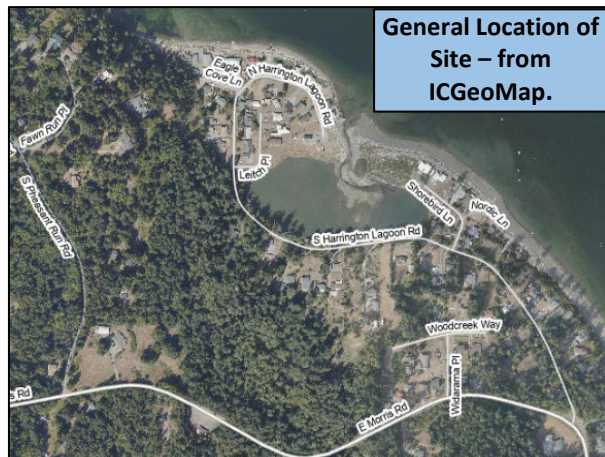
What Does Ecology Know About the Site?

Not much yet, but enough to know that more investigation is needed, based on our cleanup regulation (the Model Toxics Control Act, or MTCA). We recieved a report of chemicals called PFAS (per- and poly-fluoroalkyl substances) in a drinking water well near you. We aren't sure where the PFAS came from. We added a new cleanup site to our files, which we're calling the Harrington Lagoon Area PFAS site for now, but that might change when we find the source.

Where Can I Find More Information?

Start on the cleanup site webpage for the Harrington Lagoon Area PFAS site (<https://apps.ecology.wa.gov/cleanupsearch/site/16780>). It has all the information we have about this specific site and links to other helpful resources related to PFAS. What's In My Neighborhood (<https://apps.ecology.wa.gov/neighborhood>) is also a great place to start if you want to see cleanup sites on a map.

If you have more information on PFAS in this area, please send it to us! This will help us provide better information on the source and extent of contamination to everyone.



Harrington Lagoon Area PFAS



Visit cleanup site webpage

<https://apps.ecology.wa.gov/cleanupsearch/site/16780>



Attend a PFAS Information Meeting

Led by John Lovie, Whidbey Island Water Systems Association, panel discussion with representatives from multiple agencies.

- Coupeville Rec Hall – June 22, 2023
- Camano Multi-Purpose Center– June 23, 2023

Schedule for both meetings:

- Introduction to PFAS, 5-5:30 pm
- Listening and Collaboration Session, 6-8 pm

Email mail@whidbeywatersystems.org for more information.



Contact Ecology

Email: PFASNorthwest@ecy.wa.gov

Phone: 425-324-1658

ADA accessibility

To request an ADA accommodation, contact Ecology by phone at 360-407-6831, email ecyadacoordinator@ecy.wa.gov, or visit ecology.wa.gov/Accessibility. For Relay Service or TTY call 711 or 877-833-6341.



Toxics Cleanup Program

PO Box 330316

Shoreline, WA 98133