

# User Guide for Washington Air Quality Map



## Washington Air Quality Map

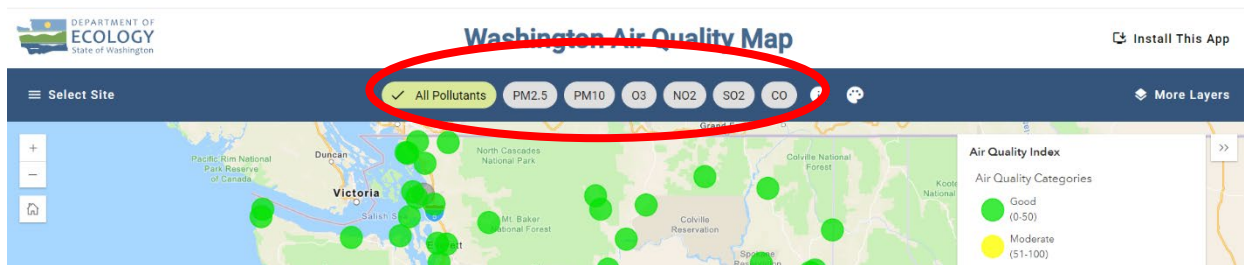
This guide is to help users navigate the [air quality map](https://ecology.wa.gov/AirQualityWA)<sup>1</sup> so they can take advantage of its improved features and functions. Each dot represents an air monitoring site where data is collected on various pollutants. The color of the dots shows [air quality index \(AQI\)](https://ecology.wa.gov/Research-Data/Monitoring-assessment/Air-Quality-Index)<sup>2</sup> levels. These are shown in the “Air Quality Index” menu on the top right of the screen.

### Navigating the map

- Scroll up and down to zoom in and out.
- Click a dot to view more detailed data from a specific site.

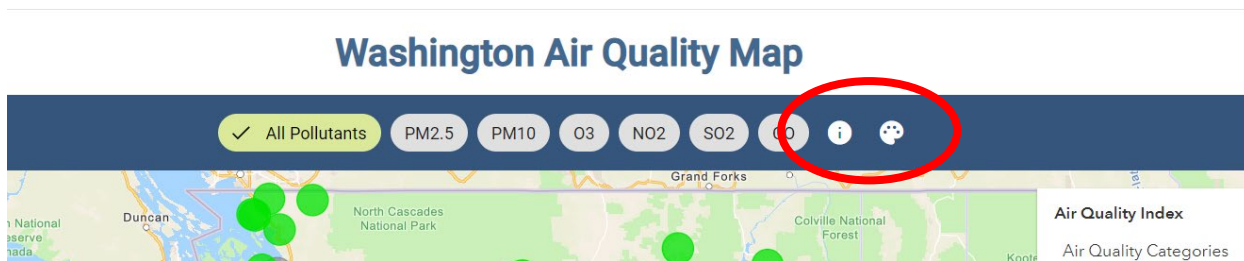
Above the map are buttons for six **common air pollutants**, called “[criteria](https://ecology.wa.gov/air-climate/air-quality/air-quality-targets/air-quality-standards#criteria)” air pollutants.<sup>3</sup>

- Clicking these shows the sites that monitor the pollutant you’ve picked.



Next to these are buttons for **more information** and **accessible colors**.

- Click the “i” button for more information about the **AQI** and **criteria pollutants**.
- The “**Enable Accessible Colors**” button makes the map easier to read for **visually-impaired users**.



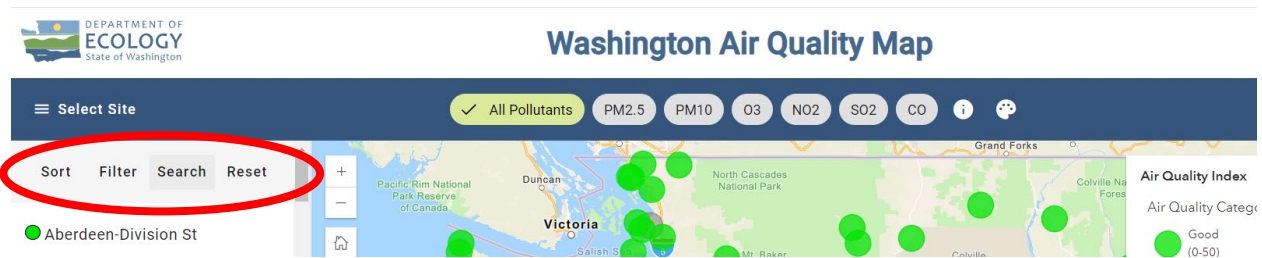
<sup>1</sup> <https://ecology.wa.gov/AirQualityWA>

<sup>2</sup> <https://ecology.wa.gov/Research-Data/Monitoring-assessment/Air-Quality-Index>

<sup>3</sup> <https://ecology.wa.gov/air-climate/air-quality/air-quality-targets/air-quality-standards#criteria>

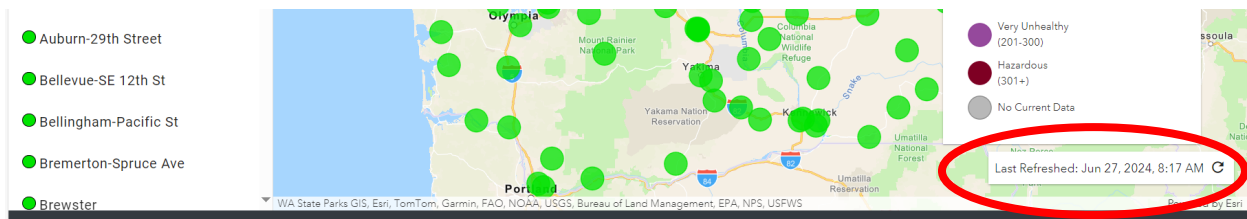
The left sidebar lists all monitoring sites.

- Click to filter by **pollutant** and/or by **county**.



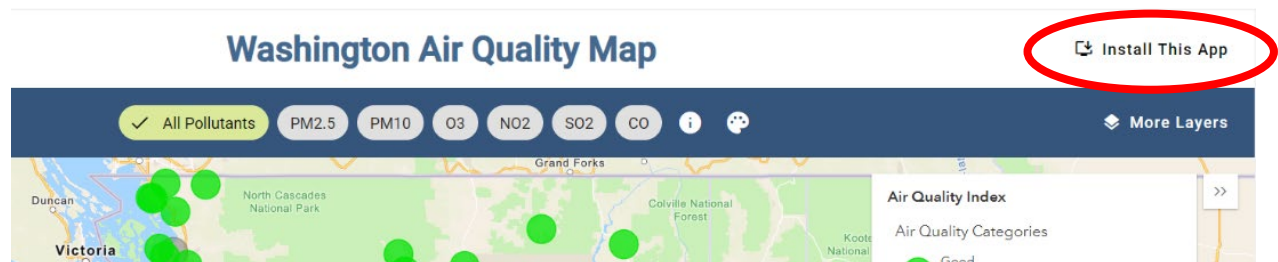
A bar on the bottom right side of the map tells you **when the data was last updated**.

- Click the refresh arrow or refresh your page for **the most current information**.



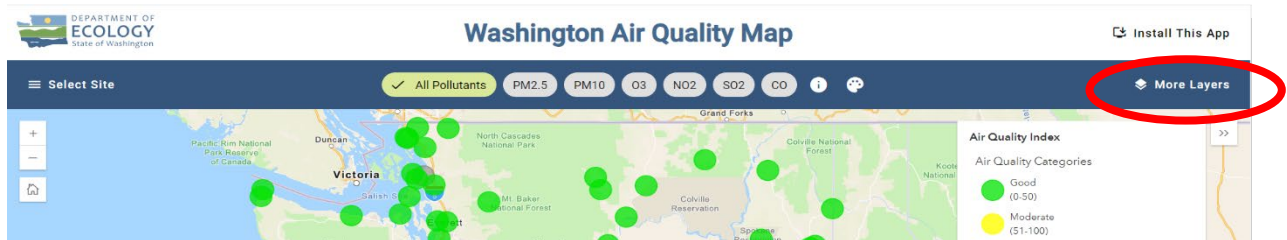
In the top right corner of the screen, it says **“Install This App.”**

- Clicking this button will download the AirQualityWA application onto your **smartphone home screen** or **computer desktop** for easy access.



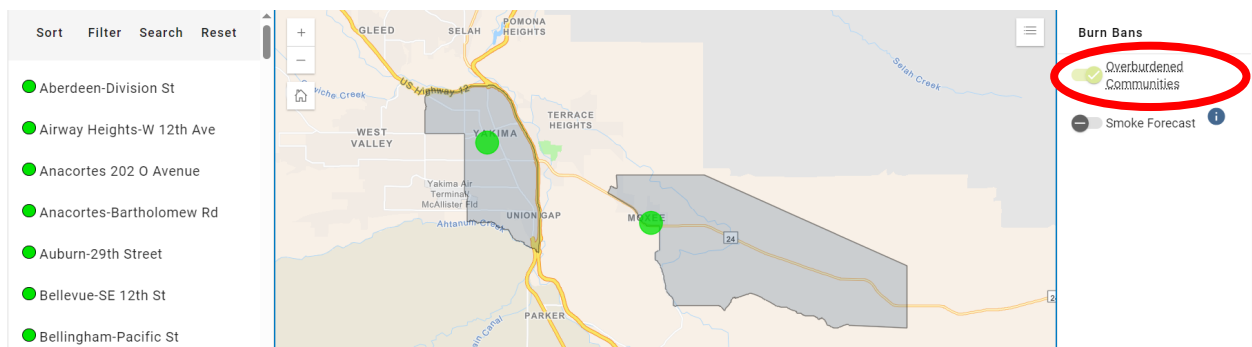
## More layers

To see air quality forecasts and burn bans, open the “**More Layers**” menu in the top right of the screen. This menu also allows you to view the borders of **overburdened communities** highly impacted by criteria air pollution.<sup>4</sup>



After selecting “Overburdened Communities” in the “More Layers” menu, **16 diamonds** will appear on the map. A diamond marks the location of an overburdened community.

- Zooming in on one of the diamonds will reveal the **borders** of the community.
- Click on the highlighted area to access **more information** about the community and our wider environmental justice initiative.

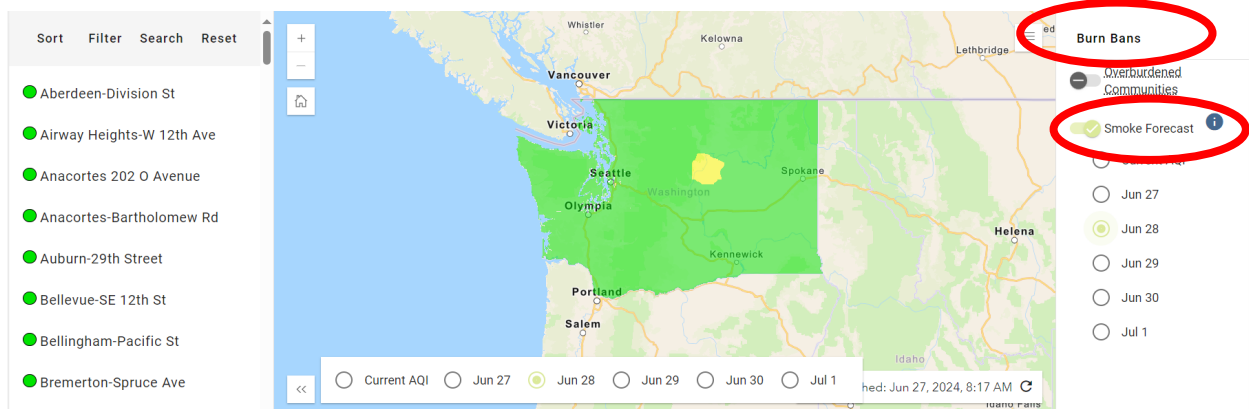


<sup>4</sup> Ecology is bolstering engagement and air monitoring efforts in these areas as part of our environmental justice work under the Climate Commitment Act.

Selecting **“Smoke Forecast”** in the **“More Layers”** menu will display a **statewide smoke forecast**. The colors of the forecast map align with the AQI categories.

- You can read more about the smoke forecast by clicking the **“i”** (information) button next to **“Smoke Forecast.”**

The **“More Layers”** menu links to a page with information about **burn bans**. There, you can learn about different kinds of burn bans and see a **list of burn bans**, sorted by county.



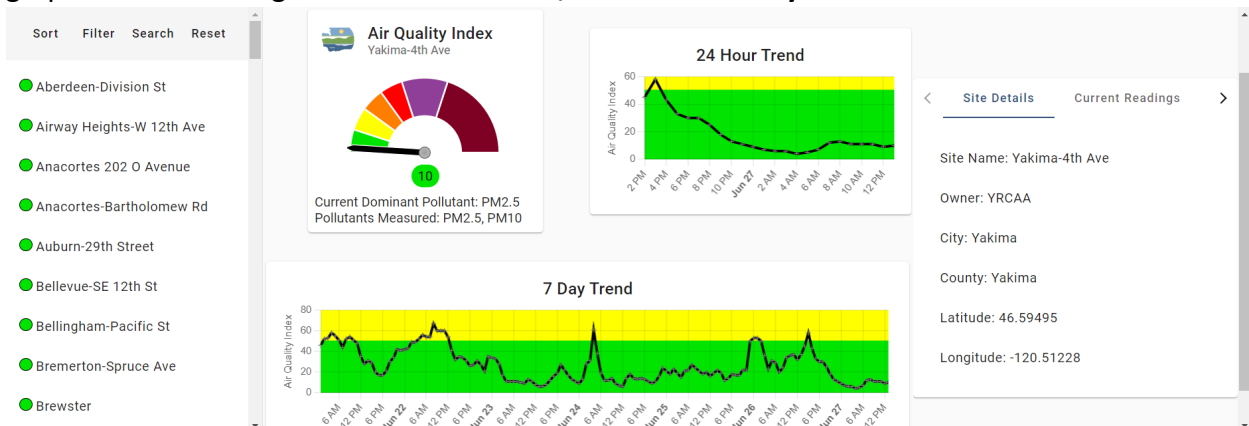
## Reporting

There are two ways to create a report in the Air Quality Map.

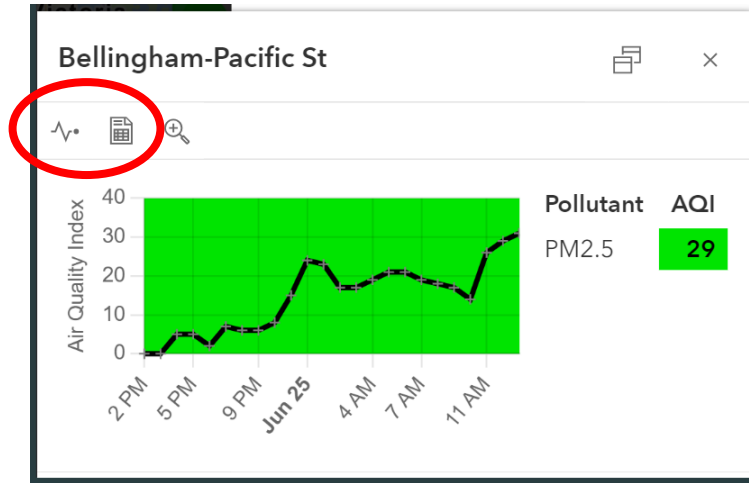
- After clicking a monitoring site, open either **“Reports”** or **“Site Info.”**
- Under **“Reports,”** you can specify the sites and time period for your air quality report.
- Under **“Site Info,”** select your report type first on the top menu bar.

Reports pull information from the monitoring sites you select and can be downloaded as Excel spreadsheets. When comparing hourly data from multiple sites, **you can only select pollutants measured at all selected sites.**

The **“Site Info”** tab features additional data from the selected monitoring site. Included are two graphs: One showing a **24-hour AQI trend**; the other a **7-day AQI trend**.



To access reporting on a smartphone or tablet, click either **“Site Info”** (icon on the left) or **“Reports”** (icon on the right). These two icons are labeled on the desktop application.



## ADA Accessibility

The Department of Ecology is committed to providing people with disabilities access to information and services by meeting or exceeding the requirements of the Americans with Disabilities Act (ADA), Section 504 and 508 of the Rehabilitation Act, and Washington State Policy #188.

To ask for ADA accommodation, email [aqpubs@ecy.wa.gov](mailto:aqpubs@ecy.wa.gov) or call 360-407-6800, 711 (relay service), or 877-833-6341 (TTY).