

Plantation Rifle Range May 2024: Documents Available for Review and Comment



Figure 1: Closed firing stations at Plantation Rifle Range.

Comments accepted

May 6 – June 21, 2024

For more information & how to comment online

ecology.wa.gov/PRRcomments

To comment by mail

Christa Colouzis, Site Manager
Department of Ecology
Northwest Region Office
P.O. Box 330316
Shoreline, WA 98133
christa.colouzis@ecy.wa.gov
425-324-1850

Site information

Webpage:

ecology.wa.gov/PRRcomments

Facility Site ID: 21444552

Site Cleanup ID: 15182

We want to hear from you!

We're overseeing the cleanup of contamination at Plantation Rifle Range, located at 5102 Samish Way, in Bellingham, Washington. We invite you to review and comment on the following documents:

- **Draft Permit:** This Permit Lite is a dangerous waste corrective action permit that allows environmental cleanup at the site to continue.
- **Draft Public Participation Plan (PPP):** The draft PPP encourages community involvement in cleanup decisions.

Visit ecology.wa.gov/PRRcomments to view these documents.

Need help?

Contact Janelle Anderson, Community Outreach Specialist, at 425-301-6454 or janelle.anderson@ecy.wa.gov.

Public meeting

At this time, there are no public meetings scheduled for this comment period. To request a public meeting, please call 425-301-6454 or email janelle.anderson@ecy.wa.gov.

Land use

Whatcom County Parks & Recreation operates the Plantation Rifle Range facility (the site). It opened in 1971 and is located on property owned by Bertch Timberlands, LLC. Whatcom County Parks & Recreation leases the property from Bertch Timberlands, LLC.

Site background

Plantation Rifle Range is one of two public shooting ranges in Washington. It consists of an outdoor, high-power rifle range, indoor and outdoor small-bore rifle and pistol ranges, a trap field, and a classroom. The high-power rifle range has target lines at 50, 100, 200, and 300 yards. Earthen backstops (to stop bullets) exist behind the 50- and 300-yard target lines. Ruby Creek flows along the eastern boundary of the site's high-power rifle range. Where the creek meets the 300-yard back stop, it enters a pipe running underneath the backstop. The creek re-emerges from the pipe to the southeast of the 300-yard targets.

In addition to Ruby Creek, wetlands are located within and along the east side of the high-power rifle range. Ruby Creek is a major tributary to Finney Creek, which flows into Lake Samish. Lake Samish is a drinking water supply for residents around the lake.

In 2020, the Department of Ecology (we) inspected the range and collected surface water samples. The samples indicated the presence of lead above Clean Water Act standards for aquatic life in freshwater systems. Starting in 2020, Whatcom County began conducting monthly surface water sampling at the site. In 2021, the Department of Ecology returned and took soil samples from the range floor. These samples confirmed the presence of lead.

Extensive soil sampling in 2023 detected areas of soil with lead levels well above the dangerous waste limit. Details about site contamination will be in the draft remedial investigation, available for public review later in 2024. Lead above cleanup levels must be addressed, and a draft feasibility study will compare ways to address the contaminated soil.

Besides widespread soil contamination, we found that some site surface water has lead levels above the dangerous waste limit. By the time surface water leaves the site, it has mixed with other surface water and is below dangerous waste levels. Any cleanup remedy must address the affected surface water.

Contamination

Lead is a known contaminant at Plantation Rifle Range. It has been detected in the soil, sediment, and surface water at the site. Lead is a toxic metal that impairs brain function. Exposure to lead causes noticeable developmental delays in children. For more information about lead, see [Health Effects of Lead Exposure](#),¹ a webpage by the Centers for Disease Control and Prevention.

Private drinking water wells closest to the rifle range were sampled to ensure that residents were not being exposed to lead-contaminated groundwater. Lead levels for all the wells tested were within the drinking water standards.

The cleanup process

We will follow [Washington's cleanup process](#)² to clean up the site (see next page). We are near completion of the initial Investigation phase for this site. We conducted extensive sampling, which helped us learn the extent of the contamination on the site. The next step will be to draft a feasibility study. The feasibility study evaluates the cleanup alternatives so the best option can be developed in the cleanup action plan. Developing the cleanup action plan for Plantation Rifle Range should also begin in 2024.

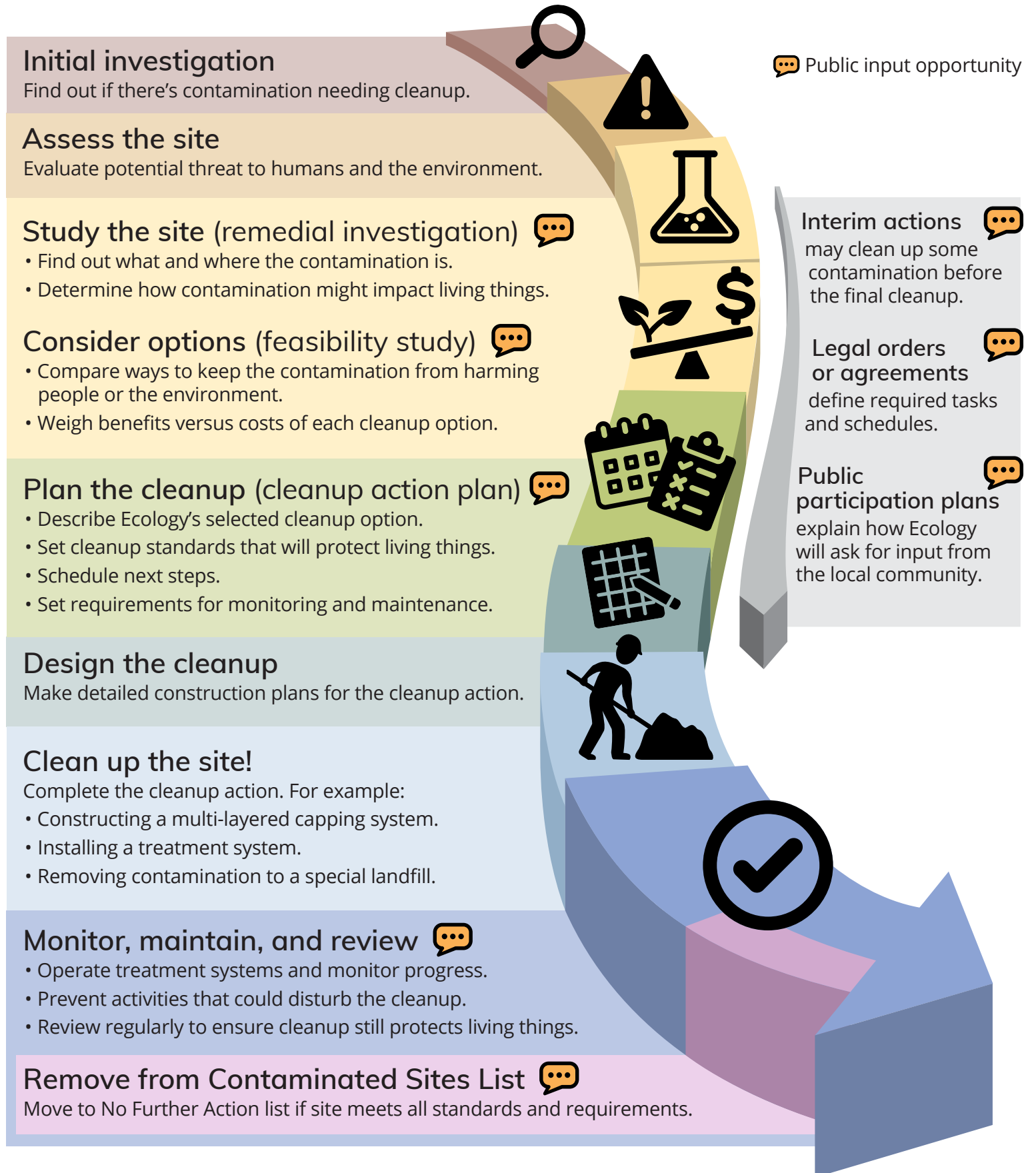
¹ www.cdc.gov/nceh/lead/prevention/health-effects.htm

² apps.ecology.wa.gov/publications/SummaryPages/1909166.html

Washington's Cleanup Process



Public participation plans and comment periods are only required for cleanups under a legal agreement with Ecology. Otherwise, all cleanups follow the same steps. The steps are defined by Washington's cleanup law, the Model Toxics Control Act.



Translations available

Español (Spanish)

El Departamento de Ecología está anunciando el período de comentarios públicos relacionado a la limpieza ambiental del sitio Plantation Rifle Range. Para solicitar una copia de este documento en español o más información sobre este sitio, por favor comuníquese con Janelle Anderson al janelle.anderson@ecy.wa.gov o 425-301-6454.

Deutsch (German)

Das Umweltministerium lädt die Öffentlichkeit ein, zur Renaturierung des Schießstands Plantation in Bellingham (Washington) Stellung zu nehmen. Für ein deutschsprachiges Exemplar dieses Dokuments oder zusätzliche Informationen senden Sie bitte eine E-Mail an janelle.anderson@ecy.wa.gov oder wählen Sie die 425-301-6454.

Русский (Russian)

Департамент экологии принимает комментарии общественности относительно действий по улучшению окружающей среды в Plantation Rifle Range в г. Bellingham, штат Вашингтон. Чтобы получить русскоязычную копию данного документа или дополнительную информацию, обращайтесь по адресу электронной почты janelle.anderson@ecy.wa.gov или по телефону 425-301-6454.

中文 (Chinese)

華盛頓州生態管理署宣布與 Plantation Rifle Range 的環境清理工作有關的公眾意見徵詢期。如要本文檔的中文版，或了解更多關於本網站的中文版信息，請聯繫 Sunny Becker 撥打 425-457-3842 或發送電子郵件至 sunny.becker@ecy.wa.gov。

日本語 (Japanese)

エコロジー局では、ワシントン州ベルリンハムの Plantation Rifle Range (プランテーションライフル射撃場) の環境浄化について、パブリックコメントの期間を設けています。この文書の日本語版を請求する場合、または詳細については、janelle.anderson@ecy.wa.gov にメールを送信するか、425-301-6454 に電話をおかけください。

แบบไทย (Thai)

Department of Ecology กำลังเปิดให้ประชาชนทั่วไปแสดงความคิดเห็นเกี่ยวกับการทำความสะอาด Plantation Rifle Range เพื่อรักษาสีเขียวแฉาดล้อม ณ เมือง Bellingham รัฐ Washington โปรดส่งอีเมลไปที่ janelle.anderson@ecy.wa.gov หรือโทรติดต่อหมายเลข 425-301-6454 เพื่อขอเอกสารฉบับนี้ฉบับภาษาไทยหรือติดต่อสอบถามข้อมูลเพิ่มเติม.

Tagalog (Tagalog)

Ang Department of Ecology ay tatanggap ng komento ng publiko tungkol sa paglilinis na kapaligiran ng Plantation Rifle Range sa Bellingham, Washington. Para humiling ng kopya ng dokumentong ito sa Tagalog o para sa higit pang impormasyon, pakisuyong mag-email sa janelle.anderson@ecy.wa.gov o tumawag sa 425-301-6454.

اللغة العربية (Arabic)

تحتفظ وزارة البيئة بفترة تعقيب عام بشأن التنظيف البيئي لميدان الرماية Plantation Rifle Range في بيلينغهام، واشنطن، لطلب نسخة من المستند باللغة العربية أو لمزيد من المعلومات، يرجى التواصل عبر البريد الإلكتروني janelle.anderson@ecy.wa.gov أو الاتصال على الرقم 425-301-6454.

Document review locations

In-person document review is available. Our office is open to the public. We encourage you to make an appointment.

Washington State Department of Ecology
Northwest Region Office
15700 Dayton Ave N.
Shoreline, WA 98133-9716
Reception (24-hour) 206-594-0000

Bellingham Public Library
Central Branch
210 Central Avenue
Bellingham, WA 98225
360-778-7323

To schedule an appointment with Ecology, please contact:

Michael Hart
michael.hart@ecy.wa.gov
Public Disclosure Coordinator

You can also review documents on our website: ecology.wa.gov/PRRcomments.

Questions about accessing information?

Contact Janelle Anderson:
425-301-6454
janelle.anderson@ecy.wa.gov

Submit comments

To submit your comments, questions, or concerns about any of these documents online, see “How to comment” at ecology.wa.gov/PRRcomments.

What happens next?

The public comment period is open from May 6 through June 21, 2024. After the comment period ends, we’ll review and consider all comments received. The documents may change based on your comments. After we consider all comments, the documents will become final.

When there are new documents about the site, we’ll notify you about additional public comment periods. The next public comment period will be for the remedial investigation and feasibility study. These are documents that explain what our sampling found and how that contamination could be addressed.

¿Qué pasa a continuación?

El periodo de comentario público está abierto desde el 6 de mayo al 21 de junio, 2024. Para someter sus comentarios, preguntas o inquietudes sobre estos documentos, visite ecology.wa.gov/PRRcomments.

Después que el periodo de comentario publico termine, revisaremos y consideraremos todos los comentarios recibidos. Los documentos pueden cambiar basado en sus comentarios. Después de considerar todos los comentarios, el documento será finalizado.

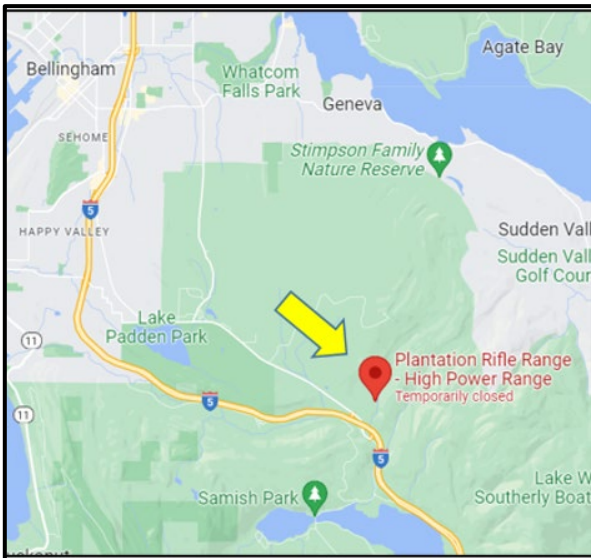
Cuando se desarrollen nuevos documentos sobre el sitio, le notificaremos sobre períodos de comentarios públicos adicionales.



DEPARTMENT OF
ECOLOGY
State of Washington

Northwest Region Office
P.O. Box 330316
Shoreline, WA 98133-9716
Tel: 206-594-0000

Join the Discussion!



Plantation Rifle range is located at 5102 Samish Way, in Bellingham, Washington.

Plantation Rifle Range Draft Documents

Ecology seeks public comment on a draft permit for Plantation Rifle Range in Bellingham, Washington.

Public Comment Period

May 6 – June 21, 2024

For More Information & How to Comment Online

Visit ecology.wa.gov/PRRcomments or email janelle.anderson@ecy.wa.gov.

Translations Inside

ภาษาไทยด้านใน

Español incluida

Внутри текст на русском языке

Deutsch innen

日本語による内部情報

Tagalog sa loob

以内是中文的有关信息

اللغة العربية في الداخل

ADA Accessibility: To request an ADA accommodation, contact Ecology by phone at 360-407-6700, email hwtrpubs@ecy.wa.gov, or visit <https://ecology.wa.gov/accessibility>. For Relay Service or TTY call 711 or 877-833-6341.