



## **Public Participation Plan**

**Treoil Industries Cleanup Site  
4242 Aldergrove Road, Ferndale  
Whatcom County**

### **Toxics Cleanup Program**

Washington State Department of Ecology  
Northwest Region Office  
Shoreline, Washington

Publication 25-09-139, February 2025



## Publication Information

This document is available on the Department of Ecology's [Treoil Industries](#)<sup>1</sup> cleanup site page.

### Cover photo credit

- Treoil Industries site, 2024, WA State Department of Ecology

### Related Information

- Cleanup Site ID: 950
- Facility Site ID: 2919

## Contact Information

### [Toxics Cleanup Program](#)<sup>2</sup>

#### Northwest Region Office

PO Box 330316  
Shoreline, WA 98133-9716  
Phone: 206-594-0000

Kristen Forkeutis, Outreach Specialist

[Kristen.Forkeutis@ecy.wa.gov](mailto:Kristen.Forkeutis@ecy.wa.gov)

425-240-4353

Sunny Becker, Site Manager

[Sunny.Becker@ecy.wa.gov](mailto:Sunny.Becker@ecy.wa.gov)

425-457-3842

## ADA Accessibility

The Department of Ecology is committed to providing people with disabilities access to information and services by meeting or exceeding the requirements of the Americans with Disabilities Act (ADA), Section 504 and 508 of the Rehabilitation Act, and Washington State Policy #188.

To request an ADA accommodation, contact the Ecology ADA Coordinator by phone at 360-407-6831 or email at [ecyadacoordinator@ecy.wa.gov](mailto:ecyadacoordinator@ecy.wa.gov). For Washington Relay Service or TTY call 711 or 877-833-6341. Visit [Ecology's website](#)<sup>3</sup> for more information.

## Language Access

The Department of Ecology offers free translation and interpretation services. If you need help in your preferred language, please call Kristen Forkeutis at 425-240-4353 and request an interpreter, or email [Kristen.Forkeutis@ecy.wa.gov](mailto:Kristen.Forkeutis@ecy.wa.gov).

---

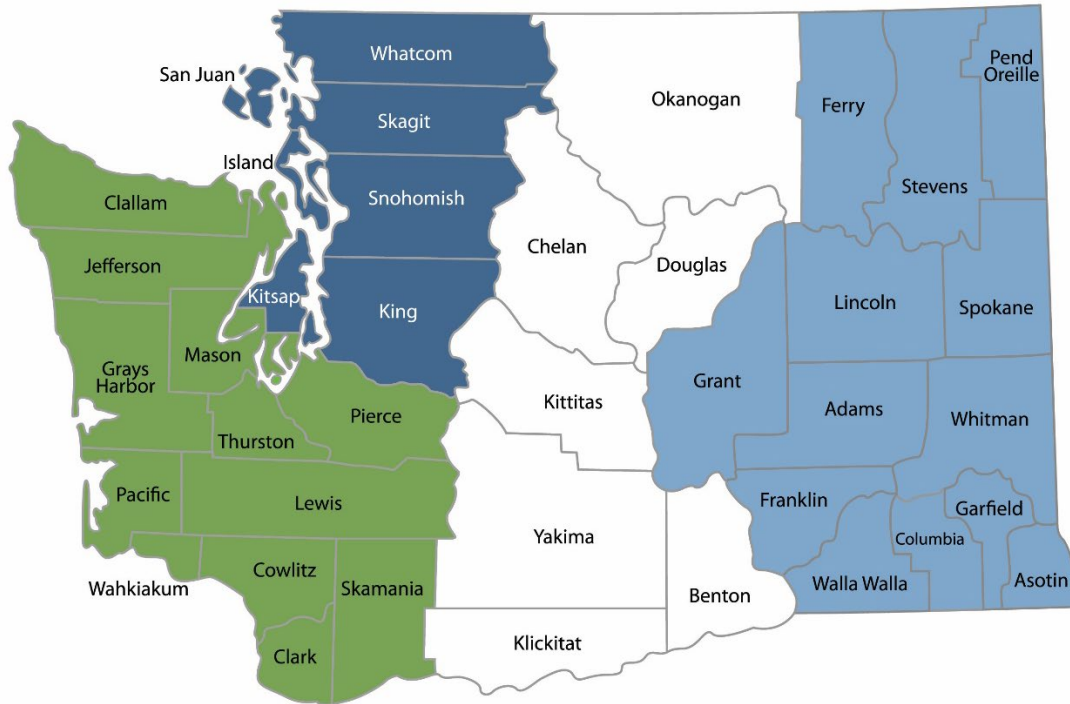
<sup>1</sup> <https://apps.ecology.wa.gov/cleanupsearch/site/950>

<sup>2</sup> <https://ecology.wa.gov/About-us/Who-we-are/Our-Programs/Toxics-Cleanup>

<sup>3</sup> <https://ecology.wa.gov/about-us/accessibility-equity/accessibility>

# Department of Ecology's Region Offices

## Map of Counties Served



|   |   |                                       |                                       |
|---|---|---------------------------------------|---------------------------------------|
| <b>Southwest Region</b><br>360-407-6300 | <b>Northwest Region</b><br>206-594-0000 | <b>Central Region</b><br>509-575-2490 | <b>Eastern Region</b><br>509-329-3400 |
|---|---|---------------------------------------|---------------------------------------|

| Region              | Counties served  | Mailing Address                        | Phone        |
|---------------------|--|--|--------------|
| <b>Southwest</b>    | Clallam, Clark, Cowlitz, Grays Harbor, Jefferson, Mason, Lewis, Pacific, Pierce, Skamania, Thurston, Wahkiakum           | PO Box 47775<br>Olympia, WA 98504      | 360-407-6300 |
| <b>Northwest</b>    | Island, King, Kitsap, San Juan, Skagit, Snohomish, Whatcom   | PO Box 330316<br>Shoreline, WA 98133   | 206-594-0000 |
| <b>Central</b>      | Benton, Chelan, Douglas, Kittitas, Klickitat, Okanogan, Yakima   | 1250 W Alder St<br>Union Gap, WA 98903 | 509-575-2490 |
| <b>Eastern</b>      | Adams, Asotin, Columbia, Ferry, Franklin, Garfield, Grant, Lincoln, Pend Oreille, Spokane, Stevens, Walla Walla, Whitman | 4601 N Monroe<br>Spokane, WA 99205     | 509-329-3400 |
| <b>Headquarters</b> | Across Washington  | PO Box 47600<br>Olympia, WA 98504      | 360-407-6000 |

# Table of Contents

|   |           |
|---|-----------|
| <b>Public Involvement in Contamination Cleanup .....</b>              | <b>6</b>  |
| Site contacts.....  | 6         |
| <b>Public Participation Activities .....</b>                          | <b>6</b>  |
| How we share information with the community.....                      | 7         |
| How to share information with us .....                                | 8         |
| Public Participation Grants .....                                     | 9         |
| <b>Site Information.....</b>  | <b>10</b> |
| Background and land use.....  | 10        |
| Contamination .....   | 12        |
| Status of cleanup .....   | 12        |
| Neighborhood.....   | 13        |
| Tribal engagement.....  | 13        |
| Environmental Justice.....  | 14        |
| <b>Washington’s Cleanup Laws .....</b>                                | <b>17</b> |
| Model Toxics Control Act.....   | 17        |
| State Environmental Policy Act.....                                   | 17        |
| <b>Plan Amendments .....</b>  | <b>17</b> |
| <b>Appendices .....</b>   | <b>19</b> |
| Appendix A. Steps in the MTCA cleanup process .....                   | 19        |
| Appendix B. EPA EJSscreen Community Report & ACS Summary Report ..... | 19        |

## List of Figures

- Figure 1:** Location of the Treoil Industries site in Whatcom County..... 13
- Figure 2:** Washington Environmental Health Disparities Map for the Treoil Industries site census tract 010501 with an environmental health risk ranking of 3..... 15
- Figure 3:** EPA EJScreen generated map of the outreach area for the Treoil Industries site ..... 16

# Public Involvement in Contamination Cleanup

The Washington State Department of Ecology (Ecology) developed this public participation plan (plan). The purpose of the plan is to promote meaningful community involvement during cleanup of the Treoil Industries cleanup site.

This plan outlines how Ecology will keep the public informed about contamination investigations and cleanup options at each stage of the process. Please review Appendix A for more information about the cleanup process. The plan also details when and how the community can participate in the cleanup process. We encourage the public to engage with the decision-making opportunities and provide input.

## Site contacts

To be included in the site record, comments about the cleanup process must be submitted during comment periods. Questions and informal comments or information about the site's history are welcome anytime.

### WA Dept of Ecology

Northwest Region Office  
PO Box 330316  
Shoreline, WA 98133-9716

Sunny Becker, Site Manager  
[Sunny.Becker@ecy.wa.gov](mailto:Sunny.Becker@ecy.wa.gov)  
425-457-3842

Kristen Forkeutis, Outreach Specialist  
[Kristen.Forkeutis@ecy.wa.gov](mailto:Kristen.Forkeutis@ecy.wa.gov)  
425-240-4353

If you are unable to reach these contacts, please visit the [Treoil Industries cleanup site page](#)<sup>4</sup> for up-to-date contact information.

## Public Participation Activities

Members of the public may ask questions, submit informal comments, or share site information at any time. Interested parties do not need to wait for a formal public comment period to contact Ecology.

However, to be included in the formal site record, comments about the site investigation, cleanup alternatives, or cleanups must be submitted during formal comment periods. In addition, the public is invited to review site documents before they become final. This is the

---

<sup>4</sup> <https://apps.ecology.wa.gov/cleanupsearch/site/950>

most direct and influential way to learn more about the site and be involved in the cleanup's decision-making.

## How we share information with the community

During specific stages of the cleanup, Ecology will mail notices about public comment periods to addresses surrounding the site. The mailing list area will vary depending on the type of contamination and where it's located. However, the list will at least include addresses within a 1/4-mile radius of the site and other interested organizations and individuals. These notices will provide general information about the site, contact information for submitting comments, and times and locations of public meetings or hearings or how to request one if not yet scheduled.

Comment period notices will be available online and at document repositories (for example at the library closest to the site). Notices may also be posted in various locations throughout the community (for example, local businesses, schools, or post offices).

Ecology may also develop documents outside of comment periods to keep the community updated on the site's status. These informational documents will be available online and print copies may be mailed to the nearby community if we feel the message warrants the associated cost and resources.

### Postal mailing list

Ecology maintains a mailing list that includes addresses within at least a 1/4-mile radius of the site and relevant local, state, and federal government contacts. All contacts receive public comment notices when draft documents are available.

We will add additional individuals, organizations, and other interested parties to the mailing list as requested. If you would like to be added to the mailing list for this site, please contact Kristen Forkeutis at 425-240-4353 or [Kristen.Forkeutis@ecy.wa.gov](mailto:Kristen.Forkeutis@ecy.wa.gov).

### Contaminated Site Register

Public comment periods, events, and other cleanup notices are published in Ecology's [Contaminated Site Register](#).<sup>5</sup> To receive the *Contaminated Site Register* by email, please [subscribe online](#),<sup>6</sup> or contact Sarah Kellington at [sarah.kellington@ecy.wa.gov](mailto:sarah.kellington@ecy.wa.gov) or 360-280-3167.

### Newspaper display ads or legal notices

We announce public comment periods and events for this site in ads or notices published in *The Bellingham Herald* newspaper. We will also publish notice on our [Public Input & Events Listing webpage](#).<sup>7</sup>

---

<sup>5</sup> <https://ecology.wa.gov/Regulations-Permits/Guidance-technical-assistance/Site-Register-lists-and-data>

<sup>6</sup> <https://ecology.wa.gov/site-register>

<sup>7</sup> <https://ecology.wa.gov/Events/Search/Listing>

## Email lists

Ecology maintains an email list to update interested persons about this site. If you would like to be added to the email list for this site, please contact Kristen Forkeutis at 425-240-4353 or [Kristen.Forkeutis@ecy.wa.gov](mailto:Kristen.Forkeutis@ecy.wa.gov).

## Ecology's website and social media platforms

We maintain a website for the [Treoil Industries site](#).<sup>8</sup> The website provides site information, and you may download cleanup documents.

We may also share information about cleanup sites through [news releases, our ECOconnect blog, and social media](#).<sup>9</sup>

## Places to see print documents

During public comment periods, you can find print documents at the following locations:

### Ferndale Public Library

2125 Main Street  
Ferndale, WA 98248  
Phone: 360-384-3647

### Washington Department of Ecology

Bellingham Field Office  
913 Squalicum Way, Unit 101  
Bellingham, WA 98225

To schedule an appointment, please contact the Bellingham Field Office administration staff at 360-255-4400 or [ECYDLBFOADMINSUPPORT@ecy.wa.gov](mailto:ECYDLBFOADMINSUPPORT@ecy.wa.gov).

If you would like to be mailed print documents, please contact Kristen Forkeutis at 425-240-4353 or [Kristen.Forkeutis@ecy.wa.gov](mailto:Kristen.Forkeutis@ecy.wa.gov).

## Signs around the cleanup site

We may also install signs displaying information about project status, traffic impacts, and health risks around the cleanup site.

## How to share information with us

We hold public comment periods and sometimes public events to learn your thoughts, opinions, and concerns about cleanup at a site. We may also identify public concerns and cleanup goals by meeting with and soliciting information from interested community members and organizations. To collaborate with us about this site, please contact Kristen Forkeutis at 425-240-4353 or [Kristen.Forkeutis@ecy.wa.gov](mailto:Kristen.Forkeutis@ecy.wa.gov).

## Public comment periods

At a minimum, the Model Toxics Control Act (MTCA, see page 17 for more information) requires 30-day comment periods to allow interested members of the public to comment on

---

<sup>8</sup> <https://apps.ecology.wa.gov/cleanupsearch/site/950>

<sup>9</sup> <https://ecology.wa.gov/about-us/who-we-are/news>



draft documents, legal agreements, and proposed cleanup actions. If there is significant interest, Ecology may extend the public comment period.

When Ecology oversees the State Environmental Policy Act (SEPA) determinations (see page 17 for more information), we hold comment periods for at least two weeks and may extend to 30 days or more when other cleanup documents are concurrently available for review.

Following a comment period, we publish all the input we received and respond to significant comments and questions, as appropriate. If the comments result in significant changes to the cleanup documents, then the documents will be revised and re-issued for public review. If the comments do not result in significant changes, the documents will become final.

## Public events

We hold public meetings, workshops, open houses, and hearings based on community interest. At meetings, workshops, and open houses, attendees can ask questions, learn more about the site, and submit written comments when a comment period is open. At a public hearing, verbal comments are transcribed for the record, and Ecology responds to them after the comment period in our response to comments.

If we have not scheduled an event, we will hold one if 10 or more people request it. This may cause us to extend a public comment period, so the event occurs during it.

Events are held at locations close to the site that meet Americans with Disabilities Act standards. Public events are always announced in advance using a variety of methods.

## Public Participation Grants

Grants may be available to neighborhood committees, non-profits, and other groups interested in the site. For contaminated sites, these funds can be used to:

- Hire an expert to help interpret technical information
- Conduct activities that enhance the public's understanding of, and participation in, the cleanup process

For more information about public participation grants, please contact Laura Busby at 360-280-5088 or [laura.busby@ecy.wa.gov](mailto:laura.busby@ecy.wa.gov) and Jill Krumlauf at 360-790-5771 or [jill.krumlauf@ecy.wa.gov](mailto:jill.krumlauf@ecy.wa.gov). You may also visit the [Public Participation Grant website](#).<sup>10</sup>

---

<sup>10</sup> <https://ecology.wa.gov/PPG>

## Site Information

### Background and land use

The site is part of a 34-acre property owned by Jagroop S. Gill and Campbell Land Corporation. A 3.5-acre section of the property has been used since the 1980s for numerous industrial operations. This primarily included processing tall oil, a byproduct of kraft paper production. Biodiesel production and other small-scale industrial operations also took place. Over the decades, the property accumulated a large amount of dangerous wastes — toxic, corrosive, ignitable, or reactive substances — that were left unsecured and often improperly stored.

### History of Environmental Investigations & Enforcement

**1989–2016:** Starting in 1989 a record of spills and poor maintenance operations began at the site. This prompted Ecology’s Water Quality Program, Ecology’s Hazardous Waste and Toxics Reduction Program, and Whatcom County Health and Community Services to perform site inspections and assessments. During this period, the property was placed on Ecology’s Contaminated Site List for confirmed contamination and was referred to as the Treoil Industries site. Ecology issued a legal administrative order in 2015, requiring them to properly identify, manage, and dispose of the waste.



Treoil Industries site,  
March 2017 before the EPA cleanup



Treoil Industries site,  
March 2017 before the EPA cleanup

**2017:** Ecology determined that the site did not meet the requirements of the administrative order. The dangerous waste storage conditions had deteriorated, causing risks to human health and the environment. At Ecology’s request, the Environmental Protection Agency (EPA) deployed an emergency response team, which removed:

- 93,000 gallons of liquid tall oil and tall oil derivative wastes
- 275 tons of contaminated soil, sludge and debris
- 6,750 gallons of crude glycerin
- 430 containers, 35 drums and nine cylinders of hazardous chemicals
- Eight cubic yards of asbestos containing material



Some areas of the site remained a concern, with spill protection measures added where possible.

**2022:** Ecology inspectors obtained court-ordered access to the site and found conditions were similar to or worse than before the 2017 cleanup. The EPA conducted a second action, which removed:

- 97,400 gallons of oily liquid from secondary containment
- 18,000 gallons of hazardous liquids
- 3,316 tons of solidified material
- 4,800 gallons of pumpable oily material
- 1,890 gallons of corrosive liquids
- Eight cubic yards of solidified hazardous materials

The EPA also demolished multiple large above-ground storage tanks, containment areas, and other structures that were being illegally used to store dangerous waste.

In addition, Whatcom County Health and Community Services removed old cars that were dumped on the site.

The 2017 and 2022 cleanup actions cost a total of approximately \$4.3 million.



Treoil Industries site,  
May 2022 before the EPA cleanup



Treoil Industries site, 2024



Treoil Industries site, 2024

### **2023–2024:**

- Ecology issued a \$900,000 penalty to Jagroop S. Gill, Campbell Land Corp., at the Treoil Industries site for failure to comply with WA’s dangerous waste laws.
- Ecology’s Toxics Cleanup Program finalized a contract with consulting firm Haley & Aldrich (HA) to begin the formal cleanup process under the Model Toxics Control Act (MTCA – see page six).

- HA began to study the site (remedial investigation) and consider cleanup options (feasibility study).
- As of December 2024, additional abandoned vehicles, garbage, debris, and other signs of illegal use have been observed on the property.

## Contamination

A history of improper storage of dangerous waste, mismanagement, and illegal dumping has resulted in site contamination. Beginning in 2023, environmental investigations assessed soil, groundwater, and surface water to determine the types and locations of contamination. These investigations identified the following contaminants were present at levels that exceeded standards under the state’s cleanup law, MTCA (see page 17).

- **Soil:** Total Petroleum Hydrocarbons (TPH), pentachlorophenol, a Semi-volatile Organic Compound, and metals (primarily chromium, copper, and lead)
- **Groundwater:** None
- **Surface Water:** None

## Status of cleanup

In 2025 Ecology will finalize the following two documents after considering all comments received during the public comment period:

- **Remedial Investigation:** Details the types and locations of contamination at the site.
- **Feasibility Study:** Explains the different cleanup methods, called alternatives, including Ecology’s preferred cleanup alternative.

The cleanup action plan will be available for review during a future public comment period.

## Neighborhood



**Figure 1:** Location of the Treoil Industries site in Whatcom County

The site is located northwest of Ferndale and south of Blaine, approximately two miles east of the Strait of Georgia and four miles northwest of the Lummi Indian Reservation. The site lies within unincorporated Whatcom County, east of bp's [Cherry Point refinery](#)<sup>11</sup> in Blaine.

The property is zoned within the [Heavy Impact Industrial \(HII\) District](#)<sup>12</sup> for uses related to processing and distributing raw materials. Areas southeast of the site are zoned as recreation open space and areas east and northeast of the site are zoned as rural residential.

## Tribal engagement

The Lummi Nation and Nooksack Indian Tribe could be affected by the contamination. The cleanup process may also uncover cultural resources. We will reach out to Tribes to offer opportunities to engage with Ecology in the cleanup process.

The Lummi Tribe who relies on natural resources in the surrounding areas have expressed concern about this site. Ecology is working with them on a government-to-government basis and considering all feedback.

---

<sup>11</sup> [https://www.bp.com/en\\_us/united-states/home/where-we-operate/washington.html](https://www.bp.com/en_us/united-states/home/where-we-operate/washington.html)

<sup>12</sup> <https://www.codepublishing.com/WA/WhatcomCounty/#!/WhatcomCounty20/WhatcomCounty2068.html#20.68.010>



## Environmental Justice

Ecology utilizes multiple resources to better understand the environmental and demographic information of the communities impacted by cleanup sites. The following environmental justice tools provide information that help our team plan for public outreach.

### Washington Environmental Health Disparity Map

The [Washington Environmental Health Disparity Map](#)<sup>13</sup> evaluates environmental health risk factors in communities.

Ecology does not interpret rankings as absolute values, and we do not use them to diagnose a community health issue or to label a community. Environmental health disparity is ranked on a scale of 1-10 (low to high) and is relative to other locations in the state. The census tract 010501 for the Treoil Industries site has an environmental health risk ranking of 3 (see Figure 2).

The Washington State Department of Health mapping tool model was “specifically adapted from CalEnviroScreen – a cumulative environmental impacts assessment mapping tool developed by CalEPA and used in California. It estimates a cumulative environmental health impact score for each census tract reflecting pollutant exposures and factors that affect people’s vulnerability to environmental pollution.

The model is based on a conceptual formula of Risk = Threat \* Vulnerability, where threat and vulnerability are based on several indicators.

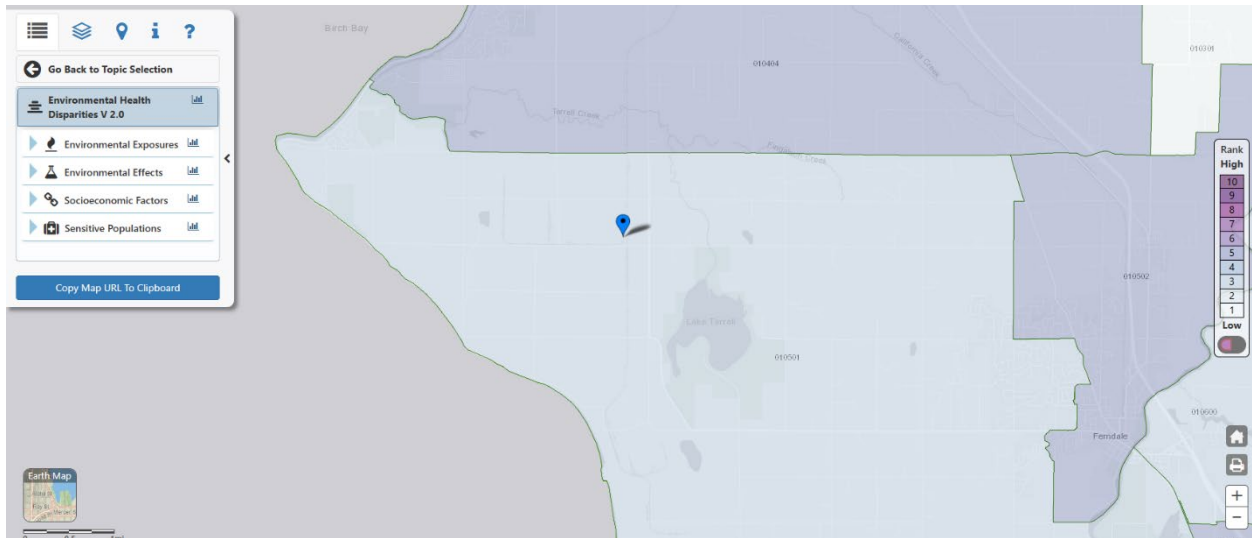
The threat is represented by indicators that account for pollution burden, which is a combination of environmental effects and environmental exposures in communities. Environmental effects include indicators that account for adverse environmental quality generally, even when population contact with an environmental hazard is unknown or uncertain. Environmental exposures include the levels of certain pollutants that populations come into contact with.

Vulnerability is represented by indicators of socioeconomic factors and sensitive populations for which there is clear evidence that they may affect susceptibility or vulnerability to an increased pollution burden. Indicators in socioeconomic factors measure population characteristics that modify the pollution burden itself. Sensitive populations refer to those who are at greater risk due to intrinsic biological vulnerability to environmental stressors.

In the model, threat is multiplied by vulnerability in order to reflect the scientific literature that indicates population characteristics often modify and amplify the impact of pollution exposures on certain vulnerable populations. The rankings help to compare health and social factors that may contribute to disparities in a community.”

---

<sup>13</sup> <https://fortress.wa.gov/doh/wtnibl/WTNIBL/>

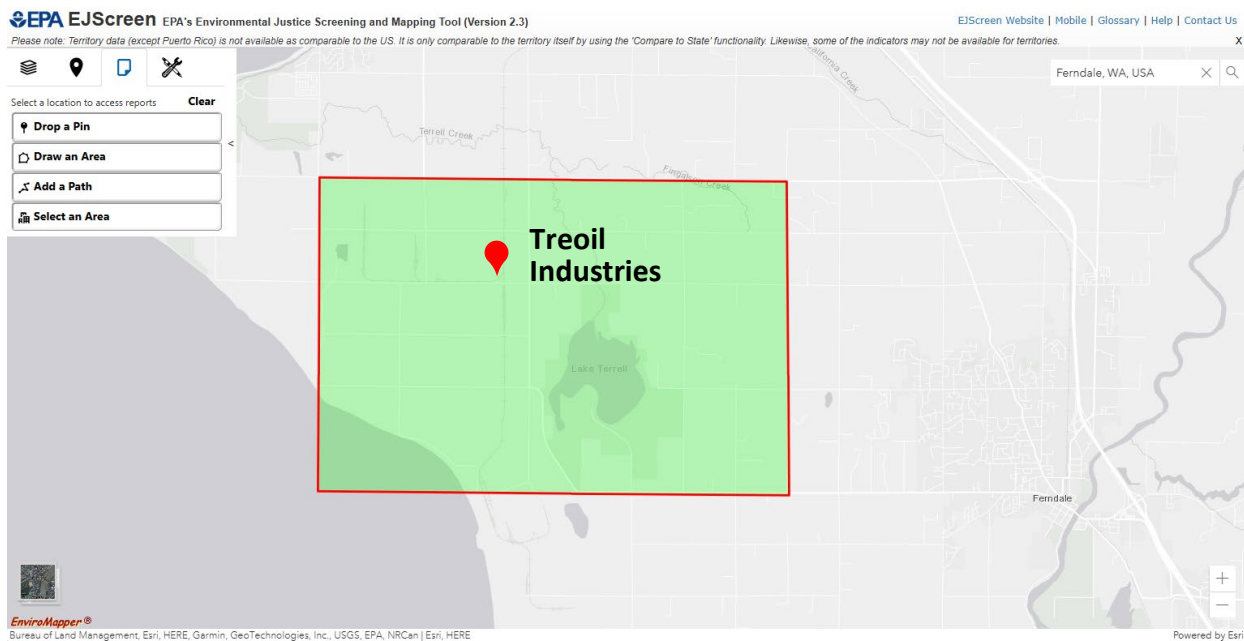


**Figure 2:** Washington Environmental Health Disparities Map for the Treoil Industries site census tract 010501 with an environmental health risk ranking of 3.

### EJScreen\*

The Environmental Justice Screening and Mapping Tool (EJScreen) has been developed by the Environmental Protection Agency (EPA). It is based on nationally consistent data and an approach that combines environmental and demographic indicators in maps and reports. Ecology uses this information to tailor its communications to the needs of communities through various means. These include developing language translations and identifying the need for interpreters. When appropriate Ecology translates materials like fact sheets in communities where 5% or more of the population speak English less than very well and considers accommodations when socio-economic indicators are above the EPA 80<sup>th</sup> percentile in-state threshold.

\*As of February 2025, the online EJScreen resource was removed by the EPA. Ecology obtained EJScreen data before this date.



**Figure 3:** EPA EJScreen generated map of the outreach area for the Treoil Industries site

The EJScreen analysis covered a 13.57-square-mile area around the Treoil Industries site to focus on rural residents and businesses (see Figure 3 and Appendix B). It identified a significant “population over 64 years of age,” prompting Ecology to tailor outreach efforts to their needs. It also found that 3% of households “speak English less than very well.” Based on EJScreen data, county data, and community research, fact sheets will include contact information in Spanish, Russian, Ukrainian, Arabic, and Punjabi to support language access and assist with translation and interpretation requests.

As part of our public involvement efforts, Ecology will reach out to cultural and community organizations (when available) and provide information in other languages as needed and in accordance with federal guidance.<sup>14</sup> To request information in another language, call Kristen Forkeutis at 425-240-4353 or email [Kristen.Forkeutis@ecy.wa.gov](mailto:Kristen.Forkeutis@ecy.wa.gov). If calling for interpretation services, please ask for an interpreter and stay on the line while we connect you.

We strive to make our public participation efforts as inclusive as possible and welcome your input about how to best reach the nearby community.

<sup>14</sup> <https://www.federalregister.gov/documents/2004/06/25/04-14464/guidance-to-environmental-protection-agency-financial-assistance-recipients-regarding-title-vi>



## Washington's Cleanup Laws

Ecology uses the [Model Toxics Control Act \(MTCA\)](#)<sup>15</sup> and accompanying regulations for cleanup activities. Passed in 1989, MTCA provides guidelines for contaminated site cleanup in Washington state. This law sets standards to ensure the cleanup protects human health and the environment. MTCA requires the creation of this plan.

### Model Toxics Control Act

MTCA began in 1988 as a citizen-led effort to clean up contaminated sites in Washington state. The law holds property owners or operators responsible for cleaning up contamination on, or coming from, their property.

Ecology carries out MTCA, making sure cleanups happen according to state rules and regulations. These rules are found in [Chapter 173-340 Washington Administrative Code \(WAC\)](#).<sup>16</sup> Ecology investigates reports of contamination, and the property is placed on the [Contaminated Sites List](#),<sup>17</sup> if the pollution is determined to pose a serious risk to human health or the environment. This starts the cleanup process at the site.

The cleanup process under MTCA includes several steps (Appendix A). Public involvement is a key part of MTCA's [cleanup process](#).<sup>18</sup> Nearby residents, businesses, community groups, and other interested parties can review and comment on documents related to steps that make crucial decisions or plans regarding the cleanup.

### State Environmental Policy Act

MTCA cleanups also require evaluation under the [State Environmental Policy Act \(SEPA\)](#).<sup>19</sup> Under SEPA, the potential for significant adverse environmental impacts from a project or action must be evaluated by state and local agencies when making decisions. This evaluation is subject to public review and comment in parallel with cleanup documents.

## Plan Amendments

Ecology developed this plan following MTCA regulations (WAC 173-340-600). We review it as the cleanup progresses and amend it as necessary. You may suggest amendments to Kristen Forkeutis at 425-240-4353 or [Kristen.Forkeutis@ecy.wa.gov](mailto:Kristen.Forkeutis@ecy.wa.gov).

This plan intends to provide the public with information on opportunities for public involvement and comment. The outreach activities discussed reflect Ecology's current plans to

---

<sup>15</sup> <https://www.ecology.wa.gov/mtca>

<sup>16</sup> <https://apps.ecology.wa.gov/publications/publications/9406.pdf>

<sup>17</sup> <https://apps.ecology.wa.gov/cleanupsearch/reports/cleanup/contaminated>

<sup>18</sup> <https://ecology.wa.gov/MTCA-process>

<sup>19</sup> <https://app.leg.wa.gov/WAC/default.aspx?cite=197-11>

keep the public informed. It also provides ways for those interested in the site to communicate their concerns and questions to us.

If you feel the planned outreach activities and mechanisms found in this plan are insufficient or would like to modify them in some way, please contact us. We will work to find solutions. We can implement new activities or outreach tools right away, with or without amending this plan.

## Appendices

### **Appendix A. Steps in the MTCA cleanup process**

The cleanup process is defined in the Model Toxics Control Act (MTCA), Washington's cleanup law. See the accessible PDF for details.

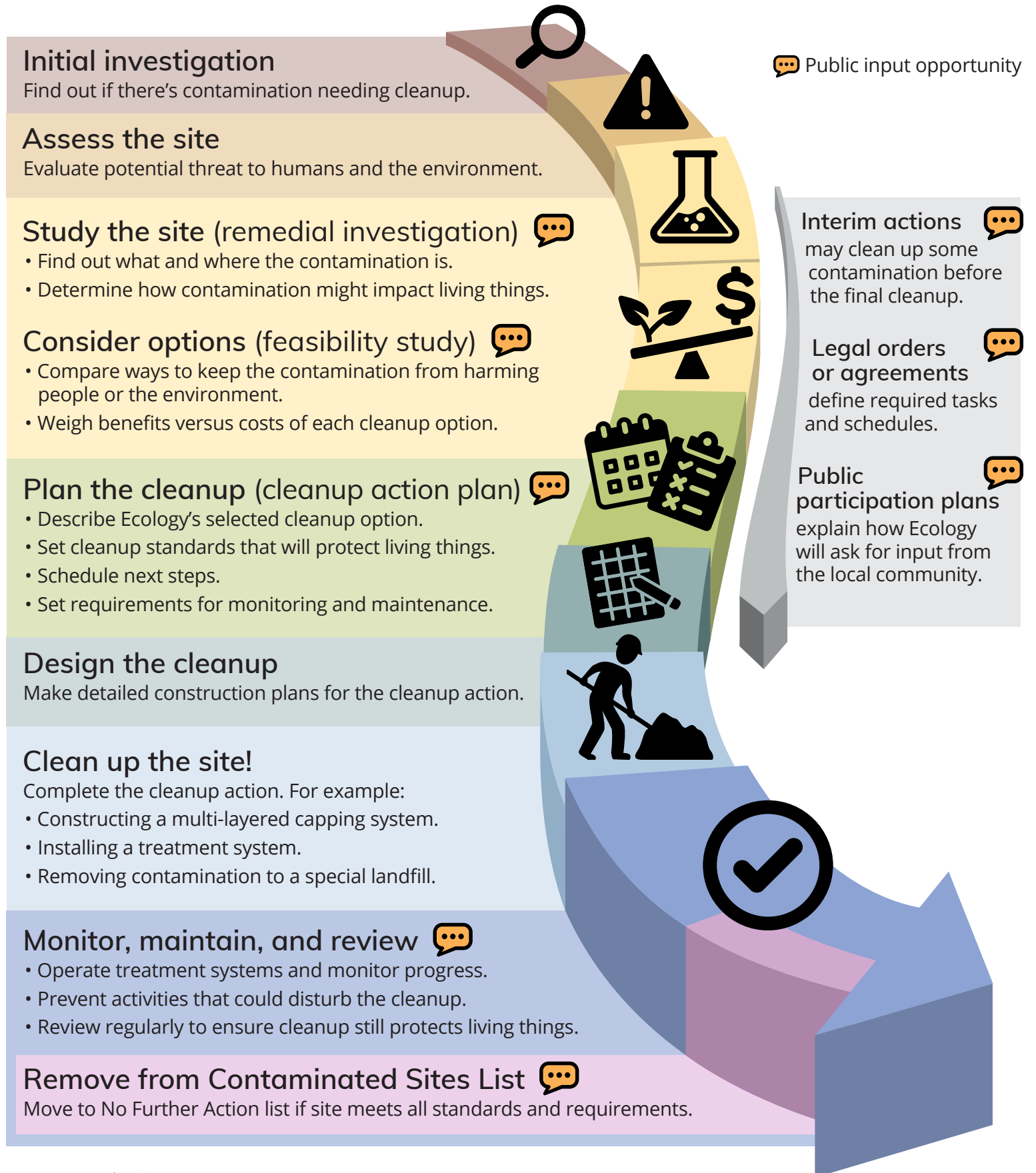
### **Appendix B. EPA EJScreen Community Report & ACS Summary Report**

EPA's EJScreen reports for a specified area around the Treoil Industries site.

# Washington's Cleanup Process



Public participation plans and comment periods are only required for cleanups under a legal agreement with Ecology. Otherwise, all cleanups follow the same steps. The steps are defined by Washington's cleanup law, the Model Toxics Control Act.

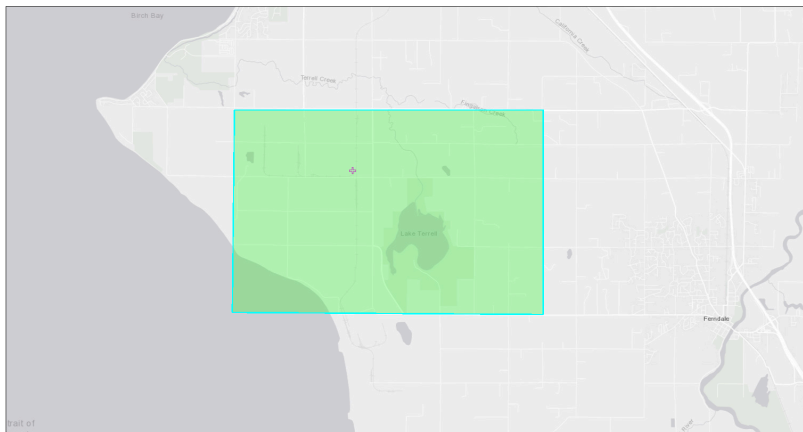


# EJScreen Community Report

This report provides environmental and socioeconomic information for user-defined areas, and combines that data into environmental justice and supplemental indexes.

## Treoil Industries

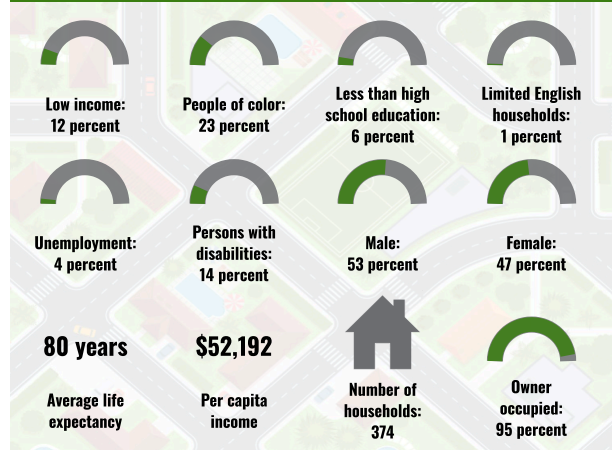
the User Specified Area  
Population: 1,152  
Area in square miles: 13.57



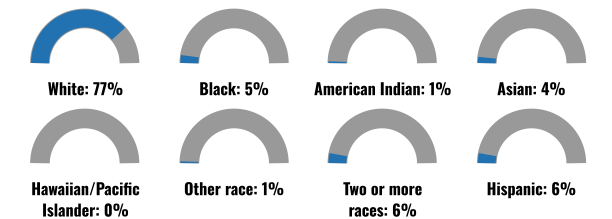
January 22, 2025  
Treoil Industries  
Search Result (point)

Bureau of Land Management, Esri, HERE, Garmin, GeoTechnologies, Inc., USGS, EPA, NRC, Esri, HERE

### COMMUNITY INFORMATION



### BREAKDOWN BY RACE



### BREAKDOWN BY AGE



### LIMITED ENGLISH SPEAKING BREAKDOWN



Notes: Numbers may not sum to totals due to rounding. Hispanic population can be of any race. Source: U.S. Census Bureau, American Community Survey (ACS) 2018-2022. Life expectancy data comes from the Centers for Disease Control.

### LANGUAGES SPOKEN AT HOME

| LANGUAGE                         | PERCENT |
|----------------------------------|---------|
| English                          | 80%     |
| Spanish                          | 2%      |
| French, Haitian, or Cajun        | 1%      |
| Russian, Polish, or Other Slavic | 5%      |
| Other Indo-European              | 4%      |
| Korean                           | 3%      |
| Other Asian and Pacific Island   | 1%      |
| Arabic                           | 5%      |
| Total Non-English                | 20%     |

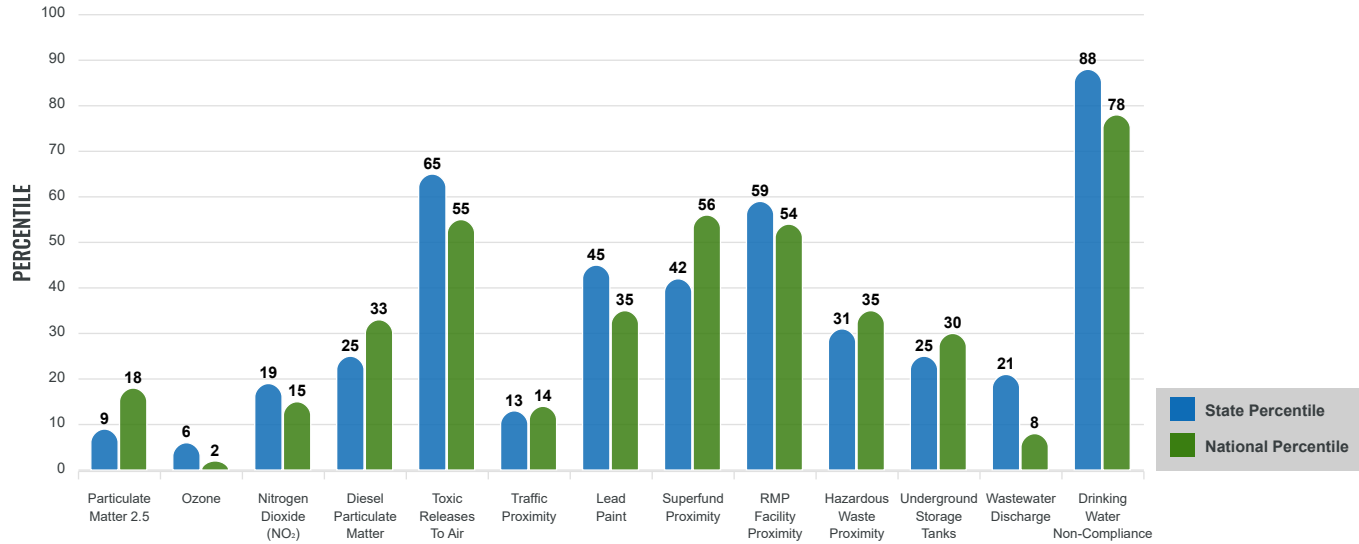
# Environmental Justice & Supplemental Indexes

The environmental justice and supplemental indexes are a combination of environmental and socioeconomic information. There are thirteen EJ indexes and supplemental indexes in EJScreen reflecting the 13 environmental indicators. The indexes for a selected area are compared to those for all other locations in the state or nation. For more information and calculation details on the EJ and supplemental indexes, please visit the [EJScreen website](#).

## EJ INDEXES

The EJ indexes help users screen for potential EJ concerns. To do this, the EJ index combines data on low income and people of color populations with a single environmental indicator.

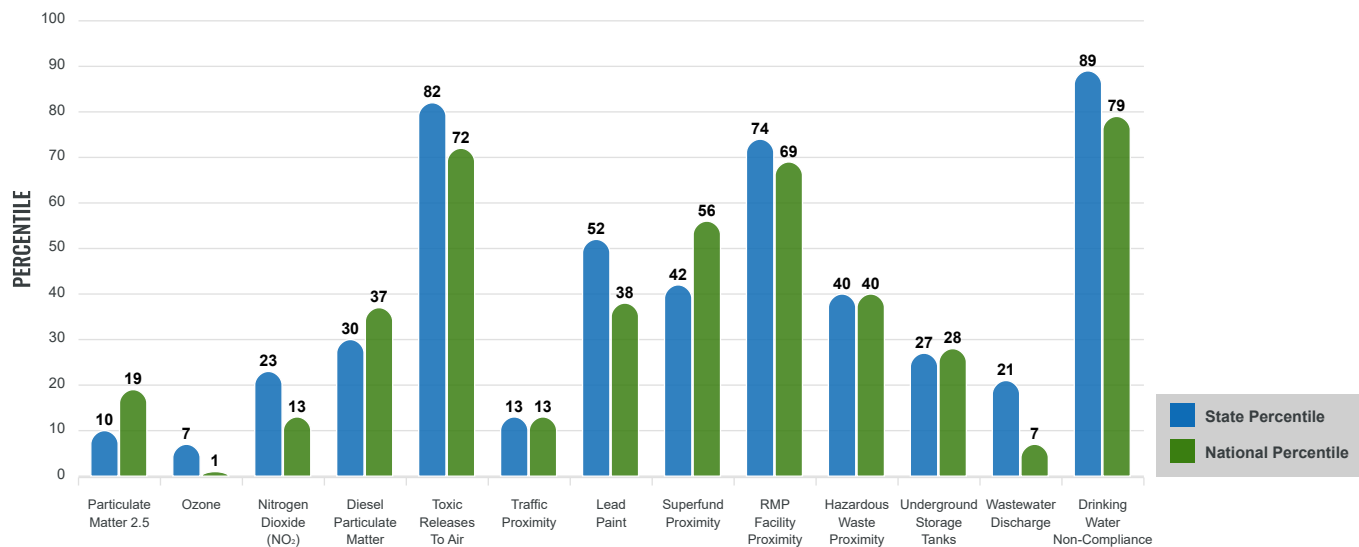
### EJ INDEXES FOR THE SELECTED LOCATION



## SUPPLEMENTAL INDEXES

The supplemental indexes offer a different perspective on community-level vulnerability. They combine data on percent low income, percent persons with disabilities, percent less than high school education, percent limited English speaking, and percent low life expectancy with a single environmental indicator.

### SUPPLEMENTAL INDEXES FOR THE SELECTED LOCATION



Report for the User Specified Area

Report produced January 22, 2025 using EJScreen Version 2.3

# EJScreen Environmental and Socioeconomic Indicators Data

| SELECTED VARIABLES  | VALUE  | STATE AVERAGE | PERCENTILE IN STATE | USA AVERAGE | PERCENTILE IN USA |
|---|--------|---------------|---------------------|-------------|-------------------|
| <b>ENVIRONMENTAL BURDEN INDICATORS</b>                            |        |               |                     |             |                   |
| Particulate Matter 2.5 ( $\mu\text{g}/\text{m}^3$ )               | 7.04   | 9.51          | 9                   | 8.45        | 19                |
| Ozone (ppb)   | 48.8   | 51.8          | 5                   | 61.8        | 1                 |
| Nitrogen Dioxide ( $\text{NO}_2$ ) (ppbv)                         | 4      | 6.3           | 19                  | 7.8         | 14                |
| Diesel Particulate Matter ( $\mu\text{g}/\text{m}^3$ )            | 0.126  | 0.256         | 26                  | 0.191       | 38                |
| Toxic Releases to Air (toxicity-weighted concentration)           | 6,500  | 1,800         | 95                  | 4,600       | 89                |
| Traffic Proximity (daily traffic count/distance to road)          | 84,000 | 1,200,000     | 13                  | 1,700,000   | 16                |
| Lead Paint (% Pre-1960 Housing)                                   | 0.14   | 0.23          | 51                  | 0.3         | 41                |
| Superfund Proximity (site count/km distance)                      | 0.013  | 0.53          | 42                  | 0.39        | 56                |
| RMP Facility Proximity (facility count/km distance)               | 1.1    | 0.51          | 87                  | 0.57        | 83                |
| Hazardous Waste Proximity (facility count/km distance)            | 0.8    | 2.9           | 35                  | 3.5         | 41                |
| Underground Storage Tanks (count/ $\text{km}^2$ )                 | 0.25   | 6.1           | 33                  | 3.6         | 38                |
| Wastewater Discharge (toxicity-weighted concentration/m distance) | 0.0059 | 300           | 29                  | 700000      | 10                |
| Drinking Water Non-Compliance (points)                            | 0.54   | 1             | 86                  | 2.2         | 76                |
| <b>SOCIOECONOMIC INDICATORS</b>                                   |        |               |                     |             |                   |
| Demographic Index USA   | 0.65   | N/A           | N/A                 | 1.34        | 23                |
| Supplemental Demographic Index USA                                | 1.28   | N/A           | N/A                 | 1.64        | 33                |
| Demographic Index State   | 0.9    | 1.47          | 26                  | N/A         | N/A               |
| Supplemental Demographic Index State                              | 1.18   | 1.37          | 43                  | N/A         | N/A               |
| People of Color   | 23%    | 33%           | 38                  | 40%         | 40                |
| Low Income  | 12%    | 23%           | 31                  | 30%         | 22                |
| Unemployment Rate   | 4%     | 5%            | 53                  | 6%          | 53                |
| Limited English Speaking Households                               | 2%     | 4%            | 56                  | 5%          | 61                |
| Less Than High School Education                                   | 6%     | 8%            | 51                  | 11%         | 41                |
| Under Age 5   | 5%     | 5%            | 47                  | 5%          | 49                |
| Over Age 64   | 26%    | 17%           | 82                  | 18%         | 80                |

\*Diesel particulate matter index is from the EPA's Air Toxics Data Update, which is the Agency's ongoing, comprehensive evaluation of air toxics in the United States. This effort aims to prioritize air toxics, emission sources, and locations of interest for further study. It is important to remember that the air toxics data presented here provide broad estimates of health risks over geographic areas of the country, not definitive risks to specific individuals or locations. More information on the Air Toxics Data Update can be found at: <https://www.epa.gov/haps/air-toxics-data-update>.

## Sites reporting to EPA within defined area:

|  |    |
|--|----|
| Superfund .....  | 0  |
| Hazardous Waste, Treatment, Storage, and Disposal Facilities ..... | 1  |
| Water Dischargers .....  | 18 |
| Air Pollution .....  | 3  |
| Brownfields .....  | 0  |
| Toxic Release Inventory .....                                      | 3  |

## Other community features within defined area:

|                         |   |
|-------------------------|---|
| Schools .....           | 0 |
| Hospitals .....         | 0 |
| Places of Worship ..... | 0 |

## Other environmental data:

|                          |     |
|--------------------------|-----|
| Air Non-attainment ..... | Yes |
| Impaired Waters .....    | Yes |

|  |     |
|--|-----|
| Selected location contains American Indian Reservation Lands* .....            | No  |
| Selected location contains a "Justice40 (CEJST)" disadvantaged community ..... | No  |
| Selected location contains an EPA IRA disadvantaged community .....            | Yes |

Report for the User Specified Area

Report produced January 22, 2025 using EJScreen Version 2.3

# EJScreen Environmental and Socioeconomic Indicators Data

## HEALTH INDICATORS

| INDICATOR                 | VALUE | STATE AVERAGE | STATE PERCENTILE | US AVERAGE | US PERCENTILE |
|---------------------------|-------|---------------|------------------|------------|---------------|
| Low Life Expectancy       | 18%   | 18%           | 54               | 20%        | 41            |
| Heart Disease             | 4.8   | 4.8           | 51               | 5.8        | 31            |
| Asthma                    | 10.8  | 10.9          | 43               | 10.3       | 67            |
| Cancer                    | 6.8   | 6.5           | 58               | 6.4        | 56            |
| Persons with Disabilities | 14.5% | 13.4%         | 61               | 13.7%      | 60            |

## CLIMATE INDICATORS

| INDICATOR     | VALUE | STATE AVERAGE | STATE PERCENTILE | US AVERAGE | US PERCENTILE |
|---------------|-------|---------------|------------------|------------|---------------|
| Flood Risk    | 2%    | 11%           | 33               | 12%        | 26            |
| Wildfire Risk | 0%    | 12%           | 0                | 14%        | 0             |

## CRITICAL SERVICE GAPS

| INDICATOR                    | VALUE | STATE AVERAGE | STATE PERCENTILE | US AVERAGE | US PERCENTILE |
|------------------------------|-------|---------------|------------------|------------|---------------|
| Broadband Internet           | 7%    | 8%            | 58               | 13%        | 40            |
| Lack of Health Insurance     | 3%    | 6%            | 20               | 9%         | 18            |
| Housing Burden               | No    | N/A           | N/A              | N/A        | N/A           |
| Transportation Access Burden | Yes   | N/A           | N/A              | N/A        | N/A           |
| Food Desert                  | No    | N/A           | N/A              | N/A        | N/A           |

Report for the User Specified Area

Report produced January 22, 2025 using EJScreen Version 2.3



Location: the User Specified Area

Description: Treoil Industries

| Summary of ACS Estimates               |  | 2018 - 2022                  |         |         |
|--|--|------------------------------|---------|---------|
| Population                             |  |                              |         | 1,152   |
| Population Density (per sq. mile)      |  |                              |         | 120     |
| People of Color Population             |  |                              |         | 264     |
| % People of Color Population           |  |                              |         | 23%     |
| Households                             |  |                              |         | 374     |
| Housing Units                          |  |                              |         | 450     |
| Housing Units Built Before 1950        |  |                              |         | 39      |
| Per Capita Income                      |  |                              |         | 52,192  |
| Land Area (sq. miles) (Source: SF1)    |  |                              |         | 9.62    |
| % Land Area                            |  |                              |         | 69%     |
| Water Area (sq. miles) (Source: SF1)   |  |                              |         | 4.24    |
| % Water Area                           |  |                              |         | 31%     |
|  |  | 2018 - 2022<br>ACS Estimates | Percent | MOE (±) |
| <b>Population by Race</b>              |  |                              |         |         |
| Total                                  |  | 1,152                        | 100%    | 664     |
| Population Reporting One Race          |  | 1,069                        | 93%     | 1,224   |
| White                                  |  | 896                          | 78%     | 633     |
| Black                                  |  | 55                           | 5%      | 153     |
| American Indian                        |  | 13                           | 1%      | 30      |
| Asian                                  |  | 50                           | 4%      | 294     |
| Pacific Islander                       |  | 0                            | 0%      | 13      |
| Some Other Race                        |  | 55                           | 5%      | 101     |
| Population Reporting Two or More Races |  | 84                           | 7%      | 129     |
| Total Hispanic Population              |  | 65                           | 6%      | 109     |
| Total Non-Hispanic Population          |  | 1,088                        |         |         |
| White Alone                            |  | 888                          | 77%     | 633     |
| Black Alone                            |  | 55                           | 5%      | 153     |
| American Indian Alone                  |  | 7                            | 1%      | 22      |
| Non-Hispanic Asian Alone               |  | 50                           | 4%      | 294     |
| Pacific Islander Alone                 |  | 0                            | 0%      | 13      |
| Other Race Alone                       |  | 17                           | 1%      | 67      |
| Two or More Races Alone                |  | 72                           | 6%      | 100     |
| <b>Population by Sex</b>               |  |                              |         |         |
| Male                                   |  | 607                          | 53%     | 457     |
| Females                                |  | 546                          | 47%     | 312     |
| <b>Population by Age</b>               |  |                              |         |         |
| Age 0-4                                |  | 53                           | 5%      | 139     |
| Age 0-17                               |  | 224                          | 19%     | 299     |
| Age 18+                                |  | 928                          | 81%     | 429     |
| Age 65+                                |  | 294                          | 26%     | 219     |

**Data Note:** Detail may not sum to totals due to rounding. Hispanic population can be any race. N/A means not available. **Source:** U.S. Census Bureau, American Community (ACS) 2018 - 2022.

Location: the User Specified Area  
Description: Treoil Industries

|  | 2018 - 2022<br>ACS Estimates | Percent | MOE (±) |
|--|------------------------------|---------|---------|
| <b>Population 25+ by Educational Attainment</b>      |                              |         |         |
| Total  | 862                          | 100%    | 492     |
| Less than 9th Grade                                  | 29                           | 3%      | 74      |
| 9th - 12th Grade, No Diploma                         | 21                           | 2%      | 58      |
| High School Graduate                                 | 215                          | 25%     | 183     |
| Some College, No Degree                              | 199                          | 23%     | 228     |
| Associate Degree                                     | 101                          | 12%     | 168     |
| Bachelor's Degree or more                            | 298                          | 35%     | 283     |
| <b>Population Age 5+ by Ability to Speak English</b> |                              |         |         |
| Total  | 1,100                        | 100%    | 628     |
| Speak only English                                   | 894                          | 81%     | 534     |
| Non-English at Home <sup>1+2+3+4</sup>               | 205                          | 19%     | 259     |
| <sup>1</sup> Speak English "very well"               | 168                          | 15%     | 243     |
| <sup>2</sup> Speak English "well"                    | 29                           | 3%      | 95      |
| <sup>3</sup> Speak English "not well"                | 7                            | 1%      | 47      |
| <sup>4</sup> Speak English "not at all"              | 0                            | 0%      | 45      |
| <sup>3+4</sup> Speak English "less than well"        | 7                            | 1%      | 65      |
| <sup>2+3+4</sup> Speak English "less than very well" | 37                           | 3%      | 114     |
| <b>Limited English Speaking Households*</b>          |                              |         |         |
| Total  | 5                            | 100%    | 34      |
| Speak Spanish  | 0                            | 0%      | 13      |
| Speak Other Indo-European Languages                  | 5                            | 100%    | 25      |
| Speak Asian-Pacific Island Languages                 | 0                            | 0%      | 13      |
| Speak Other Languages                                | 0                            | 0%      | 13      |
| <b>Households by Household Income</b>                |                              |         |         |
| Household Income Base                                | 374                          | 100%    | 246     |
| < \$15,000   | 18                           | 5%      | 91      |
| \$15,000 - \$25,000                                  | 12                           | 3%      | 79      |
| \$25,000 - \$50,000                                  | 57                           | 15%     | 133     |
| \$50,000 - \$75,000                                  | 49                           | 13%     | 139     |
| \$75,000   | 237                          | 63%     | 248     |
| <b>Occupied Housing Units by Tenure</b>              |                              |         |         |
| Total  | 374                          | 100%    | 246     |
| Owner Occupied                                       | 354                          | 95%     | 257     |
| Renter Occupied                                      | 20                           | 5%      | 135     |
| <b>Employed Population Age 16+ Years</b>             |                              |         |         |
| Total  | 958                          | 100%    | 502     |
| In Labor Force                                       | 498                          | 52%     | 443     |
| Civilian Unemployed in Labor Force                   | 21                           | 4%      | 113     |
| Not In Labor Force                                   | 460                          | 48%     | 398     |

**Data Note:** Detail may not sum to totals due to rounding. Hispanic population can be any race. N/A means not available. **Source:** U.S. Census Bureau, American Community (ACS) 2018 - 2022. \*Households in which no one 14 and over speaks English "very well" or speaks English only.

Location: the User Specified Area

Description: Treoil Industries

|  | 2018 - 2022<br>ACS Estimates | Percent | MOE (±) |
|--|------------------------------|---------|---------|
| <b>Population by Languages Spoken at Home*</b> |                              |         |         |
| Total (persons age 5 and above)                | 1,363                        | 100%    | 481     |
| English  | 1,097                        | 80%     | 464     |
| Spanish  | 21                           | 2%      | 55      |
| French, Haitian, or Cajun                      | 16                           | 1%      | 47      |
| German, or other Western Germanic              | 6                            | 0%      | 18      |
| Russian, Polish, or Other Slavic               | 62                           | 5%      | 168     |
| Other Indo-European                            | 50                           | 4%      | 107     |
| Korean   | 36                           | 3%      | 106     |
| Chinese (including Mandarin, Cantonese)        | 0                            | 0%      | 13      |
| Vietnamese                                     | 0                            | 0%      | 13      |
| Tagalog (including Filipino)                   | 0                            | 0%      | 13      |
| Other Asian and Pacific Island                 | 13                           | 1%      | 35      |
| Arabic   | 63                           | 5%      | 157     |
| Other and Unspecified                          | 0                            | 0%      | 13      |
| Total Non-English                              | 266                          | 20%     | 668     |

**Data Note:** Detail may not sum to totals due to rounding. Hispanic population can be any race.  
N/A means not available. **Source:** U.S. Census Bureau, American Community (ACS) 2018 - 2022.  
\*Population by Language Spoken at Home is available at the census tract summary level and up.