

DEPARTMENT OF ECOLOGY

ORIGINAL TO:

W.R. ....

COPIES TO:

LAB. FILES .....

OLYMPIA LABORATORY

DATA SUMMARY

Source CASSOLARY Creek

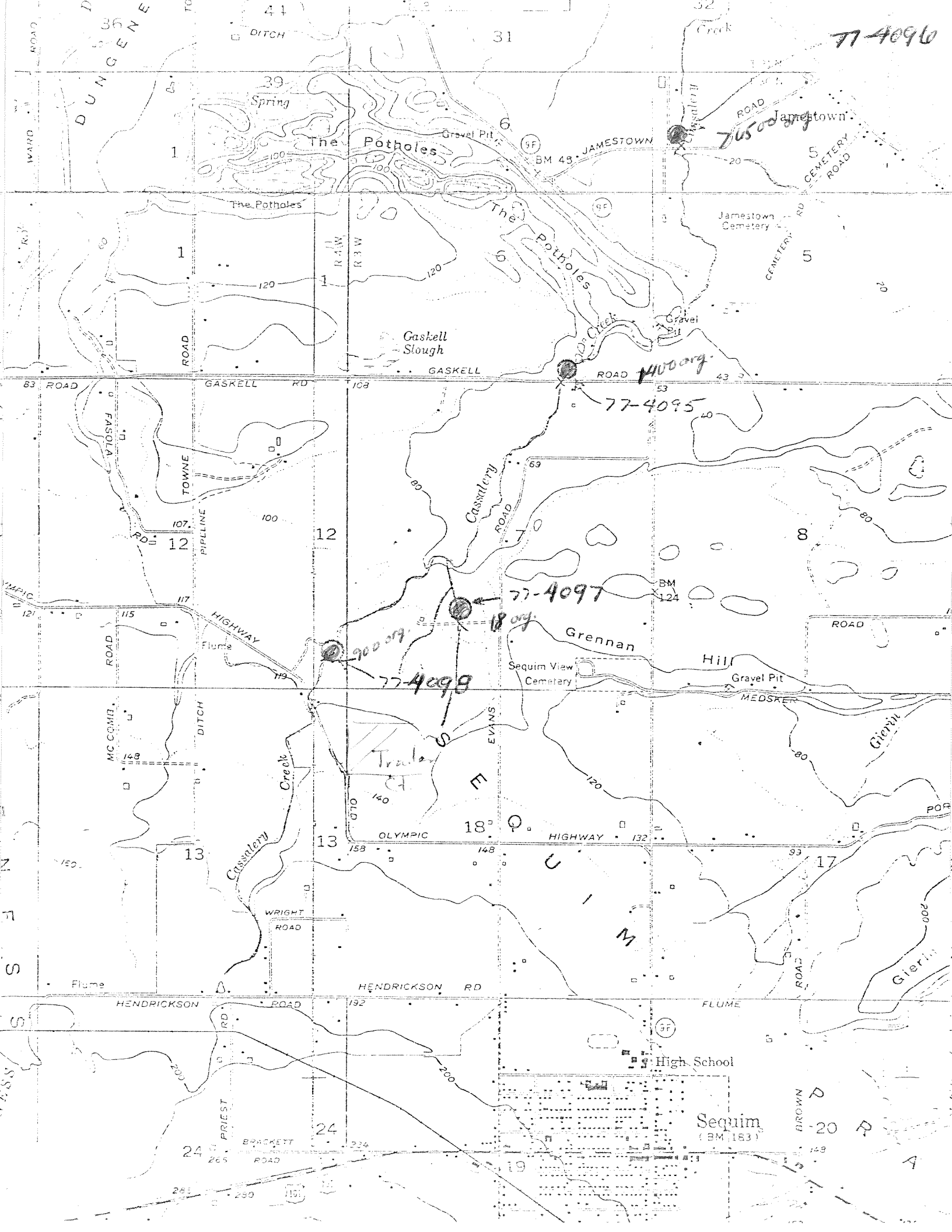
Collected By W. Bergstrom

Date Collected 6-29-77

Log Number: 77-4095 96 97 98

Station:	UNWA Cassell Rd	UNWA Jameson Rd	UNWA Dead End Rd.	Ⓢ Luzumb					
pH	7.5	7.9	7.5	7.2					
Turbidity (NTU)									
Sp. Conductivity (umhos/cm)									
COD	32	16	16	16					
BOD (5 day)	5	2	< 2	3					
Total Coliform (Col./100ml)	EST 2500	> 7,700	EST 860	EST 1,100					
Fecal Coliform (Col./100ml)	EST 1400	> 6,500	EST 18	EST 900					
NO2-N (Filtered)									
NO2-N (Filtered)									
NH3-N (Unfiltered)									
T. Kjeldahl-N (Unfiltered)									
O-PO4-P (Filtered)									
Total Phos.-P (Unfiltered)									
Total Solids									
Total Non. Vol. Solids									
Total Suspended Solids									
Total Sus. Non Vol. Solids									

Note: All results are in PPM (mg/L) unless otherwise specified. ND is "None Detected"  
 "<" is "Less Than" and ">" is "Greater Than"



77-4096

76500.org

1400.org

77-4095

77-4097

77-4098

900.org

18.org

Trailer

Sequim  
(BM 183)

DUNGENE

The Potholes

The Potholes

Gaskell Slough

Grennan Hill

Giervil

Giervil

High School

WARD ROAD

ROAD

ROAD

GASKELL RD

RD

ROAD

TOWNE

ROAD

ROAD

ROAD

ROAD

ROAD

ROAD

ROAD

ROAD

ROAD

ROAD

ROAD

ROAD

BRACKETT ROAD

PRIEST RD

ROAD

HENDRICKSON RD

FLUME

BROWN

ROAD

ROAD

ROAD

ROAD

ROAD

ROAD

ROAD

ROAD

ROAD

ROAD

ROAD

ROAD

ROAD

ROAD

ROAD

ROAD

ROAD

ROAD

ROAD

ROAD

ROAD

ROAD

ROAD

ROAD

ROAD

ROAD

ROAD

ROAD

ROAD

ROAD

ROAD

ROAD

DITCH

Spring

Gravel Pit

BM 43 JAMESTOWN

Creek

Cassalery

ROAD

ROAD

ROAD

ROAD

ROAD

ROAD

ROAD

ROAD

ROAD

ROAD

ROAD

ROAD

ROAD

ROAD

ROAD

ROAD

ROAD

ROAD

ROAD

ROAD

ROAD

ROAD

ROAD

ROAD

ROAD

ROAD

ROAD

ROAD

ROAD

ROAD

ROAD

41

31

39

6

32

1

1

1

12

12

13

13

13

24

24

24

41

31

39

6

32

1

1

1

12

12

13

13

13

24

24

24

41

31

39

6

32

1

1

1

12

12

13

13

13

24

24

24

41

31

39

6

32

1

1

1

12

12

13

13

13

24

24

24

41

31

39

6

32

1

1

1

12

12

13

13

13

24

24

24

41

31

39

6

32

1

1

1

12

12

13

13

13

24

24

24

41

31

39

6

32

1

1

1

12

12

13

13

13

24

24

24

41

31

39

6

32

1

1

1

12

12

13

13

13

24

24

24

41

31

39

6

32

1

1

1

12

12

13

13

13

24

24

24

41

31

39

6

32

1

1

1

12

12

13

13

13

24

24

24

41

31

39

6

32

1

1

1

12

12

13

13

13

24

24

24

41

31

39

6

32

1

1

1

12

12

13

13

13

24

24

24

41

31

39

6

32

1

1

1

12

12

13

13

13

24

24

24

41

31

39

6

32

1

1

1

12

12

13

13

13

24

24

24

41

31

39

6

32

1

1

1

12

12