

WASHINGTON STATE  
DEPARTMENT OF  
E C O L O G Y

# Guidelines For Reporting Imported Solid Waste

---

Washington State Department of Ecology  
Solid Waste Services Program  
Publication #94-140  
September 1994



# Guidelines For Reporting Imported Solid Waste

---

Washington State Department of Ecology  
Solid Waste Services Program

The Department of Ecology is an Equal Opportunity and Affirmative Action employer and shall not discriminate on the basis of race, creed, color, national origin, sex, marital status, sexual orientation, age religion or disability as defined by applicable state and/or federal regulations or statutes.

If you have special accommodation needs, please call  
(206) 407-6000 (Voice) or (206) 407-6006 (TDD)

For a copy of this document, please contact:

Washington State Department of Ecology  
Publication Distribution Center  
300 Desmond Drive  
P.O. Box 47600  
Olympia, WA 98504-7600  
(206) 407-7424

# GUIDELINES FOR REPORTING IMPORTED SOLID WASTE

## TABLE OF CONTENTS

PURPOSE OF GUIDELINES .....	1
KEY PROVISIONS OF RCW 70.95.218 .....	1
APPLICABILITY .....	2
IMPLEMENTATION DATE .....	2
DEFINITION OF TERMS .....	3
FACILITY OPERATOR RESPONSIBILITIES .....	4
SHIPMENTS EXCEEDING 10,000 TONS PER REPORTING PERIOD .....	4
Shipment Notification Reporting Requirement .....	4
Substantial Equivalency Determination Requirement .....	5
Timelines for Substantial Equivalency Review by Ecology .....	6
SHIPMENTS LESS THAN 10,000 TONS PER REPORTING PERIOD .....	7
Reporting Requirements .....	7
QUARTERLY REPORTING REQUIREMENTS FOR ALL SHIPMENTS .....	7
SHORT-TERM/EMERGENCY SHIPMENTS .....	8
FACILITY OPERATION .....	9
Unacceptable Shipments .....	9
Facility Regulations .....	9
ENFORCEMENT .....	9
FLOW CHART .....	10
LOCAL GOVERNMENT DELEGATION .....	12
Process for Delegation of Authority .....	12
DUTIES FOR ECOLOGY: OLYMPIA HEADQUARTERS OFFICE .....	12
DUTIES FOR ECOLOGY: REGIONAL OFFICES .....	13
APPENDIX I: REPORT FORMS (Forms A, B, and C)	
APPENDIX II: ECOLOGY CONTACTS	



## PURPOSE OF GUIDELINES

---

Comprehensive solid waste management has been a goal in Washington state for many years, beginning with the 1969 passage of RCW 70.95, *Solid Waste Management -- Reduction and Recycling*. Amendments were made to this law in 1984 and 1989, which included solid waste management methods for waste reduction and recycling, and the setting of solid waste management priorities. These approaches were taken to ensure a vital, healthy environment. A key element of Washington's solid waste management strategy is safe, affordable disposal of solid waste.

Due to population growth, space in solid waste landfills in many parts of the United States is being rapidly filled, causing solid waste managers to ship solid wastes across county lines, into other states, or even to other countries. Some of that solid waste is being imported into Washington, and in order to monitor it, the 1993 Legislature passed Substitute House Bill 1047, now codified as RCW 70.95.217,.218. These guidelines have been developed to implement the requirements found in RCW 70.95.218.

## KEY PROVISIONS OF RCW 70.95.218

---

- Requires solid waste disposal site operators to notify the Department of Ecology of the types and quantities of solid waste being received for disposal from outside the state at least 60 days prior to receipt of shipment. [RCW 70.95.218(1)]
- Provides for less than 60-day notification for short-term or emergency shipments of out-of-state solid waste to a solid waste disposal facility. [RCW 70.95.218(1)]
- Requires the Department of Ecology to determine if states, provinces or countries shipping solid waste to Washington have solid waste reduction, recycling, and management standards "substantially equivalent" to those applicable to solid waste generated in Washington state. [RCW 70.95.218(2)]
- Provides for Ecology to prohibit in-state disposal of solid wastes generated from outside the state if the generator does not have solid waste handling standards, and waste reduction and recycling requirements that are "substantially equivalent" to those applicable to solid waste generated in Washington state. [RCW 70.95.218(3)]
- Authorizes Ecology to delegate to local health jurisdictions the "substantially equivalent" review process. [RCW 70.95.218(2)]

- Authorizes Ecology to assess a fee<sup>1</sup> on the out-of-state waste sufficient to recover the actual costs incurred in ensuring that the out-of-state waste meets equivalent state standards. [RCW 70.95.218(2)]
- Authorizes Ecology to adopt implementation rules,<sup>2</sup> if necessary. [RCW 70.95.218(4)]

## APPLICABILITY

---

The reporting requirements in these guidelines are applicable to all solid waste being imported for disposal or incineration from outside Washington state to landfills or incinerator/waste-to-energy recovery facilities that receive municipal solid waste in addition to other solid wastes. (Please Note: Solid waste self-hauled from a single-family residence is exempt from the provisions of these guidelines.)

Disposal will be in solid waste disposal facilities which currently comply with the Municipal Solid Waste Landfill requirements of chapter 173-351 WAC, *Criteria for Municipal Solid Waste Landfills*; or incinerator/waste-to-energy recovery facilities requirements of chapter 173-304 WAC, *Minimum Functional Standards for Solid Waste Handling*, or chapter 173-306 WAC, *Special Incinerator Ash Management Standards*. An out-of-state generator that disposes of 10,000 tons or more of solid waste in a reporting period in Washington state is also subject to the equivalency review provisions of these guidelines.

These guidelines do not apply to out-of-state jurisdictions who have jointly prepared a comprehensive solid waste plan with a jurisdiction within Washington. However, the comprehensive solid waste plan must have been approved by Ecology before shipments take place for this exemption to apply.

## IMPLEMENTATION DATE

---

**The requirements in these guidelines will take effect on October 1, 1994.**

The Department of Ecology recognizes that there will be a period of transition as these requirements are being implemented:

---

<sup>1</sup> At this time (9/94), a fee is not being proposed.

<sup>2</sup> No rule is proposed at this time.



- The data gathering for the quarterly reporting requirement (**Form C - Quarterly Summary Of Solid Waste Shipments Received From Out-Of-State**) will begin on October 1 for Quarter 4. Form C for Quarter 4 must be submitted to Ecology by January 31, 1995. (The time span for each quarter and the due date for the quarterly report are listed in the section entitled, "Quarterly Reporting Requirements For All Shipments.")
- The requirement for the 60-day notification (**Form A - Notification To Receive Out-Of-State Solid Waste That Exceeds 10,000 Tons Per Reporting Period**) and Substantial Equivalency Determination (**Form B - State, Province, Or Country Substantial Equivalency Determination**) that will also be effective on October 1 will apply to new shipments only. (For those shipments already under contract on October 1, there will be voluntary submittal of Forms A and B.) If you have questions, please call Ellen Caywood at Ecology headquarters, (206) 407-6132.

## DEFINITION OF TERMS

---

All definitions from chapter 70.93 RCW, *Waste Reduction, Recycling and Model Litter Control Act*; chapter 70.95 RCW, *Solid Waste Management -- Reduction and Recycling*; chapter 70.95C RCW, *Waste Reduction*; chapter 70.95I RCW, *Used Oil Recycling*; chapter 70.95J RCW, *Municipal Sewage Sludge -- Biosolids*; chapter 70.102 RCW, *Hazardous Substance Information Act*; chapter 70.105 RCW *Hazardous Waste Management*; chapter 173-303 WAC, *Dangerous Waste Regulations*; chapter 173-304 WAC, *Minimum Functional Standards for Solid Waste Handling*; chapter 173-306 WAC, *Special Incinerator Ash Management Standards*; and chapter 173-351 WAC, *Criteria for Municipal Solid Waste Landfills* shall apply in these guidelines. In addition, the following words and phrases, as used in these guidelines, shall have the following meanings:

**"Department"** means the Department of Ecology.

**"Equivalency review"** means the process used by the department to ensure that the state, province, or country from which the solid waste is imported meets the comprehensive solid waste management and handling standards substantially equivalent to those required in Washington.

**"Generator"** means the one who generates solid waste.

**"Reporting period"** means the 12-month period following the start of a contract with the reporting entity.

**"Short-term/emergency shipments"** means shipments of solid waste that will arrive at the disposal facility with less than 60-days notice, may or may not exceed 10,000 tons in a

reporting period, may arrive on a one-time or irregular basis, or may be only the first shipment of multiple shipments of solid waste from the same occurrence or situation. Examples of causes are an unexpected landfill closure or incinerator shutdown, a natural disaster, or clean-up projects.

"**Substantially equivalent**" means a determination that a comprehensive solid waste management program of a state, province, or country provides comparable services to those provided in Washington state.

## **FACILITY OPERATOR RESPONSIBILITIES**

---

**All solid waste from out-of-state, except for self-hauled single-family solid waste, is subject to the reporting requirements of these guidelines, as described below. The receiving disposal facility will be responsible for submitting to Ecology headquarters all applicable forms and for meeting the timelines as identified in these guidelines. (The Ecology address and contact person are listed on the reporting forms in Appendix I.) Please Note:** Disposal facility computer-generated forms will be accepted in lieu of the printed forms, provided that all of the requested reporting information is included.

### **SHIPMENTS EXCEEDING 10,000 TONS PER REPORTING PERIOD**

#### **Shipment Notification Reporting Requirement**

A disposal facility intending to receive from an out-of-state generator solid waste that **potentially exceeds 10,000 tons<sup>3</sup>** each reporting period shall submit to Ecology headquarters a completed **Form A - Notification To Receive Out-Of-State Solid Waste That Exceeds 10,000 Tons Per Reporting Period** estimating the expected quantity of solid waste to be received during the reporting period from the generator. (The reporting period is the 12-month period following the start of a contract with the reporting entity.) This notification must be received by Ecology headquarters **at least sixty (60) days prior to receipt of the first shipment, except for short-term/emergency shipments**, as discussed in the section entitled, "Short-Term/Emergency Shipments."

If the solid waste identified in **Form A - Notification To Receive Out-Of-State Solid Waste That Exceeds 10,000 Tons Per Reporting Period** is not transported to the state within six months from the date of the first expected shipment, another **Form A** will need to be re-submitted, with any modifications, to Ecology headquarters.

---

<sup>3</sup> The notification and reporting requirements for shipments that are expected to be exactly 10,000 tons per reporting period are the same as the notification and reporting requirements for shipments exceeding 10,000 tons per reporting period.

At the start of each new reporting period, a revised **Form A - Notification To Receive Out-Of-State Solid Waste That Exceeds 10,000 Tons Per Reporting Period** for that reporting entity will need to be submitted to Ecology headquarters.

Quarterly reporting (**Form C - Quarterly Summary Of Solid Waste Shipments Received From Out-Of-State**), as discussed in the section entitled, "Quarterly Reporting Requirements For All Shipments," **will apply to all** shipments of solid waste from out-of-state, regardless of tonnage.

### **Substantial Equivalency Determination Requirement**

For generators whose shipments will exceed 10,000 tons per reporting period, **Form B - State, Province, Or Country Substantial Equivalency Determination** shall also be completed and submitted to Ecology headquarters in Olympia. This notification must be received at least sixty (60) days prior to receipt of the first shipment, except for short-term/emergency shipments, as discussed in the section entitled, "Short-Term/Emergency Shipments." This notification will be required to be completed only once every five (5) years for each state, province, or country in which the generator is located. Once Substantial Equivalency has been satisfactorily determined, all solid waste from that state, province, or country is included for that five-year period, and no further Substantial Equivalency reporting will be required during that time.

Requests for determinations of Substantial Equivalency can be submitted to Ecology headquarters in anticipation of the signing of future contracts. If a determination of Substantial Equivalency has already been made for a state, province, or country, that determination will be acceptable for other facilities. **For a current list of states/provinces/countries that have met the Substantial Equivalency requirements and their Substantial Equivalency expiration dates, contact Ecology headquarters.**

At the end of five (5) years, **Form B - State, Province, or Country Substantial Equivalency Determination** will need to be updated and submitted to Ecology headquarters for a re-evaluation of equivalency.

The documentation for the Substantial Equivalency requirement will enable the department to determine if the solid waste management program of the state, province, or country from which solid waste may be received is substantially equivalent to the comprehensive solid waste management program within Washington state.

In Washington state, the following priorities for the collection, handling, and management of solid waste are listed in chapter 70.95 RCW, *Solid Waste Management -- Reduction and Recycling*: (1) Waste reduction; (2) Recycling, with source separation of recyclable materials as the preferred method; (3) Energy recovery, incineration, or landfilling of separated waste; (4) Energy recovery, incineration, or landfilling of mixed wastes.

In addition, it is Washington state's goal to meet a 50% recycling rate by 1995. Recycling is to be made available to all citizens through curbside recycling, drop boxes, and household hazardous waste and used oil collection facilities. Washington also has comprehensive education programs for waste reduction, source separation, and recycling.

While Ecology does not expect that another state, province, or country will have all of these programs, there is an expectation that there is some type of waste reduction and recycling program underway.

The following wastes are restricted or prohibited from disposal in solid waste facilities:

- Vehicle batteries, as provided in RCW 70.95.160
- Liquid wastes, sewage sludge, septic tank sludge or biosolids, as provided in WAC 173-351.200(9) and WAC 173-351.220(10)
- Used oil, as provided in RCW 70.95I.060
- Hazardous, dangerous, or mixed waste including nuclear waste, as defined by Subtitle C of Public Law 94-580, *Resource Conservation and Recovery Act (RCRA)*, chapter 70.105 RCW, *Hazardous Waste Management* and chapter 173-303 WAC, *Dangerous Waste Regulations*
- Waste types that are prohibited by specific local ordinances

For additional information on these restrictions or prohibitions, consult the referenced regulations or contact the Department of Ecology.

### Timelines for Substantial Equivalency Review by Ecology

Ecology will notify the disposal facility **within ten (10) working days** after the receipt of the Substantial Equivalency review form as to the completeness of the form. If the form is not complete, the department will specify the additional information that is needed.

For equivalency review, the department will notify the disposal facility **within thirty (30) days** of receipt of a **completed** equivalency review form whether the solid waste management program of the state, province, or country is/is not substantially equivalent to the comprehensive solid waste management program in Washington state.

**Please Note:** For those shipments that fall under the substantial equivalency review, solid waste cannot be accepted at the disposal facility until it is determined that the solid waste program of the state, province, or country is substantially equivalent.

## SHIPMENTS LESS THAN 10,000 TONS PER REPORTING PERIOD

### Reporting Requirements

For shipments of solid waste from out-of-state that will be less than 10,000 tons per reporting period, shipment notification (Form A) and the substantial equivalency determination (Form B) will not apply.

Quarterly reporting (Form C), as discussed in the next section, will apply to all shipments of solid waste from out-of-state, regardless of tonnage.

## QUARTERLY REPORTING REQUIREMENTS FOR ALL SHIPMENTS

Disposal facilities will be required to report all quantities of solid waste received from out-of-state on Form C - *Quarterly Summary Of Solid Waste Shipments Received From Out-Of-State*.

The disposal facility shall submit Form C - *Quarterly Summary Of Solid Waste Shipments Received From Out-Of-State* to Ecology headquarters. (Quarterly reports need not arrange the data by generator, but can instead organize it by county of origin and indicate the total number of generators from the county.) The submittal of this form is required regardless of the tonnage received.

To protect disposal facilities' proprietary information, these guidelines do not require disposal facility operators to report customer names. Ecology may request generators' identities in specific cases, but shall protect such information from disclosure to the extent permitted by law.

The disposal facility shall submit Form C - *Quarterly Summary Of Solid Waste Shipments Received From Out-Of-State* within one (1) month following the end of each calendar quarter. The due dates are as follows:

Quarter 1:	April 30	(for January through March)
Quarter 2:	July 31	(for April through June)
Quarter 3:	October 31	(for July through September)
Quarter 4:	January 31	(for October through December)

Please note that disposal facility computer-generated forms will be accepted in lieu of the printed forms, provided that all of the requested reporting information is included.

## SHORT-TERM/EMERGENCY SHIPMENTS

**Short-term/emergency shipments** are shipments of solid waste that will arrive at the disposal facility with **less than 60-days notice**. They may or may not exceed 10,000 tons in a reporting period.

A shipment that falls into the short-term/emergency shipments category may arrive on a one-time or irregular basis, or may be only the first shipment of multiple shipments of solid waste from the same occurrence or situation. Short-term/emergency shipments can arrive at the disposal facility as a result of an unexpected landfill closure or incinerator shutdown, a natural disaster, or from clean-up projects.

For short-term/emergency shipments where the shipments **potentially exceed 10,000 tons per reporting period**, the facility **must contact, by phone, the appropriate Ecology regional office** (see Appendix II) and provide information on source, type, estimated amount, and projected arrival date of the initial shipment of the solid waste and other information that the department deems appropriate.

The disposal facility must then submit the following required forms to Ecology headquarters **within ten (10) working days**:

**Form A - Notification To Receive Out-Of-State Solid Waste That Exceeds 10,000 Tons Per Reporting Period**

**Form B - State, Province, Or Country Substantial Equivalency Determination** (if one has not already been submitted and is on file with Ecology)

**Please note** that short-term/emergency shipments which exceed 10,000 tons per reporting period are subject to the Substantial Equivalency Determination requirement, but the determination of substantial equivalency need not be done in advance of the short-term emergency shipment.

Disposal facilities will be required to **report all quantities of solid waste received from out-of-state on Form C - Quarterly Summary Of Solid Waste Shipments Received From Out-Of-State**. **Form C** is to be sent to Ecology headquarters on the **quarterly reporting schedule** (April 30, July 31, October 31, January 31), as listed in the section entitled "Quarterly Reporting Requirements For All Shipments."

For those short-term/emergency shipments expected to be **less than 10,000 tons per reporting period**, the disposal facility does **not** have to contact the Ecology regional office for shipment notification. The tonnage received from those shipments will be included in the totals on **Form C - Quarterly Summary Of Solid Waste Shipments Received From Out-Of-State**.

## FACILITY OPERATION

### Unacceptable Shipments

The receiving disposal facility is responsible for determining that shipments originating from out-of-state do not contain wastes which are restricted or prohibited from disposal, including, but not limited to:

- Vehicle batteries, as provided in RCW 70.95.160
- Liquid wastes, sewage sludge, septic tank sludge or biosolids, as provided in WAC 173-351.200(9) and WAC 173-351.220(10)
- Used oil, as provided in RCW 70.95I.060
- Hazardous, dangerous, or mixed waste including nuclear waste, as defined by Subtitle C of Public Law 94-580, *Resource Conservation and Recovery Act (RCRA)*, chapter 70.105 RCW, *Hazardous Waste Management* and chapter 173-303 WAC, *Dangerous Waste Regulations*
- Waste types that are prohibited by specific local ordinances.

For additional information on these restrictions or prohibitions, consult the referenced regulations or contact the Department of Ecology.

**Unacceptable waste must be rejected by the facility, and it is suggested that rejection procedures be negotiated before any waste is received.**

### Facility Regulations

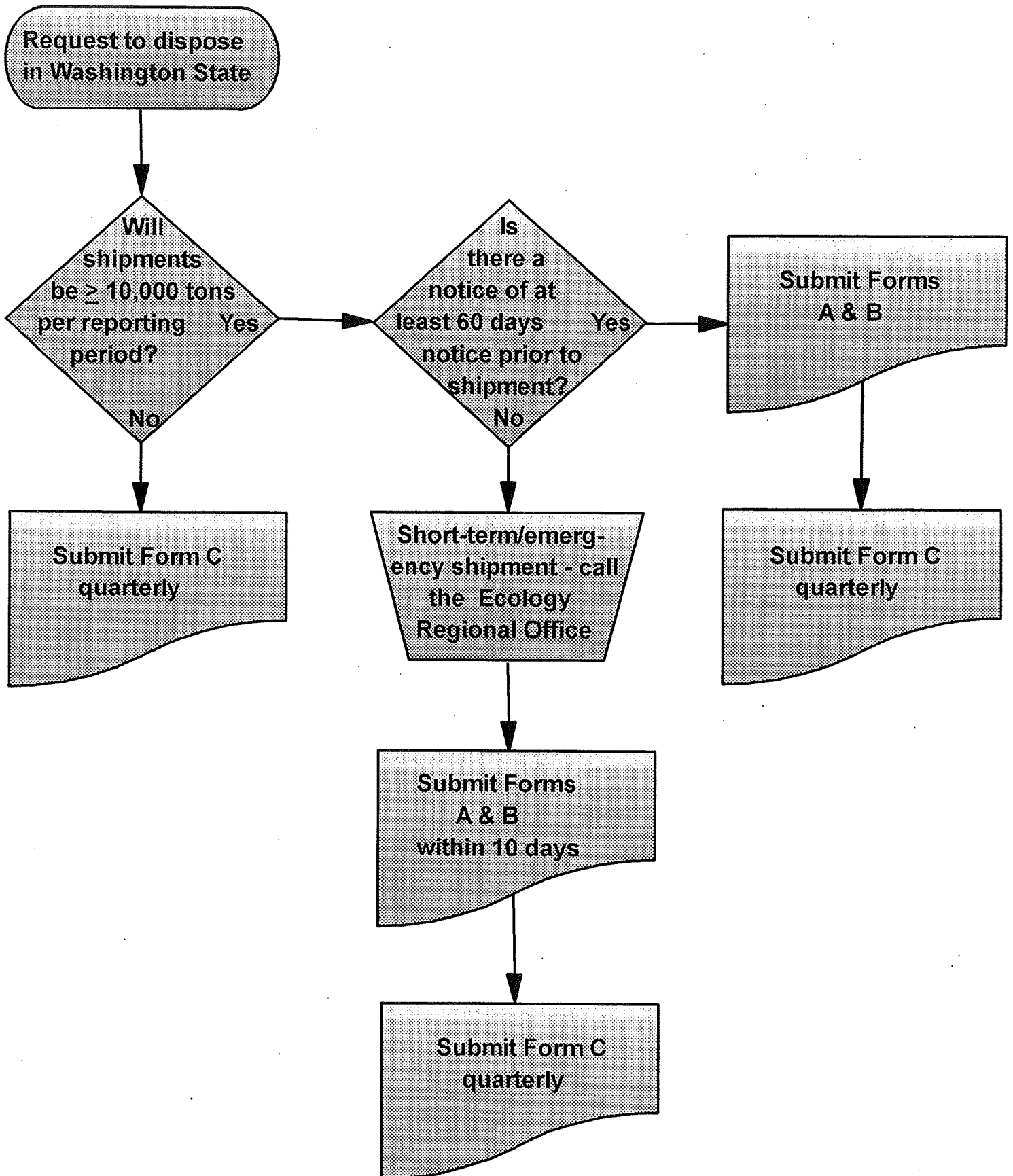
The receiving disposal facility will be responsible for meeting all applicable regulations and permit requirements for their facility, and being in conformance with the local solid waste comprehensive plan.

## **ENFORCEMENT**

---

Any enforcement actions necessary to implement these guidelines will be carried out under Ecology's authority in chapter 70.95 RCW.

# FLOWCHART FOR REPORTING IMPORTED SOLID WASTE





**PLEASE NOTE:** For a more thorough discussion of the subjects below, please see the appropriate section in the Guidelines for Reporting Imported Solid Waste.

**PLEASE NOTE:** Disposal facility computer-generated forms will be accepted in lieu of the printed forms, provided that all of the requested reporting information is included.

---

**Reporting Period** is the 12-month period following the start of a contract with the reporting entity.

**Substantially Equivalent** is a determination that a comprehensive solid waste management program of a state, province, or country provides comparable services to those provided in Washington state.

**Form A - Notification To Receive Out-Of-State Solid Waste That Exceeds 10,000 Tons Per Reporting Period**

Submit to Ecology headquarters at least 60 days before receiving shipment(s) expected to exceed 10,000 tons per reporting period, unless the shipments are short-term/emergency (see below).

If the solid waste listed on Form A is not transported to the state with six months from the date of the first expected shipment, another Form A will be need to be re-submitted, with any modifications, to Ecology headquarters.

At the start of each new reporting period, a revised Form A for that reporting entity will need to be submitted to Ecology headquarters.

**Form B - State, Province, Or Country Substantial Equivalency Determination**

Submit to Ecology headquarters at least 60 days before receiving shipment(s) expected to exceed 10,000 tons per reporting period, unless the shipments are short-term/emergency (see below).

Ecology will notify the disposal facility **within ten (10) working days** after the receipt of the Substantial Equivalency review form as to the completeness of the form. If the form is not complete, the department will specify the additional information that is needed.

For equivalency review, the department will notify the disposal facility **within thirty (30) days** of receipt of a **completed** equivalency review form whether the solid waste management program of the state, province, or country is/is not substantially equivalent to the comprehensive solid waste management program in Washington state.

Form B will be required to be submitted only once every five (5) years for each state, province, or country in which the generator is located. Once Substantial Equivalency has been satisfactorily determined, all solid waste from that state, province, or country is included for that five-year period, and no further Substantial Equivalency reporting will be required during that time. If a determination of Substantial Equivalency has already been made for a state, province, or country, that determination will be acceptable for other facilities. For a current list of states/provinces/countries that have met the Substantial Equivalency requirements and the Substantial Equivalency expiration dates, contact Ecology headquarters.

Every five (5) years, Form B needs to be updated and submitted to Ecology headquarters for a re-evaluation of equivalency.

**Please Note:** For those shipments that fall under the substantial equivalency review, solid waste cannot be accepted at the disposal facility until it is determined that the solid waste program of the state, province, or country is substantially equivalent.

**Form C - Quarterly Summary Of Solid Waste Shipments Received From Out-Of-State**

Disposal facilities are required to report all quantities of solid waste received from out-of-state on Form C to Ecology headquarters.

The disposal facility shall submit Form C to Ecology headquarters **within one (1) month following the end of each calendar quarter**. The due dates are as follows:

Quarter 1:	April 30	(for January through March)
Quarter 2:	July 31	(for April through June)
Quarter 3:	October 31	(for July through September)
Quarter 4:	January 31	(for October through December)

**Short-Term/Emergency Shipments** are shipments of solid waste that will arrive at the disposal facility with **less than 60-days notice**, may or may not exceed 10,000 tons in a reporting period, may arrive on a one-time or irregular basis, or may be only the first shipment of multiple shipments of solid waste from the same occurrence or situation. Examples of causes are an unexpected landfill closure or incinerator shutdown, a natural disaster, or clean-up projects.

For short-term/emergency shipments where the shipments **potentially exceed 10,000 tons per reporting period**, the facility **must contact, by phone, the appropriate Ecology regional office** (see Appendix II) and provide information on source, type, estimated amount, and projected arrival date of the initial shipment of the solid waste and other information that the department deems appropriate.

The disposal facility must then submit the following required forms to Ecology headquarters **within ten (10) working days**:

**Form A - Notification To Receive Out-Of-State Solid Waste That Exceeds 10,000 Tons Per Reporting Period**

**Form B - State, Province, Or Country Substantial Equivalency Determination** (if one has not already been submitted and is on file with Ecology)

**Please note** that short-term/emergency shipments which exceed 10,000 tons per reporting period are subject to the Substantial Equivalency Determination requirement, but the determination of substantial equivalency need not be done in advance of the short-term/emergency shipment.

## **LOCAL GOVERNMENT DELEGATION**

---

Ecology may delegate, at the request of the local government jurisdiction, the responsibility of the "substantially equivalent" review process, as provided in RCW 70.95.218(2). The local government jurisdiction would be required to notify Ecology of its equivalency determination. All other reporting and notification requirements under these guidelines would continue to be made to Ecology.

### **Process for Delegation of Authority**

1. Ecology receives a letter or other form of formal notice, from a local government requesting delegation under RCW 70.95.218(2). The letter must be signed by an official of the local government authorized to obligate the local government to carry out the responsibilities of this delegation.
2. Ecology reviews the request for delegation, contacts the local government and enters into negotiation with them.
3. An interagency agreement is drawn up between Ecology and the local government stating the responsibilities of both parties.
4. Officials of both agencies sign and execute the agreement.

## **DUTIES FOR ECOLOGY: OLYMPIA HEADQUARTERS OFFICE**

---

Ecology headquarters will be responsible for the review and evaluation of the forms and the tracking of information received from disposal facilities for all out-of-state solid waste shipments.

The department will notify the disposal facility within ten (10) working days after the receipt of the notification and equivalency review forms, as applicable, as to the completeness of the forms.

Copies of the completed notification and substantial equivalency forms will be sent to the local health department, the local solid waste division, and the appropriate Ecology regional office.

For the equivalency review, the department will notify the disposal facility within thirty (30) days of receipt of a completed equivalency review form whether the solid waste management program of the other state, province, or country is/is not substantially equivalent to the comprehensive solid waste management program in Washington state.

Ecology may prohibit in-state disposal of solid waste generated outside the state if the generator doesn't meet the "substantially equivalent" review requirements for solid waste reduction, recycling, or solid waste handling practices used in Washington state.

## **DUTIES FOR ECOLOGY: REGIONAL OFFICES**

---

The regional office (see Appendix II) will be the contact point for the disposal facility operator in the case of a short-term/emergency shipment. It will also forward the information concerning any short-term/emergency shipment to Ecology headquarters.

Upon request of headquarters, the regional office will verify the compliance status of the solid waste disposal facility with the local health department, and will confirm that the local comprehensive solid waste management plan is current.

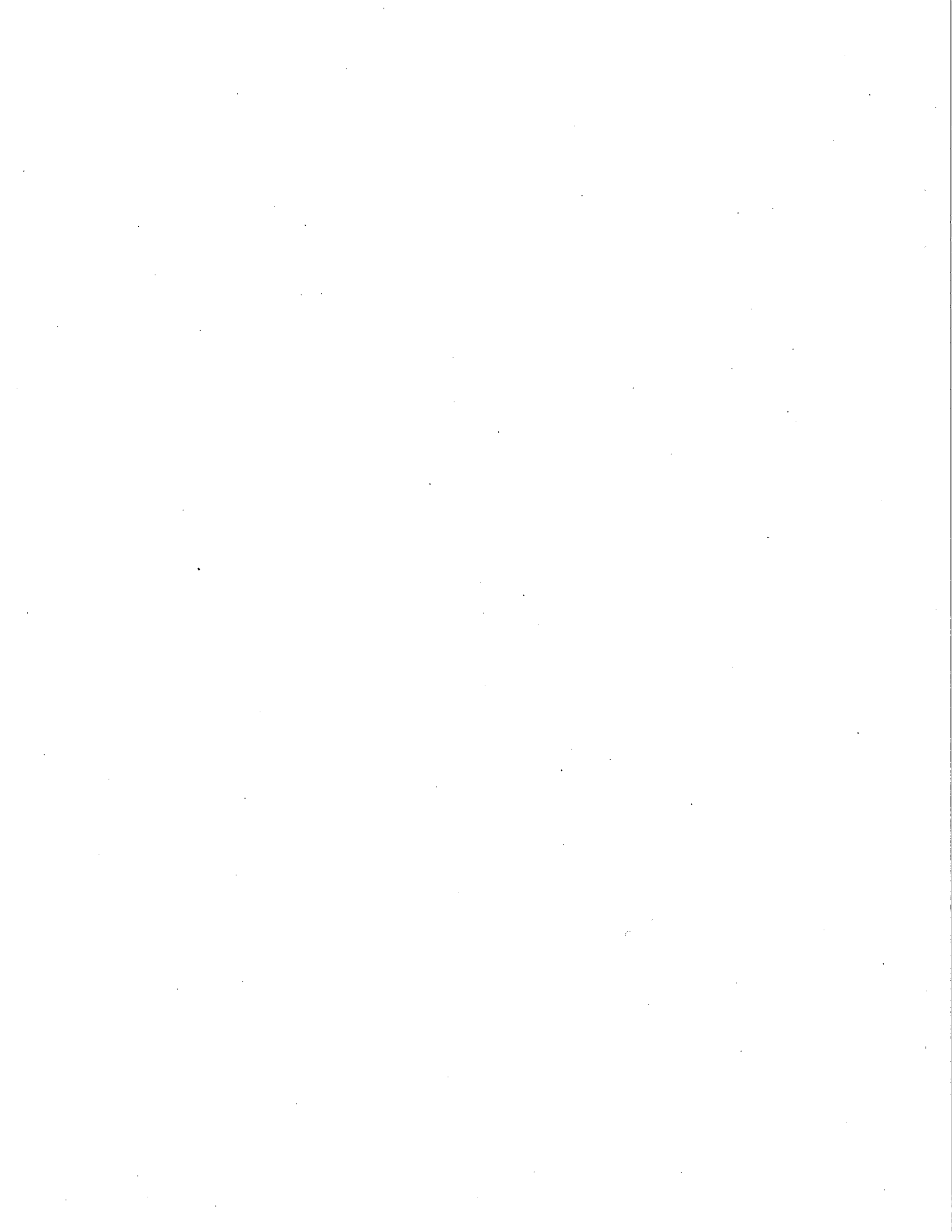


## **APPENDIX I: REPORT FORMS**

**Form A: Notification To Receive Out-Of-State Solid Waste That Exceeds 10,000 Tons Per Reporting Period**

**Form B: State, Province, or Country Substantial Equivalency Determination**

**Form C: Quarterly Summary Of Solid Waste Shipments Received From Out-Of-State**



**FORM A: NOTIFICATION TO RECEIVE OUT-OF-STATE SOLID WASTE  
THAT EXCEEDS 10,000 TONS PER REPORTING PERIOD**

**This form must be submitted to the Department of Ecology 60 days prior to  
out-of-state waste delivery (see back for address)**

<p>A. EXPECTED DATE OF RECEIPT OF FIRST SHIPMENT:</p>	<p>B. STATE/PROVINCE/COUNTRY OF ORIGIN:</p> <p>_____</p> <p>COUNTY: _____</p>																												
<p>C. HAS SUBSTANTIAL EQUIVALENCY DETERMINATION (FORM B) BEEN SUBMITTED TO ECOLOGY FOR THIS STATE/PROVINCE/COUNTRY WITHIN THE LAST FIVE YEARS?    <input type="checkbox"/> YES    <input type="checkbox"/> NO    If no, please submit Form B.</p>																													
<p>D. TO (RECEIVING FACILITY NAME):</p>	<p>E. FACILITY TYPE:</p>																												
<p>F. PLEASE CHECK THE TYPE OF GENERATOR:                      <input type="checkbox"/> Public                      <input type="checkbox"/> Non-Public</p>																													
<p>G. ESTIMATED AMOUNT AND TYPE OF WASTE IN SHIPMENT:</p> <table border="1" style="width:100%; border-collapse: collapse;"> <thead> <tr> <th style="width:50%;">PLEASE CHECK</th> <th style="width:50%;">SPECIFY ESTIMATED AMOUNT (in tons)</th> </tr> </thead> <tbody> <tr> <td><input type="checkbox"/> 1. Municipal Solid Waste:</td> <td></td> </tr> <tr> <td><input type="checkbox"/> 2. Demolition Waste:</td> <td></td> </tr> <tr> <td><input type="checkbox"/> 3. Industrial Waste (specify type of waste):</td> <td></td> </tr> <tr> <td><input type="checkbox"/> 4. Inert Waste:</td> <td></td> </tr> <tr> <td><input type="checkbox"/> 5. Commercial Waste (specify type of waste):</td> <td></td> </tr> <tr> <td><input type="checkbox"/> 6. Wood Waste:</td> <td></td> </tr> <tr> <td><input type="checkbox"/> 7. Sewage Sludge/Septage:</td> <td></td> </tr> <tr> <td><input type="checkbox"/> 8. Asbestos:</td> <td></td> </tr> <tr> <td><input type="checkbox"/> 9. Petroleum Contaminated Soils:</td> <td></td> </tr> <tr> <td><input type="checkbox"/> 10. Medical Waste</td> <td></td> </tr> <tr> <td><input type="checkbox"/> 11. Tires</td> <td></td> </tr> <tr> <td><input type="checkbox"/> 12. Other (specify):</td> <td></td> </tr> <tr> <td><b>13. Total</b></td> <td></td> </tr> </tbody> </table>		PLEASE CHECK	SPECIFY ESTIMATED AMOUNT (in tons)	<input type="checkbox"/> 1. Municipal Solid Waste:		<input type="checkbox"/> 2. Demolition Waste:		<input type="checkbox"/> 3. Industrial Waste (specify type of waste):		<input type="checkbox"/> 4. Inert Waste:		<input type="checkbox"/> 5. Commercial Waste (specify type of waste):		<input type="checkbox"/> 6. Wood Waste:		<input type="checkbox"/> 7. Sewage Sludge/Septage:		<input type="checkbox"/> 8. Asbestos:		<input type="checkbox"/> 9. Petroleum Contaminated Soils:		<input type="checkbox"/> 10. Medical Waste		<input type="checkbox"/> 11. Tires		<input type="checkbox"/> 12. Other (specify):		<b>13. Total</b>	
PLEASE CHECK	SPECIFY ESTIMATED AMOUNT (in tons)																												
<input type="checkbox"/> 1. Municipal Solid Waste:																													
<input type="checkbox"/> 2. Demolition Waste:																													
<input type="checkbox"/> 3. Industrial Waste (specify type of waste):																													
<input type="checkbox"/> 4. Inert Waste:																													
<input type="checkbox"/> 5. Commercial Waste (specify type of waste):																													
<input type="checkbox"/> 6. Wood Waste:																													
<input type="checkbox"/> 7. Sewage Sludge/Septage:																													
<input type="checkbox"/> 8. Asbestos:																													
<input type="checkbox"/> 9. Petroleum Contaminated Soils:																													
<input type="checkbox"/> 10. Medical Waste																													
<input type="checkbox"/> 11. Tires																													
<input type="checkbox"/> 12. Other (specify):																													
<b>13. Total</b>																													

(Form Continued on Back Page)

**FOR AGENCY USE  
ONLY**

NO. \_\_\_\_\_

<b>H. PLEASE CHECK THE FOLLOWING SOURCES OF WASTE INCLUDED IN SHIPMENT:</b> <input type="checkbox"/> Household/residential <input type="checkbox"/> Business/commercial <input type="checkbox"/> Industry (specify type) _____ <input type="checkbox"/> Hospital/medical facility <input type="checkbox"/> Other (specify) _____	
<b>I. WILL THERE BE MULTIPLE SHIPMENTS FROM THIS SOURCE OF WASTE:</b> <input type="checkbox"/> NO <input type="checkbox"/> YES If yes: Frequency of shipments: _____ Expected duration of contract: _____	
<b>J. RECEIVING FACILITY CONTACT:</b>	<b>K. COUNTY WHERE RECEIVING FACILITY IS LOCATED:</b>
<b>L. RECEIVING FACILITY CONTACT ADDRESS:</b>	<b>M. RECEIVING FACILITY CONTACT PHONE:</b>
<b>N. NAME OF SENDER:</b>	<b>O. SENDER CONTACT:</b>
<b>P. SENDER ADDRESS:</b>	<b>Q. CONTACT PHONE:</b>
<b>R. NAME OF HAULER:</b>	<b>S. HAULER CONTACT:</b>
<b>T. HAULER ADDRESS:</b>	<b>U. HAULER PHONE</b>

<b>PREPARED BY:</b>	<b>DATE:</b>	<b>PHONE:</b>
---------------------	--------------	---------------

Return completed form (forms) to:

Ellen O. Caywood  
 Solid Waste Services Program  
 Department of Ecology  
 PO Box 47600  
 Olympia, WA 98504-7600  
 (206) 407-6132

FOR AGENCY USE  
 ONLY  
 NO. \_\_\_\_\_



## FORM B: STATE, PROVINCE, OR COUNTRY SUBSTANTIALLY EQUIVALENT DETERMINATION

**Submit this form, as applicable, to the Department of Ecology to obtain a substantially equivalent determination before receiving out-of-state solid waste**

<p><b>A. CONTACT NAME OF STATE, PROVINCE, OR COUNTRY SOLID WASTE ENTITY:</b></p> <p>Name _____</p> <p>Address _____</p> <p>Phone _____</p>	<p><b>B. STATE, PROVINCE, OR COUNTRY OF ORIGIN:</b></p> <p>_____</p> <p>_____</p> <p>_____</p>			
<p><b>C. Does the state/province/country have legislatively established goals?</b></p> <p>Waste Reduction:    YES <input type="checkbox"/>    NO <input type="checkbox"/></p> <p>    Target date _____</p> <p>Recycling:            YES <input type="checkbox"/>    NO <input type="checkbox"/></p> <p>    Target date _____</p> <p>Other: _____</p>	<p><b>D. What are the legislatively established goals?</b></p> <p>Waste Reduction:</p> <p>    Weight/volume _____ Percent _____</p> <p>    Other _____</p> <p>Recycling:</p> <p>    Weight/volume _____ Percent _____</p> <p>    Other _____</p> <p>Other goals: _____</p>			
<p><b>E. Does the state/province/country have a solid waste management plan?</b></p> <p style="text-align: right;">YES <input type="checkbox"/>    NO <input type="checkbox"/></p> <p>Plan completion date _____</p> <p>Effective date _____</p>	<p><b>F. Does the state/country/province solid waste management plan include components for:</b></p> <p>Waste Reduction    YES <input type="checkbox"/>    NO <input type="checkbox"/></p> <p>Recycling            YES <input type="checkbox"/>    NO <input type="checkbox"/></p> <p>Other _____</p>			
<p><b>G. Are local governments required to have solid waste management plans?</b>    YES <input type="checkbox"/>    NO <input type="checkbox"/></p> <p>Do the local plans include: Check appropriate box(es)</p> <table style="width: 100%; border: none;"> <tr> <td style="width: 33%; vertical-align: top; padding: 5px;"> <p><b>Waste reduction elements:</b></p> <p><input type="checkbox"/> Education</p> <p><input type="checkbox"/> Market development</p> <p><input type="checkbox"/> Procurement</p> <p><input type="checkbox"/> Outreach/technical assistance</p> <p><input type="checkbox"/> Other _____</p> </td> <td style="width: 33%; vertical-align: top; padding: 5px;"> <p><b>Recycling elements:</b></p> <p><input type="checkbox"/> Curbside</p> <p><input type="checkbox"/> Drop box</p> <p><input type="checkbox"/> Buy-back</p> <p><input type="checkbox"/> Education</p> <p><input type="checkbox"/> Technical assistance</p> <p><input type="checkbox"/> Procurement</p> <p><input type="checkbox"/> Market development</p> <p><input type="checkbox"/> Other _____</p> </td> <td style="width: 33%; vertical-align: top; padding: 5px;"> <p><b>Household hazardous waste elements:</b></p> <p><input type="checkbox"/> Collection days</p> <p><input type="checkbox"/> Curbside pick-up</p> <p><input type="checkbox"/> Drop off</p> <p><input type="checkbox"/> Fixed facility</p> <p><input type="checkbox"/> Education</p> <p><input type="checkbox"/> Outreach/technical assistance</p> <p><input type="checkbox"/> Other _____</p> </td> </tr> </table>		<p><b>Waste reduction elements:</b></p> <p><input type="checkbox"/> Education</p> <p><input type="checkbox"/> Market development</p> <p><input type="checkbox"/> Procurement</p> <p><input type="checkbox"/> Outreach/technical assistance</p> <p><input type="checkbox"/> Other _____</p>	<p><b>Recycling elements:</b></p> <p><input type="checkbox"/> Curbside</p> <p><input type="checkbox"/> Drop box</p> <p><input type="checkbox"/> Buy-back</p> <p><input type="checkbox"/> Education</p> <p><input type="checkbox"/> Technical assistance</p> <p><input type="checkbox"/> Procurement</p> <p><input type="checkbox"/> Market development</p> <p><input type="checkbox"/> Other _____</p>	<p><b>Household hazardous waste elements:</b></p> <p><input type="checkbox"/> Collection days</p> <p><input type="checkbox"/> Curbside pick-up</p> <p><input type="checkbox"/> Drop off</p> <p><input type="checkbox"/> Fixed facility</p> <p><input type="checkbox"/> Education</p> <p><input type="checkbox"/> Outreach/technical assistance</p> <p><input type="checkbox"/> Other _____</p>
<p><b>Waste reduction elements:</b></p> <p><input type="checkbox"/> Education</p> <p><input type="checkbox"/> Market development</p> <p><input type="checkbox"/> Procurement</p> <p><input type="checkbox"/> Outreach/technical assistance</p> <p><input type="checkbox"/> Other _____</p>	<p><b>Recycling elements:</b></p> <p><input type="checkbox"/> Curbside</p> <p><input type="checkbox"/> Drop box</p> <p><input type="checkbox"/> Buy-back</p> <p><input type="checkbox"/> Education</p> <p><input type="checkbox"/> Technical assistance</p> <p><input type="checkbox"/> Procurement</p> <p><input type="checkbox"/> Market development</p> <p><input type="checkbox"/> Other _____</p>	<p><b>Household hazardous waste elements:</b></p> <p><input type="checkbox"/> Collection days</p> <p><input type="checkbox"/> Curbside pick-up</p> <p><input type="checkbox"/> Drop off</p> <p><input type="checkbox"/> Fixed facility</p> <p><input type="checkbox"/> Education</p> <p><input type="checkbox"/> Outreach/technical assistance</p> <p><input type="checkbox"/> Other _____</p>		

H. Does the state/province/country exclude any specific solid wastes from disposal in municipal solid waste landfills or municipal solid waste incineration? YES  NO

Please check those wastes excluded from: D = disposal I = incineration

- |  |  |
|--|--|
| <input type="checkbox"/> <input type="checkbox"/> Municipal solid waste incinerator ash                | <input type="checkbox"/> <input type="checkbox"/> Household hazardous waste      |
| <input type="checkbox"/> <input type="checkbox"/> Batteries  | <input type="checkbox"/> <input type="checkbox"/> White goods                    |
| <input type="checkbox"/> <input type="checkbox"/> Motor oil  | <input type="checkbox"/> <input type="checkbox"/> Tires                          |
| <input type="checkbox"/> <input type="checkbox"/> Dangerous waste (as defined in Washington state law) | <input type="checkbox"/> <input type="checkbox"/> Other (specify) _____<br>_____ |

I. Circle procedures in place in the state/province/country:

- |                           |  |
|---------------------------|--|
| Bottle bill               | Recycled content packaging regulations |
| Market development policy | Variable rate collection fees          |
| Advanced disposal fees    | Take back laws                         |
| Procurement policy        | Other (specify) _____<br>_____         |
| Deposit fees: Tires       |  |
| Vehicle batteries         |  |
| White goods               |  |
| Other (specify) _____     |  |

Prepared by:	Date:	Phone:
--------------	-------	--------

Return completed form (forms) to:

Ellen O. Caywood  
Solid Waste Services Program  
Department of Ecology  
PO Box 47600  
Olympia, WA 98504-7600  
(206) 407-6132



PREPARED BY:	DATE:	PHONE:
--------------	-------	--------

Return completed form (forms) to:

Ellen O. Caywood  
Solid Waste Services Program  
Department of Ecology  
PO Box 47600  
Olympia, WA 98504-7600  
(206) 407-6132

FOR AGENCY USE  
ONLY

NO. \_\_\_\_\_

**FORM B: STATE, PROVINCE, OR COUNTRY  
SUBSTANTIALLY EQUIVALENT DETERMINATION**

**Submit this form, as applicable, to the Department of Ecology to obtain a  
substantially equivalent determination before receiving out-of-state solid waste**

<p><b>A. CONTACT NAME OF STATE, PROVINCE, OR COUNTRY SOLID WASTE ENTITY:</b></p> <p>Name _____</p> <p>Address _____</p> <p>_____</p> <p>Phone _____</p>	<p><b>B. STATE, PROVINCE, OR COUNTRY OF ORIGIN:</b></p> <p>_____</p> <p>_____</p> <p>_____</p>			
<p><b>C. Does the state/province/country have legislatively established goals?</b></p> <p>Waste Reduction:    YES <input type="checkbox"/>    NO <input type="checkbox"/></p> <p>    Target date _____</p> <p>Recycling:            YES <input type="checkbox"/>    NO <input type="checkbox"/></p> <p>    Target date _____</p> <p>Other: _____</p>	<p><b>D. What are the legislatively established goals?</b></p> <p>Waste Reduction:</p> <p>    Weight/volume _____ Percent _____</p> <p>    Other _____</p> <p>Recycling:</p> <p>    Weight/volume _____ Percent _____</p> <p>    Other _____</p> <p>Other goals: _____</p>			
<p><b>E. Does the state/province/country have a solid waste management plan?</b></p> <p align="right">YES <input type="checkbox"/>    NO <input type="checkbox"/></p> <p>Plan completion date _____</p> <p>Effective date _____</p>	<p><b>F. Does the state/country/province solid waste management plan include components for:</b></p> <p>Waste Reduction    YES <input type="checkbox"/>    NO <input type="checkbox"/></p> <p>Recycling            YES <input type="checkbox"/>    NO <input type="checkbox"/></p> <p>Other _____</p>			
<p><b>G. Are local governments required to have solid waste management plans?    YES <input type="checkbox"/>    NO <input type="checkbox"/></b></p> <p>Do the local plans include: Check appropriate box(es)</p> <table style="width:100%; border: none;"> <tr> <td style="width:33%; vertical-align: top; padding: 5px;"> <p><b>Waste reduction elements:</b></p> <p><input type="checkbox"/> Education</p> <p><input type="checkbox"/> Market development</p> <p><input type="checkbox"/> Procurement</p> <p><input type="checkbox"/> Outreach/technical assistance</p> <p><input type="checkbox"/> Other _____</p> </td> <td style="width:33%; vertical-align: top; padding: 5px;"> <p><b>Recycling elements:</b></p> <p><input type="checkbox"/> Curbside</p> <p><input type="checkbox"/> Drop box</p> <p><input type="checkbox"/> Buy-back</p> <p><input type="checkbox"/> Education</p> <p><input type="checkbox"/> Technical assistance</p> <p><input type="checkbox"/> Procurement</p> <p><input type="checkbox"/> Market development</p> <p><input type="checkbox"/> Other _____</p> </td> <td style="width:33%; vertical-align: top; padding: 5px;"> <p><b>Household hazardous waste elements:</b></p> <p><input type="checkbox"/> Collection days</p> <p><input type="checkbox"/> Curbside pick-up</p> <p><input type="checkbox"/> Drop off</p> <p><input type="checkbox"/> Fixed facility</p> <p><input type="checkbox"/> Education</p> <p><input type="checkbox"/> Outreach/technical assistance</p> <p><input type="checkbox"/> Other _____</p> </td> </tr> </table>		<p><b>Waste reduction elements:</b></p> <p><input type="checkbox"/> Education</p> <p><input type="checkbox"/> Market development</p> <p><input type="checkbox"/> Procurement</p> <p><input type="checkbox"/> Outreach/technical assistance</p> <p><input type="checkbox"/> Other _____</p>	<p><b>Recycling elements:</b></p> <p><input type="checkbox"/> Curbside</p> <p><input type="checkbox"/> Drop box</p> <p><input type="checkbox"/> Buy-back</p> <p><input type="checkbox"/> Education</p> <p><input type="checkbox"/> Technical assistance</p> <p><input type="checkbox"/> Procurement</p> <p><input type="checkbox"/> Market development</p> <p><input type="checkbox"/> Other _____</p>	<p><b>Household hazardous waste elements:</b></p> <p><input type="checkbox"/> Collection days</p> <p><input type="checkbox"/> Curbside pick-up</p> <p><input type="checkbox"/> Drop off</p> <p><input type="checkbox"/> Fixed facility</p> <p><input type="checkbox"/> Education</p> <p><input type="checkbox"/> Outreach/technical assistance</p> <p><input type="checkbox"/> Other _____</p>
<p><b>Waste reduction elements:</b></p> <p><input type="checkbox"/> Education</p> <p><input type="checkbox"/> Market development</p> <p><input type="checkbox"/> Procurement</p> <p><input type="checkbox"/> Outreach/technical assistance</p> <p><input type="checkbox"/> Other _____</p>	<p><b>Recycling elements:</b></p> <p><input type="checkbox"/> Curbside</p> <p><input type="checkbox"/> Drop box</p> <p><input type="checkbox"/> Buy-back</p> <p><input type="checkbox"/> Education</p> <p><input type="checkbox"/> Technical assistance</p> <p><input type="checkbox"/> Procurement</p> <p><input type="checkbox"/> Market development</p> <p><input type="checkbox"/> Other _____</p>	<p><b>Household hazardous waste elements:</b></p> <p><input type="checkbox"/> Collection days</p> <p><input type="checkbox"/> Curbside pick-up</p> <p><input type="checkbox"/> Drop off</p> <p><input type="checkbox"/> Fixed facility</p> <p><input type="checkbox"/> Education</p> <p><input type="checkbox"/> Outreach/technical assistance</p> <p><input type="checkbox"/> Other _____</p>		

H. Does the state/province/country exclude any specific solid wastes from disposal in municipal solid waste landfills or municipal solid waste incineration? YES  NO

Please check those wastes excluded from: D = disposal I = incineration

- |                          |                          |                          |                          |
|--------------------------|--------------------------|--------------------------|--------------------------|
| D                        | I                        | D                        | I                        |
| <input type="checkbox"/> | <input type="checkbox"/> | <input type="checkbox"/> | <input type="checkbox"/> |
| <input type="checkbox"/> | <input type="checkbox"/> | <input type="checkbox"/> | <input type="checkbox"/> |
| <input type="checkbox"/> | <input type="checkbox"/> | <input type="checkbox"/> | <input type="checkbox"/> |
| <input type="checkbox"/> | <input type="checkbox"/> | <input type="checkbox"/> | <input type="checkbox"/> |
| <input type="checkbox"/> | <input type="checkbox"/> | <input type="checkbox"/> | <input type="checkbox"/> |
- Municipal solid waste incinerator ash      Household hazardous waste
- Batteries      White goods
- Motor oil      Tires
- Dangerous waste (as defined in Washington state law)      Other (specify) \_\_\_\_\_
- \_\_\_\_\_

I. Circle procedures in place in the state/province/country:

- |                           |  |
|---------------------------|--|
| Bottle bill               | Recycled content packaging regulations |
| Market development policy | Variable rate collection fees          |
| Advanced disposal fees    | Take back laws                         |
| Procurement policy        | Other (specify) _____                  |
| Deposit fees: Tires       | _____                                  |
| Vehicle batteries         |  |
| White goods               |  |
| Other (specify) _____     |  |

Prepared by:	Date:	Phone:
--------------	-------	--------

Return completed form (forms) to:

Ellen O. Caywood  
Solid Waste Services Program  
Department of Ecology  
PO Box 47600  
Olympia, WA 98504-7600  
(206) 407-6132

## **APPENDIX II: ECOLOGY CONTACTS**

### **SHORT-TERM/EMERGENCY SHIPMENTS:**

Contact the Ecology Regional Office for the county in which the receiving facility is located.

**Benton, Chelan, Douglas, Kittitas, Klickitat, Okanogan, Yakima**

Section Supervisor

Washington State Department of Ecology

Solid Waste Services Program

106 South 6th Avenue

Yakima, WA 98902-3387

(509) 454-7298; SCAN 558-7298

**Central Regional Office**

**Adams, Asotin, Columbia, Ferry, Franklin, Garfield, Grant, Lincoln, Pend Oreille, Spokane, Stevens, Walla Walla, Whitman**

Section Supervisor

Washington State Department of Ecology

Solid Waste Services Program

North 4601 Monroe Avenue, Suite 200

Spokane, WA 99205-1295

(509) 456-5055; SCAN 545-5055

**Eastern Regional Office**

**Island, King, Kitsap, San Juan, Skagit, Snohomish, Whatcom**

Section Supervisor

Washington State Department of Ecology

Solid Waste Services Program

Mail Stop NB-81

3190 - 160th Avenue SE

Bellevue, WA 98008-5452

(206) 649-7056; SCAN 354-7056

**Northwest Regional Office**

**Clallum, Clark, Cowlitz, Grays Harbor, Jefferson, Lewis, Mason, Pacific, Pierce, Skamania, Thurston, Wahkiakum**

Section Supervisor

Washington State Department of Ecology

Solid Waste Services Program

P.O. Box 47785

Olympia, WA 98504-7785

(206) 586-1220; SCAN 321-1220

**Southwest Regional Office**

**SUBSTANTIAL EQUIVALENCY REVIEW AND GENERAL INFORMATION:**  
Contact the Ecology Headquarters Office in Olympia.

Section Supervisor  
Washington State Department of Ecology  
Solid Waste Services Program  
300 Desmond Drive  
P.O. Box 47600  
Olympia, WA 98504-7600  
(206) 407-6092; SCAN 407-6092

**Headquarters Office**