

Watershed Characterization and Analysis of
South Lewis County

Lower Cowlitz River Watershed

March 23, 2009
Final Draft



Department of Ecology
Shorelands & Environmental Assistance Program

Final Characterization for South Lewis County

Lewis County Steering
Committee
for Winlock, Vader &
Toledo

March 26, 2009

A Watershed or Ecosystem Approach to Planning

Processes



Structure



Function

..such as water and sediment movement at the watershed scale

Broad Scale

..such as a stream channel or estuary

Mid Scale

..such as habitat for birds

Fine Scale

Understanding of Important Areas can help...

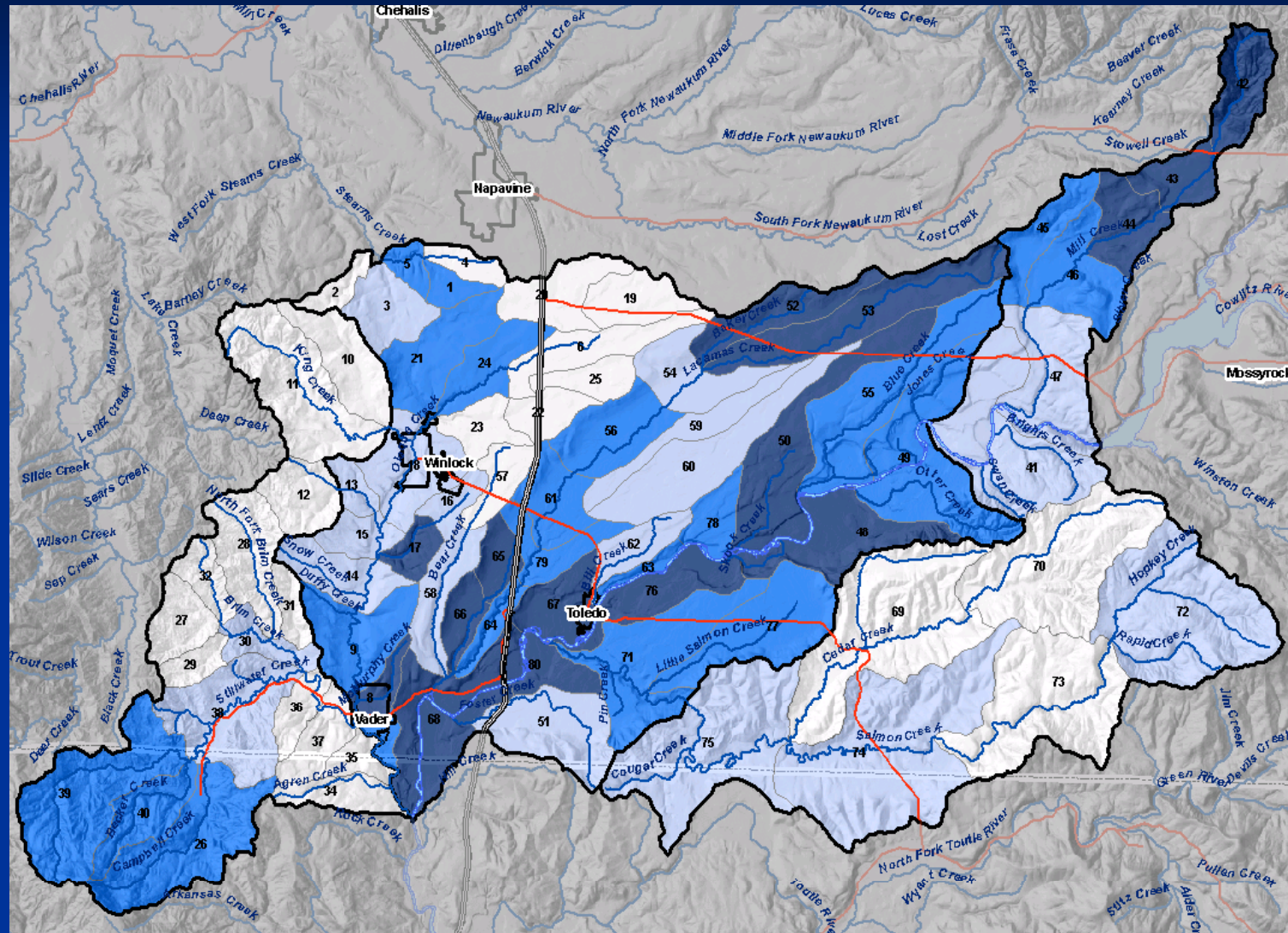


Guide future development

- Avoid creating environmental problems
- Protect groundwater resources
- Protect water quality
- Sustain aquatic ecosystems
- Reduce cost of infrastructure
- Streamline permitting
- Support Growth Management and Shoreline Management Planning

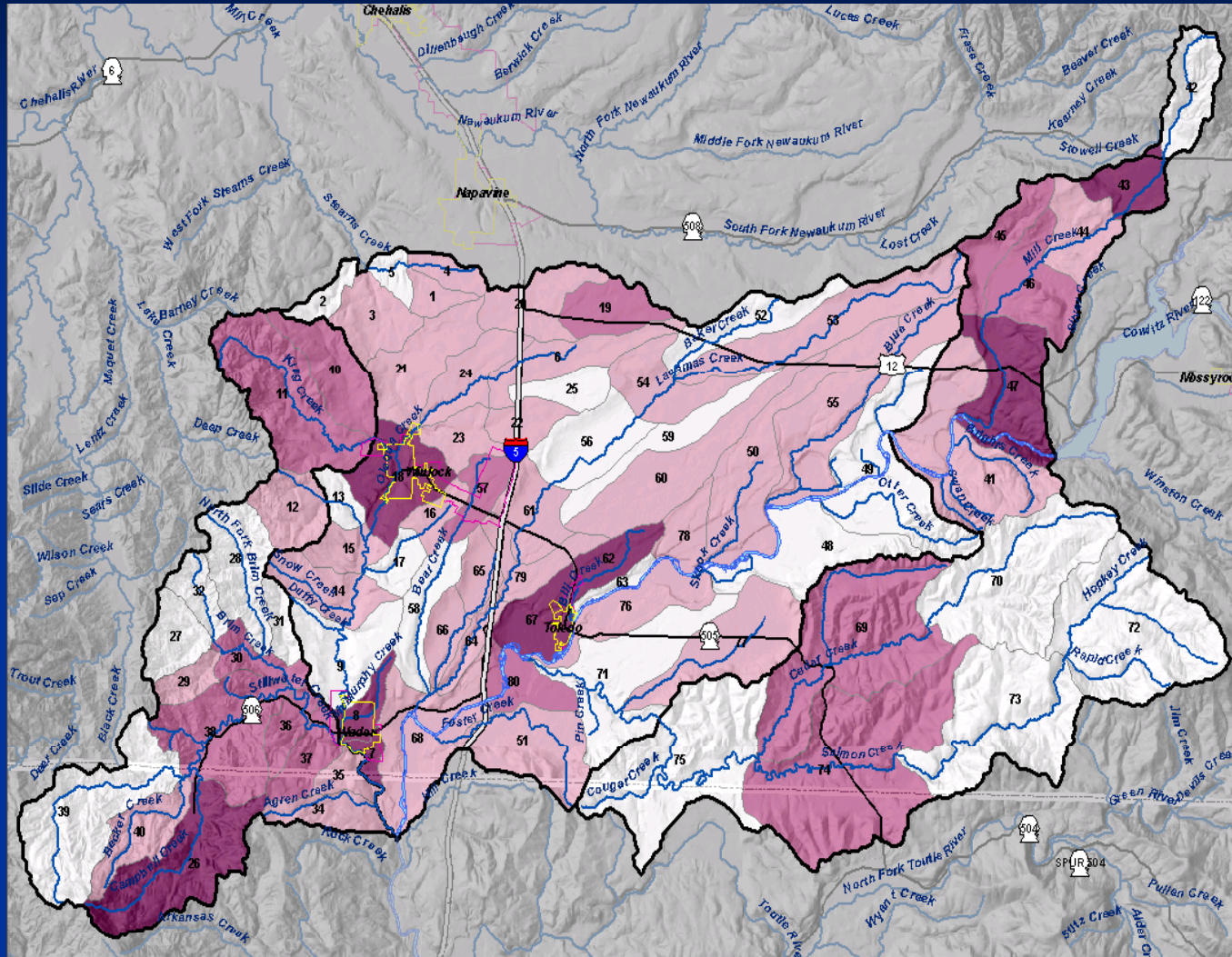


Important Areas for Water Flow



Dark Blue = high; Blue = mod high ; Light Blue = moderate; White = low

Impairment of Processes

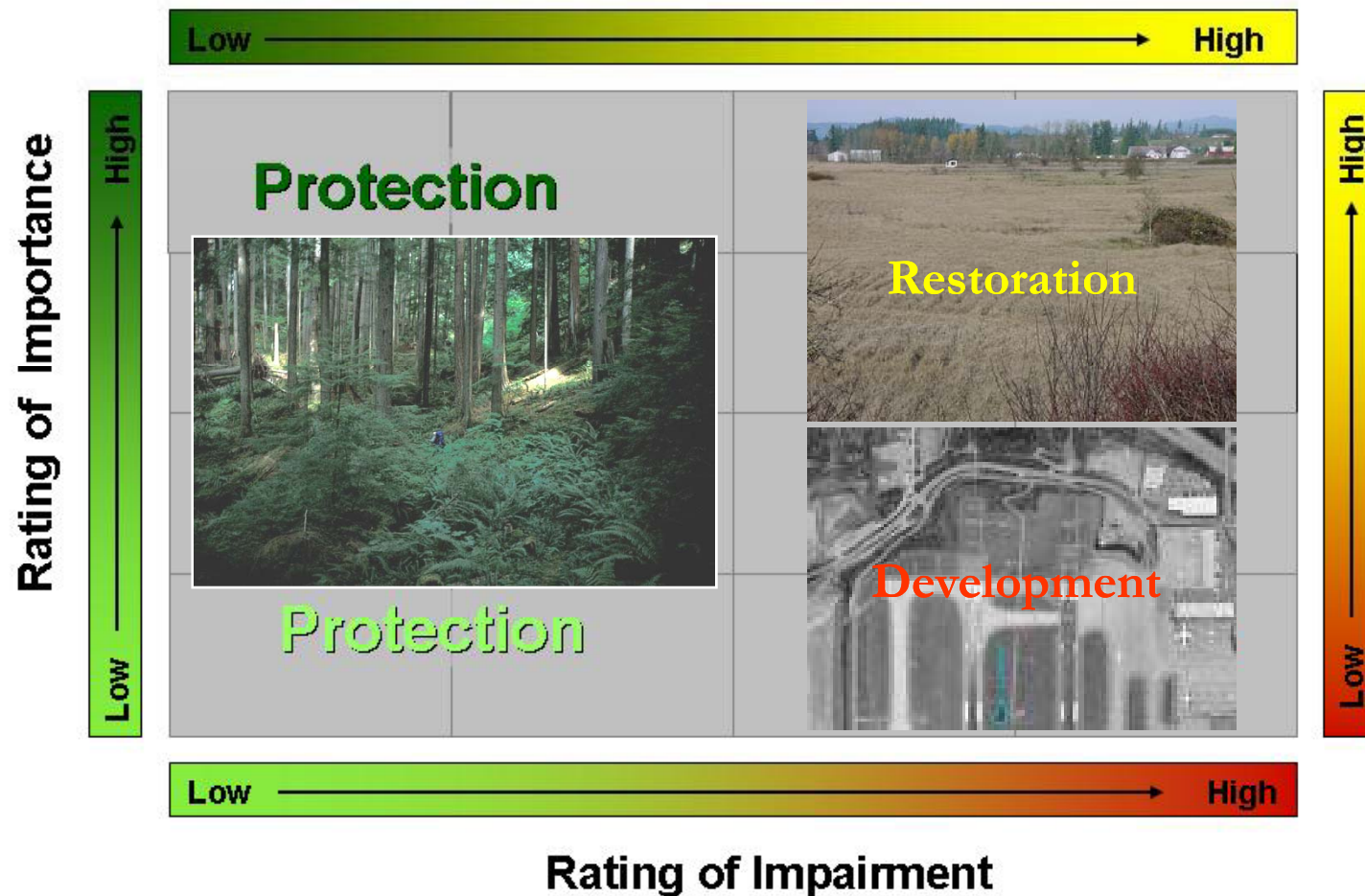


Dark Purple = High Impairment

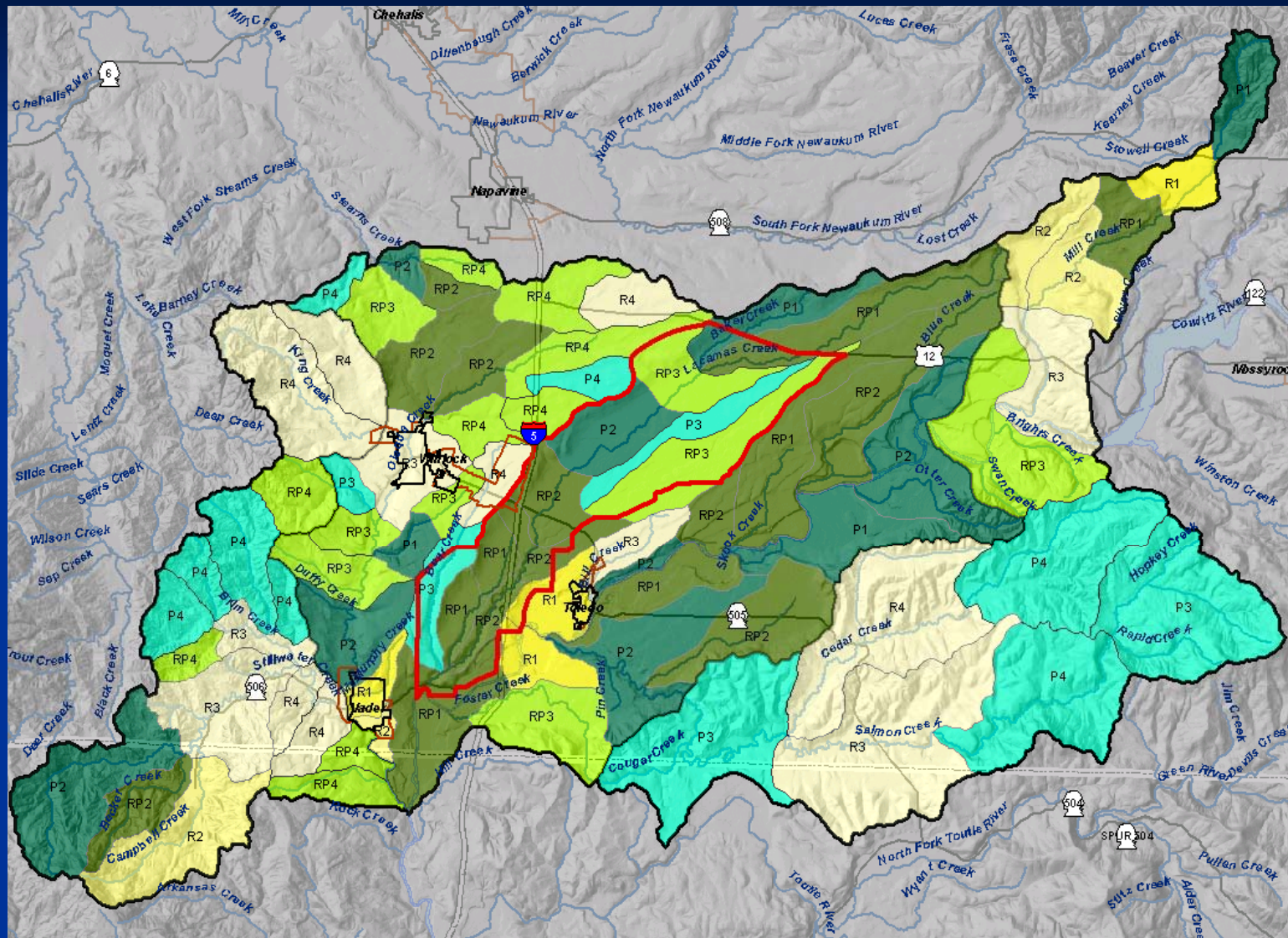
White = Low Impairment

Locate Areas for Protection and Restoration

Watershed Management Matrix



Restoration and Protection Priorities



Dark Green = Protection; Yellow = Restoration