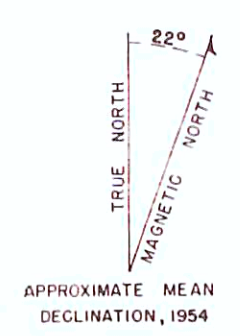
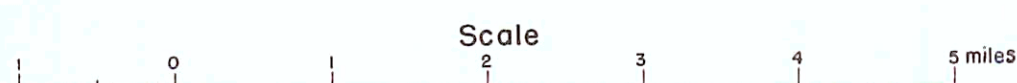


Base map from Portland and Camas quadrangles, scale 1/62,500, by the U.S. Geological Survey, and from LaCenter and Yacolt quadrangles, scale 1/62,500, by the U.S. Army Engineers. (Land surface contours locally incorrect on northwest part of plate 1)

GEOLOGIC MAP OF WESTERN PART OF CLARK COUNTY, WASHINGTON





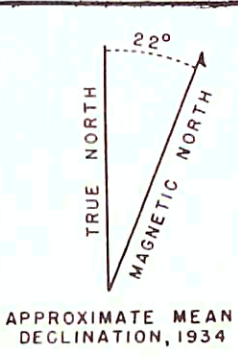
EXPLANATION

- 18N2
Representative well, described in table 15
- 25P1s
Representative spring, described in table 16
- 150 —
— 175 —
— 200 —
Contours drawn on principal ground-water body
Contour interval 50 feet, dashed where intermediate contours are shown. Datum is mean sea level.
- ▲ Lc375
Points of stream measurement

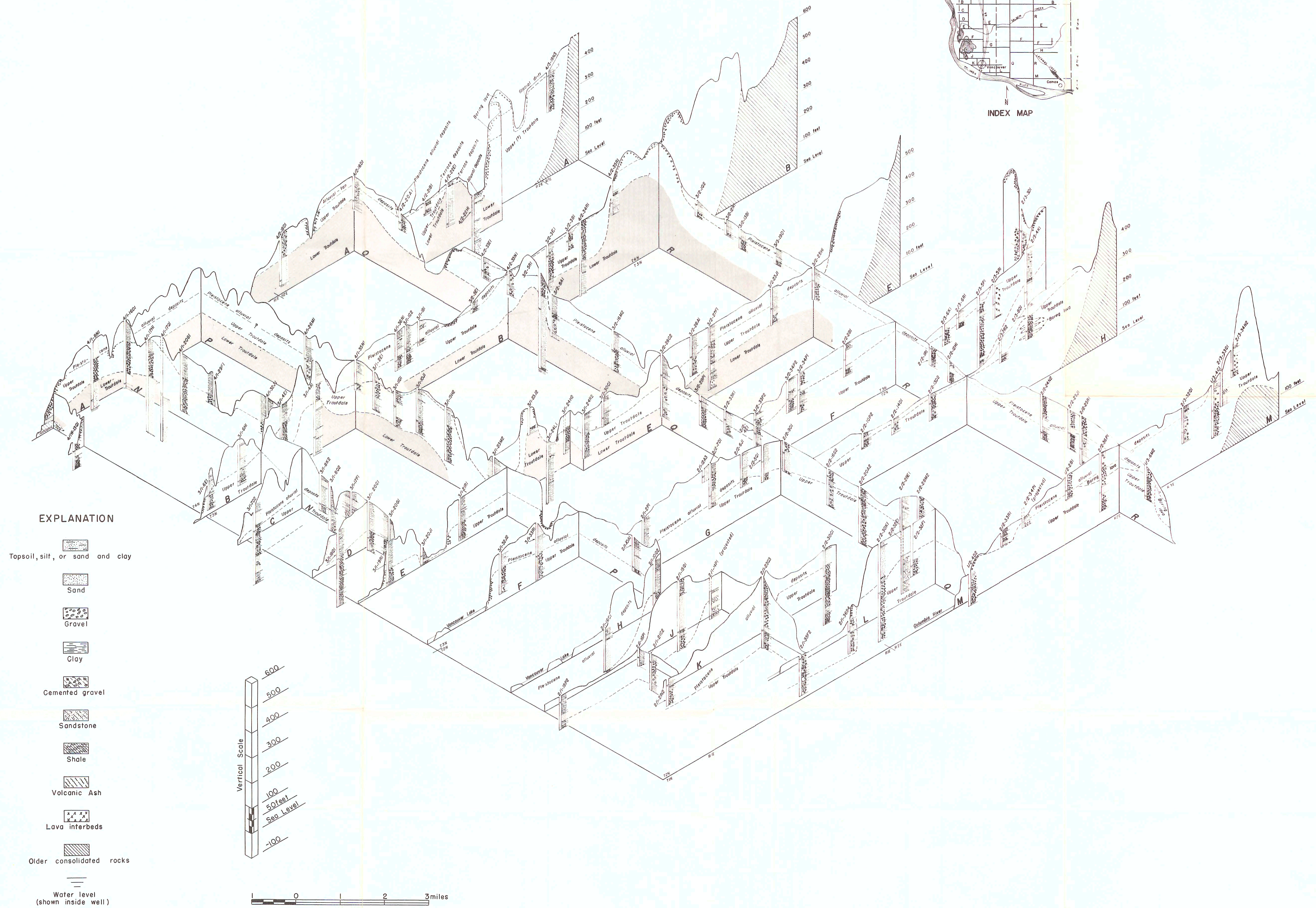
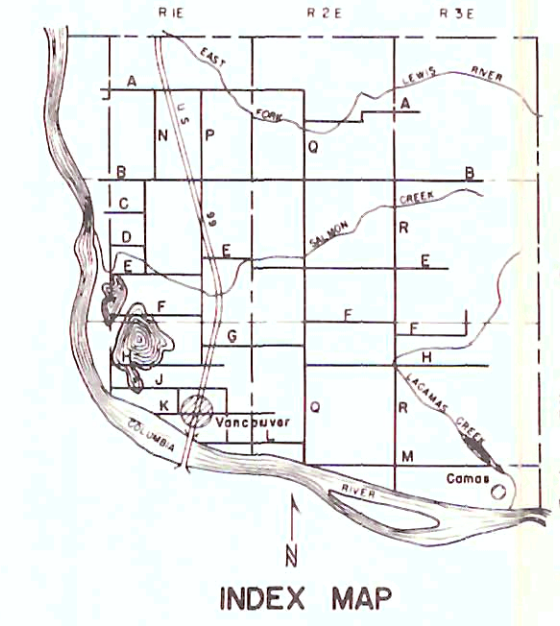
Base map from Portland and Comas quadrangles, scale 1/62,500, by the U.S. Geological Survey, and from LaCenter and Yacolt quadrangles, scale 1/62,500, by the U.S. Army Engineers. (Land surface contours locally incorrect on northwest part of plate 1)

MAP OF CLARK COUNTY SHOWING LOCATION OF WELLS AND SPRINGS, AND CONTOURS ON PRINCIPAL GROUND-WATER BODY

Scale
1/2 0 1 2 3 4 5 miles



APPROXIMATE MEAN DECLINATION, 1934



Upper Troutdale refers to upper member of Troutdale formation; lower Troutdale refers to lower member of Troutdale formation.

FENCE DIAGRAM SHOWING SUBSURFACE GEOLOGY OF SOUTHWESTERN CLARK COUNTY