

Lower Issaquah
Valley Wellhead
protection plan

98199331

E-1773

V.3

C.3

98199331

Golder Associates Inc.

4104-148th Avenue, NE
Redmond, WA 98052
Telephone (206) 883-0777
Fax (206) 882-5498



REPORT
TO
SAMMAMISH PLATEAU WATER
AND SEWER DISTRICT
ON
LOWER ISSAQUAH VALLEY
WELLHEAD PROTECTION PLAN
VOLUME 3: ACTION PLAN

Prepared by

Golder Associates Inc.
Redmond, Washington

May 18, 1995

913-1252.009

0124ba1.rpt

PROPERTY OF STATE OF WASHINGTON
DEPARTMENT OF ECOLOGY LIBRARY

TABLE OF CONTENTS

	<u>Page No.</u>
1. INTRODUCTION	1
2. PLANNING CONSIDERATIONS	2
2.1 Recent Planning Efforts in Issaquah Area	2
2.2 Wellhead Protection Project Approval Protocol	3
3. WELLHEAD PROTECTION IMPLEMENTATION	5
3.1 Designation of Wellhead Protection Areas	5
3.2 Land Use Zoning and Control	6
3.3 Special Permitting	7
3.4 Hazardous Materials Handling	7
3.5 Public Education	8
3.6 Spill Response Planning	9
3.7 Groundwater Supply Contingency Planning	9
3.8 Monitoring	11
4. PROJECT FUNDING	12

LIST OF FIGURES

1. Framework for Wellhead Protection Project Approval

LIST OF TABLES

1. Existing and Proposed Groundwater Monitoring
2. Summary of Recommended Wellhead Protection Actions
3. Summary of Recommended Wellhead Protection Projects

LIST OF APPENDICES

- Appendix A Groundwater Management Plan Implementation

1. INTRODUCTION

This volume of the Lower Issaquah Valley Wellhead Protection Plan has been prepared to outline specific planning elements proposed or implemented as part of the Wellhead Protection effort in the Lower Issaquah Valley. Chapter 9 of the Wellhead Protection Plan Technical Report (Volume 1) outlined ten general Wellhead Protection strategies that are applicable to conditions in the Lower Issaquah Valley. In conjunction with other planning efforts, many of these general strategies have been incorporated in more specific planning documents or activities.

Although a specifically-titled Action Plan was not initially developed in the Draft Technical Report, it is clear that action is being taken with regards to protection of groundwater supplies in the Lower Issaquah Valley. This volume of the Wellhead Protection Plan is intended to document and clarify implementation items being pursued by jurisdictions in the Lower Issaquah Valley.

2. PLANNING CONSIDERATIONS

2.1 Recent Planning Efforts in Issaquah Area

City of Issaquah Comprehensive Plan

The Draft Comprehensive Plan for the City of Issaquah contains several policy references consistent with Wellhead Protection Planning. These include policies for protection of aquifer recharge, storm drain retrofitting, emergency response planning, water supply contingency planning, sustainable aquifer yield study, and wellhead protection implementation. Policy U2.10 specifically designates that the City will protect quality and quantity of water entering areas designated in the Draft Wellhead Protection Plan through the use of land-use regulation, public outreach and education, and capital facility construction projects.

Issaquah Basin Groundwater Management Plan

The Draft Issaquah Basin Groundwater Management Plan (July 1994), developed through Seattle King County Health Department (SKCHD), outlines a number of groundwater protection goals and issues and proposes implementation schedules and funding mechanisms for some of these items. Appendix A contains the summary implementation plan, organized by priority, proposed in the GWMP, for implementing management strategies. The GWMP proposes to develop an Aquifer Protection Fund to finance many of the projects. Others are proposed to be funded by specific agencies. High priority GWMP programs with proposed funding include:

- Public Education - \$320,000 annually is proposed for educational programs ranging from household hazardous wastes to xeriscaping;
- Data collection, analysis, and management - \$268,000 annually is proposed for continued data collection in the Issaquah Basin. Specific data collection points and frequencies are not indicated;
- Sole Source Aquifer Petition - \$27,000 for preparation of the petitions by SKHCD;
- Regulation Policies and ordinances - \$3,500 annually for WDOE policy and ordinance development;
- Surface water/groundwater program coordination - \$26,100 is proposed to coordinate planning efforts between King County surface water programs and groundwater. \$35,000 annually is proposed for coordination at the state level;
- Augment State UST Program - \$52,200 annually is proposed for SKCHD to enhance current UST inspections;

- Heating oil tanks. Approximately \$138,000 is proposed for various tank programs; and
- Implementation of Uniform Fire Code. \$32,000 is proposed for SKCHD implementation of the uniform fire code.

A variety of other programs are proposed, but funding is not specified.

King County Water Task Force for Grand Ridge

The proposed Grand Ridge development near Issaquah is a major land-use issue in the area and, based in part on the Draft Wellhead Protection Plan, has focused concern regarding surface water and groundwater quality and quantity in the Lower Issaquah Valley. A special task force was formed to discuss water issues and to propose strategies to minimize the potential for contamination or resource depletion as a result of the development. Stormwater infiltration was proposed as the most effective mitigative strategy to maintain aquifer recharge, and, with pre-treatment, minimize the risk of contamination. The eastern plateau areas were identified as a likely recharge source, but insufficient data prevented the area from being explicitly considered in the modeling used to delineate wellhead protection areas. Technical studies were performed to provide data to the task force, including excavation of test pits, drilling and installation of deep monitoring wells, and a site-specific water balance based on streamflow monitoring on Grand Ridge. Further groundwater and contaminant mass balance modeling was performed to evaluate possible impacts.

Summary

It is clear that implementation of the goals of wellhead protection and groundwater management are being actively pursued in the Lower Issaquah Valley by local jurisdictions. The result has been an increased public and agency awareness of groundwater in the LIV and an attempt to protect the groundwater resources of the area. In this respect, the implementation planning based on the Wellhead Protection program has occurred without the benefit of a specific implementation plan and has occurred through the general recommendations in the Technical Report. Therefore, the focus of the implementation plan is to provide more specific action items and procedures for enhancing and expanding wellhead protection efforts in the Lower Issaquah Valley. As noted above, a substantial effort has been proposed by SKCHD for the area, and the intent of the Wellhead Program is to compliment, not duplicate, programs proposed under the GWMP.

2.2 Wellhead Protection Project Approval Protocol

Virtually all of the responsibility for wellhead protection falls within the jurisdiction of the City of Issaquah, with notable exceptions being the Interstate-90 corridor (presently under Federal and Washington Department of Transportation jurisdiction) and the Lakeside Gravel pit and environs (presently under King County jurisdiction). In order to effectively develop

and manage on-going wellhead protection activities, a protocol for funding, scoping and managing of wellhead protection projects has been developed.

Figure 1 shows the proposed decision-making framework for funding, development and approval of specific wellhead protection projects. The intent of this structure is to provide a mechanism for carrying out wellhead protection projects within the established protocols of the City of Issaquah's project approval process. Both the Sammamish Plateau Water and Sewer District (SPWSD) and City of Issaquah (COI) have an equal interest in wellhead protection and, through an inter-local agreement, the SPWSD Board of Commissioners and Issaquah City Council will jointly set annual budgets for wellhead protection activities. These budgets can be augmented by contributions from County, State, or Federal programs for specific projects, but the majority of the ongoing management of groundwater in the LIV will be performed jointly by SPWSD and the City of Issaquah. Specific project scopes will be developed jointly by SPWSD and City of Issaquah staff through the Rivers and Streams Board, which includes citizen representation. The Rivers and Streams Board will serve as the Wellhead Protection Committee for the Lower Issaquah Valley. Representation in the Rivers and Streams Board also provides linkage to the groundwater advisory committee (GWAC) for the Issaquah Basin.

Once project scopes and budgets have been established by agency staff, the projects will be referred to the Issaquah Council Utilities Committee (CUC), which presently presides over similar water-related issues in the Issaquah Valley. In order to achieve sufficient representation, all WHP agenda items will be brought to the CUC in a separate meeting, attended by an SPWSD representative, and the Rivers and Streams Board. Action items will not leave committee until simple majority approval is reached.

The following sections describe policies and programs in effect or planned that are consistent with wellhead protection goals. The sections are organized according to headings in Volume 1 of the WHPP, describing general wellhead protection strategies.

3. WELLHEAD PROTECTION IMPLEMENTATION

3.1 Designation of Wellhead Protection Areas

Recognition of wellhead protection areas for the Lower Issaquah Valley aquifer have been developed on several levels by all principal jurisdictions/agencies, with the exception of the Washington Department of Transportation.

Policies in Effect

The City of Issaquah 1994 Draft Comprehensive Plan policy U2.1 specifies protection of aquifer recharge in designated recharge areas and wellhead protection areas through the use of land-use regulation, and mitigation. This is consistent with Wellhead Protection guidelines and conclusions of the technical report. These areas will be designated as critical areas when the implementation ordinances of the Comprehensive Plan are completed.

The City of Issaquah 1994 Draft Comprehensive Plan policy U2.7 specifies the goal of implementation of wellhead protection strategies outlined in the Wellhead Protection Plan.

The groundwater advisory committee (GWAC) for the Issaquah Basin have adopted goals in the draft groundwater management plan (GWMP) that:

- Designates the area as an Environmentally Sensitive Area;
- Eliminates categorical exemptions to SEPA, and provides guidance for SEPA reviews for addressing groundwater impacts;
- Places management priority on sensitive aquifer recharge areas; and
- Petitions for federal Sole-Source aquifer designation of the Issaquah Valley Aquifer.

Deficiencies

The Sammamish Plateau Water and Sewer District have not formally adopted a policy for wellhead protection.

Federal and state transportation agencies have not recognized the LIV aquifer as a sensitive aquifer.

Delineation of wellhead protection areas may change as more technical information becomes available.

3.3 Special Permitting

Policies in Effect

Permitting policies in effect in the LIV include the following:

- The City of Issaquah have adopted pre-emptive clauses in their commercial and industrial land-use designations that allow for the prohibition of businesses handling hazardous materials.
- King County has established a water task force for the Grand Ridge development comprised of representatives of the City of Issaquah, King County, SPWSD, and Grand Ridge Partnership.
- The City of Issaquah has adopted requirements for drainage plans for construction projects within City limits. These requirements include specifications for conveyance, ditching, wet ponds, and biofiltration in accordance with King County Surface Water Design Manual, and Biofiltration Swale Performance, Recommendations, and Design Considerations (WDOE Publication 657, October, 1992).
- The City of Issaquah requires stormwater detention and/or re-infiltration plans for new developments, in accordance with Stormwater Program Guidance Manual for Puget Sound Basin.

Action Items

SP-1 The City of Issaquah shall adopt requirements for drainage plans for existing and new highway projects that comply with the Puget Sound Highway Run-off Program (WAC 173-270) for existing and new highway projects, and shall advise WDOT and King County of intent to enforce these requirements.

3.4 Hazardous Materials Handling

Policies in Effect

Existing state and federal regulations controlling the use, storage and transport of hazardous materials are generally sufficient for protection groundwater resources in the LIV. The requirements, penalties, and justification for these regulations are well established and there is no basis for proposing substantial regulatory oversight and control at the local level, once a facility is sited.

The GWMP has various proposed programs for USTs and heating and tanks.

The City of Issaquah have adopted pre-emptive clauses in their commercial and industrial land-use designations that allow for the prohibition of businesses handling hazardous materials.

Action Items

HM-1 A geographic information system will be installed that is capable of maintaining a local database of groundwater and hazardous waste information for use by the City of Issaquah. The project would utilize the existing database developed for the WHPP as a starting point. Information in the database should be updated and revised on an annual basis.

3.5 Public Education

Policies in Effect

Public education regarding the LIV aquifer has been ongoing since the initiation of the Groundwater Management Plan in 1986. Since that time, the City of Issaquah and SPWSD have participated in major public events in Issaquah, such as Salmon Days. The City of Issaquah established an environmental educational center, the Eco-Center, located in downtown Issaquah. The facility sponsors a variety of environmental events. In August 1994, an educational program highlighting the Issaquah Valley aquifer was held for school-age children. Participants included King County Health, SPWSD, City of Issaquah, and WDOE. Programs such as these are expected to continue through the Eco-Center.

Action Items

- PE-1 The City of Issaquah shall formally designate the Eco-Center as the center for wellhead protection public education and involvement activities. Public education projects proposed for funding through Wellhead Protection will be implemented and coordinated through the Eco Center.
- PE-2 Publication of a small "WHP Educational Magazine" which summarizes and illustrates the key recommendations of the WHP and where people fit in.
- PE-3 Hold a workshop for local government staff and elected officials who will be involved in implementation of WHP via permit review, land use decisions, inspection and monitoring.
- PE-4 Direct mail to relevant local businesses a packet summarizing current regulations, requesting inventory, and providing information on chemical handling and spill response. Also include notices of special training available through other jurisdictions or agencies.

3.6 Spill Response Planning

Policies in Effect

A comprehensive but informal response procedure is presently applied to incidents on Interstate-90. The Washington State Patrol, Washington Department of Transportation, Washington Department of Ecology and Issaquah Fire Department (IFD) have established roles in dealing with accidents and spills of hazardous materials. The IFD and State Patrol are normally first responders to accidents, followed by Department of Transportation. If a hazardous spill is present, Ecology is notified who then direct a local clean-up contractor to mobilize equipment to the site for clean-up.

Deficiencies

The City of Issaquah need additional firefighter training in hazardous materials response.

Action Items

- SR-1 A Wellhead Protection project shall be developed for the training of City of Issaquah Fire Department personnel in Spill Response (as defined in WAC 296.62.300-3112).
- SR-2 A Wellhead Protection project shall be developed for purchasing spill containment materials (absorbent, lights, polyethylene, etc.) for use by IFD or Public Works.

3.7 Groundwater Supply Contingency Planning

Policies in Effect

Contingency planning and management of the LIV aquifer is presently focused on joint management of the aquifer and operation of the major production wells by the City of Issaquah and SPWSD. The SPWSD and City of Issaquah have constructed an inter-tie between the two water systems, which enables water from all wells in the LIV to be distributed to either the City of Issaquah or the Sammamish Plateau. Both hydraulically and geographically, the wells in the LIV are operated as a single wellfield. This is the primary operating contingency in the LIV and provides multiple redundancy in groundwater sources for the area.

SPWSD are pursuing a number of water supply contingencies, including:

- A request for increased withdrawals from the LIV production wells SP-7 and SP-8;
- A water rights application for a new production well in the LIV (Well 9);

- Evaluation of artificial recharge of the Sammamish Plateau Aquifer system, with the intent of reducing demand on the LIV aquifer during peak summer usage; and
- Evaluation of water re-use strategies and feasibility.

The City of Issaquah and SPWSD are jointly involved in a water resources task force formed as a result of the proposed Grand Ridge development. As a result of recommendations from this task force, additional exploration and evaluation of the Grand Ridge recharge area is being conducted.

The City of Issaquah Comprehensive Plan Policy U2.6 specifies that the City will pursue a combination of strategies to extend existing water supplies, including application for new permits, agreements with adjacent or regional purveyors, demand management, and new sources.

The City of Issaquah Comprehensive Plan Policy U2.8 specifies that the City will identify, protect and maintain the sustainable yield of the aquifer.

Deficiencies/Concerns

The sustainable yield of the aquifer over the long term and during summer dry periods is not known.

Action Items

- GC-1 A groundwater contingency and exploration program will be developed to continue exploration and monitoring of regional hydrogeologic conditions in the area.
- GC-2 The City of Issaquah will establish a policy providing for the collection of baseline exploration data in large developments in the LIV, prior to initiation of construction activities.
- GC-3 A groundwater supply project will be developed to determine the sustainable yield of the aquifer.
- GC-4 A groundwater supply project will be developed to identify and evaluate potential artificial aquifer recharge and recovery sites, in proximity to the City of Issaquah service area.

3.8 Monitoring

Policies in Effect

Monitoring of the LIV aquifer is summarized on Table 1.

Deficiencies

Additional monitoring of water-levels, water quality, and determination of aquifer boundaries is needed.

There remains uncertainty regarding fate and transport mechanisms for some organic contaminants in the LIV, particularly gasoline.

Action Items

MW-1 A program will be developed that provides for monitoring of groundwater quality and water-levels as summarized on Table 1.

MW-2 A technical study will be developed to evaluate the ability of the LIV aquifer to degrade and transform organic compounds, such as gasoline.

MW-3 Additional monitoring wells will be installed in the LIV as needed on an annual basis. Initially proposed locations are: 1.) adjacent to I-90 on the north side of the Front Street interchange; 2.) along Newport Way in the Issaquah Creek sub-basin.

MW-4 Stream flow measurements will be collected on the East Fork of Issaquah Creek to evaluate the interaction between the creek and the LIV aquifer.

4. PROJECT FUNDING

Funding Sources

Funding for wellhead protection activities will be developed through operating budgets and special grants as needed. Matching funds through state or county programs will be sought as appropriate. Taxes, rate increases, or user fees will not be pursued at this time. Baseline environmental assessment, including aquifer protection, will continue to be the financial responsibility for permittees under the City's SEPA process. This approach is being used for two major residential developments in Issaquah, and both are explicitly considering impacts to the aquifer and management of wellhead protection areas.

Project Costs

The estimated costs for projects recommended in the previous sections are summarized on Table 3. The projects are scheduled over a five-year period. These costs are preliminary and intended for budgeting only. Specific cost breakdowns and scopes of work will be developed by committee prior to final authorization.

TABLES

TABLE 1

EXISTING AND PROPOSED MONITORING - LOWER ISSAQUAH VALLEY AQUIFER

Station	Water Level	Water Quality ⁽¹⁾	Water Quality ⁽²⁾	Water Quality ⁽³⁾	Agency
EXISTING					
SPWSD-7	✓	✓			SPWSD
SPWSD-8	✓	✓			SPWSD
VT.1.1, 1.2, 1.3	✓				SPWSD
VT 5.1, 5.2	✓				SPWSD
VT 8.1, 8.2, 8.3	✓				SPWSD
COI-1	✓	✓			SPWSD
COI-2	✓	✓			SPWSD
COI-4	✓	✓			SPWSD
COI-5	✓	✓			SPWSD
PROPOSED ADDITIONS					
WHP-1	✓		✓		COI
WHP-2a	✓		✓		COI
WHP-2b	✓			✓	COI
WHP-3a	✓		✓		COI
WHP-3b	✓			✓	COI
VT 1.1	✓		✓		SPWSD
VT 1.3	✓			✓	SPWSD
VT 5.1	✓		✓		SPWSD
VT 5.2	✓			✓	SPWSD
VT 2.3	✓			✓	SPWSD
⁽¹⁾ EPA 524.1 Drinking Water, Priority Pollutant Metals, Conventional Parameters. ⁽²⁾ Organic Compound Screening (LNAPL), Priority Pollutant Metals, Conventional Parameters. ⁽³⁾ Volatile Organic Screening (DNAPL), Conventional Parameters.					

TABLE 2

SUMMARY OF RECOMMENDED WELLHEAD PROTECTION ACTIONS

Reference	Recommendation	City of Issaquah Action	SPWSD Action	King County Action
AM-1	Adopt wellhead protection policy.	no	yes	yes
AM-2	Coordinate with Washington Department of Transportation to formally recognize Interstate-90 as traversing an aquifer sensitive area.	yes	yes	yes
AM-3	Letter of local support for GWMP Goals SA-1A, 1B, 1D, 1E, and SA-3 recognizing groundwater impacts and recharge areas in King County's planning and management priorities.	yes	yes	no
AM-4	Petition for sole source aquifer designation.	yes	yes	yes
AM-5	Update WHPP every 5 years.	yes	yes	no
LZ-1	Request for King County to adopt pre-emptive clauses for land-use designations in aquifer sensitive areas the protect groundwater quality and quantity.	yes	yes	no
SP-1	Adopt requirements for drainage plans for new highway projects in accordance with the Puget Sound Highway Run-off Program (WAC 173-270).	yes	no	no
HM-1	Approve Project for installation and maintenance of a geographic information system for maintaining a local groundwater and contaminant database.	yes	yes	no
PE-1	Designate the Issaquah Eco-Center as a the coordinating local agency for wellhead protection public education and involvement activities.	yes	no	no
PE-2	Publish Wellhead Protection Educational Magazine.	yes	yes	no
PE-3	Workshop for local government staff.	yes	no	no
SR-1	Training of City of Issaquah Fire Department personnel in spill response.	yes	no	no
SR-2	Purchase of spill containment equipment and materials.	yes	yes	no
GC-1	Establish a groundwater contingency program for continued exploration and monitoring of hydrogeologic conditions.	yes	yes	no

TABLE 2 (Cont.)

SUMMARY OF RECOMMENDED WELLHEAD PROTECTION ACTIONS

Reference	Recommendation	City of Issaquah Action	SPWSD Action	King County Action
GC-2	Adopt a groundwater policy requiring collection of baseline groundwater and exploration data prior to construction of large developments.	yes	no	no
GC-3	Approve Project for evaluation of sustainable yield of the aquifer.	yes	yes	?
GC-4	Approve Project for feasibility study of artificial recharge and water re-use in the City of Issaquah service area.	yes	no	no
MW-1	Approve Project for continued monitoring of groundwater quality and water-levels.	yes	yes	no
MW-2	Approve Project for a study of the ability of the LIV aquifer to degrade and transform some organic compounds, such as gasoline.	yes	yes	?
MW-3	Approve Project for installation of new monitoring wells in the LIV.	yes	yes	no

SUMMARY OF PROPOSED WELLHEAD PROTECTION PROJECTS AND BUDGETS

Reference	Project	Total Budget	1995	1996	1997	1998	1999
HM-1	GIS System	\$ 80,000	\$ 50,000	\$ 20,000	\$ 10,000		
PE-1	Public Education Fund	\$ 50,000	\$ 10,000	\$ 10,000	\$ 10,000	\$ 10,000	\$ 10,000
SR-2	Fire Department Training	\$ 10,000	\$ 10,000				
SR-3	Spill COntainment Equipment	\$ 5,000	\$ 5,000				
GC-1	Groundwater Contingency Program	\$ 120,000		\$ 40,000	\$ 40,000	\$ 40,000	
GC-3	Aquifer Sustainability Study	\$ 250,000	\$200,000	\$ 50,000			
GC-4	Artificial Recharge Study	\$ 50,000		\$ 50,000			
MW-1	Groundwater Monitoring Program	\$ 100,000	\$ 20,000	\$ 20,000	\$ 20,000	\$ 20,000	\$ 20,000
MW-2	Organic Contaminant Study	\$ 50,000			\$ 50,000		
MW-3	Monitoring Wells	\$ 40,000	\$ 20,000	\$ 20,000			
MW-4	Stream Gages	\$ 20,000	\$ 20,000				
AM-5	Update WHPP	\$ 50,000					\$ 50,000
	Totals	\$ 825,000	\$335,000	\$ 210,000	\$ 130,000	\$ 70,000	\$ 80,000
	Contingency (15%)	\$ 123,750	\$ 50,250	\$ 31,500	\$ 19,500	\$ 10,500	\$ 12,000

FIGURES

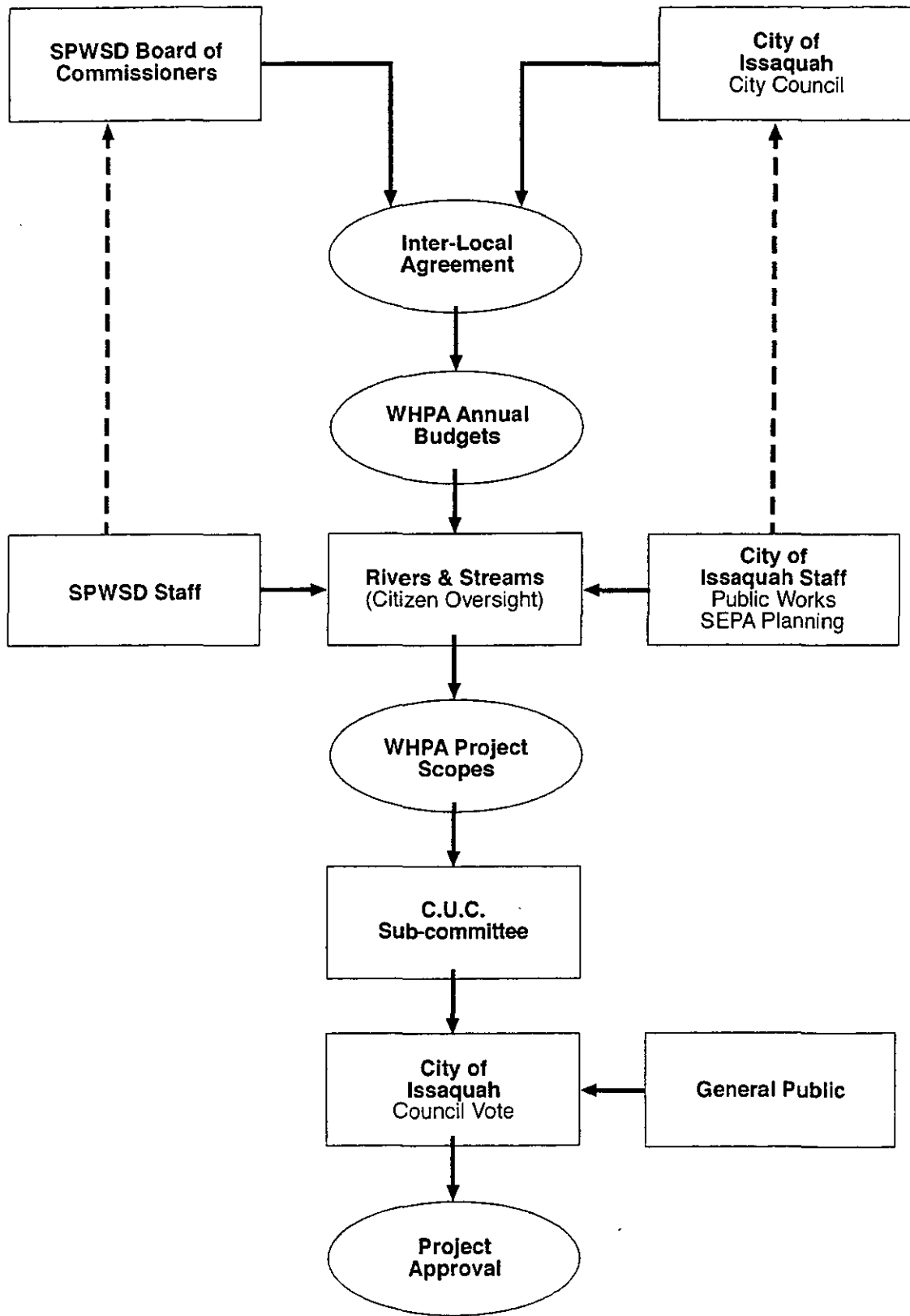


FIGURE 1
**WELLHEAD PROTECTION
 PROJECTS IMPLEMENTATION**
 SAMMAMISH/WELLHEAD/WA

APPENDIX A

Table 4.8.1. Implementation plan organized by priority.

GWAC Priority	Management Strategy	Agent	Costs			Funding Source		Year Action Accomplished
			Year 1	Year 2	Year 3	Aquifer Protection Fund	Other Source	
A1 Comprehensive Program	DCM 1. Data collection, analysis and management	Ecology	7,000	7,000	7,000		General Agency Funds	
A1 Comprehensive Program	DCM 1. Data collection, analysis and management	SKCHD	261,000	261,000	261,000	Aquifer Protection Fund		1 + ongoing
A1	Education Program Elements: OS - 3A Household hazardous wastes OS - 3B Household hazardous wastes PF - 3A: Education and proposed programs PF - 3B: Education and proposed programs ST - 3A Education. Review educational efforts ST - 3B Education. Report to the GWMP Management Committee ST - 3C Education. Develop supplemental educational program ST - 3D Education. Coordinate SW - 4: Education. UST - 3D Heating oil tanks: Education WC - 4 Education WQ - 5A Education. Xeriscaping WQ - 5B Education WQ - 5C Education	SKCHD GWAC King Conservation District	320,000	320,000	320,000	Aquifer Protection Fund		1, ongoing
A1 Regulation	PF - 2C: Pesticide and fertilizer use.	Issaquah				TBD	Aquifer Protection Fund	
A1 Regulation	PF - 2C: Pesticide and fertilizer use.	King County				16,000	Aquifer Protection Fund	

Table 4.8.1. Implementation plan organized by priority (continued).

GWAC Priority	Management Strategy	Agent	Costs			Funding Source		Year Action Accomplished
			Year 1	Year 2	Year 3	Aquifer Protection Fund	Other Source	
A1 Monitoring	PF - 1B: Pesticide and fertilizer - past use.	SKCHD			No additional, included in DCMP			
A1 Comprehensive Program	SA-3. Sole Source Aquifer Petition.	SKCHD	27,000			Aquifer Protection Fund		1
A1 Agreement	SG - 1. Land Use of Inactive or Reclaimed Mines	Issaquah			TBD		General Agency Funds	
A1 Agreement	SG - 2. Zoning Code - Reclamation Plans.	Issaquah	TBD				General Agency Funds	
A1 Agreement	SG - 2. Zoning Code - Reclamation Plans.	King County	500			Aquifer Protection Fund		
A1 Agreement	SG - 1. Land Use of Inactive or Reclaimed Mines.	King County			No additional cost			1
A1 Agreement	ST - 1A Runoff versus recharge.	Issaquah			To be determined		General Agency Funds	
A1 Agreement	ST - 1A Runoff versus recharge.	King County (SWM)		TBD			General Agency Funds	2
A1 Regulation	SW - 1B: Standards. Prepare amendments to Title 10	SKCHD			4,000		General Agency Funds	2
A1 Agreement	WQ - 7A Reservation.	GWAC in GWMP			No additional cost			1

Table 4.8.1. Implementation plan organized by priority (continued).

GWAC Priority	Management Strategy	Agent	Costs			Funding Source		Year Action Accomplished
			Year 1	Year 2	Year 3	Aquifer Protection Fund	Other Source	
A1.2 New Program	SA - 1E. Define ground water recharge areas.	King County	No initial cost, part of GWMP					
A1.2 New Program	SA - 1D. Enhanced environmental review to protect aquifers.	King County			52,200	Aquifer Protection Fund		2
A1.2 New Program	SA - 1A. Designation of environmentally sensitive areas.	King County			TBD	Aquifer Protection Fund		
A1.2 New Program	SA - 1C. Adoption of general aquifer protection policies.	King County		26,000		Aquifer Protection Fund		2
A1.2 New Program	SA - 1B. Elimination of categorical exemptions to SEPA.	King County		26,000		Aquifer Protection Fund		2
A1.2 New Program	ST - 5A Assessment of existing stormwater facilities.	Issaquah			TBD		General Agency Funds	
A1.2 Regulation	ST - 6A Roadway runoff.	King County (SWM)			TBD		General Agency Funds	2
A1.2 New Program	ST - 4C Coordination between surface and ground water planning efforts: King County.	King County			26,100		General Agency Funds	1
A1.2 New Program	ST - 5A Assessment of existing stormwater facilities.	King County			TBD		General Agency Funds	2
A2 Agreement	PF - 2A: Pesticide and fertilizer use.	Conservation Dist.			47,000	Aquifer Protection Funds	Special Assessment	

Table 4.8.1. Implementation plan organized by priority (continued).

GWAC Priority	Management Strategy	Agent	Costs			Funding Source		Year Action Accomplished
			Year 1	Year 2	Year 3	Aquifer Protection Fund	Other Source	
A2.2 Regulation	UST - 2A Exempt tanks.	Management Committee			TBD	Aquifer Protection Fund		
A2.2 Regulation	UST - 2B Exempt tanks.	SKCHD		8,000		Aquifer Protection Fund		2
A2.2 Regulation	UST - 2A Exempt tanks.	SKCHD		8,000		Aquifer Protection Fund		2
A2.2 Regulation	UST - 3A Heating oil tanks: Local legal authority.	SKCHD	16,000			Aquifer Protection Fund		1
A2.3 New Program	OS - 2A Commercial hazardous materials.	SKCHD (LHWMP)	TBD			Aquifer Protection Fund	LHWMP	
A2.3 Regulation	WQ - 4A Conservation.	Issaquah			TBD		General Agency Funds	3
A2.3 Regulation	WQ - 4A Conservation.	King County			TBD		General Agency Funds	1
A2.6 Regulation	WQ - 4B Conservation.	SKCHD			4000	Aquifer Protection Fund		1
A3 Regulation	SW - 1A: Standards. Ecology will determine whether existing regulations meet MFS.	Ecology		35,000	70,000		General Agency Funds	1
A3.1 New Program	HM - 5. Implementation of the Uniform Fire Code (UFC).	Issaquah Fire Dept.			TBD	Aquifer Protection Fund		3

Table 4.8.1. Implementation plan organized by priority (continued).

GWAC Priority	Management Strategy	Agent	Costs			Funding Source		Year Action Accomplished
			Year 1	Year 2	Year 3	Aquifer Protection Fund	Other Source	
A3.1 New Program	HM - 6. Implementation of the Emergency Planning and Community Right-to-Know Act (EPCRA).	Issaquah			TBD		General Agency Funds	
A3.1 New Program	HM - 5. Implementation of the Uniform Fire Code (UFC).	King County Fire Marshall			TBD		TBD	1, ongoing
A3.1 New Program	HM - 6. Implementation of the Emergency Planning and Community Right-to-Know Act (EPCRA).	King County Emergency Management			TBD		Aquifer Protection Fund or other as determined	1, ongoing
A3.1 New Program	HM - 7B Transportation-related hazardous material spills-Management Committee evaluation.	Management Committee			TBD		Aquifer Protection Fund	
A3.1 New Program	HM - 6. Implementation of the Emergency Planning and Community Right-to-Know Act (EPCRA).	Management Committee		TBD	TBD		TBD	
A3.1 New Program	HM - 7A. Transportation-related hazardous materials spills - Purveyor assessment.	Purveyors			TBD		General Agency Funds	3
A3.1 New Program	HM - 4. Hazardous waste contamination sites - site referral and public education.	SKCHD	52,200	52,200	52,200		Aquifer Protection Fund	on-going
A3.1 New Program	HM - 6. Implementation of the Emergency Planning and Community Right-to-Know Act (EPCRA).	SKCHD (Task 3,5)		24,000	8,000		Aquifer Protection Fund	
A3.1 New Program	HM - 7B Transportation-related hazardous material spills-Management Committee evaluation.	SKCHD			8,000		Aquifer Protection Fund	3
A3.1 New Program	HM - 5. Implementation of the Uniform Fire Code (UFC).	SKCHD	24,000	8,000			Aquifer Protection Fund	2,3

Table 4.8.1. Implementation plan organized by priority (continued).

GWAC Priority	Management Strategy	Agent	Costs			Funding Source		Year Action Accomplished
			Year 1	Year 2	Year 3	Aquifer Protection Fund	Other Source	
A3.1 Regulation	UST - 3C Heating oil tanks: Abandonment and maintenance.	SKCHD			8000		Aquifer Protection Fund	3
A3.1.1 New Program	UST - 1A Augment state UST Program. Petition for ESAs.	Issaquah			TBD		Aquifer Protection Fund	
A3.1.1 New Program	UST - 1A Augment state UST Program. Petition for ESAs.	King County		TBD			Aquifer Protection Fund	2
A3.1.1 New Program	UST - 1C Augment State UST Program. Prepare an ordinance.	SKCHD		8,000			Aquifer Protection Fund	2
A3.2 Research	PF - 2B: Pesticide and fertilizer use.	Management Committee			TBD		Aquifer Protection Fund	
A3.2 Research	ST - 7A Soil Amendment.	SKCHD (Management Committee)			26,100		Aquifer Protection Fund	3
A3.3 Regulation	OS - 2B Hazardous materials.	SKCHD			4000		Aquifer Protection Fund	
A3.3 Regulation	ST - 4A Coordination between surface and ground water planning efforts: Ecology Programs.	Ecology	35,000	35,000	35,000		General Agency Funds	1,2,3
A3.7 Regulation	WQ - 4C Conservation.	SKCHD			4000		Aquifer Protection Fund	1
A4.4 New Program	ST - 4B Coordination between surface and ground water planning efforts: Puget Sound Water Quality Authority.	PSWQA		No additional cost				1
A5 2 Regulation	HM - 3. Hazardous waste facilities zones-local designation.	Issaquah			TBD			

Table 4.8.1. Implementation plan organized by priority (continued).

GWAC Priority	Management Strategy	Agent	Costs			Funding Source		Year Action Accomplished
			Year 1	Year 2	Year 3	Aquifer Protection Fund	Other Source	
B2 Agreement	SP - 1B Sewer - Programs.	Sewer Utilities			TBD		General Agency Fund	
B2 Agreement	WC - 1A State program.	Ecology			70,000	Aquifer Protection Fund		3
B2 Agreement	WC - 1A State program.	Issaquah			TBD		General Agency Funds	
B2 Agreement	WC - 1A State program.	King County			TBD	Aquifer Protection Fund		
B2 Agreement	WC - 1A State program.	Sammamish Plateau			TBD		General Agency Funds	
B3 Regulation	SP - 2: Groundwater depletion- backfill.	SKCHD			200	Aquifer Protection Fund		3
B4 Research	C - 1 Information - studies:	SKCHD			Grant: 228,000 Literature research only: 4,000	Aquifer Protection Fund or	Centennial Clean Water Grant	
B5 New Program	BSE - 1: Regulatory program staffing.	SKCHD	78,000	78,000	78,000		Permit Fees	
B5 1 Research	SP - 1A Sewer - studies	SKCHD		50,000		Aquifer Protection Fund		3
Regulation	ST - 6A Roadway runoff.	Issaquah			TBD		General Agency Funds	

Table 4.8.2 Implementation plan organized by agency or government (continued).

GWAC Priority	Management Strategy	Agent	Cost			Funding Source		Year Action Accomplished
			Year 1	Year 2	Year 3	Aquifer Protection Fund	Other Source	
A3.3 Regulation	ST - 4A Coordination between surface and ground water planning efforts: Ecology Programs.	Ecology	35,000	35,000	35,000		General Agency Funds	1,2,3
B1 Regulation	BSE - 2: Guideline Revision.	Ecology		8,150	17,500		General Agency Funds	
B1 Regulation	WC - 2A Well identification.	Ecology		17,500	35,000		General Agency Funds	
B1.2 Research	WC - 3B Abandonment cost.	Ecology		3,500	7,000		General Agency Funds	3
B2 Agreement	WC - 1A State program.	Ecology			70,000		Aquifer Protection Fund	3
0 Support	WQ - 2B: Policies and ordinances.	GWAC in GWMP			No additional cost			1
A1 Agreement	WQ - 7A Reservation.	GWAC in GWMP			No additional cost			1
A1:2 New Program	HM - 1. State Hazardous Waste Plan-implementation.	GWAC in GWMP	400				Aquifer Protection Fund	1
0 Support	WQ - 1A Policies and ordinances.	Issaquah			No additional costs			

Table 4.8.2 Implementation plan organized by agency or government (continued).

GWAC Priority	Management Strategy	Agent	Cost			Funding Source		Year Action Accomplished
			Year 1	Year 2	Year 3	Aquifer Protection Fund	Other Source	
A1.1 Research	ST - 2C Ground water quality concerns - study.	Issaquah			TBD	Aquifer Protection Fund or	Centennial Grant Funds	
A1.1 Regulation	WQ - 1B: Policies and ordinances.	Issaquah			TBD		General Agency Funds	
A1.2 New Program	SA - 1A. Designation of environmentally sensitive areas.	Issaquah (Management Committee)	TBD				General Agency Funds	
A1.2 New Program	SA - 1B. Elimination of categorical exemptions to SEPA.	Issaquah (Management Committee)			TBD	Aquifer Protection Fund		
A1.2 New Program	SA - 1C. Adoption of general aquifer protection policies.	Issaquah	TBD				General Agency Funds	
A1.2 New Program	SA - 1D. Enhanced environmental review to protect aquifers.	Issaquah			TBD		General Agency Funds	
A1.2 New Program	SA - 1E. Define ground water recharge areas.	Issaquah (Management Committee)	No initial cost, part of GWMP					
A1.2 New Program	ST - 5A Assessment of existing stormwater facilities.	Issaquah			TBD		General Agency Fund	

Table 4.8.2 Implementation plan organized by agency or government (continued).

GWAC Priority	Management Strategy	Agent	Cost			Funding Source		Year Action Accomplished
			Year 1	Year 2	Year 3	Aquifer Protection Fund	Other Source	
A2 Agreement	PF - 2A: Pesticide and fertilizer use.	Issaquah			TBD		General Agency Funds	
A2 Agreement	WQ - 3A: Water rights.	Issaquah			TBD		General Agency Funds	
A2.3 Regulation	WQ - 4A Conservation.	Issaquah			TBD		General Agency Funds	3
A3.1 New Program	HM - 5. Implementation of the Uniform Fire Code (UFC).	Issaquah Fire Dept.			TBD		Aquifer Protection Fund	3
A3.1 New Program	HM - 6. Implementation of the Emergency Planning and Community Right-to-Know Act (EPCRA).	Issaquah			TBD		General Agency Funds	
A3.1.1 New Program	UST - 1A Augment state UST Program. Petition for ESAs.	Issaquah			TBD		Aquifer Protection Fund	
A5 2 Regulation	HM - 3. Hazardous waste facilities zones-local designation.	Issaquah			TBD			
B1 Regulation	WC - 2A Well identification.	Issaquah			TBD		General Agency Funds	
B1 Agreement	WC - 2B Well identification.	Issaquah			TBD		General Agency Funds	

Table 4.8.2 Implementation plan organized by agency or government (continued).

GWAC Priority	Management Strategy	Agent	Cost			Funding Source		Year Action Accomplished
			Year 1	Year 2	Year 3	Aquifer Protection Fund	Other Source	
B2 Agreement	SP - 1B Sewer - Programs.	Issaquah			TBD		General Agency Funds	
B2 Agreement	WC - 1A State program.	Issaquah			TBD		General Agency Funds	
Regulation	ST - 6A Roadway runoff.	Issaquah			TBD		General Agency Funds	
A2 Regulation	SW - 2: Waste screening.	King County Solid Waste			TBD		General Agency Funds	
0 Support	WQ - 1A Policies and ordinances.	King County			No additional costs			1
A1 Regulation	PF - 2C: Pesticide and fertilizer use.	King County			16,000		Aquifer Protection Fund	
A1 Agreement	SG - 1. Land Use of Inactive or Reclaimed Mines.	King County			No additional cost			1
A1 Agreement	SG - 2. Zoning Code - Reclamation Plans.	King County	500				Aquifer Protection Fund	
A1 Agreement	ST - 1A Runoff versus recharge.	King County (SWM)		TBD			General Agency Funds	2

Table 4.8.2 Implementation plan organized by agency or government (continued).

GWAC Priority	Management Strategy	Agent	Cost			Funding Source		Year Action Accomplished
			Year 1	Year 2	Year 3	Aquifer Protection Fund	Other Source	
A1.1 New Program	SA - 2. Develop minimum state wellhead protection requirements	King County (Management Committee)	TBD				Aquifer Protection Fund	
A1.1 Regulation	ST - 2A Ground water quality concerns - zoning.	King County			8,000		General Agency Funds	2
A1.1 Regulation	ST - 2B Ground water quality concerns - facility requirements.	King County			TBD		General Agency Funds	2
A1.1 Research	ST - 2C Ground water quality concerns - study.	King County			TBD		Aquifer Protection Fund or Centennial Grant Funds	3
A1.1 Research	ST - 2D Ground water quality concerns - facility monitoring.	King County			TBD		General Agency Funds	
A1.1 Regulation	WQ - 1B: Policies and ordinances.	King County			4000		General Agency Funds	
A1.2 New Program	SA - 1A. Designation of environmentally sensitive areas.	King County			TBD		Aquifer Protection Fund	
A1.2 New Program	SA - 1B. Elimination of categorical exemptions to SEPA.	King County		26,000			Aquifer Protection Fund	2

Table 4.8.2 Implementation plan organized by agency or government (continued).

GWAC Priority	Management Strategy	Agent	Cost			Funding Source		Year Action Accomplished
			Year 1	Year 2	Year 3	Aquifer Protection Fund	Other Source	
A1.2 New Program	SA - 1C. Adoption of general aquifer protection policies.	King County		26,000			Aquifer Protection Fund	2
A1.2 New Program	SA - 1D. Enhanced environmental review to protect aquifers.	King County			52,200		Aquifer Protection Fund	2
A1.2 New Program	SA - 1E. Define ground water recharge areas.	King County	No initial cost, part of GWMP					
A1.2 New Program	ST - 4C Coordination between surface and ground water planning efforts: King County.	King County			26,100		General Agency Funds	1
A1.2 New Program	ST - 5A Assessment of existing stormwater facilities.	King County			TBD		General Agency Funds	2
A1.2 Regulation	ST - 6A Roadway runoff.	King County (SWM)			TBD		General Agency Funds	2
A2 Agreement	PF - 2A: Pesticide and fertilizer use.	King County			TBD		Aquifer Protection Fund or Special Assessment	
A2 Other	SP - 1C: Leakproof piping.	King County	No addn'l funding required					1

Table 4.8.2 Implementation plan organized by agency or government (continued).

GWAC Priority	Management Strategy	Agent	Cost			Funding Source		Year Action Accomplished
			Year 1	Year 2	Year 3	Aquifer Protection Fund	Other Source	
A2 New Program	SW - 3 Abandoned sites.	King County Solid Waste			TBD		General Agency Funds	ongoing
A2 New Program	WC - 1B State program.	King County			26,000		Aquifer Protection Fund	
A2.3 Regulation	WQ - 4A Conservation.	King County			TBD		General Agency Funds	1
A3.1 New Program	HM - 5. Implementation of the Uniform Fire Code (UFC).	King County Fire Marshall			TBD		TBD	1, on-going
A3.1 New Program	HM - 6. Implementation of the Emergency Planning and Community Right-to-Know Act (EPCRA).	King County Emergency Management			TBD		Aquifer Protection Fund or other as determined	1, on-going
A3.1.1 New Program	UST - 1A Augment state UST Program. Petition for ESAs.	King County		TBD			Aquifer Protection Fund	2
A5 2 Regulation	HM - 3. Hazardous waste facilities zones-local designation.	King County			TBD			3
B1 Regulation	WC - 2A Well identification.	King County			8,000		Aquifer Protection Fund	3
B1 Agreement	WC - 2B Well identification.	King County			8,000		Aquifer Protection Fund	3

Table 4.8.2 Implementation plan organized by agency or government (continued).

GWAC Priority	Management Strategy	Agent	Cost			Funding Source		Year Action Accomplished
			Year 1	Year 2	Year 3	Aquifer Protection Fund	Other Source	
B2 Agreement	SP - 1B Sewer - Programs.	King County - Metro			TBD		General Agency Funds	3
B2 Agreement	WC - 1A State program.	King County			TBD		Aquifer Protection Fund	
A1 Comprehensive Program	WQ - 2A: Data Needs.	Management Committee			TBD (See DCMP)		Aquifer Protection Fund	1
A1.1 New Program	OS - 1A Nitrate Concerns.	Management Committee			TBD		Aquifer Protection Fund	
A2.1.3. New Program	UST - 1B Augment State UST Program. Enhance current inspection.	Management Committee	TBD				Aquifer Protection Fund	
A2.2 Regulation	UST - 2A Exempt tanks.	Management Committee				TBD	Aquifer Protection Fund	
A3.1 New Program	HM - 6. Implementation of the Emergency Planning and Community Right-to-Know Act (EPCRA).	Management Committee		TBD		TBD		TBD
A3.1 New Program	HM - 7B Transportation-related hazardous material spills-Management Committee evaluation.	Management Committee				TBD	Aquifer Protection Fund	
A3.2 Research	PF - 2B: Pesticide and fertilizer use.	Management Committee				TBD	Aquifer Protection Fund	

Table 4.8.2 Implementation plan organized by agency or government (continued).

GWAC Priority	Management Strategy	Agent	Cost			Funding Source		Year Action Accomplished
			Year 1	Year 2	Year 3	Aquifer Protection Fund	Other Source	
A4.4 New Program	ST - 4B Coordination between surface and ground water planning efforts: Puget Sound Water Quality Authority.	PSWQA	No additional cost					1
A2 Agreement	WQ - 3A: Water rights.	Purveyors			TBD		General Agency Funds	
A3.1 New Program	HM - 7A. Transportation-related hazardous materials spills - Purveyor assessment.	Purveyors			TBD		General Agency Funds	3
0 Support	WQ - 6A Artificial recharge.	Sammamish Plateau			TBD		General Agency Funds	
A2 Agreement	WQ - 3A: Water rights.	Sammamish Plateau			TBD		General Agency Funds	
B2 Agreement	WC - 1A State program.	Sammamish Plateau			TBD		General Agency Funds	
B2 Agreement	SP - 1B Sewer - Programs.	Sewer Utilities			TBD		General Agency Funds	
A1 Comprehensive Program	DCM 1. Data collection, analysis and management	SKCHD	261,000	261,000	261,000		Aquifer Protection Fund	1 + ongoing

Table 4.8.2 Implementation plan organized by agency or government (continued).

GWAC Priority	Management Strategy	Agent	Cost			Funding Source		Year Action Accomplished
			Year 1	Year 2	Year 3	Aquifer Protection Fund	Other Source	
A1 Monitoring	PF - 1B: Pesticide and fertilizer - past use.	SKCHD			No additional included in DCOMP			
A1 Comprehensive Program	SA-3. Sole-Source Aquifer Petition.	SKCHD	27,000			Aquifer Protection Fund		1
A1 Regulation	SW - 1B: Standards. Prepare amendments to Title 10	SKCHD			4,000		General Agency Funds	2
A1.1 Regulation	OS - 4A Operation and maintenance.	SKCHD			4,000	Aquifer Protection Fund		
A1.2 Regulation	OS - 2C Hazardous materials.	SKCHD			4,000	Aquifer Protection Fund		
A2 Policy	PF - 1A Pesticide and fertilizer - past use.	SKCHD			No additional included in Special Areas			
A2 Regulation	SW - 1C: Standards. Amend regulations.	SKCHD			4,000		General Agency Funds	

Table 4.8.2 Implementation plan organized by agency or government (continued).

GWAC Priority	Management Strategy	Agent	Cost			Funding Source		Year Action Accomplished
			Year 1	Year 2	Year 3	Aquifer Protection Fund	Other Source	
A2 Regulation	SW - 2: Waste screening.	SKCHD			2000	Aquifer Protection Fund		2
A2.1	Education Program Elements: OS - 3A Household hazardous wastes OS - 3B Household hazardous wastes PF - 3A: Education and proposed programs PF - 3B: Education and proposed programs ST - 3A Education. Review educational efforts ST - 3B Education. Report to the GWMP Management Committee ST - 3C Education. Develop supplemental educational program ST - 3D Education. Coordinate SW - 4: Education. UST - 3D Heating oil tanks: Education WC - 4 Education WQ - 5A Education. Xeriscaping WQ - 5B Education WQ - 5C Education	SKCHD GWAC King Conservation District	320,000	320,000	320,000 2,000	Aquifer Protection Fund		1, ongoing
A2.1.3 New Program	UST - 1B Augment State UST Program. Enhance current inspection.	SKCHD	52,200	52,200	52,200	Aquifer Protection Fund		ongoing
A2.2 New Program	OS - 4B Operation and maintenance.	SKCHD			52,200	Aquifer Protection Fund		3
A2.2 Regulation	UST - 2A Exempt tanks.	SKCHD		8,000		Aquifer Protection Fund		2

Table 4.8.2 Implementation plan organized by agency or government (continued).

GWAC Priority	Management Strategy	Agent	Cost			Funding Source		Year Action Accomplished
			Year 1	Year 2	Year 3	Aquifer Protection Fund	Other Source	
A2.2 Regulation	UST - 2B Exempt tanks.	SKCHD		8,000			Aquifer Protection Fund	2
A2.2 Regulation	UST - 3A Heating oil tanks: Local legal authority.	SKCHD	16,000				Aquifer Protection Fund	1
A2.3 New Program	OS - 2A Commercial Hazardous materials.	SKCHD (LHWMP)	TBD				Aquifer Protection Fund LHWMP	
A2.6 Regulation	WQ - 4B Conservation.	SKCHD			4000		Aquifer Protection Fund	1
A3.1 New Program	HM - 4. Hazardous waste contamination sites - site referral and public education.	SKCHD	52,200	52,200	52,200		Aquifer Protection Fund	ongoing
A3.1 New Program	HM - 5. Implementation of the Uniform Fire Code (UFC).	SKCHD	24,000	8,000			Aquifer Protection Fund	2,3
A3.1 New Program	HM - 6. Implementation of the Emergency Planning and Community Right-to-Know Act (EPCRA).	SKCHD (Task 3,5)		24,000	8,000		Aquifer Protection Fund	
A3.1 New Program	HM - 7B Transportation-related hazardous material spills-Management Committee evaluation.	SKCHD			8,000		Aquifer Protection Fund	3
A3.1 Regulation	UST - 3C Heating oil tanks: Abandonment and maintenance.	SKCHD			8000		Aquifer Protection Fund	3

Table 4.8.2 Implementation plan organized by agency or government (continued).

GWAC Priority	Management Strategy	Agent	Cost			Funding Source		Year Action Accomplished	
			Year 1	Year 2	Year 3	Aquifer Protection Fund	Other Source		
A3.1.1 New Program	UST - 1C Augment State UST Program. Prepare an ordinance	SKCHD		8,000			Aquifer Protection Fund		2
A3.2 Research	ST - 7A Soil Amendment.	SKCHD (Management Committee)				26,100	Aquifer Protection Fund		3
A3.3 Regulation	OS - 2B Hazardous materials.	SKCHD				4000	Aquifer Protection Fund		
A3.7 Regulation	WQ - 4C Conservation.	SKCHD				4000	Aquifer Protection Fund		1
B1.1 Research	WC - 3A Abandonment cost.	SKCHD				13,050	Aquifer Protection Fund		3
B3 Regulation	SP - 2: Groundwater depletion-backfill.	SKCHD				200	Aquifer Protection Fund		3
B4 Research	C - 1 Information - studies:	SKCHD				Grant: 228,000 Literature research only: 4,000	Aquifer Protection Fund or Centennial Clean Water Grant		
B5 New Program	SE - 1: Regulatory program staffing.	SKCHD	78,000	78,000		78,000		Permit Fees	

Table 4.8.2 Implementation plan organized by agency or government (continued).

GWAC Priority	Management Strategy	Agent	Cost			Funding Source		Year Action Accomplished
			Year 1	Year 2	Year 3	Aquifer Protection Fund	Other Source	
B5 1 Research	SP - IA Sewer - Studies	SKCHD		50,000			Aquifer Protection Fund	3