

## Appendix C. Public Involvement and Comment Period Documentation

This appendix includes documents that show Ecology’s public comment process for this plan. Documents include Ecology’s web page text, blogs, messages to list servers (listservs), email messages, legal notice and media coverage.

Ecology’s Outdoor Dust Management webpage content from November 5, 2018.

<https://ecology.wa.gov/Air-Climate/Air-quality/Air-quality-targets/Outdoor-dust-management>

### Outdoor dust management

We monitor the air for dust in some areas of Washington. Monitors track air quality to measure whether areas meet [national ambient air quality standards](#) (NAAQS), which are set by EPA. Our atmospheric scientists also monitor weather conditions to identify potential dangerous and unhealthy dust storms. By doing this, we can provide advance warning to those in affected areas.

Health effects	Where they occur	Dust monitoring	Reports & public comments
<p>Dust is composed of larger and smaller particles suspended in the air. While larger particles may sting and irritate your eyes, smaller particles are of most concern to people's health because they can lodge deep into your lungs and harm your health.</p> <p>The dust storm mixture is made up of large and tiny particles, known as <a href="#">particulate matter</a>. The smallest particles, known as PM<sub>10</sub> and PM<sub>2.5</sub>, are too small to be filtered out by your nose and your body's other natural defense systems. This fine dust is inhaled deep into your lungs where it can cause increased problems with:</p> <ul style="list-style-type: none"><li>• Lung irritation.</li><li>• Emphysema.</li><li>• Asthma.</li><li>• Bronchitis.</li><li>• Heart disease.</li><li>• Allergic reactions.</li></ul> <p>Breathing too much dust is especially harmful to:</p> <ul style="list-style-type: none"><li>• Infants, children, teens, the elderly, and pregnant women.</li><li>• People with asthma, bronchitis, emphysema, or other respiratory conditions.</li><li>• People with heart disease.</li><li>• Healthy adults working or exercising outdoors.</li></ul>			

## What you can do

The best thing to do when a dust storm is coming is to be prepared. It is a good idea to:

- Spend as little time outside as possible.
- Avoid hard exercise.
- Wear some type of covering over your nose and mouth.
- When driving, be alert for sudden changes in visibility and pull over if you have trouble seeing.
- Close your windows, vents, and doors.
- Wear a mask outdoors.
- Ask your doctor for advice.

## Get dust storm alerts

You can also [sign up](#) to receive Wireless Emergency Alerts about high wind warnings from the [National Weather Service](#). The best thing to do is always be prepared.

Health effects

Where they occur

Dust monitoring

Reports & public  
comments

Most dust storms are short in duration, and happen in the summer and fall. A combination of high winds, dry weather, and uncovered fields all contribute to dust storms. A few dust storms per year happen in Central and Eastern Washington. Your local news may provide advance warnings when conditions are ripe for a dust storm.

## Preventing dust storms

There are some things that can be done to prevent windblown dust; but even best efforts can be overwhelmed by drought and high winds.

Farmers and construction industries can:

- Use less intensive tilling methods.
- Plant cover crops.
- Work in phases to not expose land.
- Use dust suppressants, such as water or gravel.

Contact your local clean air agency or city or county planning department if there is a dust problem in your area.



- Home
- Air & Climate
- Water & Shorelines
- Waste & Toxics
- Spills & Cleanup

Air & Climate > Air quality > Air quality targets > Outdoor dust management

### Air quality

Smoke & fire

Vehicle emissions

Business & industry requirements

Air quality targets

Air emissions inventory

Air quality standards

Outdoor dust management

Regional haze

Data centers

## Outdoor dust management

We monitor the air for dust in some areas of Washington. Monitors track air quality to measure whether areas meet [national ambient air quality standards](#) (NAAQS), which are set by EPA. Our atmospheric scientists also monitor weather conditions to identify potential dangerous and unhealthy dust storms. By doing this, we can provide advance warning to people in affected areas.

Ecology has a [plan to reduce dust during high winds in the Wallula area](#).

- Public comment period: Nov. 5, 2018 – Dec. 12, 2018
- [Submit your comments online](#).



Reducing dust storms in Eastern Washington



Watch later



Share



RECEIVED

NOV 15 2018

**LEGAL PROOF OF PUBLICATION**

Account #	Ad Number	Identification	PO	Amount	Cols	Lines
449227	0003932804	High Wind Fugitive Dust Mitigation plan		\$154.56	1	84

Department of Ecology  
Eastern Washington Office

**Attention:** Melanie Forster

WA ST DEPT OF ECOLOGY/AIR QUALITY PROGRAM  
4601 N MONROE ST  
SPOKANE, WA 99205

**Notice of Opportunity to Comment**  
The Department of Ecology (Ecology) invites the public to comment on a proposed High Wind Fugitive Dust Mitigation plan. This plan was developed to minimize dust generation from agricultural sources near and southwest of Kennewick to mitigate the impact to residents. Dust storms impact much of Eastern Washington. Agricultural activities have the potential to create dust. High wind events can overwhelm existing erosion control measures on agricultural lands and cause coarse particulate matter levels (PM10) to exceed the 24-hour PM10 National Ambient Air Quality Standard (NAAQS). U.S. Environmental Protection Agency finalized the revised Exceptional Event Rule on October 3, 2016. An exceptional event is a natural or human-caused event that affects air quality and is not reasonably controllable or preventable. The rule provides a process to exclude data when the standards are exceeded due to natural events beyond the ability to control, if the events meet all the criteria in the rule. To qualify an event for exclusion, Washington must document control of emissions generated by human activities, like agriculture. Most farmers use USDA conservation measures to minimize soil erosion. Washington submitted Exceptional Events Demonstrations for four high wind events that caused PM10 exceedances at the Kennewick monitor from 2013 through 2015. The exceedances recorded at the Kennewick monitor triggered the requirement to develop a mitigation plan for the nearby Wallula PM10 Maintenance Area, since the monitor values at Kennewick determine compliance with the NAAQS for this area. Ecology invites the public to review and comment on the proposed mitigation plan from November 5 through December 12, 2018.  
To comment:  
• Submit online: <http://ec.ecology.com/mentinput.com/?id=peZMA>  
• Or mail to:  
Laurie Hulse-Moyer  
Department of Ecology  
PO Box 47600  
Olympia, WA 98504-7600  
Find the proposed mitigation plan at:  
[https://ecology.wa.gov/Air/Climate/Air-quality/Air-quality-targets/Outdoor-dust-management/#3932804\\_11/05/2018](https://ecology.wa.gov/Air/Climate/Air-quality/Air-quality-targets/Outdoor-dust-management/#3932804_11/05/2018)

**AFFIDAVIT OF PUBLICATION**

COUNTY OF BENTON) .SS  
STATE OF WASHINGTON)

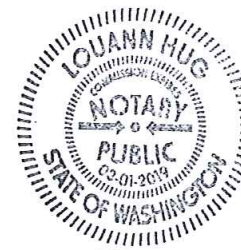
Chera Cortez, being duly sworn, deposes and says, I am the Legals Clerk of The Tri-City Herald, a daily newspaper. That said newspaper is a local newspaper and has been approved as a legal newspaper by order of the superior court in the county in which it is published and it is now and has been for more than six months prior to the date of the publications hereinafter referred to, published continually as a daily newspaper in Benton County, Washington. That the attached is a true copy as it was printed in the regular and entire issue of the Tri-City Herald and not in a supplement thereof, ran 1 time(s) commencing on 11/05/2018, and ending on 11/05/2018, and that said newspaper was regularly distributed to its subscribers during all of this period.

*Chera Cortez*  
(Signature of Legals Clerk)

SUBSCRIBED AND SWORN BEFORE ME  
THIS 6th DAY OF November, 2018

*Louann Hug*  
Notary Public in and for the State of Washington  
residing in Benton County

COMMISSION EXPIRES: 3/1/2019



**From:** Ecology's Air Quality Rule and State Implementation Plan Updates <ECY-AQ-RULE-AND-SIP-UPDATES@LISTSERV.ECOLOGY.WA.GOV> on behalf of ECY RE AQComments <AQComments@ECY.WA.GOV>  
**Sent:** Monday, November 05, 2018 12:02 PM  
**To:** ECY-AQ-RULE-AND-SIP-UPDATES@LISTSERV.ECOLOGY.WA.GOV  
**Subject:** Washington SIP Notice: Public Comment Period Open through Dec. 12, 2018 - High Wind Fugitive Dust Mitigation Plan

Ecology invites you to comment on the new High Wind Fugitive Dust Mitigation Plan for the Wallula PM<sub>10</sub> Maintenance Area.

EPA revised the [Exceptional Events Rule](#) on October 3, 2016. An exceptional event is a natural or human-caused event that affects air quality and is not reasonably controllable or preventable.

High wind events overwhelmed controls on agricultural lands and caused the coarse particle pollution (PM<sub>10</sub>) standard to be exceeded at the Kennewick monitor more than three times from 2013 to 2015. This monitor stands in for the Wallula PM<sub>10</sub> Maintenance Area, an area that formerly violated the standard. The Exceptional Events Rule requires us to develop a new plan to reduce coarse particle pollution for areas near and around Kennewick.

The High Wind Fugitive Dust Plan for the Wallula areas identifies existing sources and controls of dust. The plan also includes new plans to encourage farmers to use additional measures to reduce soil erosion. Ecology will be bringing together a High Wind Dust Prevention Workgroup that will include local conservation districts and USDA offices.


Review and comment on the proposed plan by **December 12:**

- Access the plan: [Outdoor dust management](#)
- [More information on plans for maintaining air quality](#)

**Provide comment:**

- [Submit online](#)
- By mail to:  
Laurie Hulse-Moyer  
Department of Ecology  
P.O. Box 47600  
Olympia, WA 98504-7600

**Questions?**

Laurie Hulse-Moyer  
[laurie.hulse-moyer@ecy.wa.gov](mailto:laurie.hulse-moyer@ecy.wa.gov)  
(360) 407-6783 



Visit us on the [web](#) and follow our [news and social media](#).

[Subscribe](#) or [Unsubscribe](#)

Washington SIP Notice Public Comment Period Open through Dec. 12 2018 - High Wind Fugitive Dust Mitigation Plan.htm[3/10/2019 9:15:19 PM]



## Menu

[< Events listing homepage](#)



COMMENT PERIOD

# High Wind Dust Mitigation Plan for Wallula Area

## Maintenance State Implementation Plan

November 5, 2018 - December 12, 2018

Ecology has a [plan to reduce dust during high winds in the Wallula area](#). [↗](#) The plan:

- Identifies existing sources and controls of dust.
- Includes new plans to encourage farmers to use additional measures to reduce soil erosion.

### Background

We monitor the air for dust in some areas of Washington. Monitors track air quality to

Top

<https://ecology.wa.gov/Events/AQ/State-implementation-plans/Dust-Mitigation-Plan,-Wallula,-12-12-18>[11/7/2018 4:56:17 PM]

measure whether areas meet [national ambient air quality standards](#) (NAAQS), which are set by EPA.

Between 2013 and 2015, air pollution from coarse particles (PM<sub>10</sub>) in dust caused the Kennewick monitor to go above the national air quality standard three times. This monitor stands in for the Wallula PM<sub>10</sub> maintenance area, an area that previously didn't meet the standard. The exceptional events rule requires us to develop a new plan to reduce coarse particle pollution for areas near and around Kennewick.



## Comment online

- Use our [online comment form](#) 






## Comment by mail

Laurie Hulse-Moyer  
Washington Dept. of Ecology  
Air Quality Program  
P.O. Box 47600  
Olympia, WA 98504-7600



## Questions

**Laurie Hulse-Moyer**  
Environmental Planner  
[laurie.hulse-moyer@ecy.wa.gov](mailto:laurie.hulse-moyer@ecy.wa.gov)  
360-407-6783 

To request ADA accommodation, call Ecology at 360-407-6831 , 711 (relay service), or 877-833-6341  (TTY). More about our [accessibility services](#).



**Website feedback: tell us how we're doing.**

[About us](#)  
[Contact us](#)  
[Our programs](#)  
[Environmental review \(SEPA\)](#)  
[Budget & planning](#)  
[News](#)  
[Jobs](#)  
[Online payments \(EcoEPay\) !\[\]\(d263118e0bfd47dc6bc704167d936b83\_img.jpg\)](#)  
[Well reports !\[\]\(214f5087da16087c75c54373aedbd8f7\_img.jpg\)](#)  
[Environmental monitoring \(EIM\)](#)  
[Recycle services lookup !\[\]\(945ef95434326a3bda2dadbc534d9d56\_img.jpg\)](#)  
[Water quality permits \(PARIS\) !\[\]\(bb5ef5ccc4a5f7f581366a28f8ff1e5a\_img.jpg\)](#)  
[Report an environmental issue](#)  
[Online tools](#)  
[Publications & forms](#)  
[Public input & events listing](#)  
[Grants & loans](#)  
[Laws, rules, & rulemaking](#)  
[Public records disclosure](#)  
[Contracts & bids](#)  
[I want to... topics](#)  
[Accessibility](#)  
[中文 | Chinese](#)  
[Tiếng Việt | Vietnamese](#)  
[한국어 | Korean](#)  
[Español | Spanish](#)  
  
[Staff resources](#)

<https://ecology.wa.gov/Events/AQ/State-implementation-plans/Dust-Mitigation-Plan,-Wallula,-12-12-18>[11/7/2018 4:56:17 PM]



Copyright © Washington State Department of Ecology

[Privacy Notice](#)

[Site Info](#)

[Contact the web team](#)



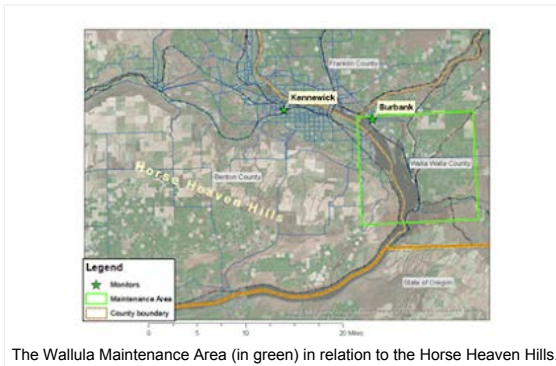
Monday, November 5, 2018

## Reining in dust in the Horse Heaven Hills

It's no secret that Eastern Washington can get windy. Very windy, at times.

And that's not a problem... until that wind picks up loose soil and sends it aloft. Then you've got a dust storm, and that can lead to some real health concerns. Dust contains tiny particles that can lodge deep in people's lungs. Much of this dust is truly minuscule – the particulates known as PM10 are about one-seventh the diameter of a human hair.

In Eastern Washington, agriculture is the main source of dust. Farmers have made great strides in the last few decades in reducing dust, but there is still a need for improvement. That's why Ecology created a [High Wind Fugitive Dust Mitigation Plan](#) for the Tri-Cities area. Part of the plan is to work with partners to encourage farmers to adopt additional voluntary practices that disturb the soil less and reduce the number of these high wind dust events.



The Wallula Maintenance Area (in green) in relation to the Horse Heaven Hills.

### What's happening

Most dust storms hitting the Tri-Cities start out in farmlands southwest of Kennewick. The Horse Heaven Hills are home to many dryland wheat farms and the area is the main source of dust for these high wind events.

Several times in recent years, high winds have whipped up major dust storms in the area, and Ecology's air quality monitor in Kennewick picked up PM10 readings that exceeded federal standards. For example, on Aug. 14, 2015, wind speeds hit a maximum of 56 miles per hour and our monitor recorded a 24-hour average reading of 589 micrograms per cubic meter – far above the 150 microgram per cubic meter 24-hour standard.

### What we are doing

<https://ecology.wa.gov>

#### About us

At Ecology, we're proud to help protect Washington's environment and quality of life. We strive to promote the wise management of our air, land and water for the benefit of current and future generations.

#### Follow by Email

#### More stories

More stories

#### Keep up with us



We've drafted a plan and will put together a High Wind Dust Prevention Work Group with Ecology, Benton County Clean Air Agency, conservation districts, USDA offices and other partners. This work group help to educate farmers and the general public about the need to minimize dust during high wind events, promote conservation measures to minimize soil erosion and explore other steps to reduce soil erosion. We'll work to better notify the public about high wind dust events, and work with the Washington State Department of Health to improve public education on the health threats from dust.



A prototype deep-furrow conservation drill helps to prevent soil erosion.



[Read our News Releases](#)

Ecology is also investing \$163,000 with the Benton Conservation District to incentivize farmers to use no-till or erosion mitigation methods on their fields.

**What's the story?**

The backstory is somewhat complicated. Creating the plan is a federal requirement stemming from long-ago air quality problems in the Wallula Maintenance Area – a region around the town of Burbank where, back in the 1980s, dust control issues led to a federal “non-attainment” designation for PM10. Although dust control in the Wallula area is now much-improved, there are ongoing federal requirements to prevent air quality from backsliding. Since the Kennewick monitor stands in for the Wallula Maintenance Area, high readings there triggered the need for a plan.

The important thing is that the regulatory requirements that led to the new plan will bring us together with our partners to take further steps to better control the dust. And that should be better for everyone in the region.

**Comment on the plan**

Before we get to work, however, we're asking the public to weigh in on the High Wind Fugitive Dust Mitigation Plan between Nov. 5 and Dec. 12. Find the plan on our [Outdoor Dust Management](#) page.

For more information, contact Laurie Hulse-Moyer, [laurie.hulse-moyer@ecy.wa.gov](mailto:laurie.hulse-moyer@ecy.wa.gov).

**By Andy Wineke, Air Quality program**

Posted by [WA Department of Ecology](#) at 3:29 PM

**No comments:**

[Post a Comment](#)

[Newer Post](#)

[Home](#)

[Older Post](#)

Subscribe to: [Post Comments \(Atom\)](#)

**From:** [Hulse-Moyer, Laurie \(ECY\)](#)  
**To:** [Hulse-Moyer, Laurie \(ECY\)](#)  
**Cc:** [Melanie Forster \(ECY\) \(mfor461@ECY.WA.GOV\)](#)  
**Bcc:**

**Subject:** Ecology comment period starts November 5. Opportunity to comment on high wind dust plan for Wallula and Kennewick.  
**Date:** Monday, November 05, 2018 5:53:00 PM

---

Greetings:

*You are receiving this email because you may have previously expressed interest in dust events that caused exceedances of national ambient air quality standards for particulate matter in and around Kennewick. If not interested, delete.*

Ecology invites you to comment on the new [High Wind Fugitive Dust Mitigation Plan](#) for the Wallula PM<sub>10</sub> Maintenance Area and areas near and around Kennewick. (See our [blog](#))

This new plan outlines the existing sources and controls and includes some new actions to encourage farmers to adopt additional voluntary practices that disturb the soil less for areas near and around Kennewick, including the Wallula Maintenance Area. We plan to convene a High Wind Dust Prevention Workgroup, initially to include local conservation districts, USDA offices and us. High wind events overwhelmed controls on agricultural lands and caused the coarse particle pollution (PM<sub>10</sub>) standard to be exceeded at the Kennewick monitor more than three times from 2013 to 2015. An exceptional event is a natural or human-caused event that affects air quality and meets certain other requirements. The revised Exceptional Event Rule (10/2016) requires states with areas with repeat exceedances to submit a mitigation plan.

Since the Kennewick monitor stands in for the Wallula Maintenance Area, an area that formerly violated the standard, we are required to develop a plan to reduce dust near and around these areas. Access the report at Ecology's [Outdoor Dust Management](#) page. Review and comment on the proposed mitigation plan through **December 12, 2018**.

**To comment:**

- Submit online: <http://ac.ecology.commentinput.com/?id=peZMA>
- By mail to:

Laurie Hulse-Moyer  
Department of Ecology PO  
Box 47600  
Olympia, WA 98504-7600

If you have any questions, contact me at 360-407-6783. Thank you.

---

Laurie Hulse-Moyer / Air Quality Planner / WA State Department of Ecology / [lahu461@ecy.wa.gov](mailto:lahu461@ecy.wa.gov) / (360) 407-6783



# Comments sought on proposed Wallula dust mitigation plan

Nov 8, 2018

The public can comment now through Dec. 12 on a proposed plan to tamp down dust storms in the Wallula area.

The state Department of Ecology’s High Wind Fugitive Dust Mitigation Plan outlines new actions to encourage farmers to adopt practices that disturb the soil less in the area south and east of Kennewick and Burbank.



In a release, Ecology officials say the measures are needed due to dust storms that have overwhelmed existing erosion-control measures and caused particulate-matter levels to exceed national standards.

The proposed plan is available online at Ecology’s outdoor dust management page at <http://ecology.wa.gov/Air-Climate/Air-quality/Air-quality-targets/Outdoor-dust-management>

[http://www.union-bulletin.com/...nts-sought-on-proposed-wallula-dust-mitigation-plan/article\\_f1fd34e0-e387-11e8-8430-772b5b31cd59.html](http://www.union-bulletin.com/...nts-sought-on-proposed-wallula-dust-mitigation-plan/article_f1fd34e0-e387-11e8-8430-772b5b31cd59.html)[2/14/2019 3:06:53 PM]

**What's your home worth?**

**CLICK NOW**

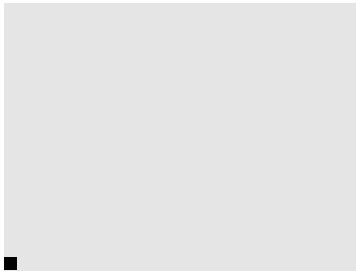
**FREE MARKET ANALYSIS**

**Susan Akers**  
Broker/Realtor  
(509) 520-3885  
WallaWallaForSale.com

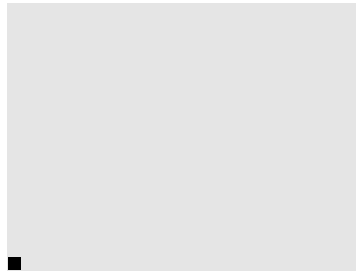
**COLDWELL BANKER**  
First Realtors®

## More from this section

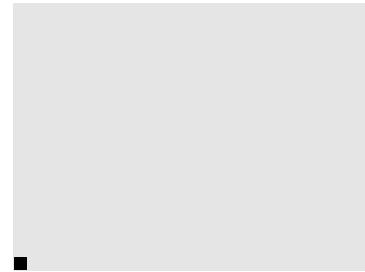
---



Trump: GOP going against 'a radical left'



NY: NYPD COPS SHOT BY FRIENDLY FIRE, 1 DETECTIVE DEAD



Howard Schultz: Green New Deal not realistic, immoral

[bit.ly/2zwhEmW](http://bit.ly/2zwhEmW). Comments can be submitted by clicking the link on the page or by mail to Laurie Hulse-Moyer, Department of Ecology, PO Box 47600, Olympia, WA 98504-7600.



## Recommended for you

---



SUBSCRIPTION SERVICES



HELP



ADVERTISE

## Send a Letter to the Editor

---

The Union-Bulletin strives to publish every letter we receive. To send a letter, click the button below.

## Featured Events

---

### Curtis Salgado at The Dacres LIVE with opener Diego Romero

Friday, February 15th, 2019 @ 6:00 pm – 10:00 pm

The Dacres

Award-winning soul, blues and R&B vocalist Curtis Salgado's earth-shaking vocals and for... [Read more](#)

---

### Shop Sip & Stroll

Saturday, February 16th, 2019 @ 1:00 pm – 4:00 pm

Downtown Walla Walla

The Downtown Walla Walla Foundation presents a special SHOP SIP & STROLL downtown on Sat... [Read more](#)

---

[Click here to post or promote your event](#)

---



**From:** [Wineke, Andrew \(ECY\)](#)  
**To:** [Hulse-Moyer, Laurie \(ECY\)](#); [Alberich, Jason \(ECY\)](#); [Pritchett, Nancy \(ECY\)](#)  
**Subject:** Tri-City Herald: Tired of all the dust in the Tri-Cities? The state has a plan for better air  
**Date:** Monday, November 26, 2018 9:26:47 AM

---

<https://www.tri-cityherald.com/news/local/article222032750.html>

## Tired of all the dust in the Tri-Cities? The state has a plan for better air

BY ANNETTE CARY

[acary@tricityherald.com](mailto:acary@tricityherald.com)

November 22, 2018 02:12 PM

Updated November 22, 2018 02:12 PM

KENNEWICK, WA

You don't have to live in the Tri-Cities long to know that dust is a problem.

The area is blessed with few rainy days in the summer and fall. But, oh, does the wind blow, picking up the very fine, dry soil of the region.

A new draft report by the Washington state Department of Ecology says much of the dust that fouls the Tri-City air comes from farmland in the Horse Heaven Hills southwest of residential areas.

Farmland to the northeast of the Tri-Cities also contributes, when the wind blows from that direction.

You can expect to hear more about dust in the next few years as Ecology finalizes and puts into practice a new plan to reduce wind-blown dust.

A draft of the plan calls for a better way to warn people when dust storms are looming. Additionally, Ecology will invest \$163,000 with the Benton Conservation District to help farmers use no-till or other erosion mitigation methods in their fields.

Dust storms are not as frequent as they once were.

In the early 1990s, the Tri-Cities had as many as seven severe dust storms in a year, according to Ecology.

But in the six years from 2011 to '17, that dropped to seven severe dust storms total.

One was [on Aug. 14, 2015](#), when wind speeds hit a maximum of 56 mph as the

Tri-Cities was in the midst [of a drought](#).

Ecology's air monitor in Kennewick recorded a 24-hour average reading of 589 micrograms per cubic meter of small pollutants, according to ECOconnect, an Ecology blog. That's far above the standard of 150 set by the Environmental Protection Agency.

Because of the region's history — too many days out of compliance with federal standards for air quality due to dust — the area is required to have a plan to prevent backsliding.

Not only does dust turn the sky a murky brown, reduce visibility for drivers and make dusting furniture a too-frequent chore, it's a health hazard that concerns EPA.

Some of the Tri-Cities dust is too fine to be filtered out by the human nose and can be breathed deep into the lungs to cause structural and chemical changes, according to the Department of Ecology.

It can worsen asthma and heart disease, and is particularly dangerous for small children and the elderly.

Ecology's draft High Wind Fugitive Dust Mitigation Plan calls for putting together a working group that includes the Benton Clean Air Agency, the Benton Conservation District and the U.S. Department of Agriculture.

It will coordinate with the Washington state Department of Health to improve public notification on dust storms and to provide more education on the hazards of dust.

It also will be encouraging farmers to use additional measures to reduce soil erosion.

The Benton Conservation District already has worked with wheat farmers — wheat fields are a major source of wind blown dust — to test a harvest method that strips grains from wheat heads but leaves stalks standing up to 10 inches tall.

The taller stubble helps reduce wind-blown dust.

The Franklin Conservation District has partnered with Washington State University to test prototypes of deep furrow conservation drills that reduce the soil disturbed on the ground's surface. The method can reduce erosion by 40 percent, according to Ecology's draft report.

The public can read the draft report that outlines the dust control plan and comment on it until Dec. 12 at [bit.ly/WallulaDust](http://bit.ly/WallulaDust). Comments also can be mailed to Laurie Hulse-Moyer, Washington Dept. of Ecology, Air Quality Program, P.O. Box 47600, Olympia WA 98504-7600.

*Annette Cary; 509-582-1533*