



Appendix J: Aesthetics/Visual Quality Resource Report

For Programmatic Environmental Impact Statement on Utility-Scale Solar Energy Facilities in Washington State

By

Environmental Science Associates

For the

Shorelands and Environmental Assistance Program

Washington State Department of Ecology

Olympia, Washington

September 2024

Table of Contents

| | |
|---|------------|
| Acronyms and Abbreviations List | iii |
| Executive Summary | iv |
| Crosswalk with Aesthetics/Visual Quality Resource Report for Utility-Scale Onshore | |
| Wind Energy | v |
| 1 Introduction | 1 |
| 1.1 Resource description | 1 |
| 1.2 Regulatory context | 2 |
| 2 Methodology | 4 |
| 2.1 Study area | 4 |
| 2.2 Technical approach | 6 |
| 2.3 Impact assessment approach | 6 |
| 3 Technical Analysis and Results | 8 |
| 3.1 Overview | 8 |
| 3.2 Affected environment | 8 |
| 3.3 Potentially required permits | 10 |
| 3.4 Small to medium utility-scale facilities of 20 MW to 600 MW (Alternative 1) | 10 |
| 3.4.1 Impacts from construction | 10 |
| 3.4.2 Impacts from operation | 16 |
| 3.4.3 Impacts from decommissioning | 20 |
| 3.4.4 Actions to avoid and reduce impacts | 21 |
| 3.4.5 Unavoidable significant adverse impacts | 24 |
| 3.5 Large utility-scale facilities of 601 MW to 1,200 MW (Alternative 2) | 24 |
| 3.5.1 Impacts from construction | 24 |
| 3.5.2 Impacts from operation | 26 |
| 3.5.3 Impacts from decommissioning | 26 |
| 3.5.4 Actions to avoid and reduce impacts | 27 |
| 3.5.5 Unavoidable significant adverse impacts | 27 |
| 3.6 Solar energy facility and co-located battery energy storage systems (Alternative 3) | 27 |
| 3.6.1 Impacts from construction | 27 |
| 3.6.2 Impacts from operation | 28 |
| 3.6.3 Impacts from decommissioning | 29 |
| 3.6.4 Actions to avoid and reduce impacts | 29 |
| 3.6.5 Unavoidable significant adverse impacts | 29 |
| 3.7 Solar energy facilities that include agricultural land uses (agrivoltaic) (Alternative 4) | 30 |
| 3.7.1 Impacts from construction | 30 |
| 3.7.2 Impacts from operation | 31 |
| 3.7.3 Impacts from decommissioning | 31 |
| 3.7.4 Actions to avoid and reduce impacts | 32 |
| 3.7.5 Unavoidable significant adverse impacts | 32 |

| | |
|---------------------------------|-----------|
| 3.8 No Action Alternative | 32 |
| 4 References | 33 |

List of Figures and Tables

Figures

| | |
|---|----|
| Figure 1. Solar Energy Facilities PEIS – geographic scope of study | 5 |
| Figure 2. Relative scale of typical solar array | 13 |
| Figure 3. Relative scale of typical solar array with ancillary facilities | 13 |

Table

| | |
|---|---|
| Table 1. Applicable laws, plans, and policies | 2 |
|---|---|

Acronyms and Abbreviations List

| | |
|---------|---|
| BESS | battery energy storage system |
| BLM | Bureau of Land Management |
| FAA | Federal Aviation Administration |
| GMA | Growth Management Act |
| KOP | key observation point |
| MW | megawatt |
| PEIS | Programmatic Environmental Impact Statement |
| PV | photovoltaic |
| SEPA | State Environmental Policy Act |
| UGP EIS | <i>Upper Great Plains Wind Energy Final Programmatic Environmental Impact Statement</i> |
| USFS | U.S. Forest Service |

Executive Summary

This resource report describes the visual resource conditions in the study area. It also describes the regulatory context and potential impacts and actions that could avoid or reduce impacts.

The impact analysis addressed the following types of impacts relative to aesthetics and visual quality for each of the utility-scale solar facility types evaluated in the Programmatic Environmental Impact Statement (PEIS):

- Long-term change or reduction in visual quality
- Creation of a new source of light or glare that would adversely affect day or nighttime views in the area

Findings for aesthetics and visual quality impacts described in this resource report are summarized as follows:

- Depending on the location and size of facility sites and visual characteristics of the activities, visual quality impacts from facility construction, operation, and decommissioning could range from **less than significant impacts** to **potentially significant adverse impacts**. In general, larger facilities and facilities located in high-value scenic landscapes have a greater potential to impact visual quality.
- Construction, operation, and decommissioning activities would likely result in **less than significant impacts** related to light or glare.

Impacts may be avoided and reduced through facility size, location, and design considerations. However, mitigation may not be possible for all impacts, and some utility-scale solar energy facilities may result in **potentially significant and unavoidable adverse impacts** on visual quality, depending on location and design. Determining if mitigation options would reduce or eliminate impacts below significance would be dependent on the specific project and site and local regulations and plans.

Crosswalk with Aesthetics/Visual Quality Resource Report for Utility-Scale Onshore Wind Energy

Two PEISs are being released at the same time, one for utility-scale solar energy facilities and one for utility-scale onshore wind energy facilities. This crosswalk identifies the areas with substantial differences between the aesthetics/visual quality resource reports for each PEIS.

| Utility-Scale Solar Energy PEIS (this document) | Utility-Scale Onshore Wind Energy PEIS |
|---|---|
| <ul style="list-style-type: none">• Different specific visual quality, light, and glare conditions associated with facilities and resulting different ranges of potential impacts• Some differences in actions to avoid and reduce impacts | <ul style="list-style-type: none">• Different specific visual quality, light, and glare conditions associated with facilities and resulting different ranges of potential impacts• Some differences in actions to avoid and reduce impacts |

1 Introduction

This resource report describes aesthetics and visual quality within the study area and assesses probable impacts associated with types of facilities (alternatives), including a No Action Alternative. Chapter 2 of the State Environmental Policy Act (SEPA) Programmatic Environmental Impact Statement (PEIS) provides a description of the types of facilities evaluated.

This section provides an overview of the aspects of aesthetics and visual quality evaluated and lists relevant regulations that contribute to the evaluation of potential impacts.

1.1 Resource description

Visual resources refer to all objects (built and natural, moving and stationary) and features (e.g., landforms and waterbodies) that are visible on a landscape. These resources add to or detract from the aesthetic or scenic quality (or visual appeal) of the landscape. A visual impact is the creation of an intrusion or perceptible contrast that affects the scenic quality of a landscape. A visual impact can be perceived by an individual or group as either positive or negative, depending on a variety of factors or conditions (e.g., personal experience, time of day, and weather/season).

Visual resources considered in this analysis include the following:

- Designated scenic vistas
- Designated scenic corridors, including roadways, trails, rivers, and streams (including federally designated Wild and Scenic Rivers)
- Designated viewsheds
- Designated ridgelines and other elevated (i.e., visually prominent) natural features
- Areas with comprehensive plan, zoning, or other land controls that define an area as scenic or as designated/protected rural character
- Publicly accessible vantage points having moderate to high visual or rural character and quality and that are well traveled and populated
- Recreational resources
- Areas sensitive to light and/or glare, including designated night sky areas, as well as areas potentially affecting military and commercial aircraft

The following resources may have potentially overlapping impacts, or the impact analysis for these resources may be informed by the analysis of aesthetics and visual quality. Impacts on these resources are reported in their respective resource reports:

- **Tribal rights, interests, and resources and historic and cultural resources:** Tribal and cultural resources may be affected by visual changes in some areas, and sensitive viewers could include members of local Tribes. Information regarding potential visual changes inform the Tribal and cultural impact analyses in the *Tribal Rights, Interests, and*

Resources Report (Anchor QEA 2024a) and the *Historic and Cultural Resources Report* (ESA 2024a).

- **Recreation:** Recreation impacts are informed by the analysis of visual effects on the recreational experience. Recreational resource impacts are presented in the *Recreation Resource Report* (ESA 2024b).
- **Biological resources:** Potential effects of light/glare on terrestrial and aquatic species and habitats are analyzed in the *Biological Resources Report* (Anchor QEA 2024b).
- **Land use:** Potential effects to rural character are analyzed in the *Land Use Resource Report* (Anchor QEA 2024c).

1.2 Regulatory context

Table 1 provides an inventory of applicable laws, regulations, policies, and plans that contribute to the evaluation of aesthetics and visual quality. For local regulations and plans, it would be dependent on the location of a facility. The Applicant would consult with the appropriate county or other local officials to determine local regulatory guidance that would be applied to project-level SEPA reviews.

Table 1. Applicable laws, plans, and policies

| Regulation, statute, guideline | Description |
|--|--|
| Federal | |
| U.S. Department of Transportation Federal Highway Administration National Scenic Byways and All-American Roads Program | This program designates National Scenic Roads that meet the criteria for at least one of six “intrinsic qualities”: archeological, cultural, historic, natural, recreational, and scenic. The features contributing to the distinctive characteristics of the corridor’s intrinsic quality are recognized throughout the region and are considered regionally significant. Designated All-American Roads meet two of these “intrinsic qualities.” They are both considered in this analysis as designated scenic resources. |
| Federal Aviation Administration (FAA) Advisory Circular 70/7460-1M, Obstruction Marking and Lighting | The advisory circular describes FAA’s standards for marking and lighting structures to promote aviation safety. These standards are considered in this analysis relative to impacts attributable to light. |
| FAA Interim Policy 78 <i>Federal Register</i> 63276 (regarding glare) | This interim FAA policy provides standards to measuring the ocular (i.e., glare) impact of solar energy systems. |
| U.S. Forest Service (USFS) Forest Service Manual 2800 – Chapter 2380: Landscape Management and USFS Handbook 279 Landscape Aesthetics: A Handbook for Scenery Management | Chapter 2380 states that it is USFS policy to: <ol style="list-style-type: none"> 1. Inventory, evaluate, manage, and, where necessary, restore scenery as a fully integrated part of the ecosystems of National Forest System lands and of the land and resource management and planning process. 2. Employ a systematic, interdisciplinary approach to scenery management to ensure the integrated use of the natural and social sciences and environmental design. 3. Ensure scenery is treated equally with other resources. 4. Apply scenery management principles routinely in all |

| Regulation, statute, guideline | Description |
|--|--|
| | <p>National Forest System activities.</p> <p>USFS's Scenery Management System provides an overall framework for inventory, analysis, and management of scenery on National Forest lands.</p> |
| <p>Bureau of Land Management Manual 8400 – Visual Resource Management and associated handbooks and technical standards</p> | <p>The Visual Resource Management program provides a system for inventory, of scenic values, protection of present and future values through land use planning, and management of visual impacts from proposed projects through project planning and visual design principles.</p> |
| <p>State</p> | |
| <p>Chapter 47.39 Revised Code of Washington, Scenic and Recreational Highway Act of 1967</p> | <p>This legislation establishes the State's Scenic Byway program and standards for eligibility and maintenance of scenic roadways and corridors. These roadways are considered in this analysis as designated scenic resources.</p> |
| <p>Local</p> | |
| <p>County and city comprehensive plans, zoning ordinances, municipal codes, including night sky ordinances</p> | <p>Many counties and cities in Washington have codes, plans, and ordinances that are relevant to an understanding of visual quality and potential impacts of facilities.</p> |

2 Methodology

This section provides an overview of the process for evaluating potential impacts and the criteria for determining the occurrence and degree of impact.

2.1 Study area

The study area for aesthetic and visual resources includes the overall solar energy geographic study area (Figure 1), as well as surrounding viewsheds. The study area for the evaluation of aesthetic and visual resources associated with the construction and operation of the utility-scale solar energy facilities would be determined by the presence (or absence) of aesthetic and visual resources at a proposed facility site. Parameters could include sensitive visual resources such as visually sensitive vantage points, designated scenic resources (as listed previously), and receptors and facilities sensitive to light/glare (such as airports or residential neighborhoods).

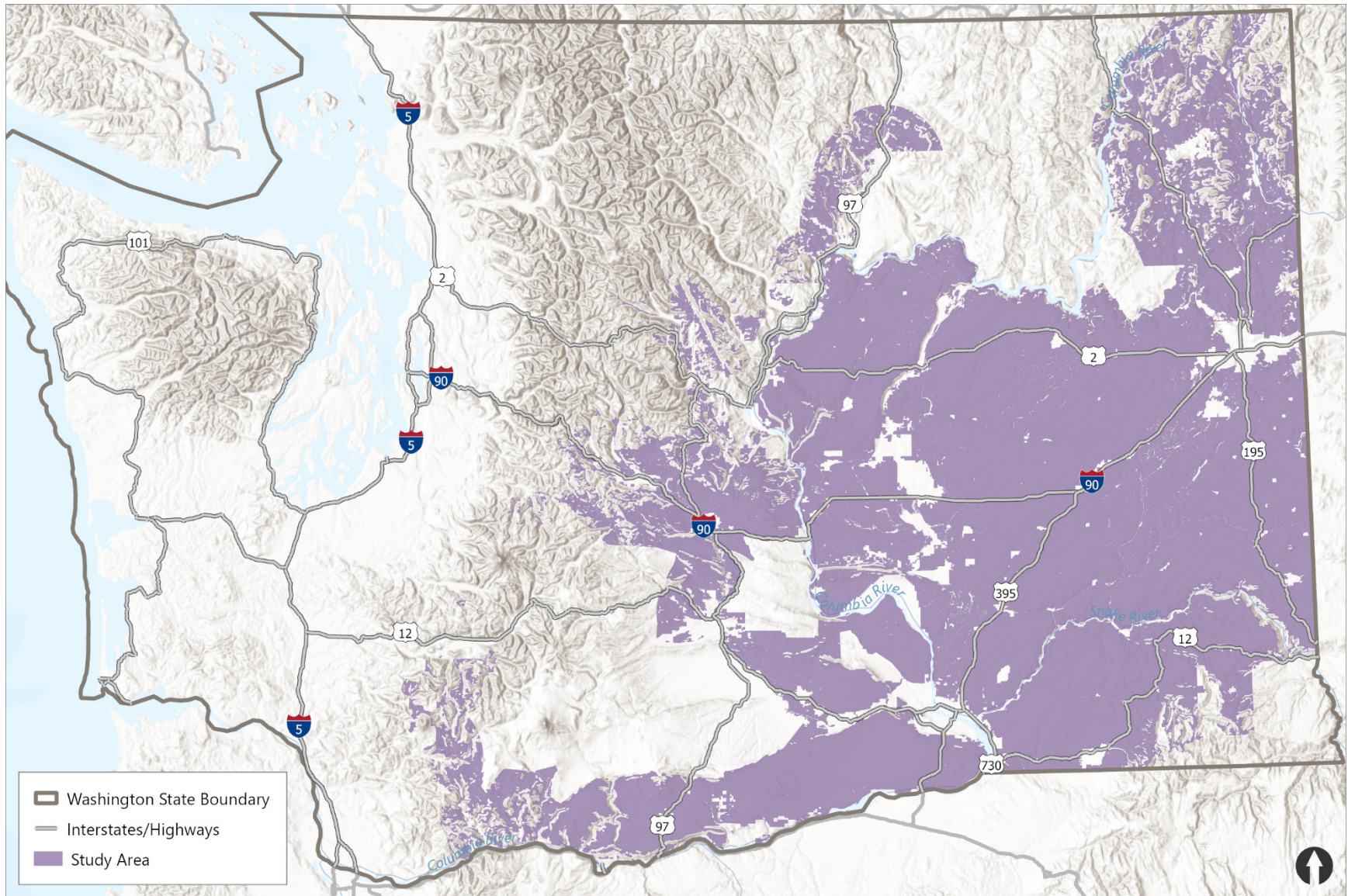


Figure 1. Solar Energy Facilities PEIS – geographic scope of study

2.2 Technical approach

The general technical approach for the qualitative assessment of aesthetic and visual quality impacts included the following:

- Existing visual or rural character, land uses that may be sensitive to strong visual contrast (including light and glare), and sensitive viewer groups in the study area.
- Potential impacts of facilities on existing visual or rural character and sensitive viewer groups or land uses in the study area
- Effects of lighting and glare on sensitive receptors

2.3 Impact assessment approach

The magnitude of the aesthetics and visual quality impacts associated with a given solar energy facility would depend on site- and facility-specific factors, including the following:

- Distance of the facility from publicly accessible vantage points and their placement within the context of foreground, middleground, and background views¹
- Size of the facility (number and spacing of solar panel arrays)
- Size and height of the solar panel array trackers
- Surface treatment of solar panels, buildings, and other structures (primarily color)
- The presence and arrangement of lights in the solar array field and on other structures
- The presence of workers and vehicles for maintenance activities
- Viewer characteristics, such as the number and type of viewers (e.g., landowners in the vicinity of solar energy facilities, residents, tourists, motorists, and workers) and their attitudes toward renewable energy and solar power
- The visual quality and sensitivity of the landscape, including the presence of sensitive visual, Tribal, and cultural resources, including historic properties
- The existing level of development and activities in the solar energy facility area and nearby areas, and the landscape's capacity to withstand human alteration without loss of landscape character (i.e., scenic integrity and visual absorption capability)
- Weather and lighting conditions

These factors would be evaluated in detail during site-specific environmental analysis; a general discussion is provided in this resource report.

In 2015, the Western Area Power Administration and U.S. Fish and Wildlife Service published the *Upper Great Plains Wind Energy Final Programmatic Environmental Impact Statement*

¹ The foreground, middleground, and background refer to areas in space. The foreground refers to the nearest area. The background refers to the area of space in the distance. The middleground occupies the space in between.

(UGP EIS; USDOE and USFWS 2015). The UGP EIS considered the impacts of utility-scale onshore wind turbine energy facilities. The geographic area addressed in the UGP EIS included all or portions of Iowa, Minnesota, Montana, Nebraska, North Dakota, and South Dakota. The variety of landscapes in this large region is similar to those found within the study area of the PEIS. These include large expanses of undeveloped or agricultural and rural lands dissected by waterways, small to moderately sized population centers, foothills and mountains, and recreational areas. The analysis of visual resources in the UGP EIS relied on a large number of studies to provide a basis for determining impacts and their severity. Many of the mitigation measures presented in the UGP EIS are also applicable to utility-scale solar energy facilities considered in the PEIS. This aesthetics and visual quality analysis incorporates much of the UGP EIS visual analysis methodology.

The Bureau of Land Management's (BLM's) *Draft Programmatic Environmental Impact Statement for Utility-Scale Solar Energy Development* has also been consulted and incorporated by reference (BLM 2024). The 11-state region covered in the BLM Draft PEIS includes portions of Washington.

For purposes of this evaluation, a significant impact on aesthetics and visual quality was considered to occur if a utility-scale solar energy facility would result in the following:

- Long-term changes in visual quality that would substantially contrast with the existing visual or rural character or with designated scenic resources, including:
 - Large-scale permanent clearing of vegetation
 - Construction of a large structure in a previously undeveloped area
 - Construction of a structure that would block existing views
- Creation of a new source of light or glare that would adversely affect views in the area continuously or for most day or night hours and be visible to a substantial number of people

3 Technical Analysis and Results

3.1 Overview

This section provides an analysis of potential impacts on aesthetics and visual quality that might occur for utility-scale solar energy facilities analyzed in the PEIS. The temporal scope of this analysis assumes that utility-scale solar energy developments would be constructed between approximately June 2025 and January 2045, with construction of individual facilities taking 6 to 18 months. An approximate 50-year scope of analysis is assumed to encompass the period in which utility-scale solar energy developments are likely to be constructed and operational. This section also evaluates actions that could avoid, minimize, or reduce the identified impacts and potential unavoidable significant adverse impacts.

3.2 Affected environment

The affected environment represents the conditions before any construction begins. The study area analyzed in this resource report encompasses a wide variety of landscape types determined by geology, topography, climate, soil type, hydrology, and land use. Included in this study area are diverse landscapes such as the foothills of the Cascade Range, Okanagon Big Bend, the Yakima Valley, and the Palouse region. Overall, the study area is relatively evenly divided between level terrain with long viewing distances and hilly topography consisting of valleys and ridgelines.

Although much of the region is sparsely populated, human influences have altered much of the visual landscape, especially with respect to land use and land cover; in some places, intensive human activities, particularly agriculture, have seriously altered visual qualities. There are very few urban areas with populations of more than 50,000, and overall, the region has a rural character, with many widely scattered small towns.

The term “rural character” has different definitions including a definition under the Washington State Growth Management Act (GMA). The GMA identifies rural character as patterns of land use and development that, among other things, allow open space, the natural landscape, and vegetation to predominate over the built environment, and provide visual landscapes that are traditionally found in rural areas and communities. For more information on rural character, refer to the *Land Use Resource Report*.

Much of the undeveloped areas in the hilly terrain are forested. In more level undeveloped areas, the non-agricultural landscape is more of sparsely vegetated plains and plateaus. In the central areas of the state, these give way to the Columbia River and its tributaries, which dissect an otherwise continuous landscape expanse. Large Tribal reservations and federal and state government holdings contribute to the undeveloped landscape, with the exception of clusters of structures within those holdings.

The air quality in many of these more undeveloped areas is high and the humidity is often low. Given this, and the general lack of vertical relief and absence of trees and buildings, it is possible to see for great distances in many parts of the study area. In general, the undeveloped areas of the study area have dark night skies, with relatively few sources of light pollution.

The western portion of the study area is higher in elevation, in some areas almost mountainous (i.e., the Cascade Range foothills). Resource extraction activities (e.g., logging and mining) and recreation are land uses that may impact visual characteristics of the landscape. Because of the greater topographic relief and diversity of vegetation and the presence of mountains, buttes, rock outcroppings, and mountain streams, the visual diversity of the landscape is generally higher than in the central and eastern portion of the study area, and visual quality generally is also higher. In some areas within or near the study area, particularly in areas with national/state parks, waterbodies, forests, and other outdoor recreational opportunities, visual quality is very high, making these sites extremely attractive to tourists and other recreational users.

There are extensive scenic resources that occur within or near the study area, such as national and state parks, monuments, and recreation areas; historic sites, parks, memorials, and landmarks; National Wild and Scenic Rivers, national historic trails, scenic highways, and national wildlife refuges; and other designated scenic resources. In addition, many other scenic resources exist within or near the study area on federal, state, and other non-federal lands, including traditional cultural properties important to Tribes and state or locally designated scenic resources, such as state-designated scenic highways, state parks, and county parks. Many of these designated scenic resources provide views of broad scenic vistas.

The various scenic attractions within the study area draw tourists to the study area and surrounding lands each year and contribute to making tourism a component of many regional and local economies. For many individuals, however, their experience of the visual character of the study area is limited to the views from their vehicles from the interstate, U.S., and state highways that cross the region—for instance, I-82, I-90, US 12, US 97, and US 395—lending particular importance to the viewsheds of these roadways. There are National Scenic Byways, designated by the Federal Highway Administration, including Mountains to Sound, Coulee Corridor, and International Selkirk Loop (USDOT 2024). There are also more than 100 state-designated Scenic Byways distributed across every region of the state, including the study area. Parts of two rivers in the state designated as National Wild and Scenic Rivers also traverse portions of the study area (National Wild and Scenic Rivers System 2024). These are the Klickitat River and the White Salmon River.

Sensitive viewer groups are varied throughout the study area. These groups range from people in residential areas in less developed and agricultural areas, to motorists and recreationalists/tourists. The viewing experience for each group would vary, depending on the length of time and distance the viewer would be exposed to a solar facility and the physical conditions of the vantage point and viewshed. For instance, passengers in a vehicle traveling at highway speeds, pedestrian/bike path users, and visitors to scenic lookouts located

approximately the same distance from a facility would view that facility for different lengths of time and, as a result, would experience the effect of visual change resulting from the facility siting differently.

3.3 Potentially required permits

None of the federal or state laws, plans, and policies presented in Table 1 require permits related to aesthetics and visual quality. However, local land use development ordinances may require some form of design approval (i.e., in designated scenic corridors) or night sky exemption related to safety or obstruction lighting. Local land use permits may also require that projects demonstrate conformance with zoning and comprehensive plan designations, which may include areas of rural character. Federally managed lands also have planning requirements for the protection of visual resources and would evaluate visual effects from proposed projects during right-of-way or leasing processes.

3.4 Small to medium utility-scale facilities of 20 MW to 600 MW (Alternative 1)

This section describes potential impacts on aesthetics and visual quality due to the site characterization, construction, operation, and decommissioning of small to medium utility-scale solar energy facilities.

3.4.1 Impacts from construction

3.4.1.1 *Change or reduction in visual quality*

Construction for a utility-scale solar energy facility would involve a range of activities associated with potential visual impacts. Construction activities, including site characterization activities, are dependent on the site conditions and facility design details; however, they could include activities that result in contrasts in form, line, color, and texture; worker presence and activity; dust; and emissions. Construction of a solar energy facility would typically involve the following major actions with potential visual impacts:

- Establishing site access
- Vegetation clearing and grading (with associated debris)
- Constructing and using temporary staging and laydown areas
- Modifying public roads, if needed
- Constructing internal service roads
- Erecting security fencing and road access gates
- Constructing foundation posts or piles to support the solar arrays, including pile driving
- Assembling the solar array tracker system and installing solar panels
- Installing and connecting inverter/transformer and electrical components
- Grading and constructing foundations for solar array inverter and transformer pads, buildings, collector substation, battery storage system, and switchyards

- Constructing building(s), collector substation, battery storage system, and other supporting components
- Constructing meteorological towers
- Constructing and connecting the electrical collector lines and overhead gen-tie line to the collector substation
- Connecting battery storage system to the collector substation
- Conducting revegetation

Additional site characterization and construction activities may also be necessary at very remote locations or for the bigger range of solar facility sizes; they may include constructing temporary offices or sanitary facilities.

Construction visual impacts would vary in frequency and duration throughout the course of construction. There may be periods of intense activity followed by periods with less activity. Visual impacts would, to some degree, vary in accordance with construction activity levels. Construction schedules are also specific to each facility site and design. While many facilities might be completed within 1 year, other facilities may take longer and could involve phased development, with construction-related visual impacts therefore lasting longer.

Vegetative clearing, roads, and staging areas

Construction of a utility-scale solar energy development would require clearing of vegetation, large rocks, and other objects. The nature and extent of clearing are affected by the requirements of the facility, the types of vegetation, and other objects to be cleared. Visual impacts associated with vegetation clearing include the potential loss of vegetative screening, which would result in the opening of views, potentially significant visual changes for viewers close to the facility construction, and potentially significant changes in line and color for viewers with distant views of the facility. In general, the impacts would be greater in more heavily vegetated (scrub) areas, where vegetation clearing impacts are more conspicuous, particularly in areas of strong color contrasts between vegetation and soil; however, in some situations, uncleared vegetation outside the facility might screen views of the cleared areas, reducing visible contrast. The presence of snow cover might accentuate color contrast. In sparsely vegetated areas, visual impacts from vegetation clearing would typically be expected to be less, because there would normally be less vegetation removal and there are generally fewer contrast issues associated with vegetation removal in these areas.

Constructing new temporary and permanent access roads and/or upgrading existing roads would be required to support facility construction and maintenance activities. Roads are expected to be topped with aggregate. Road development may introduce strong visual contrasts in the landscape, depending on the elevation compared to the surrounding area, the relationship of the routes to surface contours, and the widths, lengths, and surface treatments of the roads. Construction of access roads would have some associated residual impacts (e.g., vegetation disturbance) that could be evident for some years afterward, with a gradual diminishing of impacts over time as vegetation is re-established. The length of time required for vegetation to re-establish varies greatly depending on location, weather patterns, soil fertility,

surrounding land use, and the type of vegetation planted or recruited (e.g., grasses, forbs, shrubs, trees). Refer to the *Biological Resources Report* for more discussion of vegetation. These impacts could be lessened by application of mitigation measures, which are presented in Section 3.4.4.

The nature and extent of visual impacts associated with construction laydown areas and crane staging areas would depend in part on the size of the area and the nature of required clearing and grading and on the types and amounts of materials stored at the laydown areas. The presence of materials and equipment in these areas would introduce temporary changes in the visible landscape, and additional visual contrasts could be introduced by any vegetation clearing or grading required. Most of these areas would be restored to pre-construction conditions immediately after completion of construction. However, as noted previously, some associated residual impacts (e.g., vegetation disturbance) could be evident for some years afterward, with a gradual diminishing of impacts over time. These impacts could be reduced by application of mitigation measures, which are presented in Section 3.4.4.

Constructing solar arrays and associated facilities

Construction of a solar panel array, support facilities, and interconnector and gen-tie lines would be required for utility-scale solar energy facilities. The relative scale of typical solar array components and other buildings and potential elements of solar facilities are compared in Figures 2 and 3. In general, larger facilities would require construction of more photovoltaic (PV) arrays and ancillary structures and facilities over a much larger and broader land area, which would lead to more impacts. Construction activities associated with the panel arrays and support facilities could produce visual contrast by suspended dust and loss of vegetation. The construction activities described previously require work crews, small vehicles, and large equipment that would add to the temporary visual impacts of construction.

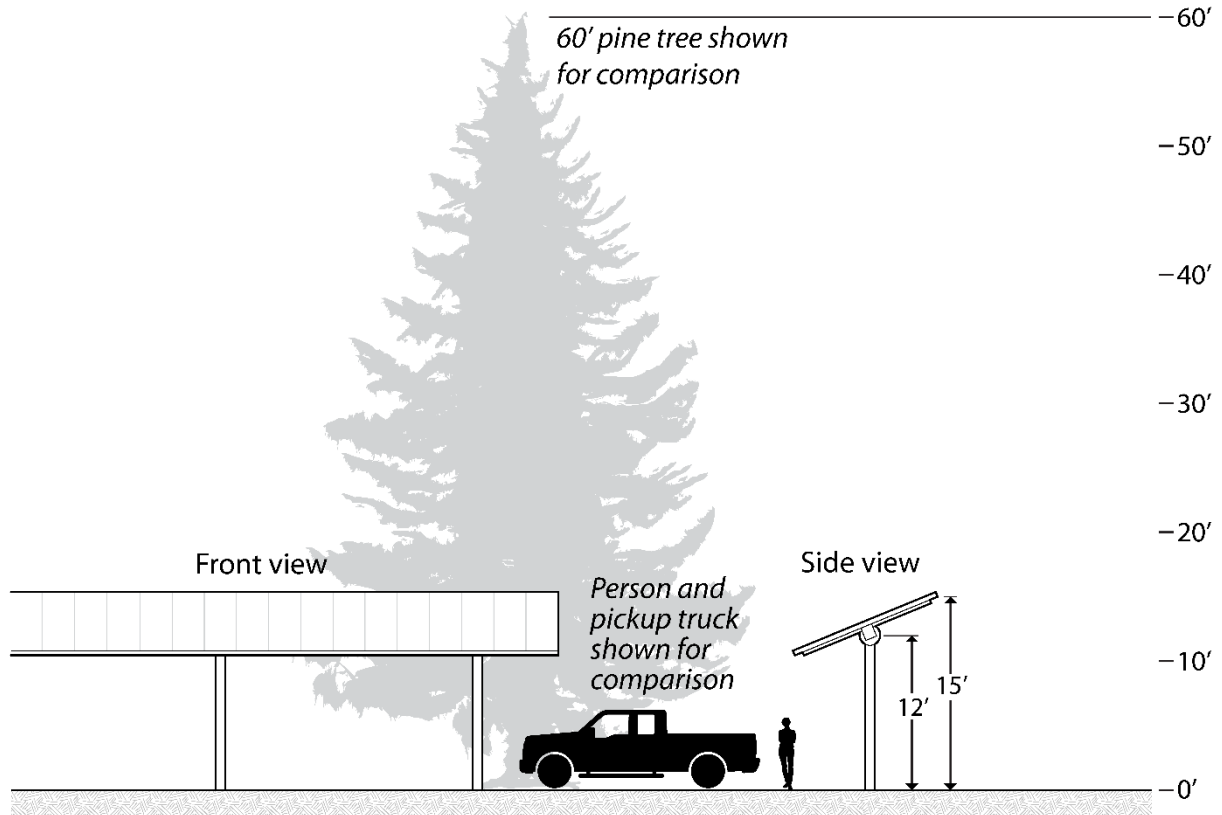


Figure 2. Relative scale of typical solar array

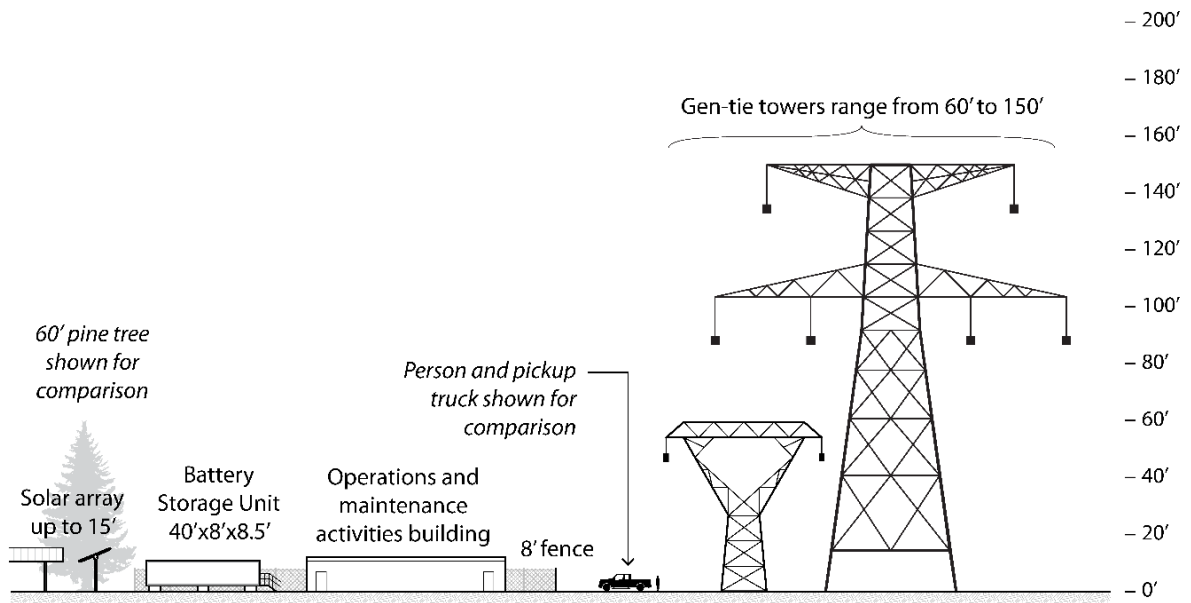


Figure 3. Relative scale of typical solar array with ancillary facilities

Dust and excavation

Traffic would produce visible activity and dust in dry soils. Suspension and visibility of dust would be influenced by vehicle speeds, road surface materials, and weather conditions. Temporary parking for vehicles would be needed at or near work locations. Unplanned and unmonitored parking could likely expand these areas, producing visual contrast due to suspended dust and loss of vegetation. Construction activities would proceed in phases, with several crews moving through a given area in succession, giving rise to brief periods of intense construction activity (and associated visual impacts) followed by periods of inactivity. Cranes and other construction equipment would produce emissions while in operation and may create visible exhaust plumes.

Excavation would damage or remove vegetation, expose bare soil, and suspend dust. Soil stockpiles (if not removed) could be visible for the duration of construction. Soil scars, exposed slope faces, eroded areas, and areas of compacted soil could result from excavation, leveling, and equipment/vehicle movement. Invasive species may colonize disturbed and stockpiled soils and compacted areas. These species may be introduced naturally in seeds, plants, or soils introduced for intermediate restoration or by vehicles. In some situations, the presence of invasive species may introduce contrasts with naturally occurring vegetation, primarily in color and texture. The presence of workers and construction activities could also result in litter and debris that could create negative visual impacts within and around work sites. Site monitoring, adherence to standard construction practices, and restoration activities discussed in Section 3.4.4 would reduce many of these impacts.

Other construction activities that could introduce visual contrast with existing landscape conditions include bracing and cutting existing fences; constructing new fences, gates, or cattle guards to contain livestock; and providing temporary walks, passageways, fences, or other structures to prevent interference with traffic. If a mobile or on-site concrete batch plant were required, it might temporarily create a visible steam plume under certain atmospheric conditions.

Summary of construction visual quality impacts

Depending on the facility location, there could be some situations where work areas would be blocked from view by intervening topography or screened by vegetation. There could also be facilities located in unpopulated or sparsely populated areas. However, some facilities would be in proximity to roadways, towns and cities, recreational areas, and other vantage points that would provide views of these developments. Impacts on residents are generally greater than those on more transient viewers, such as drivers or workers, in part because residents are likely to view the construction of solar energy facilities more frequently and for longer durations.

A utility-scale solar energy facility constructed in a high-value scenic landscape typically would be more conspicuous and therefore perceived as having greater visual impact than if that same facility were constructed in an industrialized setting of low scenic value where similar facilities were already visible. Some landscapes have special meaning to some viewers because of unique scenic, Tribal, cultural, or ecological values and are therefore perceived as being more

sensitive to visual disturbances. Depending on visibility factors, solar energy facilities constructed within or near sensitive landscapes, such as state and national parks, historic sites, landscapes sacred to Tribes, scenic highways and trails, recreational attractions, and other valued cultural features, may be of particular concern. Depending on the facility location and topography, visual impacts could extend to viewers outside the study area of the PEIS.

Depending on the location and size of facility sites and visual characteristics of the construction activities, visual quality impacts from construction would range from **less than significant impacts to potentially significant adverse impacts**. Section 3.4.4 presents actions that could avoid or reduce construction impacts of utility-scale solar facilities on the visual environment.

3.4.1.2 New source of light or glare

Lighting and glare

Site characterization and construction of a utility-scale solar energy facility would be expected to occur during daylight hours. Some nighttime activities may be performed such as electrical connection, inspection, and testing activities. It is assumed that such activities would be performed with temporary lighting that would be directed downward to focus illumination on work areas and minimize impacts on neighboring properties in the vicinity of a facility. Any lighting used during construction activities would be occasional, temporary, and shielded downward. These facilities would require substantial areas of undeveloped or minimally developed land (up to approximately 6,000 acres), which would likely put much of the construction activities away from receptors sensitive to light. The potential for nighttime lighting during construction to impact nighttime views would be minimal.

Construction would involve increased vehicle traffic and the presence, transport, and use of construction equipment and materials. These activities could temporarily increase glare conditions in and around a facility site if activities were associated with an increased presence of reflective materials, potentially including construction equipment, new materials (i.e., not yet subjected to weathering), and vehicle windows. However, an increase in glare that could result from the presence of construction equipment or materials would be minimal and temporary. Only portions of the facility site would be actively under construction at a particular time. Such new temporary sources of glare would not remain in any one fixed location for the entire duration of construction but would be present at different locations depending on the phase of construction activities throughout the site. Facility construction would not introduce new, substantial sources of glare that could affect daytime views in the vicinity.

Through compliance with laws and permits and with implementation of actions that could avoid and reduce impacts, construction and decommissioning activities would likely result in **less than significant impacts** related to light or glare.

3.4.2 Impacts from operation

3.4.2.1 *Change or reduction in visual quality*

The operation and maintenance of solar energy facilities and associated electricity interconnector and gen-tie lines, roads, and rights-of-way would have potentially substantial long-term visual impacts. Site operation impacts would generally occur throughout the life of the facility. The effects of reflection off the solar panels are discussed in Section 3.4.2.2.

The dimensions of the solar field (the area devoted to solar panel arrays) for a given facility would depend on specific characteristics of the site and the facility design. The introduction of strong linear and color contrasts in middleground and background views (i.e., 3 to over 10 miles) as a result of clearing could potentially have substantial visual impacts, particularly in more heavily vegetated areas where the viewer is elevated, so that substantial portions of the solar field were visible.

In some circumstances, the contrast could be visible for many miles. The BLM Draft PEIS determined that, because of their size and visual contrast with surrounding natural-appearing landscapes, in some circumstances, PV solar energy facilities might be visible from greater than 20 miles (32 km) away. These values are approximate, dependent on facility size, and would be subject to lighting, atmospheric, and other effects (BLM 2024).

Vegetated and cleared areas

In addition to contrasts resulting from the exposure of bare soil, vegetation removal could result in windblown dust that could create color contrasts and visible movement of dust clouds, obscure views of nearby landscape features, and degrade general visibility of both day and night skies.

In naturally vegetated areas where bare soils become exposed (generally associated with construction activities), reclamation efforts would include reseeding these areas. Good mitigation practice would dictate reseeding with native plants, which would minimize visual contrasts but, depending on circumstances, in some more arid environments within the study area, a number of years might pass before color and texture contrasts between reseeded and uncleared areas would no longer be noticeable. If a lack of proper management led to the growth of invasive species in the reseeded areas, noticeable color and texture contrasts might remain indefinitely. The unsuccessful reclamation of cleared areas may also result in soil erosion, ruts, gullies, or blowouts and could cause long-term negative visual impacts.

Other cleared areas would include maintenance roads and facility access roads (e.g., electric substations or pump stations). Some support facilities would be surrounded by cleared areas. Visual contrasts associated with these cleared areas would include the potential loss of vegetative screening, which would result in the opening of views and potentially significant visual changes for viewers close to the cleared area. Clearing for roads might be subject to some of the linear contrast. The cleared area would be relatively narrow, especially compared with typical electricity interconnector and gen-tie line right-of-way clearings.

Facility components and buildings

For purposes of the PEIS, it is assumed mono- or polycrystalline panels would be used to generate electricity by converting sunlight into direct current electrical energy. Solar energy facilities considered in the PEIS would have PV panels in rectangular arrays mounted on sun-tracking systems that might add slightly to the visual impact, depending on the technology employed and its configuration. The rectilinear and repeating regular visual pattern created by many thousands of identical solar panels and mounting structures in evenly spaced rows (usually in a rectilinear grid) often creates a distinctly non-natural and sometimes striking and unusual view of the facility that contrasts strongly with natural-appearing backgrounds. When viewed from elevated positions rather than from relatively flat areas, more of the facility would be visible and the regular geometry of the panel arrays would be more apparent, resulting in substantially more visual impact. If a solar array field is bisected by a public roadway, railroad, or trail that carries traffic or pedestrians, the placement of solar panel trackers close to these linear facilities could create a tunnel effect. In Section 3.4.4.1.1, an avoidance measure is provided for site design, suggesting the edges of the solar array fields on either side of the public travelway be set back sufficiently to not cause a tunnel effect. The setback should allow sufficient visual clearance to allow broader views of the sky's horizon, any nearby ridgelines, etc.

Buildings common to solar energy facilities include a control/administrative building, a warehouse-shop building, a security building or gatehouse, and a fire-water pump building. These structures would normally be constructed of sheet metal, concrete, or cinder blocks and would be of varying sizes. Because PV panels are generally low to the ground, about 12 to 15 feet (3.6 to 4.5 meters), most buildings, some tanks, and possibly other facility components would protrude above the PV arrays and would be visible from outside the facility, even in relatively flat areas.

All utility-scale solar energy facilities would also include various tanks for water and gasoline or diesel fuel. Solar energy facilities normally would be fenced around the outside perimeter and might include additional fencing around certain support facilities. Landscaping plantings might be included around the control building or possibly used for visual screening in certain situations.

These built structures would introduce complex rectilinear geometric forms and lines and artificial-looking textures and colors into the landscape that would likely contrast markedly with natural-appearing landscapes. Most buildings and some tanks would be of sufficient height to protrude above the PV arrays as viewed from outside the facility and would likely contrast with the PV arrays.

Operation and maintenance activities and traffic

Operational activities would include routine maintenance (such as washing or cleaning of PV panel surfaces), road and building maintenance, and repairs. These activities could be visible off site in foreground and middleground views and might also generate visible dust plumes in some circumstances.

Maintenance roads (where needed) would generally be dirt or gravel, while some facility access roads might be paved. Roads may introduce strong visual contrasts to the landscape, depending on width, length, surface treatment, and route relative to surface contours. Improper road maintenance could lead to the growth of invasive species or erosion, both of which could introduce undesirable visual contrasts, primarily for foreground and near-middleground views.

Occasional small-vehicle traffic can be expected for testing, commissioning, monitoring, maintenance, and repair, in addition to infrequent large-equipment traffic for solar panel array maintenance or replacements. Both would produce apparent activity and dust in dry soils. Suspension and visibility of dust would be influenced by vehicle speeds and road surface materials. These impacts would be infrequent and of short duration.

Summary of operations visual quality impacts

The degree of visual impact for a utility-scale solar energy facility is determined in part by the facility location and the existing visual landscape, number of viewers who experience the impact, and the type of activities viewers are engaged in when viewing a visual impact and the sensitivity to visual impacts.

In areas of the study area with lower population density, solar energy facilities may be visible for long distances, but they would generally be viewed by few people. Impacts on residents are generally greater than those on more transient viewers, such as drivers or workers, in part because residents are likely to view solar energy facilities more frequently and for longer durations. Facilities located in or near a high-value scenic landscape or in proximity to viewers with unique scenic, Tribal, cultural, or ecological values typically would be more conspicuous and therefore perceived as having greater visual impact than if that same facility were present in a setting of low scenic value where similar facilities were already visible. Likewise, facilities located in or near rural areas would also be perceived to have more visual impact, which would be incompatible with elements of rural character such as a minimization of built structures in open spaces and natural areas and maintaining visual landscapes traditionally found in rural areas. Facility operations that change areas with rural character protections may also result in impacts on land use, which are evaluated in detail in the *Land Use Resource Report*.

Similarly, the level of perceived visual impact may be affected by any type of human alteration of the landscape, including industrial or agricultural. In these areas, the addition of facilities may not be perceived to be as conspicuous as in unaltered landscapes. Depending on the facility location and topography, visual impacts could extend to viewers outside the study area of the PEIS.

Depending on the facility size range and the nature of the facility structures, operation of utility-scale solar energy facilities could result in a range from **less than significant impacts to potentially significant adverse impacts** on visual quality.

3.4.2.2 New source of light or glare

Lighting

Solar energy facilities would include exterior lighting around buildings, parking areas, and other work areas. Security and other lighting around and on support structures (e.g., the control building) could contribute to light pollution. Maintenance activities conducted at night, such as panel washing, might require vehicle-mounted lights, which also could contribute to light pollution. Light pollution impacts associated with utility-scale solar energy facilities include skyglow, light trespass, glare, light clutter, and over-illumination.

Federal Aviation Administration (FAA)-compliant aircraft warning lights could be required for meteorological or interconnector and gen-tie towers (or other structures) 200 feet (61 meters) tall or higher and might be required in some circumstances for lower height structures. FAA guidelines for marking and lighting facilities could require aircraft warning lights that flash white during the day and at twilight and red at night (FAA 2020), or alternatively, red or white strobe lights flashing during the day and/or at night. Daylight lighting might be avoided in some cases by painting the tower orange and white according to FAA guidelines, but this practice could result in increases in visual contrast for the tower during the day. Terrain, weather, and other location factors allow for adjustments to the manner in which FAA requirements are applied.

The presence of aircraft warning lights would greatly increase visibility of the meteorological or interconnector and gen-tie lines at night, because the synchronized flashing red warning lights or strobes could be visible for long distances. In the dark nighttime sky conditions typical of the predominantly rural setting within the study area, the warning lights could potentially cause significant visual impacts, especially if few similar light sources were present in the area. Because of intermittent operation, however, marker beacons would not likely contribute substantively to skyglow. White lights in daylight conditions would likely be less obtrusive.

Glare

The reflection of sunlight off of solar panel surfaces would be the primary source of potential glare from a facility. However, solar panels are constituted of many solar cells that are designed to capture solar energy in order to convert it into usable energy. Therefore, solar panels are designed to be as light-absorptive as possible in order to maximize the efficiency of energy production. Additionally, PV panels typically are covered with a tempered glass layer that is treated with an anti-reflective coating that further reduces the reflectivity of the panels. When compared to common reflective surfaces, solar panels without an anti-reflective coating are found to produce around the same amount of reflectivity as water, which is about half the amount of reflectivity as standard glass that is commonly used in residential or commercial applications (Shields 2010). If an anti-reflective coating is applied to the solar panels, the reflectivity of the panels can be further reduced to be less than the reflectivity of water.

Additionally, the light reflected from the PV panels would travel above the line of sight of most if not all viewers. PV panel tracking systems would position the arrays so that the sun's rays are perpendicular to the face of the panel. Therefore, light reflected from the panel would be

reflected back toward the sun. During midday conditions, light would be reflected upward toward the sky. The maximum downward angle of the panels would not be below 30 degrees. Therefore, even when the sun angle is low, the reflected sunlight would be directed away from ground-level receptors and motorists along local roads. With these design features, the arrays of solar PV panels would not contribute substantially to glare.

In addition to the panels, facilities would include other components that may have reflective surfaces, such as panel support structures, support building windows, fencing, and interconnector and gen-tie towers and lines, which may also cause glint, glare, and other unusual visual effects. However, these reflections would be minimal when considered with the PV panels and would not contribute substantially to glare.

Summary of operations light and glare impacts

Through compliance with laws and permits and with implementation of actions that could avoid and reduce impacts, operation of facilities would likely result in less than significant impacts related to light or glare.

3.4.3 Impacts from decommissioning

3.4.3.1 Change or reduction in visual quality

Decommissioning of a utility-scale solar energy facility would involve the dismantling and removal of infrastructure associated with the solar panel trackers, the removal of aboveground and some buried ancillary structures, road redevelopment, temporary fencing, and restoration of the decommissioned site to pre-facility conditions. Expected visual impacts of decommissioning activities would be similar to construction activities.

Similar to construction (Section 3.4.1.1), the various decommissioning activities would require work crews, vehicles, and equipment that would have visual impacts during decommissioning.

Restoration activities would typically include recontouring, grading, scarifying, seeding and planting, and stabilizing disturbed surfaces. Newly disturbed soils would create a visual contrast that could persist for several seasons before revegetation would begin to mature and restore the pre-facility visual landscape. Complete restoration of vegetation to pre-facility conditions may take much longer. As noted for construction, the time for vegetation to re-establish varies greatly depending on location, weather patterns, soil fertility, surrounding land use, and the type of vegetation planted or recruited. Invasive species may colonize newly and recently reclaimed areas. These species may be introduced naturally or in seeds, plants, or soils introduced for intermediate restoration, or by vehicles. Non-native plants that are not locally adapted would likely produce visual contrasts with existing vegetation. Refer to the *Biological Resources Report* for more discussion of vegetation.

Depending on the location and size of facility sites and visual characteristics of the decommissioning activities, the decommissioning of small to medium utility-scale solar energy facilities would result in impacts ranging from **less than significant impacts** to **potentially**

significant adverse impacts on visual quality. Decommissioning impacts would last until restoration of the site is complete.

3.4.3.2 *New source of light or glare*

The impacts of decommissioning and site restoration activities would be similar to those identified for construction. Decommissioning is not likely to include nighttime activities and would not create a source of lighting or introduce light pollution that would impact nighttime views. Although decommissioning activities would require the use of vehicles and equipment similar to those required for construction, any sources of glare would be minimal and temporary as equipment would be moved between active work locations on the facility site. No permanent sources of light or glare would remain following decommissioning.

Through compliance with laws and permits and with implementation of actions that could avoid and reduce impacts, decommissioning activities would likely result in **less than significant impacts** related to light or glare.

3.4.4 Actions to avoid and reduce impacts

The preceding section identified potential aesthetic and visual impacts that could result during the construction, operation, and decommissioning of utility-scale solar energy facilities and associated electricity interconnector and gen-tie line. The nature, extent, and magnitude of these potential impacts would vary on a site-specific basis and depend on the specific phase of a facility's lifecycle (e.g., construction or operation). Similarly, aesthetic and visual quality impact mitigation measures appropriate for solar energy and interconnector and gen-tie lines would vary on a site-specific basis and would depend on the specific phase of the facility. Site-specific mitigation actions would be developed during project-specific reviews and permitting for each facility proposed in the future. The following types of actions are appropriate for facility proponents to consider to avoid, minimize, and mitigate potential aesthetics and visual quality impacts.

3.4.4.1 *Siting and design considerations*

Siting and design considerations are actions that could be taken by a developer when developing a facility design or considering a site. These are intended to result in the avoidance, minimization, and/or mitigation of potential resource impacts. The greatest potential for visual impacts associated with utility-scale solar energy facilities and associated electricity interconnector and gen-tie systems would occur as a result of decisions made during the siting and design of the facilities. In many cases, visual impacts associated with these facilities could be avoided or substantially reduced by careful facility siting, as follows:

- Include a visual resource specialist in the planning team to evaluate visual impacts.
- Conduct a detailed visual resource analysis to identify and map landscape characteristics, key observation points (KOPs), and key viewsheds; prominent scenic, Tribal, and cultural landmarks; and other visually sensitive areas near the facility location.

- Consult with the appropriate land management agencies, planning entities, Tribes, and the local public early to provide input on the identification of important visual resources near a facility site and on the siting and design process.
- Use GIS tools and visual impact simulations for conducting visual analyses (including mapping), analyzing the visual characteristics of landscapes, visualizing the potential impacts of facility siting and design, and fostering communication.
- Avoid locating facilities that would alter the visual setting and reduce the historic significance or function.
- Site facilities outside the viewsheds of KOPs, highly sensitive viewing locations, and/or areas with limited visual absorption capability and/or high scenic integrity. If they must be sited within view of KOPs, they should be as far away as possible, as visual impacts generally diminish as viewing distance increases.
- Site developments in already developed landscapes, with due consideration for visual absorption capacity and possible cumulative effects.
- Utilize topography and vegetation as screening devices to restrict views of the facility from visually sensitive areas.
- Avoid siting near prominent landscape features (e.g., peaks and waterfalls).
- Avoid siting linear facilities associated with a solar energy facility, such as interconnector and gen-tie lines and roads, so that they bisect ridge tops or run down the center of valley bottoms. Avoid siting on ridgelines, summits, or other locations where they would be silhouetted against the sky from important viewing locations.
- Site linear features to follow natural land contours rather than straight lines, particularly up slopes. Fall-line cuts should be avoided. Site facilities to take advantage of natural topographic breaks and avoid siting on steep slopes.
- Where array fields would be bisected by public roadways, railways, trails, and other linear features used by the public, set the edges of the solar array fields on either side of the feature back enough so as not to create a “tunnel” effect.
- In forested areas or shrublands, linear facilities should follow the edges of clearings rather than pass through their center.
- Choose locations for interconnector and gen-tie line and right-of-way road crossings of other roads, streams, and other linear features within a corridor to avoid KOP viewsheds and other visually sensitive areas and to minimize disturbance to vegetation and landforms. The rights-of-way should cross linear features (e.g., trails, roads, and rivers) at right angles whenever possible to minimize the viewing area and duration.
- Co-locate interconnector and gen-tie lines and roads within a corridor to use existing/shared rights-of-way, existing/shared access and maintenance roads, and other infrastructure in order to reduce visual impacts.
- Match the siting and design of facilities, structures, roads, and other elements with the existing landscape.
- Provide visual order and unity among clusters of solar panel arrays to avoid visual disruptions.
- Use solar array trackers and other ancillary facilities with visual uniformity in shape, color, and size.

- Choose low-profile structures for ancillary buildings and other structures to reduce their visibility.
- Where screening topography and vegetation are absent, use natural-looking earthwork berms and vegetative or architectural screening to minimize visual impacts. Vegetative screening can be particularly effective along roadways.
- In forested areas and shrublands, openings in vegetation for facilities, structures, and roads should mimic the size, shape, and characteristics of naturally occurring openings.
- Minimize the number of structures required or co-locate to share pads, fences, access roads, lighting, etc.
- Design structures and roads to minimize and balance cuts and fills.
- Set structures, roads, and other facility elements as far back from road, trail, and river crossings as possible to avoid a visual tunneling effect and use vegetation to screen views from crossings.

3.4.4.2 Permits, plans, and best management practices

As noted in Section 3.3, none of the federal or state laws, plans, and policies presented in Table 1 require permits related to aesthetics and visual quality.

Local land use development ordinances may require some form of design approval (e.g., in designated scenic corridors) or night sky exemption related to safety or obstruction lighting. Federally managed lands also have planning requirements for the protection of visual resources and would evaluate visual effects from proposed projects during right-of-way or leasing processes.

3.4.4.3 Additional mitigation measures

This section contains additional measures to reduce adverse impacts on aesthetics and visual quality, as follows:

- Paint grouped structures the same color to reduce visual complexity and color contrast.
- Use materials and surface treatments that repeat and/or blend with the existing landscape.
- Use nonreflective paints and coatings on visible structures to reduce reflection and glare.
- Paint structures before or immediately after installation.
- Use nonspecular conductors and nonreflective coatings on insulators for interconnector and gen-tie lines, as appropriate.
- Use full-cutoff designs that minimize upward light scattering
- Consider using motion-activated security lights.
- Site staging and laydown areas outside the viewsheds of KOPs and not in visually sensitive areas
- Restore disturbed surfaces to their original contours as closely as possible and revegetate immediately after, or contemporaneously with, construction.
- Preserve existing rocks, vegetation, and drainage patterns to the maximum extent possible.

- Slash from vegetation removal should be mulched and spread to cover fresh soil disturbances (preferred) or should be buried. Topsoil from cut/fill activities should be segregated and spread on freshly disturbed areas to reduce color contrast and aid rapid revegetation. Piles should not be left in sensitive viewing areas.
- Round road-cut slopes and vary the cut/fill pitch to reduce contrasts in form and line.
- Excess fill material should not be disposed of downslope in order to avoid creating color contrast with existing vegetation/soils. Minimize color and form contrast from fill piles.
- Paint or coat culvert ends to reduce color contrasts with existing landscape.
- Minimize signage. Paint or coat reverse sides of signs to reduce color contrasts with the existing landscape.
- Implement dust abatement measures in arid environments to minimize the impacts of vehicular and pedestrian traffic, construction, and wind on exposed surface soils.
- Establish a toll-free number for the public to report complaints related to glare from solar panels. If a complaint is received regarding glare from panels, investigate to determine whether the complaint is legitimate and whether the facility is the source of the glare. If it is determined that the facility is the source of glare and it is causing human health or safety hazards (e.g., road or air travel concerns), take all feasible measures to reduce the glare.

3.4.5 Unavoidable significant adverse impacts

Some small to medium utility-scale solar energy facilities may result in **potentially significant and unavoidable adverse impacts** on visual quality, depending on location and design. Determining if mitigation options would reduce or eliminate impacts below significance would be dependent on the specific project and site and local regulations and plans.

3.5 Large utility-scale facilities of 601 MW to 1,200 MW (Alternative 2)

This section describes potential impacts on aesthetics and visual quality due to the construction, operation, and decommissioning of large utility-scale solar energy facilities.

3.5.1 Impacts from construction

3.5.1.1 *Change or reduction in visual quality*

The construction activities for large utility-scale solar energy facilities would be the same as those considered for small to medium facilities. However, there would be substantially more solar panel tracking systems and ancillary structures and facilities over a much larger and broader land area in order to achieve the greater capacity of 601 megawatts (MW) to 1,200 MW.

Given the large area assumed for a large facility—6,010 to 12,000 acres—there could be some situations where work areas would be blocked from view by intervening topography or screened by vegetation. There could also be cases where a facility would be in an unpopulated

or sparsely populated area. However, this would not be the case for most large facilities given the potential size and proximity to roadways, towns and cities, recreational areas, and other vantage points that would have views of these developments. As discussed in Section 3.4.1 for small to medium facilities, impacts on residents are generally greater than those on more transient viewers, such as drivers or workers. A large utility-scale solar energy facility located in or near a high-value scenic landscape or in proximity to viewers with unique scenic, Tribal, cultural, or ecological values typically would be more conspicuous and therefore perceived as having greater visual impact than if that same facility were present in an industrialized setting of low scenic value where similar facilities were already visible. Depending on the facility location and topography, visual impacts could extend to viewers outside the study area of the PEIS.

Depending on the location and size of facility sites and visual characteristics of the construction activities, impacts from facility construction would range from **less than significant impacts** to **potentially significant adverse impacts** on visual quality. In general, larger facilities and facilities located in high-value scenic landscapes have a greater potential to impact visual quality.

Section 3.5.4 presents actions that could avoid or reduce construction impacts of utility-scale solar facilities on the visual environment.

3.5.1.2 New source of light or glare

As noted in Section 3.5.1.1, the facility construction activities occurring for large facilities would be the same as those occurring for small to medium facilities, but over a much larger area. Although there would be a greater area of construction activity and therefore a greater potential for night work requiring lighting, these activities would be occasional, temporary, and shielded downward as described in Section 3.4.

Similarly, for sources of glare, although there would be a greater area of construction activity when compared to small to medium facilities, an increase in glare that could result from the presence of construction equipment or materials would be minimal and temporary. Only portions of an energy facility would be actively under construction at a particular time. Such new temporary sources of glare would not remain in any one fixed location for the entire duration of construction but would be present at different locations depending on the phase of construction activities throughout the site.

Through compliance with laws and permits and with implementation of actions that could avoid and reduce impacts, construction activities would likely result in **less than significant impacts** related to light or glare.

3.5.2 Impacts from operation

3.5.2.1 *Change or reduction in visual quality*

Visual impacts associated with the operation of utility-scale solar energy facilities include the presence of solar panel trackers, ancillary structures, roads, vehicles, and workers conducting maintenance activities. The effects of glare from PV panel reflection are discussed in Section 3.5.2.2.

A facility site could be blocked from view by intervening topography or screened by vegetation or located in an unpopulated or sparsely populated area. However, this would not be the case for most large facilities given the vast size of larger facilities and proximity to roadways, towns and cities, recreational areas, and other vantage points that would provide views of these developments. Large facilities are generally more likely to be visible than small to medium facilities. As discussed for small to medium sized facilities, impacts would depend on the specific location of the facility and proximity to different types of sensitive viewers.

Depending on the facility size range and the nature of the facility structures, operation of utility-scale solar energy facilities could result in a range from **less than significant impacts to potentially significant adverse impacts** on visual quality. In general, larger facilities and facilities located in high-value scenic landscapes would have a greater potential for impacts.

3.5.2.2 *New source of light or glare*

The primary light and glare impacts associated with utility-scale solar energy developments would result from the introduction of the fields of solar panel tracking systems with up to 3,600,000 PV panels. The visible structures would potentially produce visual contrasts in light by virtue of their design attributes and the reflectivity of their surfaces and resulting glare. In addition, marker lighting could cause substantial visual impacts at night.

The types of light and glare impacts from the operation of a large solar energy facility would be the same as for small to medium facilities described in Section 3.4; however, the impacts would occur over a much broader area. For the most part, similar to small to medium facilities, the lighting and glare impacts would be limited by design considerations, shielding, and other measures.

Through compliance with laws and permits and with implementation of actions that could avoid and reduce impacts, operation of facilities would likely result in **less than significant impacts** related to light or glare.

3.5.3 Impacts from decommissioning

3.5.3.1 *Change or reduction in visual quality*

Decommissioning activities for a large utility-scale solar energy facility would be similar to construction activities (Section 3.5.1.1). The various decommissioning activities described previously require work crews, vehicles, and equipment that would add to visual impacts during

decommissioning. Decommissioning of a large-scale utility-scale solar energy facility would generally involve the same activities as described in Section 3.4.3 but on a larger scale.

Depending on the location and size of facility sites and visual characteristics of the decommissioning activities, impacts from facility decommissioning would range from **less than significant impacts** to **potentially significant adverse impacts** on visual quality.

Decommissioning impacts would last until restoration of the site is complete. In general, larger facilities and facilities located in high-value scenic landscapes have a greater potential to impact visual quality.

3.5.3.2 *New source of light or glare*

The impacts during decommissioning and site restoration activities would be similar to those identified for construction. Decommissioning of a large utility-scale solar energy facility would involve the same activities described in Section 3.4.3 but on a larger scale.

Through compliance with laws, permits, and with implementation of actions that could avoid and reduce impacts, decommissioning activities would likely result in **less than significant impacts** related to light or glare.

3.5.4 Actions to avoid and reduce impacts

The measures to minimize, reduce, and/or mitigate aesthetic and visual quality impacts for large facilities would be the same as those in Section 3.4.4. Specific measures appropriate for solar energy facilities would vary on a site-specific basis and would depend on the specific phase of the facility construction, operations, and decommissioning.

3.5.5 Unavoidable significant adverse impacts

Some large utility-scale solar energy facilities may result in **potentially significant and unavoidable adverse impacts** on visual quality, depending on location and design. Determining if mitigation options would reduce or eliminate impacts below significance would be dependent on the specific project and site and local regulations and plans.

3.6 Solar energy facility and co-located battery energy storage systems (Alternative 3)

This section describes potential impacts on aesthetic and visual quality due to the construction, operation, and decommissioning of utility-scale solar energy facilities with battery energy storage systems (BESSs).

3.6.1 Impacts from construction

The construction activities for solar facilities with a co-located BESS would be the same as those for facilities without a BESS. Installation of the BESS would be similar to the construction of other support facilities and structures included in the facility construction. BESSs are usually

installed in a graveled area where vegetation clearing and gravel surfacing would be required. For this analysis, it is assumed the BESS would be located within the solar energy facility site footprint and would require a small additional area of development.

3.6.1.1 Change or reduction in visual quality

BESSs are similar to other support facilities for a utility-scale solar energy facility and would not contribute to visual impacts from facility construction more than what was described for small to medium and large facilities.

Depending on the facility size range and the nature of the facility structures, operation of utility-scale solar energy facilities could result in a range from **less than significant impacts to potentially significant adverse impacts** on visual quality. Section 3.6.4 presents actions that could avoid or reduce impacts of utility-scale solar facility on the visual environment.

3.6.1.2 New source of light or glare

Sources of light and glare during construction would be largely the same as those for facilities without a BESS. The additional BESS construction may require night work lighting; however, these activities would be occasional, temporary, and shielded downward as described for facilities without a BESS. Construction of a facility with a co-located BESS would not introduce new, substantial sources of glare that could affect daytime views in the vicinity.

Through compliance with laws and permits and with implementation of actions that could avoid and reduce impacts, construction activities would likely result in **less than significant impacts** related to light or glare.

3.6.2 Impacts from operation

3.6.2.1 Change or reduction in visual quality

The addition of a BESS would not change or reduce the nature of visual quality impacts associated with the operation of facilities without a BESS. The BESS would not create a higher level of visual contrast when viewed together with other ancillary structures that would also be a part of the larger solar facility and share an industrial appearance.

Depending on the location and size of facility sites and visual characteristics of the operations activities, impacts from facility operations would range from **less than significant impacts to potentially significant adverse impacts** on visual quality. Section 3.6.4 presents actions that could avoid or reduce impacts of a utility-scale solar facility with a BESS on the visual environment.

3.6.2.2 New source of light or glare

The addition of a BESS would not change the sources of light and glare of a solar energy facility. Through compliance with laws and permits and with implementation of actions that could avoid and reduce impacts, construction and decommissioning activities would likely result in **less than significant impacts** related to light or glare.

3.6.3 Impacts from decommissioning

3.6.3.1 *Change or reduction in visual quality*

Decommissioning activities for a facility with a co-located BESS would be similar to construction activities (Section 3.6.1.1). Decommissioning of a solar energy facility with a co-located BESS would generally involve the same activities described in Sections 3.4 and 3.5. The addition of decommissioning the BESS would involve similar activities to the needs of removal of other support facilities and infrastructure.

Depending on the location and size of facility sites and visual characteristics of the decommissioning activities, impacts from facility decommissioning would range from **less than significant impacts** to **potentially significant adverse impacts** on visual quality. Decommissioning impacts would last until restoration of the site is complete.

3.6.3.2 *New source of light or glare*

The impacts of decommissioning and site restoration activities would be similar to those identified for construction. Decommissioning of a solar energy facility with a co-located BESS would generally involve the same activities described in Sections 3.4 and 3.5. The addition of decommissioning the BESS would involve similar activities to the needs of removal of other support facilities and infrastructure.

Through compliance with laws and permits and with implementation of actions that could avoid and reduce impacts, decommissioning activities would likely result in **less than significant impacts** related to light or glare.

3.6.4 Actions to avoid and reduce impacts

The measures to minimize, reduce, and/or mitigate aesthetic and visual quality impacts for facilities with a BESS would be the same as those in Section 3.4.4, including the measures related to siting and design that could also be applied to the BESSs. Refer to Section 3.4.4 for a full discussion of those measures.

3.6.5 Unavoidable significant adverse impacts

Some utility-scale solar energy facilities with co-located BESSs may result in **potentially significant and unavoidable adverse impacts** on visual quality, depending on location and design. Determining if mitigation options would reduce or eliminate impacts below significance would be dependent on the specific project and site and local regulations and plans.

3.7 Solar energy facilities that include agricultural land uses (agrivoltaic) (Alternative 4)

This section describes potential impacts on aesthetics and visual quality due to the construction, operation, and decommissioning of a solar facility that includes agricultural uses (an agrivoltaic facility).

3.7.1 Impacts from construction

The construction activities for solar facilities with co-located agricultural uses would be largely the same as those for facilities without agriculture. In addition to the approach of modifying/raising solar arrays, it may also be possible to spread the arrays more widely across a site, allowing more space among the structures for agricultural uses, or locate agricultural use and solar utility components in different portions of a site. A solar facility may be located on lands where there is already existing agricultural activity, with or without changing the type of agricultural activity, or a solar facility could add a new agricultural use to a site.

3.7.1.1 *Change or reduction in visual quality*

Construction of facilities with co-located agriculture on existing agricultural land would be similar to the construction of facilities without co-located agriculture. Some construction activities, such as earthmoving, may appear similar to certain cultivating or other farming activities that also require use of large mechanical equipment. Construction of facilities with co-located agriculture in other areas would generally be the same as for facilities without agriculture. Considering the size of facility sites and visual characteristics of the construction activities, impacts attributable to construction of facilities with co-located agriculture would range from **less than significant impacts** to **potentially significant adverse impacts** on visual quality. Section 3.7.4 presents actions that could avoid or reduce impacts of utility-scale solar energy facilities on the visual environment.

3.7.1.2 *New source of light or glare*

Sources of light and glare during construction would be largely the same as those for facilities without co-located agriculture. Development of agricultural areas are anticipated not to involve nighttime lighting, except for emergency or other episodic use.

Because construction activities for a facility with co-located agriculture would be largely the same as those for facilities without co-located agriculture, additional sources of glare are not anticipated. Agricultural activities that occur currently on a facility site could create sources of glare, much like construction activities; however, these sources would not remain in any one fixed location for the entire duration of construction.

Through compliance with laws and permits and with implementation of actions that could avoid and reduce impacts, construction activities would likely result in **less than significant impacts** related to light or glare.

3.7.2 Impacts from operation

3.7.2.1 *Change or reduction in visual quality*

The co-location of a solar energy facility with agricultural land uses would still change or reduce the visual nature of a site to a solar energy development. For sites that are already in agricultural use, the presence of a solar facility where none existed would change the visual character of the site. For sites not already in agricultural use, the conversion to agricultural use, in addition to the presence of a solar facility, would also change the visual character of the site.

Depending on the location and size of facility sites and visual characteristics of the operations activities, impacts from facility operations would range from **less than significant impacts** to **potentially significant adverse impacts** on visual quality. Section 3.7.4 presents actions that could avoid or reduce impacts of utility-scale solar facilities on the visual environment.

3.7.2.2 *New source of light or glare*

The types of light and glare during operation of a solar energy facility with agricultural land uses would largely be the same as facilities without agriculture. For the most part, the lighting and glare impacts would be limited by design considerations, operational use, or distance from receptors and would be limited to the solar energy portion of the facilities, with the potential for periodic night lighting for emergency or other episodic use related to agricultural uses.

Through compliance with laws and permits and with implementation of actions that could avoid and reduce impacts, construction and decommissioning activities would likely result in **less than significant impacts** related to light or glare.

3.7.3 Impacts from decommissioning

3.7.3.1 *Change or reduction in visual quality*

Decommissioning activities for a solar energy facility with co-located agricultural use would be similar to construction activities. If decommissioning activities would only apply to the solar facility components but agricultural activities would continue, extant agricultural activities would need to halt temporarily to allow the decommissioning work to commence. The presence of ongoing agricultural activities following decommissioning of energy facilities may reduce the visual contrast prior to maturation of revegetated areas as compared to facilities without agricultural uses.

Depending on the location and size of facility sites and visual characteristics of the decommissioning activities, impacts from facility decommissioning would range from **less than significant impacts** to **potentially significant adverse impacts** on visual quality. Decommissioning impacts would last until restoration of the site is complete.

3.7.3.2 *New source of light or glare*

The impacts of decommissioning and site restoration activities would be similar to those identified for construction. Decommissioning of a solar energy facility with co-located

agricultural uses would generally involve the same activities described in Sections 3.4 and 3.5, is not likely to include nighttime activities, and would not create a source of lighting or introduce light pollution that would impact nighttime views. It is assumed that agricultural activities would be temporarily halted to allow decommissioning to occur but may continue after solar facility decommissioning. However, this would not be expected to add sources of light or glare that had not existed before.

Through compliance with laws and permits and with implementation of actions that could avoid and reduce impacts, decommissioning activities would likely result in **less than significant impacts** related to light or glare.

3.7.4 Actions to avoid and reduce impacts

The measures to minimize, reduce, and/or mitigate aesthetic and visual quality impacts for facilities with agricultural uses would be the same as those in Section 3.4.4, including the potential retaining or restoration of agricultural lands. Refer to Section 3.4.4 for a full discussion of those measures.

3.7.5 Unavoidable significant adverse impacts

Some utility-scale solar energy facilities with agricultural use may result in **potentially significant and unavoidable adverse impacts** on visual quality, depending on location and design. Determining if mitigation options would reduce or eliminate impacts below significance would be dependent on the specific project and site and local regulations and plans.

3.8 No Action Alternative

Under the No Action Alternative, city, county, and state agencies would continue to conduct environmental review and permitting for utility-scale solar development under existing state and local laws on a project-by-project basis. The potential impacts from facilities developed under the No Action Alternative would be similar to the impacts for the types of facilities described above for construction, operations, and decommissioning, depending on facility size and design. Facilities could result in a **less than significant to potentially significant adverse impact** on aesthetic and visual resources and would result in a **less than significant impact** attributable to light and glare.

4 References

- Anchor QEA, 2024a. *Tribal Rights, Interests, and Resources Report for Programmatic Environmental Impact Statement on Utility-Scale Solar Energy Facilities in Washington State*. Prepared for the Washington State Department of Ecology. September 2024.
- Anchor QEA, 2024b. *Biological Resources Report for Programmatic Environmental Impact Statement on Utility-Scale Solar Energy Facilities in Washington State*. Prepared for the Washington State Department of Ecology. September 2024.
- Anchor QEA, 2024c. *Land Use Resource Report for Programmatic Environmental Impact Statement on Utility-Scale Solar Energy Facilities in Washington State*. Prepared for the Washington State Department of Ecology. September 2024.
- BLM (Bureau of Land Management), 2024. *Draft Programmatic Environmental Impact Statement for Utility-Scale Solar Energy Development*. Volumes I and II. DOI-BLM-HQ-3000-2023-0001-RMP-EIS. U.S. Department of the Interior. January 2024.
- ESA (Environmental Science Associates), 2024a. *Historic and Cultural Resources Report for Programmatic Environmental Impact Statement on Utility-Scale Solar Energy Facilities in Washington State*. Prepared for the Washington State Department of Ecology. September 2024.
- ESA, 2024b. *Recreation Resource Report for Programmatic Environmental Impact Statement on Utility-Scale Solar Energy Facilities in Washington State*. Prepared for the Washington State Department of Ecology. September 2024.
- FAA (Federal Aviation Administration), 2020. *Advisory Circular, Obstruction Marking and Lighting*. AC 70/7460-1M. November 16, 2020.
- National Wild and Scenic Rivers System, 2024. "Washington." Accessed March 4, 2024. Available at: <https://www.rivers.gov/washington>.
- Shields, M., 2010. *PV Systems: Low Levels of Glare and Reflectance vs. Surrounding Environment*. Available at: https://conservationtools-production.s3.amazonaws.com/library_item_files/1684/1891/wp-pv-systems-low-levels-glare-reflectance-vs-surrounding-environment.pdf?AWSAccessKeyId=AKIAIQFJLILYGVD4AMQ&Expires=1613070138&Signature=AmwYw3XmOwKspsy2QnaOIVHWiyyw%3D.
- USDOE and USFWS (U.S. Department of Energy, Western Area Power Administration; U.S. Fish and Wildlife Service), 2015. *Upper Great Plains Wind Energy Programmatic Environmental Impact Statement*. DOE/EIS-0408. April 2015.

USDOT (U.S. Department of Transportation, Federal Highway Administration), 2024. *National Scenic Byways & All-American Roads, Washington*. Accessed March 4, 2024. Available at: <https://fhwaapps.fhwa.dot.gov/bywaysp/state/WA/map>.