



Appendix C: Environmental Justice Technical Resource Report

**For Programmatic Environmental Impact
Statement on Utility-Scale Onshore Wind
Energy Facilities in Washington State**

By
Anchor QEA

For the
Shorelands and Environmental Assistance Program

Washington State Department of Ecology
Olympia, Washington

June 2025, Publication 25-06-003

Table of Contents

Acronyms and Abbreviations List.....	4
Summary.....	5
Crosswalk with Environmental Justice Technical Resource Report for Utility-Scale Solar Energy ..	6
1 Introduction	7
1.1 Resource description	7
1.2 Regulatory context	8
2 Methodology.....	10
2.1 Study area	10
2.2 Technical approach	12
2.3 Impact assessment approach.....	13
3 Technical Analysis and Results	15
3.1 Overview	15
3.2 Affected environment	15
3.2.1 People of color populations and low-income populations	15
3.2.2 Overburdened community areas.....	20
3.3 Potentially required permits and approvals.....	23
3.4 Utility-scale onshore wind facilities.....	23
3.4.1 Impacts from construction and decommissioning.....	23
3.4.2 Impacts from operation	25
3.4.3 Measures to avoid, reduce, and mitigate impacts.....	27
3.4.4 Unavoidable significant adverse impacts.....	31
3.5 Onshore wind facilities with battery energy storage systems	32
3.5.1 Impacts from construction, operations, and decommissioning	32
3.5.2 Measures to avoid, reduce, and mitigate impacts.....	34
3.5.3 Unavoidable significant adverse impacts.....	34
3.6 Onshore wind facilities that include agricultural uses	34
3.6.1 Impacts from construction, operations, and decommissioning	34
3.6.2 Measures to avoid, reduce, and mitigate impacts.....	35
3.6.3 Unavoidable significant adverse impacts.....	35
3.7 No Action Alternative	35
4 References.....	37

List of Figures and Tables

Figures

Figure 1. Onshore Wind Energy Facilities PEIS – geographic scope of study	11
Figure 2a. Areas with people of color populations that overlap the study area – western Washington	16
Figure 2b. Areas with people of color populations that overlap the study area – eastern Washington	17
Figure 3a. Areas with low-income populations that overlap the study area – western Washington	18
Figure 3b. Areas with low-income populations that overlap the study area – eastern Washington	19
Figure 4a. Overburdened community areas that overlap the study area – western Washington	21
Figure 4b. Overburdened community areas that overlap the study area – eastern Washington	22

Tables

Table 1. Applicable laws, plans, and policies	9
Table 2. Potentially significant impact determinations that could affect people, by resource area ..	14

List of Attachments

Appendix C, Attachment 1. Census Tracts Overlapping Study Area and Thresholds for People of Color Populations, Low-Income Populations, and Overburdened Community Areas

Acronyms and Abbreviations List

ACS	American Community Survey
BESS	battery energy storage system
CEJST	Climate and Economic Justice Screening Tool
EHD	Environmental Health Disparities
DAHP	Washington State Department of Archaeology and Historic Preservation
LEP	limited English proficiency
PEIS	Programmatic Environmental Impact Statement
RCW	Revised Code of Washington

Summary

This technical resource report describes the environmental justice conditions in the study area. It also describes the regulatory context, potential impacts, and measures to avoid, reduce, and mitigate impacts.

Revised Code of Washington 43.21C.535 requires this Programmatic Environmental Impact Statement (PEIS) to consider environmental justice and overburdened communities. This PEIS considers whether potential environmental impacts disproportionately affect people of color populations and low-income populations. The report also identifies where overburdened community areas are located in the study area. An overburdened community is defined as a geographic area where highly impacted communities and vulnerable populations face multiple combined environmental harms and health impacts.

Environmental justice impacts described in this technical resource report are summarized as follows:

- Onshore wind energy development could have **disproportionate impacts** on historic and cultural resources, Tribes, and Tribal communities. The impact assessment and determinations of significance or non-significance would be determined through engagement and consultation with potentially affected Tribes and the Washington Department of Archaeology and Historic Preservation at the project level. Impacts to biological resources such as plants and animals that provide important subsistence and medicinal resources to Tribal communities would be determined with engagement and in consultation with each potentially affected Tribe at the project level.
- If a facility requires a conversion of natural resource lands of long-term commercial significance or conflicts with the rural character of an area containing a population of people of color or low-income population, this would potentially result in a **significant and unavoidable disproportionate impact**.
- Depending on site location and facility design, long-term changes or reductions in visual quality could potentially result in a **significant and unavoidable disproportionate impact** on people of color populations or low-income populations.
- If activities associated with a facility increase the risk of wildfires or require a large fire response in remote locations with limited response capabilities or there are other unique aspects of a facility site that affect fire response, this would potentially result in a **significant and unavoidable disproportionate impact** on people of color populations or low-income populations.

Crosswalk with Environmental Justice Technical Resource Report for Utility-Scale Solar Energy

Two PEISs are being released at the same time, one for utility-scale solar energy facilities and one for utility-scale onshore wind energy facilities. This crosswalk identifies the areas with substantial differences between the environmental justice technical resource reports for each PEIS.

Utility-Scale Solar Energy PEIS	Utility-Scale Onshore Wind Energy PEIS (this document)
<ul style="list-style-type: none">No substantial differences	<ul style="list-style-type: none">No substantial differences

1 Introduction

This report describes environmental justice considerations and overburdened community areas within the study area and assesses probable impacts associated with types of facilities (alternatives) and a No Action Alternative. Chapter 2 of the State Environmental Policy Act Programmatic Environmental Impact Statement (PEIS) provides a description of the types of facilities evaluated (alternatives).

This section provides an overview of the communities evaluated in this technical resource report and lists relevant regulations that contributed to the evaluation of potential impacts.

1.1 Resource description

The analysis in this report covers environmental justice considerations for the affected environment, potential impacts, and potential mitigation measures. Specifically, this includes identification of resources and areas potentially affected by the facilities and whether the area may include people of color populations or low-income populations, or whether it is an overburdened community area.

Revised Code of Washington (RCW) 70A.02.010(8) defines environmental justice as “the fair treatment and meaningful involvement of all people regardless of race, color, national origin, or income with respect to the development, implementation, and enforcement of environmental laws, rules, and policies. Environmental justice includes addressing disproportionate environmental and health impacts in all laws, rules, and policies with environmental impacts by prioritizing vulnerable populations and overburdened communities, the equitable distribution of resources and benefits, and eliminating harm.”

An “overburdened community” is defined in RCW 70A.02.010(11) as “a geographic area where vulnerable populations face combined, multiple environmental harms and health impacts, and includes, but is not limited to, highly impacted communities as defined in RCW 19.405.020.” RCW 19.405.020 defines “highly impacted community” as “a community designated by the department of health based on cumulative impact analyses in RCW 19.405.140 or a community located in census tracts that are fully or partially on ‘Indian country’ as defined in 18 U.S.C. Sec. 1151.0.”

Onshore wind energy development could result in impacts to communities that are already overburdened by environmental impacts and could further affect community health and wellbeing. Onshore wind energy development could have disproportionate impacts on Tribes and Tribal communities. The Washington State Department of Ecology is offering consultation with potentially affected federally recognized Tribes as part of the PEIS process, and potential impacts to Tribes are discussed in the *Tribal Rights, Interests, and Resources Technical Report* (Appendix B) and are not included in this report.

In addition, the following resources could have impacts that overlap with impacts to environmental justice or overburdened communities. Impacts on these resources are reported in their respective technical resource reports, as follows:

- **Tribal rights, interests, and resources:** Tribal lands are part of the overburdened community area definition of this report. Impacts to Tribal rights, interests, and resources are described in the *Tribal Rights, Interests, and Resources Technical Report* (Appendix B).
- **Biological resources:** The *Biological Resources Technical Report* (Appendix G) addresses impacts to biological resources. Impacts to biological resources could also affect Tribes.
- **Environmental health and safety:** The *Environmental Health and Safety Technical Resource Report* (Appendix I) addresses impacts associated with hazardous materials, health and safety risk, and wildfire risk.
- **Noise and vibration:** The *Noise and Vibration Technical Resource Report* (Appendix J) addresses impacts associated with noise and vibration, which could affect nearby populations.
- **Land use:** The *Land Use Technical Resource Report* (Appendix K) addresses impacts to land use including potential land use conversion and rural character.
- **Aesthetics and visual quality:** The *Aesthetics/Visual Quality Technical Resource Report* (Appendix L) addresses impacts to aesthetics and visual quality that could be noticeable to nearby populations.
- **Recreation:** Recreational resources are evaluated in the *Recreation Resources Technical Report* (Appendix M).
- **Historic and cultural resources:** The potential impacts on historic and cultural resources are considered in the *Historic and Cultural Resources Technical Report* (Appendix N).
- **Public services and utilities:** The *Public Services and Utilities Technical Resource Report* (Appendix P) addresses impacts to emergency response, public schools, and utilities.

1.2 Regulatory context

Table 1 provides a list of relevant federal and state laws and policies that informed the evaluation of potential environmental justice impacts. Additional laws, plans, and policies could apply depending on the local jurisdiction in which a facility is proposed.

Table 1. Applicable laws, plans, and policies

Law or policy	Description
Federal	
Executive Order 12898, Environmental Justice	Directs federal agencies to make achieving environmental justice part of their mission by identifying and addressing, as appropriate, disproportionately high and adverse human health or environmental effects of its programs, policies, and activities on minority populations and low-income populations. Executive Order was rescinded as of January 2025.
Executive Order 14096, Revitalizing Our Nation's Commitment to Environmental Justice for All (Justice40)	Requires federal agencies to incorporate environmental justice into their missions and to examine impacts on overburdened communities. Executive Order was rescinded as of January 2025.
Title VI of the Civil Rights Act of 1964 (United States Code 42.2000d), as amended by the Civil Rights Restoration Act of 1987	Prohibits discrimination based on race, color, and national origin in programs and activities receiving federal financial assistance.
Executive Order 13166, Improving Access to Services for Persons with Limited English Proficiency (LEP)	Requires federal agencies to examine the services they provide, identify any need for services to those with LEP, and develop and implement a system to provide those services so LEP persons can have meaningful access to them. Executive Order was rescinded as of January 2025.
State	
Chapter 70A.02 Revised Code of Washington, Environmental Justice (Healthy Environment for All Act)	Agencies identified in the law must incorporate environmental justice into agency strategic plans and budget development processes, conduct environmental justice assessments, and report on environmental justice implementation.
Washington State Office of the Chief Information Officer Policy 188	Intended to assist the State of Washington in meeting its obligations under state and federal law to provide reasonable accommodation to employees and provide persons with disabilities an equal opportunity to participate in, and enjoy the benefits of, services, programs, or activities conducted by the state.
Executive Order 05-03	Directs all state agencies to adopt the principles and practices of Plain Talk (i.e., reader-friendly language).

2 Methodology

This section discusses the geographic area that will be evaluated for potential impacts from utility-scale onshore wind energy facilities, provides an overview of the process for evaluating potential impacts on people of color populations and low-income populations, and describes the process for determining the potential impacts and potential mitigation. This section also describes how overburdened community areas were identified within the study area.

2.1 Study area

The study area includes the PEIS geographic scope of study for utility-scale onshore wind energy facilities (Figure 1), and this report analyzes potential impacts from facilities sited within this area. The study area includes all census tracts that overlap the geographic scope of study. A total of 358 census tracts overlap the study area. Census tracts are subdivisions of a county that generally have a population size between 1,200 and 8,000 people, with an average of about 4,000 people. The primary purpose of census tracts is to provide a stable set of geographic units for the presentation of statistical data (U.S. Census Bureau 2022). Census tracts in rural areas may cover large geographies and thus may not accurately represent the portions of the population that reside close to project sites. Project-level analyses will take this into consideration, and project-level study areas may rely on smaller units of measurement, such as census block groups.

The PEIS geographic scope of study includes various federal, state, and locally managed lands; however, Tribal reservation lands; national parks, wilderness areas, and wildlife refuges; state parks; and areas within cities and urban growth areas were excluded from the geographic scope of study for facilities considered in the PEIS.

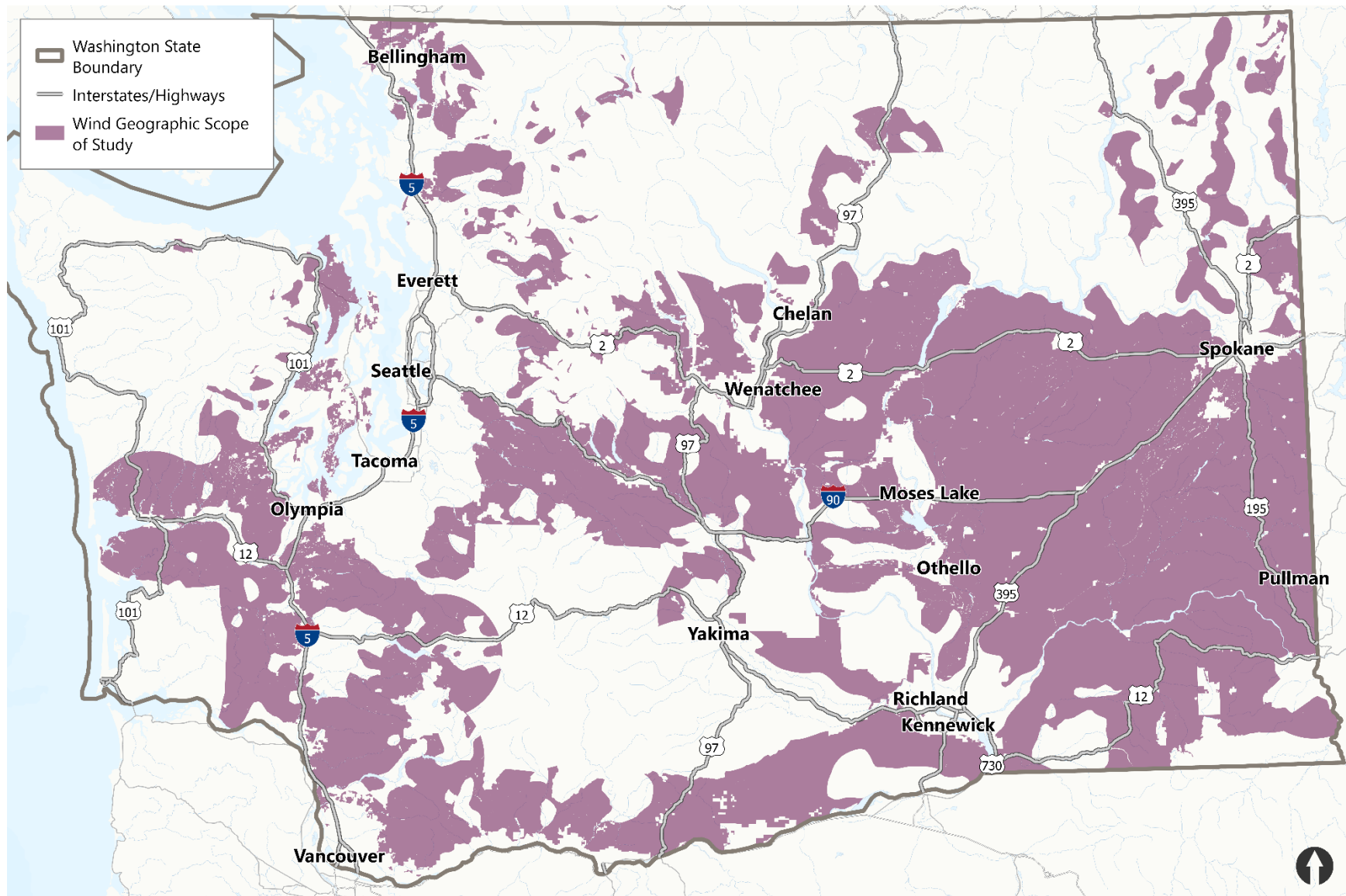


Figure 1. Onshore Wind Energy Facilities PEIS – geographic scope of study

2.2 Technical approach

Data were gathered and analyzed to determine whether people of color populations, low-income populations, or overburdened community areas are present within the study area.

This analysis used 5-year population estimates from the U.S. Census Bureau 2018–2022 American Community Survey (ACS) to determine the people of color populations or low-income populations within the study area. Data from each census tract overlapping the study area were compared to the State of Washington as a whole as follows:

- If the percentage of people of color in a census tract is greater than the state average (34%), that census tract was identified as “a people of color population.” People of color were defined as all people who identify in the census as a race other than white alone and/or list their ethnicity as Hispanic or Latino.
- Census tracts with a percentage of low-income persons greater than the state average (23%) were identified as “low-income populations.” Low-income persons were defined as individuals living in households with an income at or below twice the federal poverty level.

While this methodology captures people who reside in the study area, it is acknowledged that additional people of color populations or low-income populations who travel to the study area for work or other reasons may also be affected by construction, operation, and decommissioning of facilities. An example of people who may travel to the study area for work is farmworkers. Farms are concentrated in the central and eastern portions of the state, which overlap with large portions of the wind study area.

Additionally, overburdened community areas were identified using data¹ from the [Overburdened Communities of Washington State dataset](#) (OFM 2024). This dataset integrates data from the following three sources:

- Washington Environmental Health Disparities (EHD) Map (WDOH 2024). The Washington Tracking Network combines information on a variety of environmental and public health factors to produce a map that ranks census tracts in the state based on the cumulative environmental health impacts they face. The indicators that factor into the cumulative environmental health impact score fall into four categories: environmental exposures to emissions and other toxins; environmental effects, such as proximity to hazardous sites; sensitive populations; and socioeconomic factors. Census tracts are ranked on a scale of 1 through 10, with a higher ranking representing a higher level of burden compared to the rest of the state.

¹ Census tract data used to identify overburdened community areas were from the 2010 census, whereas data on people of color populations and low-income populations were identified using census tract boundaries from the 2020 census in the 2022 U.S. Census Bureau ACS 5-year estimate data. Due in part to the discrepancies in census tract numbers and areas, tables and maps of people of color populations and low-income populations and overburdened community areas are presented separately.

- The federal Climate and Economic Justice Screening Tool (CEJST; CEQ 2024)² (which has since been removed). CEJST represents data indicators in eight categories: climate change, energy, health, housing, legacy pollution, transportation, water and wastewater, and workforce development. The tool uses this information to identify communities that the CEJST defines as disadvantaged because they are overburdened and underserved.
- Tribal lands maps (as recognized by the Bureau of Indian Affairs)

A census tract was considered an overburdened community area if it met any of the following three criteria:

- Census tracts that have a ranking of 9 or 10 in the EHD Map
- Census tracts identified as disadvantaged by CEJST
- Census tracts that are wholly or partially overlapped by any Tribal lands

The specific methodology for identifying people of color populations, low-income populations, and overburdened community areas during project-level review should be coordinated with the lead agency for the facility's environmental review.

2.3 Impact assessment approach

The PEIS analyzes a timeframe of up to 20 years of potential facility construction and up to 30 years of potential facility operations (totaling up to 50 years into the future). The determinations of potential impacts and potential mitigation measures were reviewed for each element of the environment analyzed in the PEIS for each type of facility. Only resources that could affect people were considered for this appendix. Potential impacts that are less than significant are not anticipated to result in disproportionately adverse effects on people of color populations or low-income populations and are not discussed in this technical resource report.

Potentially significant adverse environmental impacts were overlaid with census tracts with people of color populations and low-income populations to determine the relative type and severity of effects and determine the potential for environmental impacts to disproportionately affect those populations. This section uses analyses described in other PEIS technical resource reports and considers potential impacts identified in those reports that could affect people. Table 2 provides a summary of the impact determinations for each resource area and identifies the reference technical resource report.

² The data for this report were obtained from the Overburdened Communities of Washington State dataset (OFM 2024).

Table 2. Potentially significant impact determinations that could affect people, by resource area

Resource area	Impact determination	Technical resource report reference
Land Use	Potentially significant and unavoidable	Appendix K
Aesthetics and Visual Quality	Potentially significant and unavoidable	Appendix L
Historic and Cultural Resources	To be made in consultation with potentially affected federal Tribes and the Washington State Department of Archaeology and Historic Preservation during project-level reviews	Appendix N
Tribal Rights, Interests, and Resources	To be made in consultation with potentially affected federal Tribes during project-level reviews	Appendix B
Biological Resources	Potentially significant and unavoidable	Appendix G
Public Services and Utilities	Potentially significant and unavoidable	Appendix P
Environmental Health and Safety	Potentially significant and unavoidable	Appendix I
Noise and Vibration	Potentially significant	Appendix J
Recreation	Potentially significant	Appendix M

3 Technical Analysis and Results

3.1 Overview

This section describes the population demographics within the study area and discusses probable impacts on populations within the study area from the facility types evaluated in the PEIS. This section also identifies overburdened community areas. These areas may require additional analysis for specific facilities during project-level review.

The analysis considered mitigation measures to avoid, minimize, or reduce the identified impact below the level of significance. If facility impacts could be mitigated, they are not anticipated to result in disproportionate impacts on people of color populations or low-income populations.

3.2 Affected environment

The affected environment represents existing conditions at the time this study was prepared.

3.2.1 People of color populations and low-income populations

As described in Section 2.2, U.S. Census Bureau 2018–2022 ACS data were used to determine census tracts with people of color populations or low-income populations that overlap the study area. Data from each census tract overlapping the study area were compared to the State of Washington as a whole. If the percentage of people of color in a census tract is greater than the state average, that census tract was identified as a people of color population. The census tracts that overlap the study area and that are a people of color population are depicted in Figures 2a and 2b and listed in Table 1-1 of Attachment 1. Of the 358 census tracts that overlap the study area, 42 (or 12%) are identified as a people of color population.

Similarly, census tracts with a percentage of low-income persons greater than the state average (23%) were identified as low-income populations. The census tracts with low-income populations that overlap the study area are depicted in Figures 3a and 3b and listed in Table 1-2 of Attachment 1. Of the 358 census tracts that overlap the study area, 188 (or 53%) are identified as a low-income population.

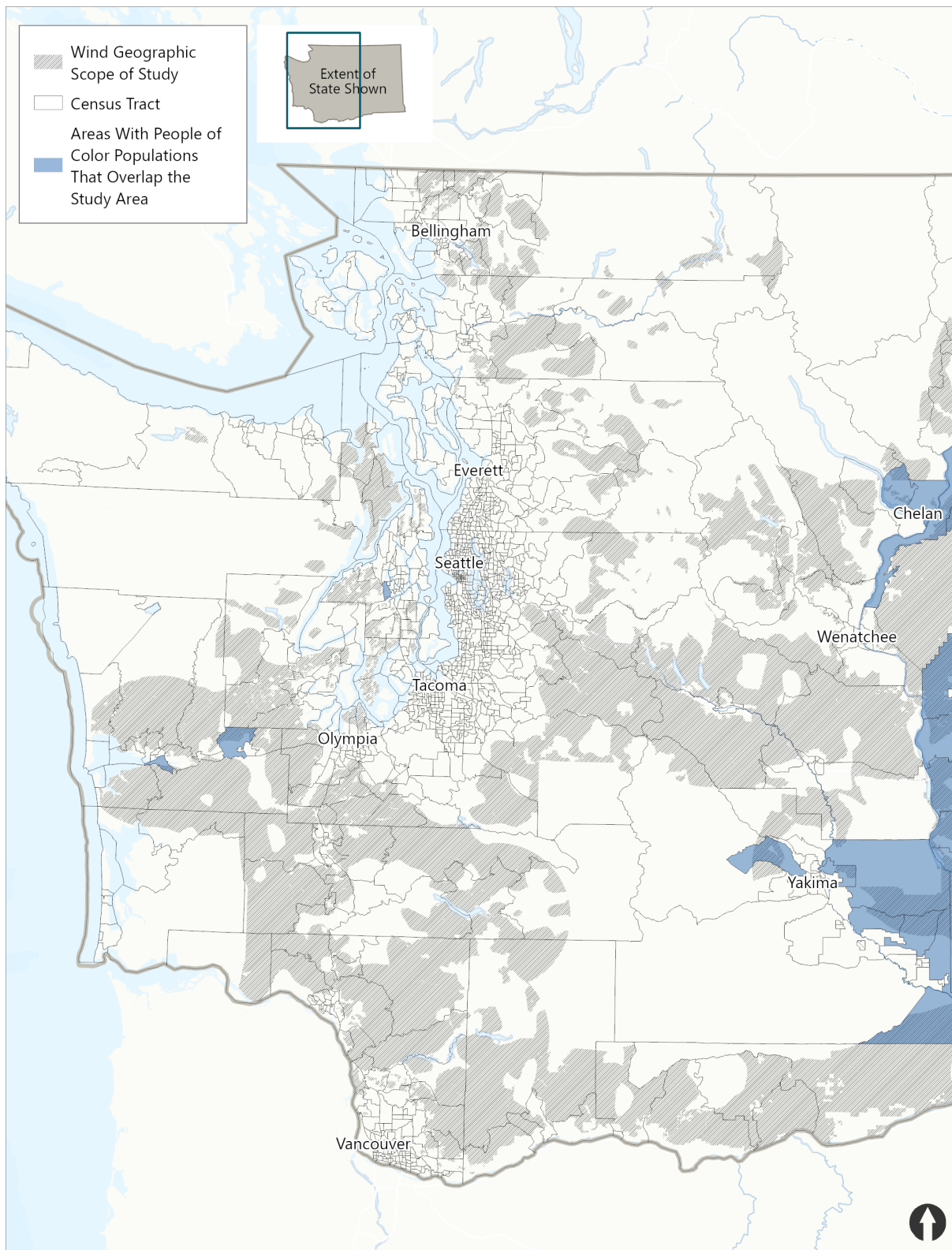


Figure 2a. Areas with people of color populations that overlap the study area – western Washington

Data source: ACS 2022

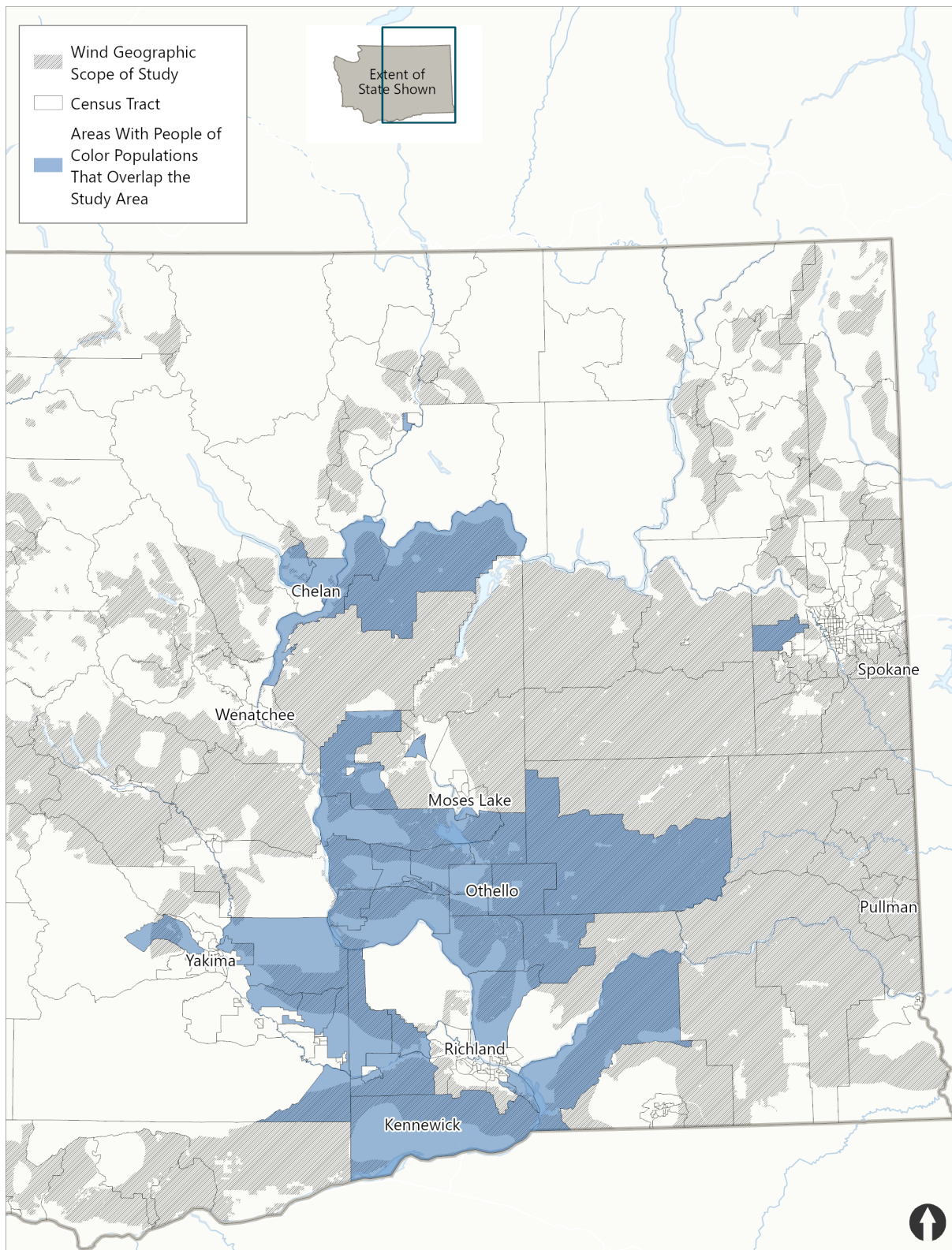


Figure 2b. Areas with people of color populations that overlap the study area – eastern Washington

Data source: ACS 2022

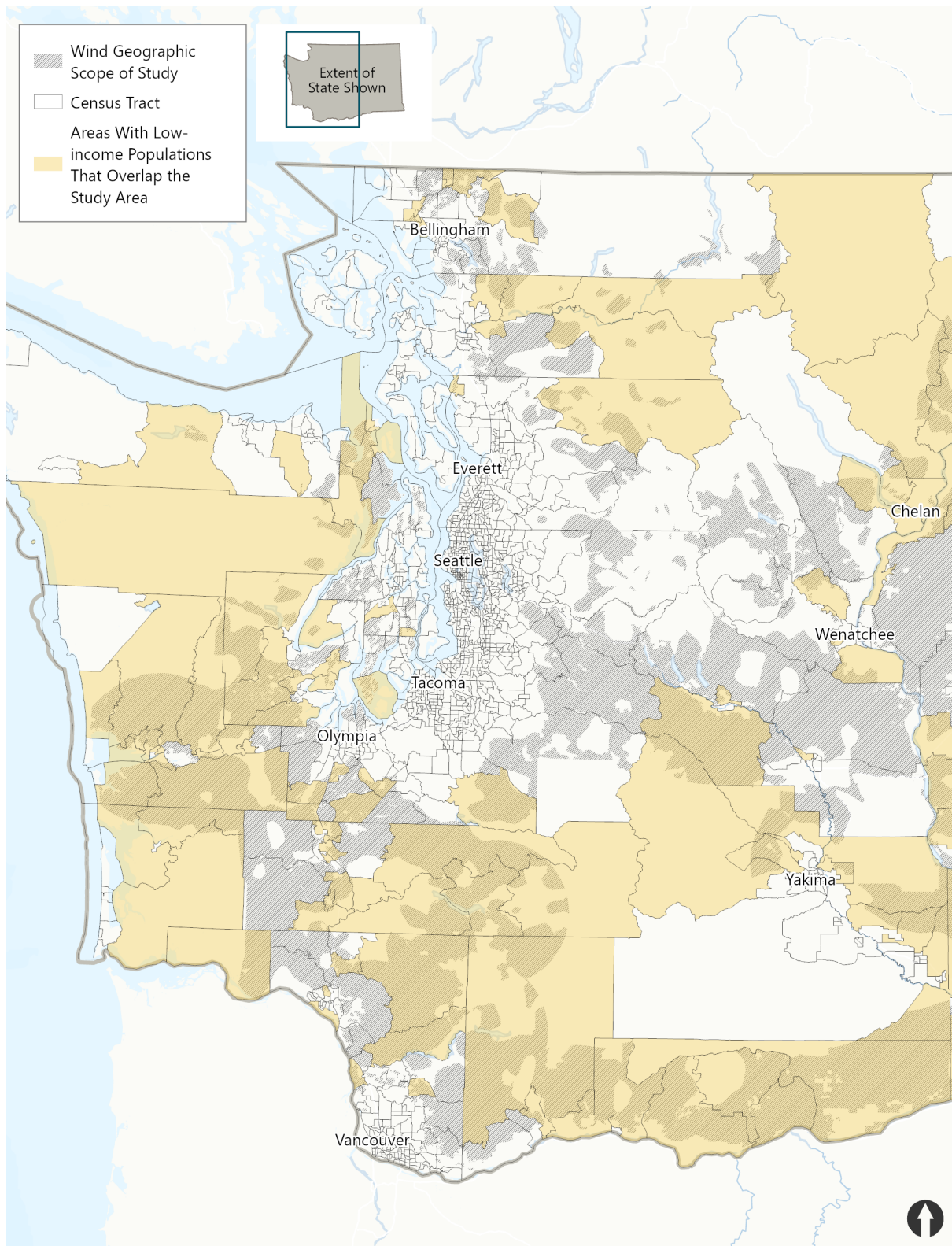


Figure 3a. Areas with low-income populations that overlap the study area – western Washington

Data source: ACS 2022

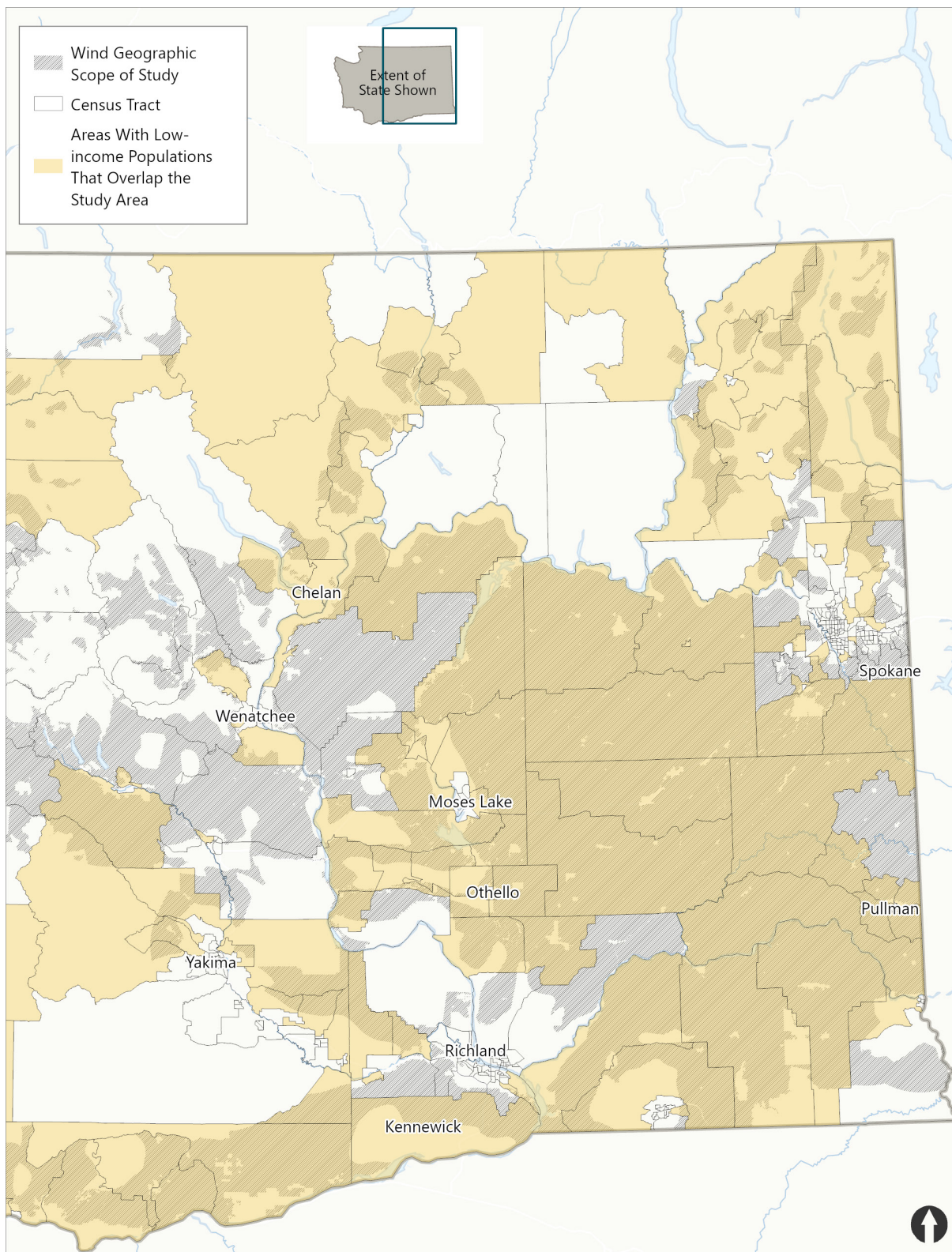


Figure 3b. Areas with low-income populations that overlap the study area – eastern Washington
Data source: ACS 2022

3.2.2 Overburdened community areas

The census tracts overlapping the study area were evaluated for whether or not they meet the criteria described in Section 2.2 to be considered in an overburdened community area. Of the 302 census tracts that overlap the study area,³ a total of 60 (or 20%) were identified as an overburdened community area. These census tracts are depicted in Figures 4a and 4b and are listed in Table 1-3 of Attachment 1.

As depicted in Figures 4a and 4b, overburdened community areas are located throughout the study area. In general, the overburdened community areas identified in the study are primarily rural areas.⁴

³ Census-tract data used to identify overburdened community areas were from the 2010 census, which has some differences in census-tract numbers, boundaries, and areas compared to census-tract boundaries from the 2020 census. The 2022 U.S. Census Bureau ACS 5-year estimate data were used to identify people of color and low-income populations and other totals of census tracts in this report.

⁴ The Washington State Growth Management Act designates rural areas as lands outside of the designated urban areas and not in long-term resource use.

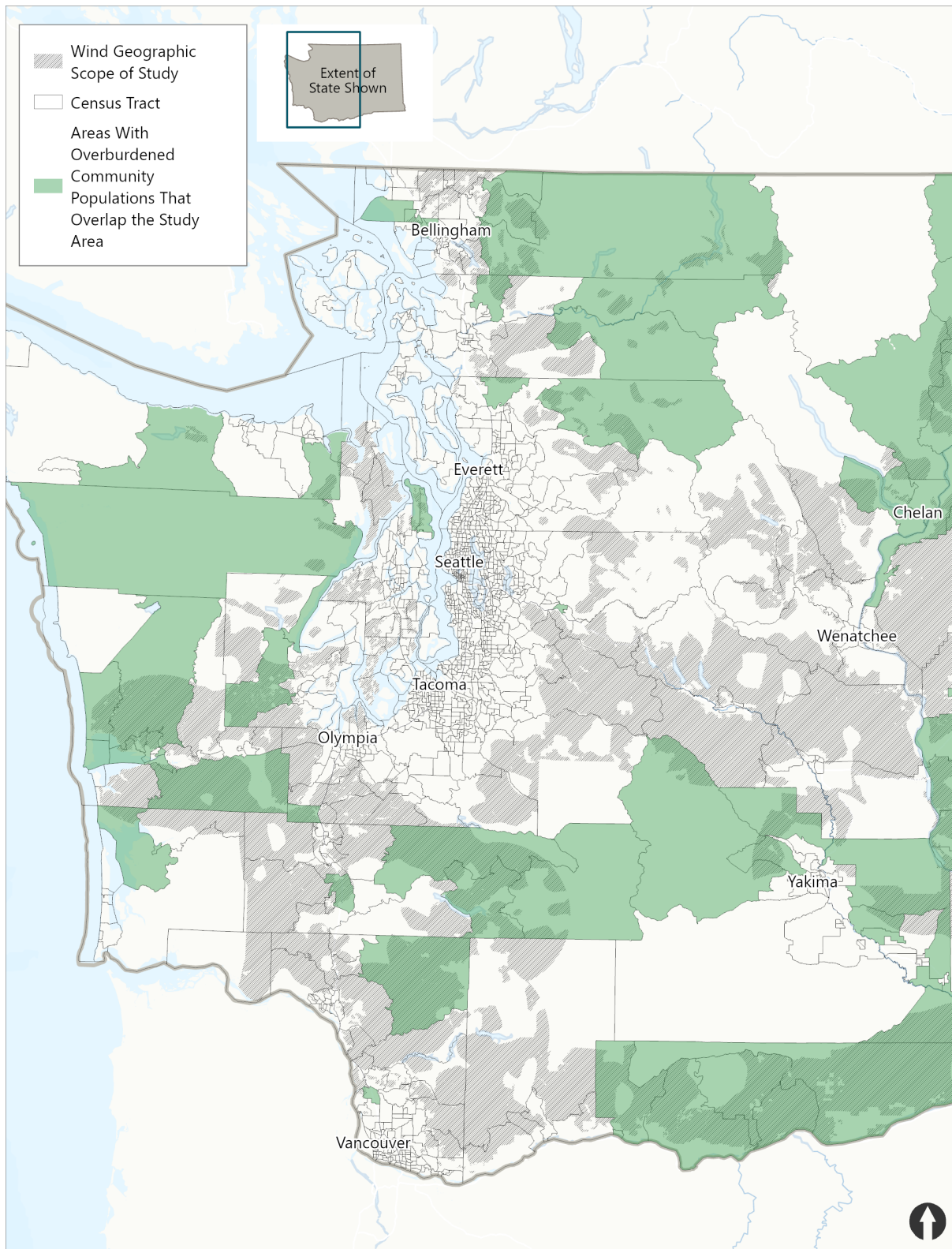


Figure 4a. Overburdened community areas that overlap the study area – western Washington

Source: OFM 2024

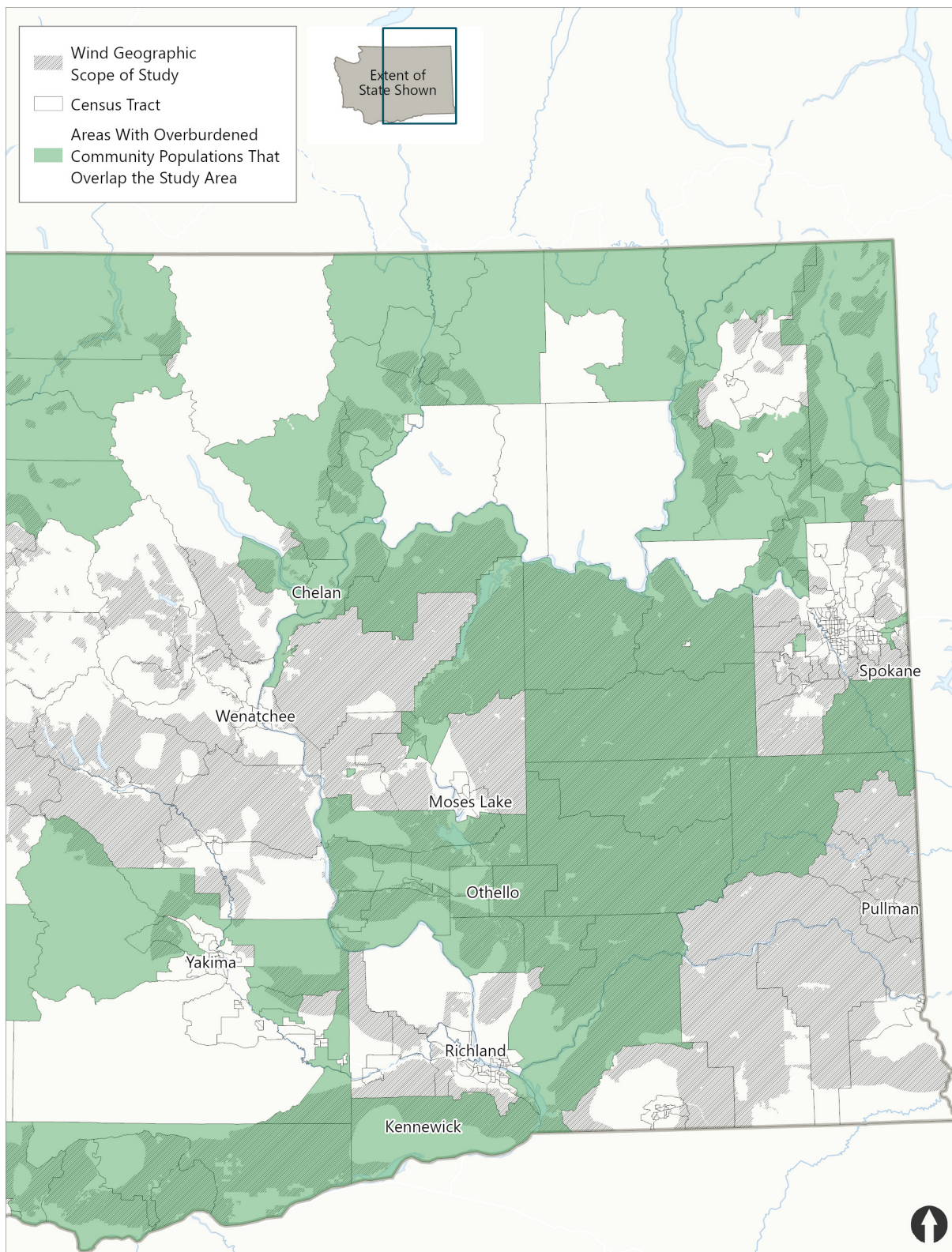


Figure 4b. Overburdened community areas that overlap the study area – eastern Washington

Source: OFM 2024

3.3 Potentially required permits and approvals

There are no specific permit requirements that pertain to environmental justice. Projects would need to comply with local plans, such as comprehensive plans and sustainability plans, which may include environmental justice elements.

3.4 Utility-scale onshore wind facilities

This section describes potential environmental justice impacts due to the construction, operation, and decommissioning of utility-scale onshore wind energy facilities.

3.4.1 Impacts from construction and decommissioning

3.4.1.1 *Land use*

Construction and decommissioning of utility-scale facilities has the potential to result in impacts such as increased dust, noise, traffic, and visual changes that could affect adjacent existing land uses and people. People most likely to be affected by these impacts are those living in nearby areas (if there are any nearby residential land uses) or those whose work requires them to be near the construction area for long periods (depending on specific adjacent land uses). The impacts of converting property to a utility-scale onshore wind facility would depend on the existing use of the site. Nearby agricultural land uses could be affected by increased dust settling on crops, or by construction noise disturbing livestock. Anyone regularly using roads near the facility site may experience temporary traffic delays or detours. The siting of facilities could result in the long-term and permanent conversion of land uses, which would be a potentially significant adverse land use impact if natural resource lands of long-term commercial significance are converted. If construction and decommissioning of a facility is located near people of color populations or low-income populations, this **would potentially result in disproportionate impacts** on these populations.

3.4.1.2 *Aesthetics and visual quality*

Construction and decommissioning activities for an onshore wind energy facility would involve a range of activities associated with potential visual impacts. Depending on the location and size of facilities and visual characteristics of the construction and decommissioning activities, visual quality impacts would range from less than significant to potentially significant adverse impacts. If construction and decommissioning of a facility is located near people of color populations or low-income populations, this **would potentially result in disproportionate impacts** on these populations.

3.4.1.3 *Historic and cultural resources*

Onshore wind energy development could have **disproportionate impacts** on historic and cultural resources. The impact analysis would be unique to each resource and would need to be conducted during future project-level review for facilities. The significance of Tribal cultural resources can only be understood from within the cultural context of an affected Tribe.

Accordingly, the impact assessment and determinations of significance or non-significance would be determined through engagement and consultation with potentially affected Tribes and the Washington State Department of Archaeology and Historic Preservation (DAHP) at the project level. For more information on these resources, see the *Historic and Cultural Resources Technical Report*.

3.4.1.4 Tribal rights, interests, and resources

Onshore wind energy development could have **disproportionate impacts** on Tribes and Tribal communities. Tribal lands are part of the overburdened community area definition and are discussed in that context in this report. The significance of Tribal rights, interests, and resources can only be understood from within the cultural context of an affected Tribe. Accordingly, specific project impacts and determinations of significance or non-significance will be determined through project-specific engagement and consultation with each potentially affected Tribe at the project level.

Potential impacts to Tribes are discussed in the *Tribal Rights, Interests, and Resources Technical Appendix*.

3.4.1.5 Biological resources

Construction and decommissioning could cause fragmentation of ecological communities that may affect the diversity of plant and animal species and migration patterns of animals; temporary vegetation removal and long-term recovery; changed ground conditions, such as soil compaction and minor drainage alterations, which may impact the ability of former biological communities to re-establish; and changes in water chemistry, temperature, or stream bottoms that affect aquatic species. Construction and decommissioning could also result in the direct or indirect mortality of species and changes to habitats. Construction and decommissioning of facilities could result in impacts to larger animals such as deer, bobcats, coyotes, and foxes. Small mammals may also be affected, especially mice, shrews, and voles. Plants and animals provide important cultural, subsistence, and medicinal resources to Tribal communities. Construction and decommissioning impacts on biological resources used by Tribal communities would be determined with engagement and in consultation with each potentially affected Tribe at the project level.

3.4.1.6 Public services and utilities and environmental health and safety

Depending on the specific location, severity, and fire response capacity, construction and decommissioning would have potentially significant adverse impacts due to an increased risk of a wildfire. A facility would result in potentially significant adverse impacts on fire response if activities require a large fire response in remote locations with limited response capabilities or if there are other unique aspects of a facility site. If construction or decommissioning of a facility is located near people of color populations or low-income populations, this would potentially result in **disproportionate impacts** on these populations.

3.4.1.7 Noise and vibration

If construction and decommissioning of facilities would occur within 2,500 feet of noise-sensitive receptors in quiet rural areas, this may result in a potentially significant adverse impact. Vibration from specific construction and decommissioning activities occurring at distances closer than 350 feet from residential land uses, or in close proximity to conventional or historic structures, would be a potentially significant adverse impact with respect to human annoyance or building damage. If construction or decommissioning of a facility is located near people of color populations or low-income populations, this would potentially result in **disproportionate impacts** on these populations.

3.4.1.8 Recreation

If a facility is built at or near current recreational uses, impacts would range from less than significant to potentially significant adverse impacts, depending on the specific uses impacted and whether there are other recreational sites near the facility. If construction or decommissioning of a facility is located in an area near or frequented by people of color populations or low-income populations, this would potentially result in **disproportionate impacts** on these populations.

3.4.2 Impacts from operation

3.4.2.1 Land use

As described for construction and decommissioning, the operation of onshore wind facilities would result in the conversion of land uses for the life of the facilities. The impacts of converting property to an onshore wind facility would depend on the existing use of the site. Many of the census tracts overlapping the study area that have people of color populations and low-income populations identified are also rural communities. For facilities located in rural areas, there is the potential to result in change to the rural character of the surrounding area, and/or perceptions of the rural character. The 2024 *Rural Clean Energy Economics and Community Engagement Report*, discussed further in the *Land Use Technical Resource Report*, identifies some of potential impacts to residents of rural communities.

Changes to rural character resulting from operation of a new utility-scale energy facility would range from less than significant impacts to potentially significant adverse impacts depending on whether plans and development regulations are in place to protect rural character and how they consider utility-scale onshore wind facilities. If a facility is sited near people of color populations or low-income populations, would potentially result in **disproportionate impacts** on these populations.

3.4.2.2 Aesthetics and visual quality

The degree of visual impact for an onshore wind energy facility is determined in part by the facility location and the existing visual landscape, number of viewers who experience the impact, and the type of activities viewers are engaged in when viewing a visual impact and the sensitivity to visual impacts. The degree of visual impact is also determined by the distances

that facilities are sited from communities and residences and at which viewers would experience ongoing visual impacts over the life of the onshore wind energy facility. An onshore wind energy facility located in or near a high-value scenic landscape or in proximity to viewers with unique scenic, Tribal, cultural, or ecological values typically would be more conspicuous and therefore would be perceived as having greater visual impact than if that same facility were present in a setting of low scenic value where similar facilities were already visible. Depending on the facility location and topography, visual impacts could extend to viewers outside the study area of the PEIS.

The facility size, operation of onshore wind energy facilities, and the nature of the facility structures would have potentially significant long-term visual impacts. Depending on the facility size range and the nature of the facility structures, operation of utility-scale onshore wind energy facilities could result in a range from less than significant impacts to potentially significant adverse impacts on visual quality. If a facility is sited near people of color populations or low-income populations, operations would potentially result in **disproportionate impacts** on these populations.

3.4.2.3 *Historic and cultural resources*

As noted in Section 3.4.1.3, onshore wind energy development could have **disproportionate impacts** on historic and cultural resources. The impact assessment and determinations of significance or non-significance would be determined through engagement and consultation with potentially affected Tribes and DAHP at the project level.

3.4.2.4 *Tribal rights, interests, and resources*

As noted in Section 3.4.1.4, onshore wind energy development could have **disproportionate impacts** on Tribes and Tribal communities. Specific project impacts and determinations of significance or non-significance will be determined through project-specific engagement and consultation with each potentially affected Tribe at the project level.

3.4.2.5 *Biological resources*

During operation, biological resources may be affected by continued fragmentation, vegetation maintenance and fire suppression, and increased traffic as well as increased potential to introduce invasive species. Plants and animals provide important subsistence and medicinal resources to Tribal communities. Operation impacts on biological resources used by Tribal communities would be determined with engagement and in consultation with each potentially affected Tribe at the project level.

3.4.2.6 *Public services and utilities and environmental health and safety*

Depending on the location and site-specific issues associated with the facility, there is a potential that facility operation would have potentially significant adverse impacts related to wildfire risk. A facility would result in potentially significant adverse impacts on fire response if activities require a large fire response in remote locations with limited response capabilities or if there are other unique aspects of a facility site. If a facility is located near people of color

populations or low-income populations, this would potentially result in **disproportionate impacts** on these populations.

3.4.2.7 Noise and vibration

Given the larger distances at which most sensitive receptors are assumed to be located from facilities, operation of many utility-scale onshore wind energy facilities would result in a less than significant impact. Wind turbines located closer than 1,000 feet to 2,400 feet from a noise-sensitive land use or closer than 3,000 to 5,000 feet from noise-sensitive land uses within a quiet rural setting or substations located closer than 110 to 650 feet from a noise-sensitive land use or closer than 350 to 2,000 feet from a noise-sensitive land use located in a rural area would have a potentially significant adverse impact. If a facility is located near people of color populations or low-income populations, this would potentially result in **disproportionate impacts** on these populations.

3.4.2.8 Recreation

If a facility is built in an area used and valued for its recreational opportunities, it would result in a potentially significant adverse impact if the facility results in the loss of those recreational opportunities. Elimination of recreational opportunities that results in increased use of neighboring recreational opportunities that in turn results in overcrowding or overuse, as well as segmentation, would also be a potentially significant adverse impact. If a facility is located in an area near or frequented by people of color populations or low-income populations, this would potentially result in **disproportionate impacts** on these populations.

3.4.3 Measures to avoid, reduce, and mitigate impacts

The PEIS identifies a variety of measures to avoid, reduce, and mitigate impacts. These measures are grouped into five categories:

- **General measures:** The general measures apply to all projects using the PEIS.
- **Recommended measures for siting and design:** These measures are recommended for siting and design in the pre-application phase of a project.
- **Required measures:** These measures must be implemented, as applicable, to use the PEIS. These include permits and approvals, plans, and other required measures.
- **Recommended measures for construction, operation, and decommissioning:** These measures are recommended for the construction, operation, and decommissioning phases of a project.
- **Mitigation measures for potential significant impacts:** These measures are provided only in sections for which potential significant impacts have been identified.

3.4.3.1 General measures

- **Laws, regulations, and permits:** Obtain required approvals and permits and ensure that a project adheres to relevant federal, state, and local laws and regulations.

Rationale: Laws, regulations, and permits provide standards and requirements for the protection of resources. The PEIS impact analysis and significance findings assume that developers would comply with all relevant laws and regulations and obtain required approvals.

- **Coordination with agencies, Tribes, and communities:** Coordinate with agencies, Tribes, and communities prior to submitting an application and throughout the life of the project to discuss project siting and design, construction, operations, and decommissioning impacts, and measures to avoid, reduce, and mitigate impacts. Developers should also seek feedback from agencies, Tribes, and communities when developing and implementing the resource protection plans and mitigation plans identified in the PEIS.

Rationale: Early coordination provides the opportunity to discuss potential project impacts and measures to avoid, reduce, and mitigate impacts. Continued coordination provides opportunities for adaptive management throughout the life of the project.

- **Land use:** Consider the following when siting and designing a project:
 - Existing land uses
 - Land ownership/land leases (e.g., grazing, farmland, forestry)
 - Local comprehensive plans and zoning
 - Designated flood zones, shorelines, natural resource lands, conservation lands, priority habitats, and other critical areas and lands prioritized for resource protection
 - Military testing, training, and operation areas
 - State-designated harbors
 - Air quality nonattainment areas

Rationale: Considering these factors early in the siting and design process avoids and minimizes the potential for land use conflicts. Project-specific analysis is needed to determine land use consistency.

- **Choose a project site and a project layout to avoid and minimize disturbance:** Select the project location and design the facility to avoid potential impacts to resources. Examples include the following:
 - Minimizing the need for extensive grading and excavation and reducing soil disturbance, potential erosion, compaction, and waterlogging by considering soil characteristics
 - Minimizing facility footprint and land disturbances, including limiting clearing and alterations to natural topography and landforms and maintaining existing vegetation
 - Minimizing the number of structures required and co-locating structures to share pads, fences, access roads, lighting, etc.

Rationale: Project sites and layouts may differ substantially in their potential for environmental impacts. Thoughtful selection of a project site and careful design of a facility layout can avoid and reduce environmental impacts.

- **Use existing infrastructure and disturbed lands, and co-locate facilities:** During siting and design, avoid and minimize impacts by:
 - Using existing infrastructure and disturbed lands, including roads, parking areas, staging areas, aggregate resources, and electrical and utility infrastructure
 - Co-locating facilities within existing rights-of-way or easements
 - Considering limitations of existing infrastructure, such as water and energy resources

Rationale: Using existing infrastructure and disturbed lands and co-locating facilities reduces impacts to resources that would otherwise result from new ground disturbance and placement of facilities in previously undisturbed areas.

- **Conduct studies and surveys early:** Conduct studies and surveys early in the process and at the appropriate time of year to gather data to inform siting and design. Examples include the following:
 - Geotechnical study
 - Habitat and vegetation study
 - Cultural resource survey
 - Wetland delineation

Rationale: Conducting studies and surveys early in the process and at the appropriate time of year provides data to inform siting and design choices that avoid and reduce impacts. This can reduce the overall timeline as well by providing information to agencies as part of a complete application for environmental reviews and permits.

- **Restoration and decommissioning:** Implement a Site Restoration Plan for interim reclamation following temporary construction and operations disturbance. Implement a Decommissioning Plan for site reclamation at the end of a project. Coordinate with state and local authorities, such as the Washington Department of Fish and Wildlife, county extension services, weed boards, or land management agencies on soil and revegetation measures, including approved seed mixes. Such plans address:
 - Documentation of pre-construction conditions and as-built construction drawings
 - Measures to salvage topsoil and revegetate disturbed areas with native and pollinator-supporting plants
 - Management of hazardous and solid wastes
 - Timelines for restoration and decommissioning actions
 - Monitoring of restoration actions
 - Adaptive management measures

Rationale: Restoration and decommissioning actions return disturbed areas to pre-construction conditions, promote soil health and revegetation of native plants, remove

project infrastructure from the landscape, and ensure that project components are disposed of or recycled in compliance with all applicable laws and regulations.

- **Cumulative impact assessment:** Assess cumulative impacts on resources based on reasonably foreseeable past, present, and future projects. Identify measures to avoid, reduce, and mitigate cumulative impacts. Consider local studies and plans, such as comprehensive plans.

Rationale: Cumulative impacts can result from incremental, but collectively significant, actions that occur over time. The purpose of the cumulative impacts analysis is to make sure that decision-makers consider the full range of consequences under anticipated future conditions.

3.4.3.2 Recommended measures for siting and design

- Site and design projects to avoid adverse impacts to populations with environmental justice considerations and overburdened community areas.
- Use available information, including the latest Washington state guidance, and mapping tools to identify people of color populations, low-income populations, and overburdened community areas potentially affected by a proposed project.
- Engage potentially affected communities and local community service providers early in the process to understand concerns, identify potential impacts, and consider preferred mitigation options.

3.4.3.3 Required measures

This section lists required measures for use of the PEIS, as applicable. There are no specific permit requirements that pertain to environmental justice.

- Ensure engagement and communications practices comply with Title VI and federal and state accessibility requirements and are culturally effective, linguistically appropriate, and accessible. Strategies include:
 - Engage with communities on how they prefer to receive information and tailor communications accordingly.
 - Use a variety of media tailored to affected communities, such as local print, online publications, and radio.
- Comply with local plans, such as comprehensive plans and sustainability plans, which may include environmental justice elements.

3.4.3.4 Recommended measures for construction, operation, and decommissioning

- Develop and implement public information sharing to provide technical project and environmental health information, including information on potential impacts and proposed mitigation, directly to potentially affected populations, overburdened communities, local agencies, and representative groups.

3.4.3.5 Mitigation measures for potential significant impacts

- To address disproportionate effects on historic and cultural resources, Tribes and Tribal communities, biological resources, public services and utilities, vibration, and environmental health and safety, develop Community Benefit Agreements, Tribal Benefit Agreements, community investments, or other agreements in coordination with potentially affected communities and Tribes to address impacts through mutually agreed upon mitigation. Examples of agreement outcomes could include measures to support local labor, such as workforce development opportunities, or measures to support community facilities and services.

Rationale: The process of developing agreements in coordination with local communities and Tribes allows people impacted by a project to participate in discussions that affect them. Such agreements can reduce the negative impacts of a project, especially to already overburdened communities, and promote broadly shared benefits.

3.4.4 Unavoidable significant adverse impacts

3.4.4.1 Tribal rights, interests, and resources and historic and cultural resources

As noted in Sections 3.4.1.3 and 3.4.1.4, onshore wind energy development could have **disproportionate impacts** on historic and cultural resources, Tribes, and Tribal communities. The impact assessment and determinations of significance or non-significance would be determined through engagement and consultation with potentially affected Tribes and DAHP at the project level.

3.4.4.2 Land use

Significant changes to rural character and land use may be unavoidable for facilities located in rural areas.

The impact on people of color populations and low-income populations would be determined at the project level. If a facility required a conversion of natural resource lands of long-term commercial significance depending on local plans and development regulations, or if it resulted in changes to rural character in an area containing a population of people of color or low-income population, this would potentially result in a **significant and unavoidable disproportionate impact**.

3.4.4.3 Aesthetics and visual quality

Some utility-scale onshore wind energy facilities may result in significant and unavoidable adverse impacts on visual quality, depending on location and design. If these impacts occur in an area with a population of people of color populations or low-income population, this would potentially result in a **significant and unavoidable disproportionate impact** on these populations.

3.4.4.4 Public services and utilities and environmental health and safety

Impacts associated with wildfire risk may be significant and unavoidable. Depending on the specific location, severity, and fire response capacity, there would be potentially significant adverse impacts due to increased risk of a wildfire. A facility would result in potentially significant adverse impacts on fire response if activities require a large fire response in remote locations with limited response capabilities or if there are other unique aspects of a facility site. If a facility is located near people of color populations or low-income populations, this would potentially result in **significant and unavoidable disproportionate impacts** on these populations.

3.4.4.5 Biological resources

Impacts on terrestrial special-status habitats and species may be significant and unavoidable. Determining whether mitigation options would reduce or eliminate impacts below significance would be dependent on the specific project and site. Mitigation to reduce impacts below significance for terrestrial special-status habitats or species may not be feasible. Plants and animals provide important subsistence and medicinal resources to Tribal communities. Impacts on biological resources used by Tribal communities would be determined with engagement and in consultation with each potentially affected Tribe at the project level.

3.5 Onshore wind facilities with battery energy storage systems

The impact analysis below evaluates potential disproportionate impacts from facilities co-located with battery energy storage systems (BESSs) on people of color populations and low-income populations using findings from the various resource analyses.

3.5.1 Impacts from construction, operations, and decommissioning

3.5.1.1 Land use

Impacts from facilities with co-located BESSs would be generally the same as for facilities without a BESS, discussed in Section 3.4. The addition of battery storage could generate a small amount of additional traffic during construction and decommissioning. The addition of battery storage could be perceived as added industrial-type facilities, resulting in a greater change in rural character than facilities without BESSs. If a facility is sited near people of color or low-income populations, **this would potentially result in disproportionate impacts** on these populations.

3.5.1.2 Aesthetics and visual quality

Impacts from facilities with co-located BESSs would be generally the same as for facilities without a BESS. Depending on the facility size range and the nature of facility structures, visual quality impacts would potentially be significant and adverse. If a facility is near people of color

populations or low-income populations, **this would potentially result in disproportionate impacts** on these populations.

3.5.1.3 *Historic and cultural resources*

As noted in Section 3.4.1.3, onshore wind energy development could have **disproportionate impacts** on historic and cultural resources. The impact assessment and determinations of significance or non-significance would be determined through engagement and consultation with potentially affected Tribes and DAHP at the project level.

3.5.1.4 *Tribal rights, interests, and resources*

As noted in Section 3.4.1.4, onshore wind energy development could have **disproportionate impacts** on Tribes and Tribal communities. Specific project impacts and determinations of significance or non-significance will be determined through project-specific engagement and consultation with each potentially affected Tribe at the project level.

3.5.1.5 *Biological resources*

Similar to construction, operation, and decommissioning of onshore wind energy facilities (as noted in Sections 3.4.1.5 and 3.4.2.5), construction, operation, and decommissioning of BESSs would have the same impacts on biological resources. Plants and animals provide important subsistence and medicinal resources to Tribal communities. Impacts on biological resources used by Tribal communities would be determined with engagement and in consultation with each potentially affected Tribe at the project level.

3.5.1.6 *Public services and utilities and environmental health and safety*

Impacts from facilities with co-located BESSs would be the same as for facilities without a BESS. If a facility is near people of color populations or low-income populations, this would potentially result in **disproportionate impacts** on these populations.

3.5.1.7 *Noise and vibration*

Construction, operations, and decommissioning impacts on noise and vibration for facilities with co-located BESSs would be similar to facilities without a BESS, except that the addition of a BESS could generate additional operational noise. If a facility is near people of color populations or low-income populations, this would potentially result in **disproportionate impacts** on these populations.

3.5.1.8 *Recreation*

Construction, operations, and decommissioning impacts on recreation for facilities with co-located BESSs would be similar to facilities without a BESS. If a facility is located in an area near or frequented by people of color populations or low-income populations, this would potentially result in **disproportionate impacts** on these populations.

3.5.2 Measures to avoid, reduce, and mitigate impacts

Measures to avoid, reduce, and mitigate impacts for facilities with co-located BESSs would be the same as those in Section 3.4.3.

3.5.3 Unavoidable significant adverse impacts

Impacts would be similar to facilities without a BESS. As noted in Sections 3.4.1.3 and 3.4.1.4, onshore wind energy development could have **disproportionate impacts** on historic and cultural resources, Tribes, and Tribal communities. The impact assessment and determinations of significance or non-significance would be determined through engagement and consultation with potentially affected Tribes and DAHP at the project level.

Utility-scale onshore wind energy facilities that would be developed with co-located BESSs would potentially result in significant and unavoidable adverse impacts on land use, aesthetics and visual quality, biological resources, public services and utilities, environmental health and safety, noise and vibration, and recreation. If these impacts occur in an area with a people of color population or low-income population, this would potentially result in a **potentially significant and unavoidable disproportionate impact** on these populations.

3.6 Onshore wind facilities that include agricultural uses

The impact analysis below evaluates potential disproportionate impacts from facilities co-located with agricultural uses.

3.6.1 Impacts from construction, operations, and decommissioning

As noted in Sections 3.4.1.3 and 3.4.1.4, onshore wind energy development could have **disproportionate impacts** on historic and cultural resources, Tribes, and Tribal communities. The impact assessment and determinations of significance or non-significance would be determined through engagement and consultation with potentially affected Tribes and DAHP at the project level.

Impacts for facilities that are co-located with agricultural uses would generally be the same as facilities that are not. If construction of a facility is near people of color populations or low-income populations, land use, aesthetics and visual quality, biological resources, public services and utilities, environmental health and safety impacts, noise and vibration, and recreation would potentially result in **disproportionate impacts** on these populations.

Impacts would be similar to those discussed for facilities without co-located agricultural uses, with some differences, as follows:

- Incorporating ongoing agricultural uses along with utility-scale onshore wind energy may improve a facility's compatibility with local goals and policies related to preserving rural character and natural resource lands. However, the potential for disproportionate land use impacts remains.

- Facilities with co-located agricultural use would entail a different fencing system to potentially accommodate grazing or other agricultural activities. Therefore, there could be access limitations to portions of the site, presenting challenges for first responders. A facility would result in potentially significant adverse impacts to fire response if activities required a large fire response in remote locations with limited response capabilities, or if there are other unique aspects of a facility site.
- Facilities with co-located agricultural use could be located on lands that are multi-use and could support recreational activities. If the facility results in the loss of recreation resources, segmentation without full access to an activity, or crowding of alternative recreational opportunities, there would be potentially significant adverse impacts on recreation.
- New agricultural uses could generate noise. Depending on the existing use of the site and proximity to noise-sensitive receptors, this would result in potentially significant adverse impacts to residents in the vicinity.

3.6.2 Measures to avoid, reduce, and mitigate impacts

Measures to avoid, reduce, and mitigate impacts for facilities with co-located agricultural use would be the same as those in Section 3.4.3.

3.6.3 Unavoidable significant adverse impacts

Potentially significant and unavoidable impacts on land use, aesthetics and visual quality, public services and utilities, environmental health and safety, and biological resources would be similar to facilities without co-located agricultural use. These may result in **potentially significant and unavoidable disproportionate impacts** on people of color populations or low-income populations.

As noted in Sections 3.4.1.3 and 3.4.1.4, onshore wind energy development could have **disproportionate impacts** on historic and cultural resources, Tribes, and Tribal communities. The impact assessment and determinations of significance or non-significance would be determined through engagement and consultation with potentially affected Tribes and DAHP at the project level.

3.7 No Action Alternative

Under the No Action Alternative, agencies would continue to conduct environmental review and permitting for utility-scale onshore wind energy facilities under existing laws on a project-by-project basis. The potential impacts would be similar to the impacts for the types of facilities described above for construction, operation, and decommissioning, depending on project size and design.

Onshore wind energy development could have **disproportionate impacts** on historic and cultural resources, Tribes, and Tribal communities. Some onshore wind facilities could have significant adverse impacts on land use, aesthetics and visual quality, public services and

utilities, environmental health and safety, recreation, noise and vibration, and biological resources.

The No Action Alternative would potentially result in **disproportionate impacts** on people of color populations and low-income populations.

4 References


- ACS (American Community Survey), 2022. U.S. Census Bureau 2018–2022 American Community Survey 5-Year Estimates.
- CEQ (Council on Environmental Quality), 2024. Climate and Economic Justice Screening Tool. Accessed June 11, 2024.
- OFM (Washington State Office of Financial Management), 2024. Overburdened Communities of Washington State Webmap. Accessed Jun 11, 2024. Available at: <https://geo.wa.gov/datasets/wa-ofm::overburdened-communities-of-washington-state/explore>.
- U.S. Census Bureau, 2022. “Glossary.” Last modified April 11, 2022; accessed March 25, 2024. Available at: <https://www.census.gov/programs-surveys/geography/about/glossary.html>.
- WDOH (Washington Department of Health), 2024. Washington Environmental Health Disparities Map. Version 2.0. Accessed March 2024. Available at: <https://fortress.wa.gov/doh/wtn/WTNIBL/>.

**Appendix C, Attachment 1. Census Tracts
Overlapping Study Area and Thresholds for
People of Color Populations, Low-Income
Populations, and Overburdened Community
Areas**

Attachment 1. Census Tracts Overlapping Study Area and Thresholds for People of Color Populations, Low-Income Populations, and Overburdened Community Areas

The following tables list all census tracts that overlap the wind study area. Census tracts that are shaded meet the threshold to be identified as containing a concentration of people of color populations (Table 1-1), low-income population (Table 1-2), or an overburdened community area (Table 1-3).

Table 1-1. Percentage of people of color in census tracts overlapping the study area and reference areas

 Census tract with people of color population greater than 34% (greater than the percentage for Washington reference area)

Census tract	Total population	White alone, not Hispanic or Latino	Race other than white alone and/or Hispanic or Latino	Percent people of color
Washington	7,688,549	5,038,521	2,650,028	34%
Census Tract 9501; Adams County	2,456	2,051	405	16%
Census Tract 9502; Adams County	1,935	1,202	733	38%
Census Tract 9503.01; Adams County	1,669	523	1,146	69%
Census Tract 9503.02; Adams County	2,720	246	2,474	91%
Census Tract 9503.03; Adams County	2,826	657	2,169	77%
Census Tract 9505; Adams County	5,920	1,194	4,726	80%
Census Tract 9601; Asotin County	4,363	4,040	323	7%
Census Tract 107.01; Benton County	2,122	1,525	597	28%
Census Tract 108.07; Benton County	1,898	1,565	333	18%
Census Tract 108.11; Benton County	5,632	4,124	1,508	27%
Census Tract 108.14; Benton County	5,245	4,347	898	17%
Census Tract 115.01; Benton County	6,543	4,166	2,377	36%
Census Tract 115.04; Benton County	2,992	1,866	1,126	38%
Census Tract 115.06; Benton County	7,605	6,555	1,050	14%
Census Tract 116; Benton County	1,032	336	696	67%
Census Tract 117.02; Benton County	5,464	2,288	3,176	58%

Census tract	Total population	White alone, not Hispanic or Latino	Race other than white alone and/or Hispanic or Latino	Percent people of color
Census Tract 118.01; Benton County	3,342	2,024	1,318	39%
Census Tract 118.02; Benton County	2,797	1,343	1,454	52%
Census Tract 119; Benton County	6,631	3,984	2,647	40%
Census Tract 120; Benton County	0	0	0	0%
Census Tract 9601; Chelan County	2,357	1,723	634	27%
Census Tract 9602.01; Chelan County	4,388	3,930	458	10%
Census Tract 9602.02; Chelan County	1,970	1,790	180	9%
Census Tract 9602.03; Chelan County	1,120	1,061	59	5%
Census Tract 9603.01; Chelan County	1,844	1,279	565	31%
Census Tract 9603.02; Chelan County	2,825	1,560	1,265	45%
Census Tract 9604; Chelan County	4,139	2,011	2,128	51%
Census Tract 9605.01; Chelan County	2,764	2,269	495	18%
Census Tract 9605.02; Chelan County	5,428	4,217	1,211	22%
Census Tract 9606; Chelan County	4,177	3,155	1,022	24%
Census Tract 9607; Chelan County	3,923	3,045	878	22%
Census Tract 9612; Chelan County	4,260	2,913	1,347	32%
Census Tract 9613.01; Chelan County	1,462	1,147	315	22%
Census Tract 9613.04; Chelan County	3,976	2,762	1,214	31%
Census Tract 6; Clallam County	3,763	3,177	586	16%
Census Tract 18; Clallam County	3,059	2,777	282	9%
Census Tract 23.01; Clallam County	1,990	1,728	262	13%
Census Tract 23.02; Clallam County	2,738	2,600	138	5%
Census Tract 401.01; Clark County	5,139	4,626	513	10%
Census Tract 401.02; Clark County	3,560	3,348	212	6%
Census Tract 402.01; Clark County	8,389	7,408	981	12%
Census Tract 402.02; Clark County	3,691	3,556	135	4%
Census Tract 402.03; Clark County	4,777	4,288	489	10%

Census tract	Total population	White alone, not Hispanic or Latino	Race other than white alone and/or Hispanic or Latino	Percent people of color
Census Tract 403.01; Clark County	2,042	1,707	335	16%
Census Tract 403.04; Clark County	3,051	2,650	401	13%
Census Tract 403.05; Clark County	3,137	2,838	299	10%
Census Tract 404.16; Clark County	3,924	3,634	290	7%
Census Tract 405.04; Clark County	5,361	4,564	797	15%
Census Tract 405.10; Clark County	5,446	4,850	596	11%
Census Tract 405.11; Clark County	2,361	2,161	200	8%
Census Tract 406.03; Clark County	4,866	4,391	475	10%
Census Tract 406.04; Clark County	7,148	5,572	1576	22%
Census Tract 9602; Columbia County	3,980	3,252	728	18%
Census Tract 8.02; Cowlitz County	3,447	3,088	359	10%
Census Tract 9.01; Cowlitz County	4,549	4,152	397	9%
Census Tract 9.02; Cowlitz County	3,436	2,385	1,051	31%
Census Tract 12; Cowlitz County	4,416	3,638	778	18%
Census Tract 15.01; Cowlitz County	3,745	3,222	523	14%
Census Tract 15.03; Cowlitz County	6,361	4,666	1,695	27%
Census Tract 15.04; Cowlitz County	3,642	2,686	956	26%
Census Tract 16.01; Cowlitz County	4,085	3,404	681	17%
Census Tract 16.02; Cowlitz County	2,735	2,515	220	8%
Census Tract 17; Cowlitz County	5,514	5,025	489	9%
Census Tract 18; Cowlitz County	1,855	1,392	463	25%
Census Tract 19; Cowlitz County	5,071	4,668	403	8%
Census Tract 20.01; Cowlitz County	4,047	3,604	443	11%
Census Tract 20.03; Cowlitz County	4,795	4,174	621	13%
Census Tract 20.04; Cowlitz County	1,424	1,349	75	5%
Census Tract 9800; Cowlitz County	559	389	170	30%
Census Tract 9501.01; Douglas County	3,559	1,523	2,036	57%

Census tract	Total population	White alone, not Hispanic or Latino	Race other than white alone and/or Hispanic or Latino	Percent people of color
Census Tract 9501.02; Douglas County	3,454	1,055	2,399	69%
Census Tract 9502; Douglas County	2,993	2,418	575	19%
Census Tract 9503; Douglas County	7,550	5,134	2,416	32%
Census Tract 9504; Douglas County	7,251	5,524	1,727	24%
Census Tract 9506; Douglas County	4,280	2,805	1,475	34%
Census Tract 9701; Ferry County	2,665	2,218	447	17%
Census Tract 206.08; Franklin County	6,881	3,981	2,900	42%
Census Tract 207; Franklin County	1,261	846	415	33%
Census Tract 208.01; Franklin County	3,592	850	2,742	76%
Census Tract 208.02; Franklin County	6,204	2,524	3,680	59%
Census Tract 9703; Garfield County	2,310	2,051	259	11%
Census Tract 101; Grant County	3,409	2,866	543	16%
Census Tract 102; Grant County	3,342	2,727	615	18%
Census Tract 103; Grant County	5,428	3,755	1,673	31%
Census Tract 104.01; Grant County	3,366	2,618	748	22%
Census Tract 104.02; Grant County	5,503	3,273	2,230	41%
Census Tract 105; Grant County	3,127	1,182	1,945	62%
Census Tract 107; Grant County	3,154	1,881	1,273	40%
Census Tract 110.01; Grant County	6,074	3,704	2,370	39%
Census Tract 110.02; Grant County	6,256	4,236	2,020	32%
Census Tract 112; Grant County	6,842	4,568	2,274	33%
Census Tract 113; Grant County	3,423	1,289	2,134	62%
Census Tract 114.01; Grant County	2,473	1,327	1,146	46%
Census Tract 114.03; Grant County	4,382	169	4,213	96%
Census Tract 114.04; Grant County	1,125	275	850	76%
Census Tract 114.05; Grant County	3,189	435	2,754	86%
Census Tract 114.06; Grant County	3,196	1,203	1,993	62%

Census tract	Total population	White alone, not Hispanic or Latino	Race other than white alone and/or Hispanic or Latino	Percent people of color
Census Tract 2.02; Grays Harbor County	1,529	1,200	329	22%
Census Tract 3; Grays Harbor County	3,678	3,134	544	15%
Census Tract 4.01; Grays Harbor County	2,872	2,724	148	5%
Census Tract 4.02; Grays Harbor County	3,691	3,217	474	13%
Census Tract 5.01; Grays Harbor County	3,606	2,817	789	22%
Census Tract 5.02; Grays Harbor County	3,252	2,445	807	25%
Census Tract 6; Grays Harbor County	4,500	3,705	795	18%
Census Tract 7; Grays Harbor County	4,522	3,402	1,120	25%
Census Tract 8; Grays Harbor County	4,580	3,832	748	16%
Census Tract 9; Grays Harbor County	6,137	4,488	1,649	27%
Census Tract 10; Grays Harbor County	3,901	2,398	1,503	39%
Census Tract 11; Grays Harbor County	4,492	3,570	922	21%
Census Tract 13; Grays Harbor County	3,659	3,048	611	17%
Census Tract 14; Grays Harbor County	2,152	1,720	432	20%
Census Tract 15; Grays Harbor County	4,098	3,286	812	20%
Census Tract 16.02; Grays Harbor County	3,601	2,258	1,343	37%
Census Tract 9502.02; Jefferson County	2,047	1,722	325	16%
Census Tract 9503.01; Jefferson County	3,957	3,622	335	8%
Census Tract 9503.02; Jefferson County	2,858	2,389	469	16%
Census Tract 9504; Jefferson County	4,001	3,332	669	17%
Census Tract 9505.01; Jefferson County	4,795	4,080	715	15%
Census Tract 9505.02; Jefferson County	2,782	2,466	316	11%
Census Tract 9506.02; Jefferson County	3,704	3,398	306	8%
Census Tract 9506.03; Jefferson County	3,050	2,494	556	18%
Census Tract 9507.02; Jefferson County	2,252	1,528	724	32%
Census Tract 315.01; King County	3,987	3,466	521	13%
Census Tract 315.02; King County	4,827	4,034	793	16%

Census tract	Total population	White alone, not Hispanic or Latino	Race other than white alone and/or Hispanic or Latino	Percent people of color
Census Tract 320.03; King County	5,661	4,532	1,129	20%
Census Tract 321.02; King County	5,064	4,182	882	17%
Census Tract 325; King County	5,791	4,978	813	14%
Census Tract 327.05; King County	3,635	3,104	531	15%
Census Tract 327.06; King County	2,859	2,347	512	18%
Census Tract 328; King County	2,633	2,512	121	5%
Census Tract 809; Kitsap County	4,739	2,764	1975	42%
Census Tract 901.01; Kitsap County	5,504	4,542	962	17%
Census Tract 901.02; Kitsap County	6,108	4,847	1,261	21%
Census Tract 902.02; Kitsap County	5,646	4,242	1,404	25%
Census Tract 905.02; Kitsap County	4,939	3,797	1142	23%
Census Tract 913.01; Kitsap County	4,793	3,958	835	17%
Census Tract 913.02; Kitsap County	6,115	5,280	835	14%
Census Tract 920; Kitsap County	5,772	5,232	540	9%
Census Tract 921.01; Kitsap County	5,009	3,851	1,158	23%
Census Tract 921.02; Kitsap County	4,845	3,224	1621	33%
Census Tract 924; Kitsap County	6,526	4,546	1980	30%
Census Tract 927.01; Kitsap County	5,113	4,295	818	16%
Census Tract 928.01; Kitsap County	4,841	3,736	1105	23%
Census Tract 928.02; Kitsap County	4,545	3,811	734	16%
Census Tract 928.03; Kitsap County	2,694	2,511	183	7%
Census Tract 929.01; Kitsap County	5,879	4,786	1,093	19%
Census Tract 929.02; Kitsap County	5,690	4,318	1372	24%
Census Tract 9401; Kitsap County	7,045	4,866	2179	31%
Census Tract 9751.01; Kittitas County	2,501	2,312	189	8%
Census Tract 9751.03; Kittitas County	1,424	1,175	249	17%
Census Tract 9751.04; Kittitas County	1,812	1,421	391	22%

Census tract	Total population	White alone, not Hispanic or Latino	Race other than white alone and/or Hispanic or Latino	Percent people of color
Census Tract 9752.01; Kittitas County	3,356	2,732	624	19%
Census Tract 9752.02; Kittitas County	1,493	1,235	258	17%
Census Tract 9752.03; Kittitas County	1,304	1,032	272	21%
Census Tract 9753; Kittitas County	5,699	4,968	731	13%
Census Tract 9755; Kittitas County	5,902	4,348	1,554	26%
Census Tract 9757; Kittitas County	4,889	4,141	748	15%
Census Tract 9501.01; Klickitat County	1,630	1,234	396	24%
Census Tract 9501.02; Klickitat County	3,406	2,960	446	13%
Census Tract 9501.03; Klickitat County	4,187	3,774	413	10%
Census Tract 9502; Klickitat County	4,548	3,923	625	14%
Census Tract 9503.02; Klickitat County	5,665	3,857	1,808	32%
Census Tract 9701; Lewis County	3,706	3,139	567	15%
Census Tract 9702; Lewis County	3,922	2,860	1,062	27%
Census Tract 9703; Lewis County	6,379	4,831	1548	24%
Census Tract 9704; Lewis County	6,283	5,002	1,281	20%
Census Tract 9707; Lewis County	4,302	3,129	1173	27%
Census Tract 9708; Lewis County	4,578	3,277	1301	28%
Census Tract 9710; Lewis County	3,051	2,453	598	20%
Census Tract 9711; Lewis County	4,394	3,844	550	13%
Census Tract 9712; Lewis County	3,957	3,370	587	15%
Census Tract 9713; Lewis County	5,996	5,353	643	11%
Census Tract 9714; Lewis County	3,195	2,576	619	19%
Census Tract 9715.01; Lewis County	2,913	2,154	759	26%
Census Tract 9715.02; Lewis County	5,100	4,627	473	9%
Census Tract 9716; Lewis County	4,387	3,753	634	14%
Census Tract 9717; Lewis County	4,853	3,714	1,139	23%
Census Tract 9718; Lewis County	3,945	3,351	594	15%

Census tract	Total population	White alone, not Hispanic or Latino	Race other than white alone and/or Hispanic or Latino	Percent people of color
Census Tract 9719; Lewis County	3,191	2,654	537	17%
Census Tract 9720; Lewis County	2,348	2,116	232	10%
Census Tract 9601; Lincoln County	1,854	1,577	277	15%
Census Tract 9602; Lincoln County	3,308	2,965	343	10%
Census Tract 9603; Lincoln County	2,807	2,656	151	5%
Census Tract 9604; Lincoln County	3,067	2,676	391	13%
Census Tract 9601; Mason County	942	887	55	6%
Census Tract 9602.02; Mason County	3,401	2,935	466	14%
Census Tract 9603.01; Mason County	2,071	1,837	234	11%
Census Tract 9603.02; Mason County	4,435	3,784	651	15%
Census Tract 9604.01; Mason County	5,280	3,769	1,511	29%
Census Tract 9604.03; Mason County	3,122	2,758	364	12%
Census Tract 9605; Mason County	5,462	4,481	981	18%
Census Tract 9606; Mason County	4,688	3,463	1,225	26%
Census Tract 9610; Mason County	5,339	4,437	902	17%
Census Tract 9611.02; Mason County	3,874	3,330	544	14%
Census Tract 9612; Mason County	4,355	3,580	775	18%
Census Tract 9613; Mason County	4,162	2,958	1,204	29%
Census Tract 9703.03; Okanogan County	1,730	1,483	247	14%
Census Tract 9704; Okanogan County	4,003	2,703	1,300	32%
Census Tract 9705; Okanogan County	2,109	1,424	685	32%
Census Tract 9706.02; Okanogan County	3,691	3,071	620	17%
Census Tract 9708; Okanogan County	5,054	1,494	3,560	70%
Census Tract 9709; Okanogan County	3,072	2,440	632	21%
Census Tract 9710; Okanogan County	4,069	3,305	764	19%
Census Tract 9502; Pacific County	5,026	3,650	1,376	27%
Census Tract 9503.01; Pacific County	2,286	1,876	410	18%

Census tract	Total population	White alone, not Hispanic or Latino	Race other than white alone and/or Hispanic or Latino	Percent people of color
Census Tract 9504; Pacific County	3,957	3,477	480	12%
Census Tract 9701; Pend Oreille County	1,684	1,448	236	14%
Census Tract 9702; Pend Oreille County	2,781	2,132	649	23%
Census Tract 9703; Pend Oreille County	3,507	3,181	326	9%
Census Tract 9704; Pend Oreille County	2,827	2,411	416	15%
Census Tract 9705; Pend Oreille County	2,771	2,350	421	15%
Census Tract 701; Pierce County	3,881	3,268	613	16%
Census Tract 725.03; Pierce County	4,689	4,132	557	12%
Census Tract 725.04; Pierce County	4,747	3,787	960	20%
Census Tract 725.06; Pierce County	3,917	3,450	467	12%
Census Tract 725.08; Pierce County	4,038	3,409	629	16%
Census Tract 726.01; Pierce County	5,096	4,291	805	16%
Census Tract 726.02; Pierce County	3,929	3,246	683	17%
Census Tract 726.03; Pierce County	6,497	5,066	1,431	22%
Census Tract 731.19; Pierce County	3,062	2,432	630	21%
Census Tract 732; Pierce County	6,653	5,323	1,330	20%
Census Tract 9508.02; Skagit County	2,969	2,737	232	8%
Census Tract 9508.03; Skagit County	1,441	1,236	205	14%
Census Tract 9509; Skagit County	4,903	3,771	1,132	23%
Census Tract 9510; Skagit County	2,860	2,416	444	16%
Census Tract 9511.01; Skagit County	1,936	1,464	472	24%
Census Tract 9511.02; Skagit County	3,460	2,796	664	19%
Census Tract 9512; Skagit County	3,344	2,867	477	14%
Census Tract 9513; Skagit County	1,999	1,616	383	19%
Census Tract 9527; Skagit County	3,832	3,179	653	17%
Census Tract 9501; Skamania County	43	43	0	0%
Census Tract 9502; Skamania County	4,887	3,799	1,088	22%

Census tract	Total population	White alone, not Hispanic or Latino	Race other than white alone and/or Hispanic or Latino	Percent people of color
Census Tract 9503; Skamania County	2,200	1,806	394	18%
Census Tract 9504; Skamania County	2,407	2,083	324	13%
Census Tract 9505; Skamania County	2,581	2,158	423	16%
Census Tract 532.01; Snohomish County	4,819	3,941	878	18%
Census Tract 533.01; Snohomish County	8,001	6,964	1,037	13%
Census Tract 533.02; Snohomish County	6,762	5,530	1,232	18%
Census Tract 534; Snohomish County	6,136	5,053	1,083	18%
Census Tract 535.06; Snohomish County	5,843	5,221	622	11%
Census Tract 536.06; Snohomish County	3,409	3,079	330	10%
Census Tract 537; Snohomish County	3,209	2,953	256	8%
Census Tract 538.01; Snohomish County	3,626	3,249	377	10%
Census Tract 538.03; Snohomish County	5,482	4,358	1,124	21%
Census Tract 50; Spokane County	5,244	4,246	998	19%
Census Tract 101.01; Spokane County	3,959	3,498	461	12%
Census Tract 101.02; Spokane County	2,830	2,523	307	11%
Census Tract 102.01; Spokane County	4,299	3,902	397	9%
Census Tract 102.04; Spokane County	3,452	3,109	343	10%
Census Tract 103.03; Spokane County	3,641	3,432	209	6%
Census Tract 103.04; Spokane County	5,574	4,775	799	14%
Census Tract 104.01; Spokane County	8,884	5,219	3,665	41%
Census Tract 104.03; Spokane County	3,602	3,148	454	13%
Census Tract 104.04; Spokane County	2,995	2,649	346	12%
Census Tract 105.08; Spokane County	4,516	4,242	274	6%
Census Tract 112.02; Spokane County	4,025	3,237	788	20%
Census Tract 114; Spokane County	5,713	4,821	892	16%
Census Tract 123; Spokane County	5,985	4,566	1,419	24%
Census Tract 124.01; Spokane County	6,068	5,423	645	11%


Census tract	Total population	White alone, not Hispanic or Latino	Race other than white alone and/or Hispanic or Latino	Percent people of color
Census Tract 124.02; Spokane County	7,176	6,314	862	12%
Census Tract 131.02; Spokane County	5,862	5,070	792	14%
Census Tract 132.01; Spokane County	7,178	6,133	1,045	15%
Census Tract 132.03; Spokane County	2,851	2,470	381	13%
Census Tract 132.04; Spokane County	5,414	5,037	377	7%
Census Tract 132.05; Spokane County	4,261	3,986	275	6%
Census Tract 133; Spokane County	3,318	3,232	86	3%
Census Tract 134.01; Spokane County	5,949	5,030	919	15%
Census Tract 135.01; Spokane County	2,121	1,796	325	15%
Census Tract 135.02; Spokane County	2,192	2,024	168	8%
Census Tract 135.03; Spokane County	6,189	5,682	507	8%
Census Tract 136; Spokane County	5,177	4,333	844	16%
Census Tract 137; Spokane County	3,935	3,158	777	20%
Census Tract 139; Spokane County	5,820	4,920	900	15%
Census Tract 140.02; Spokane County	6,095	4,689	1,406	23%
Census Tract 141; Spokane County	6,899	6,289	610	9%
Census Tract 142; Spokane County	3,861	3,346	515	13%
Census Tract 143; Spokane County	3,012	2,728	284	9%
Census Tract 9501.01; Stevens County	4,802	4,221	581	12%
Census Tract 9501.02; Stevens County	3,429	3,059	370	11%
Census Tract 9502; Stevens County	4,598	4,048	550	12%
Census Tract 9506; Stevens County	2,523	2,037	486	19%
Census Tract 9508; Stevens County	3,436	3,088	348	10%
Census Tract 9509; Stevens County	1,663	1,489	174	10%
Census Tract 9511; Stevens County	4,031	3,670	361	9%
Census Tract 9513.01; Stevens County	2,788	2,637	151	5%
Census Tract 9513.02; Stevens County	1,495	1,342	153	10%

Census tract	Total population	White alone, not Hispanic or Latino	Race other than white alone and/or Hispanic or Latino	Percent people of color
Census Tract 9514.01; Stevens County	4,082	3,750	332	8%
Census Tract 9514.02; Stevens County	4,486	3,938	548	12%
Census Tract 116.24; Thurston County	4,566	3,099	1,467	32%
Census Tract 117.20; Thurston County	5,978	5,353	625	10%
Census Tract 118.10; Thurston County	4,367	3,252	1,115	26%
Census Tract 118.21; Thurston County	5,551	3,767	1,784	32%
Census Tract 118.22; Thurston County	3,999	3,279	720	18%
Census Tract 119.01; Thurston County	2,403	1,810	593	25%
Census Tract 119.02; Thurston County	4,966	4,048	918	18%
Census Tract 121; Thurston County	4,777	4,422	355	7%
Census Tract 122.11; Thurston County	2,918	2,302	616	21%
Census Tract 122.21; Thurston County	8,341	5,469	2,872	34%
Census Tract 122.25; Thurston County	5,449	4,202	1,247	23%
Census Tract 124.12; Thurston County	6,237	5,067	1,170	19%
Census Tract 124.20; Thurston County	4,298	3,572	726	17%
Census Tract 124.21; Thurston County	2,815	1,922	893	32%
Census Tract 125.10; Thurston County	3,660	2,839	821	22%
Census Tract 125.30; Thurston County	4,908	4,090	818	17%
Census Tract 125.31; Thurston County	3,762	3,156	606	16%
Census Tract 125.32; Thurston County	3,211	2,587	624	19%
Census Tract 126.10; Thurston County	6,402	5,027	1,375	21%
Census Tract 126.20; Thurston County	4,640	4,018	622	13%
Census Tract 127.10; Thurston County	2,261	1,928	333	15%
Census Tract 127.20; Thurston County	7,475	5,153	2,322	31%
Census Tract 127.30; Thurston County	6,636	5,210	1,426	21%
Census Tract 9501; Wahkiakum County	4,476	3,691	785	18%
Census Tract 9200; Walla Walla County	5,890	3,411	2,479	42%

Census tract	Total population	White alone, not Hispanic or Latino	Race other than white alone and/or Hispanic or Latino	Percent people of color
Census Tract 9201; Walla Walla County	5,095	4,197	898	18%
Census Tract 9209.01; Walla Walla County	4,207	2,943	1,264	30%
Census Tract 9209.02; Walla Walla County	5,583	5,033	550	10%
Census Tract 1.01; Whatcom County	3,442	2,974	468	14%
Census Tract 2.01; Whatcom County	4,144	3,307	837	20%
Census Tract 8.05; Whatcom County	5,085	4,127	958	19%
Census Tract 8.07; Whatcom County	3,110	2,537	573	18%
Census Tract 8.09; Whatcom County	2,705	2,287	418	15%
Census Tract 9.02; Whatcom County	7,080	5,385	1,695	24%
Census Tract 12.02; Whatcom County	4,095	3,492	603	15%
Census Tract 101.01; Whatcom County	2,704	2,529	175	6%
Census Tract 101.03; Whatcom County	2,489	1,867	622	25%
Census Tract 102.01; Whatcom County	3,138	2,770	368	12%
Census Tract 102.02; Whatcom County	5,438	4,275	1,163	21%
Census Tract 103.01; Whatcom County	7,057	4,959	2,098	30%
Census Tract 103.02; Whatcom County	4,757	4,009	748	16%
Census Tract 103.03; Whatcom County	7,859	5,637	2,222	28%
Census Tract 104.07; Whatcom County	3,229	3,039	190	6%
Census Tract 104.08; Whatcom County	2,918	2,551	367	13%
Census Tract 105.03; Whatcom County	6,242	4,654	1,588	25%
Census Tract 105.05; Whatcom County	5,540	4,019	1,521	27%
Census Tract 105.06; Whatcom County	3,324	2,548	776	23%
Census Tract 106; Whatcom County	7,688	5,420	2,268	30%
Census Tract 107.01; Whatcom County	6,333	4,928	1,405	22%
Census Tract 107.02; Whatcom County	5,088	3,684	1,404	28%
Census Tract 2.01; Whitman County	4,440	3,301	1,139	26%
Census Tract 2.02; Whitman County	1,924	1,455	469	24%

Census tract	Total population	White alone, not Hispanic or Latino	Race other than white alone and/or Hispanic or Latino	Percent people of color
Census Tract 3; Whitman County	6,623	4,694	1,929	29%
Census Tract 4; Whitman County	4,363	3,498	865	20%
Census Tract 6.02; Whitman County	3,758	2,851	907	24%
Census Tract 7; Whitman County	3,450	3,003	447	13%
Census Tract 8; Whitman County	3,457	2,995	462	13%
Census Tract 9; Whitman County	3,774	3,317	457	12%
Census Tract 10; Whitman County	2,054	1,686	368	18%
Census Tract 16.01; Yakima County	2,635	1,679	956	36%
Census Tract 17.01; Yakima County	3,932	2,303	1,629	41%
Census Tract 18.01; Yakima County	4,310	1,108	3,202	74%
Census Tract 21.01; Yakima County	2,356	848	1,508	64%
Census Tract 22.02; Yakima County	2,155	1,369	786	36%
Census Tract 27.01; Yakima County	3,518	226	3,292	94%
Census Tract 29; Yakima County	6,694	3,025	3,669	55%
Census Tract 30.02; Yakima County	4,063	3,252	811	20%
Census Tract 30.03; Yakima County	1,715	1,516	199	12%
Census Tract 30.04; Yakima County	2,852	2,122	730	26%

Table 1-2. Low-income population in census tracts overlapping the study area and reference area

 Census tract with low-income population greater than 23% (greater than the percentage for Washington reference area)

Census tract	Total population	Number of low-income people	Percent of population low-income
Washington	7,553,642	1,739,075	23%
Census Tract 9501; Adams County	2,358	743	32%
Census Tract 9502; Adams County	1,935	691	36%
Census Tract 9503.01; Adams County	1,647	773	47%
Census Tract 9503.02; Adams County	2,720	1,506	55%
Census Tract 9503.03; Adams County	2,804	1,184	42%
Census Tract 9505; Adams County	5,892	2,765	47%
Census Tract 9601; Asotin County	4,363	917	21%
Census Tract 9602; Asotin County	4,440	1,295	29%
Census Tract 107.01; Benton County	2,114	402	19%
Census Tract 108.07; Benton County	1,843	255	14%
Census Tract 108.11; Benton County	5,551	253	5%
Census Tract 108.14; Benton County	5,245	281	5%
Census Tract 115.01; Benton County	6,501	2,087	32%
Census Tract 115.04; Benton County	2,992	941	31%
Census Tract 115.06; Benton County	7,588	311	4%
Census Tract 116; Benton County	1,032	308	30%
Census Tract 117.02; Benton County	5,386	1,836	34%
Census Tract 118.01; Benton County	3,342	703	21%
Census Tract 118.02; Benton County	2,797	828	30%
Census Tract 119; Benton County	6,631	2,426	37%
Census Tract 120; Benton County	0	0	0%
Census Tract 9601; Chelan County	2,356	457	19%
Census Tract 9602.01; Chelan County	4,350	767	18%
Census Tract 9602.02; Chelan County	1,967	391	20%

Census tract	Total population	Number of low-income people	Percent of population low-income
Census Tract 9602.03; Chelan County	1,113	201	18%
Census Tract 9603.01; Chelan County	1,844	904	49%
Census Tract 9603.02; Chelan County	2,806	689	25%
Census Tract 9604; Chelan County	4,136	1,437	35%
Census Tract 9605.01; Chelan County	2,764	679	25%
Census Tract 9605.02; Chelan County	5,415	1,179	22%
Census Tract 9606; Chelan County	4,027	1,131	28%
Census Tract 9607; Chelan County	3,917	909	23%
Census Tract 9612; Chelan County	4,250	1,003	24%
Census Tract 9613.01; Chelan County	1,429	301	21%
Census Tract 9613.04; Chelan County	3,877	912	24%
Census Tract 6; Clallam County	3,748	1,273	34%
Census Tract 18; Clallam County	3,059	923	30%
Census Tract 23.01; Clallam County	1,990	400	20%
Census Tract 23.02; Clallam County	2,738	474	17%
Census Tract 401.01; Clark County	5,074	866	17%
Census Tract 401.02; Clark County	3,539	973	27%
Census Tract 402.01; Clark County	8,389	1,403	17%
Census Tract 402.02; Clark County	3,691	559	15%
Census Tract 402.03; Clark County	4,716	545	12%
Census Tract 403.01; Clark County	2,039	222	11%
Census Tract 403.04; Clark County	3,051	331	11%
Census Tract 403.05; Clark County	3,121	289	9%
Census Tract 404.16; Clark County	3,913	530	14%
Census Tract 405.04; Clark County	4,857	583	12%
Census Tract 405.10; Clark County	5,446	754	14%
Census Tract 405.11; Clark County	2,361	445	19%

Census tract	Total population	Number of low-income people	Percent of population low-income
Census Tract 406.03; Clark County	4,831	623	13%
Census Tract 406.04; Clark County	7,107	658	9%
Census Tract 9602; Columbia County	3,941	1,023	26%
Census Tract 8.02; Cowlitz County	3,447	611	18%
Census Tract 9.01; Cowlitz County	4,539	749	17%
Census Tract 9.02; Cowlitz County	3,346	934	28%
Census Tract 12; Cowlitz County	4,391	900	20%
Census Tract 15.01; Cowlitz County	3,709	1,320	36%
Census Tract 15.03; Cowlitz County	6,315	1,066	17%
Census Tract 15.04; Cowlitz County	3,586	1,407	39%
Census Tract 16.01; Cowlitz County	4,080	902	22%
Census Tract 16.02; Cowlitz County	2,725	269	10%
Census Tract 17; Cowlitz County	5,514	1,077	20%
Census Tract 18; Cowlitz County	1,848	461	25%
Census Tract 19; Cowlitz County	5,019	1,110	22%
Census Tract 20.01; Cowlitz County	4,020	643	16%
Census Tract 20.03; Cowlitz County	4,774	1,171	25%
Census Tract 20.04; Cowlitz County	1,424	265	19%
Census Tract 9800; Cowlitz County	559	262	47%
Census Tract 9501.01; Douglas County	3,559	1,580	44%
Census Tract 9501.02; Douglas County	3,401	1,568	46%
Census Tract 9502; Douglas County	2,993	661	22%
Census Tract 9503; Douglas County	7,540	1,438	19%
Census Tract 9504; Douglas County	7,243	1,197	17%
Census Tract 9506; Douglas County	4,260	612	14%
Census Tract 9701; Ferry County	2,665	1,101	41%
Census Tract 206.08; Franklin County	6,881	1,433	21%

Census tract	Total population	Number of low-income people	Percent of population low-income
Census Tract 207; Franklin County	1,258	256	20%
Census Tract 208.01; Franklin County	3,564	1,543	43%
Census Tract 208.02; Franklin County	4,643	1,738	37%
Census Tract 9703; Garfield County	2,280	642	28%
Census Tract 101; Grant County	3,388	1,217	36%
Census Tract 102; Grant County	3,338	802	24%
Census Tract 103; Grant County	5,248	1,785	34%
Census Tract 104.01; Grant County	3,310	1,274	38%
Census Tract 104.02; Grant County	5,409	2,396	44%
Census Tract 105; Grant County	3,127	656	21%
Census Tract 107; Grant County	3,154	1,238	39%
Census Tract 110.01; Grant County	6,053	1,125	19%
Census Tract 110.02; Grant County	6,142	1,749	28%
Census Tract 112; Grant County	6,773	2,013	30%
Census Tract 113; Grant County	3,423	1,294	38%
Census Tract 114.01; Grant County	2,473	1,008	41%
Census Tract 114.03; Grant County	4,382	2,502	57%
Census Tract 114.04; Grant County	1,125	349	31%
Census Tract 114.05; Grant County	3,164	1,664	53%
Census Tract 114.06; Grant County	3,196	741	23%
Census Tract 2.02; Grays Harbor County	1,529	432	28%
Census Tract 3; Grays Harbor County	3,678	1,195	32%
Census Tract 4.01; Grays Harbor County	2,787	932	33%
Census Tract 4.02; Grays Harbor County	3,595	1,085	30%
Census Tract 5.01; Grays Harbor County	3,606	1,460	40%
Census Tract 5.02; Grays Harbor County	3,250	813	25%
Census Tract 6; Grays Harbor County	4,484	916	20%

Census tract	Total population	Number of low-income people	Percent of population low-income
Census Tract 7; Grays Harbor County	4,509	1,317	29%
Census Tract 8; Grays Harbor County	4,519	619	14%
Census Tract 9; Grays Harbor County	6,032	1,947	32%
Census Tract 10; Grays Harbor County	3,852	1,572	41%
Census Tract 11; Grays Harbor County	4,371	1,852	42%
Census Tract 13; Grays Harbor County	3,549	1,642	46%
Census Tract 14; Grays Harbor County	2,127	863	41%
Census Tract 15; Grays Harbor County	4,098	1,690	41%
Census Tract 16.02; Grays Harbor County	1,207	356	29%
Census Tract 9502.02; Jefferson County	2,047	659	32%
Census Tract 9503.01; Jefferson County	3,957	539	14%
Census Tract 9503.02; Jefferson County	2,826	574	20%
Census Tract 9504; Jefferson County	3,991	1,222	31%
Census Tract 9505.01; Jefferson County	4,763	1,538	32%
Census Tract 9505.02; Jefferson County	2,712	808	30%
Census Tract 9506.02; Jefferson County	3,704	1,124	30%
Census Tract 9506.03; Jefferson County	2,960	1,216	41%
Census Tract 9507.02; Jefferson County	1,869	798	43%
Census Tract 315.01; King County	3,941	534	14%
Census Tract 315.02; King County	4,786	839	18%
Census Tract 320.03; King County	5,643	768	14%
Census Tract 321.02; King County	5,011	270	5%
Census Tract 325; King County	5,784	425	7%
Census Tract 327.05; King County	3,635	512	14%
Census Tract 327.06; King County	2,859	134	5%
Census Tract 328; King County	2,633	307	12%
Census Tract 809; Kitsap County	4,739	1,101	23%

Census tract	Total population	Number of low-income people	Percent of population low-income
Census Tract 901.01; Kitsap County	5,482	673	12%
Census Tract 901.02; Kitsap County	6,091	870	14%
Census Tract 902.02; Kitsap County	5,570	836	15%
Census Tract 905.02; Kitsap County	4,918	674	14%
Census Tract 913.01; Kitsap County	4,793	440	9%
Census Tract 913.02; Kitsap County	6,091	371	6%
Census Tract 920; Kitsap County	5,765	615	11%
Census Tract 921.01; Kitsap County	4,916	1,223	25%
Census Tract 921.02; Kitsap County	4,845	1,044	22%
Census Tract 924; Kitsap County	6,411	1,252	20%
Census Tract 927.01; Kitsap County	5,050	695	14%
Census Tract 928.01; Kitsap County	4,831	914	19%
Census Tract 928.02; Kitsap County	4,525	577	13%
Census Tract 928.03; Kitsap County	2,694	665	25%
Census Tract 929.01; Kitsap County	5,879	1,023	17%
Census Tract 929.02; Kitsap County	5,690	1,318	23%
Census Tract 9401; Kitsap County	7,012	1,550	22%
Census Tract 9751.01; Kittitas County	2,501	176	7%
Census Tract 9751.03; Kittitas County	1,424	461	32%
Census Tract 9751.04; Kittitas County	1,812	519	29%
Census Tract 9752.01; Kittitas County	3,356	926	28%
Census Tract 9752.02; Kittitas County	1,488	257	17%
Census Tract 9752.03; Kittitas County	1,299	132	10%
Census Tract 9753; Kittitas County	5,684	972	17%
Census Tract 9755; Kittitas County	5,854	1,907	33%
Census Tract 9757; Kittitas County	4,853	987	20%
Census Tract 9501.01; Klickitat County	1,630	539	33%

Census tract	Total population	Number of low-income people	Percent of population low-income
Census Tract 9501.02; Klickitat County	3,400	892	26%
Census Tract 9501.03; Klickitat County	4,157	1,584	38%
Census Tract 9502; Klickitat County	4,548	1,763	39%
Census Tract 9503.02; Klickitat County	5,644	1,474	26%
Census Tract 9701; Lewis County	3,614	655	18%
Census Tract 9702; Lewis County	3,826	818	21%
Census Tract 9703; Lewis County	6,315	2,736	43%
Census Tract 9704; Lewis County	6,172	2,529	41%
Census Tract 9707; Lewis County	4,272	1,967	46%
Census Tract 9708; Lewis County	4,419	1,505	34%
Census Tract 9710; Lewis County	3,051	800	26%
Census Tract 9711; Lewis County	4,353	872	20%
Census Tract 9712; Lewis County	3,957	1,255	32%
Census Tract 9713; Lewis County	5,907	1,465	25%
Census Tract 9714; Lewis County	3,195	558	17%
Census Tract 9715.01; Lewis County	2,913	1,141	39%
Census Tract 9715.02; Lewis County	5,099	915	18%
Census Tract 9716; Lewis County	4,387	1,087	25%
Census Tract 9717; Lewis County	4,853	1,177	24%
Census Tract 9718; Lewis County	3,901	1,477	38%
Census Tract 9719; Lewis County	3,122	923	30%
Census Tract 9720; Lewis County	2,348	677	29%
Census Tract 9601; Lincoln County	1,828	483	26%
Census Tract 9602; Lincoln County	3,303	945	29%
Census Tract 9603; Lincoln County	2,785	678	24%
Census Tract 9604; Lincoln County	2,989	1,010	34%
Census Tract 9601; Mason County	924	299	32%

Census tract	Total population	Number of low-income people	Percent of population low-income
Census Tract 9602.02; Mason County	3,401	1,292	38%
Census Tract 9603.01; Mason County	2,071	533	26%
Census Tract 9603.02; Mason County	4,435	787	18%
Census Tract 9604.01; Mason County	5,011	672	13%
Census Tract 9604.03; Mason County	3,108	474	15%
Census Tract 9605; Mason County	5,462	708	13%
Census Tract 9606; Mason County	4,181	1,336	32%
Census Tract 9610; Mason County	5,330	1,113	21%
Census Tract 9611.02; Mason County	3,864	1,342	35%
Census Tract 9612; Mason County	4,307	1,226	28%
Census Tract 9613; Mason County	4,151	1,229	30%
Census Tract 9703.03; Okanogan County	1,715	653	38%
Census Tract 9704; Okanogan County	3,927	1,411	36%
Census Tract 9705; Okanogan County	2,094	829	40%
Census Tract 9706.02; Okanogan County	3,541	952	27%
Census Tract 9708; Okanogan County	4,981	2,497	50%
Census Tract 9709; Okanogan County	3,067	935	30%
Census Tract 9710; Okanogan County	4,028	1,201	30%
Census Tract 9502; Pacific County	4,811	1,643	34%
Census Tract 9503.01; Pacific County	2,259	760	34%
Census Tract 9504; Pacific County	3,861	1,260	33%
Census Tract 9701; Pend Oreille County	1,674	531	32%
Census Tract 9702; Pend Oreille County	2,767	934	34%
Census Tract 9703; Pend Oreille County	3,386	1,418	42%
Census Tract 9704; Pend Oreille County	2,827	791	28%
Census Tract 9705; Pend Oreille County	2,727	896	33%
Census Tract 701; Pierce County	3,833	335	9%

Census tract	Total population	Number of low-income people	Percent of population low-income
Census Tract 725.03; Pierce County	4,679	726	16%
Census Tract 725.04; Pierce County	3,923	217	6%
Census Tract 725.06; Pierce County	3,814	379	10%
Census Tract 725.08; Pierce County	3,868	396	10%
Census Tract 726.01; Pierce County	5,031	625	12%
Census Tract 726.02; Pierce County	3,928	899	23%
Census Tract 726.03; Pierce County	6,469	1,621	25%
Census Tract 731.19; Pierce County	3,025	393	13%
Census Tract 732; Pierce County	6,608	1,606	24%
Census Tract 9508.02; Skagit County	2,963	314	11%
Census Tract 9508.03; Skagit County	1,441	80	6%
Census Tract 9509; Skagit County	4,774	1,364	29%
Census Tract 9510; Skagit County	2,840	724	25%
Census Tract 9511.01; Skagit County	1,936	711	37%
Census Tract 9511.02; Skagit County	3,460	1,002	29%
Census Tract 9512; Skagit County	3,344	356	11%
Census Tract 9513; Skagit County	1,982	562	28%
Census Tract 9527; Skagit County	3,756	531	14%
Census Tract 9501; Skamania County	43	11	26%
Census Tract 9502; Skamania County	4,884	923	19%
Census Tract 9503; Skamania County	2,138	463	22%
Census Tract 9504; Skamania County	2,407	569	24%
Census Tract 9505; Skamania County	2,533	781	31%
Census Tract 532.01; Snohomish County	4,746	956	20%
Census Tract 533.01; Snohomish County	7,828	2,097	27%
Census Tract 533.02; Snohomish County	6,750	1,471	22%
Census Tract 534; Snohomish County	6,126	479	8%

Census tract	Total population	Number of low-income people	Percent of population low-income
Census Tract 535.06; Snohomish County	5,754	1,108	19%
Census Tract 536.06; Snohomish County	3,409	387	11%
Census Tract 537; Snohomish County	3,190	926	29%
Census Tract 538.01; Snohomish County	3,622	614	17%
Census Tract 538.03; Snohomish County	5,476	1,083	20%
Census Tract 50; Spokane County	5,194	1,422	27%
Census Tract 101.01; Spokane County	3,959	249	6%
Census Tract 101.02; Spokane County	2,823	272	10%
Census Tract 102.01; Spokane County	4,291	1,079	25%
Census Tract 102.04; Spokane County	3,448	1,149	33%
Census Tract 103.03; Spokane County	3,580	809	23%
Census Tract 103.04; Spokane County	5,574	1,926	35%
Census Tract 104.01; Spokane County	6,582	3,413	52%
Census Tract 104.03; Spokane County	3,598	1,083	30%
Census Tract 104.04; Spokane County	2,980	464	16%
Census Tract 105.08; Spokane County	4,515	334	7%
Census Tract 112.02; Spokane County	4,025	1,013	25%
Census Tract 114; Spokane County	5,713	1,391	24%
Census Tract 123; Spokane County	5,490	1,988	36%
Census Tract 124.01; Spokane County	6,048	799	13%
Census Tract 124.02; Spokane County	7,137	1,327	19%
Census Tract 131.02; Spokane County	5,844	1,230	21%
Census Tract 132.01; Spokane County	7,160	1,558	22%
Census Tract 132.03; Spokane County	2,841	285	10%
Census Tract 132.04; Spokane County	5,414	626	12%
Census Tract 132.05; Spokane County	4,261	858	20%
Census Tract 133; Spokane County	3,318	406	12%

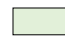
Census tract	Total population	Number of low-income people	Percent of population low-income
Census Tract 134.01; Spokane County	5,899	702	12%
Census Tract 135.01; Spokane County	2,121	532	25%
Census Tract 135.02; Spokane County	2,192	205	9%
Census Tract 135.03; Spokane County	6,189	710	11%
Census Tract 136; Spokane County	5,177	1,317	25%
Census Tract 137; Spokane County	3,746	808	22%
Census Tract 139; Spokane County	5,318	792	15%
Census Tract 140.02; Spokane County	5,994	2,537	42%
Census Tract 141; Spokane County	6,853	1,522	22%
Census Tract 142; Spokane County	3,861	1,158	30%
Census Tract 143; Spokane County	2,961	1,023	35%
Census Tract 9501.01; Stevens County	4,778	1,705	36%
Census Tract 9501.02; Stevens County	3,426	614	18%
Census Tract 9502; Stevens County	4,445	1,485	33%
Census Tract 9506; Stevens County	2,523	680	27%
Census Tract 9508; Stevens County	3,435	997	29%
Census Tract 9509; Stevens County	1,663	694	42%
Census Tract 9511; Stevens County	4,023	1,881	47%
Census Tract 9513.01; Stevens County	2,788	558	20%
Census Tract 9513.02; Stevens County	1,495	294	20%
Census Tract 9514.01; Stevens County	4,082	1,291	32%
Census Tract 9514.02; Stevens County	4,486	563	13%
Census Tract 116.24; Thurston County	4,566	530	12%
Census Tract 117.20; Thurston County	5,966	577	10%
Census Tract 118.10; Thurston County	4,299	669	16%
Census Tract 118.21; Thurston County	5,551	1,373	25%
Census Tract 118.22; Thurston County	3,987	707	18%

Census tract	Total population	Number of low-income people	Percent of population low-income
Census Tract 119.01; Thurston County	2,403	292	12%
Census Tract 119.02; Thurston County	4,936	592	12%
Census Tract 121; Thurston County	4,777	495	10%
Census Tract 122.11; Thurston County	2,918	636	22%
Census Tract 122.21; Thurston County	8,341	1,499	18%
Census Tract 122.25; Thurston County	5,389	843	16%
Census Tract 124.12; Thurston County	6,237	1,394	22%
Census Tract 124.20; Thurston County	4,262	300	7%
Census Tract 124.21; Thurston County	2,815	342	12%
Census Tract 125.10; Thurston County	3,571	812	23%
Census Tract 125.30; Thurston County	4,758	1,149	24%
Census Tract 125.31; Thurston County	3,762	865	23%
Census Tract 125.32; Thurston County	3,211	652	20%
Census Tract 126.10; Thurston County	6,402	879	14%
Census Tract 126.20; Thurston County	4,616	1,341	29%
Census Tract 127.10; Thurston County	2,261	193	9%
Census Tract 127.20; Thurston County	7,374	2,162	29%
Census Tract 127.30; Thurston County	6,171	1,537	25%
Census Tract 9501; Wahkiakum County	4,436	1,731	39%
Census Tract 9200; Walla Walla County	5,856	2,083	36%
Census Tract 9201; Walla Walla County	5,095	1,424	28%
Census Tract 9209.01; Walla Walla County	4,187	1,112	27%
Census Tract 9209.02; Walla Walla County	5,583	917	16%
Census Tract 1.01; Whatcom County	3,442	741	22%
Census Tract 2.01; Whatcom County	4,125	1,837	45%
Census Tract 8.05; Whatcom County	5,059	883	17%
Census Tract 8.07; Whatcom County	3,110	412	13%

Census tract	Total population	Number of low-income people	Percent of population low-income
Census Tract 8.09; Whatcom County	2,681	259	10%
Census Tract 9.02; Whatcom County	7,008	667	10%
Census Tract 12.02; Whatcom County	4,024	926	23%
Census Tract 101.01; Whatcom County	2,704	693	26%
Census Tract 101.03; Whatcom County	2,441	549	22%
Census Tract 102.01; Whatcom County	3,121	626	20%
Census Tract 102.02; Whatcom County	5,364	1,365	25%
Census Tract 103.01; Whatcom County	7,057	1,074	15%
Census Tract 103.02; Whatcom County	4,757	1,370	29%
Census Tract 103.03; Whatcom County	7,703	1,960	25%
Census Tract 104.07; Whatcom County	3,226	396	12%
Census Tract 104.08; Whatcom County	2,732	230	8%
Census Tract 105.03; Whatcom County	6,235	1,884	30%
Census Tract 105.05; Whatcom County	5,535	1,533	28%
Census Tract 105.06; Whatcom County	3,220	980	30%
Census Tract 106; Whatcom County	7,683	958	12%
Census Tract 107.01; Whatcom County	6,260	853	14%
Census Tract 107.02; Whatcom County	5,058	1,128	22%
Census Tract 2.01; Whitman County	4,423	1,451	33%
Census Tract 2.02; Whitman County	1,924	544	28%
Census Tract 3; Whitman County	6,564	1,591	24%
Census Tract 4; Whitman County	4,292	1,289	30%
Census Tract 6.02; Whitman County	3,532	2,616	74%
Census Tract 7; Whitman County	3,434	721	21%
Census Tract 8; Whitman County	3,380	864	26%
Census Tract 9; Whitman County	3,711	1,298	35%
Census Tract 10; Whitman County	2,054	546	27%

Census tract	Total population	Number of low-income people	Percent of population low-income
Census Tract 16.01; Yakima County	2,635	917	35%
Census Tract 17.01; Yakima County	3,925	1,856	47%
Census Tract 18.01; Yakima County	4,310	1,772	41%
Census Tract 21.01; Yakima County	2,313	870	38%
Census Tract 22.02; Yakima County	2,155	730	34%
Census Tract 27.01; Yakima County	3,485	1,656	48%
Census Tract 29; Yakima County	6,673	2,647	40%
Census Tract 30.02; Yakima County	4,029	1,327	33%
Census Tract 30.03; Yakima County	1,715	421	25%
Census Tract 30.04; Yakima County	2,842	748	26%

Table 1-3. Overburdened community areas in census tracts overlapping the study area

 Census tract that meets the criteria to be identified as an overburdened community area.

Census tract ¹	Tribal land	Meets EHD criteria	Meets CEJST criteria ²
Census Tract 9501, Adams County	N	N	Y
Census Tract 9502, Adams County	N	N	Y
Census Tract 9503, Adams County	N	N	Y
Census Tract 9505, Adams County	N	N	Y
Census Tract 9601, Asotin County	N	N	N
Census Tract 9602, Asotin County	N	N	N
Census Tract 107.01, Benton County	N	N	N
Census Tract 108.07, Benton County	N	N	N
Census Tract 108.11, Benton County	N	N	N
Census Tract 108.14, Benton County	N	N	N
Census Tract 115.01, Benton County	N	Y	N
Census Tract 115.03, Benton County	N	N	N
Census Tract 115.04, Benton County	N	N	N
Census Tract 116, Benton County	N	N	Y
Census Tract 117, Benton County	N	N	Y
Census Tract 118, Benton County	N	N	N
Census Tract 119, Benton County	N	N	N
Census Tract 120, Benton County	N	N	N
Census Tract 9601, Chelan County	N	N	N
Census Tract 9602, Chelan County	N	N	N
Census Tract 9603, Chelan County	N	N	Y
Census Tract 9604, Chelan County	N	N	Y
Census Tract 9605, Chelan County	N	N	N
Census Tract 9606, Chelan County	N	N	N

Census tract ¹	Tribal land	Meets EHD criteria	Meets CEJST criteria ²
Census Tract 9607, Chelan County	N	N	N
Census Tract 9612, Chelan County	N	N	N
Census Tract 9613.01, Chelan County	N	N	N
Census Tract 9613.02, Chelan County	N	N	N
Census Tract 18, Clallam County	N	N	N
Census Tract 23, Clallam County	N	N	N
Census Tract 6, Clallam County	N	N	N
Census Tract 401.01, Clark County	N	N	N
Census Tract 401.02, Clark County	N	N	N
Census Tract 402.01, Clark County	N	N	N
Census Tract 402.02, Clark County	N	N	N
Census Tract 402.03, Clark County	N	N	N
Census Tract 403.01, Clark County	N	N	N
Census Tract 403.02, Clark County	N	N	N
Census Tract 404.16, Clark County	N	N	N
Census Tract 405.04, Clark County	N	N	N
Census Tract 405.10, Clark County	N	N	N
Census Tract 405.11, Clark County	N	N	N
Census Tract 406.03, Clark County	N	N	N
Census Tract 406.04, Clark County	N	N	N
Census Tract 9602, Columbia County	N	N	N
Census Tract 12, Cowlitz County	N	N	N
Census Tract 15.01, Cowlitz County	N	N	N
Census Tract 15.02, Cowlitz County	N	N	N
Census Tract 16, Cowlitz County	N	N	N
Census Tract 17, Cowlitz County	N	N	N

Census tract ¹	Tribal land	Meets EHD criteria	Meets CEJST criteria ²
Census Tract 18, Cowlitz County	N	N	Y
Census Tract 19, Cowlitz County	N	N	N
Census Tract 20.01, Cowlitz County	N	N	N
Census Tract 20.02, Cowlitz County	N	N	N
Census Tract 8, Cowlitz County	N	N	N
Census Tract 9, Cowlitz County	N	N	N
Census Tract 9501, Douglas County	Y	N	Y
Census Tract 9502, Douglas County	N	N	N
Census Tract 9503, Douglas County	N	N	N
Census Tract 9504, Douglas County	N	N	N
Census Tract 9506, Douglas County	N	N	N
Census Tract 9701, Ferry County	Y	N	Y
Census Tract 206.01, Franklin County	N	N	N
Census Tract 207, Franklin County	N	Y	N
Census Tract 208, Franklin County	N	N	Y
Census Tract 9703, Garfield County	N	N	N
Census Tract 101, Grant County	Y	N	Y
Census Tract 102, Grant County	N	N	N
Census Tract 103, Grant County	N	N	Y
Census Tract 104, Grant County	N	N	Y
Census Tract 105, Grant County	N	N	N
Census Tract 107, Grant County	N	N	Y
Census Tract 110, Grant County	N	N	N
Census Tract 112, Grant County	N	N	N
Census Tract 113, Grant County	N	N	Y
Census Tract 114.01, Grant County	N	N	Y

Census tract ¹	Tribal land	Meets EHD criteria	Meets CEJST criteria ²
Census Tract 114.02, Grant County	N	N	Y
Census Tract 10, Grays Harbor County	N	N	N
Census Tract 11, Grays Harbor County	N	N	N
Census Tract 13, Grays Harbor County	N	N	N
Census Tract 14, Grays Harbor County	N	N	N
Census Tract 15, Grays Harbor County	N	N	N
Census Tract 16, Grays Harbor County	N	N	N
Census Tract 2, Grays Harbor County	N	N	N
Census Tract 3, Grays Harbor County	N	N	N
Census Tract 4, Grays Harbor County	N	N	N
Census Tract 5, Grays Harbor County	N	N	N
Census Tract 6, Grays Harbor County	N	N	N
Census Tract 7, Grays Harbor County	N	N	N
Census Tract 8, Grays Harbor County	N	N	N
Census Tract 9, Grays Harbor County	N	N	N
Census Tract 9502.02, Jefferson County	N	N	N
Census Tract 9503, Jefferson County	N	N	N
Census Tract 9504, Jefferson County	N	N	N
Census Tract 9505, Jefferson County	N	N	N
Census Tract 9506.02, Jefferson County	N	N	N
Census Tract 9507.02, Jefferson County	N	N	N
Census Tract 315.01, King County	N	N	N
Census Tract 315.02, King County	N	N	N
Census Tract 320.03, King County	N	N	N
Census Tract 321.02, King County	N	N	N
Census Tract 325, King County	N	N	N

Census tract ¹	Tribal land	Meets EHD criteria	Meets CEJST criteria ²
Census Tract 327.02, King County	N	N	N
Census Tract 328, King County	N	N	N
Census Tract 809, Kitsap County	N	N	N
Census Tract 901.01, Kitsap County	N	N	N
Census Tract 901.02, Kitsap County	N	N	N
Census Tract 902.02, Kitsap County	N	N	N
Census Tract 905.02, Kitsap County	N	N	N
Census Tract 913.01, Kitsap County	N	N	N
Census Tract 913.02, Kitsap County	N	N	N
Census Tract 920, Kitsap County	N	N	N
Census Tract 921, Kitsap County	N	N	N
Census Tract 924, Kitsap County	N	N	N
Census Tract 927.01, Kitsap County	N	N	N
Census Tract 928.01, Kitsap County	N	N	N
Census Tract 928.02, Kitsap County	N	N	N
Census Tract 928.03, Kitsap County	N	N	N
Census Tract 929.01, Kitsap County	N	N	N
Census Tract 929.02, Kitsap County	N	N	N
Census Tract 9401, Kitsap County	N	N	N
Census Tract 9751, Kittitas County	N	N	N
Census Tract 9752, Kittitas County	N	N	N
Census Tract 9753, Kittitas County	N	N	N
Census Tract 9754.02, Kittitas County	N	N	N
Census Tract 9755, Kittitas County	N	N	N
Census Tract 9757, Kittitas County	N	N	N
Census Tract 9501, Klickitat County	Y	N	Y

Census tract ¹	Tribal land	Meets EHD criteria	Meets CEJST criteria ²
Census Tract 9502, Klickitat County	Y	N	Y
Census Tract 9503, Klickitat County	Y	N	N
Census Tract 9701, Lewis County	N	N	N
Census Tract 9702, Lewis County	N	N	N
Census Tract 9703, Lewis County	N	N	N
Census Tract 9704, Lewis County	N	N	N
Census Tract 9707, Lewis County	N	N	N
Census Tract 9708, Lewis County	N	N	N
Census Tract 9710, Lewis County	N	N	N
Census Tract 9711, Lewis County	N	N	N
Census Tract 9712, Lewis County	N	N	N
Census Tract 9713, Lewis County	N	N	N
Census Tract 9714, Lewis County	N	N	N
Census Tract 9715, Lewis County	N	N	N
Census Tract 9716, Lewis County	N	N	N
Census Tract 9717, Lewis County	N	N	N
Census Tract 9718, Lewis County	N	N	Y
Census Tract 9719, Lewis County	N	N	Y
Census Tract 9720, Lewis County	Y	N	N
Census Tract 9601, Lincoln County	N	N	N
Census Tract 9602, Lincoln County	Y	N	N
Census Tract 9603, Lincoln County	Y	N	N
Census Tract 9604, Lincoln County	N	N	Y
Census Tract 9601, Mason County	N	N	N
Census Tract 9602, Mason County	N	N	N
Census Tract 9603, Mason County	N	N	N

Census tract ¹	Tribal land	Meets EHD criteria	Meets CEJST criteria ²
Census Tract 9604, Mason County	N	N	N
Census Tract 9605, Mason County	N	N	N
Census Tract 9606, Mason County	N	N	N
Census Tract 9610, Mason County	N	N	N
Census Tract 9611, Mason County	N	N	N
Census Tract 9612, Mason County	N	N	N
Census Tract 9613, Mason County	N	N	N
Census Tract 9703, Okanogan County	Y	N	Y
Census Tract 9704, Okanogan County	N	N	Y
Census Tract 9705, Okanogan County	Y	N	Y
Census Tract 9706, Okanogan County	Y	N	Y
Census Tract 9707, Okanogan County	Y	N	Y
Census Tract 9708, Okanogan County	Y	N	Y
Census Tract 9709, Okanogan County	N	N	N
Census Tract 9710, Okanogan County	N	N	Y
Census Tract 9502, Pacific County	N	N	N
Census Tract 9503, Pacific County	N	N	N
Census Tract 9504, Pacific County	N	N	N
Census Tract 9701, Pend Oreille County	N	N	Y
Census Tract 9702, Pend Oreille County	Y	N	Y
Census Tract 9703, Pend Oreille County	N	N	Y
Census Tract 9704, Pend Oreille County	N	N	Y
Census Tract 9705, Pend Oreille County	N	N	N
Census Tract 701, Pierce County	N	N	N
Census Tract 725.03, Pierce County	N	N	N
Census Tract 725.04, Pierce County	N	N	N
Census Tract 725.05, Pierce County	N	N	N
Census Tract 725.06, Pierce County	N	N	N

Census tract ¹	Tribal land	Meets EHD criteria	Meets CEJST criteria ²
Census Tract 726.01, Pierce County	N	N	N
Census Tract 726.02, Pierce County	N	N	N
Census Tract 726.03, Pierce County	N	N	N
Census Tract 731.19, Pierce County	N	N	N
Census Tract 732, Pierce County	N	N	N
Census Tract 9508, Skagit County	N	N	N
Census Tract 9509, Skagit County	N	N	N
Census Tract 9510, Skagit County	N	N	N
Census Tract 9511, Skagit County	N	N	N
Census Tract 9512, Skagit County	N	N	N
Census Tract 9513, Skagit County	N	N	N
Census Tract 9527, Skagit County	N	N	N
Census Tract 9501, Skamania County	N	N	N
Census Tract 9502, Skamania County	N	N	N
Census Tract 9503, Skamania County	N	N	N
Census Tract 9504, Skamania County	N	N	N
Census Tract 9505, Skamania County	N	N	N
Census Tract 532.01, Snohomish County	N	N	N
Census Tract 533.01, Snohomish County	N	N	N
Census Tract 533.02, Snohomish County	N	N	N
Census Tract 534, Snohomish County	N	N	N
Census Tract 535.06, Snohomish County	N	N	N
Census Tract 536.02, Snohomish County	N	N	N
Census Tract 537, Snohomish County	N	N	N
Census Tract 538.01, Snohomish County	N	N	N
Census Tract 538.03, Snohomish County	N	N	N
Census Tract 101, Spokane County	N	N	N
Census Tract 102.01, Spokane County	N	N	N

Census tract ¹	Tribal land	Meets EHD criteria	Meets CEJST criteria ²
Census Tract 102.02, Spokane County	N	N	N
Census Tract 103.03, Spokane County	N	N	N
Census Tract 103.04, Spokane County	N	N	N
Census Tract 104.01, Spokane County	N	N	Y
Census Tract 104.02, Spokane County	N	N	N
Census Tract 105.03, Spokane County	N	N	N
Census Tract 112.02, Spokane County	N	N	N
Census Tract 114, Spokane County	N	Y	N
Census Tract 123, Spokane County	N	Y	N
Census Tract 124.01, Spokane County	N	N	N
Census Tract 124.02, Spokane County	N	N	N
Census Tract 131, Spokane County	N	Y	N
Census Tract 132.01, Spokane County	N	Y	N
Census Tract 132.02, Spokane County	N	N	N
Census Tract 133, Spokane County	N	N	N
Census Tract 134.01, Spokane County	N	N	N
Census Tract 135, Spokane County	N	N	N
Census Tract 136, Spokane County	N	N	N
Census Tract 137, Spokane County	N	N	N
Census Tract 138, Spokane County	N	N	N
Census Tract 139, Spokane County	N	N	N
Census Tract 140.02, Spokane County	N	N	N
Census Tract 141, Spokane County	N	N	N
Census Tract 142, Spokane County	N	N	N
Census Tract 143, Spokane County	N	N	Y
Census Tract 50, Spokane County	N	N	N
Census Tract 9501, Stevens County	Y	N	Y
Census Tract 9502, Stevens County	N	N	N

Census tract ¹	Tribal land	Meets EHD criteria	Meets CEJST criteria ²
Census Tract 9506, Stevens County	N	N	N
Census Tract 9508, Stevens County	N	N	Y
Census Tract 9509, Stevens County	Y	N	Y
Census Tract 9511, Stevens County	Y	N	Y
Census Tract 9513, Stevens County	Y	N	N
Census Tract 9514, Stevens County	Y	N	N
Census Tract 116.24, Thurston County	N	N	N
Census Tract 117.10, Thurston County	N	N	N
Census Tract 117.20, Thurston County	N	N	N
Census Tract 118.10, Thurston County	N	N	N
Census Tract 118.21, Thurston County	N	N	N
Census Tract 118.22, Thurston County	N	N	N
Census Tract 119, Thurston County	N	N	N
Census Tract 121, Thurston County	N	N	N
Census Tract 122.11, Thurston County	N	N	N
Census Tract 122.21, Thurston County	N	N	N
Census Tract 122.22, Thurston County	N	N	N
Census Tract 124.11, Thurston County	N	N	N
Census Tract 124.12, Thurston County	N	N	N
Census Tract 124.20, Thurston County	N	N	N
Census Tract 125.10, Thurston County	N	N	N
Census Tract 125.20, Thurston County	N	N	N
Census Tract 125.30, Thurston County	N	N	N
Census Tract 126.10, Thurston County	N	N	N
Census Tract 126.20, Thurston County	N	N	N
Census Tract 127.10, Thurston County	N	N	N
Census Tract 127.20, Thurston County	N	N	N
Census Tract 127.30, Thurston County	N	N	N

Census tract ¹	Tribal land	Meets EHD criteria	Meets CEJST criteria ²
Census Tract 9501, Wahkiakum County	N	N	N
Census Tract 9200, Walla Walla County	N	Y	Y
Census Tract 9201, Walla Walla County	N	N	N
Census Tract 9209, Walla Walla County	N	N	N
Census Tract 1, Whatcom County	N	N	N
Census Tract 101, Whatcom County	N	N	N
Census Tract 102, Whatcom County	N	N	N
Census Tract 103.01, Whatcom County	N	N	N
Census Tract 103.02, Whatcom County	N	N	N
Census Tract 103.03, Whatcom County	N	N	N
Census Tract 104.01, Whatcom County	N	N	N
Census Tract 104.04, Whatcom County	N	N	N
Census Tract 105.01, Whatcom County	N	N	N
Census Tract 105.02, Whatcom County	N	N	N
Census Tract 106, Whatcom County	N	N	N
Census Tract 107.01, Whatcom County	N	N	N
Census Tract 107.02, Whatcom County	N	N	N
Census Tract 12.02, Whatcom County	N	N	N
Census Tract 2, Whatcom County	N	N	N
Census Tract 8.05, Whatcom County	N	N	N
Census Tract 8.06, Whatcom County	N	N	N
Census Tract 9.02, Whatcom County	N	N	N
Census Tract 10, Whitman County	N	N	N
Census Tract 2, Whitman County	N	N	N
Census Tract 3, Whitman County	N	N	N
Census Tract 4, Whitman County	N	N	N
Census Tract 6, Whitman County	N	N	N
Census Tract 7, Whitman County	N	N	N

Census tract ¹	Tribal land	Meets EHD criteria	Meets CEJST criteria ²
Census Tract 8, Whitman County	N	N	N
Census Tract 9, Whitman County	N	N	Y
Census Tract 16.01, Yakima County	N	N	N
Census Tract 17.01, Yakima County	N	N	Y
Census Tract 18, Yakima County	Y	N	Y
Census Tract 21.01, Yakima County	N	N	N
Census Tract 22, Yakima County	Y	N	N
Census Tract 27.01, Yakima County	Y	N	N
Census Tract 29, Yakima County	N	N	Y
Census Tract 30.01, Yakima County	Y	N	N
Census Tract 30.02, Yakima County	N	N	N

Notes:

1. Census tract data used to identify overburdened community areas were from the 2010 census, which has some differences in census tract numbers, boundaries, and areas compared to census tract boundaries from the 2020 census. The 2022 U.S. Census Bureau ACS 5-year estimate data were used to identify people of color and low-income populations in Tables 1-1 and 1-2.
2. CEJST is no longer available from the federal government; however, the data for this report were obtained from the Overburdened Communities of Washington State dataset (OFM 2024).

CEJST: Climate and Economic Justice Screening Tool

N: No

Y: Yes