

**Board of Pilotage Commissioners Tug Escort Rulemaking (Chapter 363-116 WAC)
State Environmental Policy Act Draft Environmental Impact Statement**

Additional Maps of Escort Tug Underway Time

Washington State Board of Pilotage Commissioners

Washington State Department of Ecology

Olympia, WA

June 2025



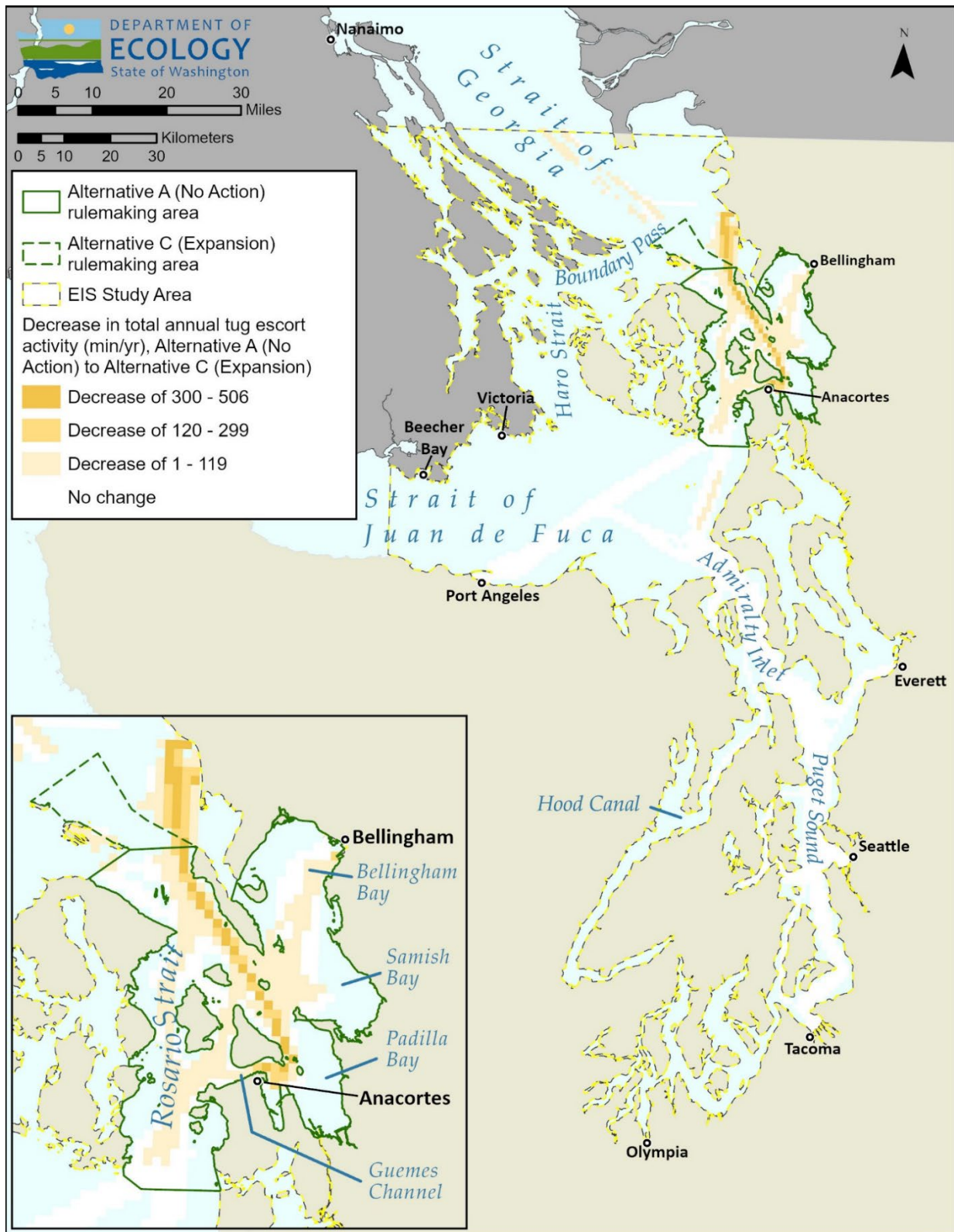


Figure 1. This map shows areas where modeled escort tug underway time decreased between Alternative A (No Action) and Alternative C (Expansion).

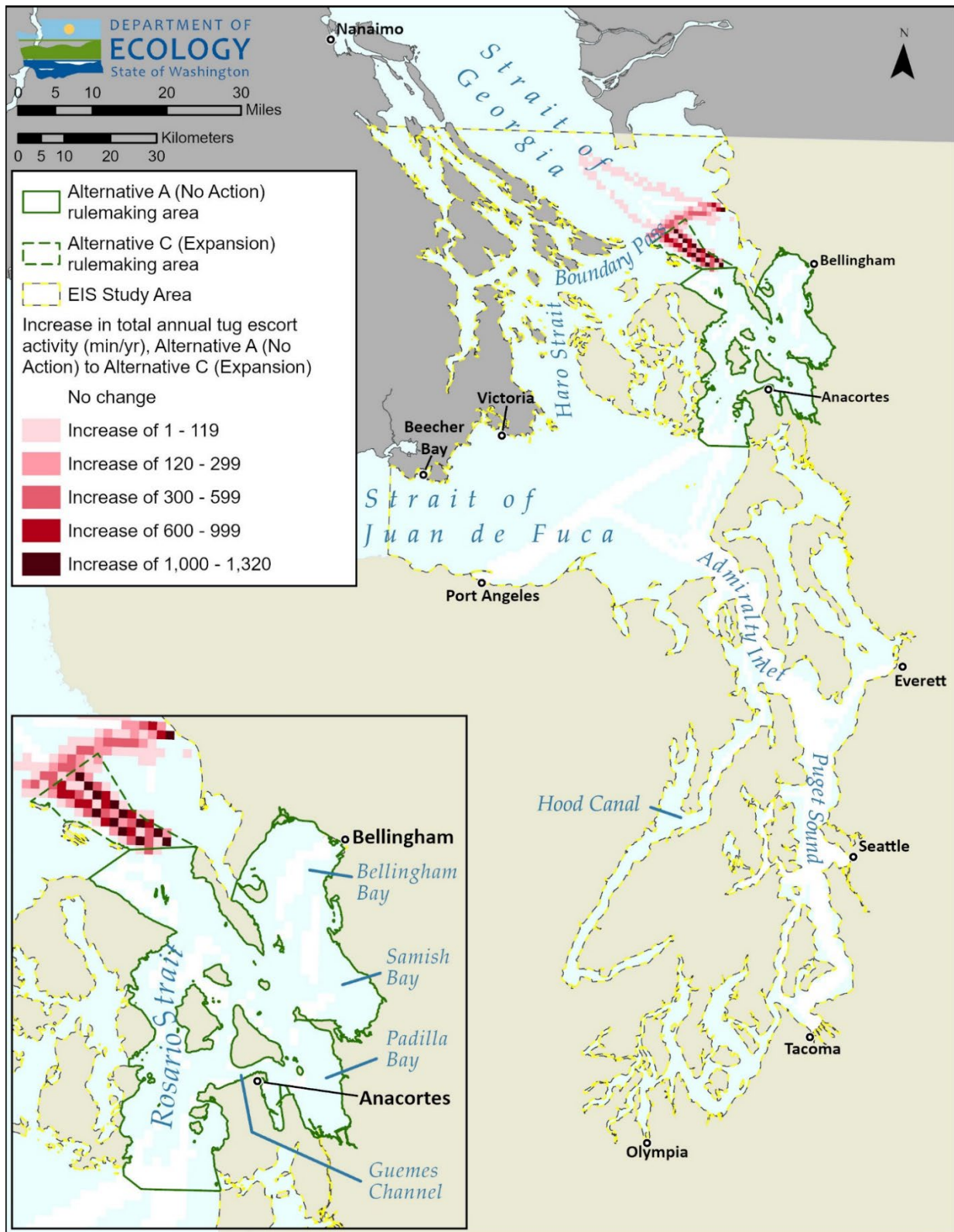


Figure 2. This map shows areas where modeled escort tug underway time increased between Alternative A (No Action) and Alternative C (Expansion).

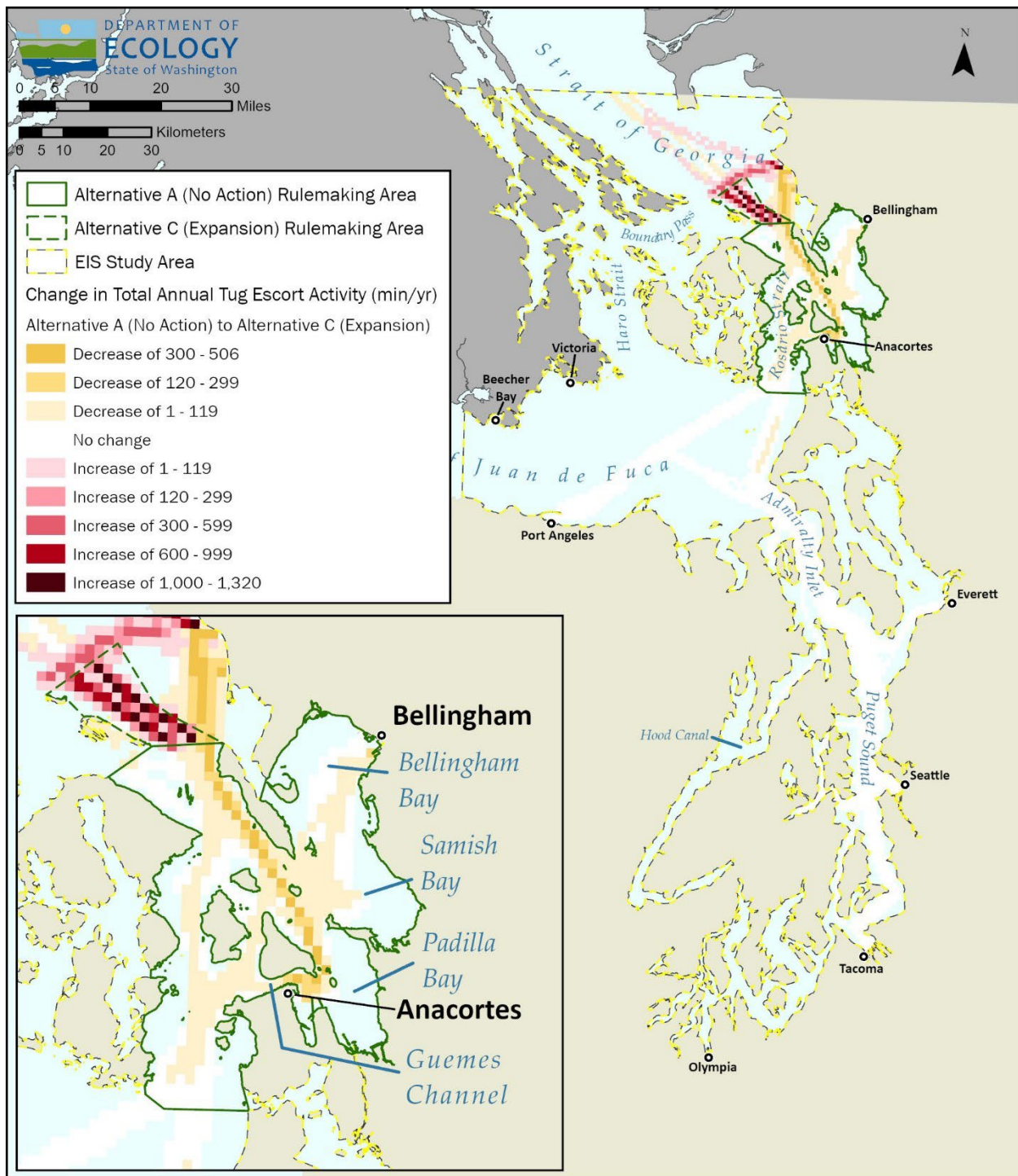


Figure 3. This map shows both areas where modeled escort tug underway time increased and where it decreased between Alternative A (No Action) and Alternative C (Expansion). This map appears in the Transportation: Vessel Traffic section.

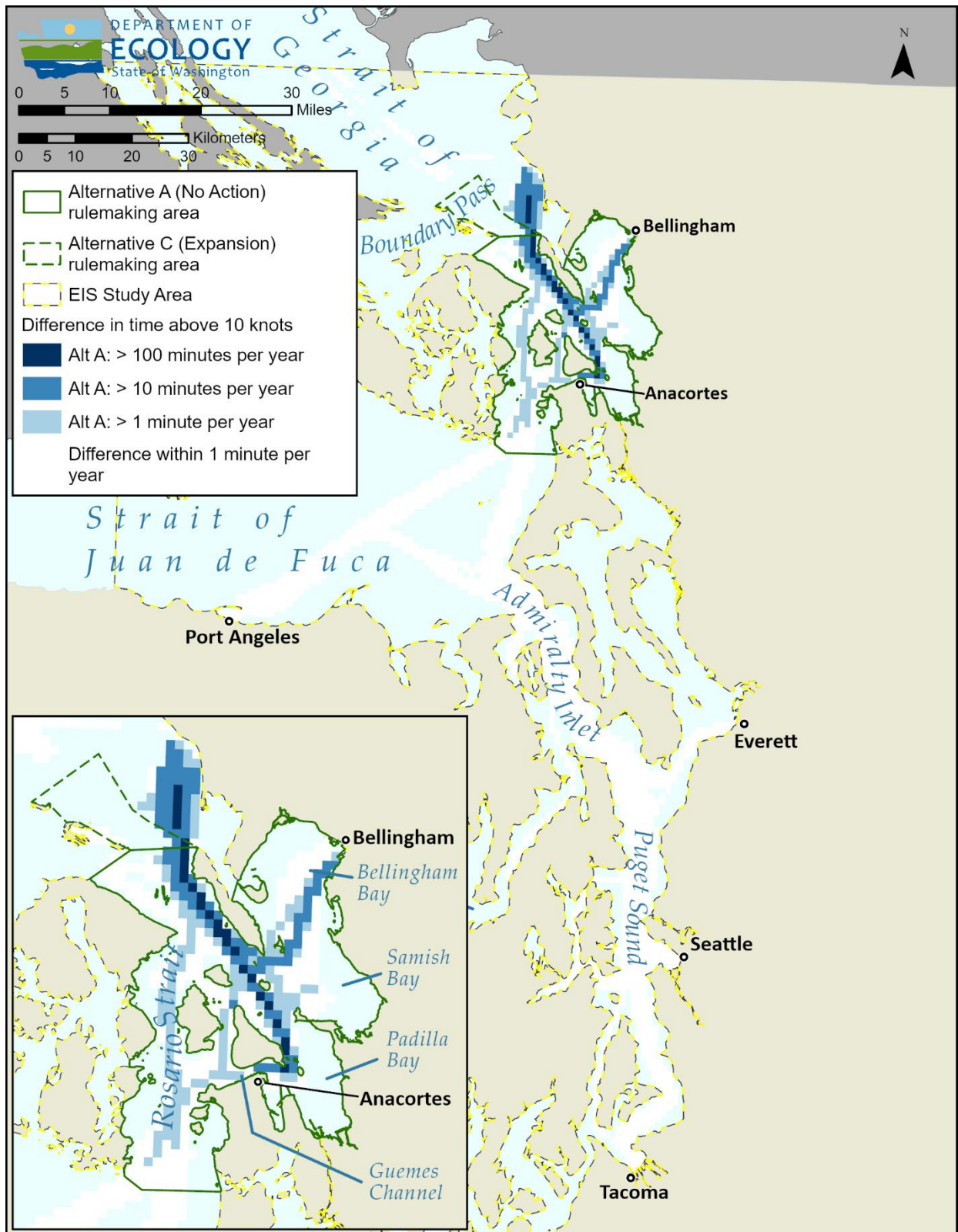


Figure 4. Areas where escort tug time spent traveling at over 10 knots is higher in Alternative A than in Alternative C.

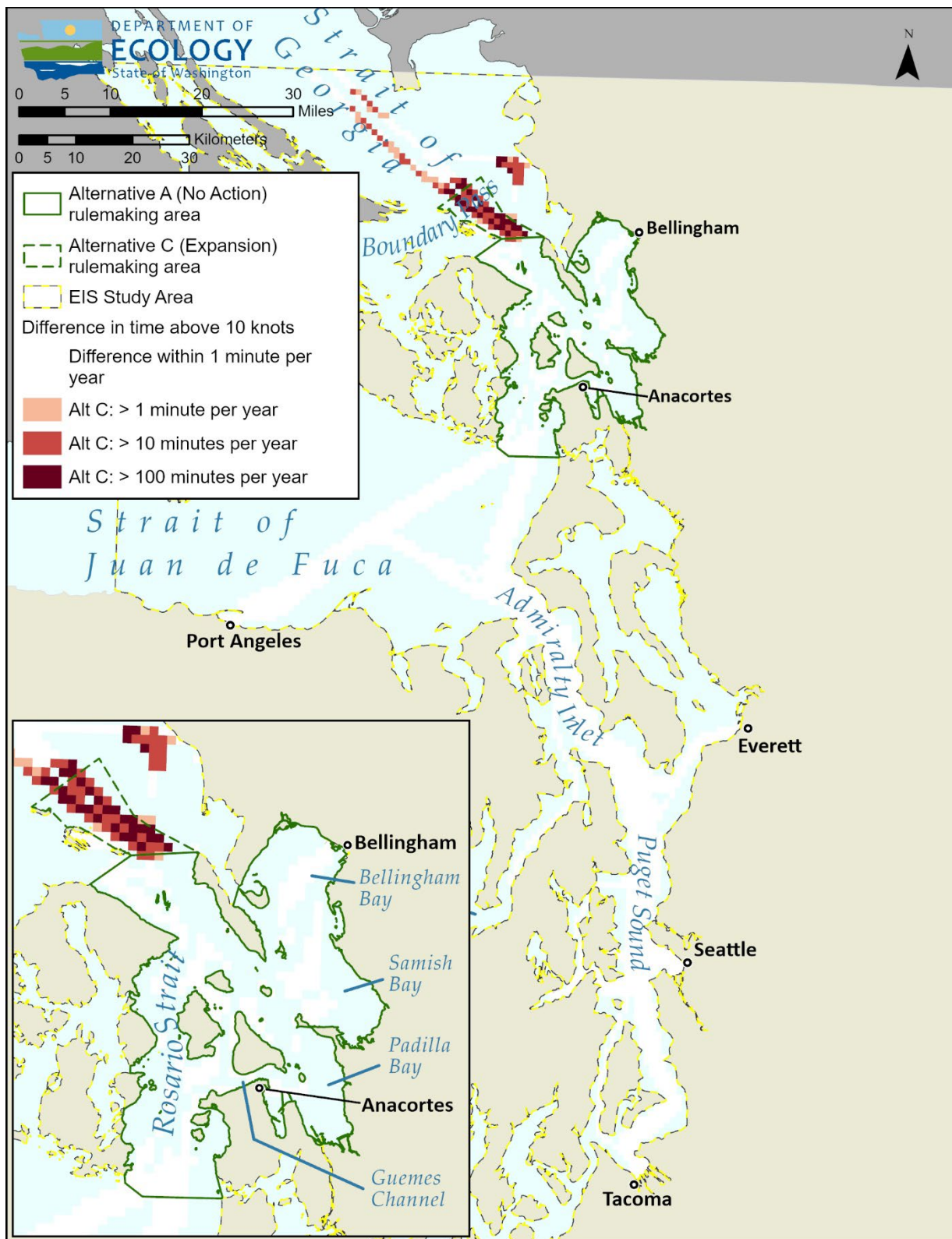


Figure 5. Areas where escort tug time spent traveling at over 10 knots is higher in Alternative C than in Alternative A.

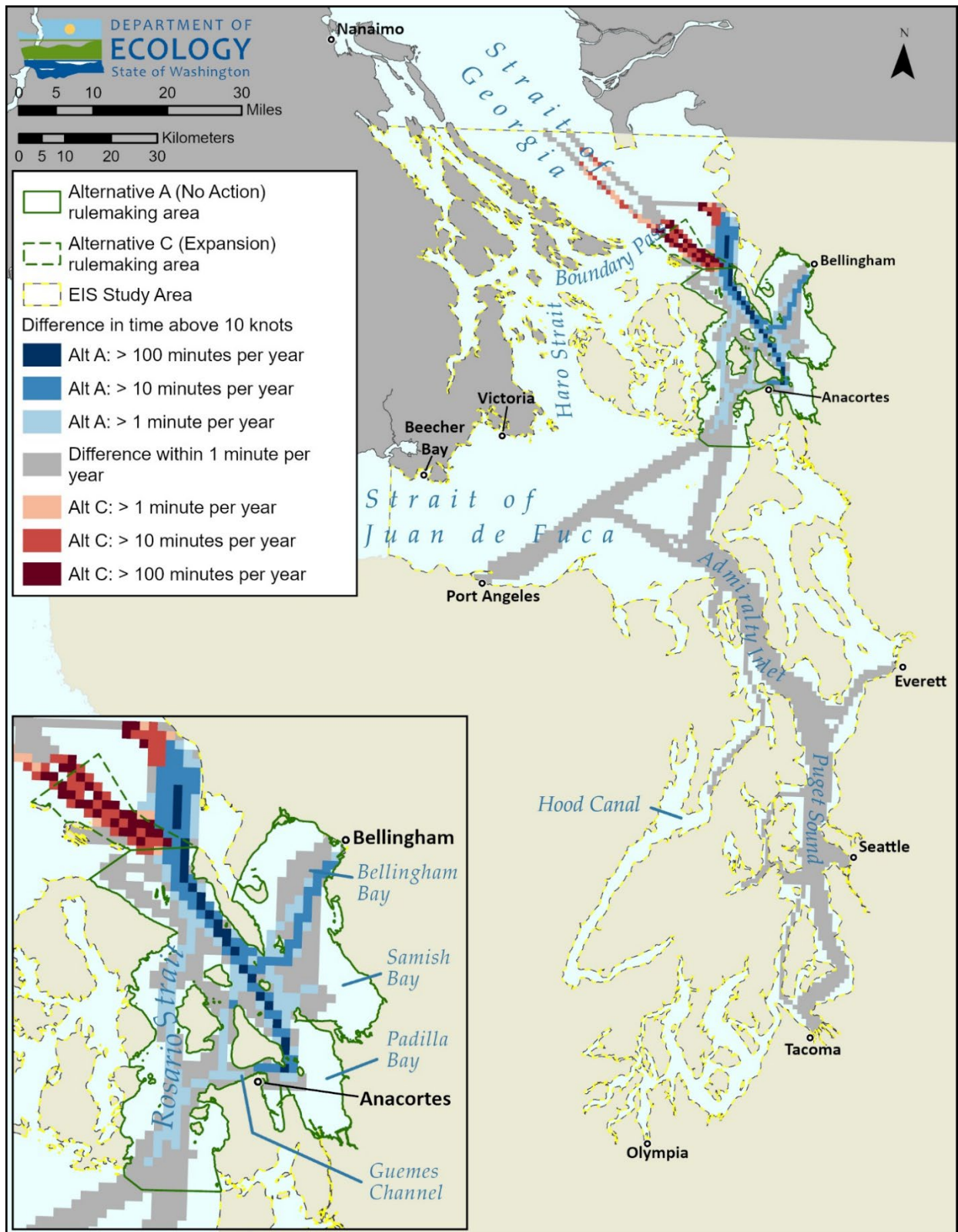


Figure 6. Time that escort tugs travel at speeds exceeding 10 knots (difference between Alternative A and Alternative C). This map appears in the Plants and Animals section.

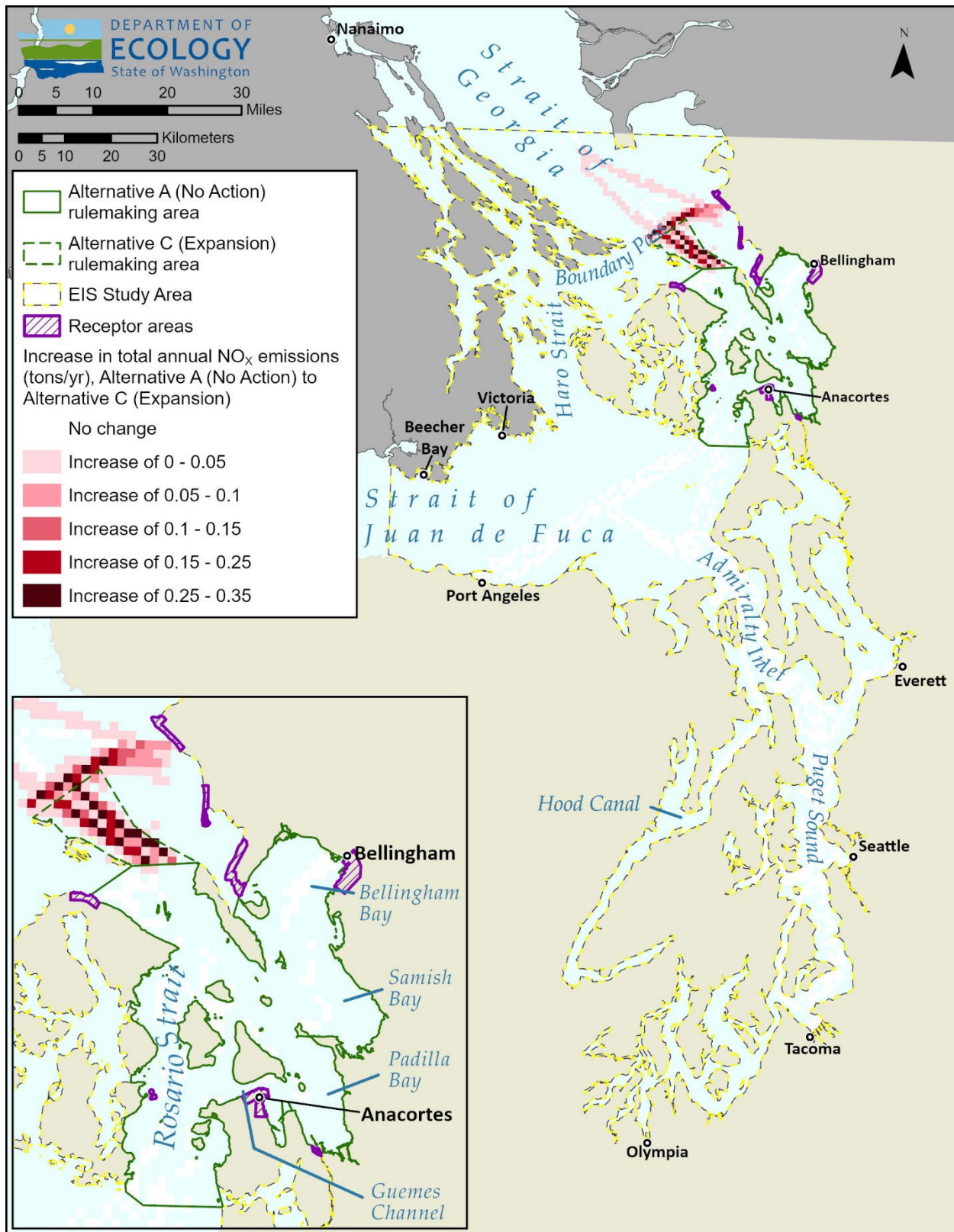


Figure 7. Increase in annual escort tug NO_x emissions between Alternative A and Alternative C.

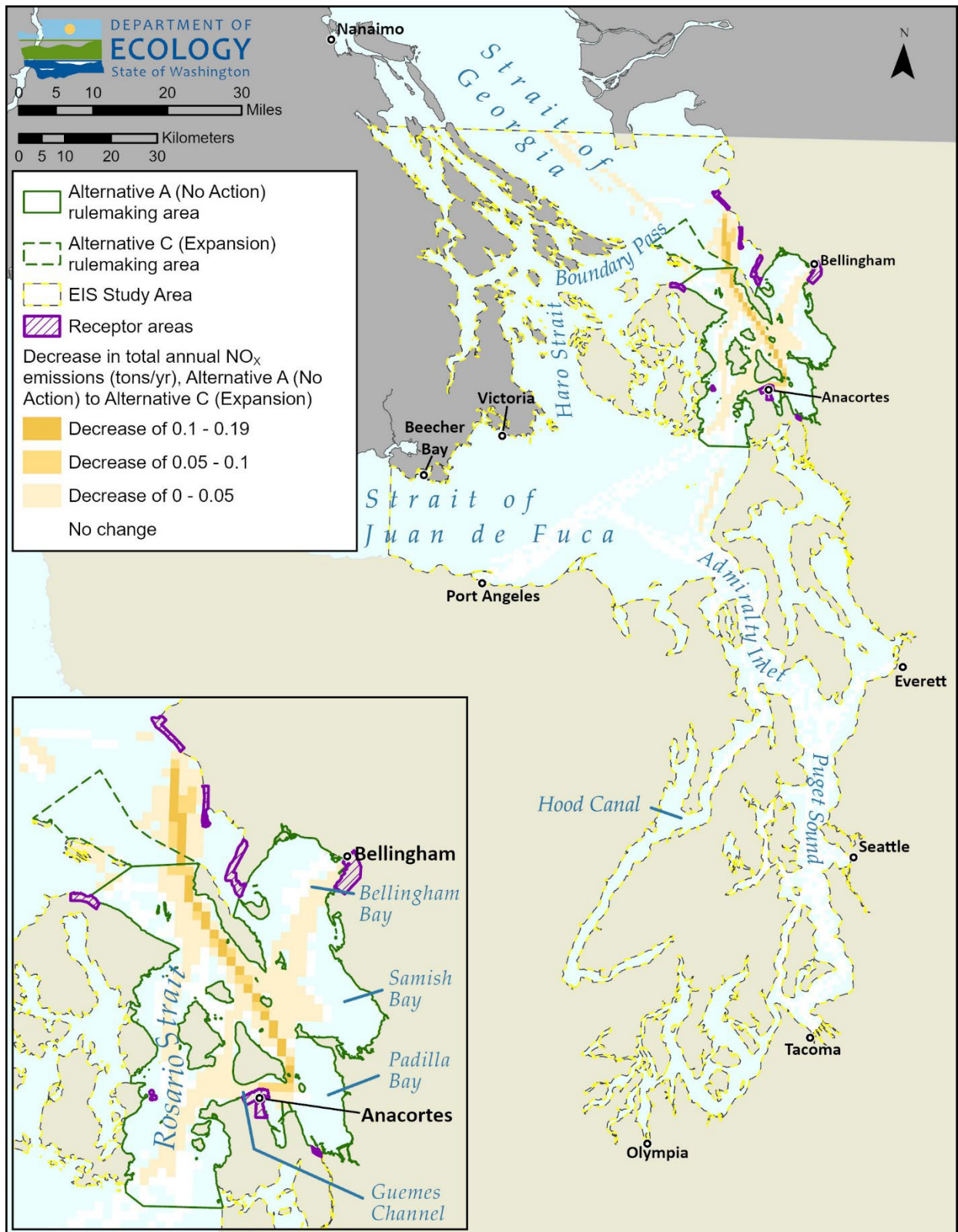


Figure 8. Decrease in annual escort tug NO_x emissions between Alternative A and Alternative C.

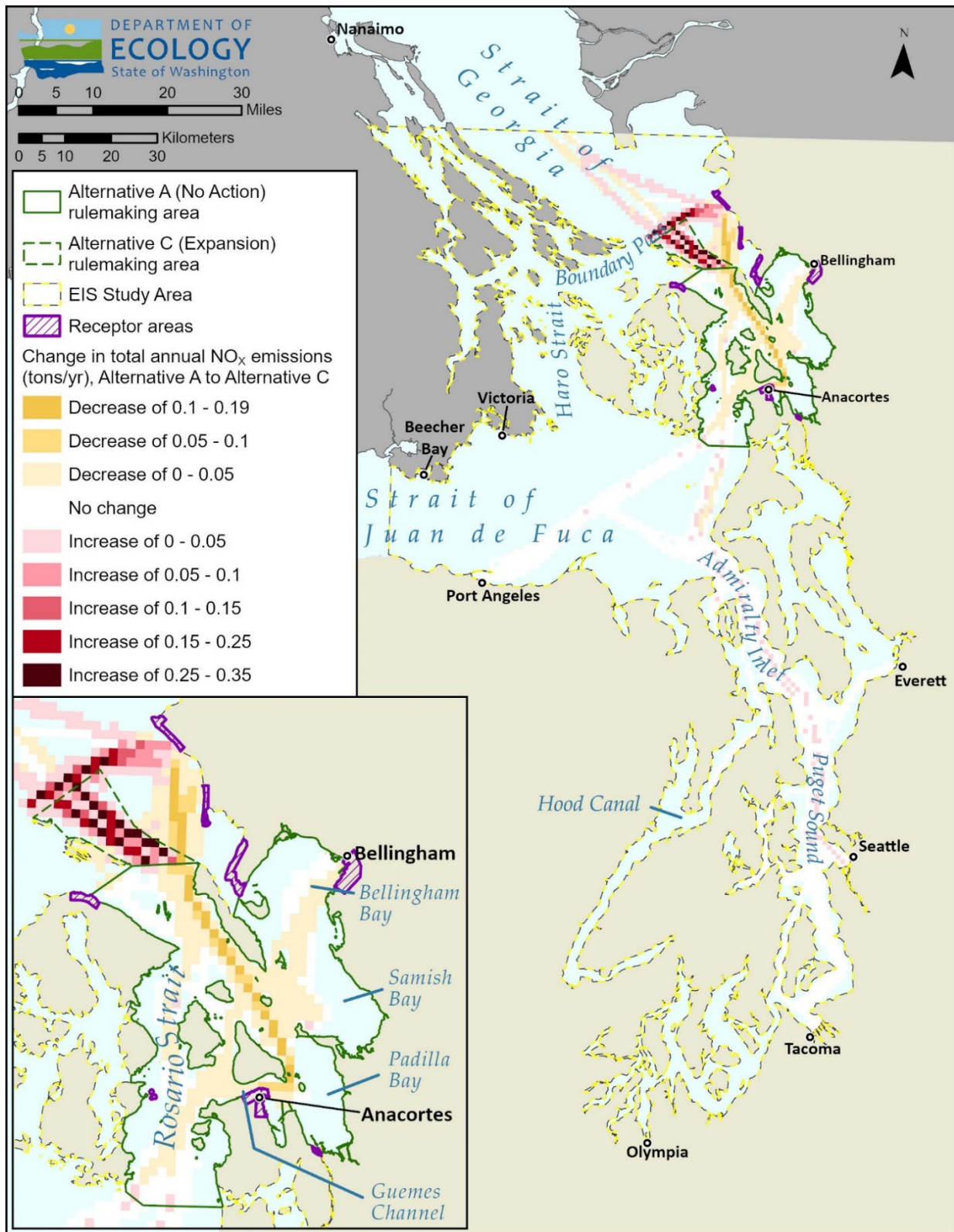


Figure 9. Change in annual escort tug NO_x emissions between Alternative A and Alternative C. This map appears in the Air Quality and Greenhouse Gas Emissions Section.