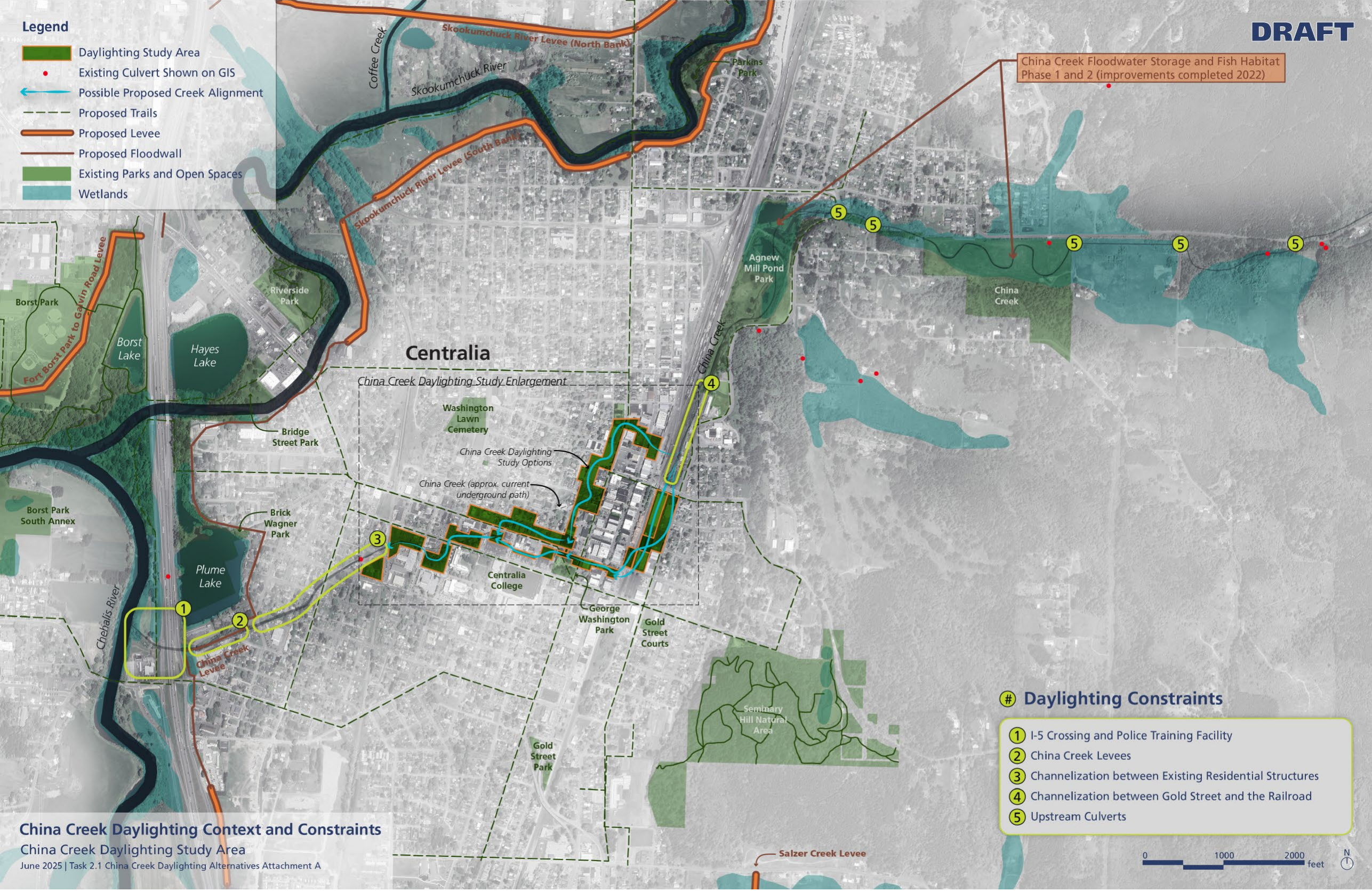


**Legend**

- Daylighting Study Area
- Existing Culvert Shown on GIS
- Possible Proposed Creek Alignment
- Proposed Trails
- Proposed Levee
- Proposed Floodwall
- Existing Parks and Open Spaces
- Wetlands



### Centralia

China Creek Daylighting Study Enlargement

**# Daylighting Constraints**

- 1 I-5 Crossing and Police Training Facility
- 2 China Creek Levees
- 3 Channelization between Existing Residential Structures
- 4 Channelization between Gold Street and the Railroad
- 5 Upstream Culverts

### China Creek Daylighting Context and Constraints

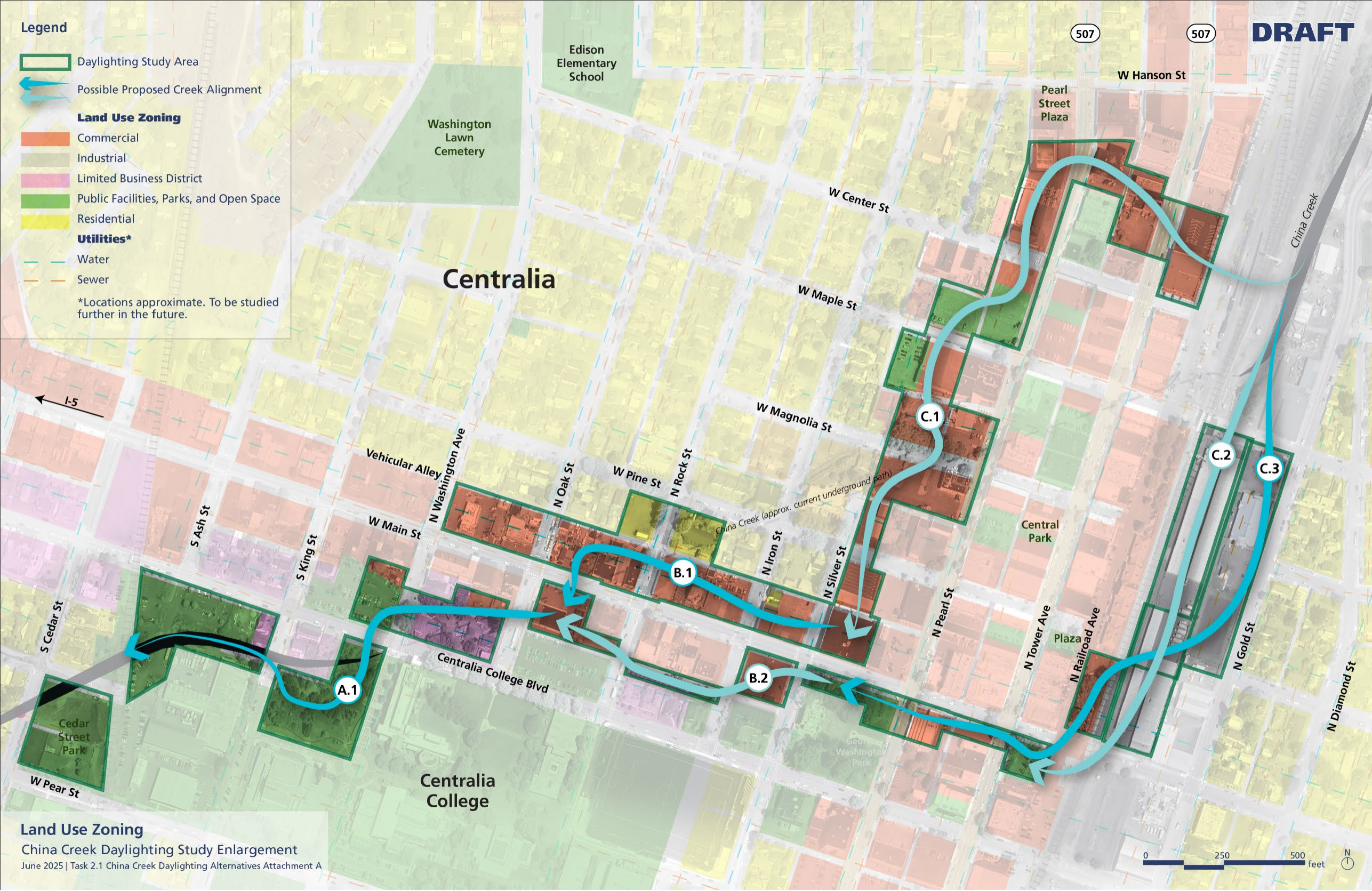
China Creek Daylighting Study Area  
June 2025 | Task 2.1 China Creek Daylighting Alternatives Attachment A





Legend

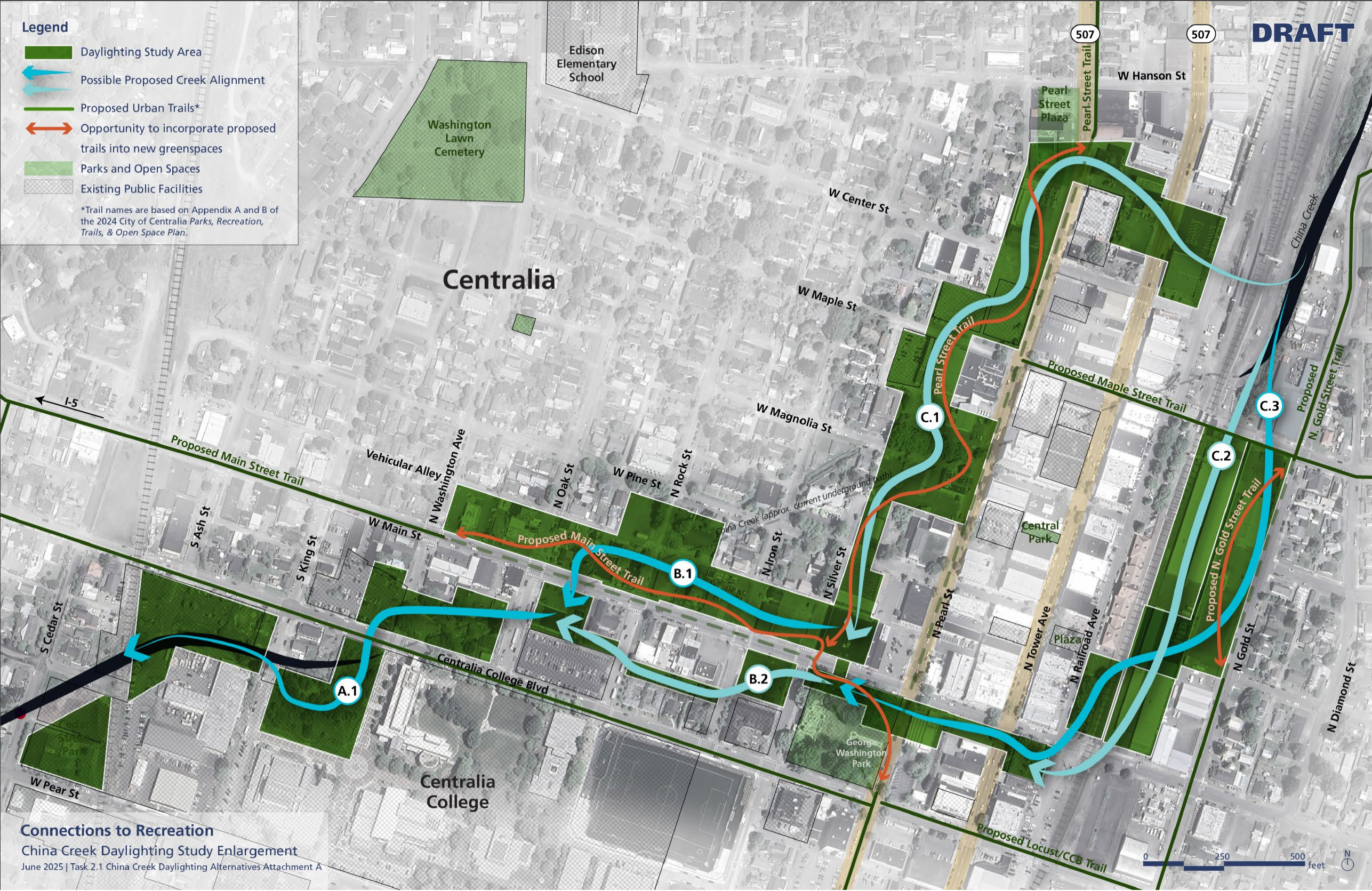
- Daylighting Study Area
  - Possible Proposed Creek Alignment
  - Land Use Zoning**
    - Commercial
    - Industrial
    - Limited Business District
    - Public Facilities, Parks, and Open Space
    - Residential
  - Utilities\***
    - Water
    - Sewer
- \*Locations approximate. To be studied further in the future.



**Legend**

- Daylighting Study Area
- Possible Proposed Creek Alignment
- Proposed Urban Trails\*
- Opportunity to incorporate proposed trails into new greenspaces
- Parks and Open Spaces
- Existing Public Facilities

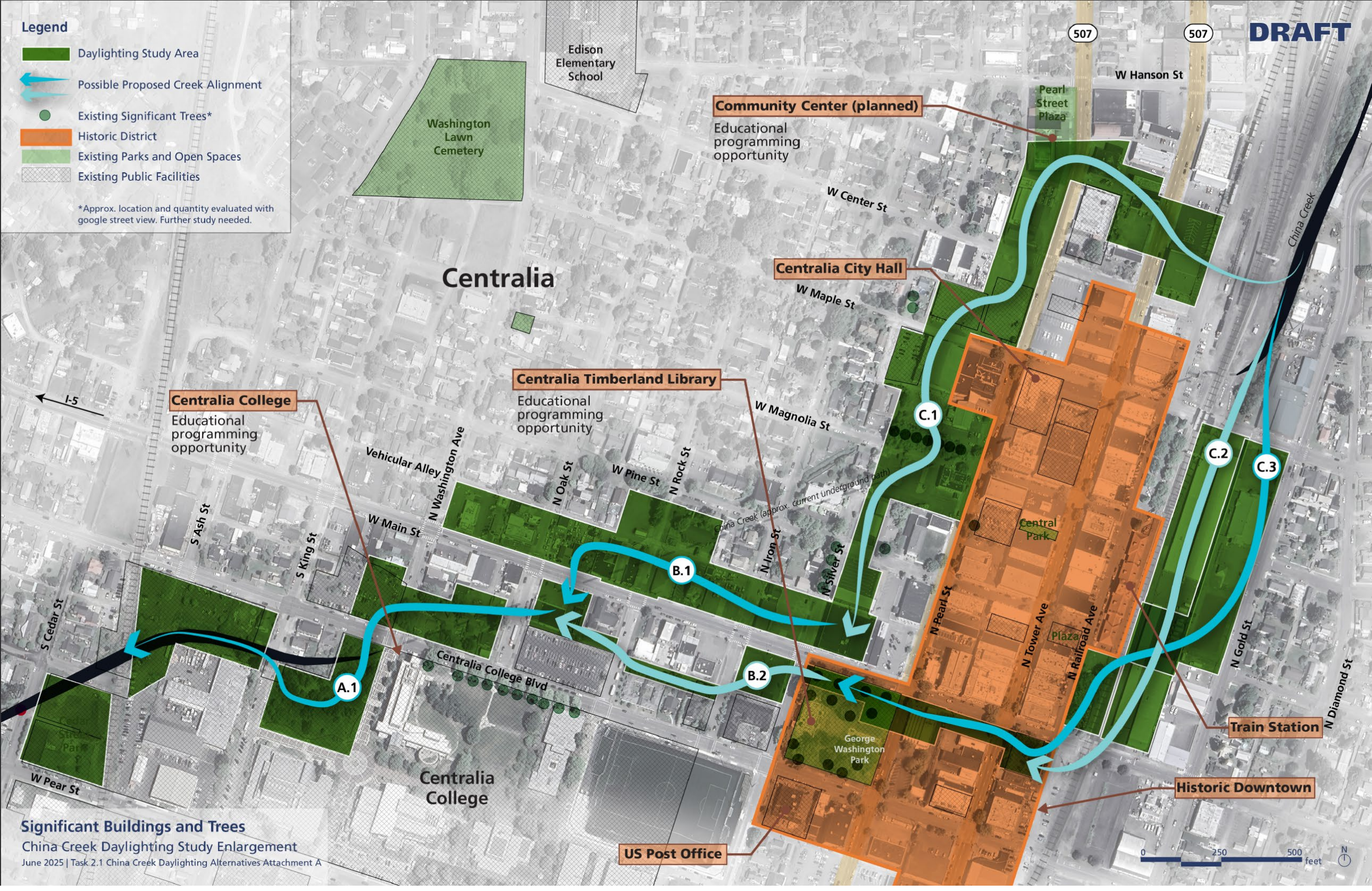
\*Trail names are based on Appendix A and B of the 2024 City of Centralia Parks, Recreation, Trails, & Open Space Plan.



Legend

- Daylighting Study Area
- Possible Proposed Creek Alignment
- Existing Significant Trees\*
- Historic District
- Existing Parks and Open Spaces
- Existing Public Facilities

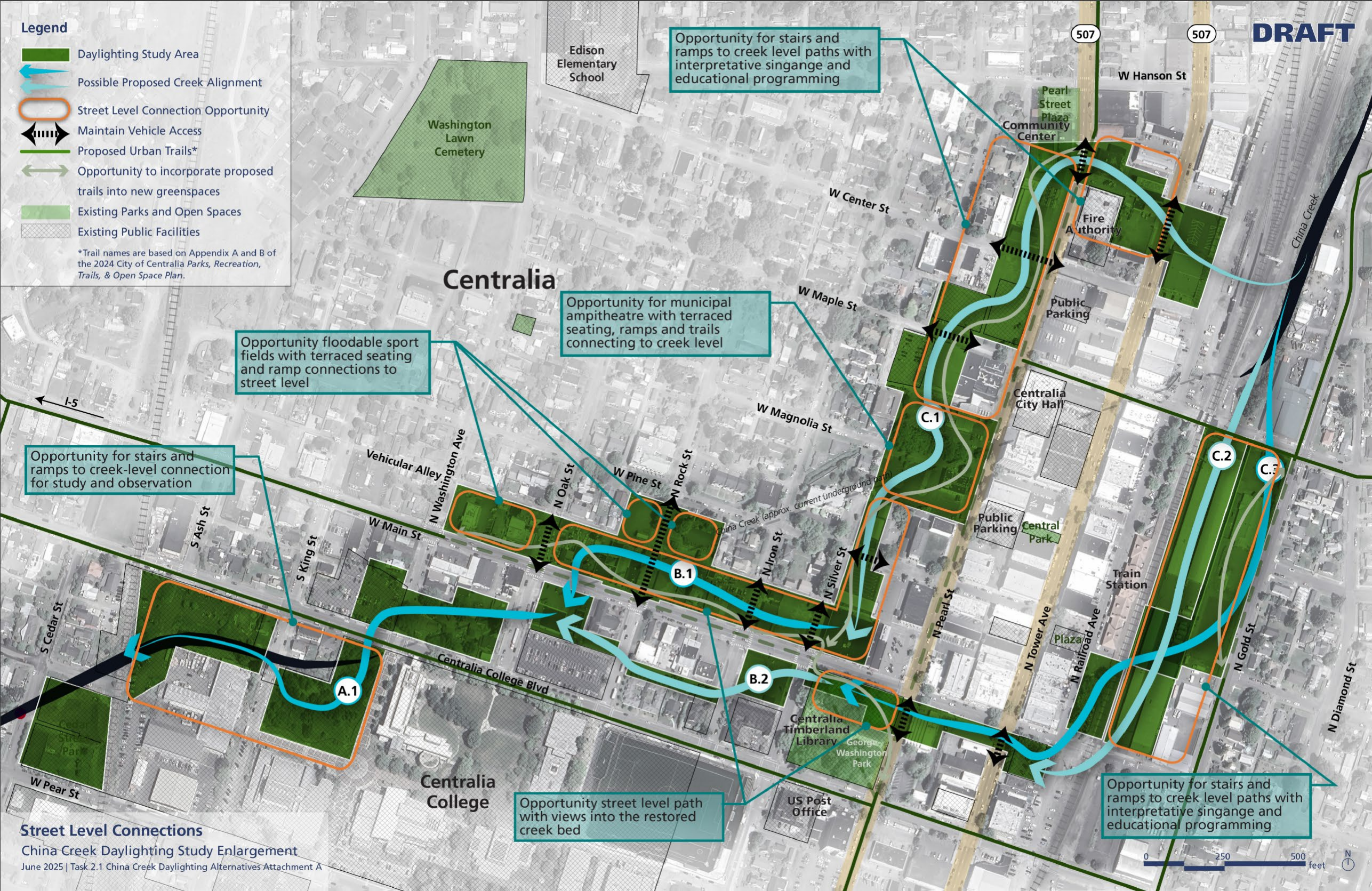
\*Approx. location and quantity evaluated with google street view. Further study needed.



**Legend**

- Daylighting Study Area
- Possible Proposed Creek Alignment
- Street Level Connection Opportunity
- Maintain Vehicle Access
- Proposed Urban Trails\*
- Opportunity to incorporate proposed trails into new greenspaces
- Existing Parks and Open Spaces
- Existing Public Facilities

\*Trail names are based on Appendix A and B of the 2024 City of Centralia Parks, Recreation, Trails, & Open Space Plan.



Opportunity for stairs and ramps to creek-level connection for study and observation

Opportunity floodable sport fields with terraced seating and ramp connections to street level

Opportunity for municipal amphitheatre with terraced seating, ramps and trails connecting to creek level

Opportunity for stairs and ramps to creek level paths with interpretative signage and educational programming

Opportunity street level path with views into the restored creek bed

Opportunity for stairs and ramps to creek level paths with interpretative signage and educational programming