

EXPLANATION

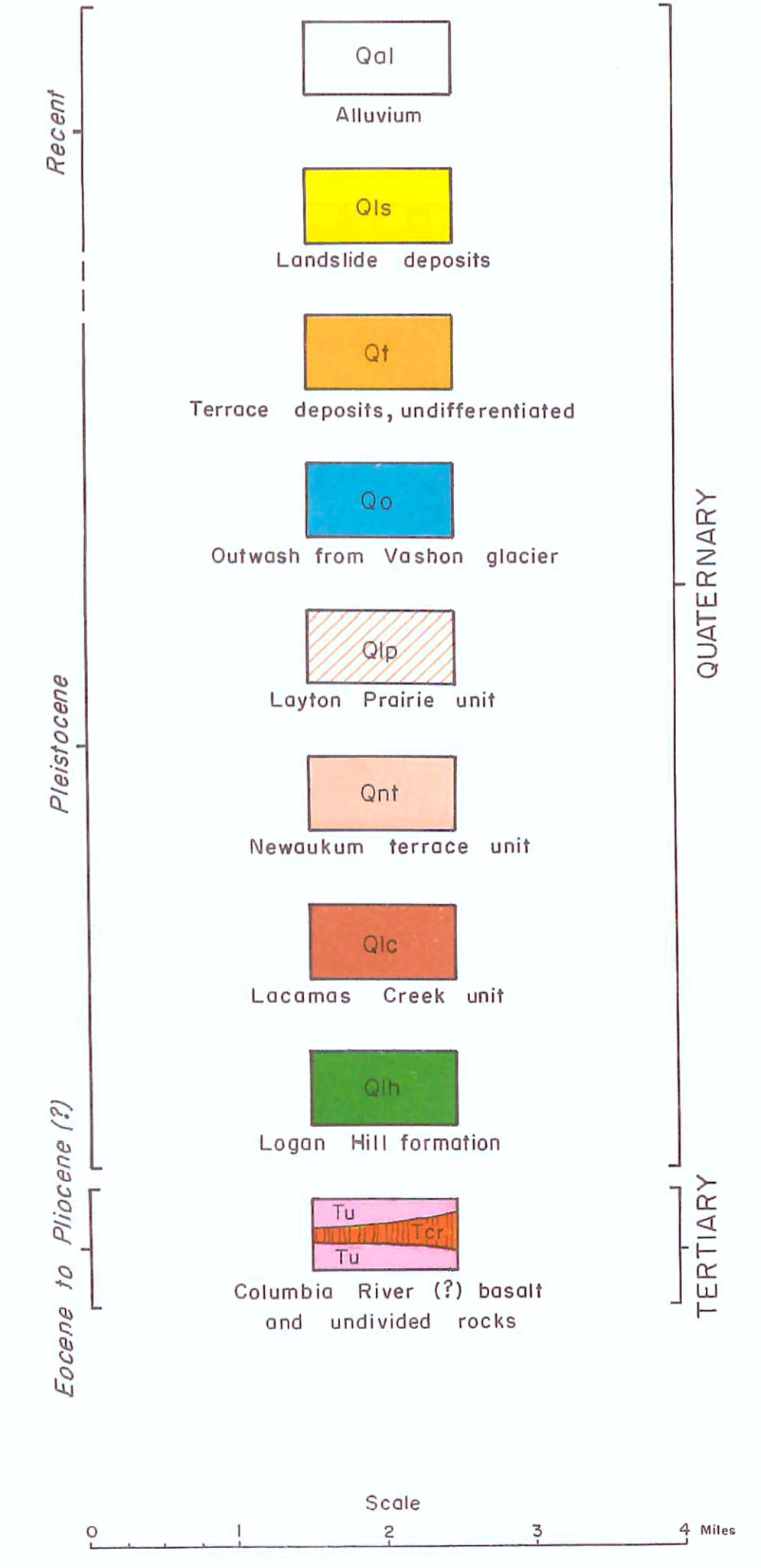
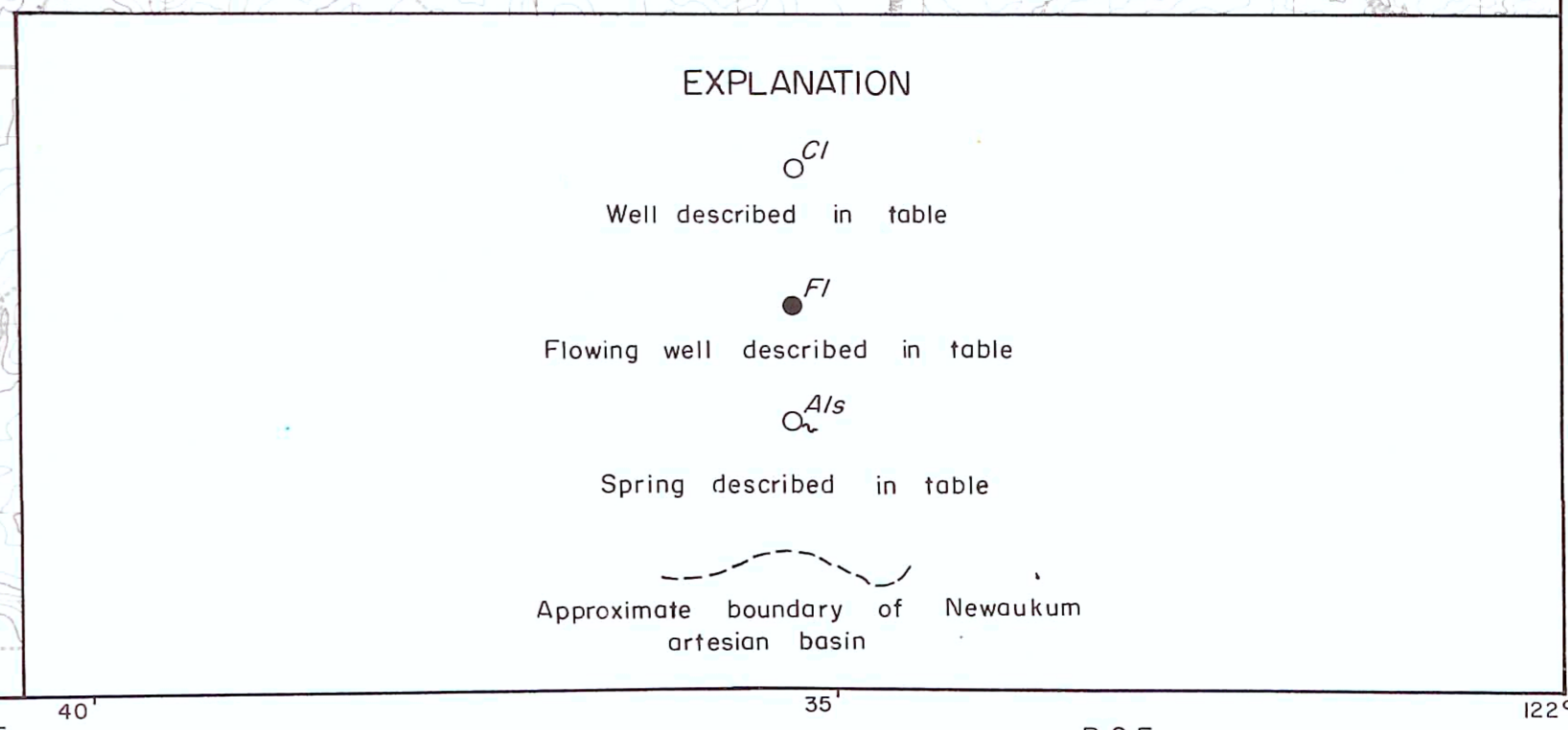
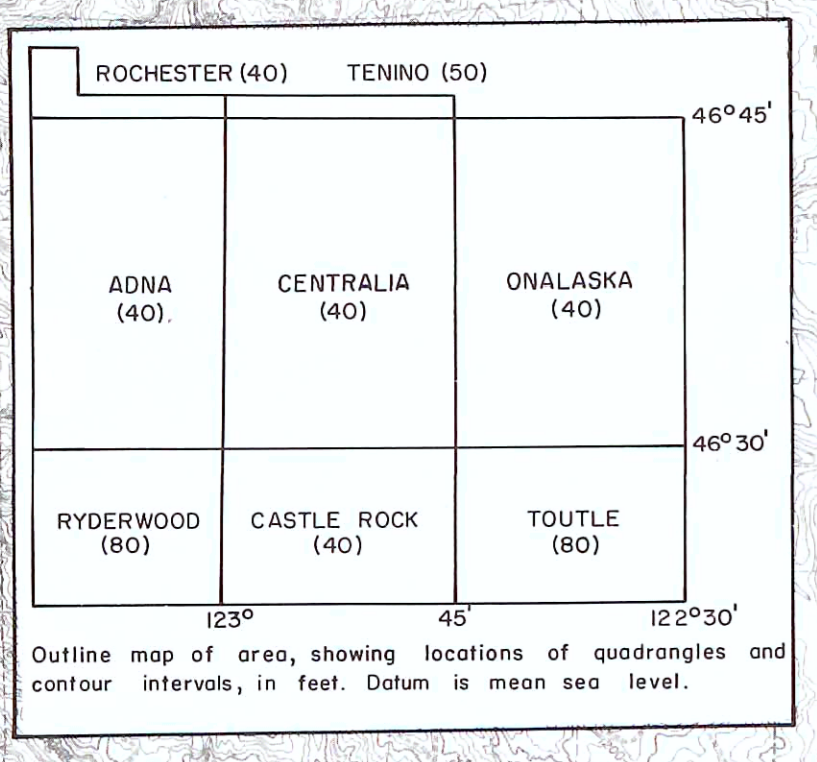
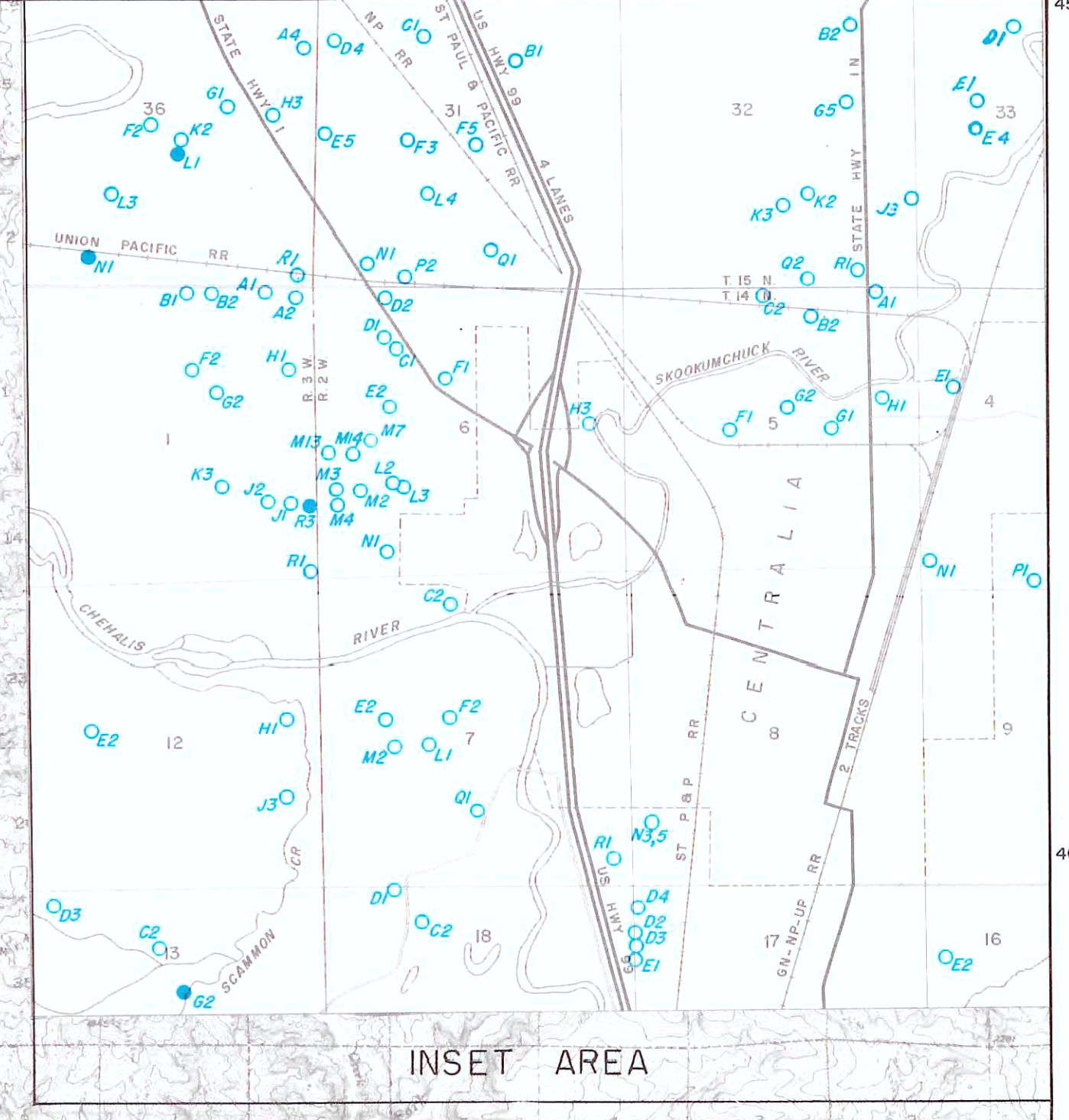
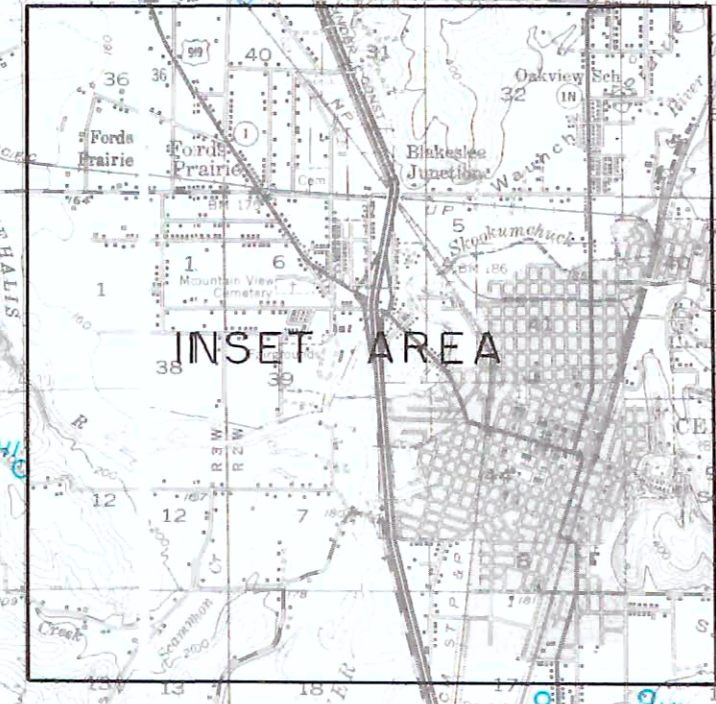
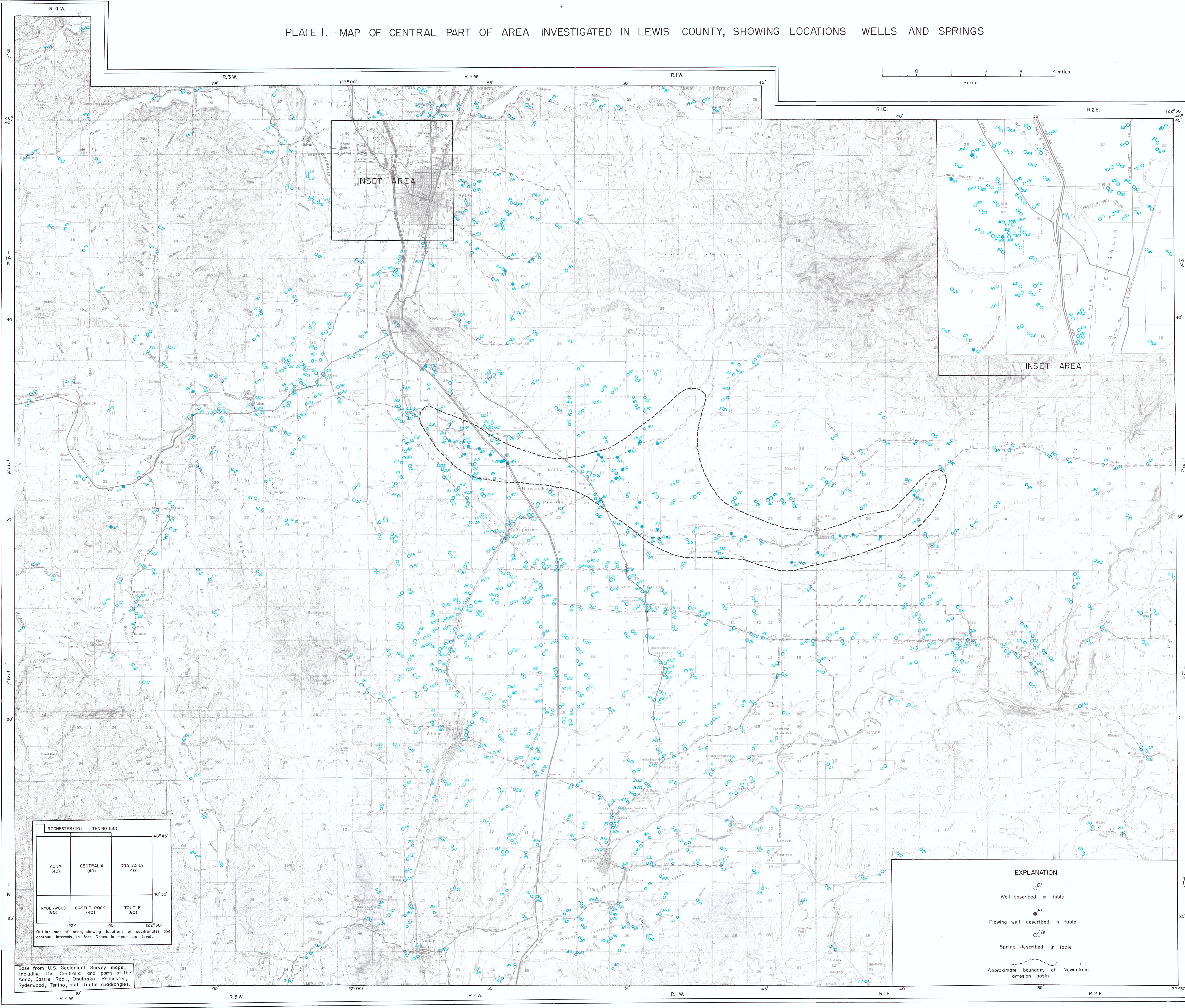
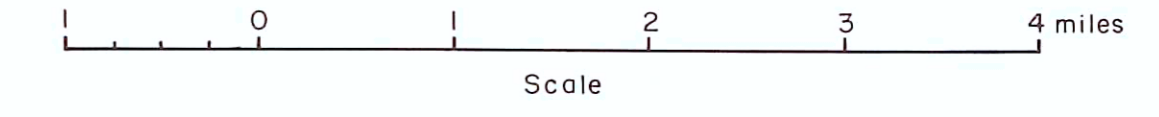


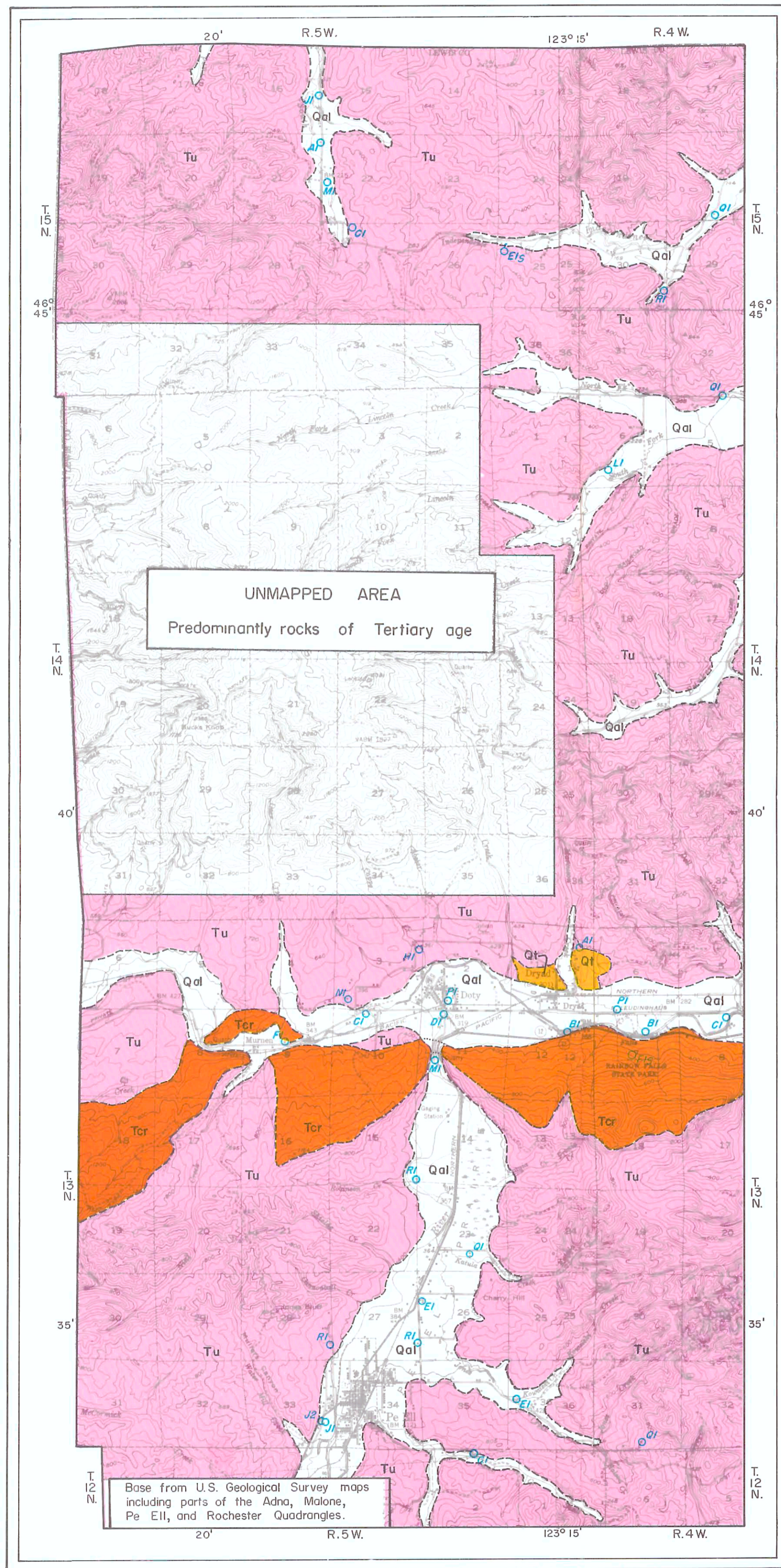
PLATE 4.--GEOLOGIC CROSS SECTIONS,
CENTRAL LEWIS COUNTY, WASH.

Geology by J.M. Weigle 1952-57
Field checking and minor revisions
by B.L. Foxworthy, 1958-59.

PLATE I.--MAP OF CENTRAL PART OF AREA INVESTIGATED IN LEWIS COUNTY, SHOWING LOCATIONS WELLS AND SPRINGS



Base from U.S. Geological Survey maps, including the Centralia and parts of the Adna, Castle Rock, Onalaska, Rochester, Ryderwood, Tenino, and Toutle quadrangles.



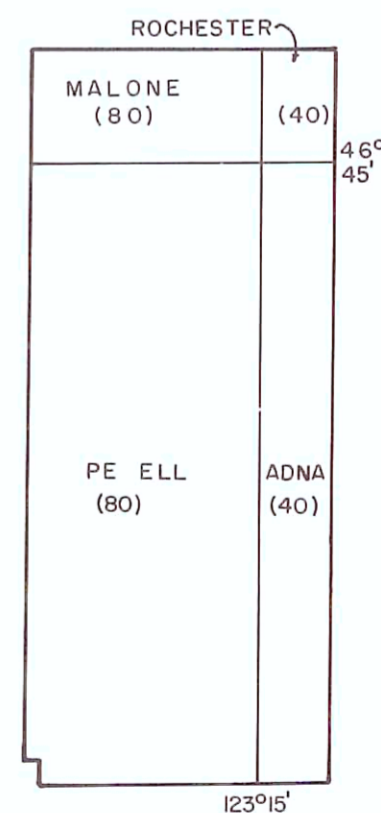
EXPLANATION

Recent	<div style="border: 1px solid black; width: 40px; height: 20px; margin: 0 auto;"></div> <p>Qal</p> <p>Alluvium</p>	QUATERNARY
Pleistocene	<div style="background-color: orange; width: 40px; height: 20px; margin: 0 auto;"></div> <p>Qt</p> <p>Terrace deposits</p>	
Eocene to Pliocene (?)	<div style="display: flex; align-items: center; justify-content: center;"> <div style="background-color: #f08080; width: 20px; height: 10px; margin-right: 2px;"></div> <div style="background-color: #ff4500; width: 20px; height: 10px; margin-right: 2px;"></div> <div style="background-color: #f08080; width: 20px; height: 10px; margin-left: 2px;"></div> </div> <p>Tu</p> <p>Tcr</p> <p>Tu</p> <p>Sedimentary and igneous rocks</p>	TERTIARY
	<p>Tu, mostly shale, siltstone, sandstone, mafic lava, pyroclastic rocks, and conglomerate, undifferentiated; more than 10,000 feet thick.</p> <p>Tcr, Columbia River(?) basalt, fine-grained dark basalt of middle(?) Miocene age; occurs usually as a single flow, locally more than 125 feet thick, interbedded with sedimentary materials of Miocene and Pliocene(?) age.</p> <p>Yield generally small, locally moderate supplies of ground water, often of poor chemical quality.</p>	

Dashed where indefinite or inferred, dotted where concealed.

Well described in table 1

Spring described in table 2



Outline map of area showing locations of quadrangles, and contour intervals, in feet. Datum is mean sea level.

Geology by J.M. Weigle 1952-57
 Field checking and minor revisions by B.L. Foxworthy, 1958-59.

PLATE 3.--MAP OF WESTERN PART OF AREA INVESTIGATED IN LEWIS COUNTY, SHOWING GENERALIZED GEOLOGY AND LOCATIONS OF WELLS AND SPRINGS.

