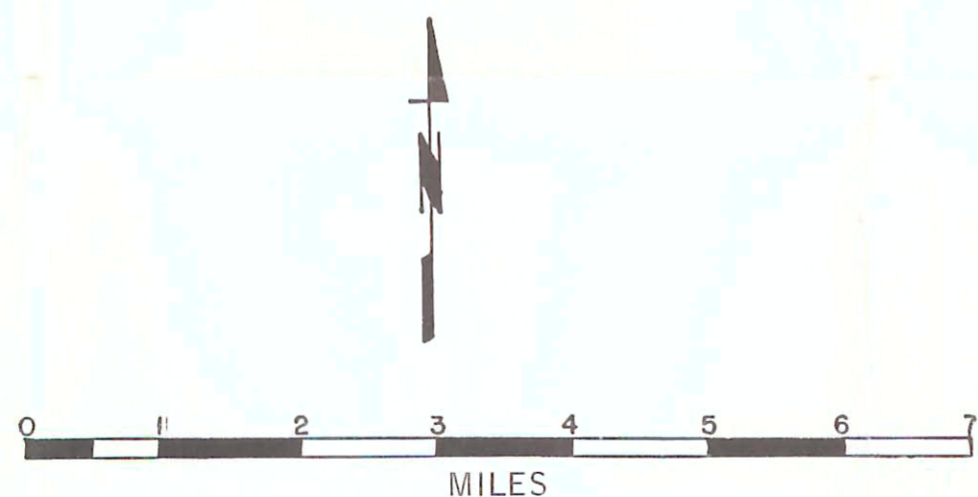
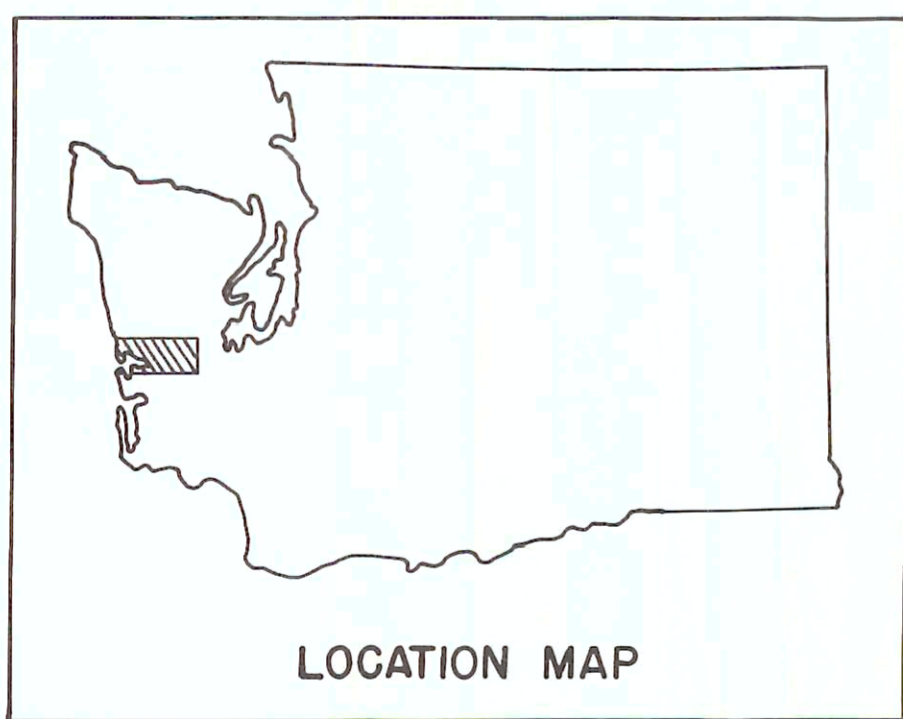
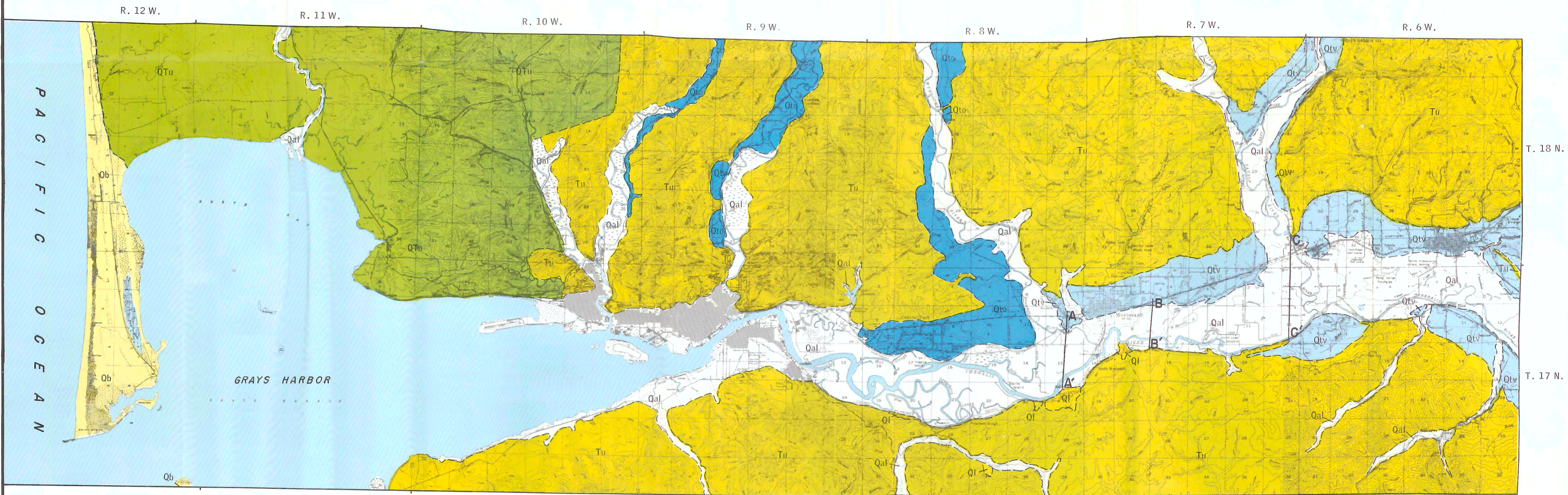
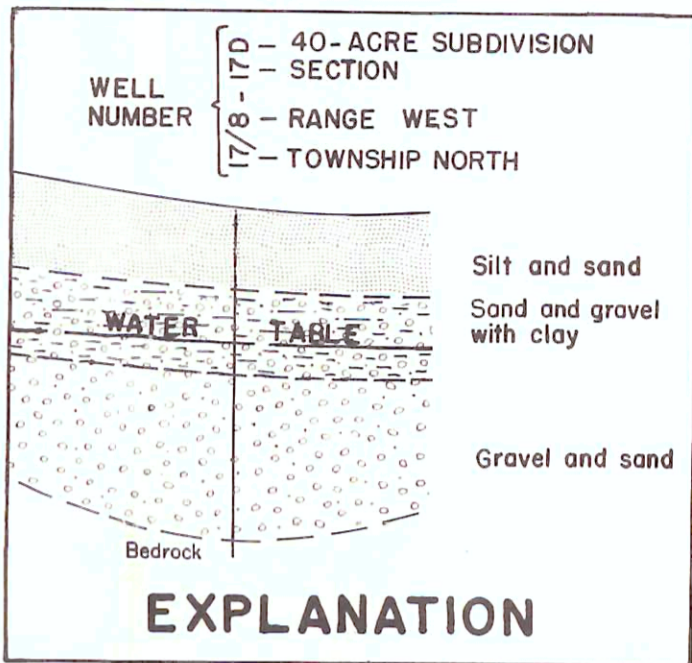


ENLARGED
DIAGRAMMATIC SECTIONS



Base Adapted From United States Geological Survey Topographic Quadrangles

EXPLANATION	
Qal	Alluvium: unconsolidated, interbedded river-laid silt, sand and gravel.
Qb	Beach deposits: wave and eolian deposited strand and dune sands.
Ql	Landslide: debris of Tertiary and Quaternary rocks.
Qlv	Terrace deposits of Vashon Drift: glaciofluvial outwash of coarse sand and gravel with some interbeds of clay.
Qlo	Terrace deposits of Olympic Mountain streams: glaciofluvial outwash of coarse sand and gravel.
QTu	Pliocene-Pleistocene deposits, undifferentiated: principally a deformed and deeply weathered stratified gravel and sand.
Tu	Tertiary rocks, undifferentiated: includes siltstones, sandstones, conglomerates and basalt flows.

GEOLOGIC MAP
OF THE
LOWER CHEHALIS
RIVER VALLEY
GRAYS HARBOR COUNTY

By Paul Eddy
STATE OF WASHINGTON
DEPARTMENT OF CONSERVATION
DIVISION OF WATER RESOURCES
1966

