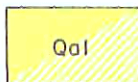
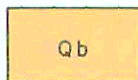


## EXPLANATION



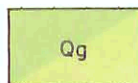
Alluvial deposits

Unconsolidated sand, gravel, silt, and clay. Generally at mouths of major streams, but locally include older alluvium not directly related to existing streams. In many places are the only known source of ground water at economic drilling depths. Yield moderate to large quantities of water where shown as solid color; yield small to moderate quantities where shown as pattern. Generally susceptible to sea-water intrusion



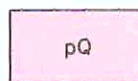
Beach and coastal terrace deposits

Littoral unconsolidated deposits of sand and gravel, reworked and sorted in places by wind and wave action. Yield small to moderate water supplies from shallow wells. Often the only known source of appreciable fresh water. Generally susceptible to sea-water intrusion



Glacial deposits and related unconsolidated materials

Till, outwash, and associated interglacial deposits; sorted and unsorted gravel, sand, silt, and clay. Principal source of ground water in most of Puget Sound area. Thickness ranges from a few feet to more than 1,000 feet. Yield moderate to large quantities of water from well-sorted sand and gravel zones where shown as darker shade; yield small to moderate quantities where shown as lighter shade. Commonly only moderately susceptible to sea-water intrusion



Bedrock

Consolidated or semiconsolidated igneous, metamorphic, and sedimentary rocks. Generally yield insignificant quantities of water. Subject to sea-water intrusion only where highly fractured



Unmapped

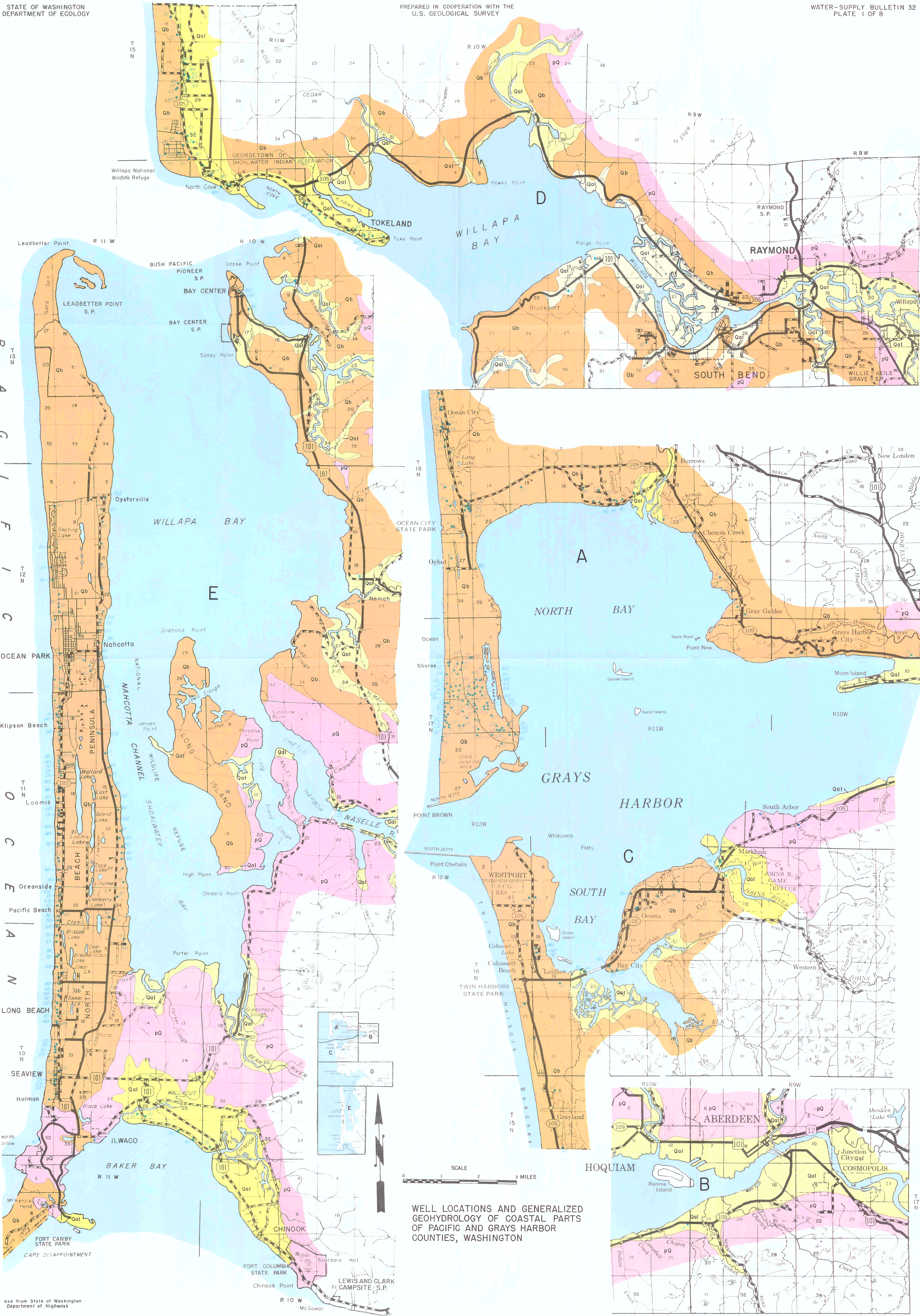
Geology and susceptibility to sea-water intrusion not included in this reconnaissance



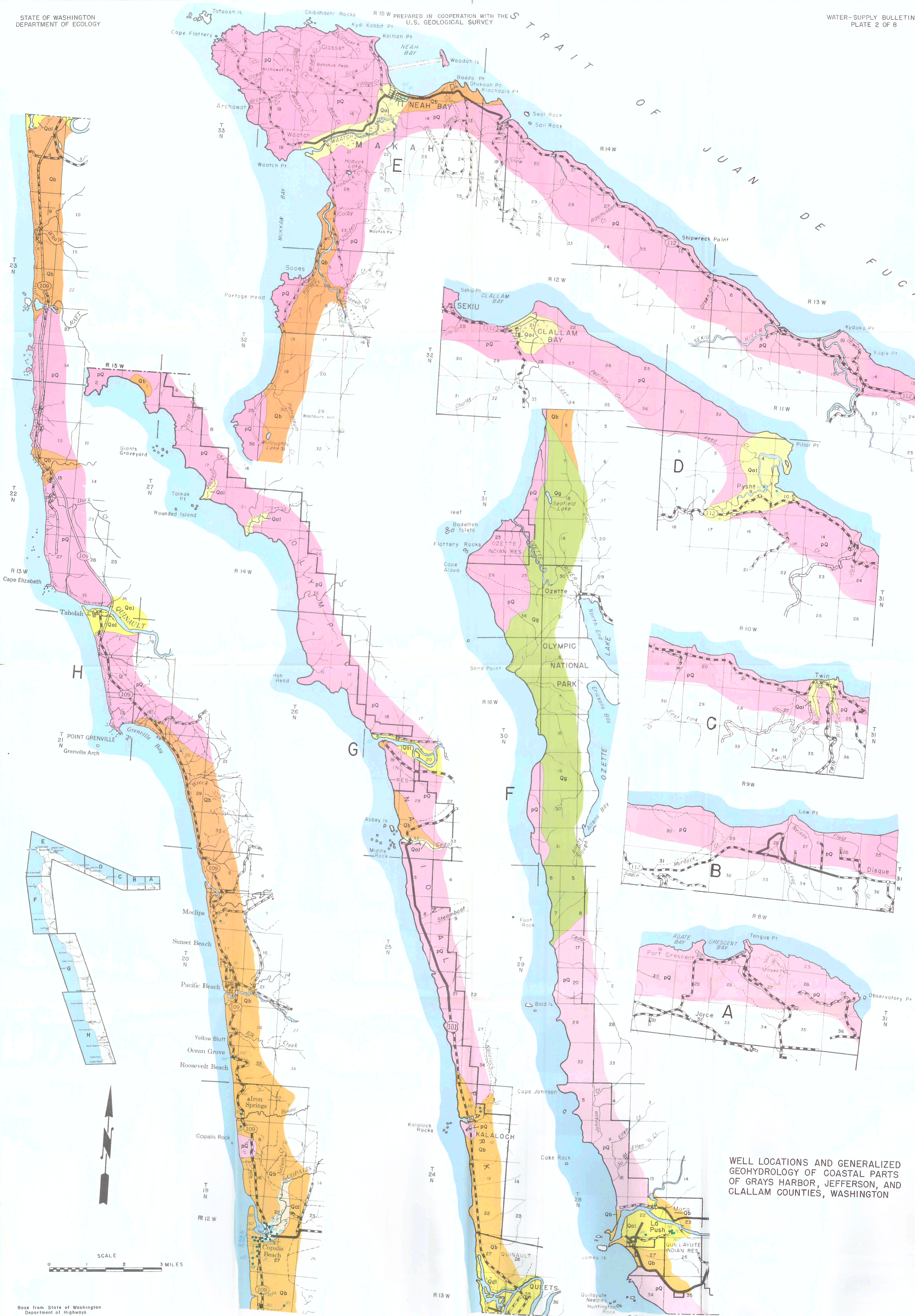
Contact



Underscored well numbers indicate that well is properly plotted within the section, but is improperly plotted in relation to roads

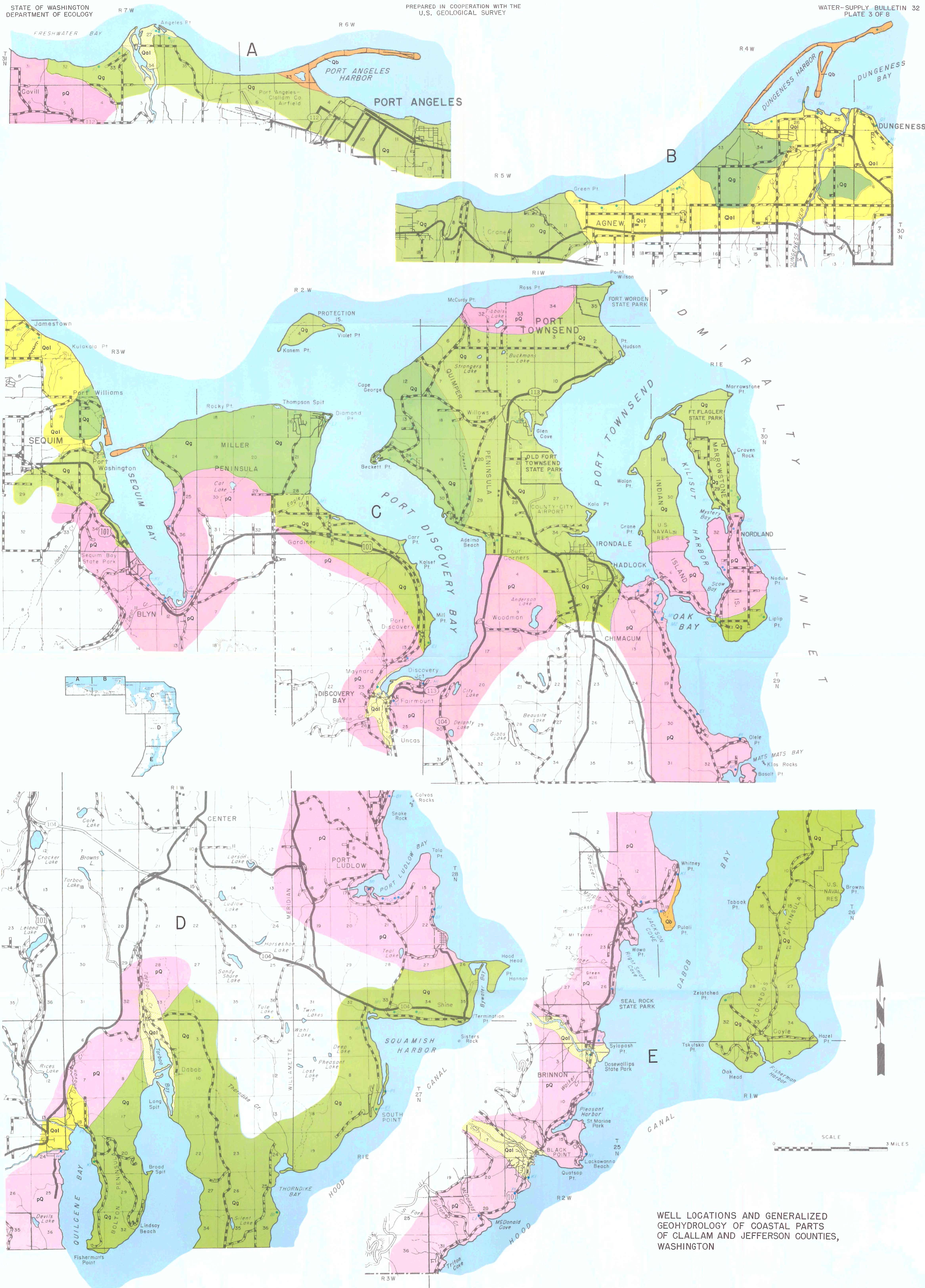


Base from State of Washington  
Department of Highways



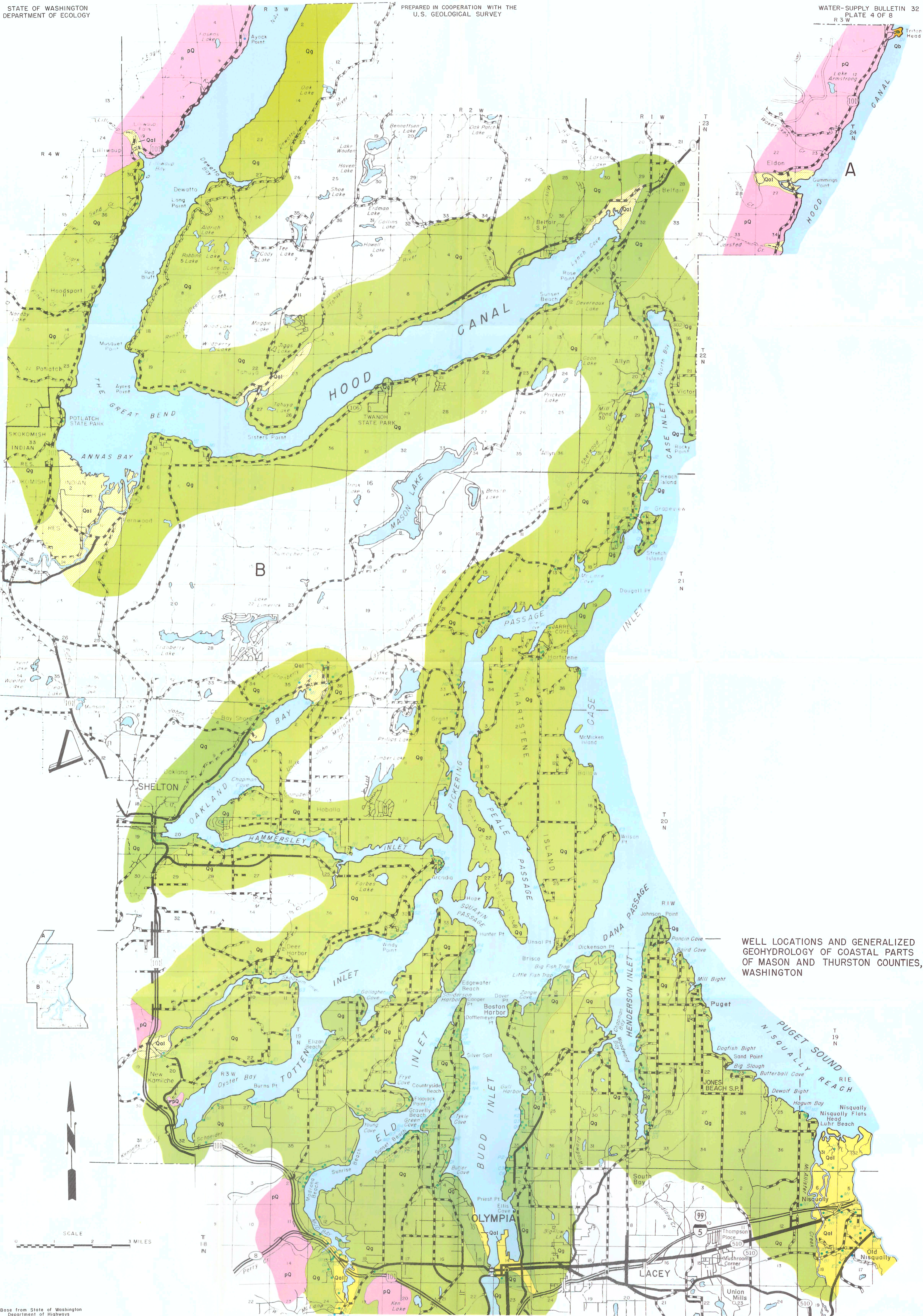
WELL LOCATIONS AND GENERALIZED GEOHYDROLOGY OF COASTAL PARTS OF GRAYS HARBOR, JEFFERSON, AND CLALLAM COUNTIES, WASHINGTON

Base from State of Washington Department of Highways



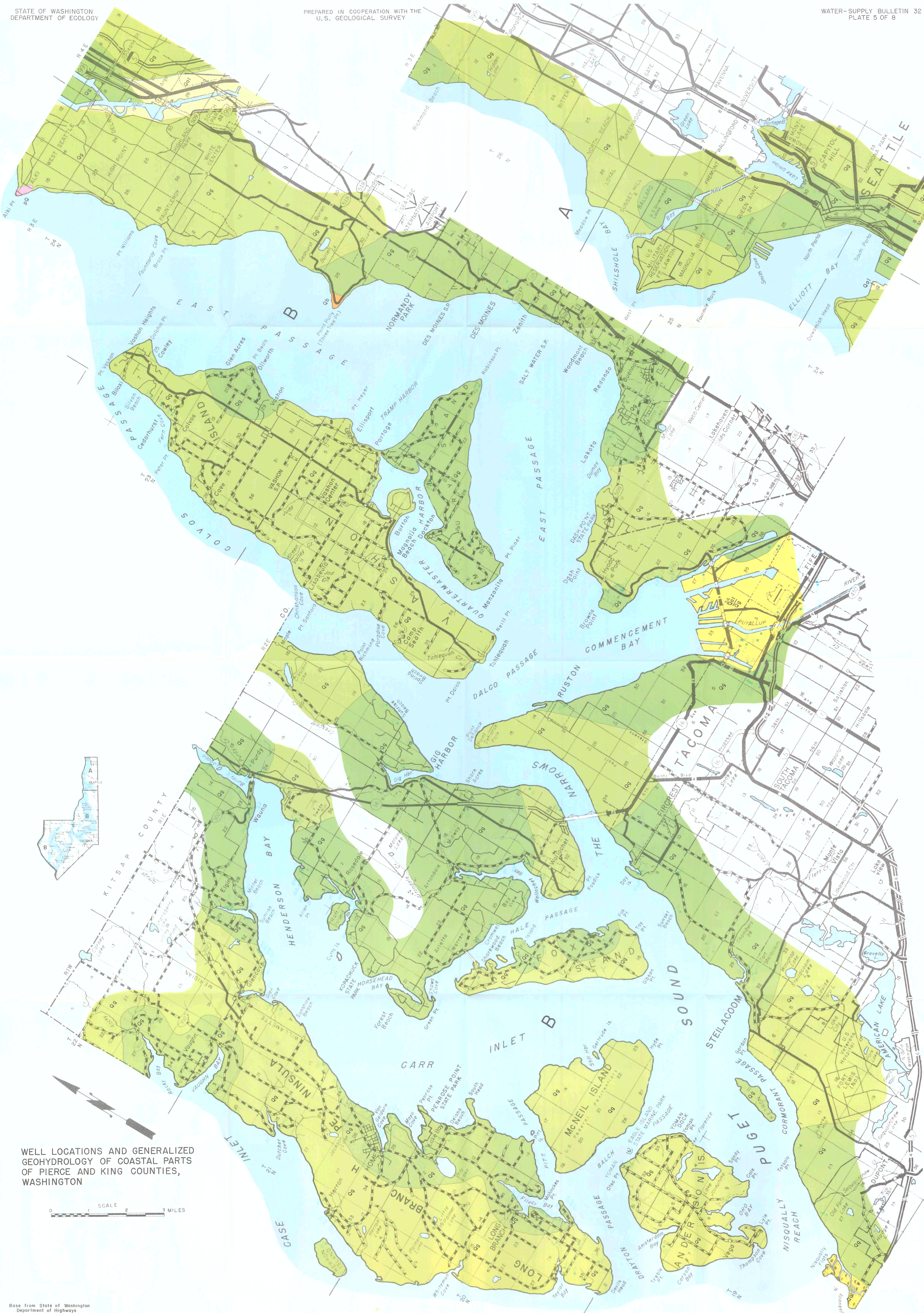
WELL LOCATIONS AND GENERALIZED  
GEOHYDROLOGY OF COASTAL PARTS  
OF CLALLAM AND JEFFERSON COUNTIES,  
WASHINGTON

Base from State of Washington  
Department of Highways



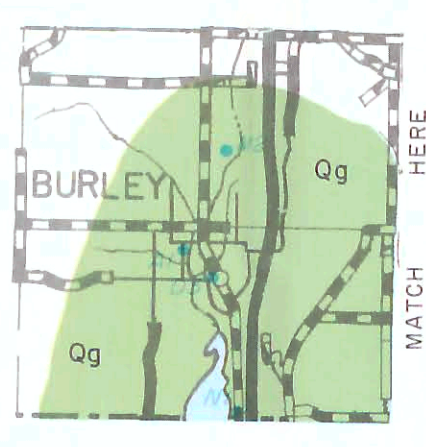
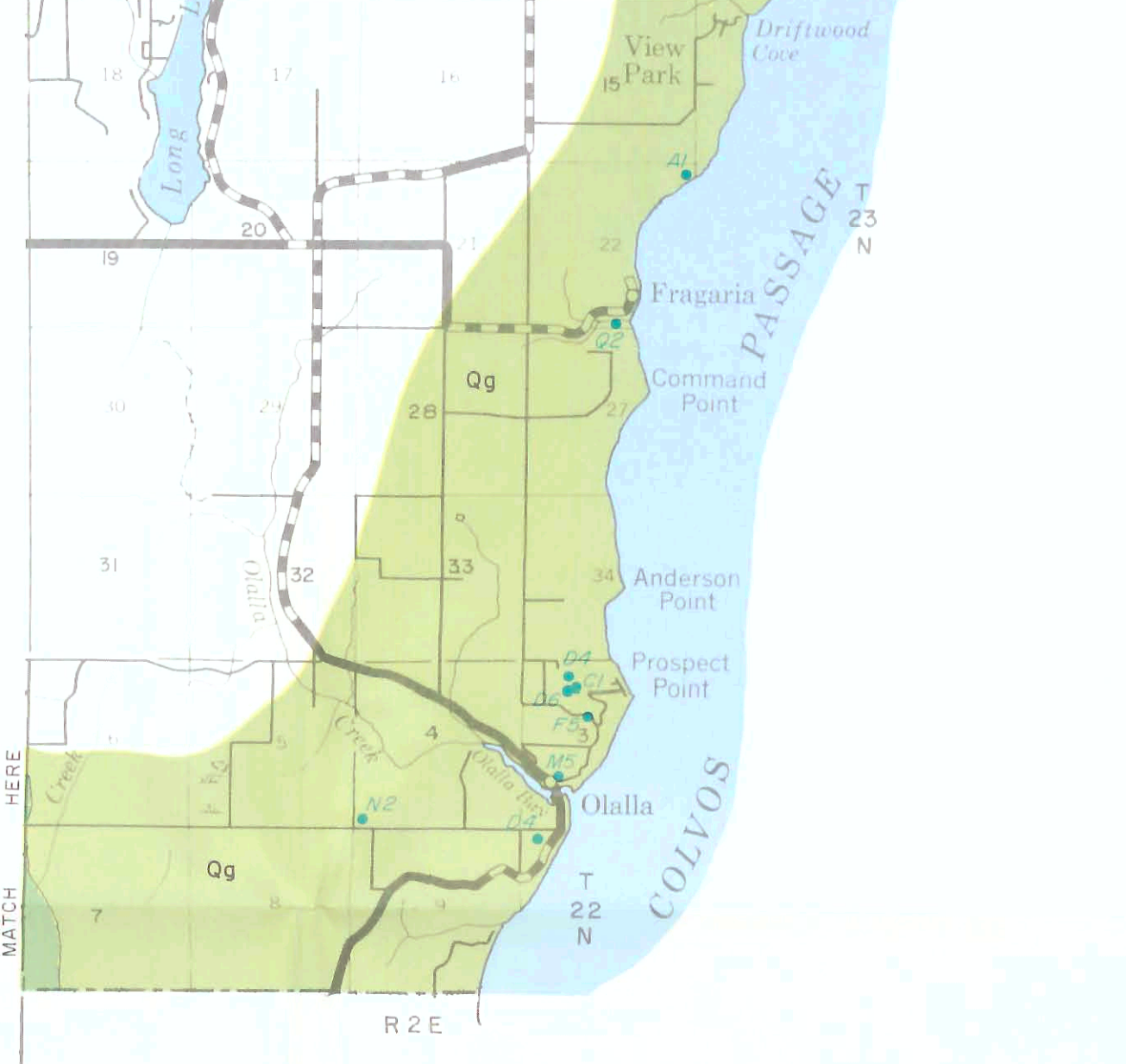
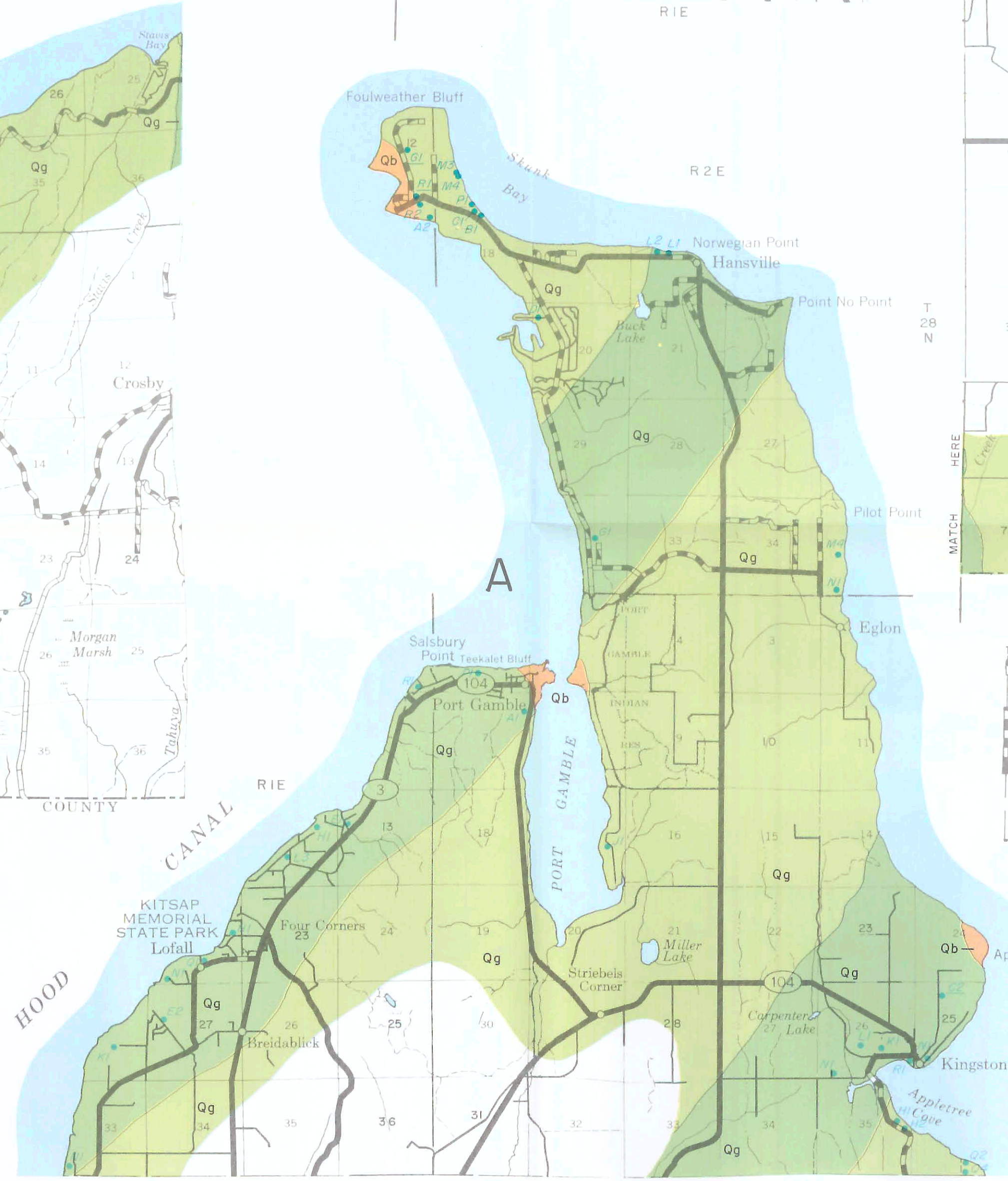
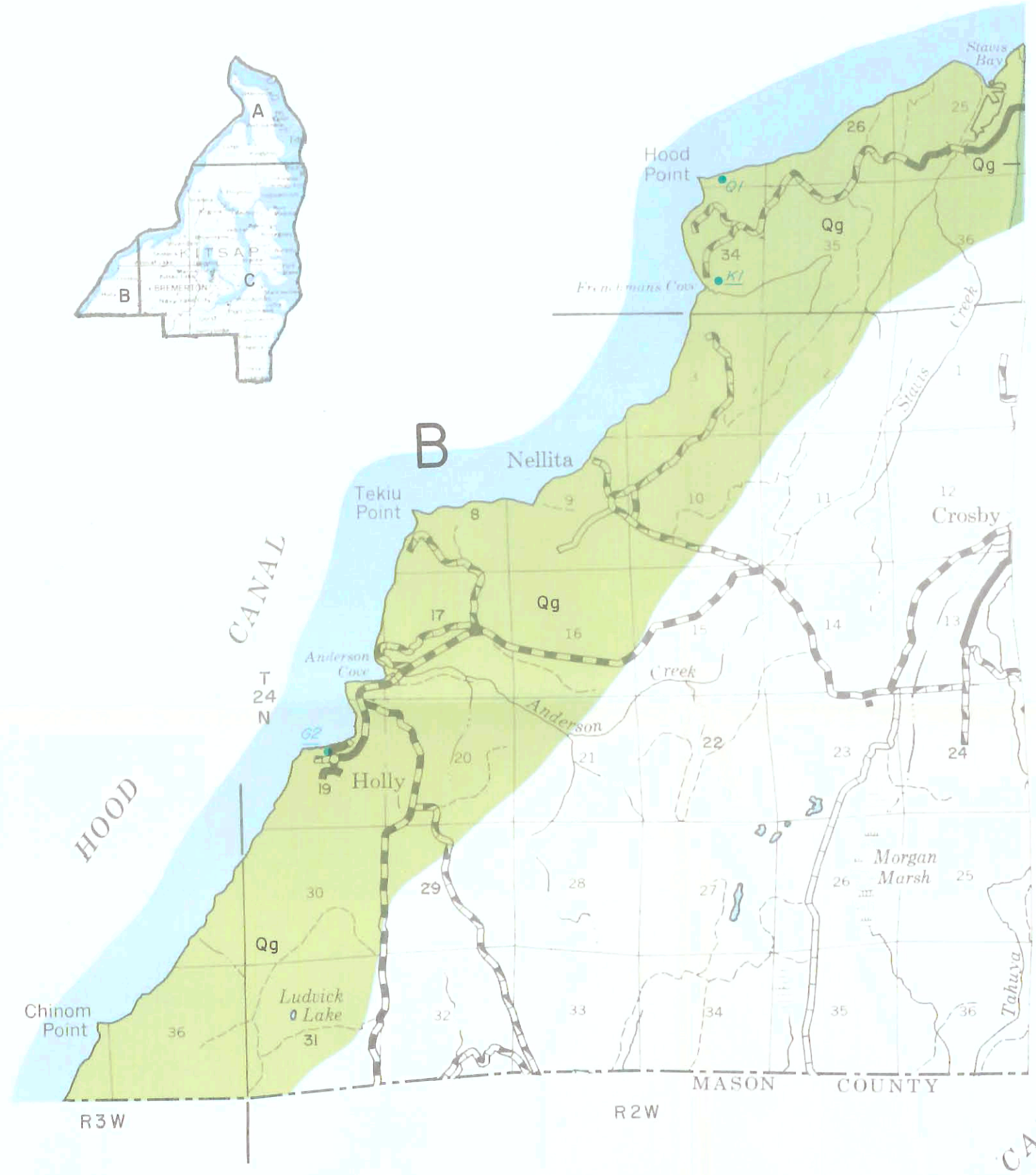
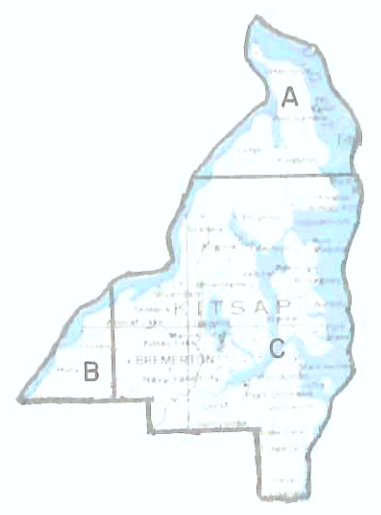
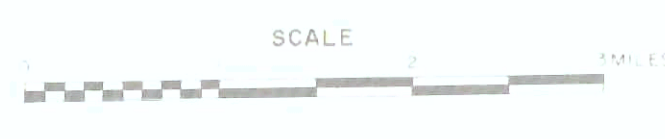
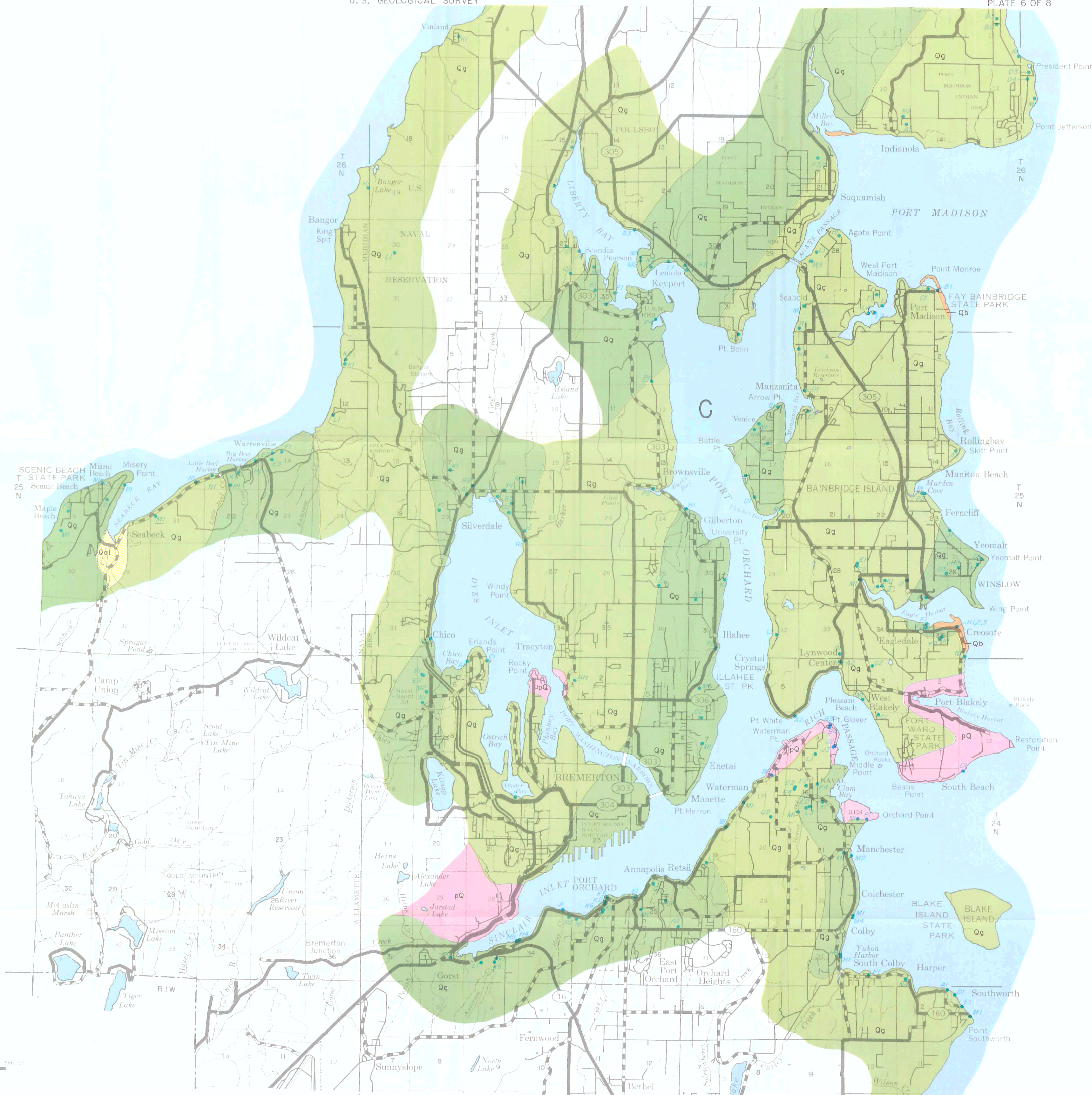
WELL LOCATIONS AND GENERALIZED  
GEOHYDROLOGY OF COASTAL PARTS  
OF MASON AND THURSTON COUNTIES,  
WASHINGTON

Base from State of Washington  
Department of Highways

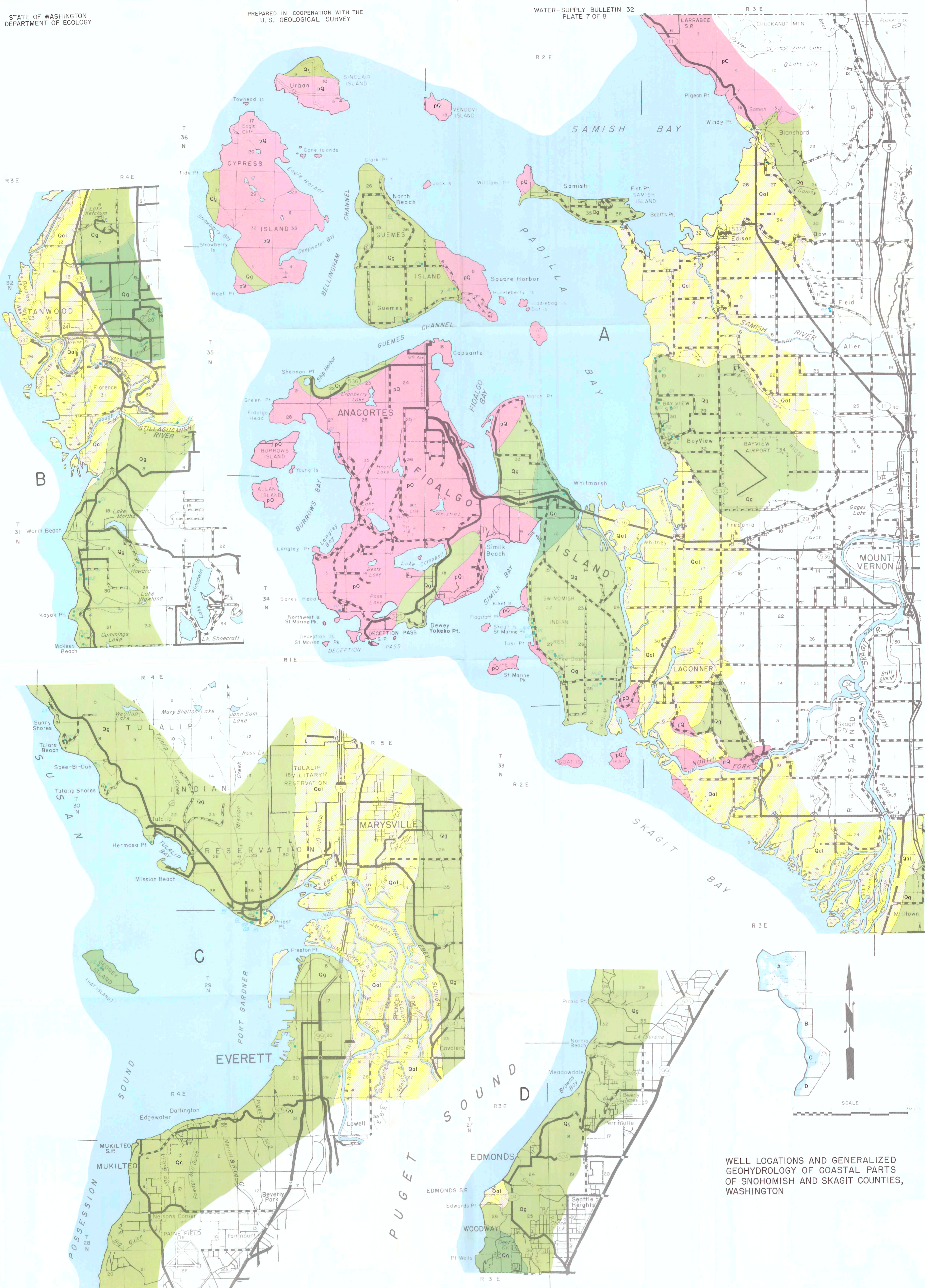


WELL LOCATIONS AND GENERALIZED  
GEOHYDROLOGY OF COASTAL PARTS  
OF PIERCE AND KING COUNTIES,  
WASHINGTON

Base from State of Washington  
Department of Highways



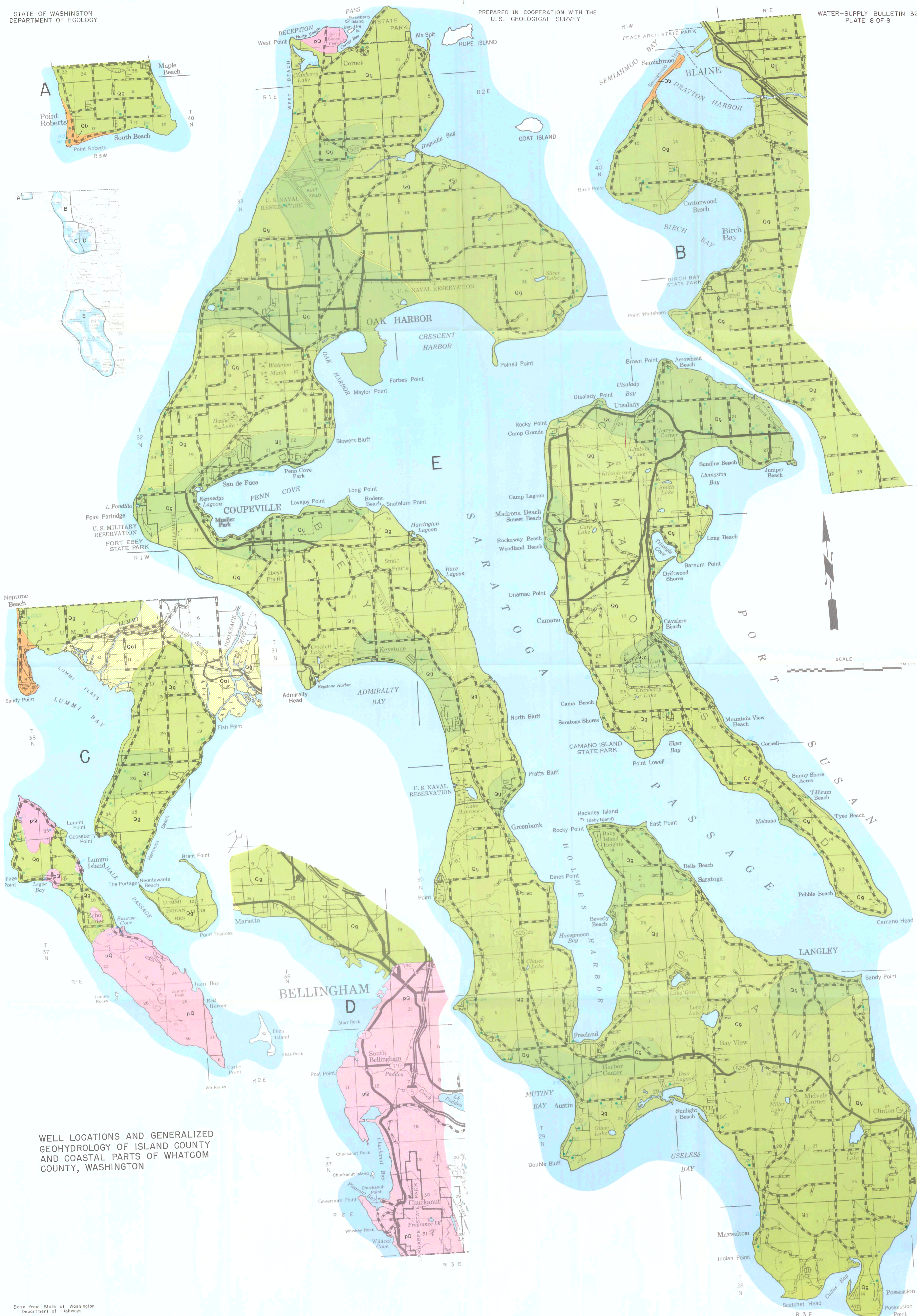
WELL LOCATIONS AND GENERALIZED  
GEOHYDROLOGY OF COASTAL PARTS  
OF KITSAP COUNTY, WASHINGTON



WELL LOCATIONS AND GENERALIZED  
GEOHYDROLOGY OF COASTAL PARTS  
OF SNOHOMISH AND SKAGIT COUNTIES,  
WASHINGTON

Base from State of Washington  
Department of Highways





WELL LOCATIONS AND GENERALIZED GEOHYDROLOGY OF ISLAND COUNTY AND COASTAL PARTS OF WHATCOM COUNTY, WASHINGTON

Base from State of Washington  
Department of Highways

Possession  
Possession  
Point